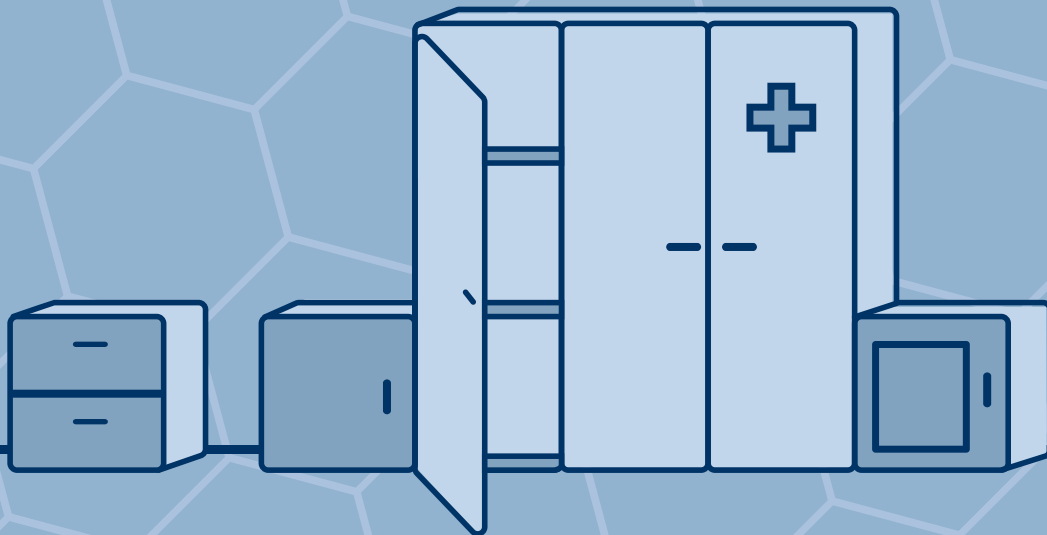


Design By Your Side

Medical Furniture Contest



Summary

New product design contest on Desall.com: Missaglia and Desall invite you to propose a new family of cabinets designed for medical environments, with an innovative design and contemporary style, equipped with state-of-the-art technologies aimed at enriching and facilitating the user experience.

Official contest page: <http://bit.ly/DesignByYourSide>

Company Description

The story of Missaglia, a company producing furniture and equipment for healthcare and case work, dates back to long ago. An entrepreneurial vocation that since 1926 has seen the commitment and passion of three generations.

Missaglia made the social and environmental sustainability and the design culture its own distinctive trait, the mark that characterises its presence on the market.

Social and environmental responsibility for Missaglia means the compliance with the international regulations regarding product safety; environmental respect in the choice of material and production processes; guarantee of continuity towards the clients; safeguard of the employees and professional resources that contribute to the success of the company with their commitment.

What we are looking for

Missaglia relies on the international community of designers for a new product that puts the individual at the centre, suggesting a **new series of cabinets** (wardrobes and various-sizes containers) with an **innovative design** and a great **care for detail**, able to fit well with the various areas inside hospitals, nursing homes and private clinics. In line with the brand values, the **cabinets** shall have a **special care for environmental issues** and present themselves as **highly innovative products**, able to embed state-of-the-art technologies, both electronic and not (i.e. **Internet-of-Things IoT**, nanotechnologies, etc.) and be open to **additive manufacturing technologies**, able to ensure a high degree of customisation, especially in the making of accessories, details and components.

Guidelines

For the correct realisation of your proposals, keep into consideration the following guidelines:

Product typology: you are invited to propose a family of **different-size cabinets** (see *Material files*) to employ in **medical environments**, with an attention to **innovation** and a **very refined design**, specifically designed for improving the **usability of the final user** and capable of **fitting well with the various settings** inside the venues where they are employed, **putting the individual and its needs at the centre**. Keep into consideration that the various cabinets, once placed side by side, might give life to **several compositions** (see *Material files* for some examples).



Functions: the cabinets you propose, in addition to performing the main function they are meant for - **containing** - shall have a special focus on **safety**, providing locking and/or access control solutions. Furthermore, with a view of giving maximum importance to the final user, they shall take care of the finest details for the **user experience** and **their practicality to be moved**. Ultimately, it is of the greatest importance that your solutions ensure the **greatest ease of sanitization**.

In particular, the family of cabinets shall perform the following three functions:

1. Containing/archiving documents and medical reports with sensible data: this function will find application in the areas reserved to personnel. It is fundamental that access control to the content and its confidentiality are ensured. The proposals aimed at improving the archiving and organising of the contents will be appreciated, even by means of digital and technological solutions;

2. Containing clothes and personal belongings of the patients: this function will be mainly used inside the patients' rooms, granting an easy access to one's own personal belongings and at the same time providing for the safety of the content. Your projects shall include the employment of a safe or similar to grant the highest degree of safety for the objects there contained. Also in this case, digital and technological solutions will be appreciated, for example by using accessories and/or systems able to recharge the electronic devices of the patients when stored inside;

3. Containing medicines: this function will be used in the areas reserved to the medical and auxiliary personnel and shall allow for a practical storing and access to medicines. The solutions able to improve the medicines management, suggesting digital and technological solutions such as the monitoring of the availability and expiration date of the medicines will be appreciated. Keep into consideration that some medicines and drugs might require a temperature-controlled storage (see *Material files* for some examples).

With the aim of performing all the various functions, the cabinets might use **special accessories** or be **specifically equipped** according to the use. You are free to employ graphics that may facilitate the use of the product (see *Material files*).

Mobility: in order to facilitate the movement of the cabinets across the various areas of the venues, equip your projects with **wheels** and – so far as is possible – **keep their weight and size at its minimum**.

Shape and size: avoid using sharp edges to guarantee the maximum safety of the final users. **Avoid shapes and elements** that may retain dirt, thus impairing the sanitization. The **size shall comply with the standard** for this product typology and shall **allow for a practical movement** of the cabinets across the various areas of the venues, passing through standard sized doors (90cm

width x 210cm height). The solutions able to address also the needs of people on wheelchairs, with mobility impairments or using medical guards, etc. will be appreciated.

Technologies: in order to allow for a better versatility and granting a better attention to the user, your cabinets shall be **equipped for the interaction with electronic devices** and ensure a possible development in the **Internet-of-Things (IoT) scene**, suggesting **interactions, sensors** and use scenarios.

Materials and environmental compliance: the family of cabinets shall be designed with a special attention to environmental issues, opting for **low-environmental impact materials**, capable also of ensuring a **practical sanitization**, avoiding for example porous materials. The choice of the most apt materials will also contribute to **reducing the emission of VOCs** (Volatile Organic Compounds) inside the venues. You may also suggest the use of **additive manufacturing technologies** to ensure a greater degree of customisation for components and accessories. Materials containing formaldehyde or, in any event, not complying with the medical environment requisites are forbidden.

Where to use: the cabinets will be employed in **medical environments**, including **hospitals, clinics and nursery homes**; they shall be **versatile** and **suitable** for being used in **different areas** inside the venues where are employed, **from the entrance hall to the patient rooms** and the **work spaces** reserved to personnel.

Style: the cabinets you propose shall have an **innovative** and **sober style**, with a **contemporary design**, able to present themselves as **technological products** in line with the values of the Missaglia brand.

Values to convey: the cabinets shall be able to convey the values of Missaglia, starting from their mission to work “**for the well-being and care of the individual in compliance with social and environmental sustainability**”, thus paying the due attention to all the aspects related to **ease of use** and **user experience**. Equally important the attention to convey the passion of the brand for the creation of **Made in Italy** products with a high degree of **innovation**, while maintaining a **sober and simple style**, with a **very refined** and **functional design**.

Logo: the Missaglia logo, provided in the *Material files*, shall be present and visible on the various cabinets you suggest.

Target: the cabinets will be employed in hospital and nursing venues, adapting to the various environments and shall mainly address the **healthcare worker** and **patient**.

Deliverables: upload all the images that better present your projects (rendering, descriptions, CAD files, etc.), preferably attaching the 3D files in .stp or .igs formats. If necessary, remember that you can also attach a .ZIP archive containing extra materials.

Evaluation criteria: in the evaluation of your submissions Missaglia will take into account the following criteria:

Degree of Innovation (5/5)

Aesthetics (5/5)

Functionality/Usability (5/5)

Eco-friendliness (4/5)

Compliance with the brand (4/5)

Language: since we are an international Community, all texts provided with your uploads (abstract, description, tags, etc.) should be written in English.

Contest timeline

Upload phase:	27 th September – 20 th December 2017 (1.59 PM UTC)
Community Vote:	20 th December 2017 – 11 th January 2018 (1.59 PM UTC)
Client Vote:	from 11 th January 2018
Winner announcement:	approximately before the end of February 2018.

Optional deadlines

Concept revision:	27 th October 2017 (1.59 PM UTC)
End of hidden option:	7 th November 2017 (1.59 PM UTC)

Concept revision: deadline for requiring an optional revision on your project by the Desall team. In order to request a revision, save your project as draft and send your request via e-mail or through the contact form. **The revision is NOT mandatory:** it serves only as a further opportunity for the participants but does not constitute a condition for participation, nor does it constitute any advantage in the final evaluation.

End of “hidden option”: deadline for setting the design privacy of your submissions to “hidden” (cf. [FAQ](#))



Eligibility and submission

Participation is free of charge and open to designers and creative talents of any nationality aged 18 years or older. Participants can present one or more projects, but only the projects published on the www.desall.com web site, via the upload page related to “Design By Your Side” will be accepted.

Award

1st: €3.000

The selection of the winner by Missaglia will be the result of an unquestionable evaluation and it will take into account originality, feasibility and consistency with the brief presented.

Option right

For the duration of the option right, the Sponsor offers an extra chance to all participants setting a price of Euro 1.500,00 (one-thousand-five-hundred/00) for the purchase of the license for the economical exploitation of the projects not-acknowledged as the winning proposals.

For more info, please login and read the [Contest Agreement](#) from the upload page. For questions about the brief please use the “Have a question” button or write to contest@desall.com.

Submission Guidelines

Project images: the first image attached from the upload page will also be used as the preview of the project in the gallery. In order to better present your project and draw the attention of the sponsor, we suggest you to choose a content that provides an overall idea of the whole project in one single image, briefly including all the contents that will be further presented in the following images.

We also suggest you to use all five image slots available from the upload page of the contest and - where possible - to present several views of the project giving also an indication of the main dimensions of the product.

For product design contests in particular, we suggest you to include at least one image with your project on neutral background and no writings.

For the rendering and presentation of your project, the use of copyrighted images, even if slightly edited, is prohibited.

In case of using materials owned by third parties (ex. stock images, stock videos, texts, etc.), make sure you are granted all the licenses needed for participating in the contest, as further specified in the Contest Agreement.

In case of submitting multiple projects or concepts, you have to repeat the upload procedure for each project: do not submit multiple projects with a single submission.

You are required to upload at least 1 image; image ratio: preferably 4:3; allowed file formats: .jpg, .gif or .png; colour mode: RGB; maximum file size: 1MB.

Descriptions: we suggest you to use the appropriate fields, “Abstract” and “Description”, to include all textual information about your project. We discourage you to include textual description inside your images, as they might result difficult to read (at all events, we suggest you to include at least one image - if possible - with your project on neutral background and no writing). In the “Abstract” field you have maximum 500 characters to include a short summary of your project while in the “Description” field you can include all the remaining information.

Additional material: in addition to the project images, you are invited to attach further materials in a .ZIP archive (NO other file extensions are allowed, such as .RAR) through the “Archive File” field on the upload page. Among the various materials, you may include CAD files, PDF with further descriptions on the project, photos of any models or prototypes, high-resolution images of the project images and 3D files (preferably in .stp or .igs format - you may also include a PDF 3D file for a rapid visualisation). The maximum size of the .ZIP archive is 100MB. You may also attach a video presenting your project through the “Video File” field from the upload page, including it inside a .ZIP archive with a maximum size of 50MB.

Concept revision: within the first weeks of the contest, you might ask for a revision on your project by the Desall team. In order to do so, you are required to save your project as draft and send your request via e-mail (contest@desall.com) or through the contact form. The deadline for requiring the concept revision is specified in the Optional deadlines paragraph inside the brief.

Hidden option: only in case of public gallery contests, you can submit your project with “hidden” design privacy option, provided that you submit your project within the first half of the upload phase. By doing so, your project will remain hidden for all other users until the opening of the Community Vote, if any. At all events, your project will always be visible for the Sponsor regardless of the submission date. This option is automatically disabled once the first half of the upload phase has expired: you can find the deadline for activating this option in the Optional deadlines paragraph inside the brief.

You can find further instructions on how to create your account, how to submit your project and other information in the [Tutorials](#) and in the [FAQ](#) sections.