

Hot water generator

FIRE BOX



HOT WATER GENERATOR

Heats cold water up to 140°C, indispensable where hot water is needed for more effective cleaning.

Output coupling M22 x 1.5 male.
Input coupling 3/8" male.



High pressure, high temperature hose with M22 couplings (for connecting to water cleaner).
3.8007.TBAP 29050 (+ 3.8007.RCIN 03755)

FIRE BOX



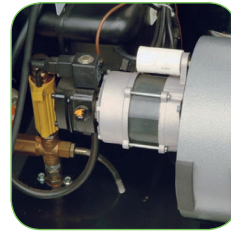
High pressure high temperature hose with M22 couplings (for connecting to the high pressure washer).



Cover and trolley in painted sheet metal, two fixed wheels and one swivelling wheel with brake.



New high efficiency, long life, weld-free boiler made from stainless steel.



Single-phase burner motor directly connected to fan and diesel fuel pump.

Technical characteristics

- Double turn coil and lacquered steel tubing. The coil in the FIRE BOX is 40 m long.
- Heats cold water with a minimum feed pressure of 4 bars.
- Input coupling 3/8" male.
- Safety devices: check valve, safety valve, and flow meter to check for the absence of water.

| Code | Model | Pressure (bar) | Water flow (l/u) | Voltage (Ph-V-Hz-A) | Absorbed power (kW) | Burner fuel consumption (kg/h) | Fuel tank (l) | Weight (kg) | Dimensions (cm) |
|-----------|-----------------|-------------------|---------------------|------------------------|------------------------|-----------------------------------|------------------|----------------|--------------------|
| 3.105.011 | FIRE BOX 40/350 | 350 | 360-1260 | 1-230-50-2 | 0,3 | 7,4 | 18 | 110,8 | 79x75x92 |

