

REPORT REFERENCE GUIDE

The diasend® solution

glooko®
BETTER TOGETHER

CONTENTS

1. SUMMARY

1.1 TIME-IN-RANGE CHART	5
-------------------------	---

2. GLUCOSE

2.1 GLUCOSE STANDARD DAY Patterns of high and low glucose readings over a customized period	6
2.2 GLUCOSE TREND Glucose readings plotted in a graph	7
2.3 GLUCOSE METER SETTINGS	8
2.4 BEFORE AND AFTER MEAL SETTINGS How to set meal times for individual patients	9

3. CGM

3.1 CGM STANDARD DAY Analysis of CGM data in AGP, box plot and modal graphs	10
3.2 CGM STATISTICS Detailed CGM statistics over a 24 hour period	11

4. INSULIN

4.1 INSULIN DAY BY DAY INCLUDING LGS/PLGS DATA Shows data from pumps that automatically suspend and resume insulin delivery.	12
4.2 INSULIN WEEK Shows daily and weekly basal and bolus distribution	13
4.3 INSULIN BOLUS DOSES Daily bolus doses displayed in a graph	14
4.4 INSULIN PUMP SETTINGS	15
4.5 COMPARE PUMP SETTINGS View and compare pump settings from the latest uploads	16
4.6 INSULIN BOLUS ADHERENCE Log of when pumps recommended boluses have been overridden	17
4.7 INSULIN DOSE OVERVIEW (PEN VIEW) Shows data from connected pens, with both long and short acting doses	18

5. COMPARISON

5.1 COMPARISON LOGBOOK/TABLE	19
Consolidated data from insulin pumps, glucose meters and CGMs in a logbook view	
5.2 COMPARISON DAY BY DAY	20
Consolidated data from insulin pumps, glucose meters and CGMs displayed in tables and graphs	
5.3 COMPARISON DAY BY DAY (PEN VIEW)	21
Consolidated data from insulin pens, glucose meters and CGMs displayed in tables and graphs	
5.4 COMPARISON DAY BY DAY OVERVIEW (PRINT TO PDF)	22
Create a pdf with a 14 day overview to view on paper	

6. PDF WIZARD

6. PDF WIZARD	23
How to set up a favorite PDF report profile	

diasend® is indicated for use by individuals or healthcare professionals in the home or health care facilities for transmitting data from home monitoring devices such as glucose meters and insulin pumps to a server data-base to support diabetes management. The device is indicated for professional use and over-the-counter sales.

INTRODUCTION

diasend® empower diabetes management by collecting and unlocking the power of data from blood-glucose meters, CGMs, insulin pumps, pens and activity trackers – bringing insights together in one place. Data is easily uploaded - remotely via app or in-clinic, securely shared and visualized in actionable charts and graphs. This creates a solid foundation enabling collaboration and confident treatment decisions. diasend® is compatible with the vast majority of diabetes devices available, giving people with diabetes and their care teams the freedom of choice.

Summary Page

Here you will see the key graphs for analyzing glucose, insulin, carb intake, and activity close to each other, giving you an instant overview of the patient profile.

Glucose Standard Day Report

Can be used to assist the healthcare professional in identifying areas or time periods to improve the medical outcome for each patient.

CGM Reports

Clearly display data to help assist the HCP in identifying problem areas and/or times for each patient. You can use the CGM Standard Day report to identify the range of CGM readings by the time of day or look at the CGM statistics to check SD and averages by the hour.

Insulin Bolus Dose Report

Check for patterns of how the patient is bolusing. This will help identify when the patient is doing well and where they need to improve.

Bolus Adherence Report

Easily see what the pump has calculated for the patient's bolus against the insulin amount that was actually delivered by the pump.

Insulin Pump Settings Report

View historical data to easily compare and contrast pump settings from different time periods.

Patient overview

Designed to improve the ability for clinics to quickly identify and support patients that are in greatest need of support. Allowing you to view them in a way that best fits your workflow.

This view will include all patients with CGM data and it is their data from the last 14 days that are used for the calculations.

It is possible to sort the patients based on:

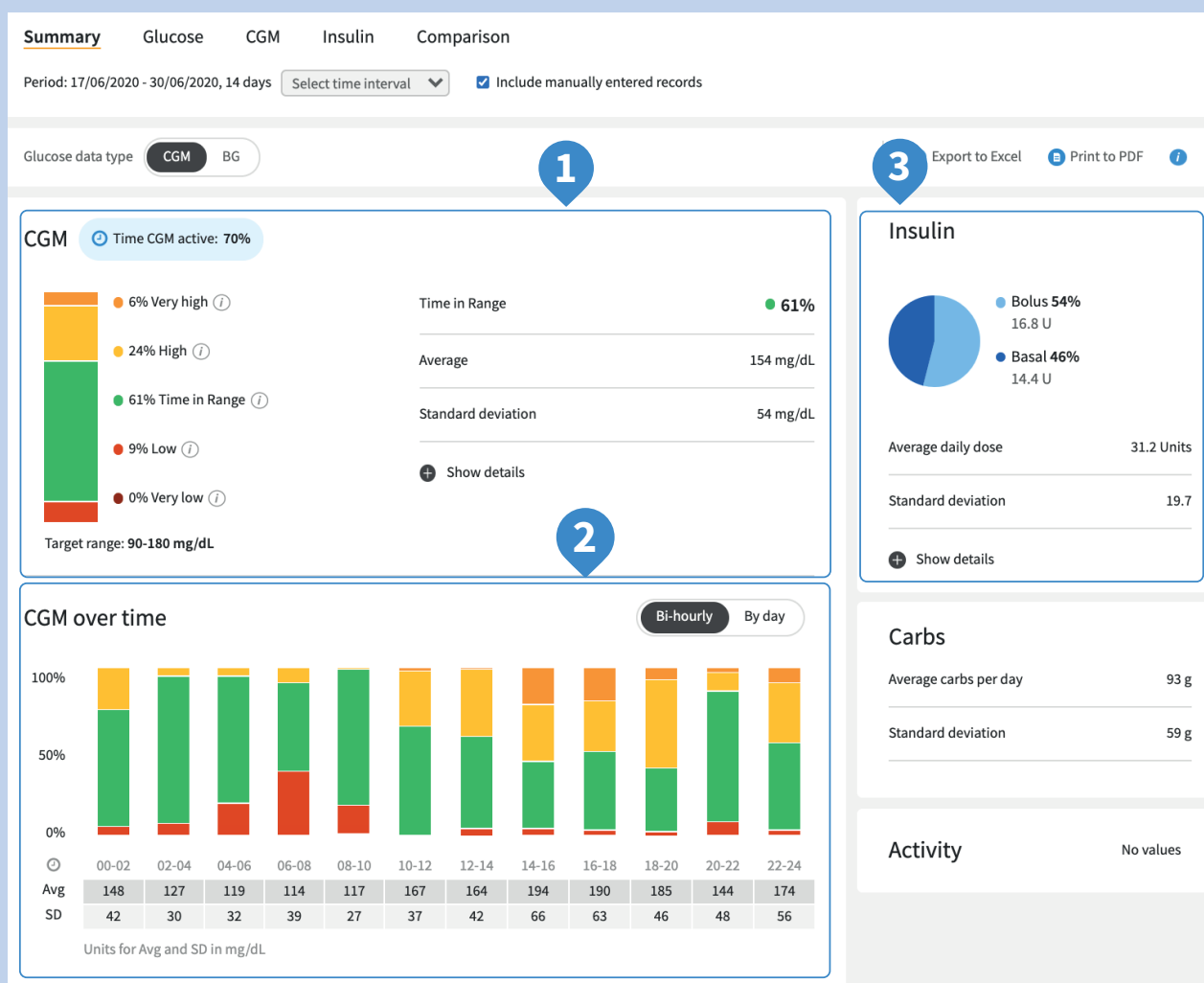
- Time In Range (%) a range set by Glooko
- Severe low (%) below 3.0 mmol/L respective 54 mg/dL
- CGM duration (%)
- Latest CGM reading (date)

The Comparison Logbook/Table Report

Gives the HCP insight into glucose measurement, carb intake and cannula fills, as well as boluses, priming, and suspend events, which assists in evaluating events by time and day (and may aid in identifying patterns). This report view also displays ketones if this is saved in the meter.

Settings Tab

Easily change the default blood glucose target range for the clinic and also individual patients as well as setting up customized PDF reports.



1. SUMMARY

The summary page is intended to give you a quick overview of the data available for a patient at a selected time interval.

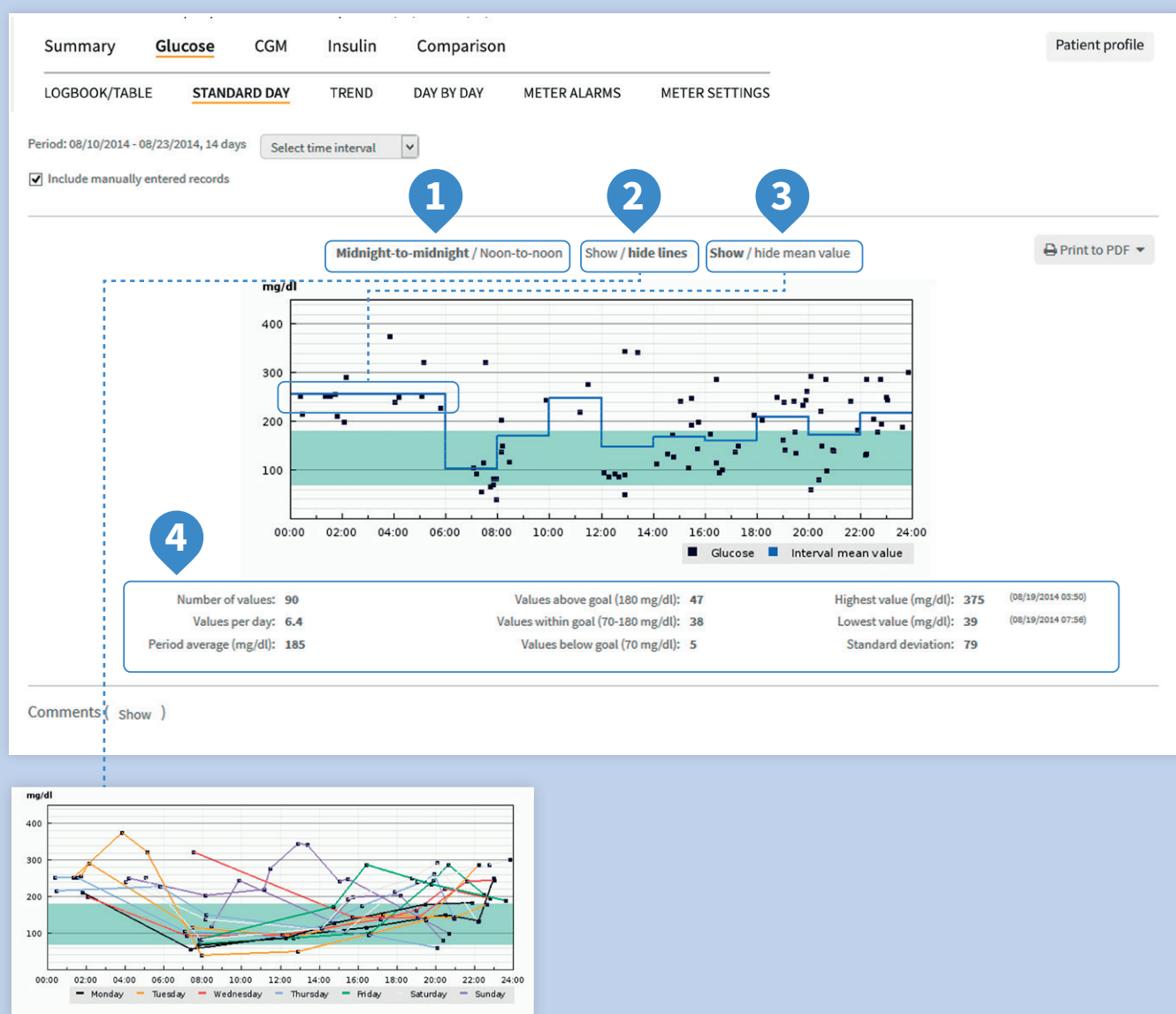
- 1 To analyze glucose data from CGM systems or BG-meters use this Time-in-Range Chart. A toggle function above the chart lets you switch between CGM and BG.

- 2 This chart shows you the distribution of the glucose data in 2-hour-segments over a standard day. The table below displays average glucose and standard deviation.

The toggle function allows you to review the data by day-of-week.

- 3 Quickly view insulin distribution, average daily dose and standard deviation.

Click the plus sign to see more key figures.

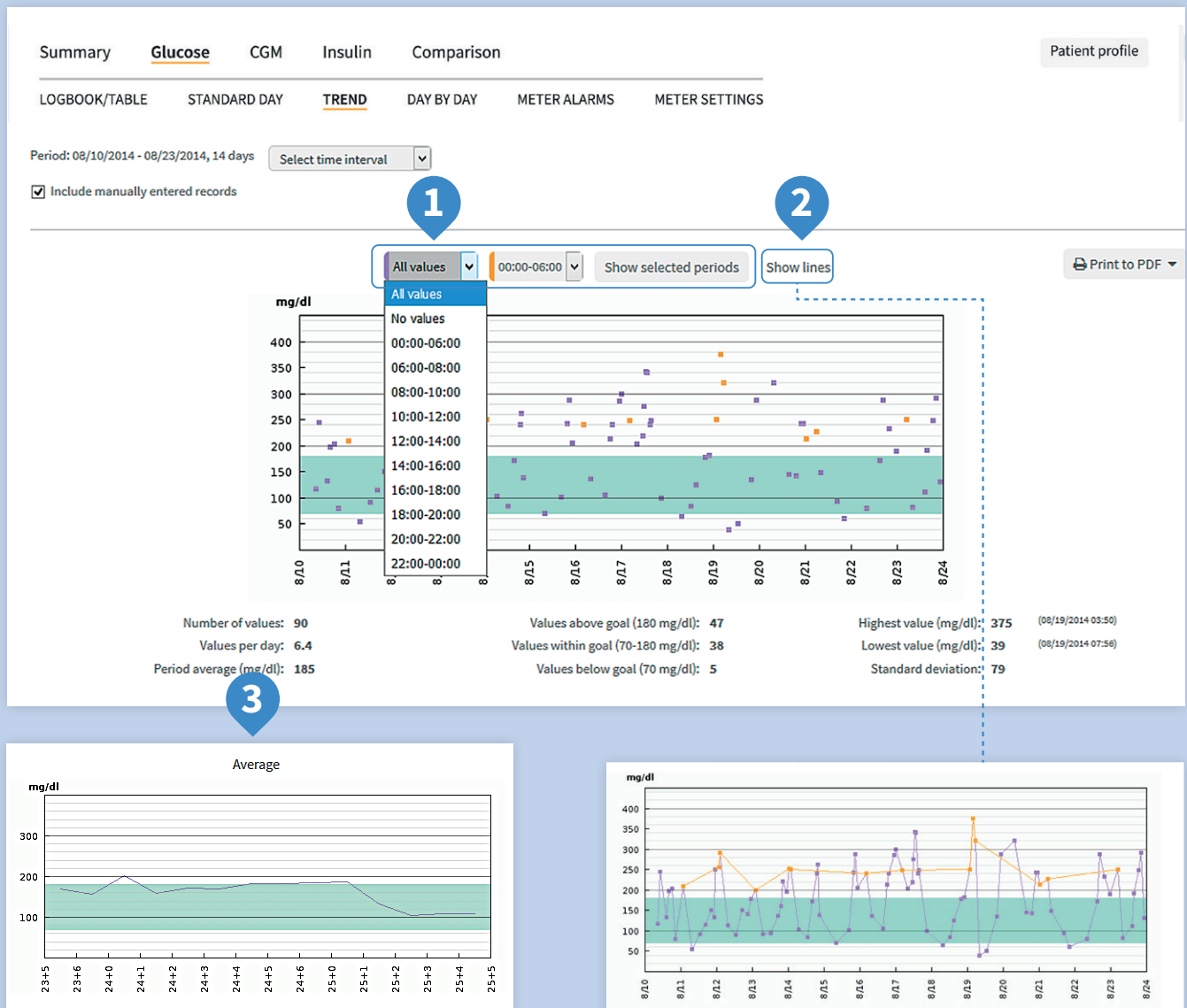


2.1 GLUCOSE STANDARD DAY

An overview of glucose readings plotted by time during a standard 24 hour day.

Can be used to identify patients who are not testing regularly and/or look at different time periods to identify problems.

- 1 You can select a midnight-to-midnight or noon-to-noon view over the selected date range.
- 2 You can choose to show lines to connect the values relating to each day of the week in different colors.
- 3 View the mean value by clicking on this link.
- 4 Statistics can be found at the bottom of each report.



2.2 GLUCOSE TREND

This displays a trend overview of glucose readings by date.

- 1 This view also offers the possibility to look at values during specific time periods such as before or after meals.
- 2 Click here to Show lines.
- 3 Additional graphs available with the diasend® pregnancy package.

Summary **Glucose** CGM Insulin Comparison Patient profile

LOGBOOK/TABLE STANDARD DAY TREND DAY BY DAY METER ALARMS **METER SETTINGS**

Meter settings for serial number: **1** Print to PDF

General		Correction target (Range)		Correction factor		I:C (g option)	
Setting	Value	Setting	Value	Setting	Value	Setting	Value
Food unit	Grams of carbs	All day	90 mg/dl - 144 mg/dl	All day	49 mg/dl	Morning	10 g
Dose Increments	1 U					Midday	12 g
Correction Target Type	Range					Evening	14 g
Insulin Log Feature	Off					Night	12 g
Insulin Calculator	Advanced						
Notes Feature	Off						

General **Health events** **2**

Setting	Value	Setting	Value
Meal excursion	76 mg/dl	Exercise 1	-25 %
Snack limit	20 g	Exercise 2	-42 %
Active timeout	02:45:00	Stress	22 %
Offset timeout	01:30:00	Illness	33 %
		Premenstrual	16 %

Timeblock

Setting	00:00-06:30	06:30-12:30	12:30-18:30	18:30-22:30	22:30-00:00
Target interval min	68 mg/dl	72 mg/dl	79 mg/dl	63 mg/dl	80 mg/dl
Target interval max	119 mg/dl	146 mg/dl	148 mg/dl	153 mg/dl	120 mg/dl
Carb ratio, insulin	1.9 U	2.6 U	2.1 U	2.5 U	2 U
Carb ratio, carbs	11 g	13 g	14 g	15 g	12 g
Insulin sensitivity, insulin	0.9 U	0.7 U	3.1 U	1.8 U	50 U
Insulin sensitivity, carbs	52 mg/dl	7 mg/dl	978 mg/dl	59 mg/dl	649 mg/dl

2.3 GLUCOSE METER SETTINGS

This shows the settings for meters that have advanced settings activated.

Meter settings data is displayed in different formats depending on the device that is uploaded.

1 Example of the meter settings from the Freestyle InsuLinx.

2 Example of the meter settings from the Aviva Combo.

The screenshot shows a patient registration form with the following elements and numbered callouts:

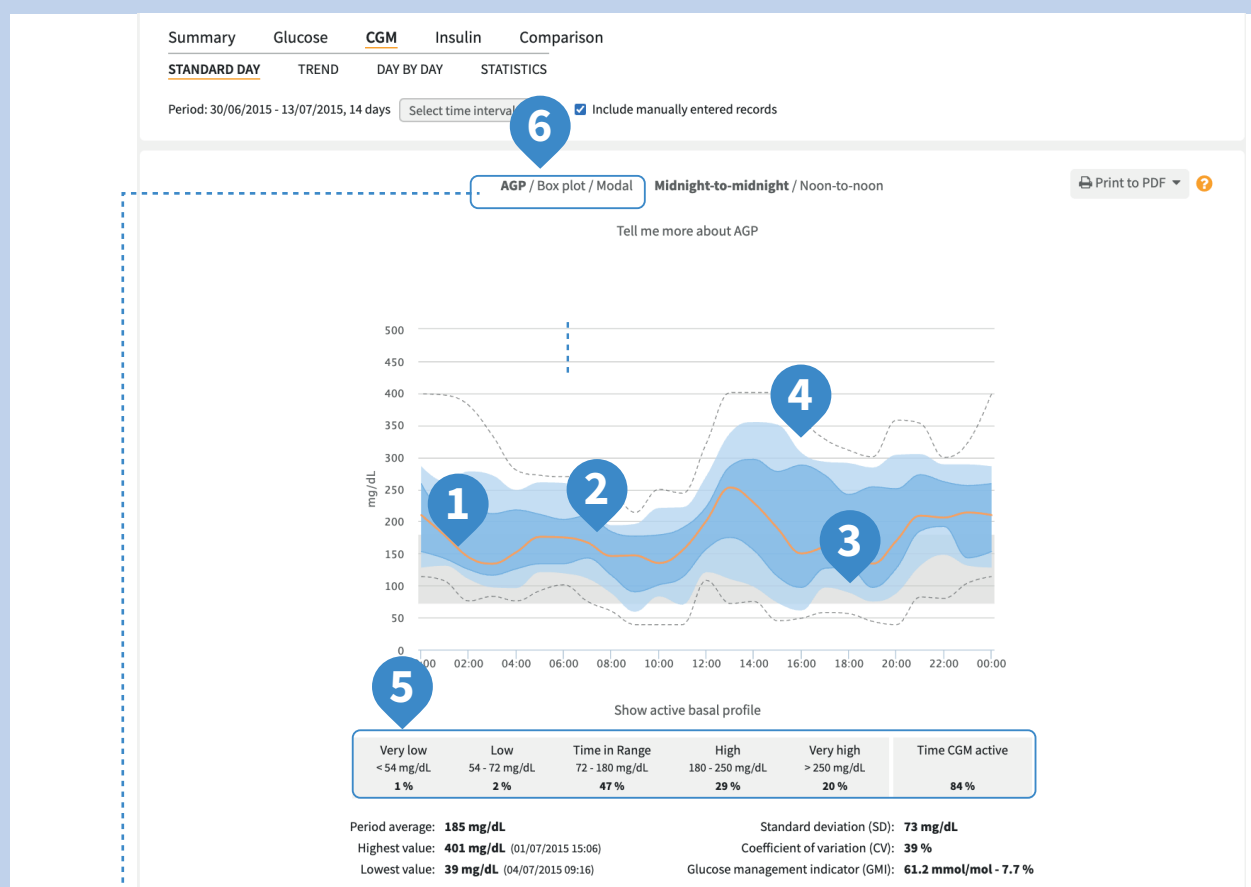
- 1**: Points to the "My profile" button in the top right corner.
- 2**: Points to the "Expand registration form" button.
- 3**: Points to the "Permanent intervals" radio button under the "Intervals" section.
- 4**: Points to the meal time selection table, which includes dropdowns for intervals before and after meals, and specific times for breakfast, lunch, dinner, and bedtime on weekdays and weekends.
- 5**: Points to the "Save my information" button at the bottom of the form.

The form includes tabs for Summary, Glucose, CGM, Insulin, and Comparison. A note states: "(*) means that the fields are compulsory". The "Personal details" section includes fields for First name (*), Last name (*), Personal ID, Date of birth (yyyy-mm-dd), and Gender. The "Intervals" section has two options: "There are no permanent intervals for the patient (default setting)" and "Permanent intervals". The "Save my information" section includes a note: "When you're done, click 'Save my information' below".

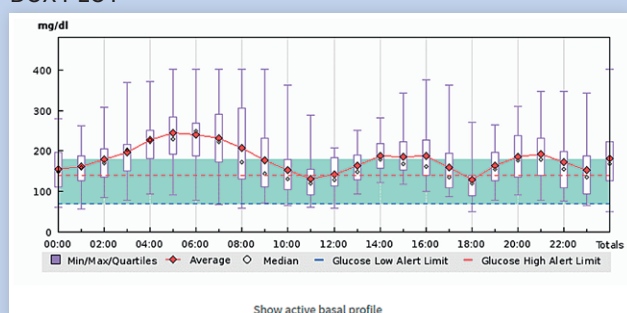
2.4 BEFORE AND AFTER MEAL SETTINGS

You can choose if you want to display time intervals, or you can set it to show before and after meal times.

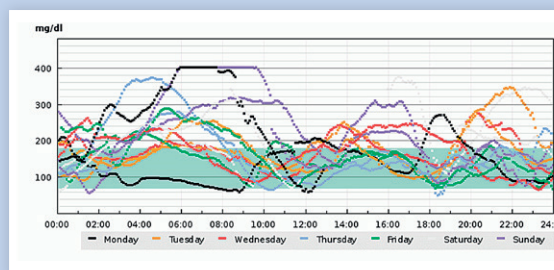
- 1** Click on the Patient profile tab.
- 2** Expand the registration form to set the meal times for the patient.
- 3** Click on permanent intervals.
- 4** Set the meal times.
- 5** Click to save the information.



BOX PLOT



MODAL



3.1 CGM STANDARD DAY

This mode shows the distribution of values per hour of the day, spanning over multiple days.

- 1 The median line represents the middle of the value series within each hour.
- 2 The darker blue area represents the Interquartile range ("IQR"), meaning the middle 50% of the values are within this range.
- 3 The lighter blue area represents the 10th and 90th

percentile, meaning that middle 80% of the values are within this range

- 4 The maximum and minimum values are also visualized.
- 5 The statistics table below the AGP graph shows CGM related key figures such as Time-in-Range and the percentage the CGM has been used.
- 6 You can click on this link to choose to see the values as an AGP, Box plot or modal graph.

Summary
Glucose
CGM
Insulin
Comparison

Patient profile

STANDARD DAY
TREND
DAY BY DAY
STATISTICS

Period: 08/19/2014 - 09/01/2014, 14 days
Select time interval
▼

☒ Include manually entered records

1

Print to PDF ▼

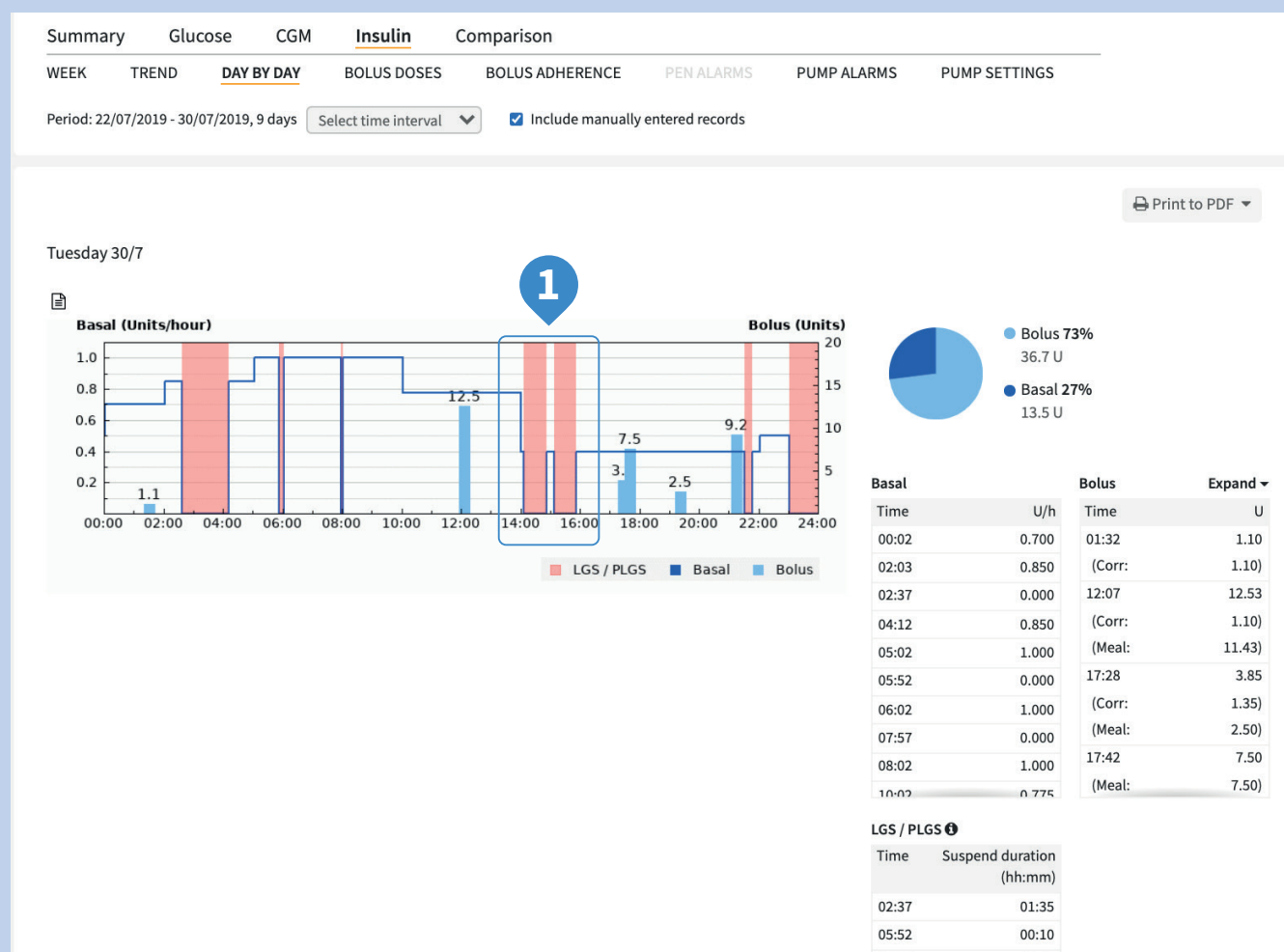
	00	01	02	03	04	05	06	07	08	09	10	11
# of CGM Readings	159	167	168	168	168	168	168	168	168	162	156	152
Median CGM Value (mg/dl)	149	160	170	202	226	230	248	223	172	143	130	121
Avg CGM Value (mg/dl)	156	161	178	197	227	244	241	231	208	176	152	131
Min (mg/dl)	62	57	86	78	94	91	78	67	59	71	65	62
25% Quartile	112	127	135	151	181	193	187	172	132	111	105	91
75% Quartile	197	188	206	216	250	283	269	290	305	231	178	156
Max (mg/dl)	279	261	308	369	372	401	401	401	401	401	363	287
SD (mg/dl)	51	47	53	62	64	74	84	90	100	91	66	48

	12	13	14	15	16	17	18	19	20	21	22	23	Totals
# of CGM Readings	137	129	132	132	143	139	145	156	155	143	132	143	3658
Median CGM Value (mg/dl)	129	149	178	169	162	136	119	155	177	180	154	135	169
Avg CGM Value (mg/dl)	141	163	187	186	188	160	128	164	186	192	172	152	181
Min (mg/dl)	59	93	122	118	100	88	51	78	92	79	76	66	51
25% Quartile	113	129	157	153	140	110	89	127	136	139	110	93	127
75% Quartile	183	189	218	223	227	194	139	197	238	232	198	187	223
Max (mg/dl)	208	251	282	343	375	363	271	264	309	347	346	343	401

3.2 CGM STATISTICS

This table includes detailed CGM statistics over the time period selected by hour of the day, check SD (standard deviation) and averages by the hour.

- 1 Statistics from a particular hour of the day.



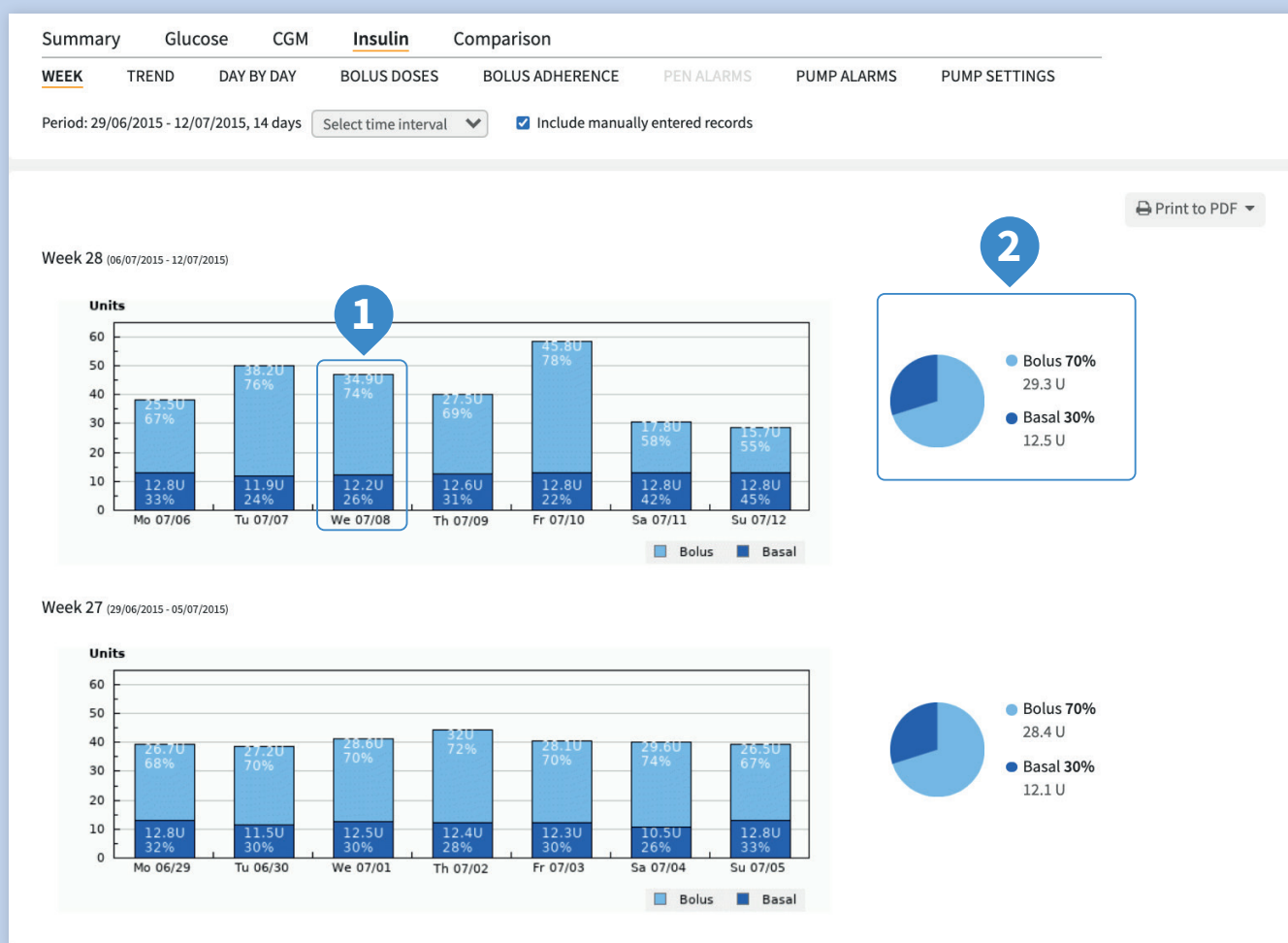
4.1 INSULIN DAY BY DAY INCLUDING LGS/PLGS DATA

Some insulin pumps on the market today have a function making it possible to automatically suspend and resume insulin delivery.

Insulin delivery will be suspended when the blood glucose level is low or is predicted to be low within a certain time, and resume once the blood glucose level has gone up.

The terms **Low Glucose Suspend (LGS)** and **Predictive Low Glucose Suspend (PLGS)** are used in diasend® today. For the Tandem T:Slam X2 it is called Basal-IQ.

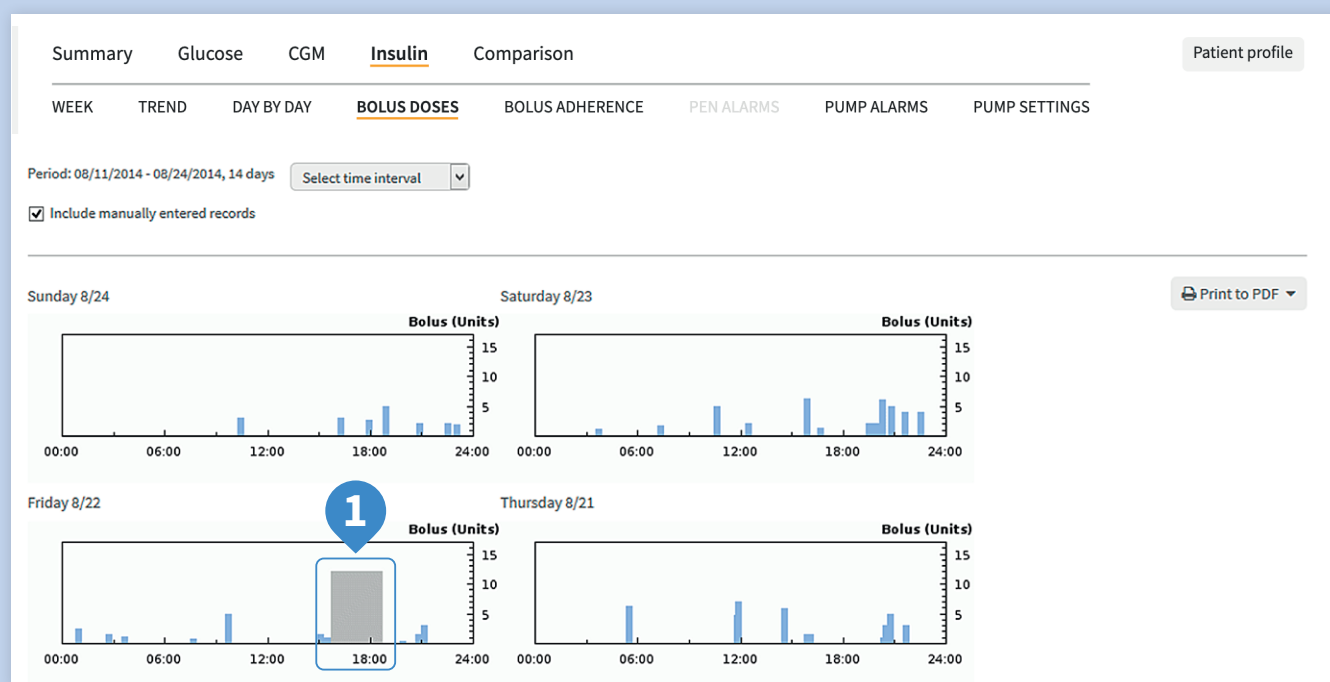
1 When the insulin delivery is suspended by the insulin pump, it will show in diasend® as a red bar. In addition, the blue basal line will drop to zero.



4.2 INSULIN WEEK

Daily and weekly basal and bolus distribution.

- 1 Daily basal-bolus numbers can be viewed in the bar graph.
- 2 You can view the insulin distribution for the week in the pie chart.



4.3 INSULIN BOLUS DOSES

Bolus doses displayed in graph format to easily view daily bolus activity by time of day.

This graph gives you a general overview of the bolus doses over a period of time. Check for patterns of how the patient is bolusing. This will help identify when the patient is doing well and where they need to improve.

For example you can see gaps of missed boluses.

- 1 A combo bolus may be used for high fat/carb meals providing a percentage of the dose immediately and then a slow infusion of insulin spread out over a set amount of time.

Summary Glucose CGM **Insulin** Comparison Patient profile

WEEK TREND DAY BY DAY BOLUS DOSES BOLUS ADHERENCE PEN ALARMS PUMP ALARMS **PUMP SETTINGS**

Period: 08/19/2014 - 09/01/2014, 14 days Select time interval ▼

Insulin pump settings 1 serial number: 2

Select pump settings from upload date: 09/01/2014 05:01 (US/Pacific) 3

4 Print comparison of pump settings to PDF ▼ Print to PDF on 1 page ▼ Print to PDF ▼

Bolus		General		CGM Settings	
Setting	Value	Setting	Value	Setting	Value
Audio Bolus Enable	Disabled	Language Selection Index	English	Transmitter Sound Level	Vibration
Audio Bolus Stepsize per program keypress	0.5 U	Last Keypress to display timeout	30 s	Other Sound Level	Vibration
Advanced Bolus Options enable	Enabled	Auto-Off Enable	Enabled	Glucose High Alert Limit	140 mg/dl
Bolus Reminder Options enable	Enabled	Auto-Off Timeout	16 h	Glucose Low Alert Limit	70 mg/dl
Delivery Speed	Normal	Max 2-Hr limit	30 U	Glucose Rise Alert Limit	2 mg/dl
Insulin	20 U	Occlusion Sensitivity Level	High	Glucose Fall Alert Limit	2 mg/dl
		Insulin-On-Board	Enabled	Glucose Low Alert Snooze Time	60 min
		Insulin-On-Board Duration	4 h	Glucose High Alert Snooze Time	30 min
		Sick days, BG over limit	306 mg/dl	Transmitter Out of Range Alert Snooze Time	60 min
		Sick days, check ketones	2 h	Glucose Low Enable	Enabled
		Sick days, check BG	2 h	Glucose High Enable	Enabled
		Low Cartridge Warning Level	40 U	Glucose Rise Enable	Enabled

Basal

Setting	Value
Max Basal	2 U/h
Max Total Daily Dose	80 U
Active basal program	1

Note! All reports are generated as PDF files.

4.4 INSULIN PUMP SETTINGS

This provides the information of the current and historical settings in the pump to easily review, compare and adjust as necessary.

- 1 Select and view the pump settings from every upload.
- 2 Print a comparison of the latest available pump settings (see page 16).
- 3 Select one of these options to print the displayed pump setting in an expanded version, or in a minimized version where all pump settings are compressed onto 1 page (see page 22 for an example).
- 4 View the Bolus, Basal, General and CGM settings. In this report you can also view I:C ratio, ISF and glucose target ranges.

PRINTED COMPARISON OF PUMP SETTINGS

Patient: Jane Doe Date interval: 08/19/2014 - 09/01/2014
 Patient ID: Number of days: 14
 Glucose meters: - Insulin pump:

Insulin: Pump settings comparison

Insulin pump settings for serial number: . The report compares the settings from the latest eight uploads. Changes are marked.

	Upload date: 01/09/2014	03/05/2014	08/04/2014	08/06/2014	08/08/2014	08/18/2014	08/19/2014	09/01/2014
General								
Language Selection Index	English	English	English	English	English	English	English	English
Last Keypress to display timeout	30 s	30 s	30 s	30 s	30 s	30 s	30 s	30 s
Auto-Off Enable	Enabled	Enabled	Enabled	Enabled	Enabled	Enabled	Enabled	Enabled
Auto-Off Timeout	16 h	16 h	16 h	16 h	16 h	16 h	16 h	16 h
Max 2-Hr limit	30 U	30 U	30 U	30 U	30 U	30 U	30 U	30 U
Occlusion Sensitivity Level	High	High	High	High	High	High	High	High
Insulin-On-Board	Enabled	Enabled	Enabled	Enabled	Enabled	Enabled	Enabled	Enabled
Insulin-On-Board Duration	4 h	4 h	4 h	4 h	4 h	4 h	4 h	4 h
Sick days, BG over limit	306 mg/dL	306 mg/dL	306 mg/dL	306 mg/dL	306 mg/dL	306 mg/dL	306 mg/dL	306 mg/dL
Sick days, check ketones	2 h	2 h	2 h	2 h	2 h	2 h	2 h	2 h
Sick days, check BG	2 h	2 h	2 h	2 h	2 h	2 h	2 h	2 h
Low Cartridge Warning Level	40 U	40 U	40 U	40 U	40 U	40 U	40 U	40 U
Time format	24 h	24 h	24 h	24 h	24 h	24 h	24 h	24 h
BG unit	mg/dL	mg/dL	mg/dL	mg/dL	mg/dL	mg/dL	mg/dL	mg/dL
Bolus								
Audio Bolus Enable	Disabled	Disabled	Disabled	Disabled	Disabled	Disabled	Disabled	Disabled
Audio Bolus Stepsize per program keypress	1.0 U	0.5 U	0.5 U	0.5 U	0.5 U	0.5 U	0.5 U	0.5 U
Advanced Bolus Options enable	Enabled	Enabled	Enabled	Enabled	Enabled	Enabled	Enabled	Enabled
Bolus Reminder Options enable	Enabled	Enabled	Enabled	Enabled	Enabled	Enabled	Enabled	Enabled
Bolus Delivery Speed	Normal	Slow	Normal	Normal	Normal	Normal	Normal	Normal
Max Bolus	20 U	20 U	20 U	20 U	20 U	20 U	20 U	20 U

4.5 COMPARE PUMP SETTINGS

This report shows the pump settings from the latest uploads. You can easily compare changes between uploads.

- 1 The date of each upload.
- 2 For ease of reference all changes, compared to the latest uploads to diasend®, are highlighted in the report.

Glucose

CGM

Insulin

Comparison

Compilation

My profile

WEEK

TREND

DAY BY DAY

BOLUS DOSES

BOLUS ADHERENCE

PUMP ALARMS

PUMP SETTINGS

Period: 08/19/2014 - 09/01/2014, 14 days

Select time interval

▼

1

2

3

4

5

Print to PDF

14 deviating boluses detected out of 45 bolus calculator assisted boluses (out of 100 boluses in total)

Date	Time	Delivered (U)	Calculated (U)	Bolus Type	Duration (min)	Pre-Bolus BG (mg/dl)	Post-Bolus BG (mg/dl)
08/19/2014	14:07	2.00	0.00	ezBG		08/19/2014 14:07 : 234	08/19/2014 15:33 : 184
08/21/2014	11:51	4.75	5.75	ezCarb (Normal)		08/21/2014 11:51 : 69	08/21/2014 11:56 : 72
08/21/2014	11:56	6.90	0.90	ezCarb (Normal)		08/21/2014 11:56 : 72	08/21/2014 14:36 : 123
08/22/2014	02:45	1.55	1.80	ezBG		08/22/2014 02:45 : 218	08/22/2014 03:42 : 225
08/22/2014	03:42	1.20	1.50	ezBG		08/22/2014 03:42 : 225	08/22/2014 07:42 : 150
08/22/2014	07:42	0.85	0.80	ezBG		08/22/2014 07:42 : 150	08/22/2014 15:33 : 179
08/22/2014	15:33	1.00	0.25	ezBG		08/22/2014 15:33 : 179	08/22/2014 19:54 : 132
08/22/2014	19:54	0.40	0.00	ezBG		08/22/2014 19:54 : 132	08/23/2014 03:43 : 79
08/23/2014	03:43	1.10	0.00	ezBG		08/23/2014 03:43 : 79	08/23/2014 07:21 : 184
08/23/2014	12:31	2.05	0.00	ezBG		08/23/2014 12:31 : 191	08/23/2014 15:54 : 341
08/23/2014	15:54	6.25	5.90	ezBG		08/23/2014 15:54 : 341	08/23/2014 16:41 : 370
08/26/2014	22:20	4.00	0.00	ezBG		08/26/2014 22:20 : 332	08/27/2014 13:14 : 177
08/31/2014	08:39	7.00	6.75	ezBG		08/31/2014 08:39 : 361	08/31/2014 09:34 : 400
09/01/2014	12:37	7.90	7.00	ezCarb (Normal)		09/01/2014 12:37 : 126	

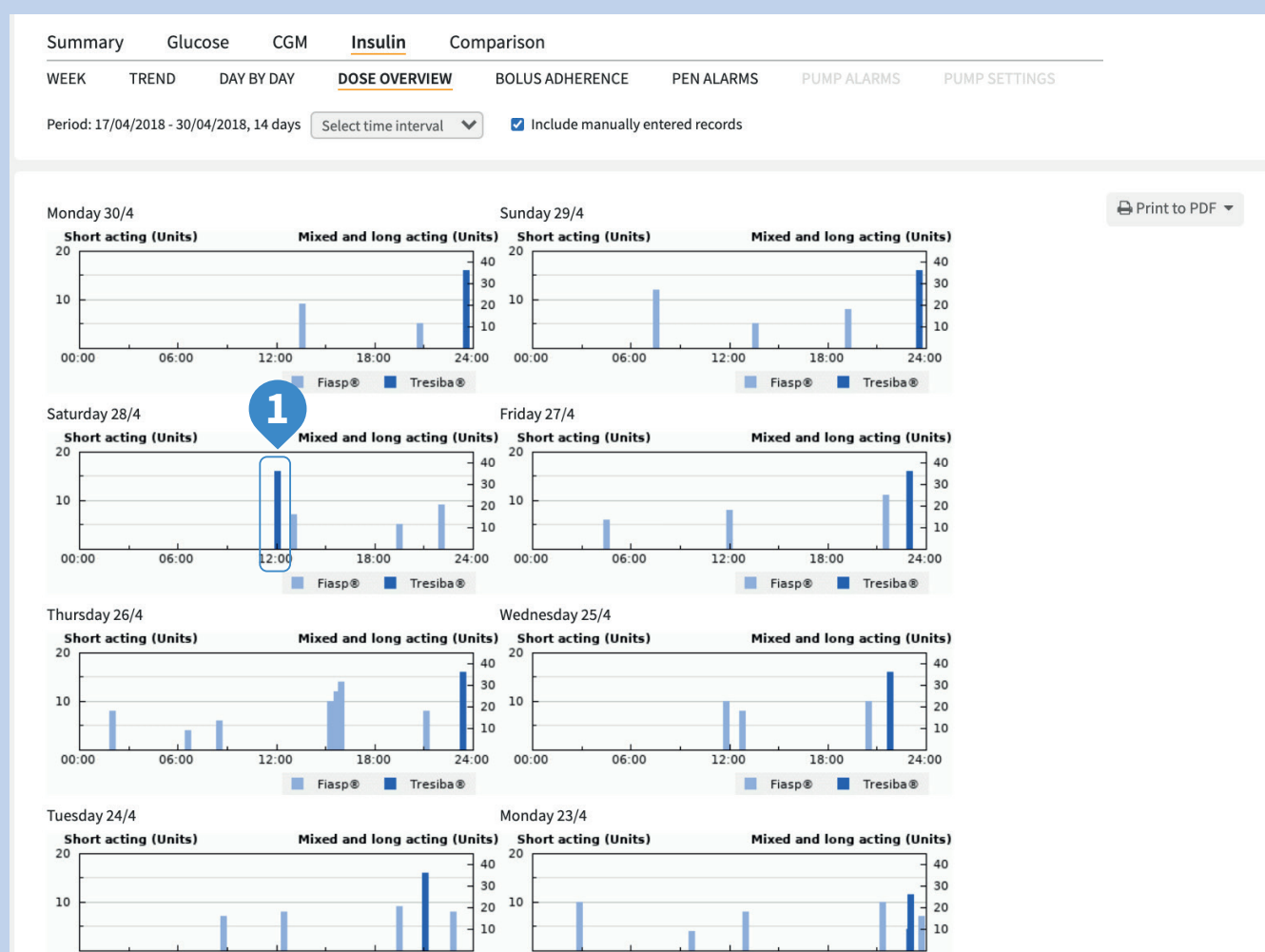
Comments (show)

4.6 INSULIN BOLUS ADHERENCE

Log of when bolus overrides have occurred. This report allows you to see what the pump calculated as the patient's bolus against what the patient actually delivered.

The report displays:

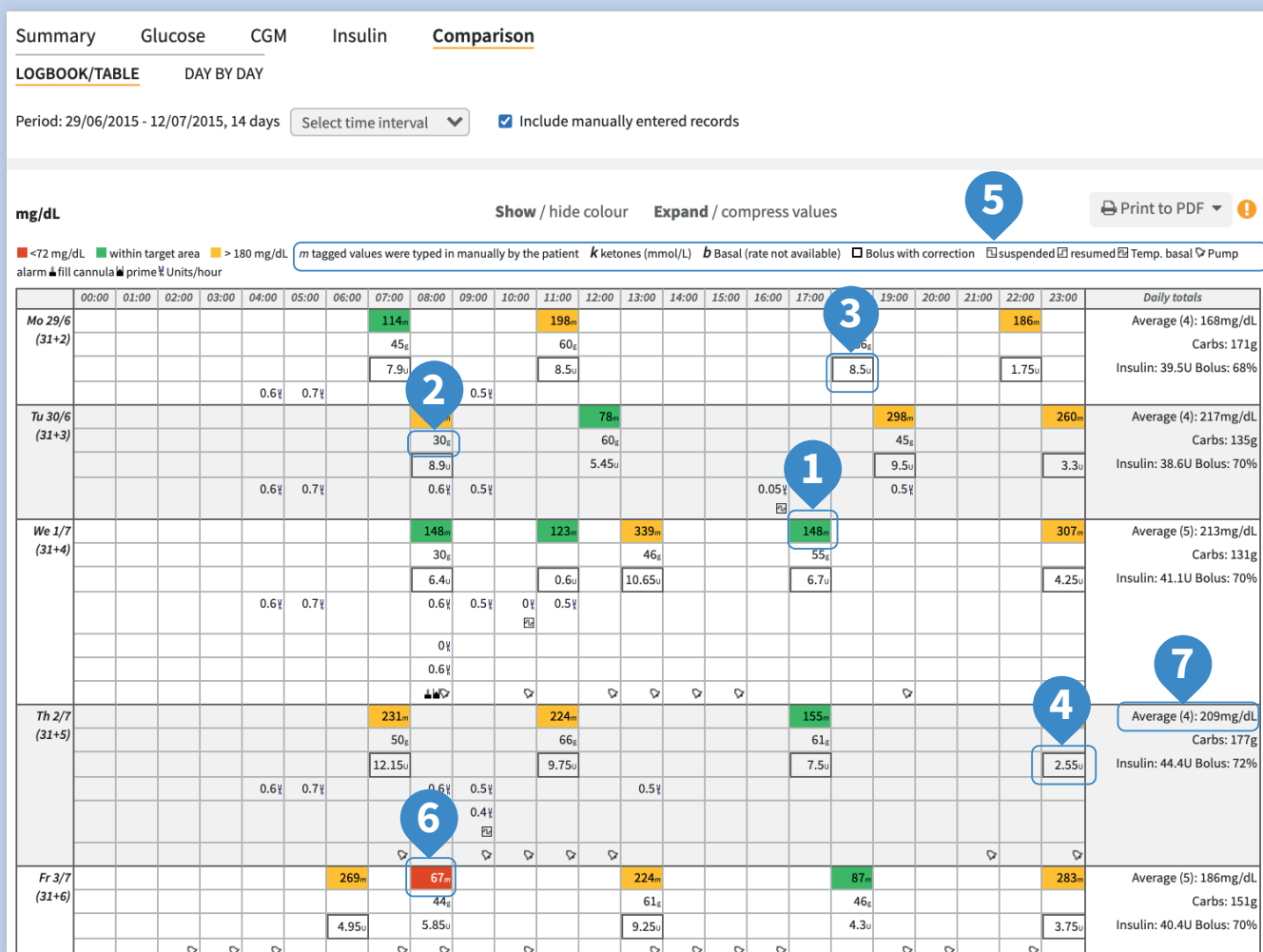
- 1 Insulin actually delivered.
- 2 Amount of insulin suggested by bolus calculator.
- 3 Bolus Type.
- 4 Pre-bolus BG reading.
- 5 Post-bolus BG reading.



4.7 INSULIN DOSE OVERVIEW (PEN VIEW)

A day by day view showing data from smart insulin pens including long-acting, short-acting and mixed insulin.

- 1 In the example above, the long acting insulin dose is delivered at a different time compared to the other days.



5.1 COMPARISON LOGBOOK/TABLE

Consolidated data from insulin pump and glucose meters in a logbook view. Gives the HCP insight into glucose measurement, carb intake and cannula fills, as well as boluses, priming, and suspend events, which assists in evaluating events by time and day (and may aid in identifying patterns). This report view also displays ketones if this is saved in the meter.

1 The free standing numbers are glucose readings color-coded depending on the patient profile's set target range.

2 "g" stands for grams of carbohydrates.

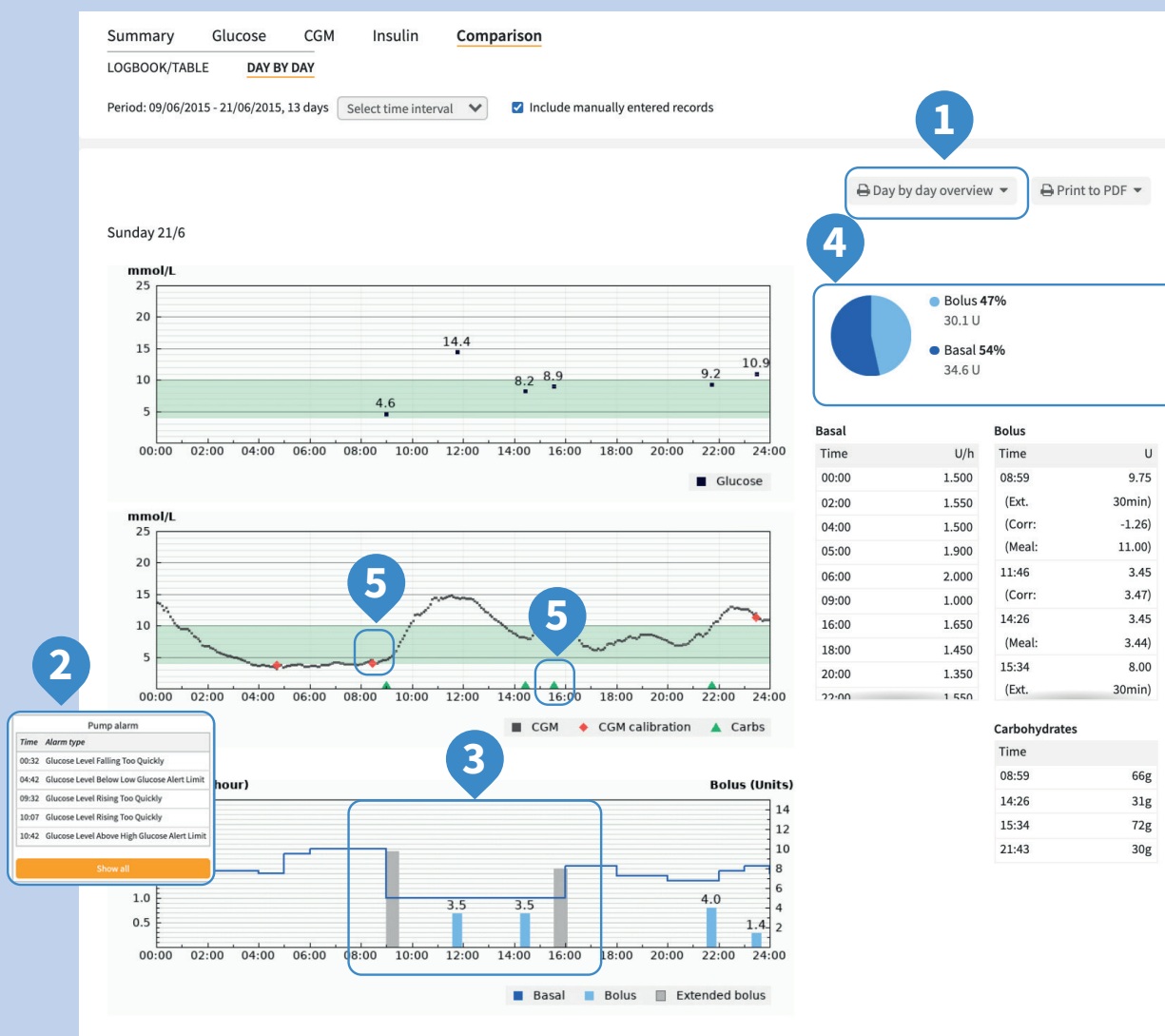
3 "U" stands for units of insulin.

4 The box indicates that a correction was made.

5 You can view pump events.

6 Yellow = above target range
Red = below target range
Green = within target range

7 Daily averages also available

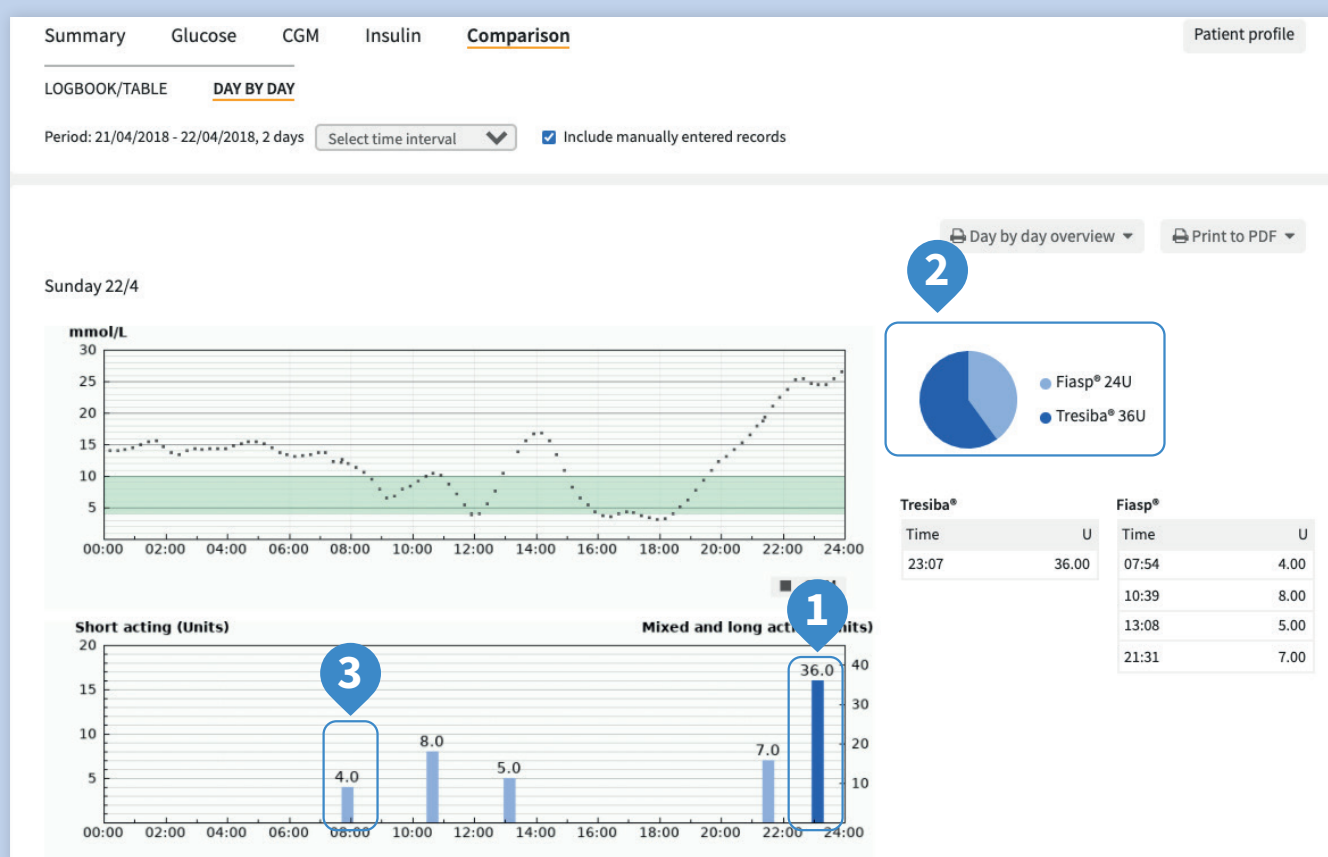


5.2 COMPARISON DAY BY DAY

A day by day view of consolidated data from insulin pumps, glucose meters and CGMs in table and graphs.

- 1 Click on this button to see a 2 week overview on one page (see page 21 for a sample).
- 2 Details of events and alarms can be seen if you hover over the icons above the graph.
- 3 The bolus and basal graph will display insulin data which includes basal rate, temporary basal rate, boluses doses, combination boluses.

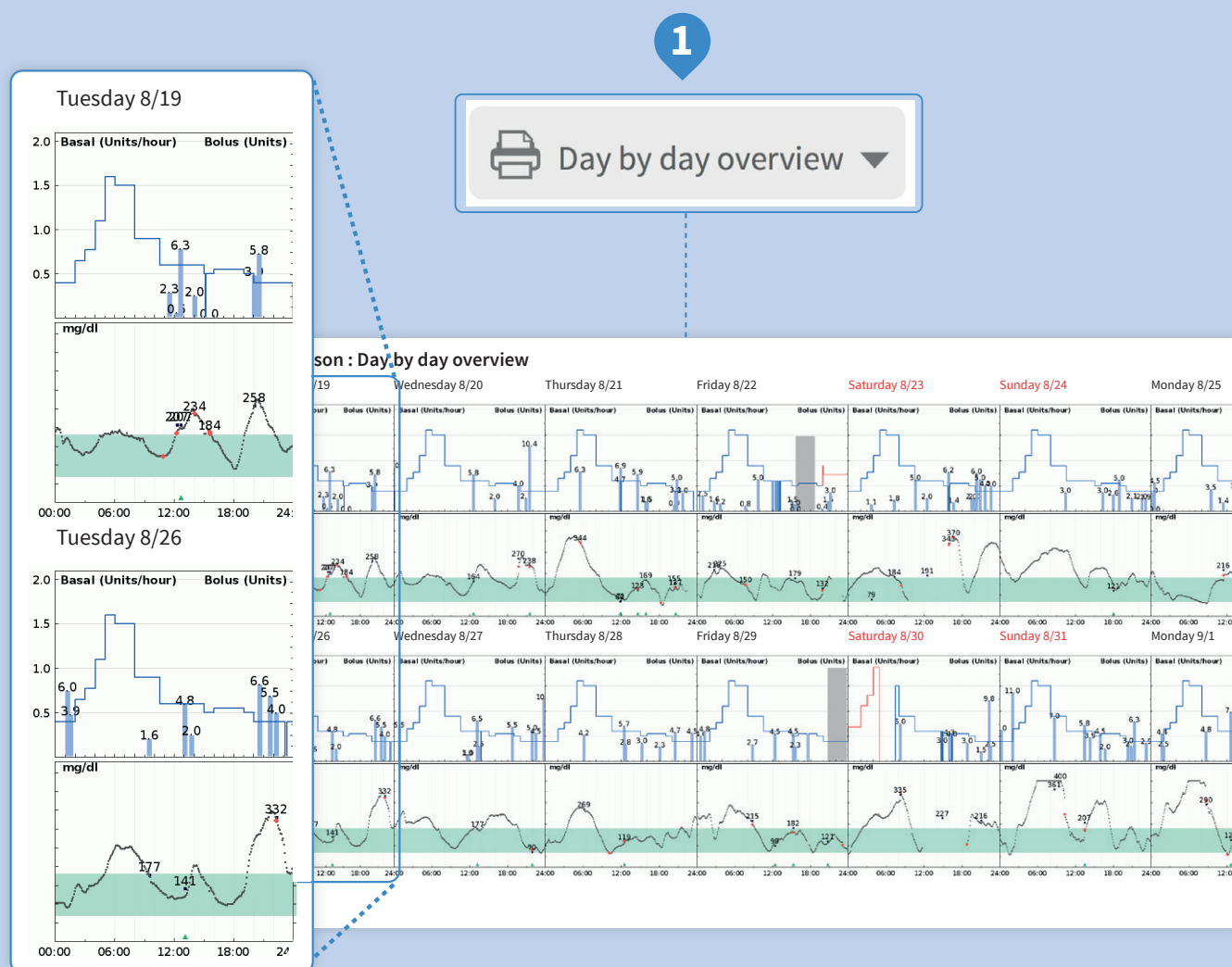
- 4 You can view the daily total basal and bolus insulin distribution which is displayed in a separate pie chart.
- 5 You can view the carbs in this graph as well as the CGM curve and calibrations if CGM has been uploaded.



5.3 COMPARISON DAY BY DAY (PEN VIEW)

A day by day view of consolidated data from smart insulin pens and CGMs in table and graphs.

- 1 The long acting insulin is presented as a bar (dark blue) together with the bars of short acting insulin (light blue).
- 2 The daily distribution of long acting and short acting insulin can be seen in the pie chart.
- 3 When there is a small dose of insulin (2 units or less) in close proximity to another dose, it can indicate an air shot.



5.4 COMPARISON DAY BY DAY OVERVIEW (PRINT TO PDF)

Create a PDF with a 14 day overview! All reports in diasend® can also easily and quickly be exported and printed in PDF by setting up the PDF Wizard. Please see page 23 for information on personalization/customization of PDF reports.

- 1** By clicking here you can create a day by day overview containing several weeks. This gives you the ability to compare data from one week to the next.

PDF Wizard

This wizard will help you to create a single PDF file with all reports of your choice. Select the reports you would like to include:

End date of time interval: Use same time span for all?

☒ Include only entered records

☒ Color ☐ Black and white

1 **2** **3**

Summary	Options
<input type="checkbox"/> Summary	Two weeks

Glucose	Options
<input type="checkbox"/> Logbook/table	Two weeks
<input type="checkbox"/> Standard day	Two weeks
<input type="checkbox"/> Trend	Two weeks
<input type="checkbox"/> Day by day	Two weeks
<input type="checkbox"/> Meter alarms	Two weeks
<input type="checkbox"/> Meter settings	

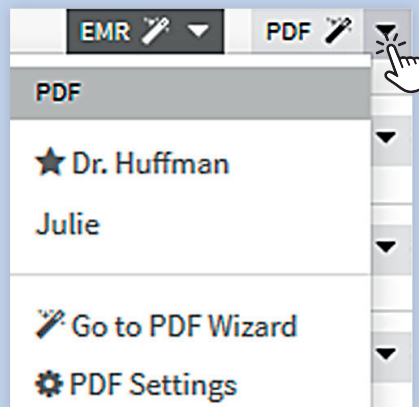
CGM	Options
<input type="checkbox"/> Standard day	Two weeks
<input type="checkbox"/> Trend	Two weeks
<input type="checkbox"/> Day by day	Two weeks
<input type="checkbox"/> Statistics	Two weeks

Insulin	Options
<input type="checkbox"/> Week	Two weeks
<input type="checkbox"/> Trend	Two weeks
<input type="checkbox"/> Day by day	Two weeks
<input type="checkbox"/> Bolus doses	Two weeks
<input type="checkbox"/> Bolus adherence	Two weeks
<input type="checkbox"/> Pump alarms	Two weeks
<input type="checkbox"/> Pump settings	
<input type="checkbox"/> Pump settings comparison	

Comparison	Options
<input type="checkbox"/> Logbook/table	Two weeks
<input type="checkbox"/> Day by day	Two weeks
<input type="checkbox"/> Day by day overview	Two weeks

Create Report

Cancel



SETTINGS ACCOUNT PROFILE LOG OUT

EMR/PDF Wizard Password Default target range

The EMR/PDF Wizard allows you to create Favorite Reports Profiles, which allow you to consolidate multiple reports into a single Adobe PDF file for record systems that are compatible with PDF files.

Favorite Reports Profiles

Name of Profile	Default	Action
	<input type="radio"/>	Edit Delete
Dr. Huffman	<input checked="" type="radio"/> ★	Edit Delete
Julie	<input type="radio"/>	Edit Delete

+ Add new Favorite Reports Profile

Action

When I click the EMR/PDF Wizard button, I would like diasend® to perform the following action:

- ☐ PDF ★ Instantly generate the **default** PDF profile that has been selected in the settings/pdf wizard tab
- ☒ PDF 🗨 Always **guide** me through the EMR/PDF Wizard.
- ☐ PDF Always let me **choose** among favorite profiles already set up or guide me through the EMR/PDF wizard.

5

6.1 PDF WIZARD

Allows customization and management of report preferences consolidated into one PDF file. This includes the ability to add favorite profiles per user.

- 1** Set the end date of the desired time interval.
- 2** The PDF Wizard allows you to choose which reports to include.
- 3** Set the time span.

- 4** In the patient list you can click on the PDF icon to create a compiled PDF report or click on the downward pointing arrow to select the pre-set profile you wish to view/print.

- 5** You can also find the PDF Wizard under Settings in your account. There you can also add new customized report profiles.

Contact us:
Email: diasend@glooko.com
Telephone: +46 31 762 08 88
Online helpcenter: <https://support.diasend.com>

glooko®
BETTER TOGETHER