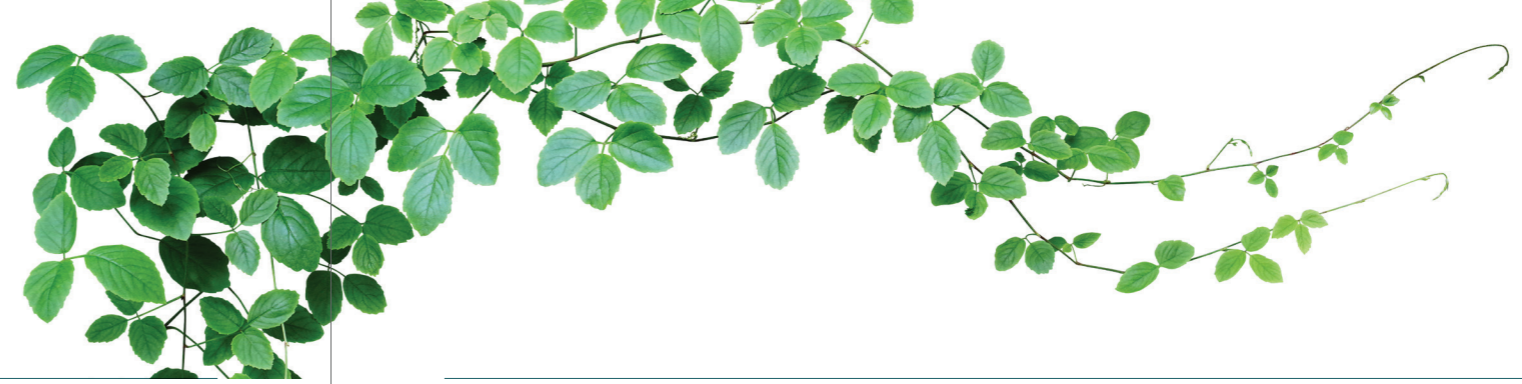


THE  
Wahlberg

— Landmark in Atholl —

## PLUS RANGE OPTIONAL EXTRAS AND UPGRADES

	Type A / B	Type C	Type D	Type E
<b>MIELE KITCHEN APPLIANCES</b>				
Miele integrated fridge (Additional)	R 27 215	R 27 215	R 27 215	R 27 215
Miele washing machine	R 18 560	R 18 560	R 18 560	R 18 560
Miele tumble dryer	R 20 587	R 20 587	R 20 587	R 20 587
Miele microwave	R 20 129	R 20 129	R 20 129	R 20 129
Miele 90cm under-counter oven (Upgrade)	R 43 569	R 43 569	R 43 569	R 43 569
<b>OR</b>				
Miele 90cm under-counter oven (Additional)	R 53 170	R 53 170	R 53 170	R 53 170
Miele 90cm stainless steel gas hob (Upgrade)	R 3 710	R 3 710	R 3 710	R 3 710
<b>OR</b>				
Miele 90cm Ceran Gas Hob (Upgrade)	R 15 253	R 15 253	R 15 253	R 15 253
Miele warmer drawer	R 17 489	R 17 489	R 17 489	R 17 489
Miele integrated coffee machine	R 47 295	R 47 295	R 47 295	R 47 295
Miele island extractor and accessories PUR98D	R 28 883	R 28 883	R 28 883	R 28 883
<b>OR</b>				
Miele island extractor and accessories DA6708D	R 55 029	R 55 029	R 55 029	R 55 029



	Type A / B	Type C	Type D	Type E
<b>MEIR SANITARYWARE – BLACK</b>				
Sanitaryware set Kitchen mixer, basin mixer, bath spout, diverter mixer, wall mixer, shower head, toilet roll holder, robe hook, pop-up waste, actuator plate, bottle trap	R 32 570	R 38 619	R 38 619	R 44 667
Bath and basins	R 8 500	R 9 912	R 9 912	R 11 324
Freestanding bath mixer	R 19 431	R 19 431	R 19 431	R 19 431
Scullery sink	R 4 893	R 4 893	R 4 893	R 4 893
Prep bowl	R 4 599	R 4 599	R 4 599	R 4 599
Heated towel rail	R 7 551	R 7 551	R 7 551	R 7 551
<b>MEIR SANITARYWARE – CHAMPAGNE</b>				
Sanitaryware set Kitchen mixer, basin mixer, bath spout, diverter mixer, wall mixer, shower head, toilet roll holder, robe hook, pop-up waste, actuator plate, bottle trap	R 84 962	R 104 567	R 104 567	R 122 185
Freestanding bath mixer	R 27 412	R 27 412	R 27 412	R 27 412
Scullery sink	R 6 438	R 6 438	R 6 438	R 6 438
Prep bowl	R 4 877	R 4 877	R 4 877	R 4 877
<b>MEIR SANITARYWARE – NICKEL</b>				
Sanitaryware set Kitchen mixer, basin mixer, bath spout, diverter mixer, wall mixer, shower head, toilet roll holder, robe hook, pop-up waste, actuator plate, bottle trap	R 53 999	R 63 698	R 63 698	R 73 397
Freestanding bath mixer	R 24 659	R 24 659	R 24 659	R 24 659
Scullery sink	R 6 438	R 6 438	R 6 438	R 6 438
Prep bowl	R 4 877	R 4 877	R 4 877	R 4 877
<b>MEIR SANITARYWARE – CHROME</b>				
Freestanding bath mixer	R 16 318	R 16 318	R 16 318	R 16 318
Heated towel rail	R 7 551	R 7 551	R 7 551	R 7 551

	Type A / B	Type C	Type D	Type E
<b>SANITARYWARE – OTHER</b>				
Toilet hand shower	R 3 038	R 3 038	R 3 038	R 3 038
Auto spray toilet (per bathroom)	R 34 833	R 34 833	R 34 833	R 34 833
<b>LIGHTING</b>				
Double-volume woven ball pendants (x3)	R 20 102	R 20 102	R 20 102	R 20 102
<b>OR</b>				
Double-volume David Trubridge floral pendants (x3)	R 59 265	R 59 265	R 59 265	R 59 265
Mirror LED lighting for bathrooms 2–4	R 8 328	R 12 492	R 12 492	R 12 492
<b>KITCHEN CUPBOARDS</b>				
Pull-out larder	R 11 841	R 11 841	R 11 841	R 11 841
Rubber mat: – Cutlery drawers only – All drawers (type A, B, C, D) – Entire kitchen (type A, B, C)	R 861 R 3 444 R 6 099	R 861 R 3 444 R 6 099	R 861 R 3 444 R 6 099	R 861 R 3 444 R 7 014
Cutlery inserts (per 900mm)	R 3 850	R 3 850	R 3 850	R 3 850
Plate tray (per plate holder)	R 888	R 888	R 888	R 888
<b>BUILT-IN CUPBOARDS</b>				
Laundry basket (per bedroom)	R 3 877	R 3 877	R 3 877	R 3 877
Pull-out trouser rack (per bedroom)	R 2 780	R 2 780	R 2 780	R 2 780
Pull-out shoe rack (per bedroom)	R 2 846	R 2 846	R 2 846	R 2 846
Pull-out organiser (per bedroom)	R 3 621	R 3 621	R 3 621	R 3 621
<b>UNDERFLOOR HEATING INCLUDING DIGITAL THERMOSTAT</b>				
Main bathroom	R 9 198	R 9 198	R 9 198	R 10 577
Bathroom 2 and 3 (per bathroom)	R 8 081	R 8 081	R 8 081	R 9 293
Bathroom 4/guest bathroom	–	R 7 612	R 7 612	R 8 754
<b>ALARM SYSTEM</b>				
Paradox Evo 192 alarm system With 9x wireless PIR detectors	R 36 363	R 36 363	R 36 363	R 36 363



Type A / B

Type C

Type D

Type E

	Type A / B	Type C	Type D	Type E
<b>HOME AUTOMATION</b>				
Control 4 Automation lighting system	R 169 016	R 169 016	R 253 556	R 324 856
WiFi network router with two access points	R 23 348	R 23 348	R 23 348	R 23 348
Alarm system integration	R 13 461	R 13 461	R 13 461	R 13 461
<b>AUDIO DISTRIBUTION</b>				
Multizone audio distribution (1–4 zones)	R 71 739	R 71 739	R 71 739	R 71 739
<b>OR</b>				
Multizone audio distribution (5–8 zones)	R 90 959	R 90 959	R 90 959	R 90 959
2 x Fyne Audio 8" ceiling speakers (per zone)	R 11 900	R 11 900	R 11 900	R 11 900
<b>AIRCONDITIONING</b>				
LG central-ducted system – 60,000 BTU Five independently controlled zones (Cost of bulkheads subject to final working drawings)	R225 707	R225 707	R 241 707	R 278 213
<b>OR</b>				
LG inverter units – 12,000 BTU (per room)	R25 098	R25 098	R25 098	R25 098
<b>SWIMMING POOL</b>				
Marbellite pool	R 155 872	R 168 065	R 168 065	R 211 420
Timber decking at pool area	R 34 551	R 48 507	R 41 676	R 50 829
<b>FIREPLACE AND BRAAI</b>				
Drop-in 1400mm fireplace	R 23 505	R 23 505	–	R 23 505
Double-sided Canto 3 1200mm fireplace	–	–	R 26 810	–
Flat top four-burner gas braai	R 4 763	R 4 763	R 4 763	R 4 763
<b>INVERTER BATTERY BACK-UP AND SOLAR PANELS</b>				
5kVA battery back-up	R 63 635	R 63 635	R 63 635	R 63 635
5kVA solar panel system	R 207 588	R 207 588	R 207 588	R 207 588
10kVA solar panel system	R 357 014	R 357 014	R 357 014	R 357 014