

BUILDINGDOCTORTM

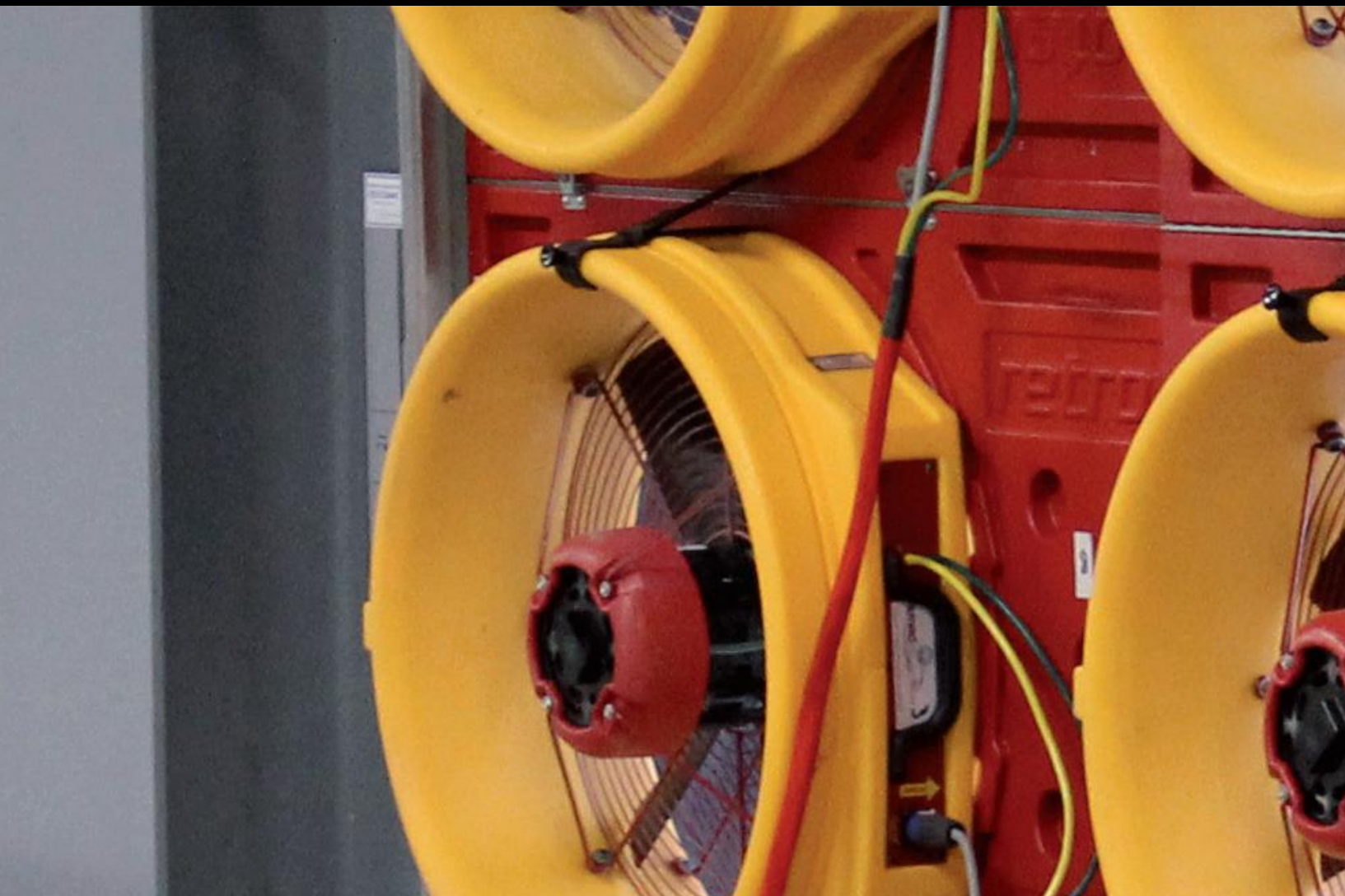


Enclosure integrity testing

For NFPA, ISO,
EN, FIA, VdS
Standards



airflow systems since 1980 www.retrotec.com



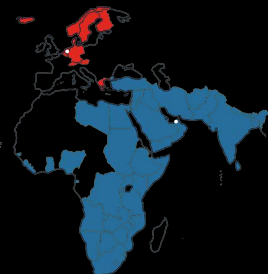
services

training

sales

BuildingDoctorTM

PHONE: +31 (0) 522 282 941
EMAIL: info@buildingdoctor.eu
WEBSITE: www.buildingdoctor.eu
ADDRESS: Hardermaat 12,
7244 PZ, Barchem,
Netherlands



BuildingDoctor DMCC

PHONE: +971 (0) 455 17 140
WEBSITE: www.buildingdoctor.ae
EMAIL: Info@buildingdoctor.ae
PO BOX: PO Box 37016, Dubai, UAE
ADDRESS: Office 2807, JBC 1, Cluster G,
Jumeirah Lakes Towers,
Dubai, UAE

Official distributor for:



Retrotec airflow systems



Look Solutions fog machines



AP Solutions pressure vents

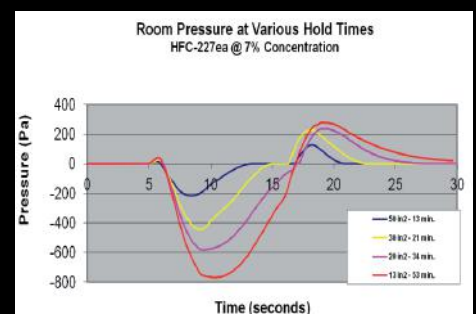


Improve safety and reduce installation costs.

All standards require a peak pressure analysis. Retrotec uniquely integrates hold time and peak pressure calculations in one package. The software and training walk you through the test.

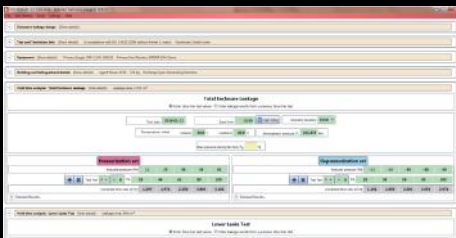
Having written the first Enclosure Integrity Procedure in 1985, Retrotec is recognized as the worldwide authority. Over 3000 clean agent installation companies use Retrotec equipment in over 60 countries. All standards require a door fan test and hold time analysis based on room leakage.

Only Retrotec specializes in the door fan equipment specifically designed for the enclosure integrity procedure. While the model 5100 is typical of a house testing fan, the 6000 models are the system of choice because they not only test enclosures that are double that of the 5101 but also test at high pressure.



Halocarbon systems typically are not installed with vents but often need them. Vents are often installed in the wrong direction.

Software predicts peak pressure and hold times

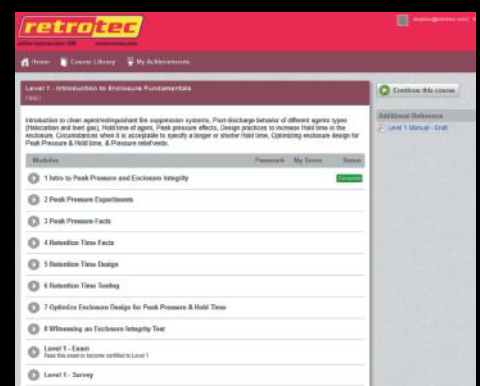


Retrotec FanTestic Integrity combines hold time and peak pressure analysis in one package and allows the user to test to ISO, EN, FIA and VdS Standards. It creates custom reports in Word that add value to your testing.

FREE download of a 60 day demo at:
<http://www.retrotec.com/software/integrity/publish.html>

Online training and certification

Access the new training at the time and place that is convenient for you. The narrated slides, videos, case studies, and step-by-step guides make learning the new procedure easy. Training is available for desktop and mobile devices alike, making learning on the go possible. It takes about 8 hours per level.





Retrotec Door Fan selector

Choose your system by determining the maximum enclosure volume you will need to test. Extra power will be useful to measure the actual free vent area with pressure relief vents (PRV) open.

EU6212F and EU6222F systems will measure lower leaks separately, which will allow enclosures to pass the hold time requirement that would not pass otherwise. This may also eliminate the need for PRV's.

Model	EU-301F	EU-5101F	EU-6112F	EU-6122F	EU-6212F	EU-6222F
Fans	1 x 140 W	1 x 620 W	1 x 1 240 W	1 x 1 240 W	2 x 1 240 W	2 x 1 240 W
Panels	1 cloth	1 cloth	1 large cloth	1 hard, 1 large cloth	2 large cloth	2 hard, 2 cloth
Door width	68 - 112cm	75 - 112cm	81 - 131cm	81 - 124cm	81 - 131cm	81 - 124cm
Door height	135 - 247cm	135 - 247cm	151 - 278cm	194 - 221cm	151 - 278cm	194 - 221cm
Maximum enclosure volume, Inerts	120 m ³	1 000 m ³	1 450 m ³	1 450 m ³	2 900 m ³	2 900 m ³
Maximum enclosure volume, Halocarbons	240 m ³	2 000 m ³	3 000 m ³	3 000 m ³	6 000 m ³	6 000 m ³
Measures lower leak	No	No	No	No	Yes	Yes
Option for Large frame	Optional	Optional	Included	Included	Included	Included
Add WiFi to gauge	Optional	Optional	Included	Included	Included	Included
Recommended for NFPA and ISO	No	No	Yes	Yes	Yes	Yes

Door Fan Systems

Model EU-301F



Model EU301F with cloth panel and DM32 digital gauge. Ideal for very small enclosures up to 120 m³ for inerts and 240 m³ for halocarbons. Will test the smallest of enclosures or cabinets. Everything packs into the two cases are shown in the picture.

240 Volt controls.

Model EU-5101F



Model EU5101F with cloth panel and DM32 will test most enclosures. This 0.75 hp system is ideal for medium size enclosures up to 1000 m³ for inerts and 2000 m³ for halocarbons.

240 Volt controls.

Model EU-6112F



Model EU6112F with large cloth panel will fit larger doorways. The powerful 1240 W fan will test PRVs at higher pressure. It includes the new DM32 WiFi gauge. This 1240 W system is Ideal for larger enclosures up to 1450 m³ for inerts and 3000 m³ for halocarbons.

240 Volt controls.



Model EU-6122F



Model EU6122F with hard panel and DM32 WiFi does the same job as the previous model EU3112F cloth panel but has the modular hard panels to increase operation efficiency. Includes fan case, tool case plus a large aluminum frame and cloth panel for tight enclosures.

240 Volt controls.

[\(Over 75% buy this system\)](#)

Model EU-6212F



Model EU6212F double fan with large aluminum frame and cloth panel and DM32 WiFi touchscreen wireless gauge. It is actually two complete EU6112F systems that can be used independently or combined with the Leakage Split kit for ceiling neutralization. Includes two 1240 W calibrated fans making it Ideal for large size enclosures up to 2 900 m³ for inerts and 6000 m³ for halocarbons. Includes fan cases and tool cases.

240 Volt controls.

Model EU-6222F



Model EU6222F double fan with hard panel and DM32 WiFi does the same job as the previous model EU6212F but has the modular panels to increase operation efficiency. This system is two complete EU6122F systems plus the leakage split kit with flex duct. Includes fan cases, tool cases, as well as a large aluminum frame and cloth panel for tight enclosures.

240 Volt controls.

[\(Over 80% of the major professional companies buy this system\)](#)



Gauges included in all systems

DM32 is included



With its touchscreen control and 5 year calibration, DM32 is the new benchmark of the industry. Allows tests to be witnessed remotely over the internet.

DM32 WiFi is optional



Go wireless with this top of the line gauge. Same amazing features as DM32, plus WiFi and free mobile apps for even more testing flexibility.

Included with EU6112F, EU6122F, EU6212F and EU6222F systems.

Software

3 year license with annual maintenance, updates & support is generally supplied with the equipment, and software can be purchased for older types of equipment as well to always stay up to date.

* At the end of a licensed period, a 'pop-up' will display "License expired, we may limit support." The software will continue to work, but the reporting feature will not function.

Calibration

Gauges and door fans are calibrated according to ISO-17025, EN-5002, ISO-14520, FIA and/or NFPA-2001. Accredited certificates are supplied; an industry first (some standards are upon specific request).



Certification, training & support

Certification can be obtained via online training or a classroom training session. Please send an email to info@buildingdoctor.ae for more information and the scheduled dates.

We also have a dedicated YouTube Channel which features videos and webinars for additional support and more advanced testing techniques.

<https://www.youtube.com/user/RetrotecEnergy>

Tune in to our monthly Webinars as well for additional tips and tricks!



Systems generally include:

Test Fan, DM32 gauge and door panel system. Fan covers, frame case, gauge cases, umbilical connectors, chargers and everything you will need to connect to a laptop are also included. Color Quick Guides step you through the test procedure so learning to use our touchscreen gauge is simply a matter of following the pictures. System accessory case holds every component of your system plus a wide variety of testing tools including computer, camera, sealing materials and a special exterior pocket for corrosive smoke testers.

All 5000F and 6000F systems include optional Ranges 74, 47 and 29 to test the smallest enclosures.



Benefits of a two fan system

Test pressure relief vents with the additional flow to ensure they will open and/or have sufficient venting along the entire vent path. Vents often fail to perform as claimed and MUST be tested to reduce your liability.

Hold Time calculations must assume a 50/50 leakage distribution which often requires extensive air sealing and because of the tight enclosure will also require PRVs. The ceiling neutralization kit shown may increase hold times by 300% and eliminate the PRV. Performing the same test by covering the ceiling with plastic is very time consuming and often does not shorten the hold time result.

You also get two complete systems that can be used separately to test in two locations at once. You have a backup when one is being calibrated.

Eliminate the time consuming need to cover ceilings in plastic to pass typical enclosures with more leaks above than below the ceiling. Retrotec's new double fan system come with gauges that will automatically set the pressure across the ceiling to zero, allowing one tech to perform a test that used to require two.



Pressure Relief Vents, PRVs

Buildingdoctor has a complete line of PRVs for both inert agents that open in one direction and halocarbon PRVs that open in both directions. Fan-Testic Integrity selects the correct PRV and provides a field test to ensure it opens properly.



Smoke generators

High quality smoke generators are used to perform repeat smoke testing, such as to identify leakages in enclosures as well as to perform smoke simulations of smoke extract units or smoke simulations for training purposes.



BUILDINGDOCTOR™

Enclosure integrity testing



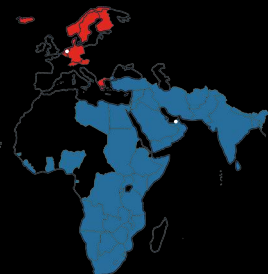
services

training

sales

BuildingDoctor™

PHONE: +31 (0) 522 282 941
EMAIL: info@buildingdoctor.eu
WEBSITE: www.buildingdoctor.eu
ADDRESS: Hardermaat 12,
7244 PZ, Barchem,
Netherlands



BuildingDoctor DMCC

PHONE: +971 (0) 455 17 140
WEBSITE: www.buildingdoctor.ae
EMAIL: Info@buildingdoctor.ae
PO BOX: PO Box 37016, Dubai, UAE
ADDRESS: Office 2807, JBC 1, Cluster G,
Jumeirah Lakes Towers,
Dubai, UAE

Official distributor for:



Retrotec airflow systems



Look Solutions fog machines



AP Solutions pressure vents