

Activity: Colour matching

Kit needed: Printed colour sheet (or make your own), double-sided tape

Group/ family size: 2+

Age Group: 2+

Time: 10 minutes +

Location: Garden or local green space

Learning about: Colours in nature, matching, natural materials, observation skills, concentration

Instructions:

Print off the colour matching sheet (or make your own). Attach a piece of double-sided tape to run next to the colours – leave the covering strip on the tape until you get to the place you're doing the activity.

Ask your child to find something from nature that matches the colour on the sheet and attach it to the double-sided tape next to that colour. For older children, ask them to find the exact match to the shade on the sheet. Younger children can be asked to look for the general colour, e.g. something red, green, etc.

Ask your child to collect responsibly, without pulling up or damaging plants or wildlife.

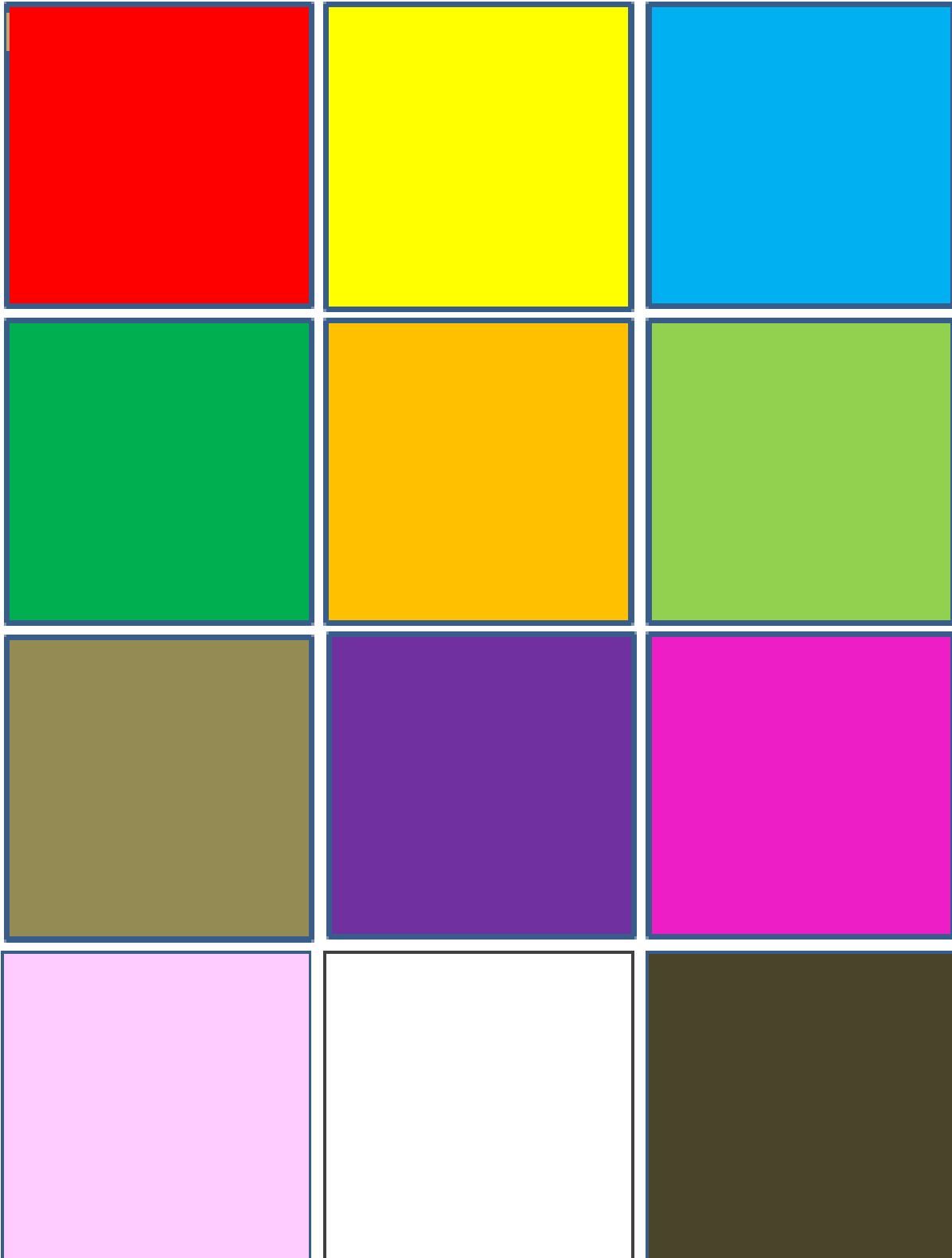
Some colours will be more difficult to find than others and colours you will change in different seasons.

Additional comments:

When you are looking for materials please avoid private property/ land unless you have the landowner's permission.

Watch out for stinging insects, brambles and nettles, be careful not to disturb wildlife or destroy habitats.

**Medway Valley Countryside Partnership
Family Outdoor Education Pack**



**Medway Valley Countryside Partnership
Family Outdoor Education Pack**

