



Virtual Stick

Windows Mobile Devices

For use with

Farmplan Livestock Software

CONTENTS

Virtual Stick Reader.....	3
Overview	3
To install the Virtual Stick CAB file	4
Using the Virtual Stick	6
Home Page	6
Setup Groups	8
Sending Details back to the program.....	10
Appendix 1	10
Psion – Configure Side Buttons to Scan Tags	11
Appendix 2	12
Bluetooth	12
Appendix 3	13
To reset your Device	14

Virtual Stick Reader

Overview



The Farmplan **Virtual Stick** application can be used with the Farmplan Cattle, Sheep, and Livestock suite of programs as well as Flock Manager.

Window Mobile Devices (PDA) such as the Psion Workabout Pro 3 can be converted for use as if it was a Stick Reader so that it can be used to simply read electronic ear tag (EID) details. These can then be imported into the Farmplan livestock programs in a variety of entry options as if they had been read by a stick reader. This saves the expense of purchasing a dedicated stick reader as well as the Windows Mobile Device, which may already be in use with the Farmplan Animal Logger application. It also saves the inconvenience of having to take 2 different devices out onto the farm.

Animals can be allocated to groups within a particular session – for example when splitting animals into different batches, treating them with different drugs, or identifying different PD/scan results. Each group/session can be imported independently.

It will work with a range of Windows Mobile 5 – 6.5 and Windows CE 5.0 devices providing they have the option to read EID tags. Please contact Farmplan for more details of the models currently supported.

For full details of importing stick readings into the Farmplan programs, please refer to the program's built in **Help** options within the specific entry screens.

Getting Started

- A file called **Virtualstickversion.CAB** is needed in order to use this application on a Windows Device e.g. Psion Teklogix. It is supplied by Farmplan, normally on a CD.
- Activesync version 4.5 must be on your computer:
- **Vista/Windows 7/8/10** – There is normally no need to install Activesync as these operating systems already have it.

To install the Virtual Stick CAB file

On the Computer

- Attach the device to your computer and make sure that it has connected. When you open Computer (Windows Vista/7, 8, 10) you should be able to view the device listed under Portable Devices.



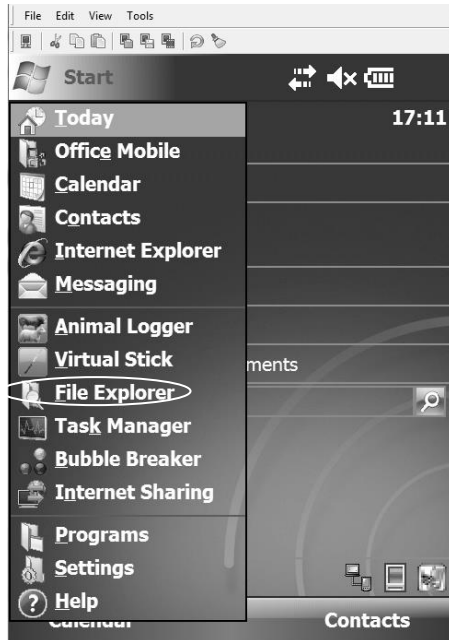
- If you have been supplied with a CD put it into your computer. Go to **My Computer/Computer** and find your CD drive. Double click on it to open it up so that you can see the file on the CD.

Alternatively the CAB file can be copied from the Support area of our Website – www.farmplan.co.uk


- Copy the **Virtualstickversion.CAB** file. (To copy a file use CTRL C or right click on the file and select the **Copy** option).
- From the **Computer** option you should paste this file into a folder on your computer. 'My Documents' will be fine but remember to take note of the location. (To paste the file onto your hard drive use CTRL V or right click and select **Paste**).
- Now re-copy the file, this time from your computer and, still using the **Computer** option, paste into a folder on your device. Again 'My Documents' is fine but take a note of it as you will need it when you go to the device.

On the device

- From the device go to **File Explorer** (from the Start button or via Programs).



- Locate the **Virtual Stick** file that you have just saved.

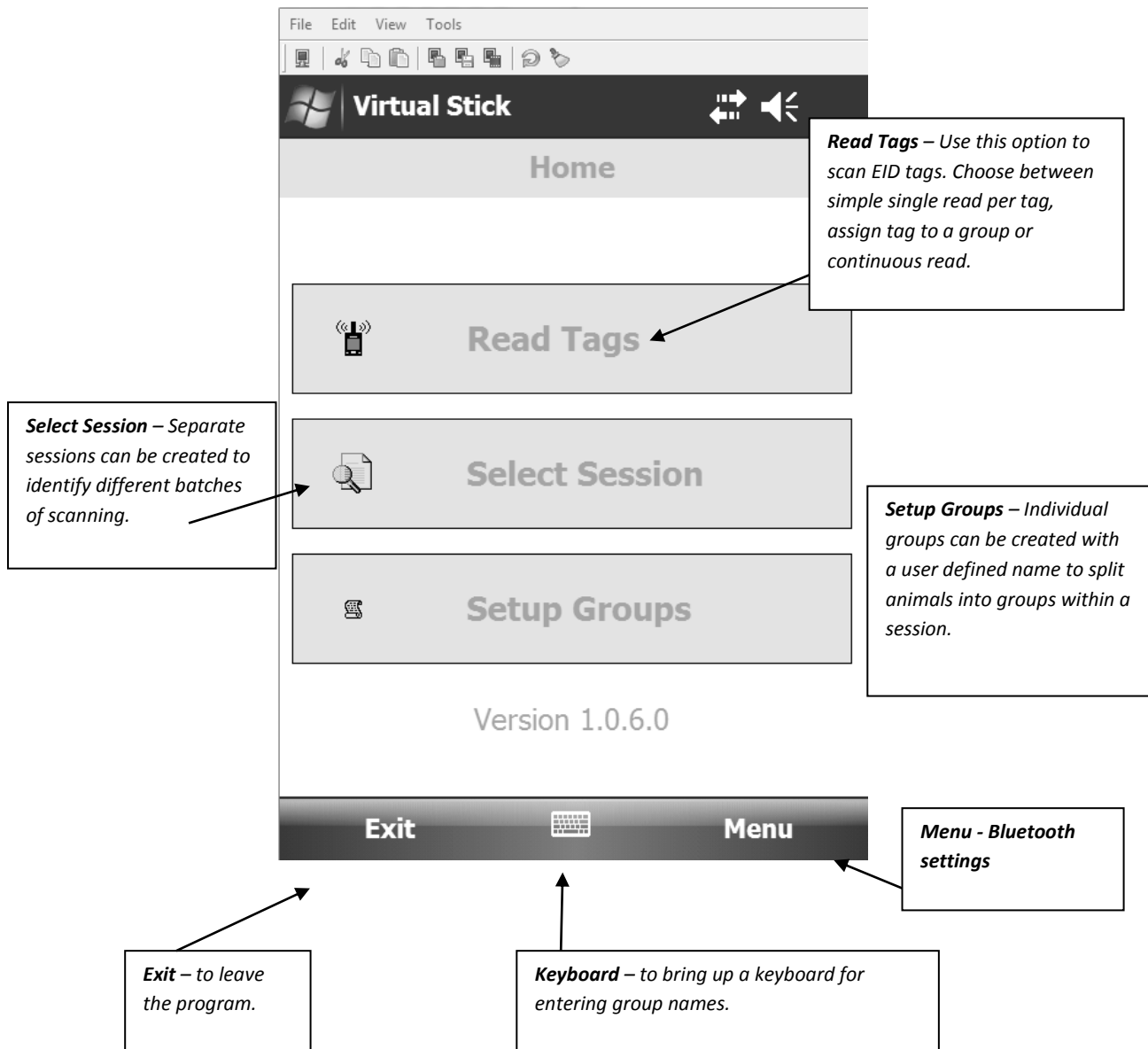
virtual stick cab ▼	Name ▼
 VirtualStick_1_...	04/10/12 636K

- Double click on Virtual Stick file and follow the on screen instructions to allow the Animal Logger to be installed onto the Device.
- After the Virtual Stick has been successfully installed, take the option **Programs** from the **Start** button to run it. After it has been run once an icon will appear in the Start Menu as above.

Using the Virtual Stick

Take the option to run the Farmplan Virtual Stick from either the Start menu or from Programs.

Home Page



Read Tags



To change the Scan Mode, select this option at the bottom of the screen. Choose between:

- **Single Read** - to scan each tag individually using the 'Scan Tag' button. The Virtual Stick will automatically assign all readings to the current session.
- **Assign to a Group** - when a tag is scanned, you will be given the opportunity to assign it to a group within the current session. You can mark a particular group as the default from within this option as well as from the **Setup Groups** option.
- **Continuous Read** - this option will allow you to start scanning continuously against a number of tags. Click on 'Scan Tag' to start scanning and 'Stop Reading' to finish.

Select Session

Virtual Stick [Speaker Icon]

Select Session

	Name	Created	Tags
	Session 1	30/10/12 10:41:10	1
	Session 2	30/10/12 11:02:38	0
-->	Session 3	30/10/12 11:02:39	7

Highlight a session to make it the 'current' session that will be used when reading tags.

Make this the current session
Cancel

Use the 'Create New Session' button to make a new session with the date and time that it is created.

Create New Session

Close [Keyboard Icon] **Menu**

Create a new session
Set current session
Clear the selected session
Delete selected session
Delete ALL sessions

*Use the **Menu** option to control the sessions – take care when clearing or deleting sessions as they will no longer be available for import into the Farmplan program.*

NB sessions are automatically cleared when they have been read into the program.

Setup Groups

Individual Groups can be created and given a name - for example to identify different treatments, number of calves/lambs when scanning, condition scoring etc. Each group will be shown separately when importing the readings back into the program. As each tag is scanned, it can be assigned to a group, providing the option **Assign to Group** has been selected.

Group	Default	Favourite
treatment a	<input type="checkbox"/>	<input type="checkbox"/>
sheep	<input type="checkbox"/>	<input type="checkbox"/>
cattle	<input checked="" type="checkbox"/>	<input checked="" type="checkbox"/>

Either highlight a group or use the **Menu** option to edit or delete a group.

One group can be assigned as the **Default**.


Favourites will be presented at the top of the list when scanning tags.

Group name:

Default group

Favourite

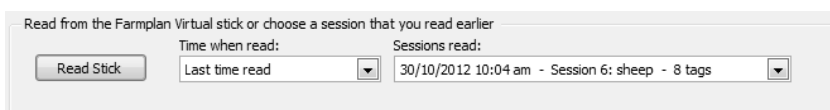
New Group

Close  **Menu**

Keyboard - click in the selection box and the keyboard will be displayed to allow you to type in the group name.

Sending Details back to the program

- Once you have finished reading tags, reconnect your device to the computer and allow it to connect.
- Ensure that you have closed the Virtual Stick application on the Device.
- Check that you have set **Tools-Options-Stick Readers** to the Farmplan Virtual Stick option.
- It can then be used in any options that allow the import of tag details using a stick reader such as sales/purchases (sheep only), movements, treatments etc. Go to **Select Animals** and click on the **Stick Reader** button.



- **Read Stick** to import all the current sessions into your program. Each session and/or group will be shown separately and you will be given the opportunity to pick the one that you want for this particular option and import it.

NB – Reading from the stick will clear ALL current sessions from the stick.

They are all saved automatically on your computer and will be available in all Farmplan livestock programs so if the stick has been read with say, Cattle Manager, you can still import sessions into Flock Manager.

For full details of how to read from the stick please refer to the **Help** options within each program.

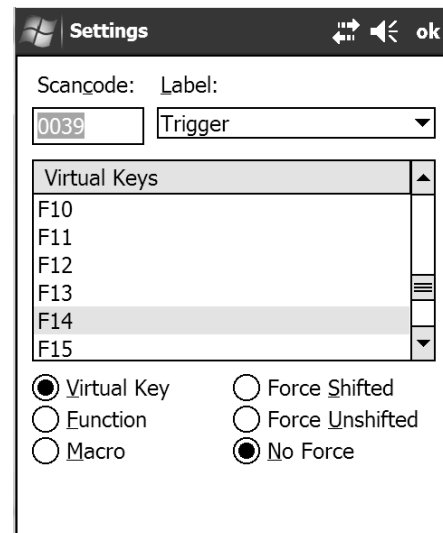
Appendix 1

Psion – Configure Side Buttons to Scan Tags

The Psion logger has 2 buttons on either side that can be configured to be used when scanning tags instead of having to click the option on the display labelled 'Scan Tags'.



- Click on the **Start** button and go to **Settings**
- From the **Personal** tab click on **Buttons**
- At the bottom of the screen arrow right until you see **Scancode Remapping**
- Add Scan code 0038
Label Trigger
Select F14 from the virtual keys
Select OK
- Add Scan code 0039
Label Trigger
Select F14 from the virtual keys
Select OK
- Select OK to Save.



Either button on the side of the Psion can now be pressed to read an electronic tag.

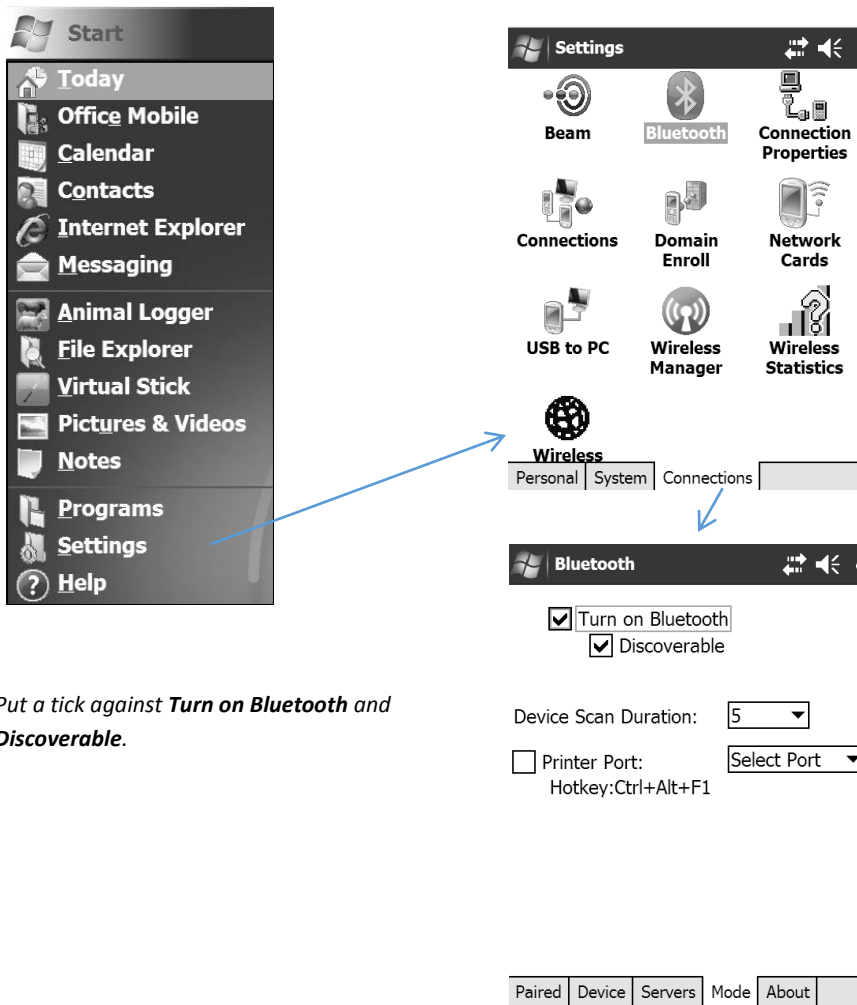
Appendix 2

Bluetooth

You may wish to read an electronic tag using the Virtual Stick and send the details to another device automatically – for example a weigh head or mini printer, using a bluetooth connection. It is, of course, important that both devices have bluetooth functionality.

- Turn on bluetooth on a bluetooth enabled Psion

Go to Settings/Connections/Bluetooth/Mode.



Put a tick against **Turn on Bluetooth** and **Discoverable**.

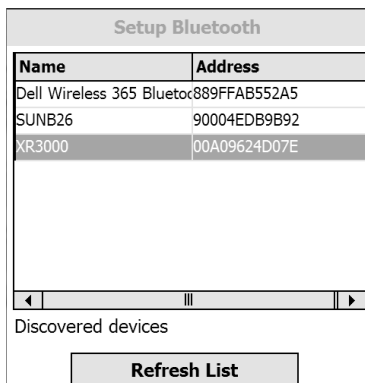
- **Configure Virtual Stick**

Within the Virtual Stick program select **Menu/Bluetooth Settings** from the Main Menu.



Make sure the receiving device has Bluetooth enabled. (For example on a Tru Test XR3000 weigh head go to Settings/Serial/Bluetooth.)

*Take the option **Select** to search for any Bluetooth devices in the vicinity and pick the appropriate one.*



Click on **Connect** to pair them together.

Tick **Auto Connect on Startup** if you wish the Animal Logger to look for and connect to the other device automatically each time you use the program.

Use the Virtual Stick as normal – each time you scan an electronic tag it will also be sent to the other device.

Appendix 3

To reset your Device

Occasionally you may need to reset your device – the equivalent of restarting your computer, for example if it appears to freeze.

- **iPAQ** Push in the small round reset button on the side

 - **Psion** Hold down the **FN** (blue button) and **ENTER** together.

 (You may find they have to be held down for several seconds before responds).
-



Farmplan Computer Systems
Alton House
Alton Road
Ross-on-Wye
Herefordshire
HR9 5BP

Phone: [01594 545011](tel:01594545011)

Fax: [01594 545012](tel:01594545012)

www.farmplan.co.uk

support@farmplan.co.uk

[Crops](#) | [Livestock](#) | [Business & Accounts](#) | [Training](#) | [IT Solutions](#) | [Support](#)