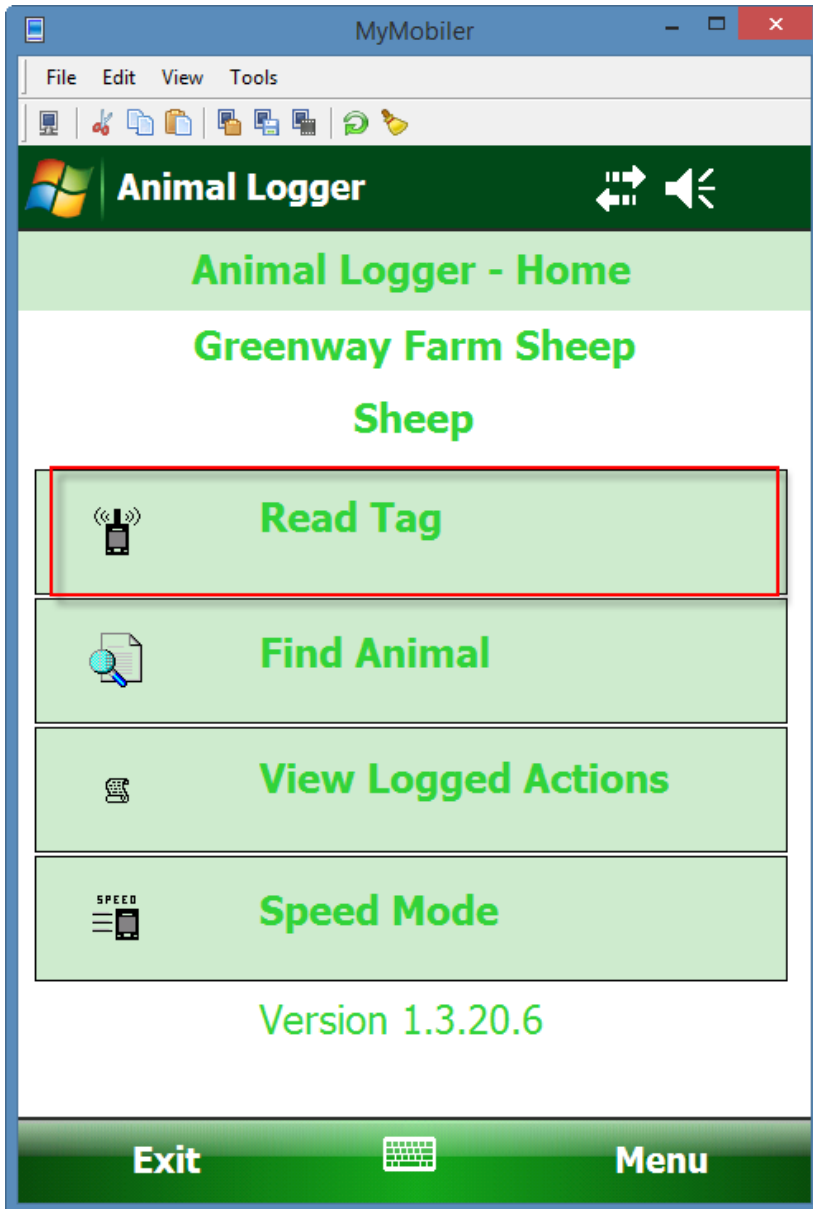


Retagging example using Animal Logger

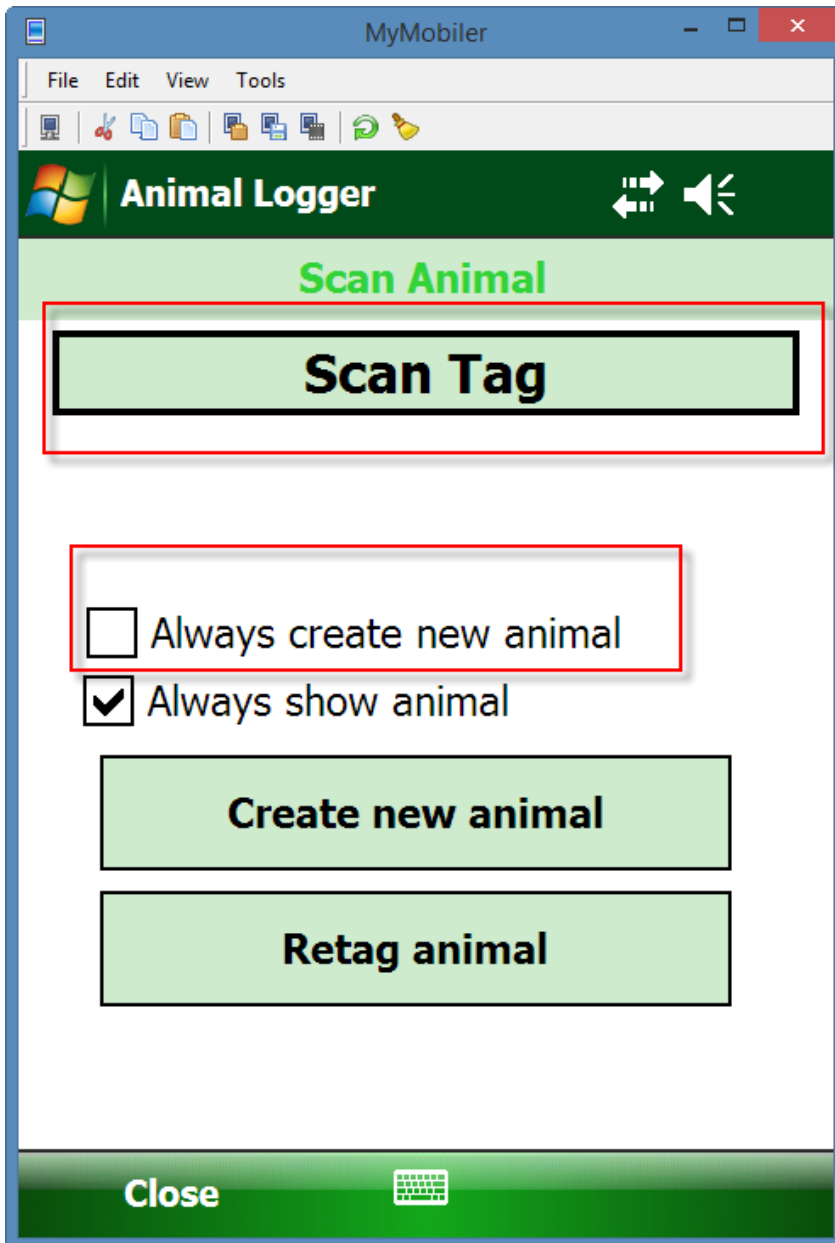
Retagging UK0 123456 01053 with UK0 244220 24006

Send animals to the Workabout Pro (Psion) from your Farmplan package

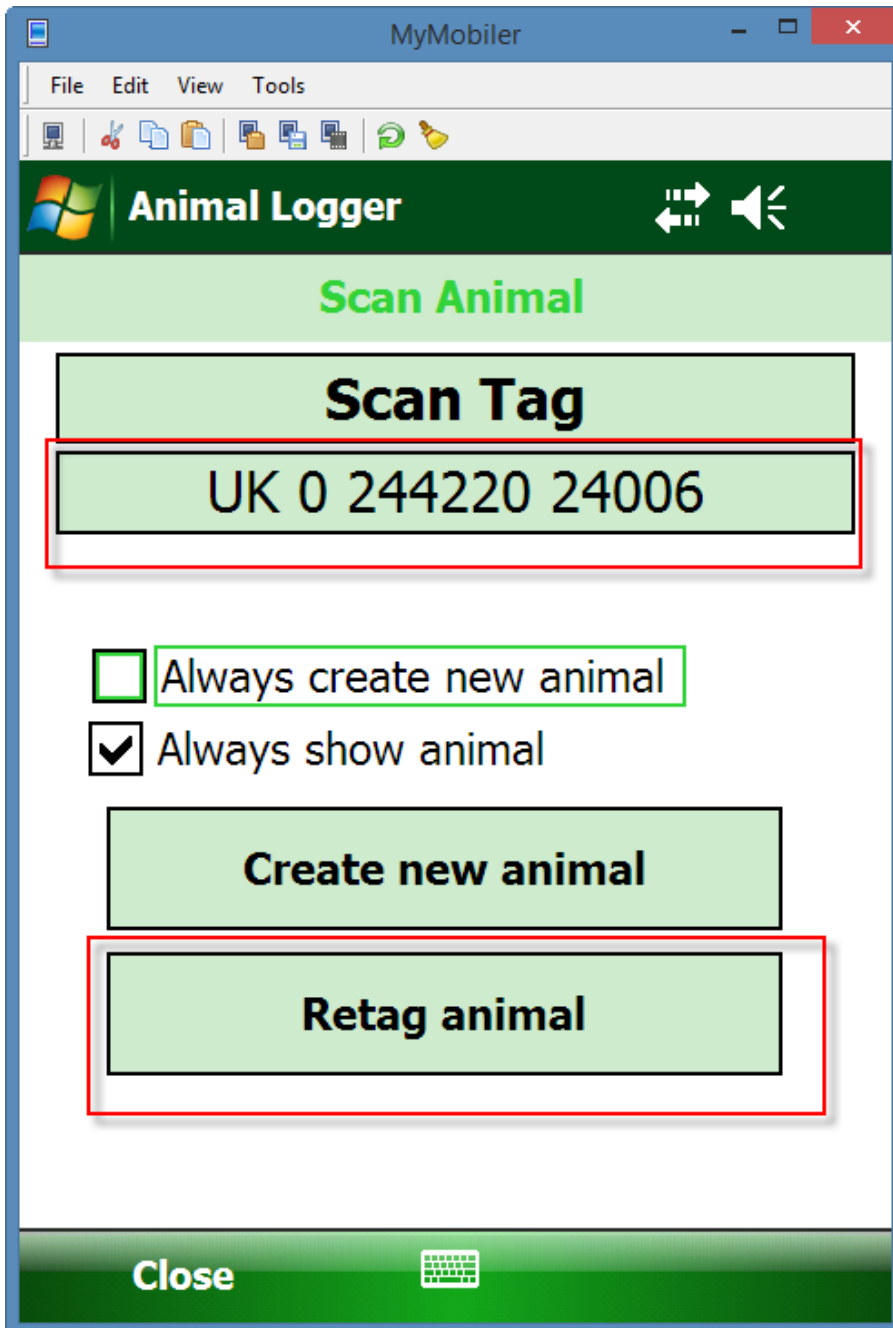
Click Read Tag



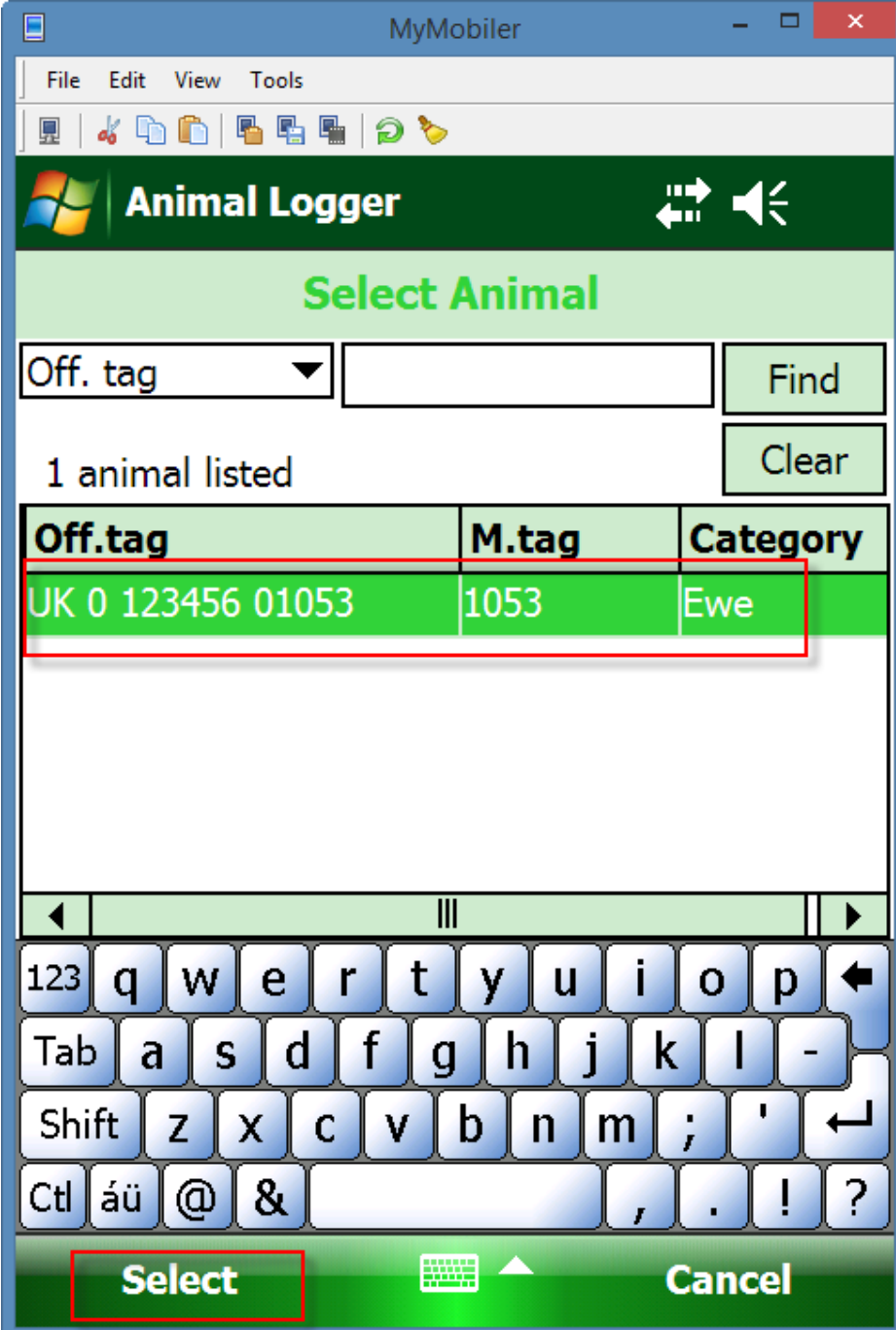
On the next page, untick Always create new animal and click Scan Tag



The new tag number will appear, click Retag Animal



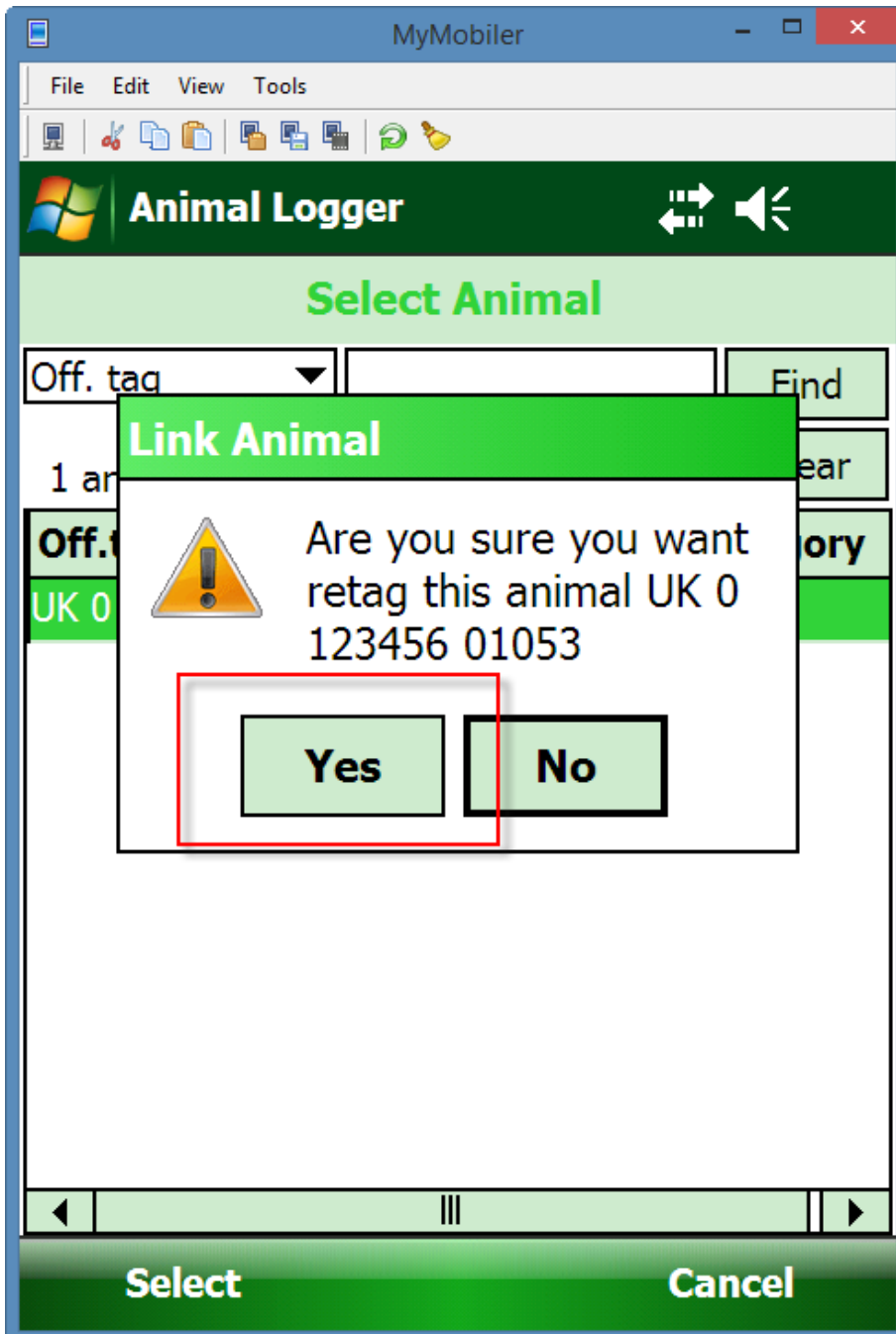
This next page brings up a search function, choose the animal in the list to replace the tag with the new one – be careful!



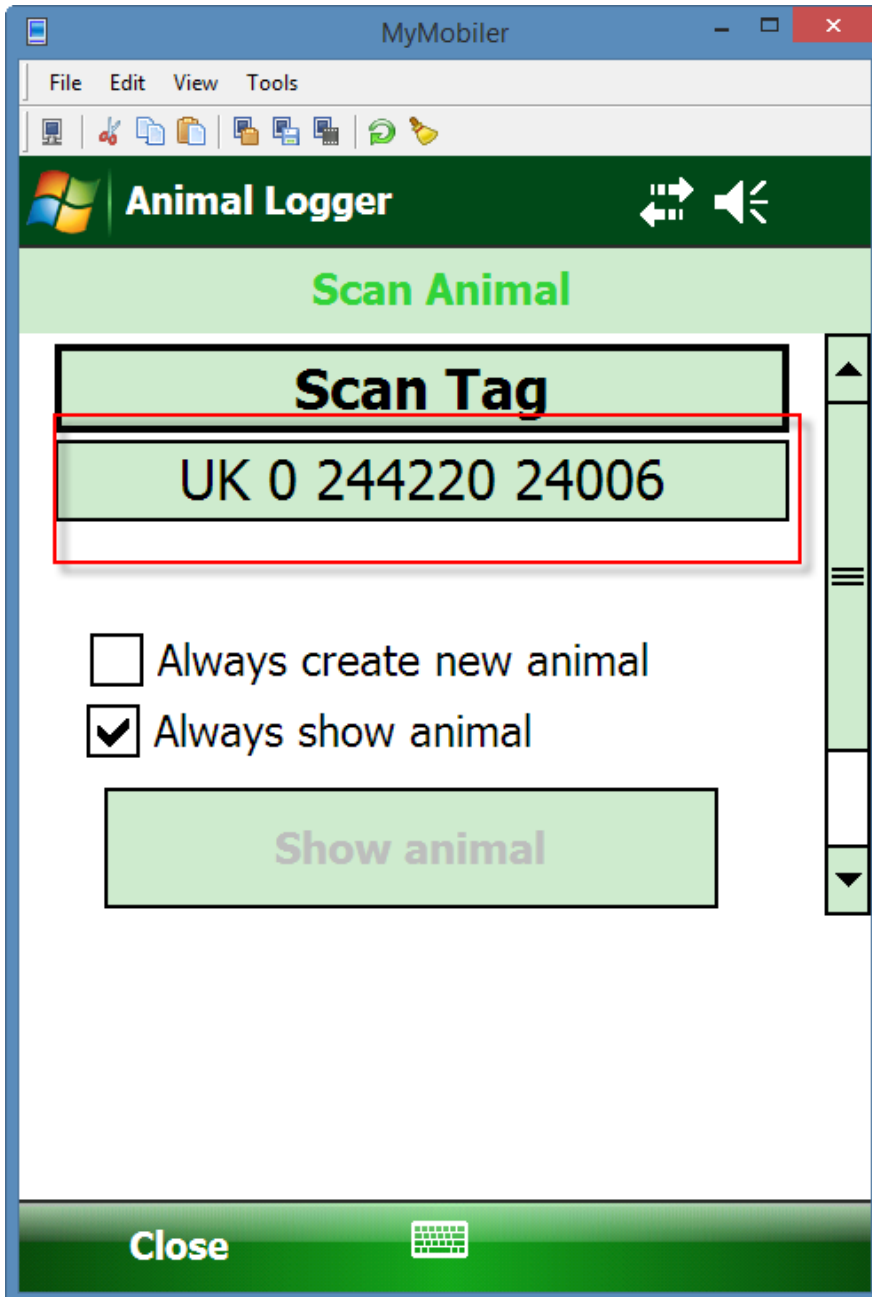
The screenshot shows the 'Animal Logger' application interface. At the top, there is a menu bar with 'File', 'Edit', 'View', and 'Tools'. Below the menu is a toolbar with various icons. The main title is 'Animal Logger' with navigation arrows. The section is titled 'Select Animal'. There is a dropdown menu labeled 'Off. tag' with a downward arrow, followed by an empty text input field and a 'Find' button. Below this is the text '1 animal listed' and a 'Clear' button. A table with three columns is displayed: 'Off.tag', 'M.tag', and 'Category'. The first row of the table is highlighted in green and contains the text 'UK 0 123456 01053', '1053', and 'Ewe'. A red box highlights the entire row. At the bottom of the screen, there is a virtual keyboard and a green bar with 'Select' and 'Cancel' buttons. The 'Select' button is highlighted with a red box.

Off.tag	M.tag	Category
UK 0 123456 01053	1053	Ewe

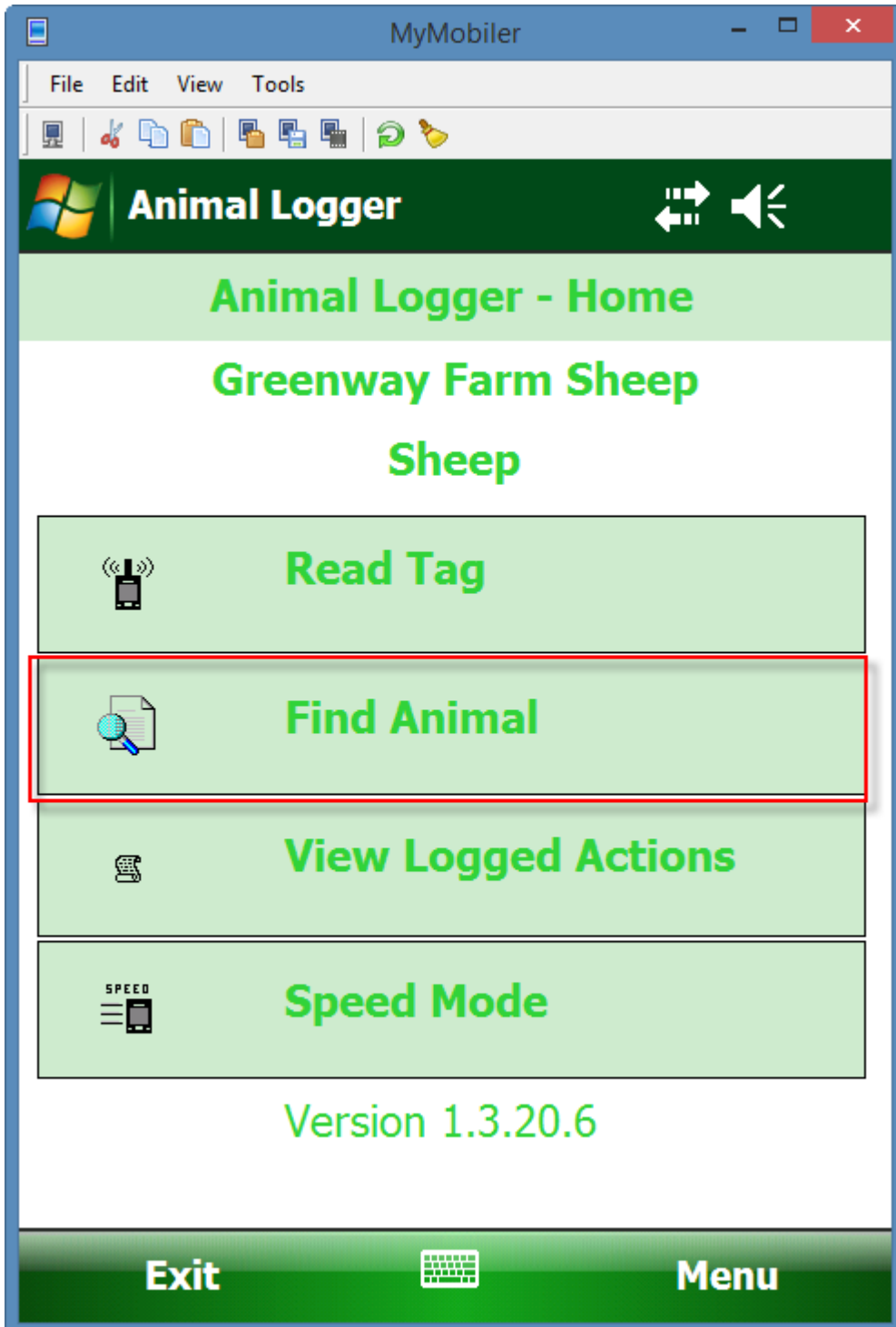
Agree to the message if you are sure you have the correct animal and are replacing the correct old tag



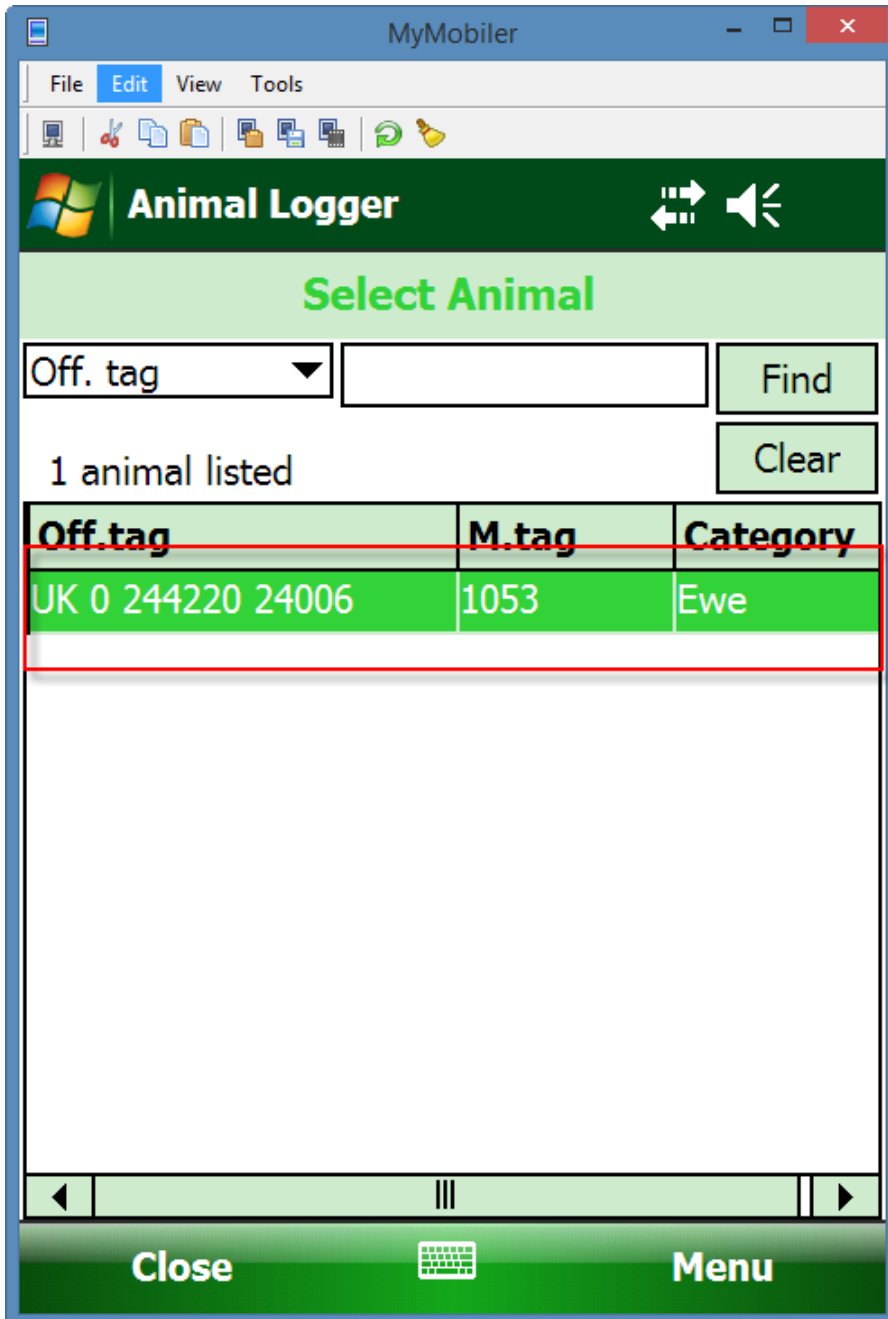
The new tag will now show, click Close



Now check the new tag is available in the Find Animal screen.

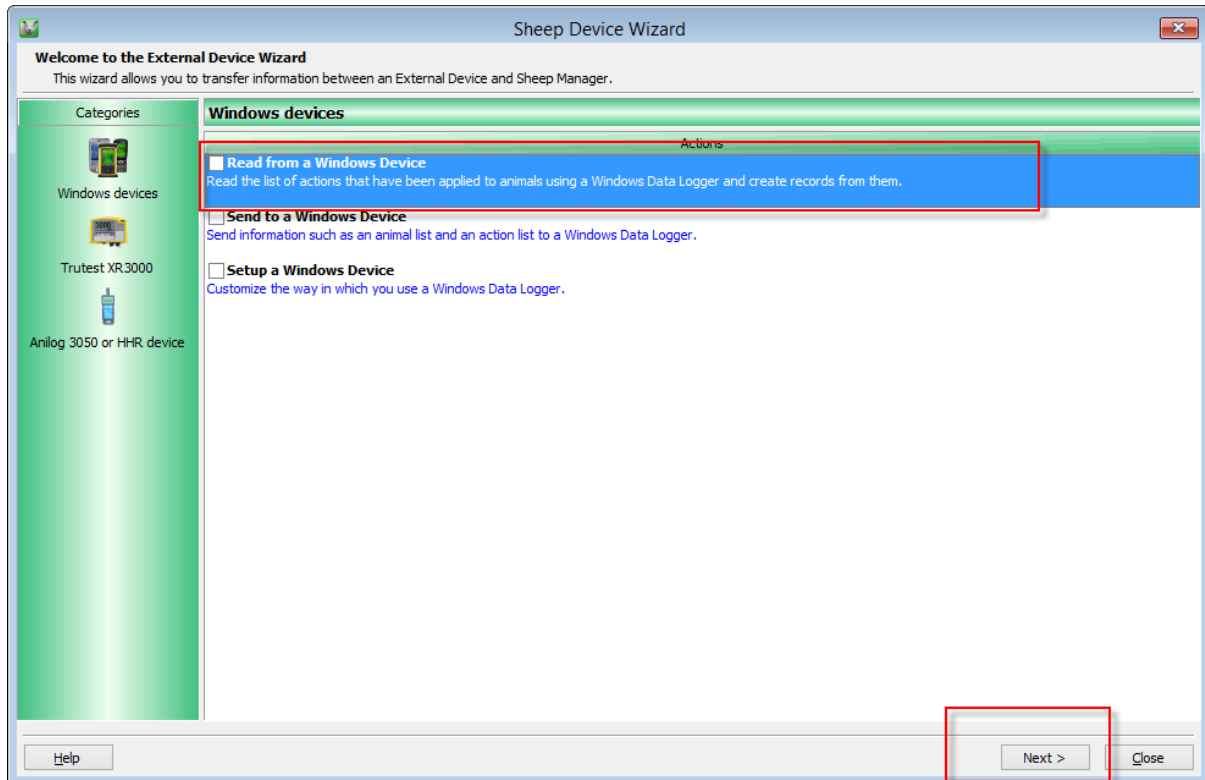


Here UK0 244220 24006 is now in our list and UK 0 123456 01056 is not.



Now to read back into the program

Choose Read from Windows Device > Next



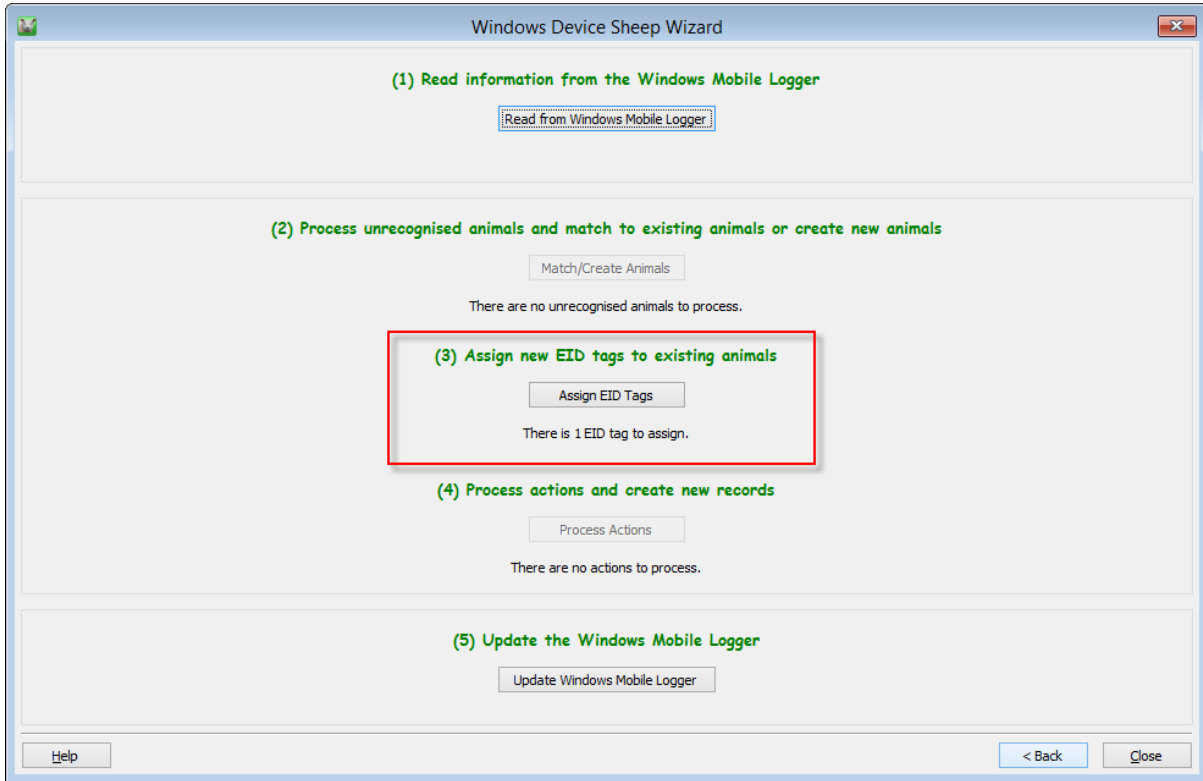
Read from Logger

(1) Read information from the Windows Mobile Logger

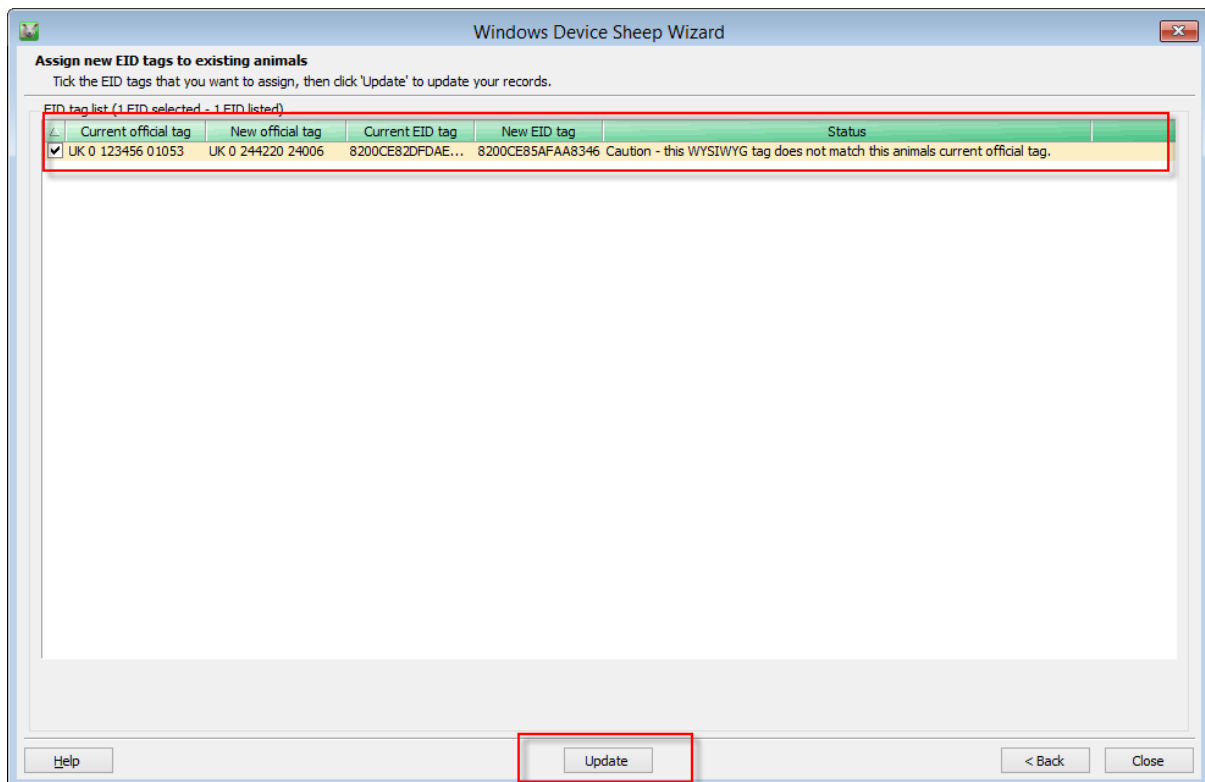
Read from Windows Mobile Logger



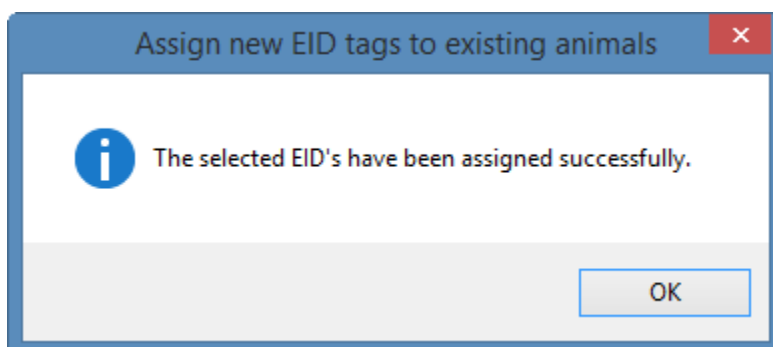
We can see here we have 1 tag has been reassigned:



The next screen warns you it does not match the existing number but as long as you are happy this is correct the press update



You will get a message to say it has been successful



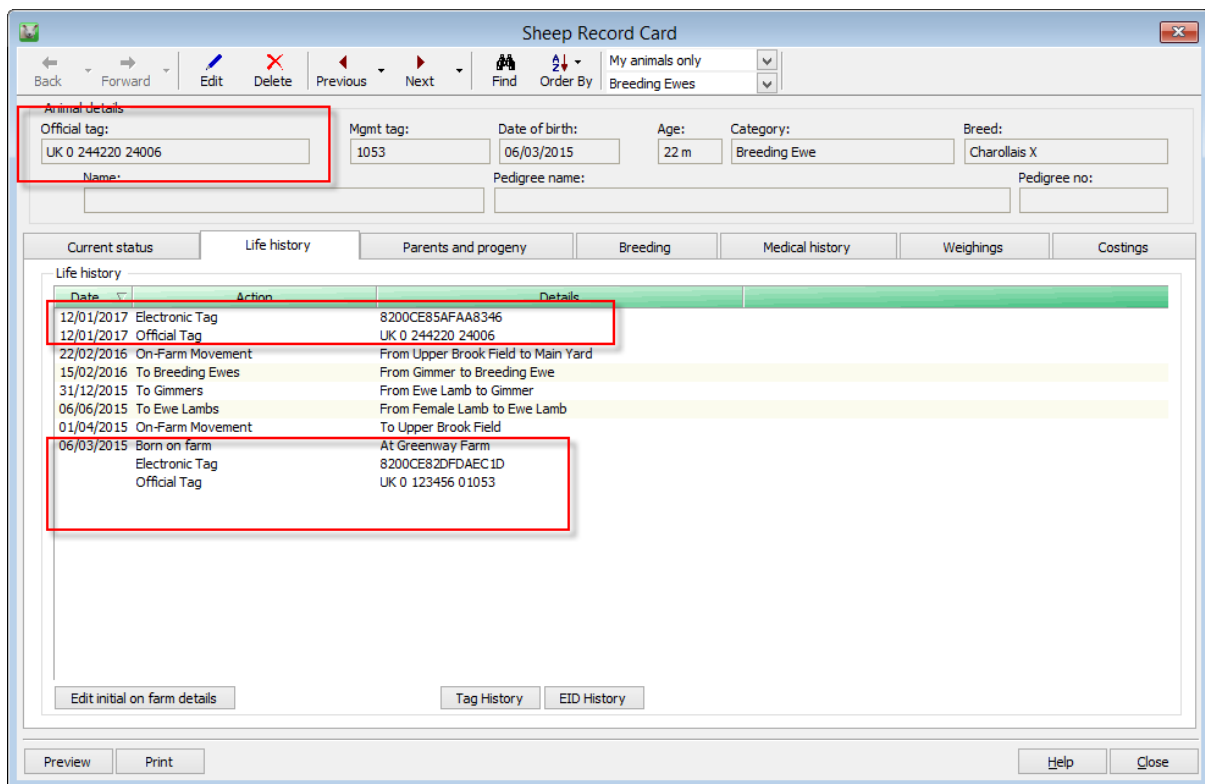
Assuming you are happy with everything you have imported ensure you update the logger with the new data once you are happy everything is correct



(5) Update the Windows Mobile Logger

Update Windows Mobile Logger

Now check the new tag record card and we can see the old tag listed and the new one now taking precedence and all history is saved and you do not have a duplicate record card.



The screenshot shows the 'Sheep Record Card' window. At the top, there are navigation buttons: Back, Forward, Edit, Delete, Previous, Next, Find, and Order By. Below these are dropdown menus for 'My animals only' (set to 'Breeding Ewes') and 'Breeding Ewes'. The 'Animal details' section includes fields for 'Official tag' (UK 0 244220 24006), 'Mgmt tag' (1053), 'Date of birth' (06/03/2015), 'Age' (22 m), 'Category' (Breeding Ewe), and 'Breed' (Charollais X). Below this is a 'Life history' tab with a table of events. Two rows in the table are highlighted with red boxes: one for '12/01/2017 Official Tag' and another for '06/03/2015 Born on farm'.

Date	Action	Details
12/01/2017	Electronic Tag	8200CE85FAA8346
12/01/2017	Official Tag	UK 0 244220 24006
22/02/2016	On-Farm Movement	From Upper Brook Field to Main Yard
15/02/2016	To Breeding Ewes	From Gimmer to Breeding Ewe
31/12/2015	To Gimmers	From Ewe Lamb to Gimmer
06/06/2015	To Ewe Lambs	From Female Lamb to Ewe Lamb
01/04/2015	On-Farm Movement	To Upper Brook Field
06/03/2015	Born on farm	At Greenway Farm
	Electronic Tag	8200CE82DFDAEC 1D
	Official Tag	UK 0 123456 01053