

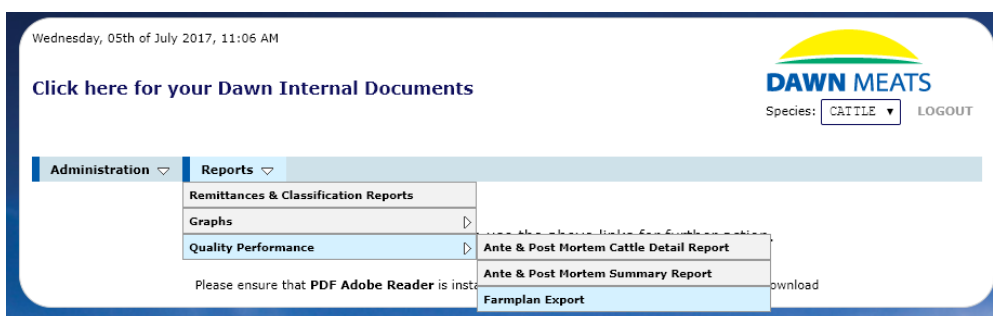


**Import Dawn Meats slaughter details (version 1.44)**

1. Log into the Farmer Portal: <https://farmerportal.dawnmeats.com>



2. Go to Reports > Quality Performance > Farmplan Export.



3. Set the date range in the respective fields then click CSV Export.

**Administration** ▾ **Reports** ▾

**FARMLAN EXPORT (CW122)**

**DATE RANGE**

Date From:   Date To:

**OTHER CRITERIA**

Site:

Agent:

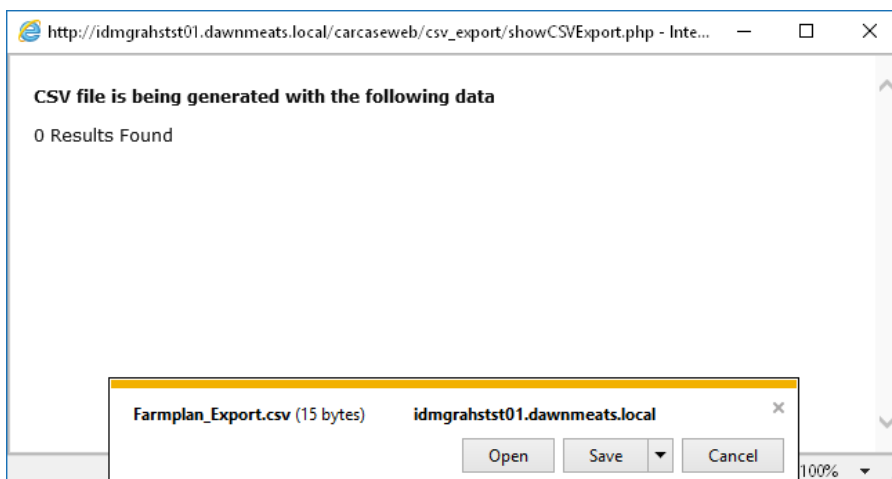
Producer:

Farm:

4. Depending on your browser, different things will now happen. Below shows you how to download the file for each browsing software.

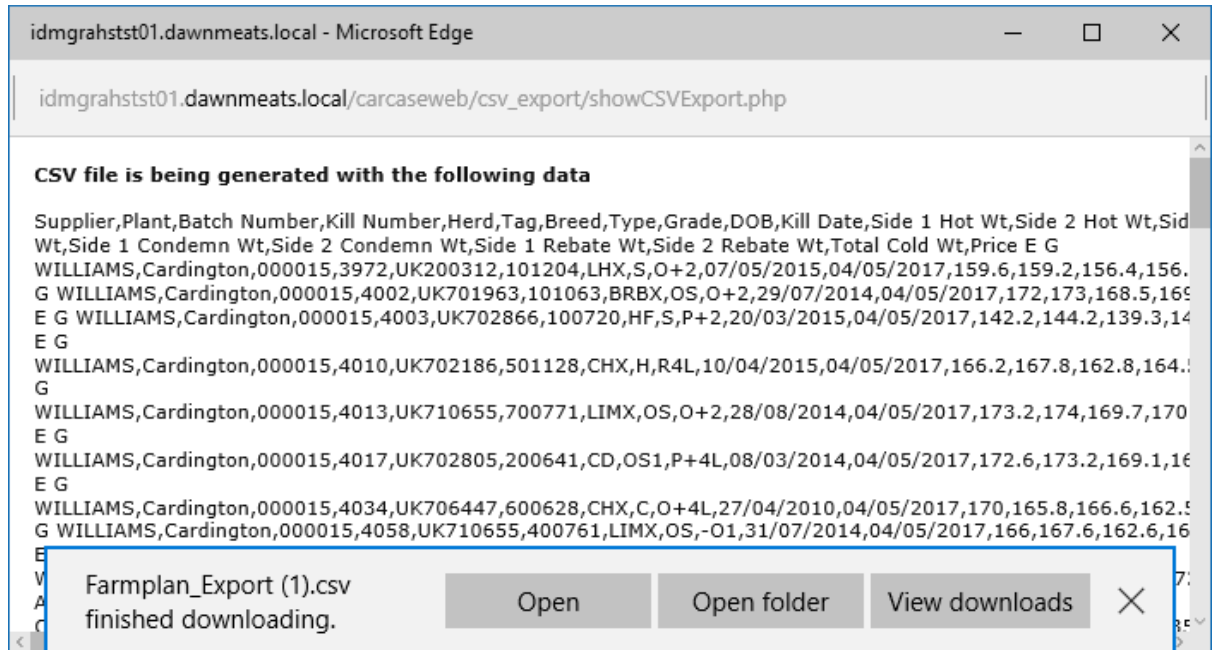
- **Internet Explorer**

Clicking CSV Export opens the below pop up window. Click Save. The file will now be in the Downloads folder.



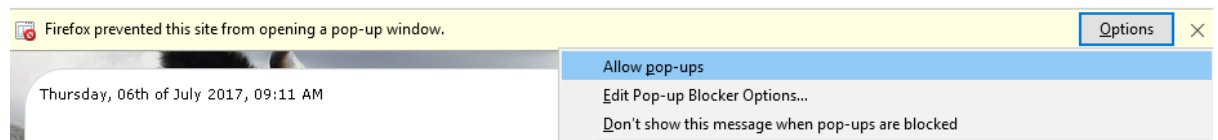
- **Microsoft Edge**

Your export should automatically be saved in your Downloads folder.

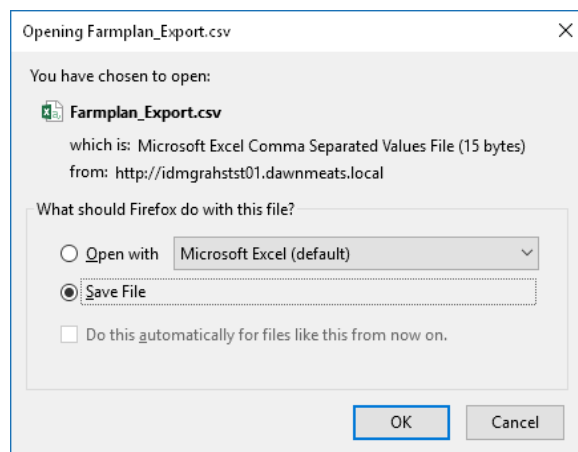


- **Mozilla Firefox**

Click on Options > Allow Pop-ups

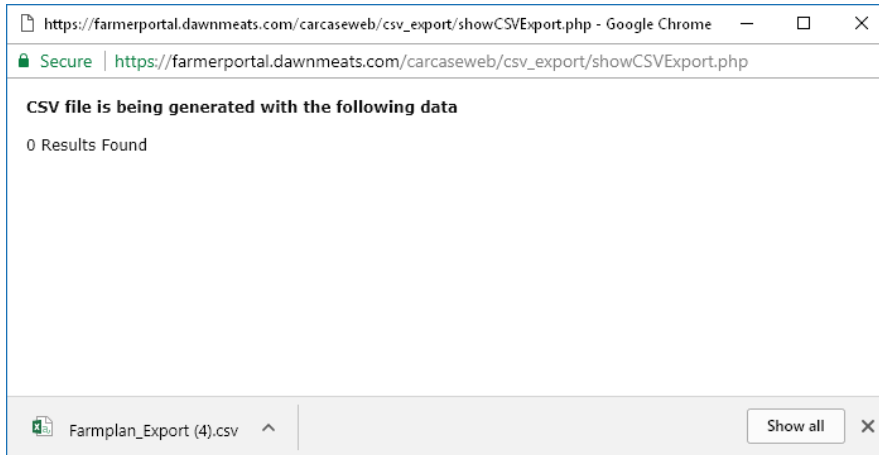


You will now get the popup asking if you wish to open or save the file. Click Save File. You can now find the file in your downloads folder.



- **Google Chrome**

Your export should automatically be saved in your Downloads folder.



5. Within the program the sale needs to have been entered with a tick against the '**sold for slaughter**' box and the '**MLC classification grid**' option selected.
6. Go to Import via **File > Import/Export wizard > Dawn Meats > next**
7. Browse to the file at the top of the screen and click on **Read**. This will populate any carcass classification grades and prices.