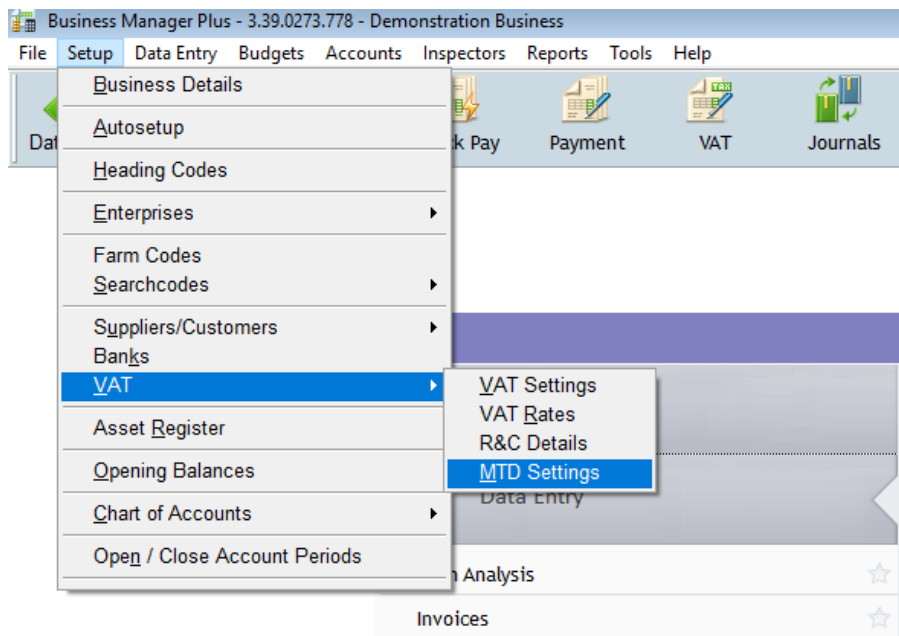


## Re-activate the connection for MTD VAT

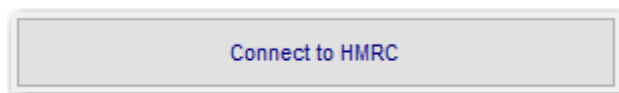
If you have moved to a new machine or done a Windows update, you will need to re-activate the MTD connection for VAT.

After completing the install and restoring your data you will need to make the following changes within the program.

### 1. Go to **Setup > VAT > MTD Settings**



### 2. Check the selected options are correct and click on the **Connect to HMRC** button.



You will then be taken through the HMRC connection process where you will be asked to enter your User ID and Password.



GOV.UK

HM Revenue & Customs

## Sign in

Enter your Government Gateway credentials to sign in. You received these when you created your HMRC online account.

User ID

Password

[Sign in](#)

At the end of this process you will need to **Grant authority** for Business Manager to interact with HMRC.

MTD Authentication

GOV.UK

HM Revenue & Customs 914598315310

### Authority to interact with HMRC on your behalf

The **Farmplan Business Manager** software application is requesting to do the following:

- View your VAT information
- Change your VAT information

It will be able to do the above for 18 months from when you grant authority.

[Grant authority](#) [Do not grant authority](#)

**Farmplan Business Manager** will act in accordance with their [privacy policy](#) and their [terms and conditions](#).

You can [remove this authority \(opens in a new tab\)](#) at any time.

[Close](#)

If successful you will receive the message **Authority Granted**. Close this window and you will return to Business Manager. You are now set up to make MTD VAT submissions. The VAT section on the Home Page will tell you the status of your next VAT submission.

**Current VAT information** [Close VAT](#)

VAT Period name: **December 2018**

VAT Period end date: **31/12/18**

Your VAT submission is due on 07/02/19