

Enchanted City

From city streets
to cosmic skies

Thursday 11th December – Sunday 14th December
Northumbria University's City Campus

EVENT
PROGRAMME

A family-friendly out-of-this-world after-dark adventure, featuring
space-inspired projection, light installations, fire, performance,
interactive workshops & more.

www.enchanted-city.co.uk

WELCOME

Enchanted City is a new annual Winter event, and for its inaugural year we're inviting you to join us on a cosmic voyage to discover the science behind the stars, the beauty of the constellations, and the thrill of space exploration.

Get ready to step into a brand-new after-dark adventure as Northumbria University's City Campus is transformed into a universe of light, art, performance and cosmic wonder. For four unforgettable nights across Thursday 11th December – Sunday 14th December, explore a world where creativity meets the stars.

As you wander, you'll encounter illuminated astronomers charting imaginary skies, sculptures twirling like satellites in orbit, and immersive installations celebrating the magic of the night stars. Once you've finished exploring, gather beneath the city stars to enjoy delicious food and festive drinks!

Powered by the creativity of regional, national, and international artists, Enchanted City will take everyone on a family-friendly journey to galaxies near and far.

Don't forget to look up — the universe is waiting for you!

#EnchantedCityNcl



HELPFUL INFO AHEAD OF YOUR VISIT:

Where is Enchanted City & the event entrance?

- Enchanted City is in Newcastle City Centre around Northumberland University City Centre Campus.
- The event entrance is at the junction of Northumberland Road and College Street, near to Newcastle City Hall's Stage Door.
- The entrance will be clearly signposted – look for branded Enchanted City signage.
- Click [HERE](#) to see the exact location on GoogleMaps.
- What Three Words: [Enable.Splice.Diner](#)

Is Enchanted City accessible?

We are committed to ensuring that visitors with disabilities and additional needs are not prevented from enjoying Enchanted City because of access needs. As this is our pilot year, we are especially keen to hear from visitors about their experience and accessibility recommendations, so that we can learn.

Enchanted City is fully accessible for wheelchairs and pushchairs.

For any accessibility questions drop us an email via: enchantedcity@newcastle.gov.uk

Access at Enchanted City:

- This visitor guide is available to read through in advance.
- Inside the event, we have an Access stand as part of the box office– staff will be able to support you, answer questions and give advice.
- We will have plenty of friendly event volunteers and staff available across the event – they are there to support you to get the most out of your visit. Look out for people in Enchanted City branded high-vis.
- There are no strobe lights – but the event does have some elements of noise, smoke, fire and colour change/flashing lighting.
- The event is step free for wheelchair users.
- Toilets and accessible toilets are available.
- There will be some BSL interpretation on Unfolding Theatre's installation on Friday and Saturday slots.

Is Enchanted City a set trail?

No, Enchanted City does not have a set trail; you can explore the site and artworks at your leisure. There is a map in this programme so you can see where everything is, and there will be maps and signage on site, so that you don't miss anything.

Some of the installations have limited visitor capacity, so during busy periods, you may have to wait for entry.

What do I wear, is the event outdoors?

Enchanted City is an outdoor event designed to go ahead in all weather.

We advise you to wear all the layers! It is December, so please wrap up warm and get your sensible sturdy and flat shoes on!

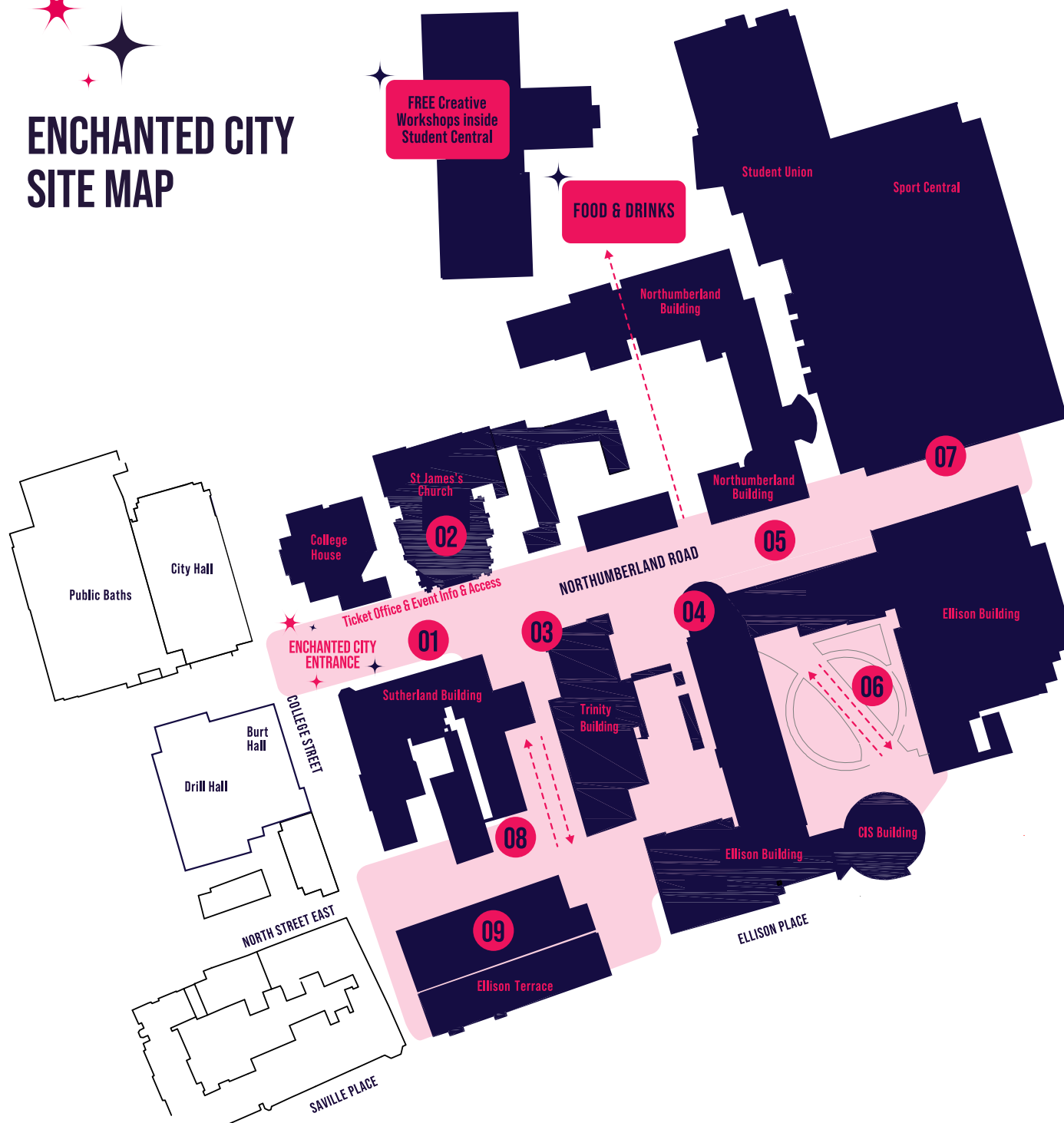
Will there be food and drinks available?

As part of your Enchanted City visit, you can warm up with some delicious food and drinks. See map for location.

For any event information or updates – we will email you using the email you used to book and use our Enchanted City social media channels.



ENCHANTED CITY SITE MAP



NOTE: YOU CAN EXPLORE THE ARTWORKS IN ANY ORDER.

01 **CLEAR THE WAY**
by Unfolding Theatre

02 **ASCENDANCE**
by Studio McGuire

03 **LADDER TO THE MOON**
by Studio Vertigo

04 **SIGNAL**
by NOVAK

05 **CLUSTER**
by Sound Intervention

06 **CONSTELLATIONS**
by Studio Vertigo

07 **MIND AND MATTER**
by Limbic Cinema

08 **TERRA NOVA**
by Bethan Maddocks and Jona Aal

09 **A PEACE OF SPACETIME**
by AndNow:

ACROSS THE SITE:

10 **STARMONGERS**
by Judith Hope and Moving Parts Arts

11 **HOROSCOPE HOTEL**
by Amy Lord x Newcastle University & Northumbria University Fine Art Students

#ENCHANTEDCITYNCL ARTWORKS AND ARTISTS:

#1 CLEAR THE WAY by Unfolding Theatre

Inspired by The Kessler Syndrome, Clear the Way is an immersive, dreamlike installation inviting visitors to reflect on what no longer serves you and to write these thoughts on luggage tags. Step into a surreal 'emotional baggage drop-off' beneath an illuminated night sky, where artist Lady Kitt's sculptural set, and musician Beccy Owen's magical audio landscape create a dreamlike atmosphere.

- What is the baggage you are carrying that no longer serves you?
- What do you want to leave behind in 2025 so you can clear a path into 2026?
- Is there a belief or habit you've outgrown that you wish to gently set down?

Hanging your tag adds it to a glowing constellation of unlearned ideas—signifying release and renewal.

Unfolding Theatre is a Newcastle-based company creating big-hearted, community-driven theatre that brings together people from diverse backgrounds to co-create lively and thoughtful performances.

www.unfoldingtheatre.co.uk

Instagram: @unfoldingtheatre



#2 ASCENDANCE by Studio McGuire

Ascendance is a life size holographic projection of an astronaut set in a church. Severed from the mothership an astronaut drifts through a poetic cosmos of wistful and beautiful hallucinations caused by his dwindling oxygen levels. This installation is a serene space to sit and contemplate the fragility and fleeting nature of human existence.

Studio McGuire is the Bristol/Hull-based art duo of Davy McGuire and Kristin McGuire — they create immersive, mixed-reality theatre and projection-mapping installations that blur the line between physical and digital worlds, combining theatre, fine art, animation and installation to craft magical visual experiences.

www.studiomcguire.com

Instagram: @the_davy_mcguire



#3 LADDER TO THE MOON by Studio Vertigo

Ladder to the Moon brings the celestial into the scale of the everyday, turning a familiar, functional object into an improbable route to something usually far beyond reach.

But what is the ladder for? It could be an escape route, a way home, a vantage point, or simply a refusal to accept that some things are untouchable.....

Studio Vertigo is an internationally renowned light-art and design collective based in Newcastle, founded by artists Lucy McDonnell and Stephen Newby.

Their work transforms public spaces into immersive, luminous environments through sculptural light installations and architectural interventions that blend art, space, and audience interaction.

www.studiovertigo.co.uk

Instagram: @studio_vertigo

#4 SIGNAL by NOVAK

SIGNAL is a new collaboration between NOVAK with local composer, Ed Carter. This projection artwork takes real radio transmissions from deep space and transforms them into an ever-shifting landscape of light and sound.

NOVAK is an internationally renowned creative studio based in Newcastle upon Tyne, specialising in immersive motion design, projection mapping, and large-scale light and media installations.

www.novak.uk

Instagram: @novak_uk

#5 CLUSTER by Sound Intervention

Cluster invites all to step inside a living galaxy. Wander — or dance — through thousands of shimmering points of light, each one a star in motion, sweeping in orbit around an unseen cosmic centre. As the universe shifts around you, a newly composed soundscape by Dan Fox unfolds: an expansive, otherworldly score inspired by the sonification of space itself.

Sound Intervention is an internationally respected creative studio — rooted in Cumbria — that specialises in immersive outdoor sound- and light-based installations, site-specific performances, and atmospheric media art.

www.danfox.net

Instagram: @soundintervention

#6 CONSTELLATIONS by Studio Vertigo

At night, scattered points of light in the sky are joined into constellations. Constellations brings that idea down to earth, forming a quiet cluster of light in the landscape. Accompanied by an ambient soundscape using NASA's sonified space data, the work reflects on how separate points - stars, places, people - become part of larger patterns, inviting a sense of connection, renewal and our place in the universe.

Studio Vertigo is an internationally renowned light-art and design collective based in Newcastle, founded by artists Lucy McDonnell and Stephen Newby.

Their work transforms public spaces into immersive, luminous environments through sculptural light installations and architectural interventions that blend art, space, and audience interaction.

www.studiovertigo.co.uk

Instagram: @studio_vertigo

#7 MIND & MATTER by Limbic Cinema

An awe-inspiring projection-mapping spectacle where animation, music, urban architecture, and science converge to open a gateway through time and space. Mind & Matter invites everyone to rediscover the cosmos — and our place within it — with fresh perspective and renewed wonder.

Step into a journey that spans the chaos of the Big Bang, the mysteries of ancient stargazers, the breathtaking visions revealed by the James Webb Space Telescope, and humanity's enduring curiosity to understand ourselves and the universe we call home.

Limbic Cinema is an award-winning multimedia creative studio that transforms spaces and transports audiences through immersive light, sound, and video-art experiences — from projection-mapped architecture to theatre, festival stages, gallery installations and beyond.

www.limbiccinema.com

Instagram: @LimbicCinema

#8 TERRA NOVA by Bethan Maddocks and Jona Aal

Terra Nova celebrates migration and the history of star navigation. Mirroring an Armillary Sphere, an ancient astronomical tool for mapping the sky, this artwork creates a celestial map of stars, mariners' compasses, sextants and satellites put into space to aid travel. Spinning alongside these human navigation tools are migratory birds; birds who like sailors of the past rely on starlight and constellations to migrate across the world.

Bethan Maddocks is a Newcastle-based visual artist who creates socially engaged, site-specific artworks by working with archives, local communities and organisations to collect stories and turn them into tactile, immersive installations.

Often working with light, paper, fabric and found objects, Bethan builds interactive sculptures and large-scale paper-cut environments that invite viewers to explore history, place and shared human experience.

www.bethanmaddocks.com

Instagram: @bethan_maddocks

#9 A PEACE OF SPACETIME by AndNow

A Peace of Space Time is a chance to enter a universe of celestial understandings, misunderstandings and sparkling fiery imagery... hosted by an intriguing crew of comedic celestial seekers from who knows where, who will be asking questions and seeking some answers to your wonderings about 'what is up there'. ...come and marvel at the solar flares, Milky Way and the Plough and see if you can spot the Seven Sisters.

AndNow is an arts company led by Mandy Dike & Ben Rigby, creating immersive site-specific performances and installations that combine natural materials, fire, light and sound to evoke ritual, landscape and communal storytelling.

www.andnow.co.uk

Instagram: @andnow.art

#10 STARMONGERS by Judith Hope and Moving Parts Arts

Inspired by the astronomers of the 18th century, The Starmongers are two large, illuminated, roaming puppets. Ethereal cosmic characters, they are guardians of the stars, reading the night sky and conveying messages from the constellations. These glowing figures are seated in ramshackle chairs, high above their audience, pedaling through the sky, propelled by rods and mechanisms attached to the wheels.

Moving Parts Arts is a Newcastle organisation dedicated to nurturing and showcasing puppetry, visual theatre and community-led arts through workshops, festivals and creative commissions. They also run Newcastle Puppetry Festival.

www.movingpartsarts.com

Instagram: @movingpartsarts



#11 HOROSCOPE HOTEL by Amy Lord x Newcastle University & Northumbria University Fine Art Degree Students

Welcome to the Horoscope Hotel. You are invited to explore the darkness of Enchanted City and search for a door that symbolizes an aspect of your personality—whether or not you believe in it—represented by your star sign.

On this zodiac-themed treasure hunt you'll be gifted an Astrological reading created for this very specific point in time, by Astrologer extraordinaire, Lina Della Luna.

After finding yours, check those of your loved ones and friends to see how they connect or what you can learn.

Each door is a portal to an astrological destiny and created by a Fine Art student from Northumbria University or Newcastle University.

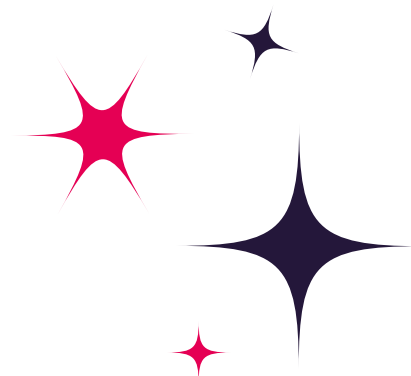
[Click here to find out more about each student & Horoscope Hotel door.](#)

#HoroscopeHotel25

Amy Lord is a North East artist working across live art, installation, performance and participatory projects; her work blends media, craft and immersive environments to explore human connection, memory and the boundary between everyday life and art.

www.amy-lord.com

Instagram: @amy_lord



ENCHANTED CITY MAKE & TAKE WORKSHOPS

As part of your Enchanted City adventure, drop into our Make & Take Workshop area and dive into three fun, creative activities led by artists!

SPACE LANTERN MAKING

with artists Nicola Lynch & Sally Southern

Get ready to light up the universe!

Create your very own shining space lantern at this a magical drop-in workshop with artists Nicola Lynch and Sally Southern.

Taking inspiration from the artworks, you've seen across Enchanted City, design a mini luminary to take home; decorate it with planets, constellations, and cosmic patterns, then bring it to life with a colour-changing LED candle that glows like a tiny star.

Suitable for all ages and abilities; just let your creativity shine!

Nicola Lynch is a North East community artist whose practice blends participatory workshops, sculpture and site-responsive installations.

www.nicolalynch.co.uk

Sally Southern is a North East community artist, illustrator and textile designing working in the community on creative colourful projects and commissions.

Facebook: @sallysouthernartist



THE MOON BOOTH

with Green Croft Arts

The Moon Booth brings a beloved piece of vintage Americana back to life. Inspired by the iconic “paper moon” photo booths that charmed fairgoers from the late 19th to mid-20th century, this handcrafted installation invites visitors to climb onto a crescent moon, choose a prop, strike a pose and capture a moment of pure theatrical fun.

Enchanted City visitors can leave with a charming keepsake print—plus a digital copy on Facebook.

Green Croft Arts is an arts and wellbeing organisations based on the Northumberland and Cumbria border offering creative workshops, movement and sound healing classes, immersive installations and community focused events and projects.

www.greencroftonthewall.com

Instagram: @greencroftonthewall

COSMIC ACCESSORY MAKING with artist Helen Pailing

Inspired by the night sky, design a moon-phase brooch or craft a cosmic necklace made from recycled 35mm film with artist Helen Pailing.

Using sustainable materials and simple making techniques, you're invited to create unique wearable art that captures the mystery of the universe ... and celebrates your place within it.

Suitable for all ages and abilities; leave glowing, wearing a little piece of the cosmos.

Helen Pailing is a North East artist transforming salvaged materials into sculptural installations and mixed-media works, recrafting waste into art!

www.helenpailing.com

Instagram: @helenpailing



ENJOY FOOD & DRINKS AT ENCHANTED CITY

Rest, refuel, and recharge after your journey through the cosmos!

A selection of delicious food options and drinks will be available to purchase each evening.

SHARE YOUR EXPERIENCE WITH US!

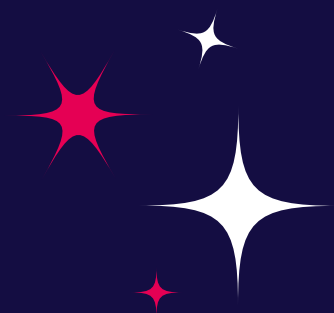
As this is Enchanted City's very first year, we'd love to hear what you think! Your feedback helps us make the experience even more magical in the future. You can share your thoughts in a few easy ways:

Chat with one of our friendly on-site evaluators — surveys take just 5–10 minutes.

Look out for a post-event survey sent to the email you used when booking.

Share your experience on social media using **#EnchantedCityNcl** or tag us in your photos and videos on Facebook & Instagram: @enchantedcityncl

Thanks for helping us shape the future of Enchanted City!



Enchanted City

From city streets
to cosmic skies

Enchanted City is delivered by Newcastle City Council.
Funded by Newcastle City Council and North East Combined Authority.
Delivered in partnership with Northumbria University Newcastle.

If you'd like to connect with the event team, email: enchantedcity@newcastle.gov.uk

A HUGE THANK YOU TO.....

All the wonderful artists, technicians, staff and volunteers who have worked
so hard to make Enchanted City possible.

Also, thanks to NE1 and NG1 who have supported the promotion of the event.

Become an Enchanted City Supporter

If you would like to play a part in supporting Enchanted City in future years, why not
consider becoming a supporter!

To find out how you can get involved with Enchanted City and to discuss partnership
opportunities email: Rachel.Horton@newcastle.gov.uk