

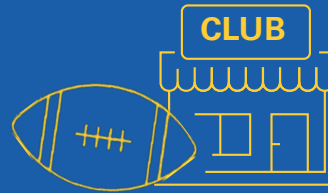


Your Newbury RFC

One club, run by members for the community

2020

Your club at a glance:



Formed in **1928** - **Six** generations - **92** years



20 age group teams from U5's to adults – male and female



600+ members **475** playing members



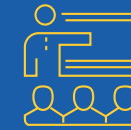
60 volunteer coaches and managers providing over **3,000** hours of coaching per season



26 Acres of playing fields providing **4** full size Rugby pitches (**3** floodlit), training area and **2** new dedicated mini pitches



21,000 square feet of buildings and a large car park



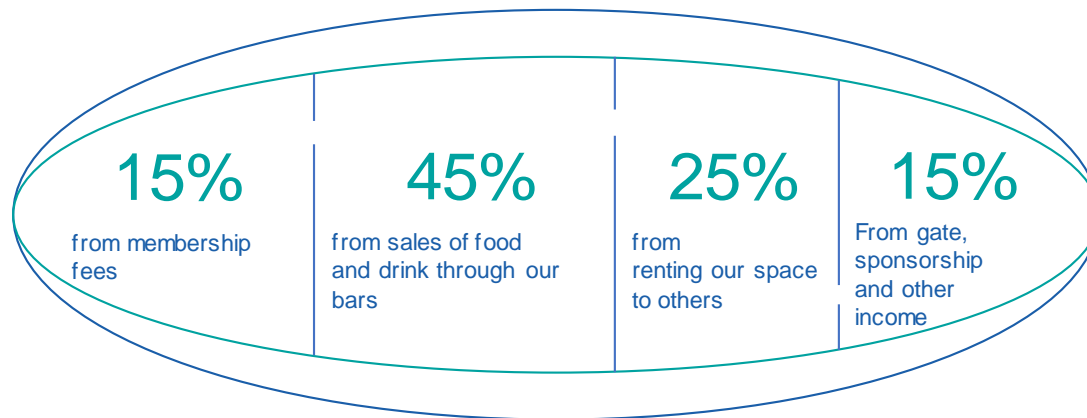
13,500 square feet of commercial space including conference space



3 full time employees

Our financial position

We generated income of **£600,000** in the year ending **June 2019**:



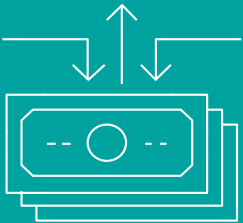
BUT our club cost **£720,000** to run in the year ending **June 2019**:



Whilst cash reserves exist from the sales of adjacent land, we have no more land to sell. Running at a deficit is not sustainable and therefore, as a responsible membership, we must collectively address this to ensure the future of the club for ourselves and future generations.

Structural and operational measures to fix the deficit

A combination of cost savings and income generation are required to address our yearly deficit.



Actions being taken to get a tight grip on costs:

- A new Management board has been established overseeing all aspects of club (with key focus area sub groups)
- Improved processes to better evaluate fixed and variable cost base
- Historic loss making gym moved downstairs into the Langdon suite into more effective space for membership numbers / cost base



Actions being taken to drive commercial income:

- Improve the club sales, make better use of the building and execute better control on expenses
- Improvements to marketing to existing customers, and untapping the existing club member resource
- Improved management of team / resources and identification of skill gaps

10 ways you can help

Collectively we need to come together to fix our finances.

Individually we need to support in as many ways as possible however small.



01

Use the facilities as often as you can (business or social requirements).



02

Join the 100 club. There are forms in the club house



03

Raise funds for the club through your age groups. So many opportunities



04

Volunteer a little time to assist with various tasks around the club. You will have a life/job skill that will help



05

Spread the word to local business contacts about our conferencing/room hire facilities

06



Use the new Gym in the Langdon suite (pay as you go or full membership options available)

07



Encourage friends / family to come to the club / use the facilities

08



Come along to one of the social events (monthly Quiz nights etc.)

09



Encourage your contacts, employer to sponsor the club. Every bit helps

10



Speak to us and tell us what you want. Contact either Lou Goodall Rugby Chairlady David Jones President or Steve Gibbs Chairman of the Trustees

Unless we act together now, the standard and type of facilities we enjoy and the cost we can provide it to members at will be under threat. We must urgently fix our financial position. The management of this club is being driven by the efforts of a few volunteers - however the responsibility to fix this falls upon all of us.

Remember our facility is the envy of many. It has amazing grounds, it serves as a major community facility in the area and it is a totally amateur rugby club. Lets keep it and make it your club.