

IN TOUCH

THE OFFICIAL
CHESTER RUGBY
FOOTBALL CLUB
PROGRAMME

ISSUE 4 20019-20



v WHARFDALE

National 2 North Saturday 16 November 2019, Kick Off 3pm





Chester RUFC Key Contacts

President Mike Dangerfield

Chairman Dave Maloney

Vice Chairman Peter Craven

Secretary Steve Bate

Head of Finance Darren Burbedge

Head of Rugby Dave Craven

Head of Projects Martin Huber

Chair of Minis and Juniors Dan Huxley

Junior Manager Ian Wilson

Squash Chairman Ian Walton

Exec Member Ross White

Exec Member Andy Moore

Exec Member Sabrina McGill

Club Captain Colin Campbell

Head Coach Jan Van Deventer

2nd XV Captain Tom Mullen

3rd XV Captain John Marsden

Devas' Captain Sammy Evans

Safeguarding Officer Brett Williamson

Programme Editor Guy Hodgson

Photography Paul Best

Web Manager Tim Carty

As always we offer a warm welcome to our match officials today. It's possible you won't agree with every decision they make during the course of the game, but please remember this is Rugby Union, not Association Football – if you're the type who enjoys berating or even abusing officials, I would respectfully suggest this is not the place for you.



Please respect the match officials.

**Dave Maloney
Chairman**



Founded 1879 - Reformed 1925

Hare Lane, Littleton CH3 7DB

Tel: 01244 336017

Fax: 01244 336017

Affiliations

Rugby Union League, English Clubs, Championship
League

The views expressed in the programme by contributors are not necessarily those of Chester Rugby Football Club



President's Welcome...

Today we're pleased to welcome the players, officials and travelling supporters from Wharfedale RUFC. Last season the meeting between our two sides at Hare Lane was a tight affair, with Chester sneaking it by just three points. I'm sure this afternoon's game will be no different and we look forward to a competitive encounter.

Our visitors won at home against Hinckley last time out whilst the Chester boys travelled to Grasshoppers and came away with five much needed points. Debutant Will du Rant made an immediate mark, contributing two tries.

Elsewhere our other senior teams all won - the 2nds away at Rossendale, the 3rds at home to Liverpool Vets 2nds and the Devas away at Workington. A

special mention here for our ladies who, under the guidance of new coach Tony Probert, have had a great start to the season, winning all five of their matches to date.

With the disappointment of the RWC Final result slowly beginning to fade, it's back to domestic matters with the Premiership and the European Cup. Of course the furore surrounding Saracens has made all the headlines, but there were a couple of perhaps unexpected results last weekend with Bath overcoming the previously unbeaten Northampton and Bristol coming back to win at Exeter after being 17-0 down at the break.



You will probably all be aware by now that our friend Rupert Davies passed away just over a week ago. I first got to know him back in the days of the club carnival when he and I were part of the team preparing for the event in the weeks before. Over the years he and I have had our ups and downs but always managed to make up over a beer or three. He was funny, controversial and sometimes a grump but he was, without doubt, a Chester Rugby Club man through and through. We'll all miss you Rupe. His funeral will be held at the Crematorium at 2.00pm on Wednesday 27 November.



Mike Dangerfield
President



Chester 1st XV

Fixtures and Results 2019/20

Opponent	Venue	For	Against	Match Points	Total Points	Tries
<i>Sheffield Tigers</i>	A	19	25	1	1	3
<i>Caldy</i>	A	10	18	0	1	2
Loughborough Students	H	29	23	5	6	5
<i>Luctonians</i>	A	24	20	5	11	4
Hull	H	14	5	4	15	2
<i>Otley</i>	A	17	18	1	16	3
Sedgley Park	H	24	28	1	17	3
<i>Fylde</i>	A	17	42	0	17	3
Scunthorpe	H	P	P		17	
<i>Preston Grasshoppers</i>	A	27	10	5	22	5
Wharfedale	H				22	
<i>Huddersfield</i>	A				22	
Tynedale	H				22	
<i>Stourbridge</i>	A				22	
Hinckley	H				22	
Caldy	H				22	
<i>Loughborough Students</i>	A				22	
Luctonians	H				22	
<i>Hull</i>	A				22	
Otley	H				22	
<i>Sedgley Park</i>	A				22	
Fylde	H				22	
<i>Scunthorpe</i>	A				22	
Preston Grasshoppers	H				22	
<i>Wharfedale</i>	A				22	
Huddersfield	H				22	
<i>Tynedale</i>	A				22	
Stourbridge	H				22	
<i>Hinckley</i>	A				22	
Sheffield Tigers	H				22	
		181	189	22	22	30



Chester 1st XV

Chester RUFC Appearances & Points 2019-20							
Player	Apps	Subs	Tries	Cons	Pens	Drops	Pts
Colin Campbell	8		1				5
Alick Croft	6	1	6				30
Rhodri Rhys Parry	8	1	1				5
Ric Cottrell	3	2					0
Harry Wilkinson	5	1					0
Guy Ford	7	1	3				15
Mike Craven	6		2				10
Shay Owen	3	2	3				15
Tom Holloway	6	1	2				10
Callum Bennett	7			9			18
Harrison Vare	7	1	4				20
Macca Van Sertima	7						0
Tom Foden	6	1					0
Andrew Oakden	6	2	1				5
Sean Green	9		1				5
Scott Robson	2	7					0
Alex Reed	2	6					0
Mark Dixon	7	2		5	1		13
Kyle Joseph	7	2	3				15
Josh Morris	3	2					0
Oliver Buckley	2	1					0
George Baxter	8						0
Johnny Charmley	4	4					0
JJ Broberg	1	2					0
Jimmy Lloyd	2	3	1				5
Sam Farrar		1					0
Tom Gregory		1					0
James Hattersley	1						0
Dan Pemberton	1						0
Willem Du Randt	1		2				10
Wade Williams		1					0
							0
							0
							0
							0
TOTALS	135	45	30	14	1	0	181



We welcome today's opponents... Wharfedale



Courtesy of wharfedalerufc.co.uk

At a glance...

President John Spencer

Secretary Philip Eddleston

Head Coach Jon Feeley

The North Yorkshire town of Threshfield had a population of 968 according to the 2011 census, so it is remarkable that it boasts a club of the stature of Wharfedale.

Founded in 1923 when a local doctor and vicar decided to form a team, they were in the third tier of the league structure for 20 years until 2016. While they were there Andrew Baggett, now the coach at Middlesbrough, became the National League's highest points scorer with 1707 as fly-half for Wharfedale and Blaydon.

He is eclipsed in rugby stature, however, by the club's president John Spencer, who played for England, was the tour manager for the British Lions in New Zealand in 2017 and is now president of the RFU.

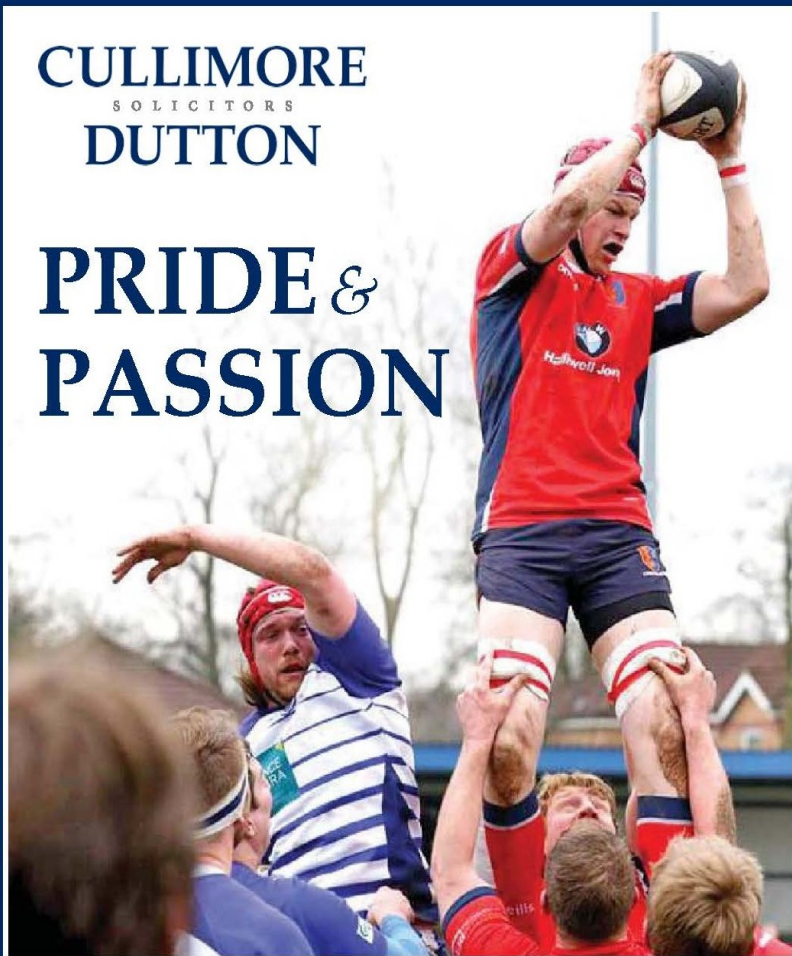
The club plays at Wharfside Avenue in the heart of the Yorkshire Dales and is one of the most picturesque in the UK. John Inverdale, in the *Daily Telegraph*, wrote: "To be among a large crowd at a National League match at Wharfedale Rugby Club . . . was to have found sporting nirvana. If there's a more wonderful sporting venue in the country for serious competitive sport, I've yet to visit it."

Trivia fact

Wharfedale's crest, bearing a ram's head and the Yorkshire white rose, includes the motto "Vis Ex Montibus Venit", which translates to "Strength Comes from the Hills"

CULLIMORE
SOLICITORS
DUTTON

PRIDE & PASSION



PROUD to support your Club &
PASSIONATE about the legal services we provide

Use Cullimore Dutton's legal services and CRUFC will receive **five per cent** of any fees paid. Simply quote '**CHESTER RUGBY**' when you instruct us. Contact us to discuss how we can support you.

www.cullimoredutton.co.uk | info@cullimoredutton.co.uk
01244 356 789 | 20 White Friars Chester CH1 1XS

READY TO MEET THE 1?



The Ultimate Driving Machine



EXPRESS YOURSELF.

The BMW 1 Series has been redesigned to go beyond the journey and co-pilot your life. Boasting a 5-door design with a new sporty look and BMW TwinPower Turbo engines, it also comes with an enhanced digital eco-system that seamlessly merges your life into the driving experience.

The BMW 1 Series has evolved to a more expressive look and feel, and with this comes a new flowing silhouette that is complemented by a reimagined Hofmeister kink.



HIGH-QUALITY MATERIALS

Ergonomically optimised equipment and pioneering technologies.

For more information or to book a 24 hour test drive* call our sales team on 01244 739063

Halliwell Jones Chester

Sealand Road, Chester, CH1 4LS
01244 739063 halliwelljones.co.uk

HALLIWELL JONES

Official Fuel Economy Figures for the BMW range: Urban 15.3 - 72.4mpg (18.4 - 3.9 l/100km), Extra Urban 29.4 - 91.1mpg (9.6 - 3.1 l/100km), Combined 22.0 - 47.8mpg (12.8 - 0.06 l/100km). CO₂ Emissions 294 - 0g/km. *Test drive subject to applicant status and availability.

INNOVATION IN ENGINEERING



Keltbray Group is a UK leading specialist business, which offers engineering, construction, demolition, decommissioning, remediation, rail, environmental services and reinforced concrete frame solutions.

We are specialists in developing and maintaining Britain's built environment and operate in highly regulated environments and take pride in delivering projects safely, on time and budget, and with care for the environment and our communities.



St Andrew's House
Portsmouth Road
Esher, Surrey KT10 9TA

T 020 7643 1000

F 020 7643 1001

E enquiries@keltbray.com

www.keltbray.com

CARPETS • FLOORING • BLINDS • BEDS



Maltbys of Chester are a friendly family business providing the finest in quality since 1947, from student homes to country estates there is something for everyone.

With over 67 years of experience and three generations later, the team at Maltby's still pride ourselves on offering a first class, friendly service accompanied with extensive knowledge, expertise and competitive prices, ensuring Maltby's is the right choice for you.

Our friendly, relaxed showroom provides numerous choices where one of our team will be happy to discuss your options. Whatever your needs we will have the perfect product for you no matter what size or style of property or home. We have a comprehensive display from all major suppliers with a vast range in style, design and budget, so why not contact us or visit our showroom, we can even organise samples for you to see in the comfort of your own home.



- Carpets – from luxurious to budget, stainfree to velvet the choice is endless
- Natural floorings – these stylish floors include sisal, coir, seagrass & jute
- Luxury Vinyl Tile – Innovative, hardwearing and practical
- Wood – solid wood or engineered plank fitted to perfection
- Vinyl & laminate – long established products, easy to fit & maintain
- Commercial – from safety flooring to carpets and carpet tiles
- Blinds – for that finishing touch to your room
- Beds – for landlords accommodation or that perfect nights sleep
- Accessories – that final touch including stairmats, beading & underlays

At Maltby's we offer an unrivalled experience with first rate service beginning with the selection of your new flooring, carpet, bed or blind right thru to its expert installation regardless of size or complexity.

Ambico

carpet

Brintons
FINE CARPETS

Cormar
CARPETS & FLOORING

CRUCIAL TRADING

jacaranda
CARPETS

ulster
CARPETS

VICTORIA CARPETS
Established 1947

Maltby's
of Chester

**Providing the Finest in
Quality since 1947
103 Brook Street, Chester,
CH1 3DX • 01244 324560**

www.maltbysofchester.co.uk • sales@maltbysofchester.co.uk

Integrated Health and Safety

Construction Health and Safety Specialists

- CDM Support
- Construction Client Support
- Principal Designer Support
- Contractor Support
- Project Health and Safety Support



www.ihfsafety.co.uk

01928 716702



**LOOKING TO SAVE MONEY ON YOUR
COMMERCIAL ENERGY PRICES? GIVE YOUR
ENERGY SUPERHEROES A CALL TODAY!**



**VISIT US ONLINE TODAY & UPLOAD
YOUR BILL TO SAVE IN SECONDS!
AND JUST SIT BACK AND RELAX AS WE
FIND THE BEST DEAL FOR YOU!**

**WE SEARCH OVER 70 PROVIDERS FOR THE BEST
RENEWAL PRICES, WE SWITCH YOUR DEAL, AND
BEST OF ALL YOU DON'T PAY US A PENNY!**

WORKING IN PARTNERSHIP WITH



0808 196 1760 | www.ashenergy.co.uk

SAFE HANDS FOR YOUR FINANCES,
PEACE OF MIND FOR YOU

TEL: 01244 680780

www.mclintocks.net

Solicitors for Life | Est.1887

BUTCHER & BARLOW

The Big Firm on your doorstep

Agriculture

Our specialist Agriculture Team can assist you with a broad range of rural matters from farm sales and boundary issues through to succession planning and business structures.

01606 334 309 | enquiries@butcher-barlow.co.uk | www.butcher-barlow.co.uk

Offices throughout Cheshire and Lancashire



Meet the players and their sponsors

Colin Campbell



sponsored by



Dave Maloney

Tom Foden



sponsored by



Sean Green



sponsored by



Dave, Claire
& Joe Maddocks

Tom Foden



sponsored by



Guy Ford



sponsored by

Manley Old
Hall Fishery

Mike Craven



sponsored by



Rik Cottrell



sponsored by



Sean Green



sponsored by

Ian
Colquhoun
Lynn

Alex Reed



sponsored by



Mark Dixon



sponsored by



Chris Matheson MP

Shay Owen



sponsored by



Alick Croft



sponsored by



George Baxter



sponsored by



Mike Dangerfield

Alison Fox



sponsored by



The McKeevers

Josh Morris



sponsored by



Rhodri Rhys



sponsored by



Craig Ross



sponsored by



John Marsden



sponsored by



Jon Chinn

To sponsor your favourite player call 01244 336017



Meet the players and their sponsors

Macca van Sertima



sponsored by

COLOMENDY FARM
HOME OF NORTHOP HALL
ALPACAS

Guy Ford



sponsored by

LegatOwen

Rob Fitzgerald



sponsored by



Harrison Vare



sponsored by



Alick Croft



sponsored by



Harry Wilkinson



sponsored by



Tom Hadlow



sponsored by



James Robins



sponsored by

SERVACO PPS

Tom Holloway



sponsored by

Halliwell Jones



Alick Croft



sponsored by



Kyle Joseph



sponsored by



Jake Shill



sponsored by



Tom Holloway



sponsored by



Alick Croft



sponsored by

**SBR Specialist
Coachbuilders**

Shay Owen



sponsored by

Waterco

Alick Croft



sponsored by



Tom Mullen



sponsored by



Tom Gregory



sponsored by



To sponsor your favourite player call 01244 336017



Meet the players and their sponsors

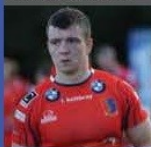
Shay Owen



sponsored by



Callum Bennett



sponsored by

John
Benson

Jonny Charmely



sponsored by

easylife
Garden Machinery

George Baxter



sponsored by



Jimmy Lloyd

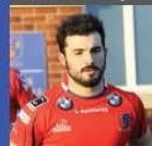


sponsored by



Tony Wilson

Tom Holloway



sponsored by

Mike
Holloway

Colin Campbell



sponsored by



Tom Foden



sponsored by

Craig
Cawthorne

Harrison Vane



sponsored by

Colts
2014

Harry Wilkinson



sponsored by

CUIDANT
GROUP

Mike Craven



sponsored by

Midland
Slurry Systems Ltd

Jack Hughes



sponsored by

Colts
2014

James Slater



sponsored by

Colts
2014

Alick Croft



sponsored by

FOSTERS
COMMERCIALS LTD
VEHICLE BUILDERS

George Baxter



sponsored by

 **CHESTER**

Rhodri Rhys



sponsored by



Hoobs & Taff

Colin Campbell



sponsored by



Sean Green



sponsored by



To sponsor your favourite player call 01244 336017



Meet the players and their sponsors

Alick Croft



sponsored by



Sophie Thursfield



sponsored by

SPEKVA

Alick Croft



sponsored by



Rik Cottrell



sponsored by



Mum, Steve & Alison

Alick Croft



sponsored by



Jimmy Lloyd



sponsored by



Max Himbury



sponsored by



Mike Craven



sponsored by



John Craven

YOUR LOGO HERE



YOUR LOGO HERE

Alick Croft



sponsored by



YOUR LOGO HERE



sponsored by

YOUR LOGO HERE

Colin Campbell



sponsored by

Olde Cottage

sponsored by



YOUR LOGO HERE

sponsored by



YOUR LOGO HERE

sponsored by



YOUR LOGO HERE

sponsored by



YOUR LOGO HERE

George Baxter



sponsored by



James Robins



sponsored by



To sponsor your favourite player call 01244 336017



League Update

Wharfedale 24-19 Hinckley

Wharfedale showed their ruthless touch and took their chances as they beat Hinckley in an entertaining contest at the Avenue.

The Greens were going in search of their first home win for just over a month and the Yorkshire outfit displayed a clinical edge which allowed them to battle past Hinckley.

The hosts scored first-half tries through Rian Hamilton (2) and Harry Bullough to carry a 19-7 advantage into the second period.

Hinckley's Joe Wilson added to Oliver Povoas' earlier score to reduce the deficit, but the in-form Matt Speres crossed to keep Dale ahead.

And it was a lead the home side wouldn't relinquish in the final 11 minutes whilst Hinckley left Yorkshire with a losing bonus-point following Sam Greening's try.



Rian Hamilton

Fylde 33-7 Loughborough Students

Fylde outclassed Loughborough Students at Woodlands to maintain their one-point lead at the summit of National Two North.

Loughborough, who had dented Sedgley Park's possible promotion hopes at the beginning of the month, couldn't replicate their performance in Lancashire as the league leaders ran in five tries.

Tom Grimes, Connor Wilkinson and David Fairbrother crossed in the first half, with further scores from Adam Lewis and Tom Roebuck.

The Students' only breakthrough during the afternoon came 11 minutes from time as Will Brown darted over, but Fylde proved too strong for Loughborough.

Scunthorpe 7-68 Caldy

Caldy kept the pressure on Fylde as they cruised to victory against Scunthorpe on a day when both teams remembered James Walker.

The Scunthorpe 1st XV player sadly passed away at the start of November and this was the Greens' first match following the tragic news.

In terms of the rugby itself, Ben Jones and Nick Royle shone for Caldy as both players shared seven tries between them with the former scoring four.

JJ Dickinson, Harrison Crowe and Cameron Owen added further tries, with Tom Hughes replying for Scunthorpe.

Caldy have now won all nine of their fixtures this season and they do have a game in hand over leaders Fylde to come.



League Update

Sedgley Park 40-34 Luctonians

Sedgley Park staved off a battling Luctonians to return to winning ways..

The hosts seemed to be cruising after the first quarter as they led 21-3 thanks to tries from James Harper, Jamie Harrison and Tom Ailes.

Both teams then exchanged scores as efforts from Lucts' Oliver Allsopp and Aiden Cheshire were cancelled out by Tom Coe and Ollie Glasse, but the visitors were able to launch themselves back into the contest.

Rob Crowley and Frank Kelly both dotted down after the hour to cut Sedge's lead to six points heading into the final 10 minutes. However, that margin remained the same for the rest of the game as Callum McShane's try was matched by Connor Deignan as Sedge held out.

Tynedale 19-18 Sheffield Tigers

Tynedale stretched their unbeaten to run five thanks to a dramatic late try from Ethan Clarke.

Tyne, who haven't tasted defeat for over a month, appeared to be slipping to their third home loss of the campaign when they trailed 18-12 with two minutes left.

Tries from Jack Redfern-Brown and Jamie Broadley, plus eight points from the boot of Mark Ireland, had put the Tigers on course for their fifth straight win but they were to be denied.

Jonathan Burden and Michael Hughes had dotted down for Tyne and their third try of the afternoon proved decisive as Clarke powered over to snatch the victory for Ben Woods' side.

Huddersfield 32-31 Stourbridge

Huddersfield clinched a late victory to lift them three points clear of the relegation places.

Kian Stewart's try four minutes from the end ended Field's three-match losing streak despite Stour being awarded a penalty try in the last act of the game.

The hosts had led 17-10 at the break with Joel Hinchliffe, Nick Sharpe and Liam Stapley all crossing, whilst Tatenda Mukarati responded for Stour.

It was first blood to Field after the restart as Richard Piper powered over but two Stourbridge tries from Afeafe Haisila and Jack Lea – either side of a home penalty from Will Milner – saw them to within three points of their hosts. However, Stewart's try proved decisive.

Otley 27-23 Hull

Otley recorded their third successive win although the game could have gone either way up until the 75th minute when Ben Steele's try was enough to see Otley home.

The hosts led 13-10 following Paul Petchey's try and eight points from the boot of Ben Smith, while Keane Naylor had gone over for Hull. Josh Hall's effort kept Otley in control, but penalties number two and three of the afternoon from Simon Humberstone kept Hull in touch.

But, replacement Steele barged over to clinch another victory for Otley whilst Hull did come away from this all Yorkshire affair with a bonus-point thanks to Mike Adlard's late converted try.



National League 2 North

	P	W	D	L	F	A	Diff	Try Bonus	Losing Bonus	Pts
1 Fylde	10	8	1	1	359	187	172	8	1	43
2 Caldy	9	9	0	0	353	121	232	6	0	42
3 Sedgley Park	9	7	0	2	229	191	38	4	2	34
4 Tynedale	10	5	2	3	307	232	75	6	3	33
5 Sheffield Tigers	10	6	0	4	232	214	18	4	3	31
6 Stourbridge	10	5	0	5	301	242	59	6	4	30
7 Otley	10	5	2	3	197	226	-29	1	2	27
8 Loughborough Students	10	5	0	5	251	257	-6	3	3	26
9 Wharfedale	10	5	1	4	220	234	-14	2	1	25
10 Hinckley	10	4	0	6	203	250	-47	4	3	23
11 Chester	9	4	0	5	181	189	-8	3	3	22
12 Huddersfield	10	3	2	5	208	286	-78	3	0	19
13 Preston Grasshoppers	10	3	1	6	195	241	-46	2	2	18
14 Hull	10	2	2	6	169	210	-41	1	3	16
15 Luctonians	10	1	1	8	205	313	-108	3	5	14
16 Scunthorpe	9	0	0	9	163	380	-217	3	2	5



Did You Know?

Backwards Pass

As the world enjoyed the calm before the storm that would become known as the Wall Street Crash, Chester Rugby stock was rising.

Ninety years ago the club moved to its first real home, a field off Bumpers Lane, close to where Chester Football Club now play their home matches. Previously the rugby team had played at the Roodee race course.

At the annual meeting in the City Arms pub in the autumn of 1929 the chairman, Colonel Bromley, announced the purchase of the ground "and a good fixture list arranged" that included matches against Winnington Park, Crewe and Nantwich, Wrexham, RAF Sealand and Shrewsbury.

It was a milestone moment in the establishment of the club, but one to which John Craven added a drop of cold water, possibly literally, in his official history *The First 88 Years*.

"There was no mention of a clubhouse," he wrote, "so the players would probably have had to continue to change at the City Arms and use the zinc baths outside in the yard."

League Minutiae

Wharfedale have been awarded three penalty tries this season – there have been a total of eight over the season— in accruing a home record of three wins, two defeats and a draw. They have two wins and two defeats on their travels.

They have scored only two try-bonus points, against Huddersfield and Hinckley, and conceded four, versus Fylde, Sheffield Tigers, Huddersfield and Stourbridge.

Their top try scorer is Matt Speres with five and James Blakeney-Edwards is their leading scorer with 15 conversions and nine penalties, 57 points. They have three ever present starters this year: Harry Bullough, James Blakeney-Edwards and Dan Stockdale.

- Dan Rundle's scoring streak has come to an end for Stourbridge. He claimed a try in each of the first nine games, but failed to cross the whitewash last weekend.
- National League 2 North has passed 500 tries for the season. The tally has reached 522. Two thirds of all tries have been converted successfully.
- Loughborough Students have now used 47 players so far this season. Caldy have used the fewest, 25.



Not many people know that.....



League Statistics

	FOR						AGAINST						Players Used	Penalty Tries
	Tries	Cons	Pens	Drop Goals	Conversion Success		Tries	Cons	Pens	Drop Goals	Conversion Success			
Caldy	49	36	12	0	0.734693878		15	11	8	0	0.733333333		25	0
Chester	30	14	1	0	0.466666667		23	16	14	0	0.695652174		31	0
Fylde	51	37	10	0	0.725490196		26	18	7	0	0.692307692		33	0
Hinckley	30	19	5	0	0.633333333		35	24	9	0	0.685714286		34	0
Huddersfield	28	16	12	0	0.571428571		39	26	13	0	0.666666667		35	0
Hull	19	10	18	0	0.526315789		29	19	9	0	0.655172414		30	2
Loughborough	33	25	12	0	0.757575758		36	22	11	0	0.611111111		47	1
Luctonians	28	19	9	0	0.678571429		45	29	10	0	0.644444444		34	0
Otley	25	15	14	0	0.6		32	21	8	0	0.65625		28	0
Preston	28	17	7	0	0.607142857		33	20	12	0	0.606060606		31	0
Scunthorpe	25	13	4	0	0.52		55	45	5	0	0.818181818		32	0
Sedgley Park	30	23	11	0	0.766666667		25	18	10	0	0.72		28	0
Sheffield Tigers	26	21	20	0	0.807692308		28	19	12	0	0.678571429		30	0
Stourbridge	45	32	4	0	0.711111111		34	18	12	0	0.529411765		31	1
Tynedale	44	30	9	0	0.681818182		34	19	8	0	0.558823529		35	1
Wharfedale	31	19	9	0	0.612903226		33	21	9	0	0.636363636		32	3
TOTAL	522	346	157	0	0.662835249		522	346	157	0	0.662835249		516	8



Chester v Sedgley Park



Over the top: Macca Van Sertima takes to the air to test the Sedgley defence in Chester's last home game



Kick and chase: Tom Holloway uses his boot to gain field position during Chester's 28-24 defeat to Sedgley



Chester v Sedgley Park



Ford fiesta: Guy Ford (No.8) takes the battle to the Sedgley Park forwards last time at Hare Lane



And then a step to the right: Mark Dixon' tries a move from Time Warp to confound Sedgley's defence

SAVILLS LEISURE & TRADING

Holiday & Home
Park Specialists



With over 80 years experience and 26 leisure specialists, we act for the majority of the large groups within the caravan park industry.

Across the UK, our team provides agency, valuation, planning & development and rating services in all aspects of leisure, meaning we are best placed to advise you on your property requirements.

North
16 Grosvenor Court
Foregate Street
Chester, CH1 1HN
+44 (0) 1244 328 141

Central
Wytham Court
11 West Way
Oxford, OX2 0QL
+44 (0) 1865 269 000

South
Starling Court
17 Dix's Field
Exeter, EX11 0AA
+44 (0) 1392 455 794

London
33 Margaret Street
London
W1G 0JD
+44 (0) 207 409 8060

savills.co.uk/leisure



DTM Legal wish all CRUFC teams every success for the 2019/20 season!

DTM Legal are a Top Tier Legal 500 law firm with local solicitors and national expertise. All you need to tackle your legal issues - a trusted partner providing legal excellence and outstanding service.

"The team at DTM Legal have never failed to respond to any legal issue taken to them - covering many areas of law - in a timely, polite, efficient and user-friendly manner. They are, in short, our first port of call when legal situations dictate that we need a service that we can rely on without delay."

*Dave Kynaston
Vice Principal
Reaseheath College*



Contact us

Chester: 01244 354 800

Liverpool: 0151 321 0000

www.dtmlegal.com  

Our Services:

Commercial Property | Residential Conveyancing | Corporate & Commercial
Agriculture | Business Recovery | Dispute Resolution | Healthcare | Trusts & Estates
Employment & HR | Construction & Engineering



**MINSHULL
WINDOWS
LIMITED**

- Windows
- French Doors
- Fascias & Soffits
- Doors
- Porches
- Conservatories

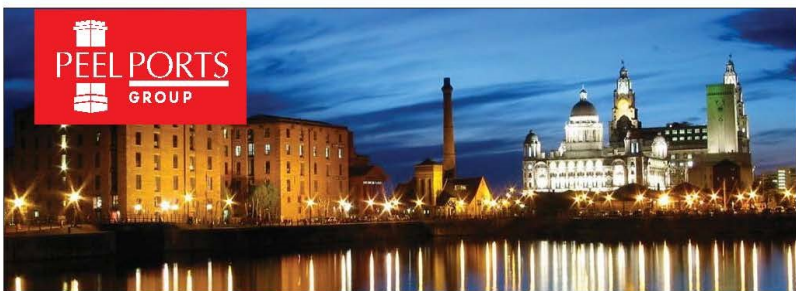
For a FREE no-obligation quote call our number now or visit our website



01244 536162

Minshull Windows Ltd

www.minshullwindows.co.uk



More Than Ports

At Peel Ports Group we're an ideal example of the whole being more than the sum of the individual parts. We're not merely a collection of UK ports with superior infrastructure, facilities and services...we're a unique, innovative network. At the top of our game and at the leading edge of transport and handling facilities and thinking. The national, international and global companies we work with are more than just customers we service. They're partners we help grow and succeed.

We're forward thinking and ambitious, with unrivalled expertise in our field. We can store your goods, safely, efficiently and cost effectively, so that they can be taken in excellent condition, wherever you want them to go.

Our ports aren't the beginning or the end of a journey. They're right at the centre of the supply chain. When your goods arrive, our job is only getting started.

0151 949 6000

www.peelports.com



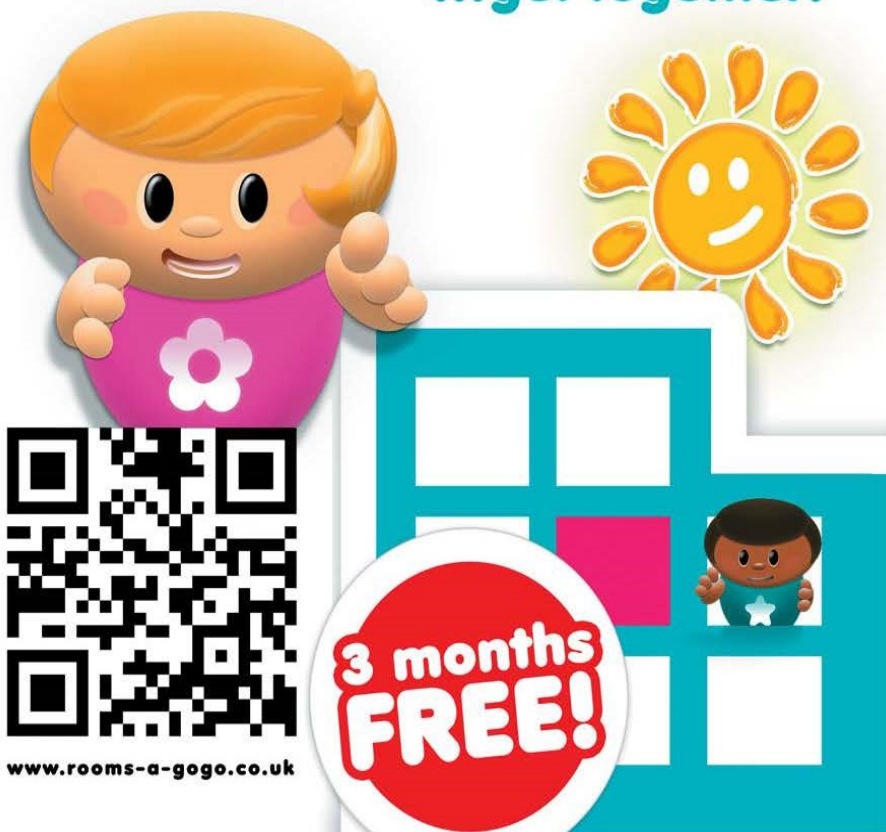
**We wish all CRUFC teams every
success for the 2019-20 season
- from the 1st XV to the Minis.**

www.nicolhughes.com



www.rooms-a-gogo.co.uk

**where landlords and tenants...
...get together!**



[Click here for more information](http://www.rooms-a-gogo.co.uk)



PRESENTS

Live STAND-UP Comedy



CHESTER RUGBY CLUB



MC PETER MCCOLE

"Worth the entry fee alone"
-UK Metro

ARCHIE

Phoenix
Car Share

NEWELL

"...with wit"

FRIDAY JANUARY 31

Chester Rugby Club, Hare Lane,
Vicars Cross, Chester CH3 7DB

DOORS 7PM SHOWTIME 8PM

www.hitandruncomey.com

**Tickets
£15**
(Includes a choice
of three curries)

Since 2007
acts subject to change



MARVYN DICKINSON

"Flamboyant, forceful delivery"
- Notts Comedy

Tickets available at <https://webcollect.org.uk/crucfc/event/cruc-present-an-evening-of-comedy>

FREDDIE MERCURY TRIBUTE NIGHT

STARRING GARY GOODMAZE
EUROPE'S NUMBER 1
FREDDIE TRIBUTE ACT



SATURDAY 22ND FEBRUARY / 7:30 PM

TICKETS £15

CHILLI CON CARNE MEAL
INCLUDED WITH TICKET

PURCHASE TICKETS ONLINE VIA:
[WEBCOLLECT.ORG.UK/CRUFC](http://webcollect.org.uk/crufc)



Today's Teams...

CHESTER v WHARFDALE

Sean Green	15	Harry Bullough
William Du Randt	14	Rian Hamilton
Tom Foden	13	Ben Blackwell
Shay Owen	12	Jonny Moore
Anthony Bingham	11	Josh Prell
Mark Dixon	10	Jack Blakeney-Edwards
Josh Morris	9	Sam Gaudie
Colin Campbell (capt)	1	Matt Beesley
Alick Croft	2	Dan Stockdale
Rhodri Rhys	3	Jack Hirst
Jimmy Lloyd	4	Will Smith
Rik Cottrell	5	George Hedgley (capt)
Kyle Joseph	6	Matt Speres
George Baxter	7	Chris Walker
Guy Ford	8	Rob Baldwin
Scott Robson	16	Ben Patchett
Dan Matthews	17	Toms Asejevs
Harry Wilkinson	18	Jamie Brookes
Mike Craven	19	Matt Houghton
Callum Bennett	20	Henry MacNab



Ref Daniel Woods
AR1 Colin Burrell
AR2 Steve Halliday

NEXT GAME:
Huddersfield
23 November
AWAY