



# **ABERDEENSHIRE CRICKET CLUB**

**STAY AT HOME  
ACTIVITY PACK**



# STAY AT HOME ACTIVITY PACK

We have created this small cricket based activity pack to try and keep your youngsters entertained for a period of time during this period of staying at home. We have included some activities for them to try outside in the garden but also some colouring in and puzzles for them to do indoors.

We would appreciate it if you could share any pictures or videos of you or your youngsters completing these activities to use on our website and social media channels.

If you could send these to:

[Kenny.reid@aberdeenshirecc.org.uk](mailto:Kenny.reid@aberdeenshirecc.org.uk)

If you don't follow already search for us on:

Facebook - @aberdeenshirecc

Twitter - @AberdeenshireCC

Instagram - @aberdeenshirecc



# Outdoor / Garden Cricket Activities

We have three activities for you to try outside in the garden:

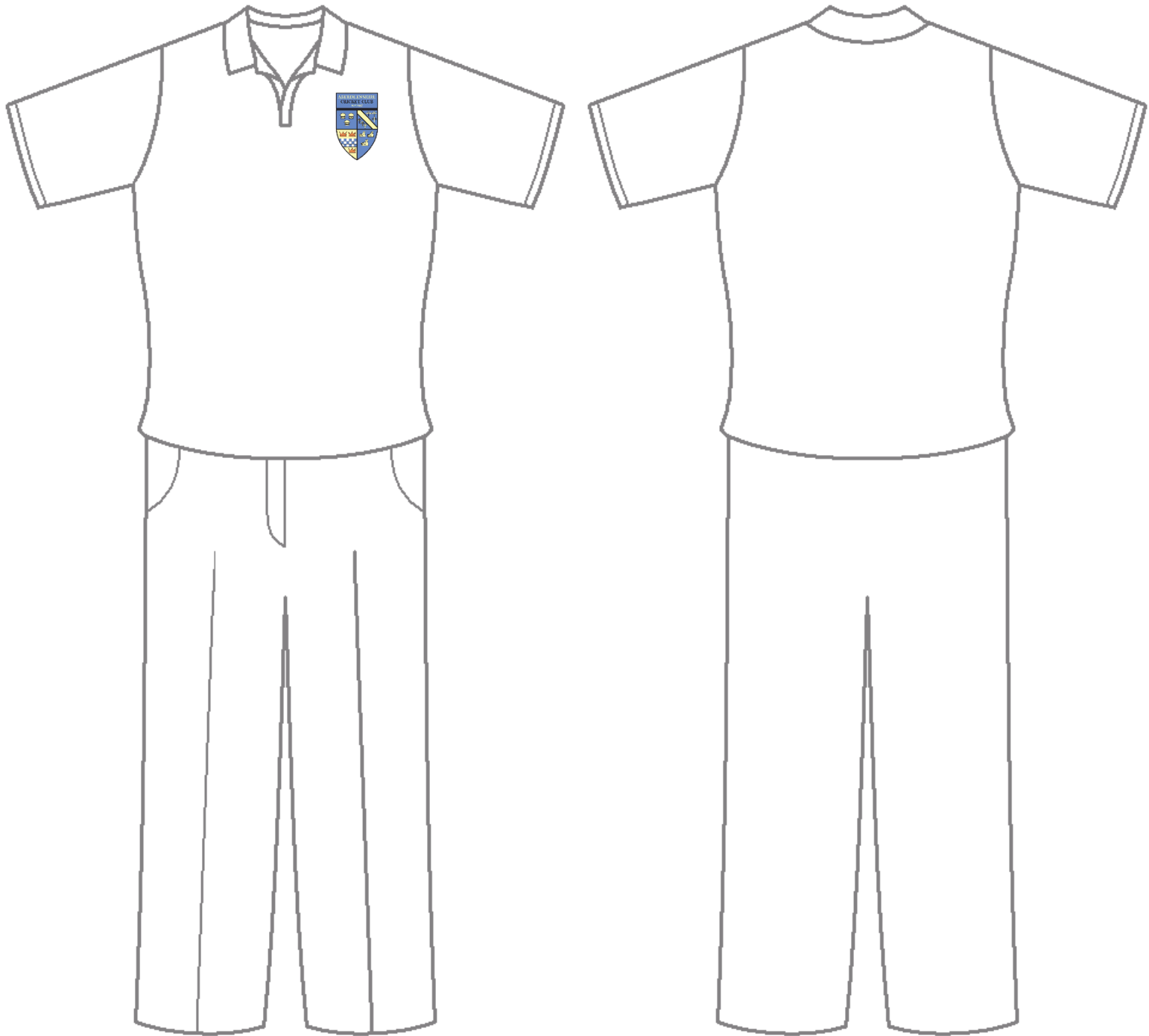
1. As many Keepy Uppies on your bat as you can.  
This can be made more difficult by using only one hand on the handle of the bat or by only using the edge of the bat
2. As many catches as possible in 30 seconds using a tennis ball and a wall.
3. Hitting a tennis ball in a certain area marked out by cones or any other items you can use as make shift cones

There will be videos of some of our first eleven players doing these activities on our social media channels shortly for you to watch and to copy.

We would appreciate it if you could share any videos of you or your youngsters completing these activities or any other Stay at Home Cricketing Activities to use on our website and social media channels. If you could send these to:  
[Kenny.reid@aberdeenshirecc.org.uk](mailto:Kenny.reid@aberdeenshirecc.org.uk)



# Design your own Aberdeenshire T20 Kit



Please send a picture of you with your completed artwork to [Kenny.reid@aberdeenshirecc.org.uk](mailto:Kenny.reid@aberdeenshirecc.org.uk) to see it on our social media pages



# Aberdeenshire CC

## Former Player

### Wordsearch

T O M M L R O O G F R S L T F O N S S P  
P A Y Y R T T U C A L D O N A L D G L D  
U D D R C R O S S T A Y P Q U Q U P H L  
T Y E E F R M D R T E R O G L I N T H I  
U T S R S U L P H G A B B R T T C C P K  
C R O D D S I T U M A C R A E A N A N N  
R R S K B D N J L L Y A O C O N E S T I  
A C A E U E S H H J K L H E T R E E T G  
W V C S T R O S T P K L J K T D Y D Y H  
I E T S S R N E C A O O N O A L W E S T  
S V K V R H A Y S O N T S A W J K N P O  
T B M A R L S Y A S T S S H K W Q V K A  
Y U U F T F M U D E N E E F C C E E F F  
E E S R S E R E R F T G U V G H J E K L  
D E S N G M B P J P M D T Y U J H L Q U  
E R E R T T U O S S M I T H B B C A M B  
O R C S S W K W N U U I I N M N M M P Y  
R T A R N B E R G E R C E R G E R B G Y  
R S S A C R S S T G A C A C E T S T S T  
O N N E O N G H Y K L N A H C U B H T F

ARNBERGER  
BONE  
BUCHAN  
CROSS  
DE NEEF

DONALD  
GRACE  
HAYS  
KNIGHT  
LAMB

MACRAE  
MUDKAVI  
SMITH  
TOMLINSON  
WEST





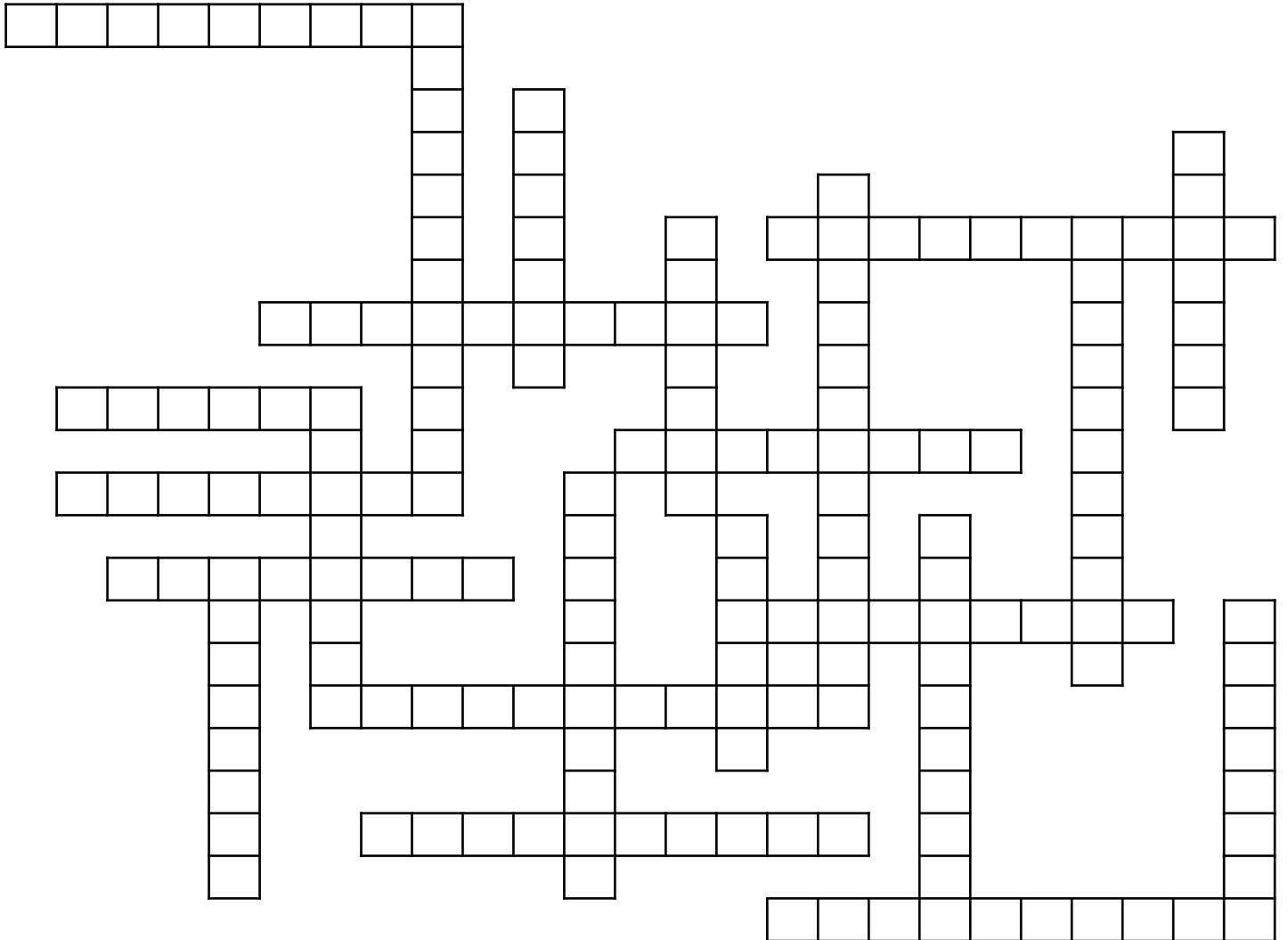
# Colour in this cricket scene



Please send a picture of you with your completed artwork to [Kenny.reid@aberdeenshirecc.org.uk](mailto:Kenny.reid@aberdeenshirecc.org.uk) to see it on our social media pages



# Word Fit Puzzle of Scottish Grounds



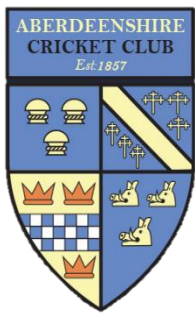
6 –  
LAIRDS  
GRANGE

7 –  
BARNTON  
NUNHOLM  
TITWOOD

8 –  
FORTHILL  
GLENPARK  
LOCHSIDE  
MYRESIDE  
RUBISLAW  
SHAWHOLM

9 –  
ALLAN PARK  
LOCHLANDS  
10 –  
DALNACRAIG  
DOOCOT PARK  
GOLDENACRE  
GRANGE LOAN  
INVERLEITH  
MANNOFIELD

11 –  
MEIKLERIGGS  
PEOPLES PARK  
12 –  
SCROGGIE PARK  
13 –  
COUNTESSWELLS



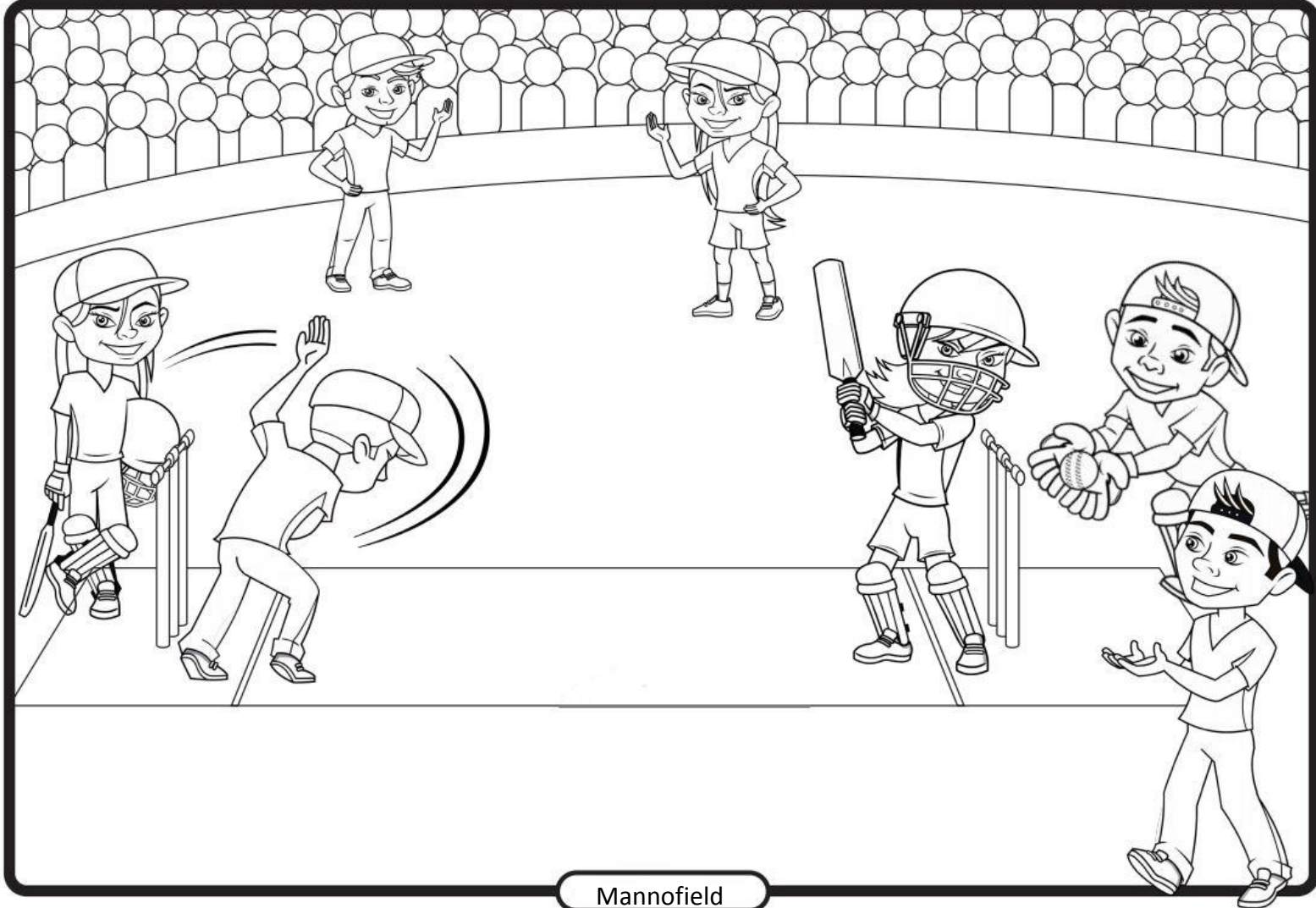
# Match the Scottish Clubs and Grounds

LAIRDS	<input type="radio"/>	<input type="radio"/>	ABERDEENSHIRE
RAEBURN PLACE	<input type="radio"/>	<input type="radio"/>	ARBROATH
BARNTON	<input type="radio"/>	<input type="radio"/>	CARLTON
NUNHOLM	<input type="radio"/>	<input type="radio"/>	CLYDESDALE
TITWOOD	<input type="radio"/>	<input type="radio"/>	CORSTORPHINE
FORTHILL	<input type="radio"/>	<input type="radio"/>	CULTS
GLENPARK	<input type="radio"/>	<input type="radio"/>	DUMFRIES
LOCHSIDE	<input type="radio"/>	<input type="radio"/>	DUNDEE HIGH
MYRESIDE	<input type="radio"/>	<input type="radio"/>	FALKLAND
RUBISLAW	<input type="radio"/>	<input type="radio"/>	FERGUSLIE
SHAWHOLM	<input type="radio"/>	<input type="radio"/>	FORFARSHIRE
ALLAN PARK	<input type="radio"/>	<input type="radio"/>	GORDONIANS
LOCHLANDS	<input type="radio"/>	<input type="radio"/>	GRAMMAR FPS
DALNACRAIG	<input type="radio"/>	<input type="radio"/>	GRANGE
DOO'COT PARK	<input type="radio"/>	<input type="radio"/>	GREENOCK
GOLDENACRE	<input type="radio"/>	<input type="radio"/>	HERIOTS
GRANGE LOAN	<input type="radio"/>	<input type="radio"/>	METHLICK
INVERLEITH	<input type="radio"/>	<input type="radio"/>	PERTH DOO'COT
MANNOFIELD	<input type="radio"/>	<input type="radio"/>	POLOC
MEIKLERIGGS	<input type="radio"/>	<input type="radio"/>	SMRH
PEOPLES PARK	<input type="radio"/>	<input type="radio"/>	STRATHMORE
SCROGGIE PARK	<input type="radio"/>	<input type="radio"/>	STONEYWOOD-DYCE
COUNTESSWELLS	<input type="radio"/>	<input type="radio"/>	WATSONIANS





# Colour in this cricket scene



Mannofield

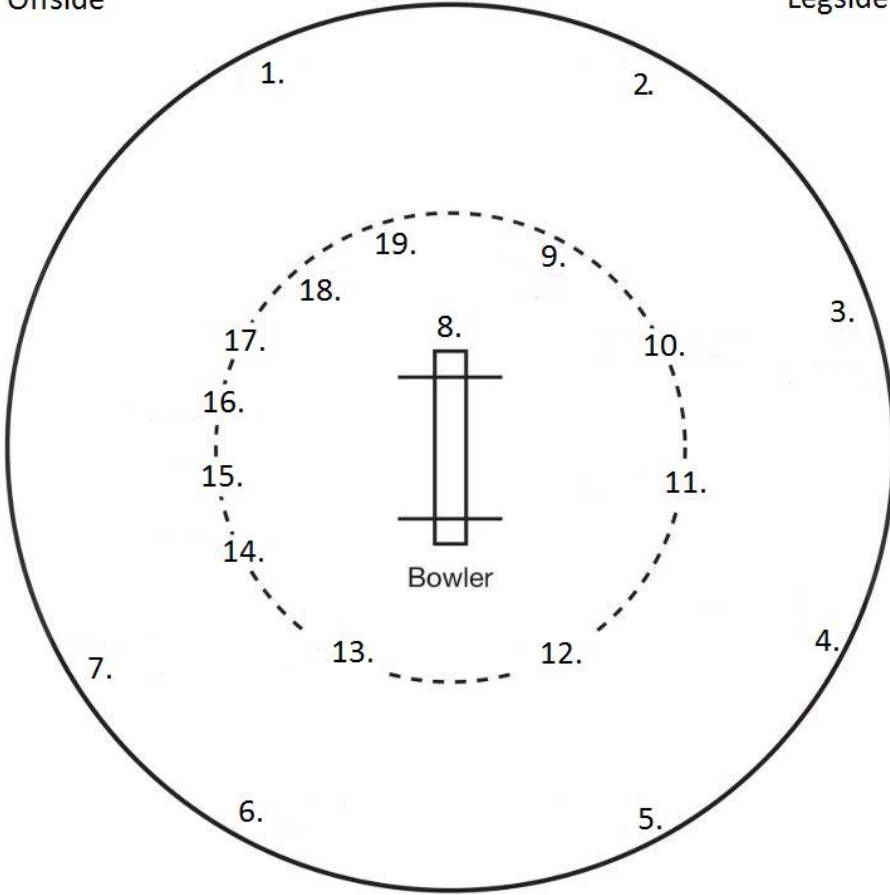
Please send a picture of you with your completed artwork to [Kenny.reid@aberdeenshirecc.org.uk](mailto:Kenny.reid@aberdeenshirecc.org.uk) to see it on our social media pages



# Can you match up the fielding positions with the numbers

Offside

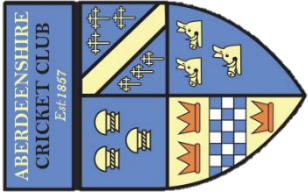
Legside



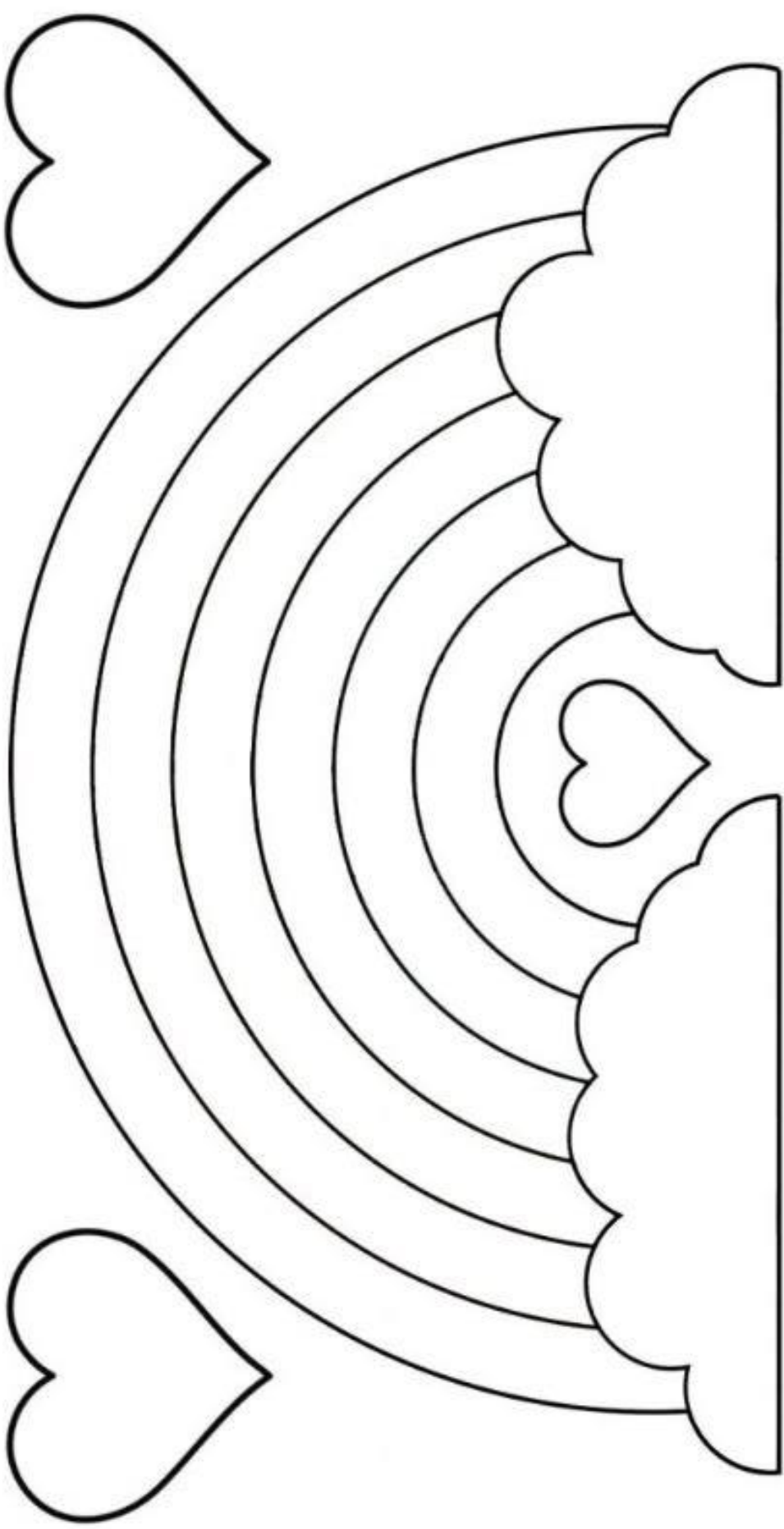
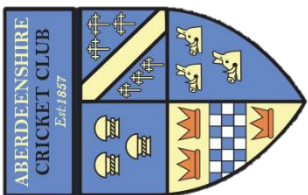
1. \_\_\_\_\_
2. \_\_\_\_\_
3. \_\_\_\_\_
4. \_\_\_\_\_
5. \_\_\_\_\_
6. \_\_\_\_\_
7. \_\_\_\_\_
8. \_\_\_\_\_
9. \_\_\_\_\_
10. \_\_\_\_\_
11. \_\_\_\_\_
12. \_\_\_\_\_
13. \_\_\_\_\_
14. \_\_\_\_\_
15. \_\_\_\_\_
16. \_\_\_\_\_
17. \_\_\_\_\_
18. \_\_\_\_\_
19. \_\_\_\_\_

- Cover Point
- Wicket Keeper
- Deep Square Leg
- Third Man
- Gully
- Mid Wicket
- Long On
- Extra Cover
- Mid Off
- Short Fine Leg

- Deep Cover
- Long Off
- Deep Mid Wicket
- Point
- Slips
- Cover
- Fine Leg
- Square Leg
- Long On



THANK YOU NHS



Please send a picture of your completed artwork to [Kenny.reid@aberdeenshirecc.org.uk](mailto:Kenny.reid@aberdeenshirecc.org.uk) to see it on our social media pages