



Lingfield Football Club
Official Matchday Programme
2015/16



v Ringmer FC
02. 04. 16
SCFL Division One



Southern Combination
Football League

42 DESIGNS
antscott7@hotmail.co.uk

the LINGERS



Respect

tarana 

42



Proud to support Lingfield FC

Award winning
matchday programme producer

*Official designer and editor of
Lingfield FC Matchday Programme*

42 DESIGNS
antscott7@hotmail.co.uk

07769 114476

442 Designs,
Llandilo, Old Lane,
Crowborough,
East Sussex,
TN6 2AF

macron[®]
store
/Hastings

**Official Sponsors of
The Southern Combination
Football League**

*South Coast's leading supplier
of Macron Sportswear*

**Football kits
Training Wear
Match Day Wear
& Equipment**

tel : 01424 852225

hastings@macronstore.com
www.macronstorehastings.com

TODAY'S TEAMS



TODAY'S OFFICIALS

REFEREE
STEVE BAKER
ASSISTANTS
GARY MANVILLE-DICKENS
STEVE HASSETT

TODAY'S FIXTURES

MACRON SCORE SCFL DIVISION ONE

Bexhill United v
Oakwood
Crawley Down Gatwick v
Storrington
Langney Wanderers v
Saltdean United
Lingfield v
Ringmer
Little Common v
Selsey
Mile Oak v
Midhurst & Easebourne
Sidlesham v
Haywards Heath Town
Steyping Town v
Southwick

JORDAN JENNER

TJ STEAD

MATTHEW GATES

CONRAE CESPEDES

MATTHEW BURROUGHS

CONNOR LEECH

JAMES WILLIAMS

HARRY BANKS

STEPHEN SMITH

DAN FRITH

SAM COCKERILL

DECLAN SMITH

JAKE CONNARIS

BRANDON DELLAWAY

JAKE HORN

JAMES WILLIAMS

KERRAN BOYLAN

DAVID HEATON

THOMAS BETTS

ANDREW CORRIGAN

ANDREW HALES

HARRISON BURLEY

BEN THOMSETT

CONNOR SMITH

STEPHEN JACKSON

NANA BAAH

TONY REID

TERRY PAYNE

AARON WATSON

THOMAS CYPRIEN

ROBBIE FROST

MARK BURT

GARETH DONNELLY

SURREY COUNTY FA VETERANS COUNTY CUP THE FINAL



www.surreyfa.com

 @surreyfa

LINGFIELD VETERANS VS MANOR ATHLETIC

WEDNESDAY 27TH APRIL 2016
KICK OFF - 7:30pm

MOLESEY FOOTBALL CLUB, 412 WALTON ROAD
WEST MOLESEY. KT8 2JG

TICKETS: £5 ADULTS | £3 UNDER 15's & CONCESSIONS

HEADLINE SPONSOR:



PLAYER OF THE MATCH AWARD

SPONSORED BY:





LINGERS ACTION



2-1



05. 03. 16

SCFL DIVISION ONE

Despite rainy conditions the Lingers overcame both Steyping Town and the elements to triumph 2-1

It was a strong start from the home side as we piled forwards, creating chance after chance but never quite being able to put the ball away. The abysmal conditions were at times a struggle to play in but we still managed to impose ourselves on the game confidently.

However, it would be Steyping that struck first as their giant centre back was left unmarked at the corner and powered in a header to put the away team one up with their first real chance of the match.

Despite this setback it didn't take long for the Lingers to rally and strike back, with Matthew Burroughs's nice piece of skill and small sprinkling of luck helping him weave through the defence and slot the ball into the bottom right for the equaliser.

With the scores tied we continued to press them, and a good cross from Con-






nor Leech allowed Burroughs to turn provider for Sam Cockerill, who buried a rebound for the lead going into half time.


The second half was a much less eventful one, with the horrid weather taking its toll on play.

Matthew Burroughs continued to cause trouble and almost scored a terrific volley from range, but the keeper denied him at the last second.

At the other end Jordan Jenner produced a cracking save to deny another header and a handful more to maintain our lead and hand us the well-deserved three points.

By Sam Freebody

DATE	OPPOSITION	COMP.	F-A	ATT					
08 AUG	LANGNEY WANDERERS	A SCFL 1	3-2	75	Smith	Tuck	Kuffour	Cespedes 1	C
11 AUG	OAKWOOD	A SCFL 1	1-1	44	Smith	Tuck	Stead	Killick	C
14 AUG	CANTERBURY CITY	H FAC EP	0-3	145	Reid	Tuck	Stead	Killick	C
22 AUG	SALTDEAN UNITED	A SCFL 1	3-0	20	J-Freeman	Tuck	Stead	Cespedes	C
29 AUG	HASSOCKS	A PBLC 2	1-5	0	Taggart	Tuck	Stead	Cespedes	Gr
31 AUG	HAYWARDS HEATH TOWN	A SCFL 1	1-6	86	Smith	Tuck	Stead	Gates	Gr
05 SEP	STORRINGTON	A SCFL 1	2-3	62	Reid	Tuck	Stead	Gates 1	Ce
12 SEP	STORRINGTON	H SCFL 1	1-4	64	Reid	Tuck	Stead	Gates 1	Gr
19 SEP	SIDLESHAM	A SCFL 1	6-0	34	Jenner	Leech	Stead	Gates	Ce
22 SEP	MIDHURST & EASEBOURNE	H SCFL 1	6-0	35	Jenner	Leech	Stead	Gates 1	Ce
26 SEP	SOUTHWICK	H SCFL 1	0-1	41	Jenner	Leech	Gates	Harman	Gr
03 OCT	CORINTHIAN	A FAV Q2	0-4	63	Jenner	Leech	Stead	Gates	Ce
10 OCT	BEXHILL UNITED	H SCFL 1	4-2	62	Jenner	Leech	Tuck	Smith	Ce
17 OCT	SEAFORD TOWN	H SCFL 1	2-0	33	Jenner	Leech	Tuck	Gates	Ce
20 OCT	OAKWOOD	A D1LC 2	5-3	55	Jenner	Tuck	Leech	Gates	S
24 OCT	LITTLE COMMON	A SCFL 1	1-5	68	Jenner	Tuck	Leech	Gates	Ce
31 OCT	SOUTHWICK	A SCFL 1	2-0	19	Jenner	Tuck	Leech	Gates 1	Ce
07 NOV	OAKWOOD	H SCFL 1	1-4	24	Smith	Burroughs	Leech	Gates	C
21 NOV	SELSEY	H SCFL 1	1-1	30	Conteh	Tuck	Leech	Smith	Ce
28 NOV	MIDHURST & EASEBOURNE	A SCFL 1	0-2	26	Conteh	Tuck	Gates	Cespedes	L
05 DEC	SEAFORD TOWN	A SCFL 1	1-0	18	Jenner	Leech	Smith	Gates	'
42732	CRAWLEY DOWN GATWICK	A SCFL 1	4-6	104	Jenner	Tuck	Gates	Smith	L
16 JAN	BEXHILL UNITED	A SCFL 1	0-1	84	Jenner	Leech	Smith	Langridge	S
06 FEB	SALTDEAN UNITED	H SCFL 1	7-3	38	Jenner	Stead 1	Dowrick	Gates	L
20 FEB	RINGMER	A SCFL 1	2-0	43	Jenner	Stead	Smith	Gates 1	L
27 FEB	LITTLE COMMON	H SCFL 1	3-0	35	Jenner	Stead	Gates	Smith	L
05 MAR	STEYNING TOWN	H SCFL 1	2-1	23	Jenner	Stead	Dowrick	Gates	L
12 MAR	MILE OAK	H SCFL 1	1-3	32	Jenner	Stead	Smith	Gates	L
26 MAR	SELSEY	A SCFL 1	1-3	73	Reid	Leech	Gates	Dallaway	'
02 APR	RINGMER	H SCFL 1							
09 APR	SIDLESHAM	H SCFL 1							
13 APR	MILE OAK	A D1LC 3							
16 APR	HAYWARDS HEATH TOWN	H SCFL 1							
19 APR	LANGNEY WANDERERS	H SCFL 1							
23 APR	STEYNING TOWN	A SCFL 1							
30 APR	MILE OAK	A SCFL 1							
TBC	CRAWLEY DOWN GATWICK	H SCFL 1							

							USED SUBSTITUTES
Gates	Burroughs	Frith 1	Clements	Taylor	Cockerill	Zola 1	Stead, Connaris
Gates	Burroughs	Cockerill	Smith	Atkinson	Taylor	Zola 1	Clements, Kuffour, Summerfield
Gates	Burroughs	Frith	Cockerill	Taylor	Boylan	Richards	Clements, Graveney
Frith	Burroughs	Gates 1	Atkinson	Taylor	Boylan	Richards 2	Graveney, Connaris, Smith
Graveney	Banks	Summerfield 1	Burroughs	Smith	Boylan	Richards	Curtis, Lugard, Kuffour
Graveney	Banks	Frith	Burroughs 1	Smith	Summerfield	Boylan	Curtis, Leech
Cespedes	Banks 1	Frith	Burroughs	Smith	Cockerill	Richards	Lugard, Leech, Summerfield
Graveney	Connaris	Burroughs	Smith	Cockerill	Taylor	Boylan	Richards, Leech, Cespedes
Cespedes	Banks 1	Frith	Londono 1	Cockerill 1	Smith 1	Boylan	Burroughs 1, Tuck, Connaris 1
Cespedes	Banks	Burroughs	Smith	Cockerill 1	Londono 1	Boylan 3	Taylor, Tuck, Connaris
Graveney	Banks	Burroughs	Smith	Cockerill	Londono	Richards	Taylor, Tuck, Clements
Cespedes	Connaris	Burroughs	Smith	Cockerill	Londono	Gyurses	Graveney, Tuck, Taylor
Cespedes	Gates	Cockerill	Burroughs	Mitev 1	Harrison 1	Londono 1	Atkinson 1, Connaris
Cespedes	Londono	Burroughs 1	Smith	Atkinson	Harrison	Gyurses	Boylan 1, Connaris, Taylor
Smith	Londono 1	Gyurses 1	Cockerill	Burroughs	Harrison 1	Boylan 2	Banks, Connaris, Taylor
Cespedes	Londono	Gyurses	Cockerill	Burroughs	Atkinson	Boylan 1	Connaris, Graveney
Cespedes	Smith	Kendirci	Taylor	Burroughs	Atkinson	Boylan 1	Harrison, Kuffour, Gyurses
Dean	Londono	Kendirci	Taylor	Cockerill	Atkinson	Boylan 1	Harrison, Cespedes, Connaris
Cespedes	Gates	Burroughs	Cockerill	Boylan 1	Londono	Mitev	Horn, Banks, Langridge
Leech	Banks	Burroughs	Horn	Smith	Connaris	Kendarci	Iles, Langridge
Tuck	Burroughs	Cockerill	Horn	Connaris 1	Kendarci	Boylan	Smith, Mitev
Leech	Horn	Heaton 1	Clements	Boylan 2	Smith 1	Burroughs	Stead, Banks, Shanny
Stead	Burroughs	Cockerill	Heaton	Connaris	Smith	Boylan	Shanny, Horn, Gates
Leech	Burroughs	Cockerill 2	Heaton	Williams	Smith	Boylan 2	Dallaway, Horn 1, Connaris
Leech	Burroughs 1	Cockerill	Heaton	Horn	Williams	Boylan	Connaris, Davies, Trout
Leech	Williams	Cockerill	Burroughs 1	Smith 2	Heaton	Boylan	Horn, Connaris, Dowrick
Leech	Burroughs 1	Cockerill 1	Heaton	Smith	Williams	Boylan	Connaris, Horn
Leech	Burroughs	Heaton	Cockerill	Williams	Smith	Boylan 1	Horn, Dowrick
Tuck	Burroughs	Heaton	Smith	Connaris	Boylan 1	Caiger	White

SCFL DIV. ONE



		P	W	D	L	F	A	GD	PTS
1	HAYWARDS HEATH TOWN	27	26	0	1	109	19	90	78
2	CRAWLEY DOWN GATWICK	26	19	2	5	76	43	33	59
3	STORRINGTON	28	17	3	8	61	40	21	54
4	MILE OAK	26	16	3	7	54	35	19	51
5	OAKWOOD	26	15	3	8	80	51	29	48
6	SOUTHWICK	26	13	3	10	60	46	14	42
7	LITTLE COMMON	26	12	2	12	59	52	7	38
8	LINGFIELD	25	12	2	11	55	48	7	38
9	STEYNING TOWN	25	10	3	12	41	53	-12	33
10	LANGNEY WANDERERS	23	9	4	10	48	42	6	31
11	SELSEY	25	9	3	13	46	70	-24	30
12	BEXHILL UNITED	27	8	5	14	44	58	-14	29
13	SIDLESHAM	25	9	1	15	41	64	-23	28
14	RINGMER	27	7	6	14	37	59	-22	27
15	MIDHURST & EASEBOURNE	26	6	5	15	29	51	-22	23
16	SEAFORD TOWN	29	4	4	21	18	60	-42	16
17	SALTDEAN UNITED	27	2	7	18	28	95	-67	13

MONDAY 28 MARCH 2016

MACRON STORE DIVISION TWO

Langney W'ders	P-P	Ringmer
Lingfield	P-P	Crawley Down G
Little Common	3-1	Bexhill United
Midhurst & Ease	P-P	Oakwood
Mile Oak	0-4	Haywards Heath
Saltdean United	1-1	Seaford Town
Sidlesham	4-1	Selsey

MONDAY 28 MARCH 2016

MACRON STORE DIVISION TWO

Bexhill United	V	Oakwood
Crawley Down G	V	Storrington
Langney W'ders	V	Saltdean United
Lingfield	V	Ringmer
Little Common	V	Selsey
Mile Oak	V	Midhurst & Ease
Sidlesham	V	Haywards Heath
Steyning Town	V	Southwick



THE VISITORS

Formed in 1905 when records show that the first secretary of the club was Mr A.E.Cosham of High St, Ringmer and the club colours were black and amber. Prior to WW1, the club joined the Lewes & District League and, after reforming following the conflict, RFC secured its first ever trophy – the Sussex Junior Cup of 1926 – the colours had now changed to Dark and Light Blue.

At the conclusion of WW2, the clubs home ground was the Anchor field – Sth East of the Anchor Inn which served as the clubs headquarters. The pitch was still a working field which meant the goalposts had to be dismantled after each game. More problematic, though, was the fact that cows owned by Mr Craig left their mark and had to be cleared before every match!

In 1951 Ringmer joined the Brighton League and began to climb the divisions, in 1963, Ringmer was accepted into the Sussex County League. Within three seasons, the Blues had sealed third spot in Div 2 and in 1967 they also lifted the Div 2 Invitation Cup. During this period, facilities at the club were improving thanks to land provided by the Pitts family and building was started on changing rooms. A prefabricated building was purchased from the old Croydon Airfield and The Caburn as we know it today took shape.

Promotion to Div 1 as Champions in 1968/69. After finishing sixth in the debut season, we then embarked on the greatest 12 months in the club's history. In the F.A. Cup for the first time in 1970/71 it became the first village side to reach the First Round Proper. 1500 supporters trekked up to Colchester to witness a brave 3-0 defeat - a result made all the more creditable by Colchester's later humbling of the then mighty Leeds Utd in one of the all-time great cup upsets. Under the helm of schoolteacher boss Pat Francis, Ringmer went on to claim the County League Championship for the first and only time. The bulk of the side remained together for the 1972/73 season which saw them finish runners-up in the League and creating another club first by lifting the Sussex Senior Cup.

However, a period of sustained mediocrity set in culminating in relegation to Div 2 - a second successive rele-

gation as only averted by two points. Fortunes soon took an upturn when, under the stewardship of Rodney Ralfe, the Blues regained their top flight status in 1988/89. Since then Ringmer have remained in Div 1 but silverware has been a little harder to come by.

Ringmer lost the RUR Cup final of 1991/92 but collected the now defunct Sussex Express Cup in 1995. Two years later, Gary Allen's Blues managed fifth place in the League. Two turbulent seasons followed with the club fortunate to avoid relegation before the appointment of Glen Geard for the new millennium sparked a turnaround. 2001/02 proved the most successful for 30 years, the club finishing runners-up in the League and League Cup. Following a couple of mid-table campaigns.

Another former Albion professional, John Crumplin, took on the managerial hot seat for the 2004/05 season. An early success saw the club hit the headlines with its record 10-0 win in the FA Vase. Other cup success followed a first victory in the RUR Cup Final but a losing appearance in the Sussex Senior Cup. Leading the table for much of the 2005/06 season the Blues faded to finish in 2nd place but failed to secure promotion. John stepped down to be replaced by Steve Johnson for the 2006/07 season in which the Blues did well to finish in 9th spot after starting with only one player remaining from the previous season. The 2007/08 season saw them slip to 10th spot and were losing finalists in the league Cup. The 2008/09 season saw another change as with no budget, Steve resigned to be replaced by the successful Reserve management team, Bob Munnery and Steve Oliver. A good season for the new squad of youngsters many in their first year of 1st division football, sadly their brilliant efforts to get a 6th place finished was marred as a 10 point penalty received for the club going into administration and near total collapse, dropping them to 10th. The 2009/10 the Blues finished 13th, a season full of up's and down's as the club fought to survive off the field,. A fresh start for the new 10/11 season with a new club management team in place and finally being set free of administration the future for the club is looking brighter. 09/10 to 11/12 have seen the Blues finishing in the mid-table. Sammy Donnelly managed the 12/13 season with Jason Hopkinson and Paul Daubeney taking the reins for the 13/14

SUPPORT OUR SUPPORTERS



Harry's
Sweet Shop

**A J BELTON
BUILDING
CONTRACTORS**



THE
GREYHOUND



**The
Baguette Bar**

Seven Day
Grocers



1 New Building, Newchapel Street, Lingfield, RH7 6BA
Tel: 01342 832 001

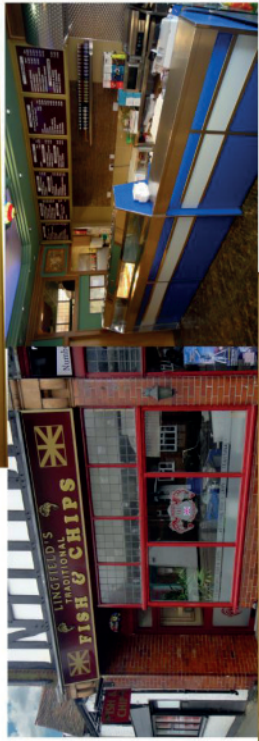
LINGFIELD'S TRADITIONAL FISH & CHIPS

Open Monday to Saturday

We are delighted to provide service to Lingfield community, and to build a communal relationship.

11:30 - 14:00 and 16:30 - 21:00

EXTRAS		MILK DRINKS		CHICKENS	
HONEY	2.00	CHEESE BUNNERS & CO	2.00	CHICKEN SAND SUPPER	3.10
MASTARD	10 Pcs	BUTTER & CUP	2.00	3 INCHES	3.10
BUTTER	2.00	4 SCRAM & CUP	2.00	4 INCHES	3.10
SAUCE	1.00	FRY Cakes & CUP	2.00	5 INCHES	3.10
SHRIMP PRAWNS	1.00	SAUSAGE & COMPS	2.00	6 INCHES	3.10
SHRIMP PRAWNS	3.00	BOTTLE	2.00	7 INCHES	3.10
SHRIMP PRAWNS	3.00	COFFEE	2.00	8 INCHES	3.10
SHRIMP PRAWNS	3.00	COFFEE	2.00	9 INCHES	3.10
SHRIMP PRAWNS	3.00	COFFEE	2.00	10 INCHES	3.10
SHRIMP PRAWNS	3.00	COFFEE	2.00	11 INCHES	3.10
SHRIMP PRAWNS	3.00	COFFEE	2.00	12 INCHES	3.10
SHRIMP PRAWNS	3.00	COFFEE	2.00	13 INCHES	3.10
SHRIMP PRAWNS	3.00	COFFEE	2.00	14 INCHES	3.10
SHRIMP PRAWNS	3.00	COFFEE	2.00	15 INCHES	3.10
SHRIMP PRAWNS	3.00	COFFEE	2.00	16 INCHES	3.10
SHRIMP PRAWNS	3.00	COFFEE	2.00	17 INCHES	3.10
SHRIMP PRAWNS	3.00	COFFEE	2.00	18 INCHES	3.10
SHRIMP PRAWNS	3.00	COFFEE	2.00	19 INCHES	3.10
SHRIMP PRAWNS	3.00	COFFEE	2.00	20 INCHES	3.10



CHIPS		JUST FISH		KEBABS	
Small	2.40	All served with Fresh Lemon	1.50	CHICKEN KEBAB	4.40
Med	2.80	2oz Fried Fish	2.00	SHISH KEBAB	4.80
Large	3.20	3oz Fried Fish	2.50	SPICY CHICK KEBAB	4.80
XL	3.60	4oz Fried Fish	3.00	WEST INDIAN KEBAB	5.10
CHICKEN RATES					
Small	2.40				
Med	2.80				
Large	3.20				
XL	3.60				

We thank all our customers and Lingfield community for a positive hospitality



We are on a journey. Our vision is to make our operation as socially responsible as possible. We believe that we should provide something back to Lingfield community, with your help we are willing to help the community with various support such as our churches and schools.



THE GREYHOUND INN

The Greyhound, the oldest pub in Lingfield has traditional pub food served daily, an excellent selection of Young's Cask ales. There is a relaxing beer garden, darts and also an indoor and outdoor Pool table.

We are situated walking distance for Lingfield Train Station and also have a large car park at the rear.



The Greyhound, Plaistow Street, Lingfield, RH7 6AU
Tel: 01342 832 147

tarana



Proud Sponsors of Lingfield FC

*44 - 50 High Street, Lingfield, RH7 6AA
01342 83 22 22 taranalingfield.co.uk*