



Lingfield Football Club
Official Matchday Programme
2015/16



v Selsey
21. 11. 15



Southern Combination
Football League

42 DESIGNS
antscott7@hotmail.co.uk

the LINGERS



Respect

tarana 

macron® store

/Hastings

**Official Sponsors of
The Southern Combination
Football League**

*South Coast's leading supplier
of Macron Sportswear*

**Football kits
Training Wear
Match Day Wear
& Equipment**

tel : 01424 852225

hastings@macronstore.com
www.macronstorehastings.com



Proud to support Lingfield FC

lingfieldfc



Award winning

matchday programme producer

*Official designer and editor of
Lingfield FC Matchday Programme*

442 DESIGNS
anscott7@hotmail.co.uk

07769 114476

442 Designs,
Llandilo, Old Lane,
Crowborough,
East Sussex,
TN6 2AF

TODAY'S TEAMS



TODAY'S OFFICIALS
 REFEREE
 ALEX BRADLEY
 ASSISTANTS
 CHRIS MacINNES
 GRAEME BOLTON

CONNEL REID	<input type="checkbox"/>	<input type="checkbox"/>	WARREN BOYT
JORDAN JENNER	<input type="checkbox"/>	<input type="checkbox"/>	HOWARD LOW
TJ STEAD	<input type="checkbox"/>	<input type="checkbox"/>	BEN MEREDITH
CONRAE CESPEDES	<input type="checkbox"/>	<input type="checkbox"/>	JAKE LINTOTT
MATTHEW GATES	<input type="checkbox"/>	<input type="checkbox"/>	KIERAN GILBERT
JOE GRAVENEY	<input type="checkbox"/>	<input type="checkbox"/>	JAMES KILHAMS
ROMAINE ATKINSON	<input type="checkbox"/>	<input type="checkbox"/>	CAMERON CORRELL
CONNOR LEECH	<input type="checkbox"/>	<input type="checkbox"/>	JAMES PARSONS
ALFIE TUCK	<input type="checkbox"/>	<input type="checkbox"/>	TOBY LEMPRIERE
HARRY BANKS	<input type="checkbox"/>	<input type="checkbox"/>	BEN MEPHAM
MATTHEW BURROUGHS	<input type="checkbox"/>	<input type="checkbox"/>	RYAN MOREY
DAN FRITH	<input type="checkbox"/>	<input type="checkbox"/>	JAKE JACKSON
SAM COCKERILL	<input type="checkbox"/>	<input type="checkbox"/>	ELLIOTT COURTMAN
CHRISTIAN LONDONO	<input type="checkbox"/>	<input type="checkbox"/>	DAVID ROUGH
DECLAN SMITH	<input type="checkbox"/>	<input type="checkbox"/>	BEN DINES
OTIS TAYLOR	<input type="checkbox"/>	<input type="checkbox"/>	KOFI SLATER
JAKE CONNARIS	<input type="checkbox"/>		
DOMINIC LUGARD	<input type="checkbox"/>		
CONNOR SUMMERFIELD	<input type="checkbox"/>		
AYDEN AMJ RICHARDS	<input type="checkbox"/>		
KERRAN BOYLAN	<input type="checkbox"/>		
<input type="text"/>	<input type="checkbox"/>		
<input type="text"/>	<input type="checkbox"/>		
<input type="text"/>	<input type="checkbox"/>		

TODAY'S FIXTURES

MACRON SCORE SCFL DIVISION ONE

- Crawley Down Gatwick v Bexhill United
- Lingfield v Selsey
- Little Common v Langney Wanderers
- Midhurst & Easebourne v Southwick
- Saltdean United v Ringmer
- Sidlesham v Seaford Town
- Storrington v Mile Oak



SCFL ROUND UP

Horsham are the new leaders at the top of the Premier Division table after winning at previous leaders Newhaven.

The top two met at the Trafalgar Ground, where Terry Dodd gave visitors Horsham the lead five minutes before half time – only for Ryan Knight to draw the Dockers level before the break.

However, it was the Hornets who pressed on to win all three points after Ashley Jones and Kieron Pamment strikes gave Dom Di Paola's side a 3-1 win.

Fifth welcomed third at Nyetimber Lane, where Pagham hosted Eastbourne Town, in a match where the elements played their part, the Lions went 2-0 up at the break after goals from Julian Boniface and Lloyd Rowlatt. However, Town fought back to earn a point with Aaron Capon and Dan Bolwell on target to draw 2-2.

At the other end of the table, East Preston overcame St. Francis Rangers as the bottom two met at The Lashmar. Dan Huet scored twice, with Craig Rennie also on target in a 3-0 win – EP's first win of the season.

Horsham YMCA and Loxwood remain sixth and seventh after both recorded resounding wins. Loxwood stunned third place Lancing after a 4-0 win at Culver Road. Sam Beard and Charlie Pitcher both scored twice for the Magpies in a comfortable win for Mark Beard's men.

YM, meanwhile, saw off Shoreham at Goring's Mead by the same scoreline. Sam Schaaf, Dean Wright, Dave Brown and then Dan Evans got on the score sheet for Peter Buckland's men in the 4-0 win.

Elsewhere, Hassocks halted Littlehampton's recent good form at the Beacon after an entertaining draw. Michael Death put the Robins ahead, but they went into the break 2-1 down after George Landais and Peter Beadle goals saw Littlehampton go in front by half time. The Golds remained in front until ten minutes from time, until Jonno Melia equalised for Hassocks to make it 2-2.

Eastbourne United's recent good run also came to an end when Chichester City left the Oval with all three points. Josh Clack scored twice for Chi after Dan Hegarty opened the scoring in a 3-1 win for Miles Rutherford's side.

In the Division's other game, Ollie Moore scored twice for Broadbridge Heath in a 2-0 win at home to Worthing United.

The wet weather meant only three Division One matches went ahead – with Haywards Heath up to fourth, with several games in hand on those above them, after victory over Midhurst. Phil Johnson scored twice for Heath – his first goals since his arrival from Burgess Hill – with Rob O'Toole, Josh Bryant and Max Miller also on target for Shaun Saunders' side.

Oakwood stay third after a resounding win at Storrington. Aiden Cawte scored twice, with Mark Bevan also on target as the Oaks went into half time three goals up, before Gerald Manville made it 4-0 in the second half.

Little Common saw off a stubborn Selsey side to move up to seventh in the league. Jake Lintott cancelled out Lewis Hole's opener as the Blues looked to earn a point at their High Street Ground home, but Common ensured the long trip west was worthwhile – with Jared Lusted on target to win the game, 2-1, for Russell Eldridge's men.



LINGERS ACTION



1-4



07. 11. 15

SCFL DIVISION ONE

A dominative midfield display wasn't enough as the Lingers lost out to Oakwood.

The game started with a touching display of Remembrance as captain Sam Cockerill laid a wreath of poppies in the centre circle and lead the teams in a minutes silence. The sides also wore poppies on their kits as a mark of respect to those who gave their lives.

Lingfield dominated in the opening stretches and indeed for a lot of the game, and it took less than 10 minutes for Kerran Boylan to tap in the first goal thanks to good work from Romaine Atkinson. Unfortunately, just a few minutes later it was even again as a fast Oakwood counter met the on-rushing Daniel Smith, leading to the ball flicking into the air wildly and landing in the back of the home net.

The rest of the half followed a similar pattern with the Lingers enjoying large periods of chances and possession, and the visitors occasionally looking dangerous on the counter. Despite this, just 15 minutes into the second half it was

the away side that took the lead, as their number 9 headed in at the near post. You could count the number of genuine Oakwood chances on one hand and yet just moments later they had a third, as Daniel Smith's scuffed clearance in the wet allowed Oakwood to cross and tap in again.

Insult was added to injury as Christian Londoño, arguably Lingfield's best creator in the second half had to limp off injured 20 minutes from the end. Oakwood's confidence swelled and they began to create more and in the fourth minute of extra time the away number 7 (whose presence on the pitch was dubious considering some of the challenges he'd made throughout the game) found himself through. He calmly rolled in the fourth and final goal, leaving the Lingers feeling very hard done by indeed.

By Sam Freebody

SCFL DIV. ONE



		P	W	D	L	F	A	GD	PTS
1	STORRINGTON	15	10	1	4	37	25	12	31
2	CRAWLEY DOWN GATWICK	12	10	0	2	37	17	20	30
3	OAKWOOD	15	9	2	4	50	30	20	29
4	HAYWARDS HEATH TOWN	10	9	0	1	39	10	29	27
5	LANGNEY WANDERERS	11	8	1	2	32	10	22	25
6	LINGFIELD	14	7	1	6	33	28	5	22
7	LITTLE COMMON	13	6	2	5	29	26	3	20
8	SOUTHWICK	11	6	1	4	26	16	10	19
9	BEXHILL UNITED	12	5	3	4	25	29	-4	18
10	MILE OAK	11	5	2	4	23	19	4	17
11	RINGMER	15	4	4	7	21	31	-10	16
12	STEYNING TOWN	10	3	2	5	19	23	-4	11
13	SELSEY	12	3	1	8	16	35	-19	10
14	MIDHURST & EASEBOURNE	14	2	3	9	13	30	-17	9
15	SIDLESHAM	10	3	0	7	13	32	-19	9
16	SEAFORD TOWN	13	2	0	11	5	29	-24	6
17	SALTDEAN UNITED	14	1	3	10	15	43	-28	6

SATURDAY 14 NOVEMBER

MACRON STORE SCFL DIVISION ONE

Haywards Heath	5-0	Midhurst & Ease
Selsey	1-2	Little Common
Storrington	0-4	Oakwood

SATURDAY 21 NOVEMBER

MACRON STORE SCFL DIVISION ONE

Crawley Down G	V	Bexhill United
Lingfield	V	Selsey
Little Common	V	Langney W'ders
Midhurst & Ease	V	Southwick
Saltdean United	V	Ringmer
Sidlesham	V	Seaford Town
Storrington	V	Mile Oak



THE VISITORS



Selsey Football Club was formed in 1903 and played at various grounds before setting up home at the High Street Ground in the late 1940s. Selsey were a formidable force in the West Sussex Football League and dominated the league in the 1950s. Their record in the West Sussex Football League before applying for promotion to the Sussex County Football League was the envy of many around. They won Division One on six occasions in 1937/38, 1954/55, 1956/57, 1957/58, 1958/59 and 1960/61, together with the Malcolm Simmonds Memorial Cup on four occasions in 1955/56, 1956/57, 1957/58 and 1958/59. They also added the Sussex County FA Intermediate Cup trophy to their haul in 1958/59. Selsey made the step up to the Sussex County League in 1961 and made an immediate impact on Division Two when finishing runners-up to champions Shoreham in their first season. The competition was abandoned due to bad weather the following year, but Selsey gained promotion to Division One in 1963/64, ending the season as champions and were also winners of the Division Two Invitation Cup. The club remained in the top division for five years before being relegated in 1969. The highlight of their early existence in the County scene was when they appeared at the Goldstone Ground, Brighton and were narrowly beaten by

Eastbourne Utd 1-0 in the Sussex Senior Cup in season 1962/63. A return to the top flight was achieved in season 1975/76, again as champions, but within two seasons the club once again found itself back in Division Two. They then endured a further nine seasons in the lower division until they gained promotion back to Division One for the third time in 1986/87, as runners-up to Pagham. Their two chances of cup glory during that time came in 1984/85 when they were runners up in the Division Two Cup losing to local rivals Chichester City 2-1 and in 1986/87 when they were eventual winners. Once back in Division One Selsey managed to survive for four seasons, until finishing bottom in 1991 with just 12 points. Following two seasons of rebuilding and re-structuring, and with Danny Hinshelwood back in charge after a short spell away, the 2005/06 period saw Selsey back to something like their best when they gained promotion back to Division One, thus maintaining their reputation as one of the County League's yo-yo clubs. It was not surprising that Selsey's best home gate of the season (248) came against local rivals Pagham, but what was completely bizarre was the fact that the lowest attendance at the High Street Ground (88) was for the visit of Sidlesham, easily their closest neighbours with less than three miles separating the two clubs! Back in the top division for 2006/07, Selsey comfortably maintained their position with an 8th place finish and again posted amongst the best attendances in the League, bettered only by champions Eastbourne Town and Three Bridges. The 2014-15 Season proved to be a very difficult time for the Club. The first team struggled in the league and never looked like holding onto their position in Division One. They ended the season in bottom place with only eleven points to their name which meant relegation to the newly formed Southern Combination Football League.

SUPPORT OUR SUPPORTERS



Clemlec Ltd



Harry's
Sweet Shop

**A J BELTON
BUILDING
CONTRACTORS**



THE
GREYHOUND

**TUBULAR
SCAFFOLDING LTD**



**The
Baguette Bar**

Seven Day
Grocers



1 New Building, Newchapel Street, Lingfield, RH7 6BA
Tel: 01342 832 001

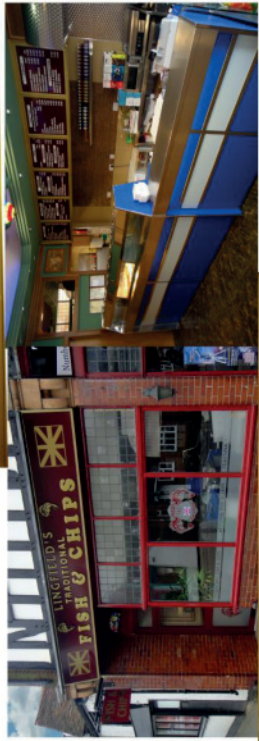
LINGFIELD'S TRADITIONAL FISH & CHIPS

Open Monday to Saturday

We are delighted to provide service to Lingfield community, and to build a communal relationship.

11:30 - 14:00 and 16:30 - 21:00

EXTRAS		MILK DRINKS		CHICKENS	
HONEY	2.00	CHEESE BUNNERS & CO	2.00	CHICKEN SAND SUPPER	3.10
MADE	10 P40	CHOCOLATE	2.00	3 INDOORS	3.10
BUTTER BULL	2.00	4 SCRAMBLED EGGS	2.00	4 INDOORS	3.10
SAUCE	1.00	FRY CHICKEN	2.00	5 INDOORS	3.10
COMFY SAUCE	1.00	FISH Cakes & Chips	2.00	6 INDOORS	3.10
SHRIMP PAN	3.00	SAUSAGE & COMPS	2.00	7 INDOORS	3.10
SHRIMP PAN	3.00	WELLINGTON	2.00	8 INDOORS	3.10
SHRIMP PAN	3.00	BOTTLE	2.00	9 INDOORS	3.10
SHRIMP PAN	3.00	COFFEE	2.00	10 INDOORS	3.10
SHRIMP PAN	3.00	COFFEE	2.00	11 INDOORS	3.10
SHRIMP PAN	3.00	COFFEE	2.00	12 INDOORS	3.10
SHRIMP PAN	3.00	COFFEE	2.00	13 INDOORS	3.10
SHRIMP PAN	3.00	COFFEE	2.00	14 INDOORS	3.10
SHRIMP PAN	3.00	COFFEE	2.00	15 INDOORS	3.10
SHRIMP PAN	3.00	COFFEE	2.00	16 INDOORS	3.10
SHRIMP PAN	3.00	COFFEE	2.00	17 INDOORS	3.10
SHRIMP PAN	3.00	COFFEE	2.00	18 INDOORS	3.10
SHRIMP PAN	3.00	COFFEE	2.00	19 INDOORS	3.10
SHRIMP PAN	3.00	COFFEE	2.00	20 INDOORS	3.10
SHRIMP PAN	3.00	COFFEE	2.00	21 INDOORS	3.10
SHRIMP PAN	3.00	COFFEE	2.00	22 INDOORS	3.10
SHRIMP PAN	3.00	COFFEE	2.00	23 INDOORS	3.10
SHRIMP PAN	3.00	COFFEE	2.00	24 INDOORS	3.10
SHRIMP PAN	3.00	COFFEE	2.00	25 INDOORS	3.10
SHRIMP PAN	3.00	COFFEE	2.00	26 INDOORS	3.10
SHRIMP PAN	3.00	COFFEE	2.00	27 INDOORS	3.10
SHRIMP PAN	3.00	COFFEE	2.00	28 INDOORS	3.10
SHRIMP PAN	3.00	COFFEE	2.00	29 INDOORS	3.10
SHRIMP PAN	3.00	COFFEE	2.00	30 INDOORS	3.10



We thank all our customers and Lingfield community for a positive hospitality

CHIPS		JUST FISH		KEBABS	
Small	2.40	All served with French Fries	1.50	CHICKEN KEBAB	4.40
Med	2.80	200g Double Fish	2.00	SHISH KEBAB	4.80
Large	3.20	300g Double Fish	2.50	SPICY CHICK KEBAB	4.80
CHIPS	2.40	400g Double Fish	3.00	WEST INDIAN KEBAB	5.10
SMALL	2.40	500g Double Fish	3.50	VEGETARIAN KEBAB	5.10
MED	2.80	600g Double Fish	4.00	CHICKEN & BUN	7.00
LARGE	3.20	700g Double Fish	4.50	SHISH & KOFTE	7.00
CHIPS	2.40	800g Double Fish	5.00		
SMALL	2.40	900g Double Fish	5.50		
MED	2.80	1000g Double Fish	6.00		
LARGE	3.20	1100g Double Fish	6.50		
CHIPS	2.40	1200g Double Fish	7.00		
SMALL	2.40	1300g Double Fish	7.50		
MED	2.80	1400g Double Fish	8.00		
LARGE	3.20	1500g Double Fish	8.50		
CHIPS	2.40	1600g Double Fish	9.00		
SMALL	2.40	1700g Double Fish	9.50		
MED	2.80	1800g Double Fish	10.00		
LARGE	3.20	1900g Double Fish	10.50		
CHIPS	2.40	2000g Double Fish	11.00		
SMALL	2.40	2100g Double Fish	11.50		
MED	2.80	2200g Double Fish	12.00		
LARGE	3.20	2300g Double Fish	12.50		
CHIPS	2.40	2400g Double Fish	13.00		
SMALL	2.40	2500g Double Fish	13.50		
MED	2.80	2600g Double Fish	14.00		
LARGE	3.20	2700g Double Fish	14.50		
CHIPS	2.40	2800g Double Fish	15.00		
SMALL	2.40	2900g Double Fish	15.50		
MED	2.80	3000g Double Fish	16.00		
LARGE	3.20	3100g Double Fish	16.50		
CHIPS	2.40	3200g Double Fish	17.00		
SMALL	2.40	3300g Double Fish	17.50		
MED	2.80	3400g Double Fish	18.00		
LARGE	3.20	3500g Double Fish	18.50		
CHIPS	2.40	3600g Double Fish	19.00		
SMALL	2.40	3700g Double Fish	19.50		
MED	2.80	3800g Double Fish	20.00		
LARGE	3.20	3900g Double Fish	20.50		
CHIPS	2.40	4000g Double Fish	21.00		
SMALL	2.40	4100g Double Fish	21.50		
MED	2.80	4200g Double Fish	22.00		
LARGE	3.20	4300g Double Fish	22.50		
CHIPS	2.40	4400g Double Fish	23.00		
SMALL	2.40	4500g Double Fish	23.50		
MED	2.80	4600g Double Fish	24.00		
LARGE	3.20	4700g Double Fish	24.50		
CHIPS	2.40	4800g Double Fish	25.00		
SMALL	2.40	4900g Double Fish	25.50		
MED	2.80	5000g Double Fish	26.00		
LARGE	3.20	5100g Double Fish	26.50		
CHIPS	2.40	5200g Double Fish	27.00		
SMALL	2.40	5300g Double Fish	27.50		
MED	2.80	5400g Double Fish	28.00		
LARGE	3.20	5500g Double Fish	28.50		
CHIPS	2.40	5600g Double Fish	29.00		
SMALL	2.40	5700g Double Fish	29.50		
MED	2.80	5800g Double Fish	30.00		
LARGE	3.20	5900g Double Fish	30.50		
CHIPS	2.40	6000g Double Fish	31.00		
SMALL	2.40	6100g Double Fish	31.50		
MED	2.80	6200g Double Fish	32.00		
LARGE	3.20	6300g Double Fish	32.50		
CHIPS	2.40	6400g Double Fish	33.00		
SMALL	2.40	6500g Double Fish	33.50		
MED	2.80	6600g Double Fish	34.00		
LARGE	3.20	6700g Double Fish	34.50		
CHIPS	2.40	6800g Double Fish	35.00		
SMALL	2.40	6900g Double Fish	35.50		
MED	2.80	7000g Double Fish	36.00		
LARGE	3.20	7100g Double Fish	36.50		
CHIPS	2.40	7200g Double Fish	37.00		
SMALL	2.40	7300g Double Fish	37.50		
MED	2.80	7400g Double Fish	38.00		
LARGE	3.20	7500g Double Fish	38.50		
CHIPS	2.40	7600g Double Fish	39.00		
SMALL	2.40	7700g Double Fish	39.50		
MED	2.80	7800g Double Fish	40.00		
LARGE	3.20	7900g Double Fish	40.50		
CHIPS	2.40	8000g Double Fish	41.00		
SMALL	2.40	8100g Double Fish	41.50		
MED	2.80	8200g Double Fish	42.00		
LARGE	3.20	8300g Double Fish	42.50		
CHIPS	2.40	8400g Double Fish	43.00		
SMALL	2.40	8500g Double Fish	43.50		
MED	2.80	8600g Double Fish	44.00		
LARGE	3.20	8700g Double Fish	44.50		
CHIPS	2.40	8800g Double Fish	45.00		
SMALL	2.40	8900g Double Fish	45.50		
MED	2.80	9000g Double Fish	46.00		
LARGE	3.20	9100g Double Fish	46.50		
CHIPS	2.40	9200g Double Fish	47.00		
SMALL	2.40	9300g Double Fish	47.50		
MED	2.80	9400g Double Fish	48.00		
LARGE	3.20	9500g Double Fish	48.50		
CHIPS	2.40	9600g Double Fish	49.00		
SMALL	2.40	9700g Double Fish	49.50		
MED	2.80	9800g Double Fish	50.00		
LARGE	3.20	9900g Double Fish	50.50		
CHIPS	2.40	10000g Double Fish	51.00		



We are on a journey. Our vision is to make our operation as socially responsible as possible. We believe that we should provide something back to Lingfield community, with your help we are willing to help the community with various support such as our churches and schools.



THE GREYHOUND INN

The Greyhound, the oldest pub in Lingfield has traditional pub food served daily, an excellent selection of Young's Cask ales. There is a relaxing beer garden, darts and also an indoor and outdoor Pool table.

We are situated walking distance for Lingfield Train Station and also have a large car park at the rear.



The Greyhound, Plaistow Street, Lingfield, RH7 6AU
Tel: 01342 832 147

tarana



Proud Sponsors of Lingfield FC

*44 - 50 High Street, Lingfield, RH7 6AA
01342 83 22 22 taranalingfield.co.uk*