

Risk Assessment

Date:	24 TH July 2020					
Assessors Name:	Sue Billings	Reference Number:			Review Date: 1month	Ongoing – as per FA & government guidance updates
Endorsed By:	Ronald Billings	Signature:	<i>Physical signed copy held by club</i>	Position:	Chairman	Date: 24 July 2020
		Coronavirus (COVID-19) – FA / Corinthian Football Club This risk assessment covers all football activity under the authorisation and jurisdiction of Corinthian Football Club. These such activities are: <ul style="list-style-type: none"> • Training sessions carried out with restrictions caused by Covid-19 (Coronavirus) pandemic • Matches carried out with restrictions caused by the Covid-19 (Coronavirus) pandemic. 				
Summary Statement		<p>Corinthian Football Club has a duty of care to protect the safety and welfare of its staff, volunteers, visitors, customers and contractors at all times and must ensure the implementation of safe and effective social distancing and hygiene measures in line with government advice to limit the potential for Covid-19 infection. If at any time the club believes such safety and welfare is potentially compromised it reserves the right to consider cancellation or amendment of any activity while measures are reviewed. All activities will be carried out in line with current government Covid-19 guidelines and are continually reviewed. This risk assessment must be read in conjunction with all other activity and site-specific risk assessments. The following should be read in conjunction with all FA and government guidelines as contained within Appendix B & C.</p>				
Location Details		Corinthian Sports Club, Gay Dawn Farm, Valley Road, Fawkham, Longfield, Kent, DA3 8LY				

Identified Hazards	Who may be affected	Risk Level before control measures S x L = R				Existing control measures	Additional Control measures required	To be actioned by	Completion date	Final Risk level S x L = R			
		S	L	R	RR					S	L	R	RR
Catching / Spreading	Employees, visiting team, public	5	3	15	H	<ul style="list-style-type: none"> • Welfare facilities will contain suitable levels of soap and antibacterial gel. • Employees will be asked to wash hands with soap regularly and thoroughly, for at least 20 seconds. • Tissues will be provided for all employees. Employees should use their tissues when coughing or sneezing and then place the used tissue in the bin before washing hands. 				5	1	5	M

Risk Assessment

						<ul style="list-style-type: none">Contact with personnel suspected of having caught COVID-19 will be avoided.							
--	--	--	--	--	--	---	--	--	--	--	--	--	--

Identified Hazards	Who may be affected	Risk Level before control measures S x L = R				Existing control measures	Additional Control measures required	To be actioned by	Completion date	Final Risk level S x L = R			
		S	L	R	RR					S	L	R	RR
Catching / Spreading (continued)	Employees, visiting team, public	5	3	15	H	<ul style="list-style-type: none">Employees are reminded to not touch their eyes, nose or mouth if their hands are not clean.A cleaning schedule will be implemented throughout the site, ensuring that worksurfaces, door handles, taps etc. are all thoroughly cleaned with an antibacterial cleaning substance.We will also work towards any cleaning / infection control requirements outlined by the government.Employees will be told to self-isolate for 14 days should they find they have a new, persistent cough and/or a high temperature.Should employees disclose that personnel living with them are self-isolating, they should be encouraged to do the same for 14 days as per Government guidance.				5	1	5	M

Risk Assessment

						<ul style="list-style-type: none">The FA documents that have been produced in line with Government guidance, which saw the easing of lockdown restrictions on gatherings, public spaces and outdoor activities and the phased return of outdoor sport and recreation should always be adopted.								
Identified Hazards	Who may be affected	Risk Level before control measures S x L = R				Existing control measures	Additional Control measures required	To be actioned by	Completion date	Final Risk level S x L = R				
		S	L	R	RR					S	L	R	RR	
Employee & Visiting Team travel	Employees, visiting team, public	5	2	10	H	<ul style="list-style-type: none">We will ask employees and the visiting team/supporters to inform us if they are leaving the country.We will provide relevant FA and government guidance in line with the area / country that they are visiting.Self-isolation will be enforced in line with the area / country guidance.	See attached Appendix			5	1	5	M	
Lack of awareness	Employees, visiting team, public	5	3	15	H	<ul style="list-style-type: none">The latest government and FA campaign posters will be displayed in the entrance lobby areas and in suitable places around the stadium.Toolbox talks will be carried out for all personnel on site, warning them of the risks posed by the virus as well as the control measures outlined in this assessment and from FA and government guidance. This will include informing personnel of the known symptoms.We will continually adopt and review new FA/ government / WHO guidance as and when it is available.				5	1	5	M	

Risk Assessment

Identified Hazards	Who may be affected	Risk Level before control measures S x L = R				Existing control measures	Additional Control measures required	To be actioned by	Completion date	Final Risk level S x L = R			
		S	L	R	RR					S	L	R	RR
Visitor Parking	Employees, visiting team, public	5	3	15	H	<ul style="list-style-type: none"> Provide unrestricted parking to staff and visitors in the stadium footprint which offers adequate space for all vehicles to be parked at safe distances apart. EMU's to continue to direct the parking at Corinthian's and once the car park is full ensure the car park is CLOSED to all. 	<p>If visitor numbers increase, consider parking signage.</p> <p>If visitor parking numbers exceed capacity a drop off system shall be adopted only.</p>	CHAIRMAN, SECRETARY & DIRECTORS		5	1	5	M
Entry & Exit to Main Stadium	Employees, visiting team, public	5	3	15	H	<ul style="list-style-type: none"> The latest government and FA campaign posters will be displayed in the entrance lobby areas and in suitable places around the stadium. Every game shall be made all ticket to ensure that track and trace can be adopted should any employee, visiting team or member of public contract the virus. Entry will be via the turnstiles with each ticket holder given a specific time of entry at 2min intervals (max 4people per ticketing party/household) 	<p>Possible reduction in stadium numbers given capacity of 1400</p> <p>If supporters do not adhere to social distancing when asked to then possibility of reducing stadium capacity further</p>	CHAIRMAN, SECRETARY & DIRECTORS		5	1	5	M

Risk Assessment

						<ul style="list-style-type: none"> One way arrows shall designate routes around the stadium however main exits will be the gate adjacent the turnstile and main building exit to car park. At all times the gates shall be held open to avoid cross contamination. 						
--	--	--	--	--	--	---	--	--	--	--	--	--

Identified Hazards	Who may be affected	Risk Level before control measures S x L = R				Existing control measures	Additional Control measures required	To be actioned by	Completion date	Final Risk level S x L = R			
		S	L	R	RR					S	L	R	RR
Entry Exit to Corinthian Bar and bar area setup	Employees, visiting team, public	5	3	15	H	<ul style="list-style-type: none"> The Corinthian Bar is located at first floor level so should be accessed via the main staircase, and left via the members bar staircase, at all times social distancing measures shall be in place such as: <ul style="list-style-type: none"> One-way system in Bar Area One up one down system and signage within the lobby to the main staircase – see Appendix A .Tape and paint must be put down to clearly mark out a one-way walkway. Signs also put up to indicate the direction to follow.'Entrance only' and 'Exit only' signs will be placed in the appropriate positions, i.e. by the front door and side gate. Main Bar to be a one person serving system with 1mtr mark on flooring designating positioning Although contactless payment is preferable and limits risk of 	<p>If visitor numbers increase, consider capping stadium numbers.</p> <p>See Appendix</p>	CHAIRMAN & DIRECTORS		5	1	5	M

Risk Assessment

Entry Exit to Gallery Bar and bar area setup (continued)						<p>cross-contamination as much as possible, customers will still come into contact with the card machine, therefore it will be wiped down with antibacterial spray and disposable blue roll after each transaction.</p> <p>Likewise, the till is to be wiped down frequently, especially after any cash transactions. It is important that the till is cleaned down properly before a staff switchover. All locations are to be wiped down frequently with antibacterial spray and disposable blue roll.</p>								
Identified Hazards	Who may be affected	Risk Level before control measures S x L = R				Existing control measures	Additional Control measures required	To be actioned by	Completion date	Final Risk level S x L = R				
		S	L	R	RR					S	L	R	RR	
		S	L	R	RR					S	L	R	RR	

Risk Assessment

All Toilet Areas – external and internal	Employees, visiting team, public	5	3	15	H	<ul style="list-style-type: none"> There are 2 toilet areas within the stadium as shown in Appendix A (WC) . Staff will check and clean the toilets regularly. Antibacterial soap will be placed in the toilets for customers and there will be a hand sanitiser dispenser outside each of the toilets. Doors will be kept open where possible to reduce the need for customers to touch handles by pushing or pulling them open, however staff will frequently wipe handles down with antibacterial spray and disposable blue roll to reduce risk. Children are to be supervised by an adult at all times – Signage to be erected externally to stadium to raise awareness EMU's to monitor toilets throughout the period of time supporters are within the stadium 	<p>If visitor numbers increase, consider capping stadium numbers.</p> <p>See Appendix B FA guidelines that will need to be acknowledged if parents do not supervise their children at the stadium.</p>	CHAIRMAN & DIRECTORS		5	1	5	M
Identified Hazards	Who may be affected	Risk Level before control measures S x L = R				Existing control measures	Additional Control measures required	To be actioned by	Completion date	Final Risk level S x L = R			
		S	L	R	RR					S	L	R	RR

Risk Assessment

All Dressing Room Areas	Employees & visiting team	5	4	20	VH	<ul style="list-style-type: none"> The dressing rooms and additional dressing room areas are shown in Appendix A which clearly show designated access routes to follow. Staff will check and clean the dressing rooms regularly. Antibacterial soap will be placed in the toilets for players/staff and there will be a hand sanitiser dispenser inside the dressing room overall area as shown in Appendix .A Doors will be kept open where possible to reduce the need for players to touch handles by pushing or pulling them open, however wipes will be available to enable coaches/visiting management to frequently wipe handles down with antibacterial wipes to reduce risk. No Children are allowed within the dressing room area at any time. Dressing room area to be used minimally by visiting and home team – propose 5players change every 10mins and then stand outside dressing room area socially distanced within tunnel and adjacent area. Prior to kick off and at half time numbers in the dressing room shall be kept to a minimum – max 11players and 2 managers/coaches. At full time the team shall leave the field of play via the tunnel area and have the post match meeting with minimum numbers as above. In 	Additional changing area available to away team	CHAIRMAN & DIRECTORS		5	1	5	M
All Dressing Room Areas (continued)													

Risk Assessment

[illegible]

Identified Hazards	Who may be affected	Risk Level before control measures S x L = R				Existing control measures	Additional Control measures required	To be actioned by	Completion date	Final Risk level S x L = R			
		S	L	R	RR					S	L	R	RR
Track & Trace Visitors	Employees, visiting team, public	5	3	15	H	<ul style="list-style-type: none"> Customers will be asked to write down their details when purchasing their online tickets ONLY to assist with the Government's Track and Trace initiative. The details will be filed confidentially in a dated folder for at least 21 days. Customers will repeat this procedure each time they visit Corinthian Sports Club Visiting Teams will be asked to submit all visiting players and officials details 3 days prior to the fixture. 	Ensure Employee documentation is available for track and trace	CHAIRMAN & DIRECTORS		5	1	5	M

Risk Assessment

						<ul style="list-style-type: none">All employees records working on the day are available via the club website to assist in track and trace.							
Signage on maintaining social distancing	Employees, visiting team, public	5	3	15	H	<ul style="list-style-type: none">Individuals & Groups are expected to adhere to the Government's social distancing policy. If they are not following this rule they will be asked to leave. Signage will be put up around the stadium to remind and prompt people to follow the Government's rules.Children are to be supervised by an adult at all times – Signage to be erected externally to stadium to raise awareness	<p>If visitor numbers increase, consider capping stadium numbers.</p> <p>See Appendix B FA guidelines that will need to be acknowledged if parents do not supervise their children at the stadium.</p>	CHAIRMAN, SECRETARY & DIRECTORS		5	1	5	M

Guidance Notes

SEVERITY	5	5	10	15	20	25
	4	4	8	12	16	20
	3	3	6	9	12	15

Risk Assessment

	2	2	4	6	8	10
	1	1	2	3	4	5
		1	2	3	4	5
	LIKELIHOOD					

LIKELIHOOD	
5	Almost Certain – Very High Risk
4	Probable – High Risk
3	50/50 – Medium Risk
2	Improbable – Low Risk
1	Almost impossible – Low Risk

SEVERITY	
5	Fatality – Very High Risk
4	Severe incapacity – High Risk
3	Absent 3 weeks – Medium Risk
2	Absent less than 1 day – Low Risk
1	Insignificant – Low Risk

1–4 LOW	5–9 MEDIUM	10–15 HIGH	16–25 VERY HIGH
Continue with existing control, however monitor for changes. Implement any additional control measures required, within the timescales given in the risk assessment.	Requires attention to reduce the rating as well as regular ongoing monitoring. Implement any additional control measures required, within the timescales given in the risk assessment.	Requires immediate attention to bring the risk down to an acceptable level. Implement the control measures required, within the timescales given in the risk assessment and continue to review working practices to reduce the probability of an accident to the lowest possible level.	Stop immediately – the risk is too high. Take immediate action to reduce the risk to the lowest level possible.

Risk Assessment

Additional comments:

- 1. This risk assessment needs to be discussed with employees before they operate the plant/equipment to ensure compliance with all control measures through their understanding
- 2. Employees are to sign an acknowledgement sheet for their understanding of this risk assessment
- 3. The risk assessment is to be reviewed on an annual basis, or sooner if changes are made to the plant or working practices, or after an accident/near miss
- 4. This risk assessment must be approved by the nominated person for health and safety before being issued as a live document

Assessor 1 name:	Sue Billings	Signature:	Physical signed copy held by club	Date:	24th July 2020
Assessor 2 name:	Ronald Billings	Signature:	Physical signed copy held by club	Date:	24th July 2020

Risk Assessment

I, the undersigned, have been fully briefed on this risk assessment and other control measures in place to reduce the risk of injury to the lowest possible level. I fully understand my duties as an employee, to follow the control measures in this risk assessment and the method statement.				
Full Name	Description of Visit	Date	Full Name comments/recommendations	Signature

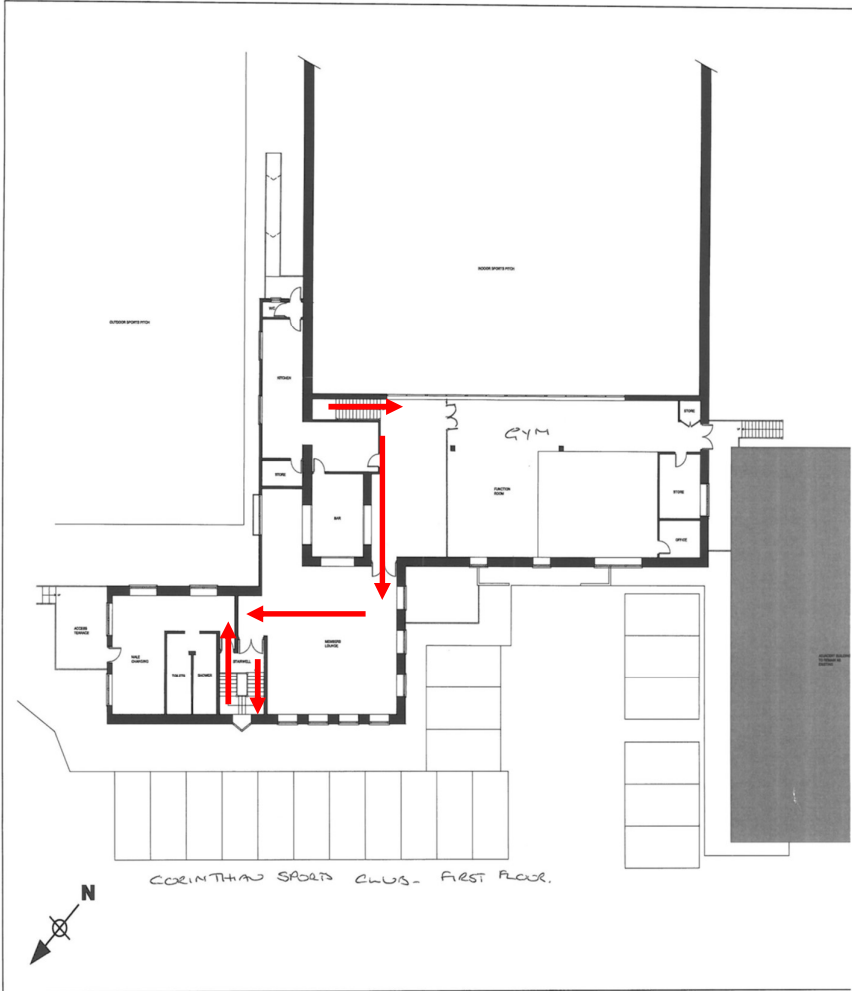
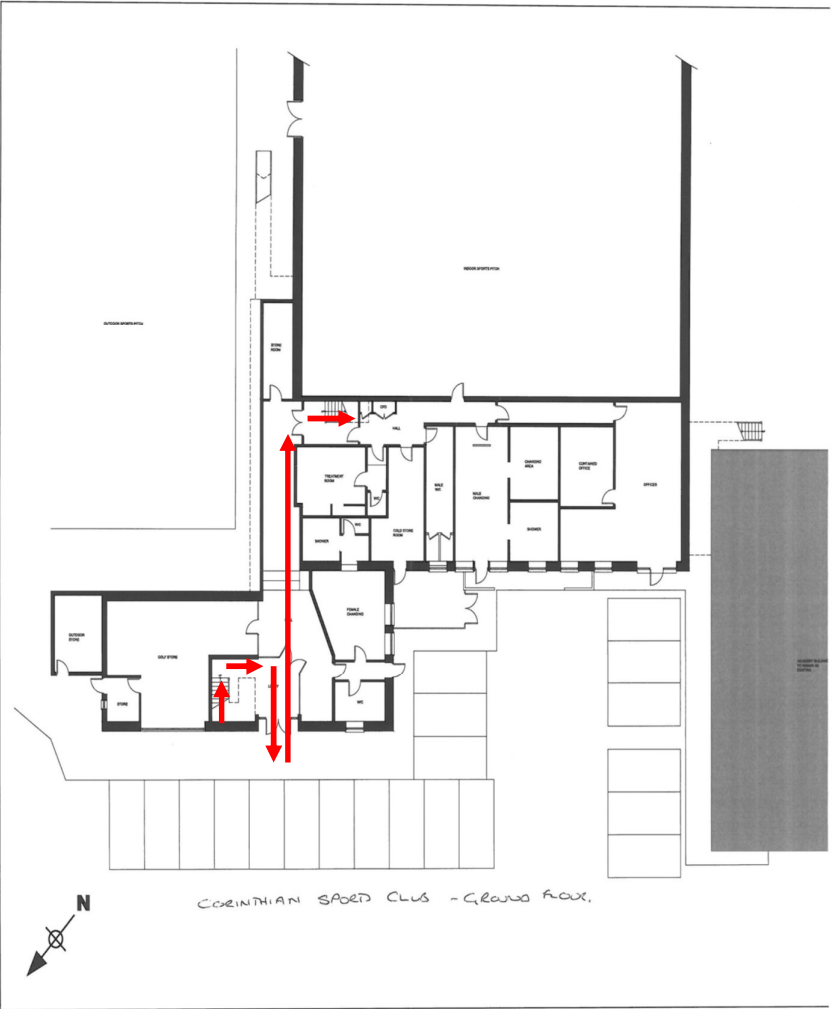
Risk Assessment

Full Name	Description of Visit	Date	Full Name comments/recommendations	Signature

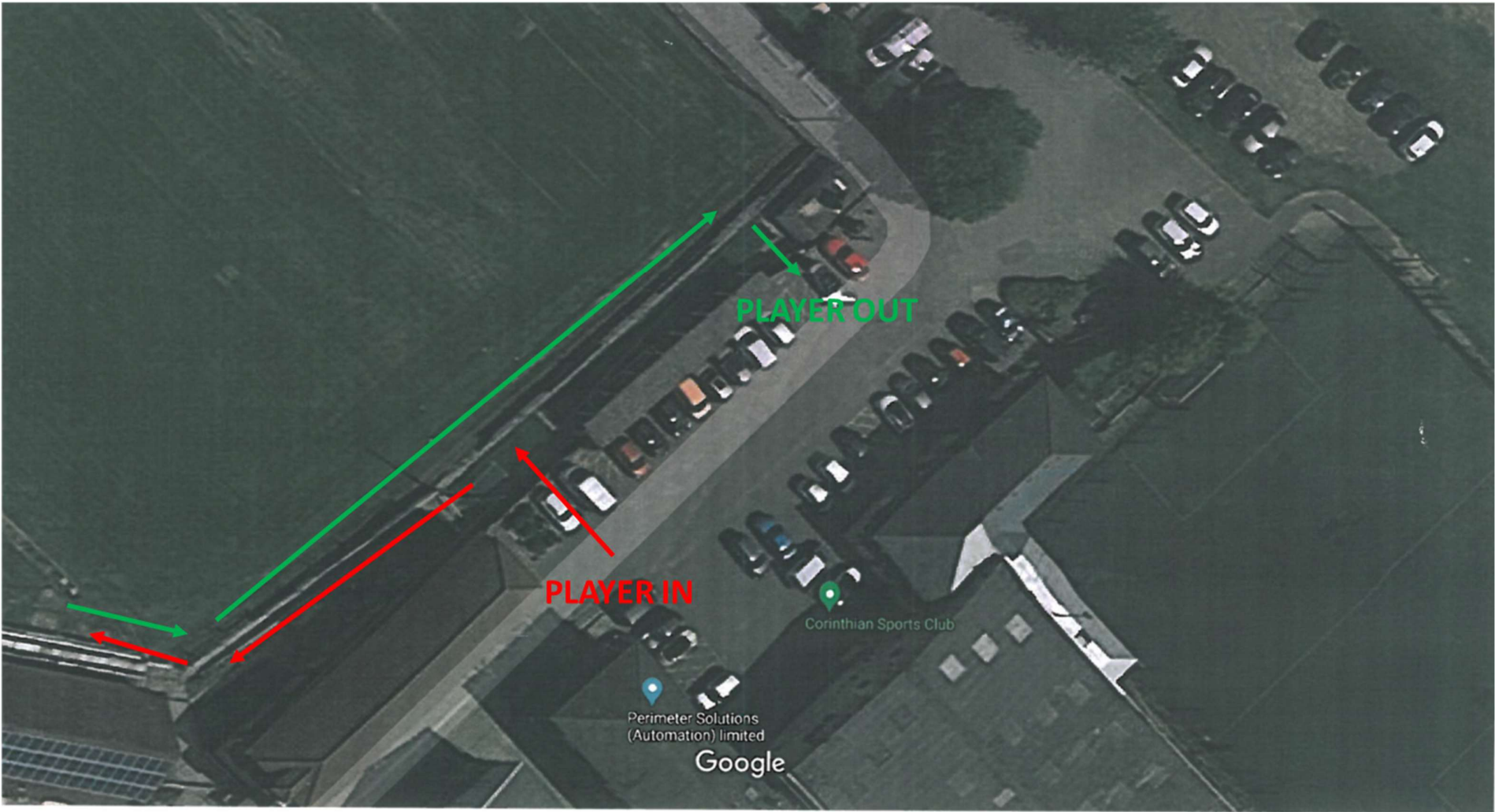
Risk Assessment

APPENDIX A

Drawings showing access routes throughout stadium however floor markings to be followed at all times. 



Risk Assessment



Risk Assessment

APPENDIX B

FA Guidelines.

RE-STARTING OUTDOOR COMPETITIVE GRASSROOTS FOOTBALL – SUMMARY

COVID-19 GUIDANCE



FOR CLUBS, PLAYERS, COACHES, CLUB OFFICIALS, CLUB WELFARE OFFICERS, MATCH OFFICIALS, LEAGUE OFFICIALS, VOLUNTEERS, PARENTS/CARERS SPECTATORS AND FOOTBALL FACILITY PROVIDERS – Published: 18 July 2020

This document outlines actions to be taken before, during and after all competitive grassroots football activity in England. It should be read in conjunction with the latest UK Government Covid-19 guidance available [here](#) and the more detailed guidance document produced by The FA, available [here](#).

In outdoor competitive training and matches, physical contact is now allowed, but for all other activity (e.g. warm-ups/cool-downs) the Government guidance on social distancing should be observed, read [here](#).

Should Government guidance change in response to the current Covid-19 Alert Level, The FA guidance will be updated accordingly.

BEFORE ACTIVITY

- Everyone should self-assess for **Covid-19 symptoms** before every training session or match. If you are symptomatic or living in a household with possible or actual Covid-19 infection you must not participate or attend. You should stay home and follow the latest **Government guidance**.
- Clubs/facility providers should appoint a Covid-19 officer and conduct a thorough **risk assessment** before re-opening or re-starting competitive activity. They should also follow current **'NHS test and trace'** protocols, such as keeping an attendance register.
- Personal hygiene measures should be carried out by everyone and hand sanitisers brought and used at the training/match venue.
- The sharing of kit and equipment should be avoided, but where equipment is shared, it must be cleaned before use by another person.
- Goal posts and corner poles should be wiped down before matches, after matches and at half time.
- Follow Government guidance for travel, including minimising use of public transport.
- Active participants should arrive changed and ready to take part.
- Youth team coaches should re-acquaint themselves with all safeguarding policies and procedures.
- Meet-up times should be adjusted to avoid time spent congregating at a venue.
- Use of clubhouses, hospitality facilities, changing rooms and toilets must adhere to **Government guidance**.

Anyone who is deemed vulnerable in respect of Covid-19 is reminded to follow the Government's guidance, only returning to football when it's right for them to do so.

DURING TRAINING & MATCH PLAY

- Competitive training can take place for all participants, in an outdoor setting provided this takes place in groups of no more than 30 (including coaches).
- Competitive match play is permitted, with social distancing in place before and after the session, and in any breaks in play.
- The sharing of kit and equipment should be avoided and participants should bring their own drinks or refreshments, in named containers.
- When the ball goes out of play, it should not be retrieved by non-participants and should be retrieved using the feet rather than the hands where possible.
- Participants must not spit and should avoid shouting or raising their voices when facing each other, as detailed in The FA Covid-19 Code of Behaviour.
- Set plays: players are encouraged to avoid unnecessarily long set-up or close marking. Other modifications apply to specific situations, such as goal celebrations being discouraged. Read more in The FA's more detailed guidance [here](#).
- Youth football coaches are encouraged to limit persistent close proximity of participants during match play and training.
- Observing rigorous hygiene standards, injuries can be treated. See full guidance [here](#).
- Spectator groups should be limited to six people per group and spread out in line with wider **Government guidance**.
- Match fee payments should be cashless – consider using **The FA Matchday App**.
- Small-sided football should include more regular hygiene breaks in activity and players discouraged from touching or tackling against boards.

AFTER ACTIVITY

- Hands should be washed at the earliest opportunity and personal equipment should be wiped down with a disinfectant.
- Unless absolutely necessary, participants should take their kit home and wash it themselves, or by family members. Post-activity showers should be taken at home.
- Everyone must continue to maintain **social distancing** including in any facilities where groups of people congregate (e.g. clubhouses).
- Everyone should leave following the traffic-flow system the club or facility provider has put place.
- Anyone who becomes infected after training/matches should report this to the **NHS test and trace system**.

DISCLAIMER:

This guidance is for general information only and does not constitute legal advice, nor is it a replacement for such, nor does it replace any Government or PHE advice; nor does it provide any specific commentary or advice on health-related issues. Affected organisations should therefore ensure that they seek independent advice from medical practitioners, or healthcare providers, prior to implementing any re-opening plan, as required. Independent legal advice


should be sought, as required and depending on your, or relevant circumstances. While efforts have been taken to ensure the accuracy of this information at the time of publication, the reader is reminded to check the Government website to obtain the most up-to-date information regarding social distancing and any other Government measures.

THANK YOU! NOW LET'S GET OUR GREAT GAME GOING AGAIN – SAFELY.

Risk Assessment

APPENDIX C

Government Guidelines.



Search

[Home](#)

Coronavirus (COVID-19)

STAY
ALERT

CONTROL
THE VIRUS


SAVE
LIVES

Stay alert

We can all help control the virus if we all stay alert. This means you must:

- stay at home as much as possible
- work from home if you can
- limit contact with other people
- keep your distance from people not in your household (2 metres apart where possible)
- wash your hands regularly

Do not leave home if you or anyone in your household has symptoms.

 [Read more about what you can and cannot do](#)



Do not leave home if you or someone you live with has any of the following:

- a high temperature
- a new, continuous cough
- a loss of, or change to, your sense of smell or taste

[Check the NHS website if you have symptoms](#)