

The Nottinghamshire, Lincolnshire & Derbyshire RFU Society of Referees

Law Changes 2012-13



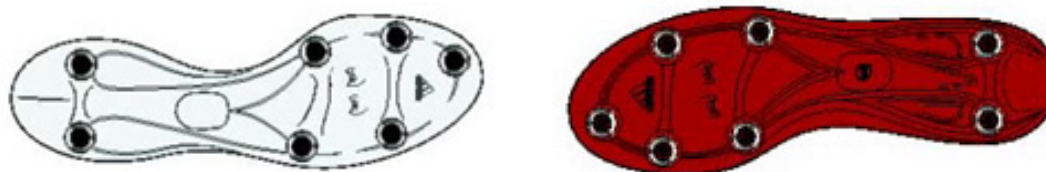
Players Clothing

Add new 4.2 (b):

Female players may wear cotton blend long tights with single inside leg seam under their shorts and socks.

Studs

The sole configuration below was approved for trial (could be any manufacturer)



Kick at Goal after Try

Amend 9.B.1 (e) to read:

The kick must be taken within one minute and thirty seconds (ninety seconds) of a try being scored, even if the ball rolls over and is placed again.

Knock-on or throw forward into to touch

Add new 12.1 (e):

When the ball goes into touch from a knock-on or throw forward, the non-offending team will be offered the choice of a lineout at the point the ball crossed the touch line, or a scrum at the place of the knock-on or throw forward. The non-offending team may exercise this option by taking a quick throw-in.

Ruck

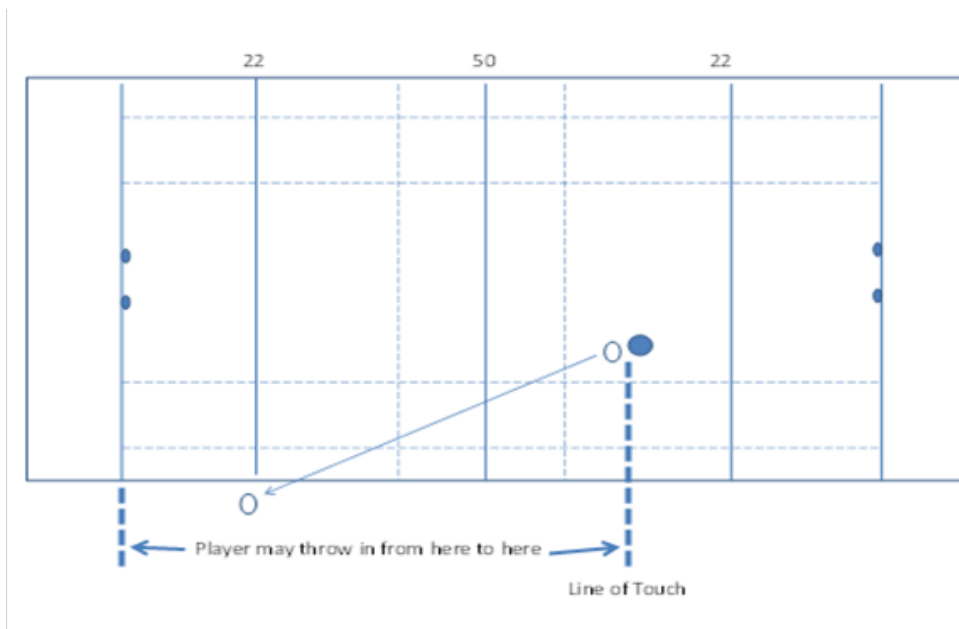
Add new 16.7 (c):

When the ball has been clearly won by a team at a ruck and the ball is available to be played the referee will call "use it" after which the ball must be played within five seconds. If the ball is not played within the five seconds the referee will award a scrum and the team not in possession of the ball at the ruck is awarded the throw-in

Quick Throw-In

Amend 19.2 (b) to read:

For a quick throw-in, the player may be anywhere outside the field of play between the line of touch and the player's goal line.



Scrum Engagement

Amend 20.1 (g) to read:

The referee will call “crouch” then “touch”. The front rows crouch and using their outside arm each prop touches the point of the opposing prop’s outside shoulder. The props then withdraw their arms. The referee will then call “set” when the front rows are ready. The front rows may then engage. The “set” call is not a command but an indication that the front rows may come together when ready.

CROUCH - TOUCH - SET

LINEOUT

Add new 21.4 (b)

Lineout Alternative — A team awarded a penalty or a free kick at a lineout may choose a further lineout, they throw-in. This is in addition to the scrum option.

ENFORCEMENT OF EXISTING LAW

- Ball ripped from a ball carrier is NOT to be considered a knock-on.
- Squeeze ball and the need to ensure the ball is immediately available.

REMEMBER THE FIVE KEY AREAS OF REFEREEING

1. The tackle.
2. Offside at the breakdown.
3. Offside from kicks.
4. Scrum engagement.
5. Formation of the maul.

RFU Clarification – Hand-Off

The hand-off is legal in all rugby from U13's upwards: there was a citing case some time back – which decreed:

- There is no definition of “hand off” in the Laws of the Game.
- A player in possession of the ball is entitled to prevent another player from tackling him by using his hand to push a potential tackler away.
- He may not use his fist, elbow or forearm but may use his open hand.
- He may make contact with any part of the body of the tackler including head and face.
- However, a hand off is a defensive action and must not involve any use of excessive force.
- If a player throws his hand forcefully towards another player to fend him off so that the base or heel of his hand (ie the hard part) makes contact with an opponent's face, then there is a risk of injury to the player who is handed off. Such an action could properly be described as a “hit” or a “strike”.

At U13 it is always encouraged that the hand off is kept away from the face – so as to remove danger and not discourage the smaller player from wanting to be there!

Rolling Substitutions (RFU Regulation 13.5.13-21)

Rolling subs are to be permitted at Levels 5 and below this season.

It is not obligatory for Divisional Organising Committees to adopt rolling subs in their areas but where they do, the key elements are:

In a League Match, each team is permitted to use rolling substitutions of not more than the maximum number of the player interchanges set out below:

Number of Player Replacements	Interchanges
3	8
4	9
5	10
7	12

After Permitted Player Interchanges have been made no other replacements, substitutions or Player Interchanges are permitted for any reason, including injuries.

If a player is injured the team will play with one less player and with uncontested scrums if this involves a front row player and the game cannot continue safely with contested scrums.

Player Interchanges replace the blood bin. If a player has an open wound and has to leave the field, and the team has used all of its Player Interchanges, that player may not be replaced and the team continues with a maximum of 14 players. The player is permitted to return once the wound has been treated and the bleeding stopped, subject to the 15 minute rule set out in IRB Law 3.10(a).

No more than two Player Interchanges per team may occur at any one time and then only during a stoppage in play and with the knowledge of the Referee, who is entitled in his sole opinion to refuse to allow or postpone a Player Interchange if he believes either that the Player Interchange would prevent the opposition from restarting the game quickly, or where a player has been injured, or that it would not be safe for the replacement player who has been previously injured to play in the match.

A player who is a replacement is not entitled to take a kick at goal until a passage of play has taken place since

he has taken the field of play.

A player who suffers two injuries in a match necessitating his being replaced on each occasion is not permitted to act as a replacement following his second injury.

Technical Areas & Security of Pitches

The issues that have arisen over the last season:

- No Technical Areas marked
- Coaches *et al* not staying in Technical Areas — or even by half way line
- Pitches not roped-off

It would appear that Referees are not dealing with the issue & are putting-up with a running commentary/abuse from the Coach patrolling the touchline — causing further problems for the next Referee to visit.

Referees/Advisers/Coaches

Referees — a reminder to be “harder” on the Team Coaches

Referees — please report Coaches/Clubs not complying

Advisers — requested to do similar

NLD Competitions Committee

- We will raise (vigorously) the issues of no marked Technical Areas
- We will raise (vigorously) the issues of Coaches not staying in marked Areas
- We will also raise the issues of non-roped-off pitches

Some thoughts as to how you can manage this issue:

- If there is no Technical Area then the areas between the 10 metre lines should be used in lieu
- If Coaches or others fail to comply with this area then they should initially be warned
- If they continue to fail to comply then the Officials may order them from the playing enclosure
- If they refuse to comply with this instruction then the Officials may abandon the match. (*This almost happened in an L2 match last season where the coach refused to leave the playing area despite repeated instructions from the referee to do so.*)
- Any issues with technical areas or behaviours should be noted in the match card (if one exists) and also reported to the CB that the offending club belongs to.

Finally

If the officials are concerned about safety due to a pitchside area not being acceptably isolated or roped off then they should not start the match until this has been rectified to their satisfaction.