



CAMBERLEY RFC

v SUTTON & EPSOM RFC 17.09.22



**London & SE Division
(Regional 1 South Central)**

Watchetts Recreation Ground, Park Road,
Camberley, Surrey



Welcome to Camberley RFC



Welcome Everyone to our match against Sutton & Epsom RFC.

I am sure that we are all saddened by the loss of our Queen and our thoughts go out to the Royal Family at this time.

There will be a minute's silence before the match today.

We have now sampled the new league playing against two strong sides in Wimbledon at home and Havant away. We had a good victory against Wimbledon but learnt what we are up against last weekend in what was a rather scrappy game with both sides making mistakes on the artificial pitch. Unfortunately for us we came off second best but I am sure we have learnt a lot from that experience, especially how the ball will bounce, not to have loudspeakers and music during the match!

However their hospitality was excellent and I am sure that for our first lunch of the new season and my President's Lunch we will enjoy a great meal. Thank you to Dave Pinto and Simon Maylem for sponsoring the match today.

I have had many good memories of contests between Camberley and Sutton & Epsom over the years and trips to them for coaching courses and county meetings. Players and coaches from Sutton & Epsom that I worked with were Clive Stanley, with whom I coached the County side at U17s and U18s and the scrum half Paul Hodgson, who captained my London Division side in 2001 and went on to captain England U18s, and played for Bristol and London Irish. As I said happy memories.

Enjoy the match, Mike Franzkowiak



Match Sponsors today

Dave Pinto and Simon Maylem

Thank you to Dave and Simon for sponsoring this match. Longtime members of the club, Dave was 1st XV Captain in 1983-84.

(If you want to get information about international tickets, what the sections of the club are up to and for future fixtures and events please visit the club website organised by Matt Searle)

**Match v Wimbledon. Photo by Dinger
(and on front cover)**



CAM DO JUST ENOUGH TO CLAIM FIRST WIN NEW LEAGUE

BY ROGER BERRY

Tough Start for Cam but they work hard to squeeze the win

So on this bright Saturday afternoon rugby restarted with Cam entertaining Wimbledon 1s and 2s but with Watchetts still more brown than green all of the action took place on the 2nd XV pitch.

With the 2s game kicking off proceedings we saw the visitors eventually coming out on top with a 35-5 win. All eyes were then on the main event with the black and ambers faced the Wombles's 1s in the newly created Regional 1 South Central league, which in old money would have been National 3.

This was always going to be a good test for Cam particularly as the visitors had played at this level or above since the 2015 season and so were well versed in what teams need to be successful at Level 5.

In general the visitors were clearly in charge in the first quarter but when they were reduced to 14 following a reckless clothes line tackle by their #15, Cam slowly warmed to the increased pace and intensity required and were in fact leading 25-15 until the 77th minute when a try by the visitors added some 'interest' in the last 3 minutes but the black and ambers managed this well, to claim the win. The first 10 mins of play saw both sides testing each other out until some Cam pressure won them a pen and Liam gratefully claimed the 3 points. Then we saw what you need to succeed at this level as the visitors regained their restart and quickly won a penalty which their 10 placed 5m from the Cam line. From there a perfectly executed driving maul saw them take the lead with an unconverted try and just 12 mins on the clock.

Cam, to their credit hit back almost immediately when a great break by our Fiery Fireman took play into the visitors and a no arms tackle won the black and ambers another pen which Liam slotted to regain the lead.

The next 20 mins or so saw the visitors slowly squeezing Cam both in the tight and at lineout time but huge defence kept the visitors out until they eventually broke through for a converted try and a lead of 6-12 on 30 mins. This massive defensive effort also cost the black and ambers Tom Chennell who looked to have a nasty ankle injury which saw Vic moving from 15 to 9 and the introduction of The Flying Fijian.

Cam certainly upped their tempo from the restart and came close to crossing the whitewash and this pressure eventually told when Vic, with a lovely break race in from almost halfway to bring the score to 11-12 on 37 mins and then almost immediately we saw new boy Gabe flying down the wing for certainly score when the visiting 15, in desperation, stuck out his arm and managed to clothes line the winger which earned him a red card and from the resulting penalty kick, which Liam put to within 5m of the visitors line, after several picks and goes the ball was played wide and there was no stopping our Fireman and with Liam adding the extras the ref blew for half time with Cam leading 18-12.

The second half saw the visitors immediately on the attack and despite another period of great D Cam eventually conceded a penalty which took the score to 18-15 with just 5 mins played in the second half.

We then had a period where both sides struggled to maintain any fluidity and with the visitors playing with 14 the number of injury breaks seemed to increase significantly but Cam now seemed to be managing both the scrums and lineouts much better and on 70 minutes, after several periods of pressure, we saw Woody racing down the touchline to dot down in the corner, and with Liam again adding the extras from the touchline the lead had grown to 10 points with just 10 mins left on the clock. To their credit, the 14 men of Wimbledon did not roll over, and with 3 mins to go they closed the gap with a great lineout drive for another unconverted try but that was going to be the last time the scorer was troubled as Cam coolly closed out the game.

So an excellent start to the new season which will please DoR Risey and new Head Coach Voighty and their coaching group although they will already be planning the workons to be sorted this week in training before another tough challenge at Havant next Saturday. Post match celebrations for a change continued outside in the warm summer sun and it was fun to see Liam winning MoM by the visitors and being awarded DotD by his own team which must be a first time someone wins both in the same game.

Sponsors



RAECON
ELECTRONICS

Electronics
manufacturing
services

Over four decades delivering excellence

PCB Manufacturing PCB Assembly Cable & Harness Manufacture Electromechanical Assembly

With our experience, know-how, and fully equipped facility, Raecon Electronics offers a full electronics manufacturing service. From supplying the bare circuit board right through to building and testing your finished product, we are the perfect one-stop solution.

If your company has a concept that needs to become a reality, a production run that needs to be delivered fast, or if you require low volume or high volume PCB assembly, Raecon Electronics can help.

Call 0850 737 287 | Email: sales@raecon.co.uk | raecon.co.uk



Showcase Creative Ltd.

01276 300151
info@showcasecreative.com
<https://www.showcasecreative.com>
Unit 17 St Georges Industrial Estate
Wilton Road
Camberley
GU15 2QW
United Kingdom

Fixtures & Results to Date

Camberley RFC Fixtures & Results 2022 - 23 Season						Match Sponsor/Information
13/08/2022	Henley Hawks & Nant RFCs	-	Camberley RFC		Friendly	
20/08/2022	Tottonians RFC	-	Camberley RFC		Friendly	
03/09/2022	Camberley RFC	25 - 20	Wimbledon RFC	W	League	SCRUFFS
10/09/2022	Havant RFC	18 - 6	Camberley RFC	L	League	
17/09/2022	Camberley RFC	-	Sutton & Epsom RFC		League	President's Day (Dave Pinto & Simon Maylem)
24/09/2022	Bracknell RFC	-	Camberley RFC		League	
01/10/2022	Camberley RFC	-	Banbury RFC		League	Dave Scott & Stewart Davies
15/10/2022	Camberley RFC	-	Maidenhead RFC		League	The Thursday Touch Training Group
22/10/2022	Brighton RFC	-	Camberley RFC		League	
29/10/2022	Camberley RFC	-	Bournemouth RFC		League	Andy Todd & Rowly Thomas
05/11/2022	London Welsh RFC	-	Camberley RFC		League	
12/11/2022	Camberley RFC	-	Royal Wootton Bassett RFC		League	Denis Fuller & SCRUFFS
26/11/2022	Oxford Quins RFC	-	Camberley RFC		League	
03/12/2022	Camberley RFC	-	Havant RFC		League	Derek & Simon Olsen
10/12/2022	Sutton & Epsom RFC	-	Camberley RFC		League	
17/12/2022	Camberley RFC	-	Bracknell RFC		League	Sean Bradbery/Dave Whitfield & Mike Franzkowiak/John Carpenter
07/01/2023	Banbury RFC	-	Camberley RFC		League	
14/01/2023	Maidenhead RFC	-	Camberley RFC		League	
21/01/2023	Camberley RFC	-	Brighton RFC		League	Howard Ford & Gus Bartlett
28/01/2023	Bournemouth RFC	-	Camberley RFC		League	
04/02/2023	6 Nations	-				England v Scotland
11/02/2023	Camberley RFC	-	London Welsh RFC		League	C. Powell/Smart Cyber Security Ltd.
12/02/2023	6 Nations	-				England v Italy
18/02/2023	Royal Wootton Bassett RFC	-	Camberley RFC		League	
25/02/2023	6 Nations	-				Wales v England
04/03/2023	Camberley RFC	-	Oxford Quins		League	Chris & Harry Gibson
11/03/2023	Wimbledon RFC	-	Camberley RFC		League	England v France (4.45)
18/03/2023	6 Nations	-				Ireland v England
		-				



Havant v Camberley (10th Sept)

Sponsors & Today's Matches

London & SE Division Regional 1 South Central (KO 3.00p.m.)		
1st XV	v	Sutton & Epsom RFC 1st XV

Surrey Premiership League 1 (KO 1.00p.m.)		
2nd XV	v	Sutton & Epsom RFC 2nd XV



P 020 3970 4401

E j.murphy@ovalpeakpartners.com

Oval Peak Partners Limited

www.ovalpeakpartners.com

Little Lyndhurst Pre-School & Reception

Their journey starts here...

- Wrap around care 8am-6pm
- Holiday provision available
- Flexible sessions
- Early Years Grant accepted

Come & visit us

admissions@lyndhurstschool.co.uk



Lyndhurst Prep

Years 1 to 6

A truly individual education...

- Bursaries & Awards available
- Wrap around care 8am-6pm
- Excellent senior school results
- Extra Curricular Activities

Book a tour today

admissions@lyndhurstschool.co.uk



01276 22895
36 The Avenue
Camberley
GU15 3NE
[in](#) [t](#) [i](#) [f](#)

Gold Sponsor



Punjab is the land of Five Rivers and the land of the oldest civilisation in the world 'the Indus valley civilization' . Perhaps, it would be appropriate to call it the Land of Plenty!!

The fertility of its fields and the richness of its dairy have been the envy of the subcontinent.

Punjab is famous for its adventurous, outgoing, eat well-drink well Punjabis. The emphasis has traditionally been on robust food, prepared with the simplest of ingredients and the simplest of basic techniques. Punjab – this side of the border or that – is situated at the crossroads of Silk Route. This allowed the Punjabis – Sikh, Hindu and Muslims – to imbibe diverse culinary influence. They tasted the best of the rest before anyone else on the subcontinent. The proximity with Persia, Afghanistan and Central Asia gave them a taste for fresh and dried fruits and exotic nuts.

Jinney Punjab NahinWekhaya, Au Janamaya Hi Nahin.

“He who has not seen Punjab has not lived at all”

67-69 Park Street, Camberley, Surrey
inquiry@sanjha.co.uk



League Tables

London & SE Division (Regional 1 South Central) League

#	Team	P	W	D	L	PF	PA	+/-	TB	LB	Pts
1	Maidenhead	2	2	0	0	85	31	54	2	0	10
2	Havant	2	2	0	0	44	24	20	1	0	9
3	Oxford Harlequins	2	2	0	0	46	34	12	0	0	8
4	Wimbledon	2	1	0	1	75	51	24	1	1	6
5	Bournemouth	2	1	0	1	62	28	34	1	0	5
6	Bracknell	2	1	0	1	48	43	5	1	0	5
7	Banbury	2	1	0	1	44	48	-4	1	0	5
8	Camberley	2	1	0	1	31	38	-7	0	0	4
9	London Welsh	2	1	0	1	39	68	-29	0	0	4
10	Brighton	2	0	0	2	47	80	-33	1	1	2
11	Sutton & Epsom	2	0	0	2	36	60	-24	0	1	1
12	Royal Wootton Bassett	2	0	0	2	19	71	-52	0	0	0

Surrey Premiership League 1

[illegible]

Camberley RFC 1st XV



P 020 3970 4401

E.j.murphy@ovalpeakpartners.com

Oval Peak Partners Limited

www.ovalpeakpartners.com



Mike Courtness
Match Ball Sponsor

Coaching Staff

Dir of Rugby: Gareth Rise

1st XV Coach - Chris

Laidler

Forwards Coaches -

Michael Clarke, Sam

Voight, Alex Hughes

Backs Coach - Liam

Prescott

Physio - Simon Carr

Manager - Ant Bentham

Press Officer - Roger Berry

Position Sponsors

Simon Olsen
Chris Gibson
Chris Hill
Roger Chamberlain
George Gould
Bruce McLaren
Brian Holland
Stephen Wickens

Gwynne Evans
Harry Fish

Derek Olsen
Bill Murray
Roger Berry
Rusty Smith
Billy White

SCRUFFS

No.

Name

1	Josh Thundercliffe
2	John Murphy
3	Nick Barry
4	Sam Voight
5	Dom Sammut
6	Ben Lovell-Smith
7	Chris Bird (C)
8	Alex Hughes
9	Ally Walton
10	Liam Prescott
11	Gabe Hills
12	Chris Laidler
13	Alex Young
14	Josua Lewanituva
15	Vic Hardwicke
16	Adam Picket
17	Ed Grosvenor
18	Tom Allen

Sutton & Epsom 1st XV



GREENE KING
BURY ST EDMUNDS

*the***PennyGroup**

Position



1.	Tom Boaden	Loose Head Prop
2.	Chris Farrell (C)	Hooker
3.	Luke Halford	Tight Head Prop
4.	George Drye	Lock
5.	Ben Tame	Lock
6.	George London	Blind Side Flanker
7.	Tom Brooker	Open Side Flanker
8.	James Caddy	No. 8
9.	Ross Parsons	Scrum Half
10.	Jamie See	Fly Half
11.	Charlie Aylward	Wing
12.	Freddy Bunting	Centre
13.	Archie Fitzgerald	Centre
14.	Kyren Ghumra	Wing
15.	Sam Hurley	Full Back
16.	Will Lloyd	Substitute
17.	Dan Jones	Substitute
18.	Austin Bell	Substitute

Showcase Creative Ltd.

01276 300151
info@showcasecreative.com
<https://www.showcasecreative.com>
Unit 17 St Georges Industrial Estate
Wilton Road
Camberley
GU15 2QW
United Kingdom

Goddard and Grant
Jewellers Ltd

37 High Street, Frimley, GU16 7HJ
Tel: 01276 21727

You have tried the best
Now try the best

For all your sales, valuations, jewellery, clock and watch repairs

Unbeatable offers on Silver, Jewellery, Trophies and gifts

We guarantee not to be beaten on price or service

OFFICIAL SUPPLIER TO CAMBERLEY RUGBY CLUB

Coaching Staff: Director of Rugby: Andrew Spooner; Coaches: Paul Hodgson and Mark Lambert; Physio: Cherry O'Sullivan; Touch Judge: Danny Williams; Manager: John Croysdill



Pitch Equipment
provided by
The New CoOp
on the Frimley Road



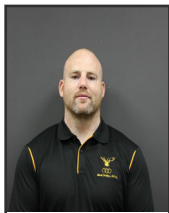
Today's Opposition - Sutton & Epsom RFC

Founded in 1881, Sutton & Epsom is one of the oldest active Rugby Clubs in England with a proud and magnificent history. We first played against Saracens as far back as 1883/84, as one of their very early opponents, and in 1901 beat Stade Francais on their home turf and from its main ground in Rugby Lane, Cheam, remains run by enthusiasts for enthusiasts. We have over 30 teams with 1,200 current and former playing members, plus 1,800 social members. Our playing strength encompasses Under 5s through to Veterans. These are supported by a massive network of RFU qualified coaches, managers and other appointed helpers including a physiotherapy set-up, staffed by two highly qualified experts in sports injuries, which is the envy of many professional clubs.

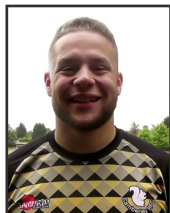
We currently run 6 adult teams for men, headed by the 1st XV. The Club is very positive and forward-looking – we were one of the first to form a squad for adult ladies. This development has been enormously successful, both in terms of their results and in the atmosphere and vibrancy brought to the Club as a whole and we are at the forefront of one of the fastest growing sectors of sport nationally.

We have one of the largest and best run mini and junior rugby sections in the country. The RFU and Sport England have both formally recognised us as quality leaders. We run 60 strong development groups for those at Under 5 and Under 6. Indeed the RFU national guidelines for children of these ages were based upon our approach and that of Ealing RFC. We run similar sized age groups for both boys and girls at each of the Under 7 to Under 12 age groups. At Junior level we run age groups at Under 13 to Under 18 in which these youths are coached to play full 15 man rugby in a competitive league structure. These Surrey Leagues are considered to be one of the best organised in the country and give our lads real opportunity to progress. As a result we are able to bring through a number of potential England players; most recently Patrick O'Grady and Michael Rickner at Under 18 and Michael Ponting at Under 16. Some of these may follow in the footsteps of Paul Hodgson and Alex Mockford who have already gone into the professional ranks. Paul in particular was 1st pick scrum-half at London Irish, and went on to be capped for England. From an early stage we became a partner to NESCOL to promote and assist with the running of their BTEC course. We have appointed a school liaison office and other community-focused people to develop rugby at club and community level. Club members provide regular grass root coaching at a number of schools that have an emerging interest in the sport. We have also provided one of Surrey's two Rugby Development Officers, who spend much of their time with schools and developing clubs. We have for the last few years also staged the Surrey County RFU's development festival for the Under 7 to Under 12 age groups drawn from 18 separate Clubs – a total of over 70 teams.

1st XV Squad



Michael Clarke



Adam Musa



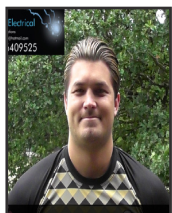
Tom Allen



Nick Barry



Josh Lewanitupa



Josh Watson



Tom Chennell



Chris Bird



George Owen



Ben Lovell-Smith



Matt Smart



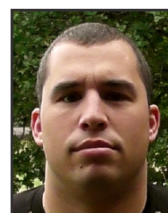
Dom Sammut



Jaid Wiltshire



Sam Voight



Greg Franzel



Liam Prescott



Shawa Rai



Alex Hughes



Connor Diplock



Ed Grosvenor

Silver Sponsor



A **Physiotherapy** and **Sports Injury Clinic**
Also offering Therapeutic and Sports Massage

Proud to support Camberley RFC

Tel: **07859 766590**
www.thephysiocamberley.co.uk



SUPPORTING

Camberley Rugby Club

£50 donation to Camberley Rugby Club

...when you take out a new insurance policy with A-Plan Camberley for the first time. Quote 'Camberley RC'. T&C's apply*

23 High Street, Camberley, GU15 3RB

01276 673 300

A-plan
insurance
a howden company



*Offer available to clients taking out a new policy (minimum premium £200 excluding additional products, optional extras and fees) for the first time with A-Plan. Only available with the above branch. Other exclusions apply. Policy must be on cover for 14 days. Donations will be made on a monthly basis, unless agreed otherwise. This offer cannot be used in conjunction with any other offer. A-Plan reserve the right to change or withdraw this offer at any time. Offer ends 05/10/22. Trustpilot rating correct as of 05/10/21. A-Plan Insurance is a trading style of A-Plan Holdings which is authorised and regulated by the Financial Conduct Authority. Registered office: 2 Des Roches Square, Witney, OX28 4LE. Registration number 750484.

aplan.co.uk/camberley

LACKLUSTER CAMBERLEY LOSE AT HAVANT

by Anthony Bentham

Cambo's first loss in 11 months

Camberley visited Havant on Saturday, and was greeted by a large and noisy crowd from the home side. Roger Berry, our usual reporter was unavailable and probably chose a good match to miss. So Benny has provided us with a short account of a game that probably did not deserve much more.

Before the game both sides lined up for a moments silence and a moments applause for the late Queen Elizabeth II.

Camberley dropped the kick off and were under pressure straight away and this continued for much of the 80 minutes. Havant scored 2 tries and a penalty in the first half with Liam Prescott kicking 2 penalties. HT 13-6.

The Second Half again saw plenty of mistakes from both sides and the only points came in the last 5 minutes when from another wayward Camberley pass, Havant built several phases and scored in the corner.

Camberley will need a good week at training and build up to another tough match, this time against Sutton and Epsom.



Liam Prescott slots over one of two penalties
(photo by Dinger)

Sponsors & Supporters



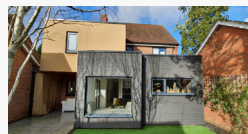
**EXTENSIONS
REFURBISHMENT
NEW BUILD
PROJECT MANAGEMENT**

At HLG we specialise in residential projects in Fleet, Camberley, Farnham and the surrounding areas. Our ethos is simple. Deliver our client's project, on time, on budget and to a high quality.

It sounds simple, but it's something we believe and we have been achieving.

Simon and Tim formed Houghton Lewis with the philosophy to create a building company that gave a superior experience to clients and a reputation to rival those who have been operating for a much longer duration.

At HLG we pride ourselves in the quality of our work, which is a result of the culture we have built within the business. This is replicated across all staff and sub-contractors to create a professional and respectful team.



✉ info@houghtonlewis.co.uk
🌐 www.houghtonlewis.co.uk
f [houghtonlewisgroup](https://www.facebook.com/houghtonlewisgroup)
📷 [@houghtonlewisgroup](https://www.instagram.com/houghtonlewisgroup)
☎ 01252 856858

HOUGHTON LEWIS GROUP
Building Excellence

EXPRESS YOUR INTEREST IN OUR CITY LUNCH WITH GUEST SPEAKER NIGEL OWENS - FRI 18TH NOV 2022



Email our club secretary Nicki Bundock to express your interest:
nicki@camberleyrugbyclub.co.uk This event will sell out quickly! **

One of the best events on our Camberley Rugby calendar, our City Lunch, is taking place on Friday 18th November from 12pm - 5pm in Smith & Wollensky's in Covent Garden. Tickets are £95 per head.

What's our City Lunch?

For those of you who have not attended this event before, it's a really fun day, that kicks off with plenty of G&Ts, followed by a three-course lunch and an auction with some fantastic lots on offer. This year we have managed to secure Nigel Owens as our guest speaker. The feedback from previous years has been great, and the event has built in popularity each time. Monies raised go to our club, benefiting all our members! We will also be making a donation to MIND the Mental Health Charity.

Who's it for?

Our City Lunch is for club members and their families, friends, business contacts and clients who enjoy a great 'corporate' day out.

How to express interest

Email our club secretary Nicki Bundock to express your interest: nicki@camberleyrugbyclub.co.uk You're able to buy between one and ten tickets. Please let Nicki know who you'd like to sit with.

Alternatively, if you would like to book a table (ideally in groups of 10 people) please let Nicki know and she'll arrange for you to be invoiced.

Can you offer an auction prize?

We are also looking for high end auction prizes. At this event we tend to see some really good prizes being auctioned off for great sums of money. If you have, for example, a holiday home, debentures to events, or anything that you think you would happily donate for our City Lunch then please do let Nicki know.

CHARITY QUIZ NIGHT & RAFFLE



Poppy is running the London Marathon for MIND, and needs your help to raise her £2000 target!

Camberley Rugby Club, Watchetts Park
Friday 23rd September
7:30pm

Quiz:

- Teams of 4 to 6
- £10 entry per team
- Prizes for winning team
- Text/email to guarantee your team's entry
(07528532211) (poppylake96@icloud.com)



To Donate go to:
www.justgiving.com
Search: Poppy Lake

- Raffle:
- Local vouchers & prizes
 - Food & Alcohol
 - Cinema vouchers
 - Signed rugby shirt
 - AND MORE!

Plus 'guess her finish time!'



Walk on the Wildside



... a sponsored walk for all the family
Sunday 25th September 2022

Come and join us for a five mile (10,000 steps) walk through the beautiful woodland and wild heathland areas which are part of the Thames Basin Heaths Special Protection Area, to raise money for Surrey Heath Age Concern - a local charity for local people.

We hope each participant will raise £20 through sponsorship

For more information and to register please visit:

www.shac.org.uk



Conate



Surrey Heath Age Concern



ELECI⚡SERVE

E+M

Proudly Sponsor



CAMBERLEY RUGBY FOOTBALL CLUB



Welcome and Thank You to our new sponsors

Changing lives...

Wooden Spoon is the children's charity of rugby.

We fund life-changing projects across the UK and Ireland to support disadvantaged and disabled children.

Our rugby heritage has given us our core values of passion, integrity, teamwork and fun. Working closely with the international rugby community, these values drive the ethos and spirit in everything we do.

Get involved today. Together we can change children's lives through the power of rugby.



Find out more at woodenspoon.org.uk