



# CAMBERLEY RFC

v Bournemouth RFC

29.10.22



**London & SE Division  
(Regional 1 South Central)**  
Watchetts Recreation Ground, Park Road,  
Camberley, Surrey



# Welcome to Camberley RFC



Welcome Everyone  
to our match against Bournemouth RFC.

We were very well looked after by our hosts last weekend at Brighton, including the SCRUFFS Tourists. I had to ask which stretch of water they went across to get there, which I thought was one of the conditions of a SCRUFFS Tour (Maybe the River Wey). Anyway a good time was had in celebrating the Oktoberfest at Brighton. So to snatch victory from the jaws of defeat was unfair on our hosts but if anyone can remember back to the last time we played Brighton, there was a sense of poetic justice.

Congratulations to the 2nd XV for another good win against Brighton, 29 - 10, putting them third in the league. Which is where the 1st team find themselves too.

To complete an action-packed weekend of rugby, I went down to Watchetts on Sunday to watch all the Minis (Kids First) enjoy the CRFC Mini Festival. It was brilliantly run by Jay Wilcox and his team of volunteers and coaches, and a big thank you to Chris Bird for representing the Senior Squads and giving out hundreds of medals to the players.

Enjoy the match today, Mike Franzkowiak (President)



# Match Sponsors today

**A huge thank you to Andy Todd and Rowly Thomas for sponsoring our lunch today.**

**(If you want to get information about our Crowdfunding Scheme, what the sections of the club are up to and for future fixtures and events please visit the club website organised by Matt Searle)**

London & SE Division Regional 1 South Central (KO 3.00p.m.)		
1st XV	v	Bournemouth RFC 1st XV

Surrey Premiership League 1 (KO 2.00p.m.)		
2nd XV	v	Horsham 2nd XV

**Match v Brighton. Photo by Dinger  
(and on front cover)**



# SEASIDE ROBBERY AS CAM CLAIM ANOTHER MAX

## BY ROGER BERRY

Today's visit to Brighton revived memories of the game between the two sides at Watchetts on 13th April 2019 when Cam just needed a draw to see them into the playoffs. In the event The Blues shaded the contest 26-24 scoring 14 points in time added on and subsequently won their playoff to move up to Level 5. So despite being second best for much of the game today I suspect that Cam coming away with 5 points left the Brighton supporters with a similar taste as that experienced by the Watchetts faithful 3 ½ years ago. In the event a very physical and motivated Brighton side must consider themselves a tad unlucky to only claim a single point for their endeavours today when they had held the upper hand for most of the 80 mins. With Cam kicking off into quite a stiff breeze the seashiders soon moved play into the Cam 22 and with just 5 mins on the clock they slotted a simple pen. Now, as in previous games this season Cam came back almost immediately and when Liam turned down a pen which was straight in front of the posts on the Brighton 22, opting instead for the driving lineout, we saw a great catch by Dom followed by a great drive with the massive second row reaching out to dot the ball down and with an excellent conversion by Liam from the touchline the score had moved to 3-7 with barely 8 mins played. We then had a period with both sides trying to establish control and it was the home side to score next with a second pen on 16 mins. Another great hanging restart by Liam soon won the black and ambers a pen and again the decision was to go for the 5m driving maul and it was Hughsey this time who claimed the touch down with the extras again being added by Liam from the touchline with just 20 mins on the clock. For black and amber supporters things just got a whole lot worse for the remainder of the half as poor discipline and tackling saw the home side claim 2 rather soft tries and a pen taking the score to 19-14 when the ref blew for half time.

The second half started with Cam successfully repelling a series of fierce attacks as they held up the Brighton pack over the try line and despite the scrappy nature of things we saw the Fireman execute a perfect 50/22 to establish a good attacking position but Cam were unable to take advantage. However with 25 mins played we saw another Cam penalty push play into the Brighton red zone and this time perfect execution of the lineout drive saw debutant openside Hamish cross for an excellent try and with Liam again adding the extras Cam had crept into the lead 19-21. This only served to motivate the home side yet again as, from the defensive kick from the restart, the Brighton fullback sliced through Cam's paper thin defence to score an outstanding try and even though the conversion was missed the score was now 24-21. The final 10 mins or so saw Cam suddenly move up a gear or so as they realised that the game was slipping away from them while the home side put their bodies on the line big time in an attempt to claim the points. In the end, after a couple of unsuccessful sorties into the Brighton 22 the third visit proved to be fruitful as another great lineout take and drive saw Big Dom claim his second of the afternoon and the tbp and although Liam couldn't add the extras this proved to be the final score of the afternoon as the black and ambers ended proceedings with a tremendous scrum which drove the home side back 5-10 yards at pace just to show what they are capable of. So definitely the better team on the day came second but in the end 5 points when you are not playing well can be considered a good result and not to be sneezed at and also we saw some very good debuts from openside flanker Hamish who, once he had come to terms with the pace of things, had a very good outing and I look forward to his development over the coming weeks while young loose head Finn had 40 mins and really looked the part (holding Clarke up!!) both lads looking really good acquisitions in key roles. However the coaches will really need to alter the mindset of the players going forward if we are to see the side challenging for promotion next March.



**One of our pushover tries !**



---

**Our Mini Festival on Sunday 23rd October  
(more photos to follow in next programme)**



# Fixtures & Results to Date

Camberley RFC Fixtures & Results 2022 - 23 Season						Match Sponsor/Information
13/08/2022	Henley Hawks & Nant RFCs	-	Camberley RFC		Friendly	
20/08/2022	Tottonians RFC	-	Camberley RFC		Friendly	
03/09/2022	Camberley RFC	25 - 20	Wimbledon RFC	W	League	SCRUFFS
10/09/2022	Havant RFC	18 - 6	Camberley RFC	L	League	
17/09/2022	Camberley RFC	43 - 21	Sutton & Epsom RFC	W	League	President's Day (Dave Pinto & Simon Maylem)
24/09/2022	Bracknell RFC	7 - 31	Camberley RFC	W	League	
01/10/2022	Camberley RFC	46 - 17	Banbury RFC	W	League	Dave Scott & Stewart Davies
15/10/2022	Camberley RFC	40 - 15	Maidenhead RFC	W	League	The Thursday Touch Training Group
22/10/2022	Brighton RFC	24 - 26	Camberley RFC	W	League	
29/10/2022	Camberley RFC	-	Bournemouth RFC		League	Andy Todd & Rowly Thomas
05/11/2022	London Welsh RFC	-	Camberley RFC		League	
12/11/2022	Camberley RFC	-	Royal Wootton Bassett RFC		League	Denis Fuller & SCRUFFS
26/11/2022	Oxford Quins RFC	-	Camberley RFC		League	
03/12/2022	Camberley RFC	-	Havant RFC		League	Derek & Simon Olsen
10/12/2022	Sutton & Epsom RFC	-	Camberley RFC		League	
17/12/2022	Camberley RFC	-	Bracknell RFC		League	Sean Bradbery/Dave Whitfield & Mike Franzkowiak/John Carpenter
07/01/2023	Banbury RFC	-	Camberley RFC		League	
14/01/2023	Maidenhead RFC	-	Camberley RFC		League	
21/01/2023	Camberley RFC	-	Brighton RFC		League	Howard Ford & Gus Bartlett
28/01/2023	Bournemouth RFC	-	Camberley RFC		League	
04/02/2023	6 Nations	-				England v Scotland
11/02/2023	Camberley RFC	-	London Welsh RFC		League	C. Powell/Smart Cyber Security Ltd.
12/02/2023	6 Nations	-				England v Italy
18/02/2023	Royal Wootton Bassett RFC	-	Camberley RFC		League	
25/02/2023	6 Nations	-				Wales v England
04/03/2023	Camberley RFC	-	Oxford Quins		League	Chris & Harry Gibson
11/03/2023	Wimbledon RFC	-	Camberley RFC		League	England v France (4.45)
18/03/2023	6 Nations	-				Ireland v England
		-				



Camberley v Maidenhead (15th Oct)

# Fixtures for Women and Juniors

Team	Date	Time	Opposition/Event
Camberley Ladies	30/10/2022	2.30p.m.	Fairford (H) Cup
Senior Academy (U17/18)	30/10/2022	2.00p.m.	Sutton & Epsom (A)
Junior Academy (U16s)	30/10/2022	TBA	Guildfordians (H)
Girls U16s	06/11/2022	11.00a.m.	Inner Warrior
Girls U14s	06/11/2022	10.00a.m.	Inner Warrior
Girls U12s	06/11/2022	10.00a.m.	Inner Warrior
U15s	13/11/2022	12 noon	London Welsh (H) Cup
U14s	13/11/2022	12 noon	Rams (H) Friendly
U13s	13/11/2022	11.45a.m.	Reeds (A) Friendly
U12s			
Kids First U11s	06/11/2022	9.00a.m.	Guildfordians (A)
Kids First U10s	06/11/2022	9.00a.m.	Guildfordians (A)
Kids First U9s	06/11/2022	9.00a.m.	Guildfordians (A)
Kids First U8s	13/11/2022	9.00a.m.	Sutton & Epsom (A)
Kids First U7s	06/11/2022	9.00a.m.	Guildfordians (A)
Kinders			



P 020 3970 4401

E [j.murphy@ovalpeakpartners.com](mailto:j.murphy@ovalpeakpartners.com)

Oval Peak Partners Limited

[www.ovalpeakpartners.com](http://www.ovalpeakpartners.com)

## Little Lyndhurst Pre-School & Reception

*Their journey starts here...*

- Wrap around care 8am-6pm
- Holiday provision available
- Flexible sessions
- Early Years Grant accepted

*Come & visit us*

[admissions@lyndhurstschool.co.uk](mailto:admissions@lyndhurstschool.co.uk)



## Lyndhurst Prep

Years 1 to 6

*A truly individual education...*

- Bursaries & Awards available
- Wrap around care 8am-6pm
- Excellent senior school results
- Extra Curricular Activities

*Book a tour today*

[admissions@lyndhurstschool.co.uk](mailto:admissions@lyndhurstschool.co.uk)



01276 22895  
36 The Avenue  
Camberley  
GU15 3NE

in

# Gold Sponsor



Punjab is the land of Five Rivers and the land of the oldest civilisation in the world 'the Indus valley civilization' . Perhaps, it would be appropriate to call it the Land of Plenty!!

The fertility of its fields and the richness of its dairy have been the envy of the subcontinent.

Punjab is famous for its adventurous, outgoing, eat well-drink well Punjabis. The emphasis has traditionally been on robust food, prepared with the simplest of ingredients and the simplest of basic techniques. Punjab – this side of the border or that – is situated at the crossroads of Silk Route. This allowed the Punjabis – Sikh, Hindu and Muslims – to imbibe diverse culinary influence. They tasted the best of the rest before anyone else on the subcontinent. The proximity with Persia, Afghanistan and Central Asia gave them a taste for fresh and dried fruits and exotic nuts.

Jinney Punjab NahinWekhaya, Au Janamaya Hi Nahin.

“He who has not seen Punjab has not lived at all”

67-69 Park Street, Camberley, Surrey  
[inquiry@sanjha.co.uk](mailto:inquiry@sanjha.co.uk)





# League Tables

## London & SE Division (Regional 1 South Central) League

#	Team	P	W	D	L	PF	PA	+/-	TB	LB	Pts
1	Wimbledon	7	6	0	1	324	117	207	6	1	31
2	Havant	7	6	0	1	224	106	118	6	1	31
3	Camberley	7	6	0	1	217	122	95	5	0	29
4	Oxford Harlequins	7	5	0	2	163	176	-13	2	0	22
5	Maidenhead	7	4	0	3	223	213	10	5	0	21
6	Bracknell	7	4	0	3	155	172	-17	3	0	19
7	Banbury	7	3	0	4	147	206	-59	1	0	13
8	London Welsh	7	2	1	4	165	189	-24	1	1	12
9	Bournemouth	7	2	0	5	139	174	-35	1	2	11
10	Brighton	7	1	0	6	167	229	-62	3	4	11
11	Sutton & Epsom	7	1	1	5	168	201	-33	1	3	10
12	Royal Wootton Bassett	7	1	0	6	84	271	-187	1	0	5

## Surrey Premiership League 1

#	Team	P	W	D	L	PF	PA	+/-	TB	LB	Pts
1	Wimbledon 2nd XV	5	5	0	0	230	46	184	5	0	25
2	Dorking A XV	5	4	0	1	236	57	179	4	0	21
3	Camberley 2nd XV	4	3	0	1	77	80	-3	2	0	15
4	Richmond Normans (4th XV)	4	2	0	2	114	125	-11	2	0	12
5	Esher Abbots (3rd XV)	3	2	0	1	106	61	45	2	0	11
6	Horsham Lions (2nd XV)	3	2	0	1	67	67	0	2	0	11
7	Sutton & Epsom 2nd XV	5	1	0	4	76	177	-101	1	1	10
8	Brighton 2nd XV	4	1	0	3	111	180	-69	1	0	8
9	Farnham 2nd XV	4	0	0	4	86	164	-78	2	2	8
10	Battersea Ironsides 2nd XV	3	0	0	3	33	179	-146	1	0	4

# Camberley RFC 1st XV



P 020 3970 4401

[E.j.murphy@ovalpeakpartners.com](mailto:E.j.murphy@ovalpeakpartners.com)

Oval Peak Partners Limited

[www.ovalpeakpartners.com](http://www.ovalpeakpartners.com)



Mike Courtness

& Neil Doody

Match Ball Sponsors

## Coaching Staff

Dir of Rugby: Gareth Rise

1st XV Coach - Chris

Laidler

Forwards Coaches -

Michael Clarke, Sam

Voight, Alex Hughes

Backs Coach - Liam

Prescott

Physio - Simon Carr

Manager - Ant Bentham

Press Officer - Roger Berry

## Position Sponsors

Simon Olsen

Chris Gibson

Chris Hill

Roger Chamberlain

George Gould

Bruce McLaren

Brian Holland

Stephen Wickens

Gwynne Evans

Harry Fish

Derek Olsen

Bill Murray

Roger Berry

Rusty Smith

Billy White

SCRUFFS

## Likely team:

<u>No.</u>	<u>Name</u>
1	Adam Picket
2	Michael Clarke
3	Nick Barry
4	Sam Voight
5	Dom Sammut
6	Hamish Janes
7	Chris Bird (C)
8	Alex Hughes
9	Vic Hardwicke
10	Liam Prescott
11	George Owen
12	Jaid Wiltshire
13	Alex Young
14	Josh Lewanituva
15	Gabe Hills
16	Finlay Glass
17	Ed Grosvenor
18	Joe Wood

# Bournemouth RFC 1st



## GREENE KING

BURY ST EDMUNDS

### Likely team:

1. Alan Manning
2. Conrad Carkket
3. Luca Firetto
4. Matt Warwick
5. Connor McCaffery
6. Ben Kimber
7. Ciaran Smyth
8. Jake Guildford

9. Harry Warr
10. Antony Fitch

11. Josh Wickens
12. Grant Hancox
13. Adam Higgins
14. Ryan Morrell
15. Ben Meaden

16. Dean Smith
17. Henry Taylor
18. Jack Young

### Position

Loose Head Prop  
Hooker  
Tight Head Prop  
Lock  
Lock  
Blind Side Flanker  
Open Side Flanker  
No. 8

Scrum Half  
Fly Half

Wing  
Centre  
Centre  
Wing  
Full Back

Substitute  
Substitute  
Substitute

*the***PennyGroup**



**Showcase**  
CREATIVE

Showcase Creative Ltd.

01276 300151  
[info@showcasecreative.com](mailto:info@showcasecreative.com)  
<https://www.showcasecreative.com>  
Unit 17 St Georges Industrial Estate  
Wilton Road  
Camberley  
GU15 2QW  
United Kingdom

*Goddard and Grant*  
*Jewellers Ltd*

37 High Street, Frimley, GU16 7HJ  
Tel: 01276 21727

You have tried the best  
Now try the best

For all your sales, valuations, jewellery, clock and watch repairs

Unbeatable offers on Silver, Jewellery, Trophies and gifts

We guarantee not to be beaten on price or service

OFFICIAL SUPPLIER TO CAMBERLEY RUGBY CLUB

Coaching Staff: Head Coach: Mike Pope, Coach: Matt Sturgess'

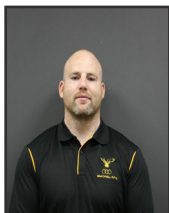
Pitch Equipment  
provided by  
The New CoOp  
on the Frimley Road



# Today's Opposition - Bournemouth RFC

It is believed that the Club first played in 1888, one of the main fixtures being Downton; the journey, by horses and traps, was enlivened on one occasion by one trap arriving with half the side who duly changed at the Bull Inn together with the Downton side. While waiting for the rest of the Bournemouth side to arrive, they proceeded to consume liquid refreshment to such an extent that, by the time the others arrived following a breakdown, Downton and half the Bournemouth side were quite incapable of taking the field. The difficulties of transport and the dearth of nearby fixtures were obstacles that even the most enthusiastic could not overcome and gradually the Club's activities ceased. This problem continued through to 1929. The Club then cut the long-distance fixtures and played within a 50 mile radius of Bournemouth. The Sports Club purchased the ground at Kinson Park Road, Northbourne and, as there was room, Bournemouth RFC were offered a pitch. However, the offer was declined owing to the distance from the town! Dicks Richards then undertook the job of raising the newly formed Rugby Section of the Sports Club and, within a month, two teams were being fielded, playing in black, yellow and blue striped shirts. As the ground at Northbourne was not yet ready, a ground was hired at Muscliffe Farm, near the Horse and Jockey pub on the Wimborne Road. Changing and bathing were in a loft followed by tea in a cow shed. The farmer was paid 2/6d to clear the pitch of cow dung but his idea of clearance seemed to be spread it evenly over a larger area! After going for three seasons, the Sports Club beat Bournemouth RFC by an unspecified narrow margin and a very keen and even contest developed between the two clubs. The Sports Club eventually obtained a stronger fixture list, including games against the 'A' XV's of some of the leading London clubs such as Blackheath, Harlequins, London Scottish and Richmond plus Woodford 1st XV, Bath United, Bristol United, Clifton, Old Redingians, Taunton, Torquay, Sidmouth, Exmouth and Somerset Police and of course the local 'blood battles' such as Yeovil, Salisbury, US Portsmouth, Berkshire Wanderers (now Reading), Portsmouth and the Trojans. Again the question of raising a representative side for the long-distance matches caused much trouble and in the 1938/9 season it was suggested that the two clubs should merge to ensure adequate reserves and to field six sides on Saturdays—the Sports Club's colours of black shirts with narrow gold hoops to be worn. The war, however, interfered with this programme but in the full postwar season the idea was put into practice and to be called Bournemouth RFC. It was felt in the immediate postwar period that the Club was well served by the local schools. It was in the 70s that old boys from Portchester School really made their mark when it was only half-jokingly suggested that you had to be an Old Portcastrian to play for the Club. This corresponded to the so-called 'Golden Era' when Bournemouth enjoyed unparalleled success. They won the Dorset & Wilts Cup four years in succession, from 1977/8 to 1980/81. Mini Rugby was started in 1976 by Derek Ward. Merit Tables were introduced for the season 1982/3 and Bournemouth were placed in the Bisley Office Equipment Southern Merit Table. Bournemouth won the Merit Table in 1983/4. It was this success that placed Bournemouth in South West 1 (Level 5) when the full-blown league rugby—the English Clubs Championship—was introduced for the 1987/8 season. It unfortunately corresponded with a decline in Bournemouth's relative playing strength and they struggled against the opposition in that first season and were immediately relegated. After three seasons in South West 2, Bournemouth were relegated again to Southern Counties. They won promotion back into South West 2 in 1993/4 their Centenary Year. This division was reformed into South West 2 East in 1996/7 but were relegated from that new division after three seasons into what had now become Southern Counties South and remained there for six seasons before winning promotion to South West 2 East in 2004/5. After two seasons they won their way back to South West 1. After four seasons, by which time the division was styled National 3 South West, they lost in a play-off against Hertford 22-23 but the following year they won promotion in fine style with the club-scoring records being broken all over the place and reached the highest level (4) the Club had ever played at — National 2 South for the 2012/2013 Season.

# 1st XV Squad



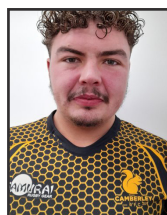
Michael Clarke



Adam Musa



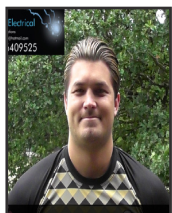
Tom Allen



Nick Barry



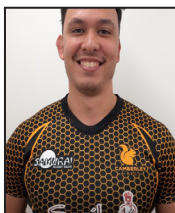
Josh Lewanitupa



Josh Watson



Tom Chennell



Chris Bird



George Owen



Ben Lovell-Smith



Matt Smart



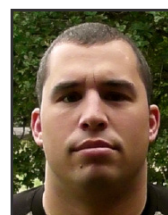
Dom Sammut



Jaid Wiltshire



Sam Voight



Greg Franzel



Liam Prescott



Shawa Rai



Alex Hughes



Connor Diplock



Ed Grosvenor



Silver Sponsor



A **Physiotherapy** and **Sports Injury Clinic**  
Also offering Therapeutic and Sports Massage

**Proud to support Camberley RFC**

Tel: 07859 766590  
[www.thephysiocamberley.co.uk](http://www.thephysiocamberley.co.uk)



# SUPPORTING

Camberley Rugby Club

## £50 donation to Camberley Rugby Club

...when you take out a new insurance policy with A-Plan Camberley for the first time. Quote 'Camberley RC'. T&C's apply\*

23 High Street, Camberley, GU15 3RB

01276 673 300

**A-plan**  
insurance  
## a howden company



\*Offer available to clients taking out a new policy (minimum premium £200 excluding additional products, optional extras and fees) for the first time with A-Plan. Only available with the above branch. Other exclusions apply. Policy must be on cover for 14 days. Donations will be made on a monthly basis, unless agreed otherwise. This offer cannot be used in conjunction with any other offer. A-Plan reserve the right to change or withdraw this offer at any time. Offer ends 05/10/22. Trustpilot rating correct as of 05/10/21. A-Plan Insurance is a trading style of A-Plan Holdings which is authorised and regulated by the Financial Conduct Authority. Registered office: 2 Des Roches Square, Witney, OX28 4LE. Registration number 750484.

[aplan.co.uk/camberley](http://aplan.co.uk/camberley)

# CAMBERLEY RUGBY CLUB'S CROWDFUNDING CAMPAIGN TO RAISE £15,000

**We have launched our Crowdfunding campaign to raise £15,000 by mid-November** *by Matt Searle (Comms Rugby)*

<https://www.crowdfunder.co.uk/p/camberley-rfc-improvement>

**The club's ambitious plans include:**

- adding a lift up to the first floor educational areas to improve access
- rearranging and opening up existing educational areas with the added benefit of improving the experience on match days and at special events
- remodelling changing areas to provide the level of facilities expected for a club of their standing
- reinvigorating their dated kitchen, modernising electrical appliances and refitting throughout

## **City Lunch individual ticket 18th November (£95 or more)**

Reserve your seat at Camberley Rugby Club's annual City Lunch. Your ticket will include drinks reception, three course lunch, speaker & auctioneer. The event is held at: Smith & Wollensky, The Adelphi Building, Covent Garden Riverside, 1-11 John Adam Street, London WC2N 6HT. We are very fortunate to have Nigel Owens MBE, WRU referee and world record holder, refereeing the most test matches, as our guest speaker.

## **Player Sponsor (£200 or more)**

Why not support your favourite player on the pitch. Get named in all promotion of the players, images, news and match reports. What better way is there to show your support of your favourite Cambo star.

## **Match Day Sponsor (£300 or more)**

Match day lunch and entertainment supporting a home game match. Sole use of the Snug bar and TV room, and one of the balconies, if requested. Display on the club's promotional TV screens. Involvement with lunch menu planning if requested 2 bottles of house wine at the sponsor's lunch table. Flexible invoicing arrangements, enabling sponsors to add the cost of lunches and bar expenditure to the total bill.

## **Balcony Sponsor (£750 or more)**

## **Camberley Rugby Club Chair (£25 or more)**

## **200 Club (£24 or more) Entry for 1 Year**

## **Donation of £10 or more**





## **Q: WHERE DO THE GIRLS GO AFTER MINIS?**

## **A: CAMBERLEY RFC**

As more girls pull their boots on, at Camberley we are proud to open a pathway from Minis to the Women's XV, for our current minis and all girls eager for the thrill of Sunday matches, fun and friendship. We are currently growing our new girl's section, delivering rugby for U12s, U14s and U16s led by enthusiastic and experienced coaches, training every Wednesday from 6pm. Our training sessions are open to all and suitable for brand-new players alongside minis that have played their way through age grade rugby and ex-players wanting to step back onto the field. Everyone is welcome here at Camberley RFC and there is a place for everyone.

This morning, we were up early cheering on Alex Mathews, a Camberley original and current Red Rose, as England face South Africa in the last pool game of the Rugby World Cup in New Zealand. Alex and her sister Fran, both started their rugby careers at Camberley and went on to play for England and England 7's. Another Camberley original, Ellie Boatman, recently received her first England cap and is part of the current GB7s team.

We are immensely proud of the achievements of these inspirational rugby players and strive to build a section that supports all girls to experience the enjoyment of our great game.



Come and join us at our next RFU INNER WARRIOR (and bring a friend) on Sunday 6th November at 11am. This is a rugby taster session, suitable for beginners and seasoned players, giving you the opportunity for a hands-on experience and to meet the coaches. Open to all U12s, U14s & U16s that are between school years 7-11.

Further information is available on our Facebook page @CamberleyGirlsRugby or email our Head of Girls Rugby Tara Barnett at [girlsrugby@camberleyrugbyclub.co.uk](mailto:girlsrugby@camberleyrugbyclub.co.uk)

# EXPRESS YOUR INTEREST IN OUR CITY LUNCH WITH GUEST SPEAKER NIGEL OWENS - FRI 18TH NOV 2022

One of the best events on our Camberley Rugby calendar, our City Lunch, is taking place on Friday 18th November from 12pm - 5pm in Smith & Wollensky's in Covent Garden.

Tickets are £95 per head. **What's our City Lunch?**



For those of you who have not attended this event before, it's a really fun day, that kicks off with plenty of G&Ts, followed by a three-course lunch and an auction with some fantastic lots on offer. This year we have managed to secure Nigel Owens as our guest speaker. The feedback from previous years has been great, and the event has built in popularity each time. Monies raised go to our club, benefiting all our members! We will also be making a donation to MIND the Mental Health Charity.

**Who's it for?** Our City Lunch is for club members and their families, friends, business contacts and clients who enjoy a great 'corporate' day out.

**How to express interest** Email our club secretary Nicki Bundock to express your interest: [nicki@camberleyrugbyclub.co.uk](mailto:nicki@camberleyrugbyclub.co.uk) You're able to buy between one and ten tickets. Please let Nicki know who you'd like to sit with.

Alternatively, if you would like to book a table (ideally in groups of 10 people) please let Nicki know and she'll arrange for you to be invoiced.

**Can you offer an auction prize?** We are also looking for high end auction prizes. At this event we tend to see some really good prizes being auctioned off for great sums of money. If you have, for example, a holiday home, debentures to events, or anything that you think you would happily donate for our City Lunch then please do let Nicki know.

**ROSCAN ELECTRONICS**

Electronics manufacturing services  
Over four decades delivering excellence

PCB Manufacturing    PCB Assembly    Cable & Harness Manufacture    Electromechanical Assembly

With our experience, know-how, and fully equipped facility, Roscan Electronics offers a full electronics manufacturing service. From supplying the bare circuit board right through to building and testing your finished product, we are the perfect one-stop solution.

If your company has a concept that needs to become a reality, a production run that needs to be delivered fast, or if you require low volume high volume PCB assembly, Roscan Electronics is the solution.

Call 01890 757 287 | Email: [sales@roscan.co.uk](mailto:sales@roscan.co.uk) | [roscan.co.uk](http://roscan.co.uk)





# Thank you to our Sponsors

## ELECI⚡SERVE E+M

Proud Sponsors of



Eleciserve E+M are privately owned electrical & mechanical contractors based in Camberley. We operate across a vast degree of sectors, from high end hotels / residential and offices to distribution and HS2 works - with over 100 engineers in house and growing Eleciserve E+M can accommodate on all projects for Electrical and Mechanical across all sectors.

We have seen a huge growth in demand for our services throughout the last few years, we believe this is down to our hands on approach and utilising our own staff in house which gives us more control on the quality of the projects we deliver.



Eleciserve also offers a turnkey design and build service, again with our own in house design team - this allows us to turn design requirements & client led changes around very quickly. We are very forward thinking with the utilisation of 3D BIM software and collaborative workspace communication software.

Whilst we continue to grow, Eleciserve remains a family based and orientated company at heart - we constantly re-invest in our team and take pride in our investment in the local community.

We look forward to meeting the supporters and sharing a beer (or 2) in the clubhouse.



**COMMERCIAL** **HOTELS** **INDUSTRIAL** **RESTAURANTS**  
**LEISURE** **DISTRIBUTION** **RESIDENTIAL** **CIVIL** **INFRASTRUCTURE** **WAREHOUSE**



01276 536 227

info@eleciserve.co.uk • www.eleciserve.co.uk





# Changing lives...

## Wooden Spoon is the children's charity of rugby.

We fund life-changing projects across the UK and Ireland to support disadvantaged and disabled children.

Our rugby heritage has given us our core values of passion, integrity, teamwork and fun. Working closely with the international rugby community, these values drive the ethos and spirit in everything we do.

Get involved today. Together we can change children's lives through the power of rugby.

