



CAMBERLEY RFC

v BANBURY RFC

01.10.22



**London & SE Division
(Regional 1 South Central)**
Watchetts Recreation Ground, Park Road,
Camberley, Surrey



Welcome to Camberley RFC



Welcome Everyone to our match against Banbury RFC.

The 1st XV and 2nd XV have got off to a great start of this new season. I know that the players are really enjoying the step up and the standard of play is great to watch as a supporter. This was clear by the results over the last two weeks winning against two of our longtime rivals.

I would like to think that we as supporters do support the two teams on a Saturday. I noticed that at Havant and Bracknell, our last two away matches, their support was impressive. We are now playing at a high level and our support should reflect that, so get your friends to come along with you to Watchetts Park. We have a week off next week and then we are playing at home against the present top of the league team, Maidenhead. It would be great to have a big home crowd for that match to lend our support to the team. We need to build up our fan base.

Thank you to all who help make this a great club to belong to - our exec, coaches, players, Emma and Nicki and their bar staff, led by Steve, the SCRUFFS and supporters who include many ex-players, reflected in the number of ex-players sponsoring matches like Dave and Stewart today and our sponsors.

Enjoy the match, Mike Franzkowiak (President)



Match Sponsors today

Dave Scott and Stewart Davies

Thank you to Dave and Stewart for sponsoring this match - Longtime members of the club and ex 1st XV players.

(If you want to get information about international tickets, what the sections of the club are up to and for future fixtures and events please visit the club website organised by Matt Searle)

**Match v Bracknell. Photo by Dinger
(and on front cover)**



CLASSY CAM CLAIM HONOURS IN LOCAL DERBY

BY ROGER BERRY

Cam just too good for neighbours Bracknell

So on a glorious September Saturday we saw Cam receiving the kick off playing up the slope (hill) for the first 40 and despite the proximity of the 2 clubs most of the Cam boys had never experienced playing here. Cam fielded the kick and slowly moved play up to half way and then a delightful move saw Brizzle get the ball on half way and, like a knife through butter, he sliced the Bracknell defence to dot down in the corner and with Liam converting from wide out the black and ambers had taken a 7 point lead with barely 5 mins on the clock. Again, from the restart Cam coolly moved play up in to the Bracknell half and a lovely kick by Liam saw the home 15 forced to find touch in his own 22. Cam, through Dom and Sam, then turned the screw and when they won another pen Liam pushed it to within 5m. Actually the lineout did not function as in training and so the ball was played out wide but as play then came back across we saw Bazza hurtling for the line and he was able to draw the final defender before seeing Gabe touch down again in the corner. Another fabulous kick by Liam brought the score to 14 – 0 on 10 mins and Bracknell were already looking a bit shell shocked. For the next 20 mins Cam were unable to capitalise on their possession and Bracknell showed why they were 2 and 1 with an aggressive driving maul and some good D although somewhat let down by an erratic lineout. Cam were also bossing at scrum time and regularly drove the home side backwards but really didn't get the rewards from the official that this dominance deserved. During this period Bracknell had several long spells in the Cam 22 but the black and ambers organisation was just too good and slowly Cam moved play back into the visitors half and then we saw some real training field play with great hands all over the park until, from the Bracknell 22, wide on the right first Bazza showed his real talent by brushing off the first attempt to bring him down before setting up Clarke for his first try on his return to his former club – what a moment. Again magic boot Liam converted from the touchline and so, after 35 mins Cam had moved into a 21pts lead. And things were about to get worse for the home side when, following a great take from the restart by Hughsey, we saw Vic take play up to halfway where, for the first time in the game, the ball reach our Flying Fijian and he was away, swotting off would be tacklers to touch down in the corner for the bonus point try and half time.

With Cam now playing towards the clubhouse they were soon on the attack again and a sweet kick pass by Liam almost saw Gabe over for a try but the home side were truly fired up and were soon playing in the Cam 22 again and on 51 min s crossed for a well deserved try. Unfortunately the game was becoming very 'bitty' with lots of breaks in the play due to injuries and even the official became involved when her boot appeared to split but eventually Cam found themselves again in 5m lineout territory and although the first bit went awry the ball was quickly swung out to the backs and a huge miss pass saw Gabe in for his second of the afternoon and although Liam missed adding the extras from the touch line the score was now 7-31 and despite several valiant efforts the home side, who were clearly struggling with injuries, just did not have the where with all to break down the Cam defence, while Cam clearly for the remainder of the game regularly went 'off script' which although causing the coaches nightmares in fact is sort of understandable in this sort of scenario. So a really good result for the black and ambers against a side who, based on today, will win more games than they lose this season and trouble most sides in the league.

As for Cam, today we actually saw lots of good periods of attractive attacking rugby with both forwards and backs relishing the opportunity to run with the ball BUT as always the foundation of any good side must be the pack and today we saw an immense performance from Greg, Clarkey and Bazza in the front row while Dom and Sam were prominent in attack and defence, while BLS, Birdy and Hughsey, each in their own way are class acts.

Today we saw some really aggressive defence from all three of them and with Hughsey often soaring high in lineouts or restarts he was always a threat with ball in hand. Ally and Liam, playing together for only the second time are looking a good pairing in the absence of Tom (One Leg) Chenell and the 9, despite carrying a sore leg, is clearly looking to consolidate his position while Tom is away. Our third centre partnership in 4 games worked well with Alex also finding his 1's feet, today ably guided by Brizzle who had an outstanding game. I caught him, during the warm up, looking up the hill to the corner flag in the top corner was it fear I don't know.

Now there is always some banter with Jaid and I as of course he comes from the wrong end of the county but the sanitised version goes something like me saying 'if you get the ball on halfway you will never make that corner' – these Bristolians really are cantankerous – well done Jaid for proving me so wrong. As to the back three we are probably blessed with one of the best combination in the league, the experience and pace of Gabe, the skills, eagerness to attack and pace of Vic and The Flying Fijian who needs 2/3 opponents to halt any progress and as yet hasn't got out of 3rd gear this season.

Finally it was really great to see Clarkey score and for the first time in my recollection actually play the full 80 – he was so pumped on his return to Lilly Hill Park.

The 2's also had a good day claiming the spoils against local rivals Farnham 14-12.



Sponsors





Electronics manufacturing services

Over four decades delivering excellence



PCB Manufacturing



PCB Assembly



Cable & Harness Manufacture



Electromechanical Assembly

With our experience, know-how, and fully equipped facility, Raecon Electronics offers a full electronics manufacturing service. From supplying the bare circuit board right through to building and testing your finished product, we are the perfect one-stop solution.

If your company has a concept that needs to become a reality, a production run that needs to be delivered fast, or if you require low volume or high volume PCB assembly, Raecon Electronics can help.

Call 0800 737 287 | Email: sales@raecon.co.uk | raecon.co.uk



Showcase Creative Ltd.

01276 300151
info@showcasecreative.com
<https://www.showcasecreative.com>
Unit 17 St Georges Industrial Estate
Wilton Road
Camberley
GU15 2QW
United Kingdom

Fixtures & Results to Date

Camberley RFC Fixtures & Results 2022 - 23 Season						Match Sponsor/Information
13/08/2022	Henley Hawks & Nant RFCs	-	Camberley RFC		Friendly	
20/08/2022	Tottonians RFC	-	Camberley RFC		Friendly	
03/09/2022	Camberley RFC	25 - 20	Wimbledon RFC	W	League	SCRUFFS
10/09/2022	Havant RFC	18 - 6	Camberley RFC	L	League	
17/09/2022	Camberley RFC	43 - 21	Sutton & Epsom RFC	W	League	President's Day (Dave Pinto & Simon Maylem)
24/09/2022	Bracknell RFC	7 - 31	Camberley RFC	W	League	
01/10/2022	Camberley RFC	-	Banbury RFC		League	Dave Scott & Stewart Davies
15/10/2022	Camberley RFC	-	Maidenhead RFC		League	The Thursday Touch Training Group
22/10/2022	Brighton RFC	-	Camberley RFC		League	
29/10/2022	Camberley RFC	-	Bournemouth RFC		League	Andy Todd & Rowly Thomas
05/11/2022	London Welsh RFC	-	Camberley RFC		League	
12/11/2022	Camberley RFC	-	Royal Wootton Bassett RFC		League	Denis Fuller & SCRUFFS
26/11/2022	Oxford Quins RFC	-	Camberley RFC		League	
03/12/2022	Camberley RFC	-	Havant RFC		League	Derek & Simon Olsen
10/12/2022	Sutton & Epsom RFC	-	Camberley RFC		League	
17/12/2022	Camberley RFC	-	Bracknell RFC		League	Sean Bradbery/Dave Whitfield & Mike Franzkowiak/John Carpenter
07/01/2023	Banbury RFC	-	Camberley RFC		League	
14/01/2023	Maidenhead RFC	-	Camberley RFC		League	
21/01/2023	Camberley RFC	-	Brighton RFC		League	Howard Ford & Gus Bartlett
28/01/2023	Bournemouth RFC	-	Camberley RFC		League	
04/02/2023	6 Nations	-				England v Scotland
11/02/2023	Camberley RFC	-	London Welsh RFC		League	C. Powell/Smart Cyber Security Ltd.
12/02/2023	6 Nations	-				England v Italy
18/02/2023	Royal Wootton Bassett RFC	-	Camberley RFC		League	
25/02/2023	6 Nations	-				Wales v England
04/03/2023	Camberley RFC	-	Oxford Quins		League	Chris & Harry Gibson
11/03/2023	Wimbledon RFC	-	Camberley RFC		League	England v France (4.45)
18/03/2023	6 Nations	-				Ireland v England
		-				



Bracknell v Camberley (24th Sept)

Sponsors & Today's Matches

London & SE Division Regional 1 South Central (KO 3.00p.m.)		
1st XV	v	Banbury RFC 1st XV

Surrey Premiership League 1 (KO 1.00p.m.)		
TBA	v	2nd XV



P 020 3970 4401

E j.murphy@ovalpeakpartners.com

Oval Peak Partners Limited

www.ovalpeakpartners.com

Little Lyndhurst Pre-School & Reception

Their journey starts here...

- Wrap around care 8am-6pm
- Holiday provision available
- Flexible sessions
- Early Years Grant accepted

Come & visit us

admissions@lyndhurstschool.co.uk



Lyndhurst Prep

Years 1 to 6

A truly individual education...

- Bursaries & Awards available
- Wrap around care 8am-6pm
- Excellent senior school results
- Extra Curricular Activities

Book a tour today

admissions@lyndhurstschool.co.uk



01276 22895
36 The Avenue
Camberley
GU15 3NE
[in](#) [t](#) [i](#) [f](#)

Fixtures for Women and Juniors

Team	Date	Time	Opposition/Event
Camberley Ladies	02/10/2022	TBC	Farnham Falcons (League)
Senior Academy (U17/18)	02/10/2022	2.00p.m.	Chichester Colts (H) (League)
Junior Academy (U16s)	09/10/2022	TBA	Rosslyn Park A (Cup) (A)
Girls U16s	09/10/2022	2.00p.m.	Values Festival
Girls U14s	09/10/2022	10.00a.m.	Guildford (A)
Girls U12s	09/10/2022	10.30a.m.	Guildford (A)
U15s	09/10/2022		Waterfall Cup R1
U14s	02/10/2022	11.00a.m.	Weybridge Vandals (H)
U13s	02/10/2022	11.00a.m.	Reeds (H)
U12s	02/10/2022		
Kids First U11s	02/10/2022	9.00a.m.	Wimbledon Festival
Kids First U10s	02/10/2022	9.00a.m.	Wimbledon Festival
Kids First U9s	02/10/2022	9.00a.m.	Wimbledon Festival
Kids First U8s	02/10/2022	9.00a.m.	Wimbledon Festival
Kids First U7s	02/10/2022	9.00a.m.	Wimbledon Festival
Kinders			

NEWS

15th October: Maidenhead Match - Lunch will be a Sanjha Curry (sponsored by The Thursday Touch Training Group)

18th November: The City Lunch (Nigel Owens - Speaker)

We are trialling Entry Fee for non-members at home 1st XV matches, starting on 15th October. All other clubs in this league are charging too so be aware that you might have to pay at away matches.

Gold Sponsor



Punjab is the land of Five Rivers and the land of the oldest civilisation in the world 'the Indus valley civilization' . Perhaps, it would be appropriate to call it the Land of Plenty!!

The fertility of its fields and the richness of its dairy have been the envy of the subcontinent.

Punjab is famous for its adventurous, outgoing, eat well-drink well Punjabis. The emphasis has traditionally been on robust food, prepared with the simplest of ingredients and the simplest of basic techniques. Punjab – this side of the border or that – is situated at the crossroads of Silk Route. This allowed the Punjabis – Sikh, Hindu and Muslims – to imbibe diverse culinary influence. They tasted the best of the rest before anyone else on the subcontinent. The proximity with Persia, Afghanistan and Central Asia gave them a taste for fresh and dried fruits and exotic nuts.

Jinney Punjab NahinWekhaya, Au Janamaya Hi Nahin.

“He who has not seen Punjab has not lived at all”

67-69 Park Street, Camberley, Surrey
inquiry@sanjha.co.uk



League Tables

London & SE Division (Regional 1 South Central) League

#	Team	P	W	D	L	PF	PA	+/-	TB	LB	Pts
1	Maidenhead	4	4	0	0	164	60	104	4	0	20
2	Oxford Harlequins	4	4	0	0	98	68	30	1	0	17
3	Wimbledon	4	3	0	1	153	81	72	3	1	16
4	Havant	4	3	0	1	116	70	46	3	1	16
5	Camberley	4	3	0	1	105	66	39	2	0	14
6	Bracknell	4	2	0	2	101	99	2	2	0	10
7	Brighton	4	1	0	3	110	160	-50	3	1	8
8	Sutton & Epsom	4	1	0	3	99	127	-28	1	1	6
9	Bournemouth	4	1	0	3	81	111	-30	1	0	5
10	Banbury	4	1	0	3	88	125	-37	1	0	5
11	London Welsh	4	1	0	3	79	128	-49	0	0	4
12	Royal Wootton Bassett	4	0	0	4	41	140	-99	0	0	0

Surrey Premiership League 1

[illegible]

Camberley RFC 1st XV



P 020 3970 4401

E.j.murphy@ovalpeakpartners.com

Oval Peak Partners Limited

www.ovalpeakpartners.com



Mike Courtness
Match Ball Sponsor

Coaching Staff

Dir of Rugby: Gareth Rise

1st XV Coach - Chris

Laidler

Forwards Coaches -

Michael Clarke, Sam

Voight, Alex Hughes

Backs Coach - Liam

Prescott

Physio - Simon Carr

Manager - Ant Bentham

Press Officer - Roger Berry

Position Sponsors

Simon Olsen
Chris Gibson
Chris Hill
Roger Chamberlain
George Gould
Bruce McLaren
Brian Holland
Stephen Wickens

Gwynne Evans
Harry Fish

Derek Olsen
Bill Murray
Roger Berry
Rusty Smith
Billy White

SCRUFFS

No.

Name

1	Greg Franzel
2	Michael Clarke
3	Nick Barry
4	Sam Voight
5	Dom Sammut
6	Ed Grosvenor
7	Ben Lovell-Smith
8	Alex Hughes
9	Ben Bowen
10	Liam Prescott
11	Josua Lewanituva
12	Jaid Wiltshire
13	Alex Young
14	Tom Allen
15	Vic Hardwicke
16	Chris Bird
17	Josh Thundercliffe
18	Adam Musa
19	Ben Stevens
20	Adam Picket

Banbury RFC 1st XV



GREENE KING
BURY ST EDMUNDS

*the***PennyGroup**

Position



1.	James Leonardi	Loose Head Prop
2.	Ian Isham	Hooker
3.	Nick Agbo	Tight Head Prop
4.	Jacob Turner (C)	Lock
5.	Louis Tooth	Lock
6.	Jack Briggs	Blind Side Flanker
7.	George Ding	Open Side Flanker
8.	Jacob Mills	No. 8
9.	Ed Phillips	Scrum Half
10.	James Miller	Fly Half
11.	Dan Brady	Wing
12.	Louis Richards	Centre
13.	Tom Burman	Centre
14.	Quincy Blythe	Wing
15.	Alex Garbott	Full Back
16.	Sonny Rowe	Substitute
17.	Eoghan Jones	Substitute
18.	Joe Mills	Substitute

Showcase Creative Ltd.

01276 300151
info@showcasecreative.com
<https://www.showcasecreative.com>
Unit 17 St Georges Industrial Estate
Wilton Road
Camberley
GU15 2QW
United Kingdom

*Goddard and Grant
Jewellers Ltd*

37 High Street, Frimley, GU16 7HJ
Tel: 01276 21727

You have tried the best
Now try the best

For all your sales, valuations, jewellery, clock and watch repairs

Unbeatable offers on Silver, Jewellery, Trophies and gifts

We guarantee not to be beaten on price or service

OFFICIAL SUPPLIER TO CAMBERLEY RUGBY CLUB

Coaching Staff: Director of Rugby: Matty Goode; Head Coach: Soane Tongaiha



Pitch Equipment
provided by
The New CoOp
on the Frimley Road



Today's Opposition - Banbury RFC

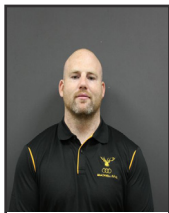
Fifty years ago middle-aged Banburians used to assert that rugby football was played at Banbury around the turn of the century. Some used to embellish their story with horrific tales of encounters and bare their legs to show the damage they suffered in the course of a game. There does not appear to be any written record of these matches. It is, however, quite certain that rugby, under union rules, was not played here before the mid 1920s. Sport at Banbury in the early twenties was, indeed, at a low ebb. Soccer was better organised than cricket but there was no rugby. A young doctor, educated at Taunton School and St. Thomas' Hospital, London, had recently joined a practice at Banbury. He was Dr. Thomas Fielden Briggs. He was keen on rugby having played for his hospital and he and his friends decided that the time was ripe to call a meeting and "count the heads" of would-be rugby players in the town. The first requisite was a ground on which to play and Tom Hankinson reported that he had made arrangements for a pitch on the Bloxham Road, opposite Springfields. It would be let to them by Mr. Colegrave. The club began the second season (1926-27) with 23 members and a fixture list of 21 matches.

An imaginative plan for Banbury sport was, at this time, emerging. It was for the formation of a sports complex at Easington on which cricket, rugby, tennis, hockey and bowls would be played. A ground the Horton View sports field of today was purchased and laid out and the Banbury Cricket and Sports Club formed. The rugby club was asked to throw in their lot with the new association with the added inducement of a better ground to play on and a pavilion to change in. Teams had been changing at the Bluebird Hotel and then motoring to the ground. After much anxious thought the Banbury RUFC decided to join the new association. In October 1927 the club, for the first time, turned out two sides on Saturdays and they won the first home match against the Old Northamptonians handsomely by 11 points to 6 points. For one season, 1929-30, the club was challenged in its support by the formation of an Old Banburians rugby club and some matches had to be scratched in the A fixtures. The Old Banburians then threw in their lot with the town club and fixtures for two sides were kept in 1930-31.

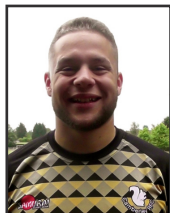
Everything comes to him who waits says the old adage. In 1954 the club first actively envisaged the erection of a permanent pavilion and clubhouse and an estimate of cost was received from Mr. Norman Collisson, a builder and a playing member. This was approved. From that Bloxham Road farmer's field and somewhat basic pub changing rooms in the early years, we have chronicled how Banbury Rugby Club refined and developed both on and off the field during the first eventful 50 years of its existence.

In September 1991 Cherwell District Council approved the change of use of the proposed Bodicote ground from agricultural land to recreational use. This was despite a petition signed by 101 Bodicote residents. One objector went so far as to say, "Rugby Clubs by definition will attract to the area a certain class of people which will have a detrimental effect on the peace and tranquillity of the village." Cherwell Council fortunately did not share that view and approved a grant of £30,000 to assist the club in its move. Permission was finally given for Sainsbury to build their new store, and the former agricultural land at Manor Farm was to become the site of the new Bodicote Park, home to Banbury Rugby Club. Contracts could now be signed, and Banbury RFC was at last on the move. So it was goodbye to the Oxford Road Ground after nearly five decades. At last the big day arrived - Sunday, November 5th 1995 and the official opening of Bodicote Park, home of Banbury Rugby Union Football Club, by Northampton, England and British Lion, Tim Rodber.

1st XV Squad



Michael Clarke



Adam Musa



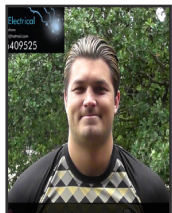
Tom Allen



Nick Barry



Josh Lewanitupa



Josh Watson



Tom Chennell



Chris Bird



George Owen



Ben Lovell-Smith



Matt Smart



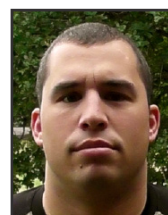
Dom Sammut



Jaid Wiltshire



Sam Voight



Greg Franzel



Liam Prescott



Shawa Rai



Alex Hughes



Connor Diplock



Ed Grosvenor

Silver Sponsor



A **Physiotherapy** and **Sports Injury Clinic**
Also offering Therapeutic and Sports Massage

Proud to support Camberley RFC

Tel: 07859 766590
www.thephysiocamberley.co.uk



SUPPORTING

Camberley Rugby Club

£50 donation to Camberley Rugby Club

...when you take out a new insurance policy with A-Plan Camberley for the first time. Quote 'Camberley RC'. T&C's apply*

23 High Street, Camberley, GU15 3RB

01276 673 300

A-plan
insurance
a howden company



*Offer available to clients taking out a new policy (minimum premium £200 excluding additional products, optional extras and fees) for the first time with A-Plan. Only available with the above branch. Other exclusions apply. Policy must be on cover for 14 days. Donations will be made on a monthly basis, unless agreed otherwise. This offer cannot be used in conjunction with any other offer. A-Plan reserve the right to change or withdraw this offer at any time. Offer ends 05/10/22. Trustpilot rating correct as of 05/10/21. A-Plan Insurance is a trading style of A-Plan Holdings which is authorised and regulated by the Financial Conduct Authority. Registered office: 2 Des Roches Square, Witney, OX28 4LE. Registration number 750484.

aplan.co.uk/camberley

FOUR TRY JOS JUST TOO HOT FOR S & E

by Roger Berry

Cam get back to winning ways in style

On a beautiful sunny Saturday Camberley hosted 'local' rivals Sutton and Epsom at a wonderfully green Watchetts Park, so different from the brown wastelands of a couple of weeks ago and now so much better than my own lawns!!

Cam were also looking for some new green shoots following a stuttering win against Wimbledon and last weeks lack lustre defeat at Havant.

With Our President hosting the Presidents Lunch the game started with a minutes silence to allow us all time to reflect on The Queen's passing before Cam got proceedings going kicking off towards the clubhouse and they were immediately on the attack when the visitors knocked on the kick 15m from their line and a solid scrum plus a training field move with a missed pass and full back Vic joining the line we saw our Flying Fijian Jos stroll over to dot down with less than 2 mins on the clock and with Liam adding the extras the black and ambers were up and running.

The S&E restart again saw Cam adopt a very aggressive approach and great movement by Vic, Jos and Ally took play deep into the visitors half with tight head Bazza making another of his bullocking runs and a couple of penalties later a quick tap and go by Liam saw the Flying Fijian over the whitewash without a hand laid on him for his second of the afternoon and a 14-0 lead with just 10 mins played.

At this stage Cam were clearly gaining the upper hand and scrumtime was becoming very difficult for the visitors with #9 Ally making the most of his dominant pack and soon Cam were pushing hard for their next score but the first attempt was adjudged to have been held up resulting in a drop out to the visitors from under their posts.

We then saw some excellent rugby when, the long drop out was fielded on half way, it was quickly moved through several pairs of hands until it reached our Flying Fijian on the visitors 10m line and he simply scythed through the S&E defence brushing off tackles like he would brush off an annoying fly to dot down and with Liam adding the extras he had scored 3 tries in less than 30 mins.

Unfortunately we then saw what over the years has become to be known as The Camberley Switch Off which almost always occurs when the team has established a reasonable lead early doors and this can be identified by any or all of the following, players falling off tackles, players ignoring the basic systems, players becoming isolated due to lack of support in fact a complete drop in standards, physicality and commitment and towards the end of the half the visitors managed to put a few phases together and on 30 mins they narrowed the gap with a converted try following a good lineout drive.

For the final 10 minutes of the first half we saw lots of endeavour from the black and ambers with their scrum now dominant but despite getting close the score remained 21-7 at the break.

Photos of Sutton & Epsom Match by Dinger



Sutton & Epsom Match - 2nd Half

The second half started very positively when, from another good scrum we saw Jos join the line from the blindside wing before feeding fullback Vic, who was having a really productive day, before he and Gabe exchanged passes with the young fullback crossing in the corner and with an excellent touchline conversion the score had moved to 28-7 with just 45 mins played.

However, rather than Cam putting the hammer down they again clearly switched off and, to their credit the visitors took full advantage of some very poor decisions and soft tackling to get themselves into at least losing bonus point territory by claiming 2 good converted tries so we entered the last 15 mins with the score 28-21 and the momentum seemingly with the visitors until several penalties conceded by the visitors saw Liam nudging the black and ambers towards the S&E line and the line out drive saw Thunderman emerge from the melee to claim the score and another great conversion by Liam moved the score to 35-21 with less than 10 mins on the clock.

Cam again managed the restart well and were soon putting the S&E line under extreme pressure and when they won a penalty in the visitors 22 this time Liam opted for the 3 points to make the idea losing bonus point a tad more difficult for S&E.

And the black and ambers then chose to close out the game with some more quality rugby with Hughsey and Dom carrying the ball back from the restart to deep in the visitors 22 and from the resulting ruck the ball was played quickly to the backs and a huge miss pass saw Jos out wide trot in for his fourth of the game and a final score of 43-21.

So overall this was an excellent performance with the Cam scrum clearly dominant when it was required, the lineout functioning well and the attack looking threatening for most of the game, however I'm sure the coaching team will have more than a few words to say about those periods of the game when concentration, discipline and physicality dropped off quite alarmingly and they will know that if this is allowed to happen against other teams at this level they will be punished.

Today we saw a great performance by the pack both in the tight and loose with Murph and Thunderman showing the depth of quality in our squad by gaining the upper hand at scrumtime. Sam, Dom and the backrow also had big games and really were the bedrock of this win while new boy Ally at #9 was outstanding until he had to be replaced due to injury on 60 mins.

With a completely new centre partnership of Alex Young and coach Laid, both making their Cam debuts, the backline functioned well and provided wingers Gabe and Jos with plenty of good ball while young Vic at fullback was outstanding, always looking for work, full of pace, in fact, an exciting rugby player.

Sponsors & Supporters



**EXTENSIONS
REFURBISHMENT
NEW BUILD
PROJECT MANAGEMENT**

At HLG we specialise in residential projects in Fleet, Camberley, Farnham and the surrounding areas. Our ethos is simple. Deliver our client's project, on time, on budget and to a high quality.

It sounds simple, but it's something we believe and we have been achieving.

Simon and Tim formed Houghton Lewis with the philosophy to create a building company that gave a superior experience to clients and a reputation to rival those who have been operating for a much longer duration.

At HLG we pride ourselves in the quality of our work, which is a result of the culture we have built within the business. This is replicated across all staff and sub-contractors to create a professional and respectful team.



info@houghtonlewis.co.uk
 www.houghtonlewis.co.uk
 [houghtonlewisgroup](https://www.facebook.com/houghtonlewisgroup)
 [@houghtonlewisgroup](https://www.instagram.com/houghtonlewisgroup)
 01252 856858

HOUGHTON LEWIS GROUP
Building Excellence

EXPRESS YOUR INTEREST IN OUR CITY LUNCH WITH GUEST SPEAKER NIGEL OWENS - FRI 18TH NOV 2022



Email our club secretary Nicki Bundock to express your interest:
nicki@camberleyrugbyclub.co.uk This event will sell out quickly! **

One of the best events on our Camberley Rugby calendar, our City Lunch, is taking place on Friday 18th November from 12pm - 5pm in Smith & Wollensky's in Covent Garden. Tickets are £95 per head.

What's our City Lunch?

For those of you who have not attended this event before, it's a really fun day, that kicks off with plenty of G&Ts, followed by a three-course lunch and an auction with some fantastic lots on offer. This year we have managed to secure Nigel Owens as our guest speaker. The feedback from previous years has been great, and the event has built in popularity each time. Monies raised go to our club, benefiting all our members! We will also be making a donation to MIND the Mental Health Charity.

Who's it for?

Our City Lunch is for club members and their families, friends, business contacts and clients who enjoy a great 'corporate' day out.

How to express interest

Email our club secretary Nicki Bundock to express your interest: nicki@camberleyrugbyclub.co.uk You're able to buy between one and ten tickets. Please let Nicki know who you'd like to sit with.

Alternatively, if you would like to book a table (ideally in groups of 10 people) please let Nicki know and she'll arrange for you to be invoiced.

Can you offer an auction prize?

We are also looking for high end auction prizes. At this event we tend to see some really good prizes being auctioned off for great sums of money. If you have, for example, a holiday home, debentures to events, or anything that you think you would happily donate for our City Lunch then please do let Nicki know.

Thank you to our Sponsors

ELECI⚡SERVE E+M

Proud Sponsors of



Eleciserve E+M are privately owned electrical & mechanical contractors based in Camberley. We operate across a vast degree of sectors, from high end hotels / residential and offices to distribution and HS2 works - with over 100 engineers in house and growing Eleciserve E+M can accommodate on all projects for Electrical and Mechanical across all sectors.

We have seen a huge growth in demand for our services throughout the last few years, we believe this is down to our hands on approach and utilising our own staff in house which gives us more control on the quality of the projects we deliver.



Eleciserve also offers a turnkey design and build service, again with our own in house design team - this allows us to turn design requirements & client led changes around very quickly. We are very forward thinking with the utilisation of 3D BIM software and collaborative workspace communication software.

Whilst we continue to grow, Eleciserve remains a family based and orientated company at heart - we constantly re-invest in our team and take pride in our investment in the local community.

We look forward to meeting the supporters and sharing a beer (or 2) in the clubhouse.



COMMERCIAL **HOTELS** **INDUSTRIAL** **RESTAURANTS**
LEISURE **DISTRIBUTION** **RESIDENTIAL** **CIVIL** **INFRASTRUCTURE** **WAREHOUSE**



01276 536 227

info@eleciserve.co.uk • www.eleciserve.co.uk



Changing lives...

Wooden Spoon is the children's charity of rugby.

We fund life-changing projects across the UK and Ireland to support disadvantaged and disabled children.

Our rugby heritage has given us our core values of passion, integrity, teamwork and fun. Working closely with the international rugby community, these values drive the ethos and spirit in everything we do.

Get involved today. Together we can change children's lives through the power of rugby.



Find out more at woodenspoon.org.uk