



CAMBERLEY RFC

v Maidenhead RFC

15.10.22



**London & SE Division
(Regional 1 South Central)**
Watchetts Recreation Ground, Park Road,
Camberley, Surrey



Welcome to Camberley RFC



Welcome Everyone to our match against Maidenhead RFC.

The 1st XV and 2nd XV have got off to a great start of this new season. I know that the players are really enjoying the step up and the standard of play is great to watch as a supporter. This was clear by the results over the last few weeks against Sutton & Epsom, Bracknell and Banbury.

I would like to think that we as supporters do support the two teams on a Saturday. I noticed that at Havant and Bracknell, our last two away matches, their support was impressive. We are now playing at a high level and our support should reflect that, so get your friends to come along with you to Watchetts Park. You'll notice that today we are charging at "the gate" for this match, but members get in free.

We are also starting our Crowdfunding Scheme for various events and ventures which will go on into November. Our aim is to raise over £15,000 so that the various necessary improvements to the clubhouse can be done. So check the relevant section on our website to see if you can support thsi through the 200 Club, the City Lunch, Sponsorship of various forms or just a donation.

Enjoy the match today, Mike Franzkowiak (President)



Match Sponsors today

The Thursday Touch Training Group

Thank you to all of those involved in the Touch Rugby Group for sponsoring this match. The food is supplied by Sanjha - a popular choice of curry from our Golden Sponsor.

(If you want to get information about our Crowdfunding Scheme, what the sections of the club are up to and for future fixtures and events please visit the club website

**Match v Banbury. Photo by Dinger
(and on front cover)**



IMPROVING CAM JUST TOO HOT FOR BANBURY

BY ROGER BERRY

Black and Ambers enjoy perfect conditions to score 7 tries

Rugby returned to Watchetts on a glorious autumn day with the black and ambers matched against another 'first time club' - Banbury, also newly promoted to this Regional League. During the 80 mins we saw how Cam beginning to adjust to this new level with some perfectly executed moves plus a great forward platform but also some 'brain fades' as well. Straight after the game assistant coach Laidis was right on the money when he identified 'mental approach' as probably the side's biggest work on for the next 2 weeks prior to the visit of Maidenhead. Cam, receiving the kick off and defending the clubhouse end, produced another of their explosive starts as the exit eventually saw Cam claim a lineout on halfway and several phases later and with a clever switch in direction by Liam we saw a dart by Clarke and another by Jos before Ed crashed over under the posts with barely 5 mins on the clock. This 7 point lead was not to last very long as Cam were pinged straight from the restart and Banbury chose to take the 3 points.

Cam were again immediately on the attack and we soon saw TommyA, playing at 14 today take advantage of some beautiful passing to dot down in the corner and so after just 10 mins the score was 12-3. And the tries kept coming as Cam again dealt with the restart well and when Ben Bowen collected the Banbury lineout he made good metres which took play into the Banbury 22 and a good physical charge by the ever improving Brizzle saw TommyA make progress before centre Alex was able to dot down for a score of 17-3 with less than 15 mins on the clock.

Again Cam managed to concede a pen in the danger area straight from the restart but this time the kicker pushed his attempt wide and slowly Cam moved play into the visitors half when we saw the first scrum and even at that stage it was clear that, despite clearly having a weight advantage, Banbury were no match for the black and ambers and this became more apparent during the game as they conceded numerous penalties at scrum time and became very used to retreating at pace, thanks in the main to the tremendous power and technique of the front row of Greg, Clarke, replacement Pickle and my man of the match Bazza who absolutely 'beasted' his opponent all afternoon.

The frenetic pace of the game calmed slightly and also brain fade returned to the black and ambers who, very cleverly when in a great attacking position managed, to conjure up a perfect pass to the opposition winger who ran in from halfway to reduce the deficit to 7 points with 30 mins played. With Cam on the attack again they managed to lose control of the ball but, fortuitously, the visitors also were not immune to conceding possession unnecessarily and we had the image of our veteran hooker Clarke, ball in hand on the half way with an open field in front of him. So initially it looked far from promising as, with the support on his left, he chose to dart off to the right but it was clearly part of another plan as following his initial gallop he managed to retain the ball which was quickly moved out wide to exciting fullback Vic who raced through the retiring Banbury defence only to be tackled a metre or so from the whitewash allowing Jaid, commendably in support to collect the ball and touch down moving the score top 22-10 after 35 mins. However the visitors had not read the script at this stage and again benefited from a loose pass to no one, following an attacking surge which again left the winger with a long run in bringing the score to 22-17 on half time.

The original plan for half time was for the boys to stay out on the park but following a rather messy half and the gifting of 2 tries to the visitors the coaching team clearly chose to take the side in to the security of their dressing room and away from Vimeo and any onlookers!! And it worked!!! With Cam restarting towards the clubhouse a beautiful kick by Liam saw Ed leaping high to tap the ball back from the Banbury 10m and good decision making by Dom saw Pickles racing straight through a rather startled Banbury side to dot down under the posts with less than a minute played and moving the score to 29 – 17. To their credit the visitors did battle on and several times came close to closing the gap but on every occasion the Cam D was just too good and clearly their efforts in the first half were now taking their toll with their pack really struggling and retreating at pace at each scrum and with 70 mins on the clock Liam extended the lead with a penalty goal and then, from the restart Cam moved play back to the Banbury 22 and, playing an pen advantage, we saw a great training ground move with Musa, on as a replacement, come into the line from the blindside wing and scorch over for a really well worked try and the winger was at it again just a couple of minutes later when, supporting another destructive run by Vic, he was on hand to cross for his second of the afternoon and with Liam adding the extras this was to be the final score of the game.

Overall this was another good performance by the black and ambers who seem to be gaining in confidence every game although still with too many 'silly' moments which quality sides will undoubtedly take advantage of. As last week a fantastic performance by the pack with all 8 of them, plus the replacements, playing out of their skins for the full 80 and, at the end completely dominating a very hefty opposition who clearly found the going much too tough. A special word for Vice Captain Bazza who seems to be running on something very special as his work at the set piece plus his activities all around the park were second to none today. With Ben B having his first start for the 1s for several seasons this was always going to be a challenge but he stuck at it well and even managed a couple of good breaks. Liam had another good game at 10, marshalling his backs and with Alex benefiting from Jaid's good form and experience the backs looked solid particularly with the mercurial Vic at full back who clearly is enjoying his rugby after such a long break.



Sponsors





Electronics manufacturing services

Over four decades delivering excellence



PCB Manufacturing



PCB Assembly



Cable & Harness Manufacture



Electromechanical Assembly

With our experience, know-how, and fully equipped facility, Raecon Electronics offers a full electronics manufacturing service. From supplying the bare circuit board right through to building and testing your finished product, we are the perfect one-stop solution.

If your company has a concept that needs to become a reality, a production run that needs to be delivered fast, or if you require low volume or high volume PCB assembly, Raecon Electronics can help.

Call 0859 737 287 | Email: sales@raecon.co.uk | raecon.co.uk



Showcase Creative Ltd.

01276 300151
info@showcasecreative.com
<https://www.showcasecreative.com>
Unit 17 St Georges Industrial Estate
Wilton Road
Camberley
GU15 2QW
United Kingdom

Fixtures & Results to Date

Camberley RFC Fixtures & Results 2022 - 23 Season						Match Sponsor/Information
13/08/2022	Henley Hawks & Nant RFCs	-	Camberley RFC		Friendly	
20/08/2022	Tottonians RFC	-	Camberley RFC		Friendly	
03/09/2022	Camberley RFC	25 - 20	Wimbledon RFC	W	League	SCRUFFS
10/09/2022	Havant RFC	18 - 6	Camberley RFC	L	League	
17/09/2022	Camberley RFC	43 - 21	Sutton & Epsom RFC	W	League	President's Day (Dave Pinto & Simon Maylem)
24/09/2022	Bracknell RFC	7 - 31	Camberley RFC	W	League	
01/10/2022	Camberley RFC	46 - 17	Banbury RFC	W	League	Dave Scott & Stewart Davies
15/10/2022	Camberley RFC	-	Maidenhead RFC		League	The Thursday Touch Training Group
22/10/2022	Brighton RFC	-	Camberley RFC		League	
29/10/2022	Camberley RFC	-	Bournemouth RFC		League	Andy Todd & Rowly Thomas
05/11/2022	London Welsh RFC	-	Camberley RFC		League	
12/11/2022	Camberley RFC	-	Royal Wootton Bassett RFC		League	Denis Fuller & SCRUFFS
26/11/2022	Oxford Quins RFC	-	Camberley RFC		League	
03/12/2022	Camberley RFC	-	Havant RFC		League	Derek & Simon Olsen
10/12/2022	Sutton & Epsom RFC	-	Camberley RFC		League	
17/12/2022	Camberley RFC	-	Bracknell RFC		League	Sean Bradbery/Dave Whitfield & Mike Franzkowiak/John Carpenter
07/01/2023	Banbury RFC	-	Camberley RFC		League	
14/01/2023	Maidenhead RFC	-	Camberley RFC		League	
21/01/2023	Camberley RFC	-	Brighton RFC		League	Howard Ford & Gus Bartlett
28/01/2023	Bournemouth RFC	-	Camberley RFC		League	
04/02/2023	6 Nations	-				England v Scotland
11/02/2023	Camberley RFC	-	London Welsh RFC		League	C. Powell/Smart Cyber Security Ltd.
12/02/2023	6 Nations	-				England v Italy
18/02/2023	Royal Wootton Bassett RFC	-	Camberley RFC		League	
25/02/2023	6 Nations	-				Wales v England
04/03/2023	Camberley RFC	-	Oxford Quins		League	Chris & Harry Gibson
11/03/2023	Wimbledon RFC	-	Camberley RFC		League	England v France (4.45)
18/03/2023	6 Nations	-				Ireland v England
		-				



Camberley v Banbury (1st Oct)

Sponsors & Today's Matches

London & SE Division Regional 1 South Central (KO 3.00p.m.)		
1st XV	v	Maidenhead RFC 1st XV

Friendly (KO 2.00p.m.)		
2nd XV	v	Maidenhead 2nd XV



P 020 3970 4401

E j.murphy@ovalpeakpartners.com

Oval Peak Partners Limited

www.ovalpeakpartners.com

Little Lyndhurst Pre-School & Reception

Their journey starts here...

- Wrap around care 8am-6pm
- Holiday provision available
- Flexible sessions
- Early Years Grant accepted

Come & visit us

admissions@lyndhurstschool.co.uk



Lyndhurst Prep

Years 1 to 6

A truly individual education...

- Bursaries & Awards available
- Wrap around care 8am-6pm
- Excellent senior school results
- Extra Curricular Activities

Book a tour today

admissions@lyndhurstschool.co.uk



01276 22895
36 The Avenue
Camberley
GU15 3NE
[in](#) [t](#) [i](#) [f](#)

Fixtures for Women and Juniors

Team	Date	Time	Opposition/Event
Camberley Ladies	16/10/2022	2.30p.m.	Horsham Ladies II (League) (A)
Senior Academy (U17/18)	16/10/2022	2.00p.m.	TBA
Junior Academy (U16s)	23/10/2022	TBA	Twickenham RFC (H)
Girls U16s	06/11/2022	11.00a.m.	Inner Warrior
Girls U14s	16/10/2022	10.00a.m.	Values Festival
Girls U12s	16/10/2022	10..00a.m.	Values Festival 2
U15s	16/10/2022	12 noon	Chobham (H)
U14s	16/10/2022	12 noon	Bracknell (A)
U13s	23/10/2022	9.00a.m.	Farnborough (A)
U12s	16/10/2022		
Kids First U11s	23/10/2022	9.00a.m.	HOME FESTIVAL
Kids First U10s	23/10/2022	9.00a.m.	HOME FESTIVAL
Kids First U9s	23/10/2022	9.00a.m.	HOME FESTIVAL
Kids First U8s	23/10/2022	9.00a.m.	HOME FESTIVAL
Kids First U7s	23/10/2022	9.00a.m.	HOME FESTIVAL
Kinders			

NEWS

29th October: Bournemouth Match - Lunch will be sponsored by Andy Todd and Rowly Thomas.

18th November: The City Lunch (Nigel Owens - Speaker)

We are trialling Entry Fee for non-members for today's 1st XV match @ £5. All other clubs in this league are charging too so be aware that you might have to pay at away matches.

Gold Sponsor



Punjab is the land of Five Rivers and the land of the oldest civilisation in the world 'the Indus valley civilization' . Perhaps, it would be appropriate to call it the Land of Plenty!!

The fertility of its fields and the richness of its dairy have been the envy of the subcontinent.

Punjab is famous for its adventurous, outgoing, eat well-drink well Punjabis. The emphasis has traditionally been on robust food, prepared with the simplest of ingredients and the simplest of basic techniques. Punjab – this side of the border or that – is situated at the crossroads of Silk Route. This allowed the Punjabis – Sikh, Hindu and Muslims – to imbibe diverse culinary influence. They tasted the best of the rest before anyone else on the subcontinent. The proximity with Persia, Afghanistan and Central Asia gave them a taste for fresh and dried fruits and exotic nuts.

Jinney Punjab NahinWekhaya, Au Janamaya Hi Nahin.

“He who has not seen Punjab has not lived at all”

67-69 Park Street, Camberley, Surrey
inquiry@sanjha.co.uk



League Tables

London & SE Division (Regional 1 South Central) League

#	Team	P	W	D	L	PF	PA	+/-	TB	LB	Pts
1	Oxford Harlequins	5	5	0	0	144	97	47	2	0	22
2	Wimbledon	5	4	0	1	216	88	128	4	1	21
3	Maidenhead	5	4	0	1	193	106	87	5	0	21
4	Havant	5	4	0	1	147	96	51	4	1	21
5	Camberley	5	4	0	1	151	83	68	3	0	19
6	Bracknell	5	3	0	2	123	117	6	3	0	15
7	Bournemouth	5	2	0	3	109	136	-27	1	0	9
8	Brighton	5	1	0	4	128	182	-54	3	2	9
9	Sutton & Epsom	5	1	0	4	124	155	-31	1	2	7
10	London Welsh	5	1	0	4	105	159	-54	0	1	5
11	Banbury	5	1	0	4	105	171	-66	1	0	5
12	Royal Wootton Bassett	5	0	0	5	48	203	-155	0	0	0

Surrey Premiership League 1

#	Team	P	W	D	L	PF	PA	+/-	TB	LB	Pts
1	Wimbledon 2nd XV	4	4	0	0	194	29	165	4	0	20
2	Dorking A XV	3	3	0	0	150	21	129	3	0	15
3	Camberley 2nd XV	3	2	0	1	48	70	-22	1	0	10
4	Brighton II	3	1	0	2	101	151	-50	1	0	7
5	Richmond Normans (4th XV)	2	1	0	1	66	66	0	1	0	6
6	Horsham II	2	1	0	1	40	43	-3	1	0	6
7	Farnham 2nd XV	2	0	0	2	43	108	-65	1	1	4
8	Sutton & Epsom 2nd XV	3	0	0	3	29	120	-91	0	1	4
9	Battersea Ironsides 2nd XV	1	0	0	1	28	56	-28	1	0	2

Camberley RFC 1st XV



P 020 3970 4401

E.j.murphy@ovalpeakpartners.com

Oval Peak Partners Limited

www.ovalpeakpartners.com



Mike Courtness

& Neil Doody

Match Ball Sponsors

Coaching Staff

Dir of Rugby: Gareth Rise

1st XV Coach - Chris

Laidler

Forwards Coaches -

Michael Clarke, Sam

Voight, Alex Hughes

Backs Coach - Liam

Prescott

Physio - Simon Carr

Manager - Ant Bentham

Press Officer - Roger Berry

Position Sponsors

Simon Olsen

Chris Gibson

Chris Hill

Roger Chamberlain

George Gould

Bruce McLaren

Brian Holland

Stephen Wickens

Gwynne Evans

Harry Fish

Derek Olsen

Bill Murray

Roger Berry

Rusty Smith

Billy White

SCRUFFS

No.

Name

1 Josh Thundercliffe

2 John Murphy

3 Nick Barry

4 Sam Voight

5 Dom Sammut

6 Ben Lovell-Smith

7 Chris Bird (C)

8 Alex Hughes

9 Ally Walton

10 Liam Prescott

11 Gabe Hills

12 Chris Laidler

13 Alex Young

14 Josua Lewanituva

15 Vic Hardwicke

16 Adam Picket

17 Ed Grosvenor

18 Tom Allen

Maidenhead RFC 1st XV



GREENE KING

BURY ST EDMUNDS

Likely team:

1. Elio Mandozzi
2. Jamie Townsend (C)
3. Charlie Thomas
4. Phil Wells
5. Levi Meek
6. Mark Grimshaw
7. Will Macaulay
8. Antonio Kiri Kiri

9. Archie Dunnell
10. Greg Smith

11. Scott Prince
12. Niall Crosley
13. Harry Wells
14. Drew Prince
15. Jamie Maddern

16. Dan Hostetler
17. Ben Allamson
18. Kyle Beattie

Position

Loose Head Prop
Hooker
Tight Head Prop
Lock
Lock
Blind Side Flanker
Open Side Flanker
No. 8

Scrum Half
Fly Half

Wing
Centre
Centre
Wing
Full Back

Substitute
Substitute
Substitute

*the***PennyGroup**



Showcase
CREATIVE

Showcase Creative Ltd.

01276 300151
info@showcasecreative.com
<https://www.showcasecreative.com>
Unit 17 St Georges Industrial Estate
Wilton Road
Camberley
GU15 2QW
United Kingdom

Goddard and Grant
Jewellers Ltd

37 High Street, Frimley, GU16 7HJ
Tel: 01276 21727

You have tried the best
Now try the best

For all your sales, valuations, jewellery, clock and watch repairs

Unbeatable offers on Silver, Jewellery, Trophies and gifts

We guarantee not to be beaten on price or service

OFFICIAL SUPPLIER TO CAMBERLEY RUGBY CLUB

Coaching Staff: Manager: Mike Davies; Head Coach: Dave Mobbs-Smith;
Forwards Coach: Zoran Higgins; Backs Coach: Will Greenwood



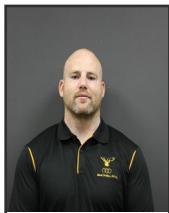
Pitch Equipment
provided by
The New CoOp
on the Frimley Road



Today's Opposition - Maidenhead RFC (In the club's centenary year)

There is a delightful photograph in the Clubhouse's Bonberry Bar of the 15 men who turned out for the new Thames Valley Rugby Club in February 1922. They all look very smart in white kit, with intricately laced boots and neatly parted hair. They had survived WWI, and Captain R.K. Dibb was in charge. In their middle sits R. A. 'Roy' Bonberry, who was influential in founding the Club, and guided its development for the next 60 years. Could any of them have imagined, that nearly 100 years later their new club, and their opponents that day, would still be battling for supremacy. The opponents were Berkshire Wanderers, who eventually became Reading, followed in turn by Thames Valley becoming Maidenhead in 1965. For the record, the Wanderers won the first game and the next two, before Thames Valley emerged triumphant February 1923, winning 6-3. That first game was played on the Cookham Football Club ground, but soon afterwards Valley's home pitch was based on the Bray Show Ground, which lay on the flat ground adjacent to the Bray Road, across the fields and The Cut from the current pitches, and this remained the Club's home until 1926, when they moved to a permanent ground in Kidwells Park. This historic event is commemorated by the RBWM by an information board at the entrance to the park. Kidwells remained home for nearly 40 years, the venue for famous encounters with some wonderful teams of yesteryear, such as the Royal School of Mines, the Hong Kong and Shanghai Bank, the Chartered Bank of India, the Coldstream Guards, and the all important Great Western Railway RFC. They turned up very early on, thus proving to the committees of clubs from Somerset and beyond, that we have always been part of the South West of England. Roy Bonberry proved to be an influential figure. Over Christmas 1921, he had organised a game in aid of the Lord Mayor's Poor Box, on Cookham Moor, this proved so popular that a meeting followed in the Royal Exchange (now Malik's) in Cookham. Jobs were apportioned to volunteers, and off they set to get things established. Bolstered by the popularity of Maidenhead's weekend night club scene (there were a number of them between the Bridge and Boulter's lock) many players found it easy to combine a game in the afternoon with debauchery down by the river. The Club blossomed, started an 'A' XV and everything went smoothly until Hitler brought things to a standstill in 1939. Bonberry got things going again in 1948, and are currently playing in our 95th year.

1st XV Squad



Michael Clarke



Adam Musa



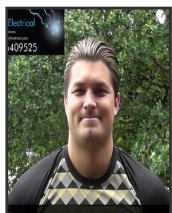
Tom Allen



Nick Barry



Josh Lewanitupa



Josh Watson



Tom Chennell



Chris Bird



George Owen



Ben Lovell-Smith



Matt Smart



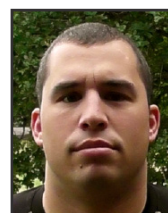
Dom Sammut



Jaid Wiltshire



Sam Voight



Greg Franzel



Liam Prescott



Shawa Rai



Alex Hughes



Connor Diplock



Ed Grosvenor

Silver Sponsor



A **Physiotherapy** and **Sports Injury Clinic**
Also offering Therapeutic and Sports Massage

Proud to support Camberley RFC

Tel: 07859 766590
www.thephysiocamberley.co.uk



SUPPORTING

Camberley Rugby Club

£50 donation to Camberley Rugby Club

...when you take out a new insurance policy with A-Plan Camberley for the first time. Quote 'Camberley RC'. T&C's apply*

23 High Street, Camberley, GU15 3RB

01276 673 300

A-plan
insurance
a howden company



*Offer available to clients taking out a new policy (minimum premium £200 excluding additional products, optional extras and fees) for the first time with A-Plan. Only available with the above branch. Other exclusions apply. Policy must be on cover for 14 days. Donations will be made on a monthly basis, unless agreed otherwise. This offer cannot be used in conjunction with any other offer. A-Plan reserve the right to change or withdraw this offer at any time. Offer ends 05/10/22. Trustpilot rating correct as of 05/10/21. A-Plan Insurance is a trading style of A-Plan Holdings which is authorised and regulated by the Financial Conduct Authority. Registered office: 2 Des Roches Square, Witney, OX28 4LE. Registration number 750484.

aplan.co.uk/camberley

CAMBERLEY RUGBY CLUB LAUNCHES CROWDFUNDING CAMPAIGN TO RAISE £15,000

We have launched our Crowdfunding campaign to raise £15,000 by mid-November
by Matt Searle (Comms Rugby)

<https://www.crowdfunder.co.uk/p/camberley-rfc-improvement>

Funds will be invested to support the ongoing development of the educational and members' facilities in our clubhouse.

Andy Edge, sponsorship lead for the club said: "The hard work and improvements made to our clubhouse over the past three years has given us the ability to provide educational facilities, support rugby activities and expand our catering opportunities."

Edge continued: "Looking at our future, we are aiming to dramatically improve our educational facilities, making them more accessible to our wider community, further improving catering and bar facilities and increasing changing room capabilities to support the diverse groups who play and visit our rugby club."

The club's ambitious plans include:

- adding a lift up to the first floor educational areas to improve access
- rearranging and opening up existing educational areas with the added benefit of improving the experience on match days and at special events
- remodelling changing areas to provide the level of facilities expected for a club of their standing
- reinvigorating their dated kitchen, modernising electrical appliances and refitting throughout

"There are various opportunities to pledge your support," continued Steve O'Meara, club chair.

"We're grateful for any donation from both individuals and businesses in the local area and beyond who want to give back and develop much-needed educational facilities for our young people in Camberley. Whether it's a £10 donation or entering our monthly fundraising prize draw or a larger donation on a sponsorship basis, we're committed to investing for the long-term," said O'Meara

Photos of Banbury Match by Dinger



Crowdfunding - What You Can Sign Up To (See Previous Page)

Donation of £10 or more

Spare us a tenner to help a business you love continue to grow and improve. Funding may allow us to improve disabled access, increase our change facilities to support diverse activities simultaneously or improve the bar areas for bigger and better functions.

200 Club (£24 or more) Entry for 1 Year

Entry into the 200 Club monthly draw, with the opportunity to win each month from your £2 entry. Take the stress out of remembering and invest in your club. This is a 50/50 scheme with 50% paid out in prizes, while 50% supports the growth of Rugby across Camberley.

Camberley Rugby Club Chair (£25 or more)

Why not sit back in your own club chair and watch the autumn internationals? Buy your chance to win one of our bespoke chairs, covered with some of our historic Camberley Rugby Shirts. This includes one of the shirts worn by one of our winning players in the famous Twickenham Final.

City Lunch individual ticket 18th November (£95 or more)

Reserve your seat at Camberley Rugby Club's annual City Lunch. Your ticket will include drinks reception, three course lunch, speaker & auctioneer. The event is held at: Smith & Wollensky, The Adelphi Building, Covent Garden Riverside, 1-11 John Adam Street, London WC2N 6HT. We are very fortunate to have Nigel Owens MBE, WRU referee and world record holder, refereeing the most test matches, as our guest speaker.

Player Sponsor (£200 or more)

Why not support your favourite player on the pitch. Get named in all promotion of the players, images, news and match reports. What better way is there to show your support of your favourite Cambo star.

Match Day Sponsor (£300 or more)

Match day lunch and entertainment supporting a home game match. Sole use of the Snug bar and TV room, and one of the balconies, if requested. Display on the club's promotional TV screens. Involvement with lunch menu planning if requested 2 bottles of house wine at the sponsor's lunch table. Flexible invoicing arrangements, enabling sponsors to add the cost of lunches and bar expenditure to the total bill.

Balcony Sponsor (£750 or more)

Demonstrate your company's support to Camberley Rugby Club, with Advertising space across the clubhouse balcony. You'll receive: Advertising on clubhouse balcony and in match programme. Weekly advertising campaign through website and social media network. Access to tickets for Camberley RFC City Lunch. Company URL and logo space on club website.

Sponsors & Supporters



**EXTENSIONS
REFURBISHMENT
NEW BUILD
PROJECT MANAGEMENT**

At HLG we specialise in residential projects in Fleet, Camberley, Farnham and the surrounding areas. Our ethos is simple. Deliver our client's project, on time, on budget and to a high quality.

It sounds simple, but it's something we believe and we have been achieving.

Simon and Tim formed Houghton Lewis with the philosophy to create a building company that gave a superior experience to clients and a reputation to rival those who have been operating for a much longer duration.

At HLG we pride ourselves in the quality of our work, which is a result of the culture we have built within the business. This is replicated across all staff and sub-contractors to create a professional and respectful team.



✉ info@houghtonlewis.co.uk
🌐 www.houghtonlewis.co.uk
📘 [houghtonlewisgroup](https://www.facebook.com/houghtonlewisgroup)
📷 [@houghtonlewisgroup](https://www.instagram.com/houghtonlewisgroup)
☎ 01252 856858

HOUGHTON LEWIS GROUP
Building Excellence

EXPRESS YOUR INTEREST IN OUR CITY LUNCH WITH GUEST SPEAKER NIGEL OWENS - FRI 18TH NOV 2022



Email our club secretary Nicki Bundock to express your interest: nicki@camberleyrugbyclub.co.uk This event will sell out quickly! **

One of the best events on our Camberley Rugby calendar, our City Lunch, is taking place on Friday 18th November from 12pm - 5pm in Smith & Wollensky's in Covent Garden. Tickets are £95 per head.

What's our City Lunch?

For those of you who have not attended this event before, it's a really fun day, that kicks off with plenty of G&Ts, followed by a three-course lunch and an auction with some fantastic lots on offer. This year we have managed to secure Nigel Owens as our guest speaker. The feedback from previous years has been great, and the event has built in popularity each time. Monies raised go to our club, benefiting all our members! We will also be making a donation to MIND the Mental Health Charity.

Who's it for?

Our City Lunch is for club members and their families, friends, business contacts and clients who enjoy a great 'corporate' day out.

How to express interest

Email our club secretary Nicki Bundock to express your interest: nicki@camberleyrugbyclub.co.uk You're able to buy between one and ten tickets. Please let Nicki know who you'd like to sit with.

Alternatively, if you would like to book a table (ideally in groups of 10 people) please let Nicki know and she'll arrange for you to be invoiced.

Can you offer an auction prize?

We are also looking for high end auction prizes. At this event we tend to see some really good prizes being auctioned off for great sums of money. If you have, for example, a holiday home, debentures to events, or anything that you think you would happily donate for our City Lunch then please do let Nicki know.

Thank you to our Sponsors

ELECI⚡SERVE E+M

Proud Sponsors of



Eleciserve E+M are privately owned electrical & mechanical contractors based in Camberley. We operate across a vast degree of sectors, from high end hotels / residential and offices to distribution and HS2 works - with over 100 engineers in house and growing Eleciserve E+M can accommodate on all projects for Electrical and Mechanical across all sectors.

We have seen a huge growth in demand for our services throughout the last few years, we believe this is down to our hands on approach and utilising our own staff in house which gives us more control on the quality of the projects we deliver.



Eleciserve also offers a turnkey design and build service, again with our own in house design team - this allows us to turn design requirements & client led changes around very quickly. We are very forward thinking with the utilisation of 3D BIM software and collaborative workspace communication software.

Whilst we continue to grow, Eleciserve remains a family based and orientated company at heart - we constantly re-invest in our team and take pride in our investment in the local community.

We look forward to meeting the supporters and sharing a beer (or 2) in the clubhouse.



COMMERCIAL **HOTELS** **INDUSTRIAL** **RESTAURANTS**
LEISURE **DISTRIBUTION** **RESIDENTIAL** **CIVIL** **INFRASTRUCTURE** **WAREHOUSE**



01276 536 227

info@eleciserve.co.uk • www.eleciserve.co.uk



Changing lives...

Wooden Spoon is the children's charity of rugby.

We fund life-changing projects across the UK and Ireland to support disadvantaged and disabled children.

Our rugby heritage has given us our core values of passion, integrity, teamwork and fun. Working closely with the international rugby community, these values drive the ethos and spirit in everything we do.

Get involved today. Together we can change children's lives through the power of rugby.



Find out more at woodenspoon.org.uk