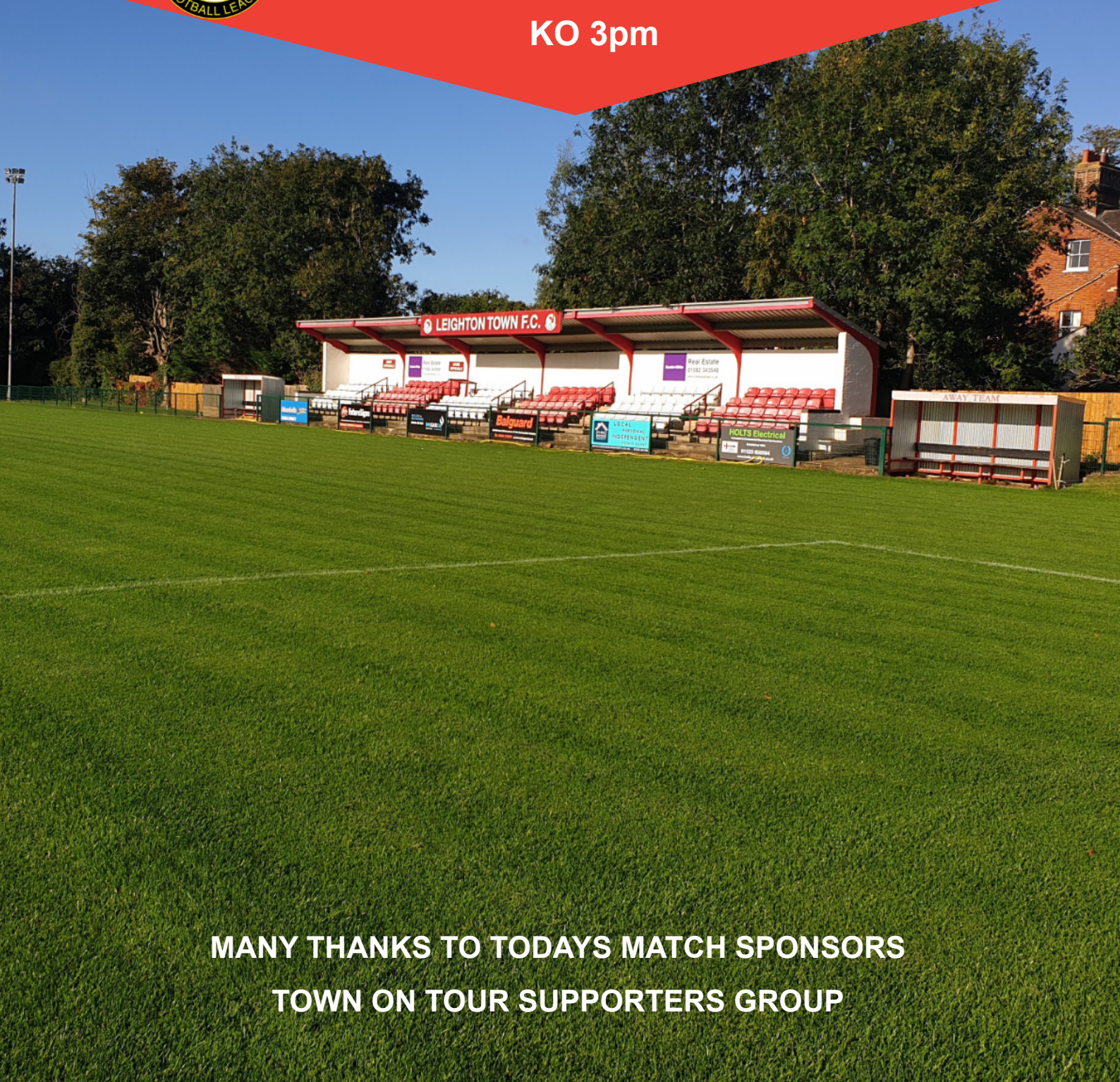


**SSMFL
Premier Division
2021/22 Season**



**Bell Close
Lake Street
Leighton Buzzard
LU7 1RX**

**Saturday 11th December 2021
KO 3pm**



**MANY THANKS TO TODAYS MATCH SPONSORS
TOWN ON TOUR SUPPORTERS GROUP**



Leighton Town

v

Crawley Green



Admission: Adults £7 - Concessions & 13-16's £4 - Under 13's Free



CLUB OFFICIALS & COMMITTEE

PRESIDENT

MIKE HIDE

CHAIRMAN

JOHN MCLOUGHLIN

VICE CHAIRMAN/DIRECTOR OF FOOTBALL

SEAN DOWNEY

VICE CHAIRMAN

IAN STEPHENS

TREASURER

STEVE HARRIS

CLUB & FIXTURES SECRETARY

ROY PARKER

GENERAL COMMITTEE

JOHN TURNER

**LEIGHTON TOWN FOOTBALL CLUB
BELL CLOSE LAKE ST
LEIGHTON BUZZARD
LU7 1RX
TELE; 01525 373311**



Welcome to Bell Close

Good afternoon everyone and welcome to Bell Close for the last home game before Christmas.

We extend a warm welcome to our visitors, Crawley Green who are not enjoying their best form this season and are struggling at the foot of the table. They have recently appointed a new Manager and we wish them well for the remainder of the season, apart from today's game of course. We also welcome our 3 Match Officials, referee, Ross Cole and his assistants, Lyn McGregor, Paul O'Hare and we hope they enjoy the game. We would also like to thank Town fans for their superb support on a very cold day last Saturday.

Last week's defeat to New Salamis has dented any hopes we have of a promotion spot. Despite the defeat, in the first half we created some good chances but were unable to apply the necessary finish which would have put us in the driving seat and the early goal for the visitors at the start of the second half was enough for them to take all three points and close the gap at the top of the table. Three teams below us can gain more points than us if they win all their games but we also must keep up the fight for maximum points, draws are no good. We have to play Hadley twice and Harpenden again so it is going to be difficult for all the teams.

On Saturday we will be selling our Christmas Raffle tickets. This Raffle will be for Cash prizes so please buy your tickets as any income will be used to help us further improve facilities at the Club.

We are looking forward to seeing all our fantastic supporters tomorrow for our last home game for some weeks. Let's get behind Paul and the players and end the home calendar year on a high with a great crowd and win. Given the growing concerns about covid we respectfully suggest that in the short term at least, any visitors to club events over the next few weeks take a lateral flow test before coming and follow guidelines re washing hands etc. Hand wash and sanitisers will be available in the clubhouse as per normal. Let's protect ourselves and others! Thank-you to all in advance for your support with these measures.

NEXT GAMES

On Tuesday 14th December we travel to Ampthill to play in the Gladwish Challenge Trophy and then on Saturday 18th December we travel to play Broadfields at Rayners Lane in the last game before Christmas.



After Christmas we then make the short trip to Bletchley on Tuesday 28th December ko 3pm to play MK Irish who gained promotion from Division 1 last season.

On behalf of the Committee we wish all our Supporters, Sponsors and Players a Merry Christmas and a Happy New Year, thanks for your support so far this season.

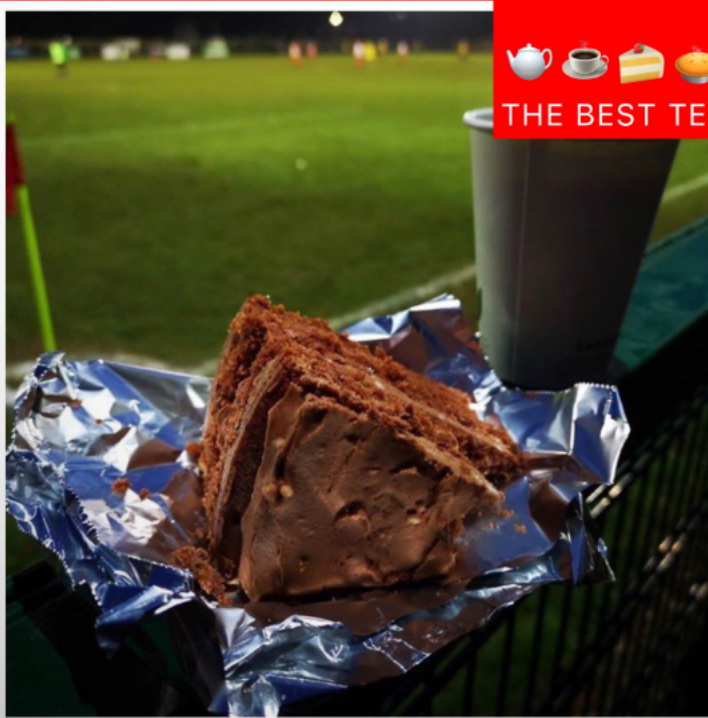
Please continue with your support , although we have slipped from top spot your support might still see us gain a promotion slot.





JACKIES TEA BAR
WILL BE OPEN

JACKIE'S FOOD	
SAUSAGE BAP	£2.50
BACON BAP	£2.50
BURGER	£3.00
CHESBURGER	£3.50
CHICKEN WRAP	£3.50
SAUSAGE ROLL	£1.50
...	...
...	...



☕ ☺ 🍰 🍔 🌭 🍌
THE BEST TEA BAR AROUND





The History of Crawley Green FC - Saturday Side

Crawley Green Sports & Social Club was formed in November 1989 after arsonists caused the virtual destruction of the present building. Members of Stopsley Harriers, The Wyvern and Ramridge Rangers Sunday Football Clubs amalgamated to form the present club and were successful in securing a 99 year lease from the Council. The New Club house was formally open on 19th June, 1992 by then Luton Town manager, David Pleat.

The badge incorporates all the elements of the three founding clubs but also local history. The club badge was adopted in 1996 after many years of discussion. Maroon was the colour of the largest single club Ramridge Rangers and it was adopted as the club colour. It is incorporated in the Club badge as the bar across the middle. Stopsley Harriers were well known for their red and blue quarters, whilst Wyvern Members were predominantly blue since their foundation. Both these colours are reflected in the badge. Crawley Green FC Saturday side was formed in 1993 after another local team, Somerset Tavern came under the Crawley Green umbrella. The club colour of maroon was adopted by the team.

In 2018 Luton Town FC and Crawley Green FC further enhanced their club partnership with the announcement that Crawley Green FC will play their home games at The Brache training ground from season 2018-2019. Crawley Green, who are the only Luton based team to play at step 5 or above of the National League System, have been trying since 2008 to get permission to build a suitable stadium. Unfortunately in that time they have failed to receive the support needed from Luton Borough Council, despite there being no cost involved for the Council. This decision has meant that they have had to ground share with Barton Rovers FC for 11 years now, to enable the team to continue to play at that level.

This is a poor indictment of the Council's attitude to football in Luton, considering that other major towns in Bedfordshire have at least one team each playing step 6 or above. Their lack of support in comparison to the likes of Biggleswade (3 teams), Bedford (2 teams), Dunstable (2



teams), Leighton Buzzard (1 team) and Kempston (1 team), means that even our local leagues have the ignominy of having to travel to local villages to host their cup finals.

Luton recently installed a brand new all-weather surface down at the training ground and to comply with national ground grading criteria Crawley Green will complete the remaining requirements. This will include new changing rooms, dugouts, turnstile and spectator standing area. Tony Talbot, Chairman of Crawley Green stated: “We would like to thank Gary Sweet and Kevan Platt and everyone at Luton Town FC for firstly affording us this opportunity and then their support in making this happen.

“In the past we have seen a number of ex-Crawley Green players go on to play for Luton, but our partnership has really continued to grow in recent years. It’s with great satisfaction for us that we are currently seeing James Justin starring for the first team. In addition the recently transferred Tyreeq Bakinson and four of the current U18s team, Josh Neufville, Joe Mead, Ciaren Jones and Michael Shamalo all came through our youth system.

“A town the size of Luton needs a successful professional club, as well as teams playing in the national league pyramid”. This gives our talented youngsters a pathway to development, without having to go outside the borough to develop. “In addition, underneath these clubs is a large community hub, which affords lots of youngsters the opportunity to play football. These community hubs ensure all young people have the opportunity to participate in football in a safe supportive environment, which preserves the dignity and respect of the individual regardless of age, gender, sexual orientation, ethnic origin, religion, disability, income and any other social deprivation. With Government statistics showing a concerning rise in childhood obesity throughout the UK, these community hubs encourage our children to stay active and engage in physical activity. This all helps promote health, self-confidence and importantly social cohesion, and hopefully leads to the wider benefits in raising standards.”

Hatters chief executive Gary Sweet said: “We see ourselves as guardians of elite football in our region and part of that responsibility is to help – wherever possible – other local, aspirational clubs develop



and thrive, staying at the core of their roots. “The challenges faced at Crawley Green were difficult and, with the great relationship we’ve had over the years, having recruited numerous young players from their excellent development structure, we’re proud to help Crawley Green retain a local home for their competitive games, just as we are happy to utilise our existing training facility at perhaps the only time when it won’t get used.”

In recognition of his services to the community and sport, Crawley Green Sports & Social Club Chairman, Tony Talbot was awarded a BEM – British Empire Medal - in the 2018 New Year’s Honours List.

Finally Crawley Green would like to sincerely thank all their programme advertisers, match ball and match day sponsors for their generous support throughout the season.



BEFORE YOU CURSE

MIND YOUR LANGUAGE



Respect





LEAGUE HISTORY

The League is relatively young compared to other's being formed in 1922 as the Bedfordshire County League. With new clubs keen to join from outside the County it was decided in 1929 to change the name to the South Midlands League.

The League continued to consolidate and strengthen over the ensuing 70 years or so providing quality football for many teams over a large area of the South Midlands.

In 1997 it became apparent that the London Spartan League, which was very much to the South of the League's geographical footprint, was struggling administratively and, with the full support of the Football Association, the decision was taken to merge the two competitions with the new League being known as the Spartan South Midlands League.

The League now covers a wide area from North London in the South to Milton Keynes in the North and from Ware in the East to Aylesbury in the West.

The League is part of the FA's National League System (NLS) and comprises of three Divisions; Premier at Step 5 of the NLS, Division One at Step 6 and Division Two at Step 7.

The League has a proud record of promoting clubs to Step 4 of the NLS and has also provided 4 FA Vase Finalists including two winners in Arlesey Town and Hoddesdon Town FC.

PREMIER



DIVISION



ARDLEY UNITED



ARLESEY TOWN



AYLESBURY VALE DYNAMOS



BALDOCK TOWN



BROADFIELDS UNITED



CRAWLEY GREEN



DUNSTABLE TOWN



FLACKWELL HEATH



HADLEY



HAREFIELD UNITED



HARPENDEN TOWN



HOLMER GREEN



LEIGHTON TOWN



LEVERSTOCK GREEN



LONDON COLNEY



MILTON KEYNES IRISH



OXHEY JETS



RISBOROUGH RANGERS



NEW SALAMIS



TRING ATHLETIC



The History of Leighton Town Football Club

Leighton Town, who were known as Leighton United between 1922 and 1963, were formed in 1885. They were mainly involved in local leagues until the outbreak of the Great War and were winners of the Leighton and District League on several occasions.

Leighton were one of the original members of the South Midland League in 1922 – which at the time was known as the Bedfordshire County League. They were also members of the Spartan League between 1922/23 and 1951/52, but their only successes being the Spartan League Division 2 title in 1923/24 and 1927/28. They were Bedfordshire Senior Cup winners in 1926/27.

In 1952, they became a founder member of the Hellenic League, but after two disappointing seasons, moved to the South Midlands League. In 1965/66 season however, the Premier Championship sat in the Leighton Town Boardroom. The club then rejoined the Spartan League in 1967/68.

Leighton proceeded to consolidate their League success by winning the Bedfordshire Senior Cup for three successive seasons in 1968, 1969 and 1970. Unfortunately, some of the successful players moved on to other clubs, and Leighton's fortunes again declined. A move to the United Counties League proved disastrous and after just two seasons, the club rejoined the South Midlands League.

During the '70's and '80's, Leighton were unable to capture the success of the '60's.

In 1990/1991 the First Team won the South Midlands League Challenge Trophy and the O'Brien's Premier Division Cup, both for the first time in the club's history.

The 1991/2 season was one of the club's best. The South Midlands Premier Division title, which had eluded the club for so long, was won, and with it a place in the Isthmian League.

1992/3 saw the Club's success continue when they won the Bedfordshire Senior Cup for the first time since 1970. The Club missed out on promotion in their first Isthmian League season by just a single point but the Youth Team retained the County Cup.

1995/6 saw the First Team win promotion to Division 2 of the Isthmian League, whilst at the same time retaining the Buckingham Charity Cup. In the 1996/7 season, Leighton won the Isthmian League Associated Members Trophy for the first time. 1998/99 saw the return of the Associated Members Trophy and the Buckingham Charity Cup.



Season 2003/04 Leighton won the Ryman Isthmian Second Division title. They were also named Ryman Division Two Team of the Year, and Paul Burgess was awarded Manager of the Year. They also reached the Fifth round of the FA Vase, and the final of the Beds Senior Cup, before losing to Andover and Arlesey Town respectively.

The 2004-05 season saw the club placed in The Southern League East Division and finished in a creditable tenth place. They also won the Buckinghamshire Charity Cup. The Reserves won the Bedfordshire Intermediate Cup and the U18's won the SCYFL League Shield.

The 05-06 Season saw the Club progress again, improving on the year before, as they finished 8th in The Southern League Western Division. After a poor start, League results improved and the side only suffered four defeats from the start of November until the end of March, a play-off place just eluding them.

After three excellent victories interest in the FA Trophy competition ended with a single goal defeat to eventual semi-finalists, Borehamwood.

The Club also reached the Beds Senior Cup Final, but sadly they again finished as Runners Up.

The Club were relocated to the Southern League Midland Division for 06-07 season but only one League win in the first six games and early exits in the two FA Competitions cost Paul Burgess his job in September. He was replaced by former Wycombe professional Keith Scott, results did improve but it was a disappointing season, although Town did win the Bucks Senior Charity Cup.

The 07-08 started brightly with the first League defeat not coming until mid-October. Three wins in the FA Cup saw the Club reach the 4th Qualifying Round for the first time in it's history. A 3-0 defeat to Conference South, Havant and Waterlooville finally ended the run. Keith Scott then left in December to join Windsor and Eton. In January 2008, Assistant Manager Sean Downey was appointed as First Team Manager and did a splendid job as the Club ended their League season in 9th place, winning the Bucks Charity Cup and reaching the final of the Beds Senior Cup once more.

The 08/09 Season the First Team finished 8th in the Southern League, Midland Division, achieving their highest points total to date at that level. The 09/10 season saw Leighton once again finish in the top half of the table, when they finished in 9th place and they also lost the Bedfordshire Senior Cup Final to Southern League rivals, Arlesey Town after penalties.

Season 2010/2011, saw Town finish in 7th place in the League, gaining 69 points, their best performance since joining the Southern Football



League.

The 2011/2012 a poor season saw Leighton finish in their lowest position for several years.

2012/13 was also very disappointing for the First Team as they finished in 20th place.

2015/2016 After 3 disappointing seasons Leighton finished the season in the bottom two of the Southern League Central Division and were relegated to the Spartan South Midlands League where they had last played in the 1991/92 season.

2016/2017 This was a disappointing season with the club struggling for much of the time after yet another Managerial Change. Things did pick up towards the end of the season and we eventually finished in 16th place.

2017/18 The club retained Scott Reynolds as Manager and finished 4th in the League and reached the Quarter Finals of the FA VASE. Gates improved and it was our best season for about 8 years,

2018/2019 Manager, Scott Reynolds resigned in the close season and Danny Nicholls was appointed as Manager but left in October due to work commitments. The Club then appointed Joe Sweeney and Paul Copson, who had previously won the Premier division title with London Colney as their new Management Team. They steadied the ship and we finished in mid table.

2019/2020 Was a good season for the Club as we again reached the Quarter Final of the FA Vase and after a slow start in the League the team started to find some good form as we slowly climbed up the table. The team were also awarded the Team of the Month twice.

2020/2021 Town for the third time in 4 seasons reached the Quarter Final of the FA Vase but sadly lost out to 2 late penalties. An indifferent start in the League meant we could not quite gain the points needed to gain promotion in a Covid affected season.

2021/2022 Leighton are hoping to be challenging at the top end of the table but we are well aware that this is a difficult Division and several other strong teams will be competing to finish in the top 2 places. .



Leighton Town FC launch on-line Club Shop



The Executive Committee are delighted to announce that in partnership with our current kit providers 'Kinnect International', we have launched an on-line shop. Supporters will be able to purchase an array of LTFC merchandise directly from the suppliers. Although it is a limited offer at present due to overseas chain supply problems, it is our aim to build a larger range of products, in particular replica playing and warm-up shirts. All the items on display in the club shop are available on a 5 day delivery time frame and the last date for pre Christmas orders is the 15th December. The club will receive commission on all the items sold and this will be reinvested in the continuing improvements the club is making to the ground and facilities. Just visit the website and click on the link and get shopping!

Important notice: any queries re the shop should be directed to Kinnect International. Contact details of their customer services are available at the bottom of the web page.

The Executive Committee Leighton Town FC

<https://www.kinnect-int.com/leightontownfc/>



Spartan South Midlands Premier Division

Saturday 11th December – Kick Off 3.00pm unless stated

PREMIER DIVISION

Baldock Town v Leverstock Green
Flackwell Heath v Harpenden Town
Harefield United v Risborough Rangers
Holmer Green v Arlesey Town
Leighton Town v Crawley Green
London Colney v Ardley United
Milton Keynes Irish v Aylesbury Vale Dynamos
Oxhey Jets v Broadfields United

Tuesday 14th December – Kick Off 7.45pm unless stated

THE GLADWISH CHALLENGE TROPHY Second Round

Amptill Town v Leighton Town
Ardley United v Amersham Town (Kick Off 7.30pm)
Hadley v Broadfields United
Holmer Green v Long Crendon
London Tigers v Flackwell Heath (Kick Off 7.30pm)
Risborough Rangers v Pitstone & Ivinghoe

Saturday 18th December – Kick Off 3.00pm unless stated

PREMIER DIVISION

Ardley United v New Salamis
Broadfields United v Leighton Town
Dunstable Town v Flackwell Heath
Hadley v Crawley Green
Harefield United v Holmer Green
Harpenden Town v Milton Keynes Irish
Leverstock Green v Aylesbury Vale Dynamos
London Colney v Arlesey Town
Risborough Rangers v Oxhey Jets



*If we behave positively
during practice and matches,
our children will too.*

*By setting a good example, we'll help
build a supportive environment in which
everyone can enjoy themselves.*

Play Your Part (Code of Conduct)

Spectators and Parents/Carers

**Play your part and support
The FA's Code of Respect:**

- Have fun; it's what we're all here for!
- Celebrate effort and good play from both sides
- Always respect the Referee and coaches and encourage players to do the same
- Stay behind the touchline and within the Designated Spectators' Area (where provided)
- When players make mistakes, offer them encouragement to try again next time
- Never engage in, or tolerate offensive, insulting or abusive language or behaviour

**I understand that if I do not follow the Code,
I may be:**

- Issued with a verbal warning or asked to leave
- Required to meet with the club committee, league or CFA Welfare Officer
- Obligated to undertake an FA education course
- Requested not to attend future games, be suspended or have my membership removed
- Required to leave the club along with any dependents and/or issued a fine



Building society with mutual respect

**We ONLY
do
Positive.**



MATCH REPORT 4/12/21 By Max Bradfield

Leighton Town 0 – 1 New Salamis

Leighton Town slipped off top spot on Saturday after defeat against third place New Salamis. The visitor's early second half strike compounded a dismal day for Town, who couldn't capitalise on a multitude of chances.

Paul Bonham's Town were in the ascendency from the beginning it seemed and the best opportunities fell to Leon Lobjoit.

After some comfortable early exchanges for Leighton, 13 minutes saw the ex-Northampton striker's first effort – a header from the right straight at goalkeeper Austin Bufield.

Two minutes later, the keeper would be called in to action yet again. After some smart build up from the Reds, the pacey Lobjoit was through one-on-one but couldn't beat the onrushing Bufield who made himself big.

19 minutes in, Lobjoit was thwarted twice more. The first was another uncharacteristic misfire blocked calmly, with the subsequent rebound a lot tamer for the travelling goalkeeper.

After a tight spell in the half, Town's next big chance fell to defender Ethan Flanagan. The corner from the right side fell favourably but the strike on the half volley was another routine save.

The half time whistle came at the right time for New Salamis, after coping well with Leighton's pressure. The away side came out strong in the second period and their early exuberance was rewarded with a goal.

Tricky midfielder Harrison Georgiou played in George Lutaaya and the forward slotted past Connor Coulson to the groans of the Bell Close faithful on 47 minutes. This was the foothold Salamina needed and now they grew into the game. Less than five minutes later, continued pressure forced Coulson to make a smart save with his feet.

Later, 68 minutes would see New Salamis try Coulson again after a dangerous free kick. Yet again though, the number one was quick to deny a second goal.

In the final 20 minutes it looked as though heads were dropping. First, Lobjoit was sent to the sinbin on 75'. Then, in what was Leighton's last big chance, Ethan Flanagan was unfortunate to see



his header hit the bar and his resulting effort fly over from close range. The mood of the camp could've been summarised by Tom Silford's trudging off the pitch after seeing red. Falling foul to some gamesmanship from the opposition, it brought a sad end to a frustrating outing at Bell Close.

The 'Reds' played some excellent free flowing football in the first half and should really have had a comfortable lead at the break but seemed to lose their composure and momentum following their opponents early second half strike.

Leighton's next game is Crawley Green back at Bell Close. The visitor's sit rock bottom of the SSMFL and this game offers Bonham's Leighton the perfect opportunity to bounce back.









RECENT RESULTS

Saturday 4th December 2021

SSML	Ardley United	0 2	Flackwell Heath	67
SSML	Arlesey Town	1 1	Harpenden Town	103
SSML	Aylesbury Vale Dynamos	8 1	Holmer Green	76
SSML	Broadfields United	4 1	Harefield United	83
SSML	Crawley Green	1 4	London Colney	45
SSML	Dunstable Town	3 0	Tring Athletic	168
SSML	Leighton Town	0 1	New Salamis	356
SSML	Leverstock Green	1 2	Hadley	53
SSML	Oxhey Jets	1 0	Baldock Town	48
SSML	Risborough Rangers	2 1	Milton Keynes Irish	111





THE INANE RAMBLINGS FROM UP NORFF 'NOWT SO QUEER AS YORKSHIRE FOLK' BY KAREN BROWNE

SATURDAY HEADLINES

Buckingham Athletic, Long Crendon and Aylesbury Vale Dynamos all hit five on their travels. Old Bradwell United get back to winning ways. Burton Park Wanderers still seek first league win. Leighton Town booked Second Round date in the Gladwish Challenge Trophy.

Saturday brought about 93 goals from the 28 games (an average of 3.32 per game). Nathan Burrows (Northampton Sileby Rangers), James Younger (Langford) both netting hat tricks.

Saturday Stats: 28 games played of which 17 were home wins, 6 away wins and 5 draws.

Without A League Draw to date: Aston Clinton, Codicote, Risborough Rangers Development and The 61FC (Luton).

Without A League Defeat to date: Risborough Rangers.

Saturday Highest Attendances: 356 Leighton Town v New Salamis, 168 Dunstable Town v Tring Athletic and 147 Stotfold v Cranfield United (Beds Senior Trophy).

Season's Highest Attendances to date (Premier Division Clubs): 473 Leighton Town v Broadfields United, 449 Leighton Town v Aylesbury Vale Dynamos and 435 Dunstable Town v Leighton Town.

Season's Highest Attendances to date (Division One Clubs): 392 Stotfold v Bedford, 317 Stotfold v Letchworth Garden City Eagles and 292 Shefford Town & Campton v Risborough Rangers (FA Vase).

Season's Highest Attendances to date (Division Two Clubs): 212 Bovingdon v Totternhoe, 175 Bovingdon v Berkhamsted Raiders and 134 Totternhoe v Leighton Town (Gladwish Challenge Trophy).

Saturday 4th December

PREMIER DIVISION

New Salamis took full advantage with the top two not in league action, Leighton were in the LCT while Risborough fell foul to the weather, Salamis climbing to third with a 2-1 success at Flackwell Heath while Harpenden Town dropped to fourth after being held 3-3 at home by lowly Dunstable Town. At the bottom Tring Athletic moved out of the relegation places with a 3-0 home success against Milton Keynes Irish while Broadfields United won



The Views Expressed Are Solely My Own, Are Written Tongue In Cheek
And Should Be Taken With A Pinch Of Salt

4-2 at Holmer Green to ease their relegation fears whilst leaving the hosts with a battle Leighton Town on their hands. Plenty of goals at Oxhey Jets where the hosts finished on the wrong side of a nine goal thriller against Aylesbury Vale Dynamos while Hadley cruised past visiting Arlesey Town 4-0. In the Ardley United days other action Leverstock Green shared the spoils and six goals with visiting Harefield United. Full results and goalscorers are listed below.

0-1 0-2 Ardley United v Flackwell Heath (Essex, Weekes [pen]) Attendance: 67

0-0 1-1 Arlesey Town v Harpenden Town (Crowter) / (Anthony [pen]) Attendance: 103

2-0 8-1 Aylesbury Vale Dynamos v Holmer Green (Baldwin [2], Shortt [2] [1 pen], Hodgins, Berry, Touceda, Brown) / (Unknown) Attendance: 76

1-1 4-1 Broadfields United v Harefield United (J Smith, Rogers, B Smith, Williams) / (Bircham [pen]) Attendance: 83

0-0 1-4 Crawley Green v London Colney (Clark) / (King, Hartley, Odetola, Unknown) Attendance: 45

0-0 3-0 Dunstable Town v Tring Athletic (Muchineripi, Sellers-West, Faulkner) Attendance: 168

0-0 0-1 Leighton Town v New Salamis (Unknown) Attendance: 356

0-1 1-2 Leverstock Green v Hadley (Pett) / (Uribarri, Ofori) Attendance: 53

0-0 1-0 Oxhey Jets v Baldock Town (Nobrega) Attendance: 48

1-0 2-1 Risborough Rangers v Milton Keynes Irish (Wyllie [pen], Mealing) / (Spence) Attendance: 111

DIVISION ONE

With leaders Stotfold involved in County Cup action second placed Winslow United took full advantage to close the gap to three points with a 4-1 home success against struggling Burton Park Wanderers while Buckingham Athletic lost ground after a 2-3 defeat at Bedford, the hosts moving into fifth place as a result of their win. At the other end of the table bottom club Irchester United picked up their fifth point of the campaign with a 2-2 draw with visiting Penn & Tylers Green while Amersham Town also picked up a useful point after their goalless draw with visiting Kidlington Reserves. Elsewhere Northampton Sileby Rangers thumped London Tigers 5-0 and Letchworth Garden City Eagles enjoyed an odd goal in three over visiting Raunds Town. The day's other action saw Long Crendon held to a goalless draw at home against Thame United Reserves in front of a crowd of 125. Full results and goalscorers (where known) are listed below.

0-0 Amersham Town v Kidlington Reserves Attendance: 32

3-2 Bedford v Buckingham Athletic (Bamford, Amadi, Burford) / (Unknown, Cray) Attendance: 35



The Views Expressed Are Solely My Own, Are Written Tongue In Cheek
And Should Be Taken With A Pinch Of Salt

2-2 Irchester United v Penn & Tylers Green (Kirkham, Cullis) / (Cox, **Unknown**) Attendance: 28

2-1 Letchworth Garden City Eagles v Raunds Town (James, Opponent Own Goal) / (McBride) Attendance: 22

0-0 Long Crendon v Thame United Reserves Attendance: 125

5-0 Northampton Sileby Rangers v London Tigers (Burrows [3], Stevens, Taylor) Attendance: 24

4-1 Winslow United v Burton Park Wanderers (Khan [2], Carter, Owusu) / **(Unknown)** Attendance: 63

BEDS SENIOR TROPHY Quarter Finals

It was 3-0 to the SSML against the Beds County League Premier Division in the Beds Senior Trophy Quarter Finals as Stotford, Langford and Shefford Town & Campton all progressed to ensure at least one SSML side will contest this season's Final. Stotford defeated visiting Cranfield United 2-0, Langford overcame Riseley Sports 3-1 at home while Shefford Town & Campton secured a solitary goal success at Crawley Green Reserves. Full results and goalscorers (**where known**) are listed below.

0-1 Crawley Green Reserves v Shefford Town & Campton (Hammer) Attendance: 17

3-1 Langford v Riseley Sports (Younger [3]) / **(Unknown)** Attendance: 58

2-0 Stotfold v Cranfield United (Spavins, Walster) Attendance: 147

LES UNDERWOOD JUNIOR CUP Third Round

Rushden & Higham United booked their passage into the next round of the Les Underwood Junior Cup with a 2-1 success at home against ChromaSport Northants Combination League side Woodford United. Full result and goalscorers (**where known**) are listed below.

2-1 Rushden & Higham United v Woodford United (O'Dell [pen], Morgan) / **(Unknown)** Attendance: 28

DIVISION TWO

Bovingdon made it six wins from their last six games with a 5-1 success at Buckingham United and as a result climbed to second place in the standings while Milton Keynes College Football Academy recorded their third successive league win with a 3-1 success at home against The 61FC (Luton), a result that moved them up to third place. Old Bradwell United continue to top the table following a 4-0 success against visiting Risborough Rangers Development. At the other end of the table Tring Corinthians AFC remain rooted at the bottom after going down 0-5 at Pitstone & Ivinghoe. Elsewhere Totternhoe dropped to fifth following a 0-2 defeat at Eynesbury United while Aston Clinton defeated visiting Berkhamsted Raiders 5-1. The



The Views Expressed Are Solely My Own, Are Written Tongue In
Cheek
And Should Be Taken With A Pinch Of Salt

day's other action saw Sarratt claim a valuable point after a goalless draw at New Bradwell St Peter. Full results and goalscorers (where known) are listed below.

5-1 Aston Clinton v Berkhamsted Raiders (Mann [2], Collins [2], Mitchell) / (Barnard-White) Attendance: 20
1-5 Buckingham United v Bovingdon (Unknown) / (Beckwith [2], Wadmore [2], Unknown) Attendance: 30
2-0 Eynesbury United v Totternhoe (Baxter [2]) Attendance: 101
3-1 Milton Keynes College Football Academy v The 61FC (Luton) (Odojukan, Boyce, Lodder) / (Unknown) Attendance: 30
0-0 New Bradwell St Peter v Sarratt Attendance: 35
4-0 Old Bradwell United v Risborough Rangers Development (Green, Valentine, Smith) Attendance: 33
5-0 Pitstone & Ivinghoe v Tring Corinthians AFC (Hall [2], Gallant, Groom, Downes) Attendance: 61

COMMITTEE AWAYDAYS

SSMFL Board & Committee member Bob Flight was at Leighton Town on Saturday and sends this report – A crowd of over 300 watched the top of the table fixture between hosts Leighton Town and visitors New Salamis. In an entertaining hard fought match, it was Salamis who edged a narrow win to dent the title ambitions of the hosts. This was the proverbial game of two halves as the home team squandered numerous first half changes to score, including two one on ones with the Salamis goalkeeper who made crucial saves on both occasions. There was also a goal line clearance which somehow enabled Salamis to keep a clean sheet at half time, Little was seen of the Salamis attack in the first half but it sprang into life in only minutes after the restart when Leighton lost the ball in defence and a swift cross field pass found George Lutaaya free to score from inside the penalty area, Another Salamis effort was well saved by the home keeper and he provided another great save from a free kick. Leighton tried to respond and they did have a couple of chances, one cleared off the line and another hitting the top of the crossbar. As the game drifted towards the final quarter, Leighton seemed to lose their composure and despite winning a free kick, Leon Lobjoit talked himself into the referee's book and also into the sin bin and for a crucial ten minutes Leighton were reduced to ten men. It did not end there as when Lobjoit returned to the pitch, shortly after, home player Tom Silford received a second yellow card and once again Leighton were reduced to ten men for the final few minutes of the game. The general impression of the game was that Leighton should have been out of sight in the first half whilst Salamis kept their composure and managed the game well to seal a vital win.



LEAGUE TABLE

			Overall						Home						Away							
			P	W	D	L	F	A	W	D	L	F	A	W	D	L	F	A	GD	PTS		
1	Risborough Rangers	16	13	3	0	48	10	8	0	0	26	6	5	3	0	22	4	+38	42			
2	Leighton Town	21	12	5	4	52	23	6	2	2	21	9	6	3	2	31	14	+29	41			
3	New Salamis	17	13	1	3	49	18	5	0	2	24	9	8	1	1	25	9	+31	40			
4	Harpenden Town	19	11	4	4	37	27	5	2	1	19	10	6	2	3	18	17	+10	37			
5	Hadley	17	11	2	4	32	21	5	1	3	16	14	6	1	1	16	7	+11	35			
6	Leverstock Green	19	10	2	7	43	28	4	1	5	23	20	6	1	2	20	8	+15	32			
7	Arlesey Town	18	8	3	7	34	36	3	2	5	17	21	5	1	2	17	15	-2	27			
8	Aylesbury Vale Dynamos	19	8	2	9	38	40	4	0	4	19	19	4	2	5	19	21	-2	26			
9	Flackwell Heath	16	8	1	7	26	17	4	0	5	15	11	4	1	2	11	6	+9	25			
10	London Colney	20	7	2	11	23	47	3	2	5	8	22	4	0	6	15	25	-24	23			
11	Harefield United	17	6	4	7	39	29	4	2	3	21	12	2	2	4	18	17	+10	22			
12	Broadfields United	15	7	1	7	25	28	3	0	5	11	14	4	1	2	14	14	-3	22			
13	Milton Keynes Irish	18	6	4	8	25	28	3	4	2	12	12	3	0	6	13	16	-3	22			
14	Oxhey Jets	18	6	4	8	34	50	2	4	3	20	23	4	0	5	14	27	-16	22			
15	Dunstable Town	20	6	3	11	23	40	3	2	5	10	15	3	1	6	13	25	-17	21			
16	Ardley United	15	6	2	7	24	17	4	2	3	15	8	2	0	4	9	9	+7	20			
17	Holmer Green	18	4	2	12	23	60	2	1	6	14	31	2	1	6	9	29	-37	14			
18	Tring Athletic	18	3	4	11	19	35	3	1	6	10	14	0	3	5	9	21	-16	13			
19	Baldock Town	15	3	1	11	15	30	0	0	6	6	17	3	1	5	9	13	-15	10			
20	Crawley Green	18	2	4	12	22	47	0	1	8	8	29	2	3	4	14	18	-25	10			



SENIOR CUP DRAW

This seasons Senior Cup Draw has been made, First Round ties are on Tuesday 18th January 2022.

We have been drawn Away to Kempston Rovers.

Senior Cup Draw

FIRST ROUND - TUESDAY 18 JANUARY 2022 | KO 7:45pm

BEDFORD TOWN v BARTON ROVERS
DUNSTABLE TOWN v LUTON TOWN
CRAWLEY GREEN v ARLESEY TOWN
KEMPSTON ROVERS v LEIGHTON TOWN
BIGGLESWADE TOWN v POTTON UNITED



SECOND ROUND - TUESDAY 15 FEBRUARY 2022 | KO 7:45pm

BEDFORD TOWN or BARTON ROVERS v BIGGLESWADE TOWN or POTTON UNITED

(WED 16 FEB) BIGGLESWADE FC v AFC DUNSTABLE

BIGGLESWADE UNITED v CRAWLEY GREEN or ARLESEY TOWN

KEMPSTON ROVERS or LEIGHTON TOWN v DUNSTABLE TOWN or LUTON TOWN

#BeTheGame

The NLP Programme Column From Sam Emery

MANY football supporters hope their favourite Christmas present arrives on Boxing Day – in the shape of three points.

Two Non-League sides Sheffield FC and Hallam FC – the world's oldest and second oldest clubs – are the reason the game is played over the festive period.

Hallam hosted their neighbours in the first ever inter-club match on Boxing Day 1860, also known as St Stephen's Day.

The Football League helped continue the tradition in their inaugural 22-game season in 1888-89 when Preston North End defeated Derby County 5-0 on December 26th.

The ceasefires during World War I, particularly on Christmas Day in 1914 when British and German troops played football together, are also said to have strengthened the game's festive legacy.

Matches were even played on December 25th until 1965 when Blackburn beat Blackpool 1-0 in the First Division and Coventry beat Wrexham 5-3 in the Third.

In 1913, Liverpool beat Manchester City 4-2 on Christmas Day, lost the return game 1-0 on Boxing Day, before drawing 3-3 at home with Blackburn Rovers the next day!

In Europe, it is common to have a winter break over the festive period. The Premier League has recently introduced a winter break which this season takes place in January.

The top-flight has maintained its Boxing Day fixture schedule as has the Football League – but the picture is slightly different within Non-League.



The National League, North and South will play on Sunday, December 26th this year and then on Tuesday 28th before playing again on Sunday, January 2nd.

The Isthmian League, Northern Premier League and Southern League – at Steps 3 and 4 – will not play on Boxing Day, competing on Monday, December 27th instead.

They will, however, play on New Year's Day and then on the Bank Holiday Monday, January 3rd.

With the majority of clubs at Steps 3 and 4 part-time, and given the difficulties faced over the past two seasons, having a Boxing Day off seems a sensible decision.

Clubs at these levels and below rely on volunteers with players and managers balancing their playing commitments with full-time work.

The differing schedules across the National League System will be welcome news to groundhoppers too, who will almost be able to watch a match-a-day during the winter period, while crowd sizes are likely to receive the usual boost with matches taking place on Bank Holidays.

It wouldn't feel right if Boxing Day football was completely abandoned but it's a good move from leagues to be looking after those who keep the game going.

The Non-League Paper will be published as usual throughout the Christmas period



CLUB SPONSORS

R.P. Brightman
ROOFING CONTRACTORS
LEIGHTON BUZZARD 01525 375377

THE WRIGHT TILE
STONE & BATHROOM CENTRE LTD
wrighttilecentre.co.uk
Leighton Buzzard 01525 853 100 Charlywood 01923 283 216

LBD
drilling & suspended ceilings
Contact: 07904 - 970650 or 07736 - 676446

www.dorvicscycles.co.uk 01525 373060
Dorvics
for cycles
Cycle Sales & Advice Servicing & Repairs Electric Bike Specialist

énergie Fitness
where you belong...
Telephone 01525 853000 Leighton Buzzard

Greenfleets
VEHICLE LEASING
Business • Personal • Cars & vans • All makes & models

FINE HOMES
PROPERTY
LOCAL PERSONAL INDEPENDENT ESTATE AGENT
WWW.FINEHOMESPROPERTY.CO.UK 01525 261100

Deakin-White
Real Estate
01582 343548
hello@dwrealestate.co.uk

BOILERS + BATHROOMS
07944 499 925
MKGASCO
HEATING + PLUMBING

FutureSigns
SIGNAGE & RE-BRANDING SPECIALISTS - MANUFACTURE + INSTALLATION
info@fs-signs.co.uk Tel 01525 377733 www.fs-signs.co.uk

Marshalls
www.marshalls-coaches.co.uk
01525 376077

Nationwide Copiers
Photocopier sales, servicing and repairs
enquiries@nationwidecopiers.co.uk - 01234 391193
www.nationwidecopiers.co.uk

SIMPLY FLOORING EXPERTS
www.simplyflooringexperts.co.uk 01442 257 902

Buttles
YOUR building partner
Grovebury Road, Leighton Buzzard Tel 01525 218000

DND
DAILY NATIONWIDE DISTRIBUTION LTD
Palletised delivery throughout UK and Europe - Same day courier service
01525 370888 sales@dnd.co.uk Dnd.co.uk

L F CARPENTRY LIMITED
lf_carpentry@yahoo.co.uk

Jackson & Phillips
Since 1971
Tel: 01525 372650
www.jackson-phillips.co.uk

SKYLINE ROOFING CENTRES
Shenley House, Cherrycourt Way, Stanbridge Road, Leighton Buzzard, LU7 4UH
www.skylineroofing.co.uk

RECRUITING NOW
www.miniclipper.co.uk 01525 244700
miniclipper
logistics

GRACECHURCH
WASTE MANAGEMENT
TEL: +44 (0)1906 209220, FAX: +44 (0)1908 209229
EPX HOUSE, 1 BOYCOTT AVENUE, OLDBROOK, MILTON KEYNES, MK9 2RW

STEVE MILLS
BUILDING SERVICES
Tel: 01525 377 143 Mobile 07789 858 791
email: stephen-mills01@tiscali.co.uk

HOLTS Electrical
Industrial & Commercial Electrical Contractors
Established 1984
01525 850084
www.holts-electrical.co.uk

Balguard
Architectural Metalworkers To The Construction Industry
Tel. 01525 373673 metalwork@balguard.co.uk

osborne morris & morgan
solicitors
40 YEARS
Gorbury House
West Street
Leighton Buzzard
Bedfordshire
LU7 5BP
Telephone 01525 376177



How you can help

Many Non League football clubs survive with the help of volunteers, unfortunately like us they cannot survive on that alone. Sponsors, local businesses and their financial donations are also a huge help in keeping the club maintained and helping us to buy equipment, keep up repairs and every few years, purchase a new kit.

Even the smallest of sponsorship money contributes to our football club in so many ways. Programme Sponsors, match and player sponsors all help towards the up keep of the club and to keep it running for our supporters and the local community.

We are here to provide a nice happy place and to provide local football for everyone to enjoy. If you watch it, play it, or volunteer to help the club in any way, Leighton Town FC is for everyone.

Please spread the word about Leighton Town FC, tell your friends and family about us, to show them they have a local football club where they can enjoy a great friendly atmosphere, watch good football and to cheer on their local team.

What does more supporters watching our game mean? It means our team and players out on the pitch get the inspiration, the passion and the knowledge that the local community and supporters are behind them. Home supporters cheering on their team means so much. The noise and support the players receive when people watching cheer during the match, is inspirational for them and raises the desire to win.

When everyone pulls together to achieve success, from volunteers at the club generous sponsors, to the supporters and of course the players and Management, success will be accomplished.

Tell your friends and family, invite them down to Bell Close to come and support us and who knows what might happen



THE REDS



CLUB

WOULD YOU LIKE THE CHANCE TO WIN SOME MONEY EACH MONTH??
FOR ONLY £5 EACH MONTH YOU CAN JOIN THE REDS 100 CLUB.
THE TOP PRIZE IS £100 AND THERE ARE OTHER SMALLER PRIZES -
THE MORE PEOPLE IN THE DRAW THE HIGHER THE PRIZE FUND
BECOMES.

YOU CAN PAY BY CASH, DD OR CHEQUE.



TO JOIN SEE SHEELAH MCGREGOR

YOU HAVE TO BE IN IT TO WIN IT!



Gladwish Challenge Trophy



Ampthill Park Stadium
Woburn St
Ampthill
MK45 2HXon

Gates, Bar and Cafe open at 6:45pm.
Admission Adults £6 Concessions £3 U16 Free



Spartan South Midlands Premier Division



Broadfields United
Tithe Farm Sports & Social Club
151 Rayners Lane
Harrow
HA2 0XH

Admission Adults £5 Concessions £3

Directions to Broadfields

A40 leave at POLISH WAR MEMORIAL onto A4180 West End Road.

After approx 500 meters turn right onto Station Approach at traffic lights turn right into Victoria Road.

Straight over at next roundabout to traffic lights at junction with Alexandria Avenue

Straight over the lights then take second left into Rayners Lane

The Ground is half a mile along on the left hand side.



Spartan South Midlands Premier Division

TUESDAY 28TH DECEMBER

MILTON KEYNES IRISH FC **VS** **LEIGHTON TOWN FOOTBALL CLUB**

MK IRISH **13:00** **LEIGHTON TOWN**

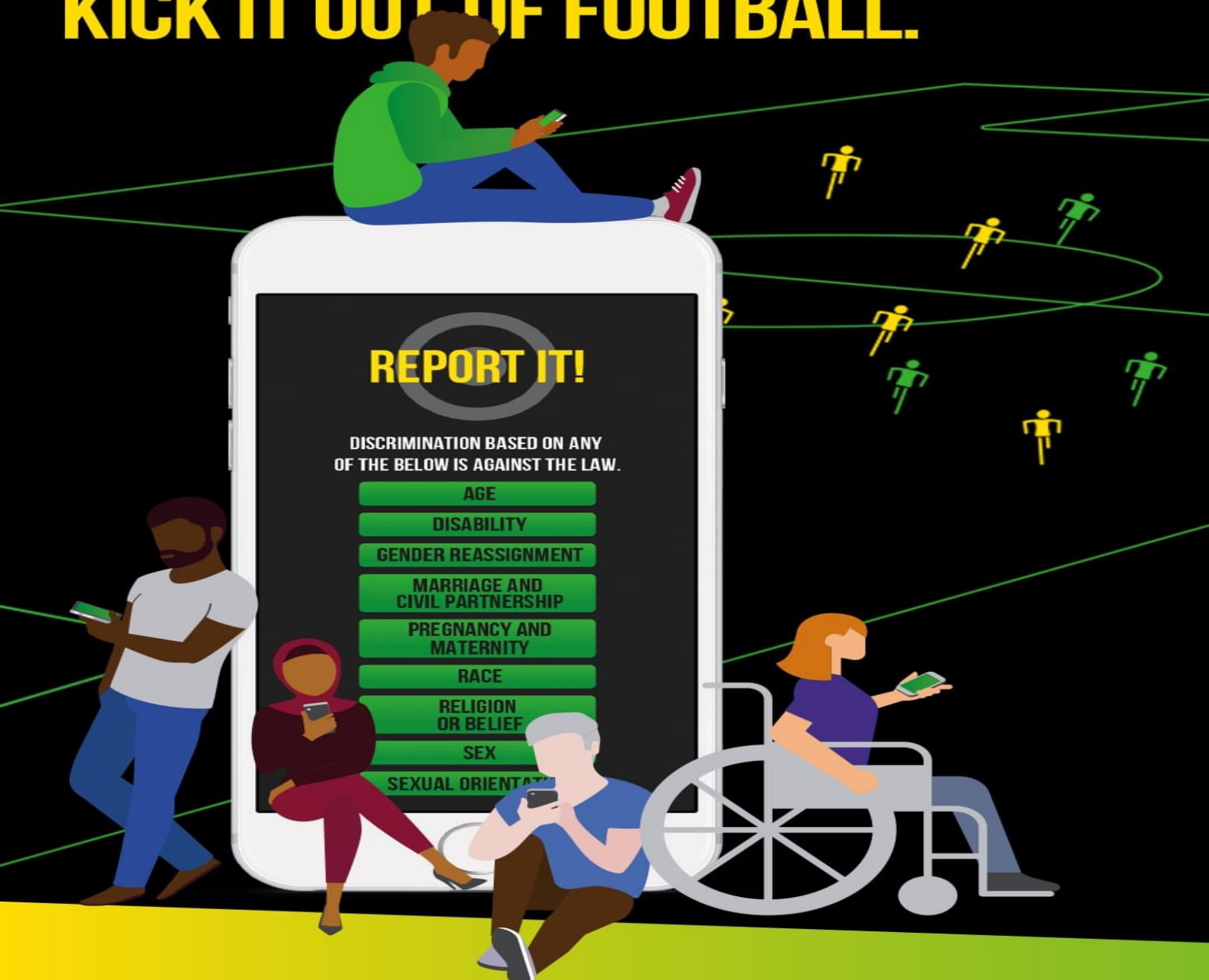
MANOR FIELD BLETCHLEY MK2 2HX

MK Irish
Manor Fields
Milton Keynes
MK2 2HX

Admission Adult £7 Concession £3.50 U16 Free



REPORT IT. KICK IT OUT OF FOOTBALL.



DOWNLOAD OUR FREE REPORTING APP





2021/22 Fixtures

Type	Date / Time	Home Team		Away Team	Venue	Competition
<u>PREM</u>	<u>11/12/21</u> <u>15:00</u>	<u>Leighton Town</u>	VS	<u>Crawley Green</u>	<u>Bell Close</u>	<u>Premier Division</u>
<u>GCT</u>	<u>14/12/21</u> <u>19:45</u>	<u>Amphill Town</u>	VS	<u>Leighton Town</u>	<u>Amphill Park</u>	<u>Gladwish Challenge Trophy 2021 - 2022</u>
<u>PREM</u>	<u>18/12/21</u> <u>15:00</u>	<u>Broadfields United</u>	VS	<u>Leighton Town</u>	<u>TITHE FARM SPORTS AND SOCIAL CLUB</u>	<u>Premier Division</u>
<u>PREM</u>	<u>28/12/21</u> <u>13:00</u>	<u>Milton Keynes Irish</u>	VS	<u>Leighton Town</u>	<u>The Irish Centre</u>	<u>Premier Division</u>
<u>PREM</u>	<u>03/01/22</u> <u>15:00</u>	<u>Aylesbury Vale Dynamos</u>	VS	<u>Leighton Town</u>	<u>The Greenfleets Stadium</u>	<u>Premier Division</u>
<u>PREM</u>	<u>08/01/22</u> <u>15:00</u>	<u>Risborough Rangers</u>	VS	<u>Leighton Town</u>	<u>Windsors</u>	<u>Premier Division</u>
<u>PREM</u>	<u>22/01/22</u> <u>15:00</u>	<u>Leighton Town</u>	VS	<u>Hadley</u>	<u>Bell Close</u>	<u>Premier Division</u>
<u>PREM</u>	<u>29/01/22</u> <u>15:00</u>	<u>Baldock Town</u>	VS	<u>Leighton Town</u>	<u>New Lamb Meadow</u>	<u>Premier Division</u>
<u>PREM</u>	<u>05/02/22</u> <u>15:00</u>	<u>Leighton Town</u>	VS	<u>Ardley United</u>	<u>Bell Close</u>	<u>Premier Division</u>
<u>PREM</u>	<u>19/02/22</u> <u>15:00</u>	<u>Leighton Town</u>	VS	<u>Leverstock Green</u>	<u>Bell Close</u>	<u>Premier Division</u>
<u>PREM</u>	<u>26/02/22</u> <u>15:00</u>	<u>Harpenden Town</u>	VS	<u>Leighton Town</u>	<u>Rothamstead Park</u>	<u>Premier Division</u>
<u>PREM</u>	<u>05/03/22</u> <u>15:00</u>	<u>Leighton Town</u>	VS	<u>Tring Athletic</u>	<u>Bell Close</u>	<u>Premier Division</u>
<u>PREM</u>	<u>12/03/22</u> <u>15:00</u>	<u>London Colney</u>	VS	<u>Leighton Town</u>	<u>LONDON COLNEY FC</u>	<u>Premier Division</u>
<u>PREM</u>	<u>19/03/22</u> <u>15:00</u>	<u>Leighton Town</u>	VS	<u>Arlesey Town</u>	<u>Bell Close</u>	<u>Premier Division</u>
<u>PREM</u>	<u>26/03/22</u> <u>15:00</u>	<u>Leighton Town</u>	VS	<u>Oxhey Jets</u>	<u>Bell Close</u>	<u>Premier Division</u>
<u>PREM</u>	<u>02/04/22</u> <u>15:00</u>	<u>Leighton Town</u>	VS	<u>Flackwell Heath</u>	<u>Bell Close</u>	<u>Premier Division</u>
<u>PREM</u>	<u>16/04/22</u> <u>15:00</u>	<u>Leighton Town</u>	VS	<u>Milton Keynes Irish</u>	<u>Bell Close</u>	<u>Premier Division</u>
<u>PREM</u>	<u>30/04/22</u> <u>15:00</u>	<u>Hadley</u>	VS	<u>Leighton Town</u>	<u>Brickfield Lane</u>	<u>Premier Division</u>

Sin Bins

Temporary Dismissals - otherwise known as 'sin bins' - will become mandatory for matters of dissent across all of grassroots football from the 2019/20 season.

HOW DO YOU FIND YOURSELF IN THE SIN BIN?



Players will only go in to the sin bin for dissent cautions



For use of words or gestures questioning or undermining the ref's decisions



EXAMPLES OF DISSENT

- Shouting at the ref
- Questioning ref's ability
- Slamming the ball in to the ground
- Sarcastically clapping a decision

DURATION OF A SIN BIN



For matches of 90 minutes, players spend 10 minutes in the sin bin



For matches of all other lengths, players spend 8 minutes in the sin bin



If the sin bin period has not expired at the end of:

1st half: Continues into 2nd half
2nd half: Continues into extra time
Extra time: Player can participate in penalties

THE MATCH DAY PROCESS



Dissent



Dissent caution: Ref issues a yellow card and directs the player to the touchline



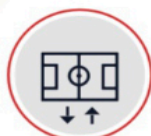
Player can't be substituted until period expires and not if all subs have been made



Whilst in the sin bin, if the player commits a yellow or red card offence they can't take any further part in the game and can't be substituted



If the player commits a 2nd dissent caution and has already been booked, they will take no further part in the game and can't be substituted



If the player commits a 2nd dissent caution and no other offences, they will receive a 2nd sin bin. After which they can't take any further part in the game but can be substituted



If the player commits a yellow card offence on the field of play in addition to a period in the sin bin, they will continue to play



Ref decides when player returns to play

FOUL AND ABUSIVE LANGUAGE IS STILL A RED CARD OFFENCE!



UNDER 18'S CLUB SPONSORS

ROBERT TUCKWELL
AGRICULTURAL CONTRACTOR
&
TUCKWELL PLANT
GRAB SERVICES
MURSLEY
01296 720406
www.roberttuckwell.co.uk



REDROW

A BETTER WAY TO LIVE

Leestone Park, Leighton Buzzard - Enquiries to: 01525 351729

MEAD OPEN FARM
STANBRIDGE RD
BILLINGTON
LEIGHTON BUZZARD
LU7 9JH

01525 852954





LEIGHTON TOWN U18





Full Results Table

Type	Date / Time	Home Team		Away Team	Competition
<u>COR</u>	<u>02/12/21 19:30</u>	<u>AFC Dunstable U18</u>	0 - 2	<u>Leighton Town U18</u>	Corinthian
<u>COR</u>	<u>25/11/21 19:45</u>	<u>Leighton Town U18</u>	4 - 2	<u>Leverstock Green U18</u>	Corinthian
<u>COR</u>	<u>15/11/21 19:45</u>	<u>Luton Town U18 Shadow (Cedars)</u>	0 - 0	<u>Leighton Town U18</u>	Corinthian
<u>COR</u>	<u>04/11/21 19:45</u>	<u>Leighton Town U18</u>	1 - 2	<u>Dunstable Town U18</u>	Corinthian
<u>COR</u>	<u>28/10/21 19:30</u>	<u>Kings Langley FC U18</u>	3 - 2	<u>Leighton Town U18</u>	Corinthian
<u>FAYC</u>	<u>21/10/21 19:45</u>	<u>Bugbrooke St Michaels</u>	4 - 1	<u>Leighton Town U18</u>	FA Youth Cup 3rd Round Qualifying
<u>FAYC</u>	<u>14/10/21 19:45</u>	<u>Bugbrooke St Michaels</u>	Abandoned A - A	<u>Leighton Town U18</u>	FA Youth Cup 3rd Round Qualifying
<u>FAYC</u>	<u>30/09/21 19:45</u>	<u>Rothwell Corinthians</u>	1 - 5	<u>Leighton Town U18</u>	FA Youth Cup 2nd Round Qualifying
<u>COR</u>	<u>23/09/21 19:45</u>	<u>Leverstock Green U18</u>	0 - 10	<u>Leighton Town U18</u>	Corinthian
<u>FAYC</u>	<u>14/09/21 19:45</u>	<u>Leighton Town U18</u>	2 - 1	<u>AFC Dunstable U18</u>	FA Youth Cup 1st Round Qualifying
<u>COR</u>	<u>09/09/21 19:45</u>	<u>Leighton Town U18</u>	3 - 1	<u>Luton Town U18 Shadow (Cedars)</u>	Corinthian
<u>FAYC</u>	<u>02/09/21 19:45</u>	<u>Leighton Town U18</u>	5 - 0	<u>Corby Town</u>	FA Youth Cup Preliminary Round





Corinthian Team Stats

Pos	Team	Overall Goals	Goals	Penalties	Assists	Opposition Goal	Yellow Cards	Red Cards	Second Yellow Card	Sin Bin	Own Goal Conceded	Opposition Penalty
1	AFC Dunstable U18 (SCFL)	7	7					1				
2	Aylesbury Vale Dynamos FC U18	19	19				5					
3	Berkhamsted FC U18	22	20	2			6	1	1			
4	Dunstable Town U18	7	7				9					
5	Kings Langley FC U18	41	41									
6	Leighton Town U18	30	30				7					
7	Leverstock Green U18	20	20		7		1					
8	Luton Town U18 Shadow (Cedars)	14	14				6		1			

Corinthian

		Home						Away						Overall							
Pos	Team	P	W	D	L	F	A	W	D	L	F	A	W	D	L	F	A	GD	PTS		
1	Kings Langley FC U18	7	3	0	0	12	2	4	0	0	18	6	7	0	0	30	8	22	21		
2	Aylesbury Vale Dynamos FC U18	7	2	0	1	7	2	3	1	0	9	6	5	1	1	16	8	8	16		
3	Leighton Town U18	7	2	0	1	8	5	2	1	1	14	3	4	1	2	22	8	14	13		
4	Luton Town U18 Shadow (Cedars)	7	1	1	0	3	0	3	0	2	12	12	4	1	2	15	12	3	13		
5	Leverstock Green U18	11	2	0	5	14	27	2	0	2	6	9	4	0	7	20	36	-16	12		
6	Harpenden Town U18	8	1	1	1	7	5	2	1	2	10	8	3	2	3	17	13	4	11		
7	Berkhamsted FC U18	8	1	1	3	8	14	2	0	1	13	3	3	1	4	21	17	4	10		
8	AFC Dunstable U18	7	1	0	4	5	12	0	0	2	1	6	1	0	6	6	18	-12	3		
9	Dunstable Town U18	8	0	0	4	5	21	1	0	3	5	16	1	0	7	10	37	-27	3		



LEIGHTON TOWN U18





14:29 Fri 22 Oct

73%

thefa.com

We only 😊
do positive.



Building society with mutual respect

SQUAD FROM



Leighton Town

Red & White / Red / Red

Connor Coulson (GK)

Tom Bryant

Tom Silford

Luke Pyman

Ethan Flanagan

Bill Morgan

Sam Olawale

Luke Dunstan

Leon Lobjoit

James Towell

Ashton Campbell

Dave Parkinson

Archie McClelland

Finley Peart

Freddie Heeps

George Kerr

Crawley Green

Sky Blue/Sky Blue/ Sky Blue

Mitchell Howe

Daniel Blackman

Adam Hughes

Isiah Brown-Smith

Marlon Burton

Jarred Isles

Kai Bucciero

Kieran Floyd

Graham Clark

Kienan Malone

Ben Collins

Tyler Fry

Joe Hankins

Aaron Hudson

Luke Andrews

James Lauder

Samuel Mould

Chris Crook

**Manager: Paul Bonham,
Assistant: Anthony Christophi
Physio: John Rutherford &
Lorraine Smith**

**Manager : Paul Blackman
Coach: Matt Harding
Physio: Andras Sumegi**

Match Officials

Referee : Ross Cole

Assistants: Lyn McGregor : Paul O'Hare