



London
Division 2
NORTH EAST



Rochford Hundred Rugby Football Club

Versus

Wanstead RFC



Saturday 27th January 2018 Kick Off 2.00pm



SARACENS
PARTNER CLUB

Referee - Bandra Wekadapola (London Society)

Ball Boys - Under 13's

WWW.ROCHFORDRUGBY.COM • Main 1st XV Sponsors



To sponsor the club email:

COMMERCIAL@ROCHFORDRUGBY.COM

To hire the club email:

FUNCTIONS@ROCHFORDRUGBY.COM

To play for the club email:

COACHING@ROCHFORDRUGBY.COM

For up to date information join our Website at:

WWW.ROCHFORDRUGBY.COM

THE RUGBY PARK - MAGNOLIA ROAD - HAWKWELL - ESSEX - SS4 3AD



/RochfordRugby



@RochfordRugby



rochfordrugby

TELEPHONE

01702 544021

Training nights

Seniors - Tuesdays and Thursdays 7pm

Academy - Thursdays 7pm

Youth (U19-U18) - Tuesdays 7pm

Ladies - Wednesdays 7pm

Youth (U16-U13) - Wednesdays 7pm

Girls - Wednesdays 7pm

Little Scrummers (Age 2-6) - Saturdays 10am

Mini (U12-U6) - Saturdays 10am

Rochford Hundred Rugby Club - Telephone 01702 544021 - Website www.rochfordrugby.com

Rochford Hundred Rugby Club

Welcome to Rochford Hundred Rugby Club

Our Club History

Rochford Hundred was the brainchild of John Roden and Ernie Mills and was first discussed in November 1961 when the two met at the White Hart in Hawkwell. John had played at Ilford Wanderers and Ernie was an Old Tottonian so both were keen to play on their own doorstep. The inaugural meeting was held on the 4th January 1962 at the Bull Inn and was attended by a small group. The club now needed a ground and the assistance of County Councilor, later Alderman, Bill Wright was sought. He was appointed Chairman and very quickly secured the use of Rocheway School which had been closed due to its proximity to Southend airport.

This of course gave the club changing rooms and rugby pitches immediately. To get players an advert was placed in the Southend Pictorial and no less than 45 replies were received. Old Westcliffians had seen the advert and invited the new committee to a beer and cheese evening at the Gables. From this Rochford secured a fixture and an introduction to the London fixture Exchange. The first fixture was in fact against Billericay and not Old Westcliffians however. The name of the club had been suggested by John Roden after he saw a poster by Rochford Hundred Licensed Victuallers Association in the White Hart. Rochford Hundred was after all the name of the district.

The club also managed to secure a clubhouse in the car park of the Horse & Groom thanks to Mrs Innell, the licensee, and quickly set to work to make it ready for use for season 1962/63, although it was in use from March 1962.

It is worth noting that the first games were played in March and April 1962 and that Bob Light was captain.

In Season 1962/63 the club fielded 2 senior teams and a Colts team which is remarkable for a first full season. It is recorded that over 70 fixtures were arranged for this first season. Tony Davies was the 1st XV captain in this season. The Colts team was made up of a number of players from Rayleigh Secondary Modern School (now Fitzwimarc) and Sweyne School. Indeed David Allen (then a 16 year old) remembers being at one of the formation meetings at the Bull when he was still at school.

The first few years were not particularly successful but things changed when the likes of Mike Treasure came onto the scene. He was captain in 1965/66 and 1966/67 and was our first full Essex cap. His team went unbeaten for 18 months and were one of the highest scoring teams in the country. He was fortunate in having players of the calibre of Peter Coster, who was a great centre. Regrettably, Peter died recently in America, where he had been living for many years.

With playing success there came a desire to move to our own ground and in 1968 Jim Sowter, who used to write a column in the local press, printed a story that the club wished to purchase a field in the Rochford district big enough for pitches and a clubhouse. He received a letter from the lady secretary of Southend Manor Football club stating that they had an option on 10 acres of land in Magnolia Road. They were unable to raise the money to proceed and suggested that we might like to take over the option. Jim arranged a meeting between her and Ernie Mills and Ernie liked what he saw and took up the option. The land cost £3,200 and the purchase was completed in March 1969. The Rugby Football Union provided a loan of £2,100 towards the purchase.

The lengthy process of obtaining finance, building the clubhouse and preparing the pitches could now be started. In September 1970 a grant of £5,592 was offered by the Ministry of Housing and local Government and this was supplemented by grants and loans from the Essex Playing Fields Association and the National Playing Fields Association. In July, 1971 the Club gave the go-ahead to Muggleton's to start building based on an estimated cost of £11,320 of which we had raised only £8,000. The clubhouse was officially opened by Dickie Jeeps in April, 1974 when the 1st XV played against a strong Eastern Counties XV.

In 1971/72, when Malcolm Fleming was captain, there were two memorable games both in the Essex Senior Cup. The first game was against Old Bancroftians when Dickie Kent, who played scrum half for England, and Howard Waller, who was a renowned sevens player for Richmond, were in the Bancroft side. Rochford won 21-6 in a tremendous match and demonstrated that they had joined the top echelons of Essex rugby. The next round was against Barking Park Modern Old Boys at Rocheway and a pulsating match was finally won by Barking 14-12. To those who were present these were two of the finest matches played by Rochford.

The pitches in those early days at Magnolia Road were frankly dreadful but over the years there has been considerable work on them and they are now adequate for the task, if not perfect. In the late 1980's and early 1990's the clubhouse was expanded substantially with new changing rooms a gym and a new clubroom and kitchen. Floodlights were also installed.

Our youth section has gone from strength to strength and provides players for our 1st XV and other club teams. In fact our current 1st XV is almost entirely made up of former youth players. We have a ladies and girls section which is unusual among Essex Clubs. The Club is currently playing in London 2 (North East) and we can look back on 50 years of activity with considerable satisfaction.

Rochford Hundred Rugby Club - Telephone 01702 544021 - Website www.rochfordrugby.com

Rochford Hundred Rugby Club



COMEX2000
Network & Communication

Unit 3 Stadium Business Court, Millennium Way,
Pride Park, Derby DE24 8HP

Telephone +44(0)1332 34 74 74
Fax +44(0)1332 34 47 88

LEAGUE LUNCHES

27th January 2018 v **Wanstead**

17th February 2018 v **Romford & Gidea Park**

10th March 2018 v **Old Cooperians**

7th April 2018 v **Norwich**

14th April 2018 v **Sudbury**

All members and friends are invited to attend any of the sponsored lunches at a cost of **£20.00** per head. Book your seats through **John Drinkwater** on **01702 204237, 07940 217899** or directly at the club. If you wish to be a match sponsor please email:

commercial@rochfordrugby.com



07970 254222
01708 453922
info@roofaid.co.uk



Rochford Hundred Rugby Club - Telephone 01702 544021 - Website www.rochfordrugby.com



Help your vision last a lifetime.

Book your Eye Test with an in-store expert.

Find us on High Street, Rayleigh.

Call 01268 771148 or book online at visionexpress.com

vision ~~ex~~press

VISION.TAKEN SERIOUSLY.

Ask in-store for details.

PLAYER PROFILE

MATTHEW STEWART

(1st XV Captain)

NAME – Matthew Stewart

D.O.B – 09/02/1992

POSITION – 10,11,12,13,14 or 15

NICKNAME – The Colonel

WEIGHT – Used to be 14st

HEIGHT – 5ft 11

FAVOURITE FOOD – Italian

FAVOURITE DRINK – Hendricks Bramble

BEST RUGBY MEMORY – Being made 1st XV captain

WORST RUGBY MEMORY – Being relegated from London 1 and then sacked as captain (lol)

IF YOU HAD TO CHOOSE 3 PEOPLE TO GET STUCK IN A LIFT WITH. WHO ? WHY ?

- 1 – Jean-Claude Van Damme, childhood hero
- 2 – Sonny Bill Williams, for reasons that can't be explained
- 3 – Robert Mugabe, political debates about home

FUNNIEST IN THE TEAM – Craig Strachan

WORST DRESSED – Beero

LONGEST IN THE SHOWER – Sam Fombo



PLAYER PROFILE

CRAIG STRACHAN

NAME – Craig Strachan

D.O.B – 13/10/1992

POSITION – 1, 7 or 12

NICKNAME – Haddock

WEIGHT – 104kg

HEIGHT – Short

FAVOURITE FOOD – Peanut butter

FAVOURITE DRINK – Milk

BEST RUGBY MEMORY – I have hated every minute

WORST RUGBY MEMORY – Losing by 80 points at Henley

IF YOU HAD TO CHOOSE 3 PEOPLE TO GET STUCK IN A LIFT WITH. WHO ? WHY ?

1 – Nobody

2 – Nobody

3 – Nobody

I want to be stuck in a lift by myself for some peace and quiet

FUNNIEST IN THE TEAM – To laugh at, Luke

WORST DRESSED – Beero

LONGEST IN THE SHOWER – Sam Fombo





TRY!

The Wi-Fi Guy

**600% more facebook likes
and check-ins for your business.**

**Increase your reach, drive
customers to your door.**

web - www.wifiguy.co.uk

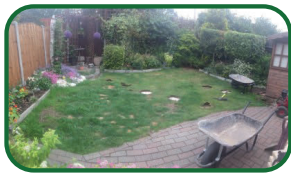
email - hello@wifiguy.co.uk




GRASSED UP .co.uk

“The Ultimate **Artificial** Grass”

- ✔ No Mowing
- ✔ No Watering
- ✔ No Mud
- ✔ Lowest Price
- ✔ Highest Quality



 : 07401 447905 / 01702 543781

 : sales@grassedup.co.uk



Proud Sponsors of Rochford Hundred Rugby Club

Rochford Hundred Squad 2017/18

STAFF & COACHES



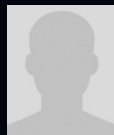
Chris Green
Director of Rugby



Michael Guess
Head Coach



Chris Garstin
Backs Coach



James Kellard
Defence Coach



Ryan Stephenson
Defence Coach



Danny Cleare
Attack Coach



Jamie Douglas
Strength & Conditioning



John Branch
Physiotherapist



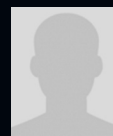
Graham Pratt
Manager



Adam Faherty
Commercial Manager



Kevin Anderson
Touch Judge



Billy Smith
Cameraman

FORWARDS *(sponsors under each name)*



Tom Corbet - Vice Capt.
Maguire Roofing Ltd



Luke Irvine
No Sponsor



Craig Strachan
Roof Aid



Michael Mark
No Sponsor



Liam Bass
Stanmore



Matthew Bevan
No Sponsor



Adam Ferrier
Fit Performance



Bradley Hughes
No Sponsor



Ricky Wiseman
Kelly Communication



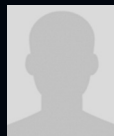
Stefan King
Connaughts Site Investigations



Reece Levy
Seabro Scaffolding Ltd



Josh Ridgway
No Sponsor



Lewis Brunger
No Sponsor



Samuel Fombo
John Drinkwater



Luke Court-Rind
John Drinkwater



Max Bacon
Stoneview Construction



Scott Horsburgh
Grassed Up



Calum Brackett
Ajay Builders



Alan Barker
Mike Drinkwater



Darren Spencer
The Spencers (UK) Limited



Daniel Sowter
Dancework Studio

Rochford Hundred Rugby Club – Telephone 01702 544021 – Website www.rochfordrugby.com

Chairman's Message

Good afternoon Ladies and Gentlemen,
welcome to Rochford Hundred Rugby Club,
I hope you enjoy your day with us.

Today we welcome Wanstead RFC to Magnolia Road. I am sure will be a well contested game with both teams chasing promotion this year. We saw a hard fought game earlier in the season with both teams having recruited well in the close season so today should be another epic game.

We have progressed to the Semi Final of the RFU Intermediate London & South-East Cup and will face Camberley away on 24th February. This again will be a tough game but one we must win if we are to progress. The club will be looking to lay on a coach for supporters so if you are interested please let me know so I can gather all the names we really want a big crowd on the day.

The Minis pitches are now moving in the right direction with quotes in and a submission made to the RFU for support as this is a £16,000 project.

This week also saw the coaches from all age groups invited to join a first team squad training session giving them all a chance to gain new ideas and share knowledge.

Sponsorship has real benefits which include advertising your company in the hand book, pitch side signs or on our social media sites. If you or anyone you know wants to be involved, please talk to Adam Faherty who will be willing to build a package to suit your budget his telephone number **07981 965669**.

FUTURE EVENTS

2nd March - Casino Night - Blackjack, Horse Racing, Roulette. Doors open 7pm with first races at 8pm. So if you like a little flutter then come along.

27th April - We have X Factor finalist Matt Linnen performing at the club, with special guests. Tickets are £10 per person and available from behind the bar or via Chris Green.

11th May - End of Season Awards Evening with guest speaker Dick Best. Please reserve your place via me at £20 per person

Lastly the club relies on Members paying membership every year so if you have not done so yet please ensure you make your donation or sign up today for direct debit forms behind the bar. Being a member has benefits on club house hire also reduced prices on alcohol.

Always remember that our beautiful game is built on **RESPECT** so jeering or bad language is not acceptable at any time.

Peter Van Den Broeck

Rochford Hundred Rugby Club - Chairman



HOME TEAM SQUAD

ROCHFORD HUNDRED

RUGBY FOOTBALL CLUB

No.	Name	Sponsor
1	Lewis Brunger	
2	Thomas Corbet	Maguire Roofing Ltd
3	Adam Ferrier	Fit Performance
4	Luke Court-Rind	John Drinkwater
5	Samuel Fombo	John Drinkwater
6	Daniel Sowter	Dancework Studio
7	David Rufai	Mike Drinkwater
8	Stuart Whatling	Madigangill
9	Ricki Gould	Alchemy Horse Racing Systems
10	Matthew Needham	Kelly Communication
11	Matthew Stewart (<i>Captain</i>)	M&C Enterprises
12	Tom Ashton	The Spencers (UK) Limited
13	Ben Johnson	
14	Mitchell Bennett	Comex 2000
15	Mark Billings	Alan Peacock
	<i>Substitutes</i>	
16	Ricky Wiseman	Kelly Communication
17	Daniel Allison	
18	Steven Jay	Peter Jay

For the latest club news visit our website:

WWW.ROCHFORDRUGBY.COM

AWAY TEAM SQUAD

WANSTEAD

RUGBY FOOTBALL CLUB

No.	Name
1	Not Supplied
2	Not Supplied
3	Not Supplied
4	Not Supplied
5	Not Supplied
6	Not Supplied
7	Not Supplied
8	Not Supplied
9	Not Supplied
10	Not Supplied
11	Not Supplied
12	Not Supplied
13	Not Supplied
14	Not Supplied
15	Not Supplied
<i>Substitutes</i>	
16	Not Supplied
17	Not Supplied
18	Not Supplied

Referee

Bandra Wekadapola (*London Society*)

Rochford Hundred Upcoming Events

London & South-East Semi-Final
Saturday 24th February

CAMBERLEY RFC vs ROCHFORD HUNDRED RFC

2:00pm kick off

Supporters coach being
arranged. Book your place via
Peter Van-Den-Broeck.

For up to the minute fixtures please visit our website:

WWW.ROCHFORDRUGBY.COM



INSTALCOM



O'CONNOR UTILITIES LTD
incorporating
INSTALCOM LTD

**TELECOMS
ELECTRIC
GAS
WATER
DIRECTIONAL DRILLING
RAILWAYS
MULTI UTILITY**

Instalcom Limited

Instalcom House, Borehamwood Industrial Park
Rowley Lane, Borehamwood, Herts WD6 5PZ
Tel: 0208 731 4600 Fax: 0202 731 4601
www.instalcom.co.uk info@instalcom.co.uk

MANCHESTER OFFICE

Unit 10, Sanfold Lane, Levenshulme, Manchester M19 3BJ
Tel: 0161 248 9922 Fax: 0161 248 9933

O'CONNOR UTILITIES LTD

Rochford Hundred Squad 2017/18

FORWARDS *(sponsors under each name)*



Stuart Whatling
Madigangill



Alex Harbrow
C&D Carpentry & Building



Jake Knowles
Stanmore



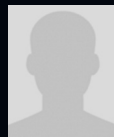
David Rufai
Mike Drinkwater



Andrew Bevan
JKS Group



Louis Warner
Richard Warner



Daniel Allison
No Sponsor



James Kellard
A&R Elite Scaffolding



Joseph Hurley
Elsie Hurley



Gregory Whight
Grassed Up



Matthew Stewart - Capt.
M&C Enterprises



Steven Jay
Peter Jay



Ricki Gould
Alchemy Horse Racing Systems



Tom Taylor
No Sponsor

BACKS *(sponsors under each name)*



Jack Doherty
Connaughts Site Investigations



Tom Ashton
The Spencers (UK) Limited



Jonathon Fitzpatrick
Madigangill



Louie Marshall
Dantel Construction



James Clark
No Sponsor



Mitchell Bennett
Comex 2000



Andy Baker
No Sponsor



Matthew White
Roof Aid



Matthew Needham
Kelly Communication



Josh Levy
Connaughts Site Investigations



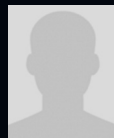
Dan Dieu-De-Bellefontaine
A-Class Asbestos



Simon Ashton
No Sponsor



Ty Ngaluaf
Comex 2000



Ben Johnson
No Sponsor



Marcus Spremulli
No Sponsor



Danny Cleare
Pest Cleare



Tom Pickering
Connaughts Site Investigations



Lee Wiseman
No Sponsor



Mark Billings
Alan Peacock



Sam Edwards
Associated Foreign Exchange

Rochford Hundred Rugby Club – Telephone 01702 544021 – Website www.rochfordrugby.com

Rochford Hundred Rugby Club

COURTS OF RAYLEIGH



FLOWERS OF DISTINCTION

*Bouquets – Weddings – Funerals – Corporate
Plants – Chocolates – Balloons – Gifts*

54 EASTWOOD ROAD, RAYLEIGH, SS6 7PJ
TELEPHONE: 01268 777983



COURTSOFRAYLEIGH.CO.UK



R & A Mechanical Services

Tel: **01702 524465**

22 Belgrave Road,
Leigh-on-Sea,
Essex SS9 5HE

Rochford Hundred Rugby Club – Telephone 01702 544021 – Website www.rochfordrugby.com

Rugby Coaching Report

Welcome to the first Director of Rugby report of what has been an outstanding season thus far.

We are very aware though, that there are no prizes given out in January and we have many tough assignments ahead starting today. Wanstead have also performed outstandingly well and for large parts of the game at their place the game was on the line and we need to be at it today make no mistake. We welcome Wanstead and wish them well after today's game.

This season, as mentioned has so far gone very well but it's important that Rochford's unique identity remains at the club. We are lucky to have an outstanding Chairman in Pete and have great support from Wayne Seaby as Vice-Chairman but we must build the club. We have appointed Mark Williams to over-see the strength and condition of the Academy and U16 players, an area that Michael Guess has worked on tirelessly, as he has with all youth coaches. We must become self-sufficient by producing our own players and Michael's a big part of what we are doing here.

Moving forward, the ultimate aim is to win the league this season and win the RFC Intermediate National Cup at Twickenham on 6th May. The Essex cup would be a bonus but the league then Twickenham in that order is priority. I'm sure many might disagree on that though!! We have one free weekend between now and April 14th if we progress to the National Final and it is very demanding

make no mistake. We need as many people here as possible supporting the club, home and away, especially for those National Cup games and top league encounters. Together we can hopefully take this club to the most successful era in its history. Words are easy though and the hard work starts now.

Enjoy the game.

Chris Green

Rochford Hundred Rugby Club -
Director of Rugby



Statistics & League Table

MOST APPEARANCES



1. **L Court-Rind** 16
Second Row
2. **M Stewart** 16
Outside Centre
3. **S Whatling** 16
Openside Flanker

MOST POINTS



1. **T Ashton** 149
Fly Half
2. **M Billings** 125
Full Back
3. **M Stewart** 100
Outside Centre

MOST TRIES



1. **M Billings** 25
Full Back
2. **M Bennett** 16
Left Wing
3. **S Whatling** 12
Openside Flanker

London 2 North East League

Pos	Team	P	W	D	L	PF	PA	+/-	TB	LB	Pts
1	Rochford Hundred	14	14	0	0	830	117	713	14	0	70
2	Wanstead	14	12	0	2	493	273	220	12	0	60
3	Sudbury	14	11	0	3	703	239	464	13	2	59
4	Norwich	14	10	0	4	462	204	258	9	2	52
5	Harlow	14	8	1	5	394	460	-66	7	0	41
6	Romford & Gidea Park	14	6	0	8	296	481	-185	4	1	29
7	Ipswich	14	5	0	9	267	515	-248	4	2	26
8	Epping Upper Clapton	14	6	0	8	272	408	-136	4	1	24
9	Chelmsford	14	3	0	11	235	567	-332	4	2	18
10	Cantabrigian	14	3	0	11	231	528	-297	3	2	17
11	Old Cooperians	14	3	1	10	274	375	-101	2	5	16
12	Woodford	14	2	0	12	283	573	-290	4	1	13

Rochford Hundred Rugby Club

The logo for JKS GROUP features the letters 'JKS' in a large, bold, black sans-serif font. Above and below the letters are two horizontal red bars with a diagonal cut on the left side. Below the 'JKS' text, the word 'GROUP' is written in a white, bold, sans-serif font inside a red rectangular box that also has a diagonal cut on the left side.

JKS
GROUP

CONNAUGHTS
SITE INVESTIGATION
LIMITED

35 GREEN LANE, LEIGH-ON-SEA, ESSEX SS9 5AP
TELEPHONE: 01702 528098
E-MAIL: CONNAUGHTS@AOL.COM

Rochford Hundred Rugby Club - Telephone 01702 544021 - Website www.rochfordrugby.com



MadiganGill

At **MadiganGill** we specialise in the supply of high quality labour and trades, site management staff, construction logistics and subcontract packages to the construction industry.

120 Moorgate
London
EC2M 6UR

0207 256 6222

Crawley Business Centre
Stephenson Way, Threebridges
West Sussex, RH10 1TN

0203 435 6923

enquiries@madigangill.co.uk
www.madigangill.co.uk

Rochford Hundred Rugby Club

**Free
Quote**

Just telephone or email
your requirements

pl@n
GRAPHIC DESIGN

**20%
OFF**

Any design work for
first time customers

For All Your Graphic Design Needs

Telephone: **01702 469035**

Email: plangd@live.com Web: www.plangraphicdesign.co.uk

27 Eros Avenue, Southend-on-Sea, Essex SS2 4GN

**THE CLUB SHOP IS
NOW AVAILABLE ONLINE**

PLEASE VISIT

**www.fentonsportsonline.com
[/rugby/562-rochford-hundred-rfc](http://www.fentonsportsonline.com/rugby/562-rochford-hundred-rfc)**

TO PLACE YOUR ORDER

*A stock of Shorts, Socks, Gum Shields, Studs and Club Ties
are available from the club.*

Rochford Hundred Rugby Club - Telephone 01702 544021 - Website www.rochfordrugby.com

Acknowledgments



COMEX2000
Network & Communication

Unit 3 Stadium Business Court, Millennium Way,
Pride Park, Derby DE24 8HP

Telephone **+44(0)1332 34 74 74**

Fax **+44(0)1332 34 47 88**

Belvedere

Windows - Doors - Conservatories

Rochford Hundred Rugby Football Club members wish to thank all of our friends who have supported us through the years and this coming season.

We are grateful for the many donations made by various friends and business associates.

SEABRO
IT Services



Stanmore Contractors Limited is one of the UK's leading interior and exterior fit-out subcontractors. With a £123M annual turnover 2017-18, Stanmore has worked with the majority of the largest Developers and Main Contractors in the South East of England.

Stanmore is therefore able to combine 50 years' experience in construction methods with acquired expertise to become one of the most recognised brand names in today's market. As a result, Stanmore is not only able to offer a range of drywall partitions, wall lining, screed and ceilings but also lightweight steel frames, insulated external render systems, through colour render, cladding systems, windows, doors, curtain walling structural steelwork, architectural metalwork and coping fascias.

Experience has seen Stanmore work on a diversity of construction projects, from residential houses and flats to complex schools, hospitals, community buildings, industrial warehousing and high-rise commercial / residential units.



**STANMORE
CONTRACTORS**

OVER

50

YEARS SERVICE
IN CONSTRUCTION



Stanmore Contractors Limited Stanmore House, Gyproc Business Park, Church Manonway, Erith, Kent DA8 1DE

T 01322 446446 F 01322 448448 E mail@stanmoreltd.co.uk www.stanmoreltd.co.uk

Registered office as above Registered in England no. 02754550 VAT no. 625560641



A Nationwide Telecommunications, Rail & Utility Service Provider

are delighted to support

Rochford Hundred Rugby Club 2017/2018



Kelly Group

Kelly House, Fourth Way, Wembley, Middlesex HA9 0LH

Tel: + 44 20 8424 0909 Fax: +44 203 770 4212

www.kelly.co.uk