



London  
Division 2  
NORTH EAST



# Rochford Hundred Rugby Football Club

*Versus*

# Old Cooperians RFC



**Saturday 10th March 2018 Kick Off 3.00pm**



SARACENS  
PARTNER CLUB

*Referee* - Joe Binfield (Gloucester Society)

*Ball Boys* - Under 13's

[WWW.ROCHFORDRUGBY.COM](http://WWW.ROCHFORDRUGBY.COM) • Main 1st XV Sponsors



To sponsor the club email:

**COMMERCIAL@ROCHFORDRUGBY.COM**

To hire the club email:

**FUNCTIONS@ROCHFORDRUGBY.COM**

To play for the club email:

**COACHING@ROCHFORDRUGBY.COM**

For up to date information join our Website at:

**WWW.ROCHFORDRUGBY.COM**

THE RUGBY PARK - MAGNOLIA ROAD - HAWKWELL - ESSEX - SS4 3AD



/RochfordRugby



@RochfordRugby



rochfordrugby

TELEPHONE

**01702 544021**

## Training nights

Seniors - Tuesdays and Thursdays 7pm

Academy - Thursdays 7pm

Youth (U19-U18) - Tuesdays 7pm

Ladies - Wednesdays 7pm

Youth (U16-U13) - Wednesdays 7pm

Girls - Wednesdays 7pm

Little Scrummers (Age 2-6) - Saturdays 10am

Mini (U12-U6) - Saturdays 10am

**Rochford Hundred Rugby Club - Telephone 01702 544021 - Website [www.rochfordrugby.com](http://www.rochfordrugby.com)**

# Rochford Hundred Rugby Club

Welcome to Rochford Hundred Rugby Club

## Our Club History

Rochford Hundred was the brainchild of John Roden and Ernie Mills and was first discussed in November 1961 when the two met at the White Hart in Hawkwell. John had played at Ilford Wanderers and Ernie was an Old Tottonian so both were keen to play on their own doorstep. The inaugural meeting was held on the 4th January 1962 at the Bull Inn and was attended by a small group. The club now needed a ground and the assistance of County Councilor, later Alderman, Bill Wright was sought. He was appointed Chairman and very quickly secured the use of Rocheway School which had been closed due to its proximity to Southend airport.

This of course gave the club changing rooms and rugby pitches immediately. To get players an advert was placed in the Southend Pictorial and no less than 45 replies were received. Old Westcliffians had seen the advert and invited the new committee to a beer and cheese evening at the Gables. From this Rochford secured a fixture and an introduction to the London fixture Exchange. The first fixture was in fact against Billericay and not Old Westcliffians however. The name of the club had been suggested by John Roden after he saw a poster by Rochford Hundred Licensed Victuallers Association in the White Hart. Rochford Hundred was after all the name of the district.

The club also managed to secure a clubhouse in the car park of the Horse & Groom thanks to Mrs Innell, the licensee, and quickly set to work to make it ready for use for season 1962/63, although it was in use from March 1962.

It is worth noting that the first games were played in March and April 1962 and that Bob Light was captain.

In Season 1962/63 the club fielded 2 senior teams and a Colts team which is remarkable for a first full season. It is recorded that over 70 fixtures were arranged for this first season. Tony Davies was the 1st XV captain in this season. The Colts team was made up of a number of players from Rayleigh Secondary Modern School (now Fitzwimarc) and Sweyne School. Indeed David Allen (then a 16 year old) remembers being at one of the formation meetings at the Bull when he was still at school.

The first few years were not particularly successful but things changed when the likes of Mike Treasure came onto the scene. He was captain in 1965/66 and 1966/67 and was our first full Essex cap. His team went unbeaten for 18 months and were one of the highest scoring teams in the country. He was fortunate in having players of the calibre of Peter Coster, who was a great centre. Regrettably, Peter died recently in America, where he had been living for many years.

With playing success there came a desire to move to our own ground and in 1968 Jim Sowter, who used to write a column in the local press, printed a story that the club wished to purchase a field in the Rochford district big enough for pitches and a clubhouse. He received a letter from the lady secretary of Southend Manor Football club stating that they had an option on 10 acres of land in Magnolia Road. They were unable to raise the money to proceed and suggested that we might like to take over the option. Jim arranged a meeting between her and Ernie Mills and Ernie liked what he saw and took up the option. The land cost £3,200 and the purchase was completed in March 1969. The Rugby Football Union provided a loan of £2,100 towards the purchase.

The lengthy process of obtaining finance, building the clubhouse and preparing the pitches could now be started. In September 1970 a grant of £5,592 was offered by the Ministry of Housing and local Government and this was supplemented by grants and loans from the Essex Playing Fields Association and the National Playing Fields Association. In July, 1971 the Club gave the go-ahead to Muggleton's to start building based on an estimated cost of £11,320 of which we had raised only £8,000. The clubhouse was officially opened by Dickie Jeeps in April, 1974 when the 1st XV played against a strong Eastern Counties XV.

In 1971/72, when Malcolm Fleming was captain, there were two memorable games both in the Essex Senior Cup. The first game was against Old Bancroftians when Dickie Kent, who played scrum half for England, and Howard Waller, who was a renowned sevens player for Richmond, were in the Bancroft side. Rochford won 21-6 in a tremendous match and demonstrated that they had joined the top echelons of Essex rugby. The next round was against Barking Park Modern Old Boys at Rocheway and a pulsating match was finally won by Barking 14-12. To those who were present these were two of the finest matches played by Rochford.

The pitches in those early days at Magnolia Road were frankly dreadful but over the years there has been considerable work on them and they are now adequate for the task, if not perfect. In the late 1980's and early 1990's the clubhouse was expanded substantially with new changing rooms a gym and a new clubroom and kitchen. Floodlights were also installed.

Our youth section has gone from strength to strength and provides players for our 1st XV and other club teams. In fact our current 1st XV is almost entirely made up of former youth players. We have a ladies and girls section which is unusual among Essex Clubs. The Club is currently playing in London 2 (North East) and we can look back on 50 years of activity with considerable satisfaction.

Rochford Hundred Rugby Club - Telephone 01702 544021 - Website [www.rochfordrugby.com](http://www.rochfordrugby.com)

# Rochford Hundred Rugby Club



**COMEX2000**  
Network & Communication

Unit 3 Stadium Business Court, Millennium Way,  
Pride Park, Derby DE24 8HP

Telephone +44(0)1332 34 74 74  
Fax +44(0)1332 34 47 88

## LEAGUE LUNCHES

10th March 2018

v **Old Cooperians**

7th April 2018 v **Norwich**

14th April 2018 v **Sudbury**

All members and friends are invited to attend any of the sponsored lunches at a cost of **£20.00** per head. Book your seats through **John Drinkwater** on **01702 204237, 07940 217899** or directly at the club. If you wish to be a match sponsor please email:

**[commercial@rochfordrugby.com](mailto:commercial@rochfordrugby.com)**



**07970 254222**  
**01708 453922**  
**[info@roofaid.co.uk](mailto:info@roofaid.co.uk)**



Rochford Hundred Rugby Club - Telephone 01702 544021 - Website [www.rochfordrugby.com](http://www.rochfordrugby.com)



# Help your vision last a lifetime.

**Book your Eye Test with an in-store expert.**

Find us on High Street, Rayleigh.

Call 01268 771148 or book online at [visionexpress.com](http://visionexpress.com)

**vision ~~ex~~press**

**VISION.TAKEN SERIOUSLY.**

Ask in-store for details.

# PLAYER PROFILE

## TOM CORBET

**NAME** – Thomas Corbet

**D.O.B** – 01/11/1987

**POSITION** – Hooker/Flanker

**NICKNAME** – Corbs

**WEIGHT** – 0.08 tone

**HEIGHT** – 16.75 hands

**FAVOURITE FOOD** – Gluten free

**FAVOURITE DRINK** – Gluten free liquid

**BEST RUGBY MEMORY** – Highest try scorer Rochford 1sts

**WORST RUGBY MEMORY** – Two relegations from London 1

**IF YOU HAD TO CHOOSE 3 PEOPLE TO GET STUCK IN A LIFT WITH. WHO ? WHY ?**

- 1 – Will Ferrell - very funny
- 2 – Bear Grylls - would probably find us something to eat or drink
- 3 – Rick Stein would probably make Bears food suggestions taste nice and a very interesting man

**FUNNIEST IN THE TEAM** – Craig Strachan

**WORST DRESSED** – Beero

**LONGEST IN THE SHOWER** – Sam Fombo



# Rugby Coaching Report

## Welcome to the Director of Rugby report.

Welcome to Coopers in what should be a difficult fixture against a team that I expect to get out of trouble. They have players with good experience and quality and I wish them well after today's game. For ourselves we have to dust ourselves off and get better after what was a crushing defeat in the National Cup. Winning well every week and not been tested at times was definitely a factor but I must say we were beaten by the better team. Having been involved in teams of a National 2 standard over the years they are definitely of that standard and I'm sure they will go on and win the competition.

We must learn though and embrace this experience as an opportunity to learn. We were never as great as some might of thought but consequently not as bad after one defeat all season. It's important to keep an even keel and keep a honesty to our work. Last week is a sharp reminder of this just like England's loss in Scotland last week. Good teams will always come back even stronger and I'm sure we will do that.

What motivates us for the rest of the season? Easy, winning a league first..... can we go unbeaten ..... can we avoid dropping a point all season? There are lots of targets within the end goal and we must draw motivation to win the league. How many people do this in their careers? Not many. So all to play for. Looks like the Essex Cup Semi Final against Westcliff will be played on Saturday 31st of March with our rearranged league game at Harlow on the 17th March. My understanding of the Westcliff

game is that it will be both teams 1st XV so should be a massive day locally. Plenty to look forward to.

Finally two events I'm directly involved in are the End of Season Awards Evening with Dick Best on the 11th May and Matt Linnen from X Factor on April 27th, tickets available behind the bar. These are selling fast so if you are coming please snap them up as quick as possible. Let's get behind the lads for the final push and make it the most impressive in our history.

*Chris Green*

Rochford Hundred Rugby Club  
- Director of Rugby





# TRY!

## The Wi-Fi Guy

**600% more facebook likes  
and check-ins for your business.**

**Increase your reach, drive  
customers to your door.**

**web - [www.wifiguy.co.uk](http://www.wifiguy.co.uk)**

**email - [hello@wifiguy.co.uk](mailto:hello@wifiguy.co.uk)**

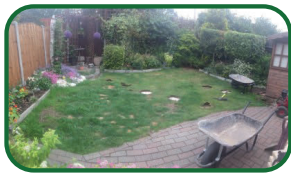





# GRASSED UP .co.uk

“The Ultimate **Artificial** Grass”

- ✔ No Mowing
- ✔ No Watering
- ✔ No Mud
- ✔ Lowest Price
- ✔ Highest Quality



 : 07401 447905 / 01702 543781

 : sales@grassedup.co.uk



**Proud Sponsors of Rochford Hundred Rugby Club**

# Rochford Hundred Squad 2017/18

## STAFF & COACHES



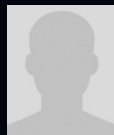
**Chris Green**  
Director of Rugby



**Michael Guess**  
Head Coach



**Chris Garstin**  
Backs Coach



**James Kellard**  
Defence Coach



**Ryan Stephenson**  
Defence Coach



**Danny Cleare**  
Attack Coach



**Jamie Douglas**  
Strength & Conditioning



**John Branch**  
Physiotherapist



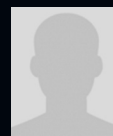
**Graham Pratt**  
Manager



**Adam Faherty**  
Commercial Manager



**Kevin Anderson**  
Touch Judge



**Billy Smith**  
Cameraman

## FORWARDS *(sponsors under each name)*



**Tom Corbet - Vice Capt.**  
Maguire Roofing Ltd



**Luke Irvine**  
No Sponsor



**Craig Strachan**  
Roof Aid



**Michael Mark**  
No Sponsor



**Liam Bass**  
Stanmore



**Matthew Bevan**  
No Sponsor



**Adam Ferrier**  
Fit Performance



**Bradley Hughes**  
No Sponsor



**Ricky Wiseman**  
Kelly Communication



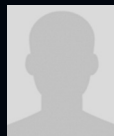
**Stefan King**  
Connaughts Site Investigations



**Reece Levy**  
Seabro Scaffolding Ltd



**Josh Ridgeway**  
No Sponsor



**Lewis Brunger**  
No Sponsor



**Samuel Fombo**  
John Drinkwater



**Luke Court-Rind**  
John Drinkwater



**Max Bacon**  
Stoneview Construction



**Scott Horsburgh**  
Grassed Up



**Calum Brackett**  
Ajay Builders



**Alan Barker**  
Mike Drinkwater



**Darren Spencer**  
The Spencers (UK) Limited



**Daniel Sowter**  
Dancework Studio

Rochford Hundred Rugby Club – Telephone 01702 544021 – Website [www.rochfordrugby.com](http://www.rochfordrugby.com)

# Chairman's Message

Good afternoon Ladies and Gentlemen,  
welcome to Rochford Hundred Rugby Club,  
I hope you enjoy your day with us.

Today we welcome Old Cooperians to Magnolia Road. It will be good to get back to focusing on the league and our push for promotion after all the excitement of the National Cup. I would like to thank everyone who made the journey which was a great day even if the result did not go the way we wanted. The lads gave everything on the day and also would like to thank all the traveling support.

The Minis pitches are now moving in the right direction with the exec agreeing to proceed with the development of the pitches for our Mini and youth sections. This will be mainly for the minis and allow us to hold festivals each year with the space it creates. It is really important that our minis facilities allow us to grow participation and who knows a future International.

We have had some really good news from our girls section we have found a coach for the under 13s so he will soon be attending the courses he needs. We have also had Tina Leslie, Tasmin Jackson and Catelyn Etherington on the success with England Schools.

Sponsorship has real benefits which include advertising your company in the hand book, pitch side signs or on our social media sites. If you or anyone you know wants to be involved, please talk to Adam Faherty who will be willing to build a package to suit your budget his telephone number **07981 965669**. Player sponsorship is coming around again so if you would like to sponsor a player from the squad please let us know.

## FUTURE EVENTS

**16th March – Family Games and Race night – FREE**  
Entry. Doors open 7pm with first races at 8pm. So if you like a little flutter then come along.

**27th April - We have X Factor finalist Matt Linnen performing at the club, with special guests.** Tickets are £10 per person and available from behind the bar or via Chris Green tickets selling fast please do not miss the chance to come and see him live.

**11th May – End of Season Awards Evening** with guest speaker Dick Best. Please reserve your place via me at £20 per person

Lastly the club relies on Members paying membership every year so if you have not done so yet please ensure you make your donation or sign up today for direct debit forms behind the bar. Being a member has benefits on club house hire also reduced prices on alcohol. We have increased our membership this year with many members enjoying the benefit this brings.

Always remember that our beautiful game is built on **RESPECT** so jeering or bad language is not acceptable at any time.

*Peter Van Den Broeck*

Rochford Hundred Rugby Club - Chairman



# HOME TEAM SQUAD

## ROCHFORD HUNDRED

RUGBY FOOTBALL CLUB

No.	Name	Sponsor
<b>1</b>	Josh Ridgeway	
<b>2</b>	Adam Ferrier	Fit Performance
<b>3</b>	Lewis Brunger	
<b>4</b>	Luke Court-Rind	John Drinkwater
<b>5</b>	Daniel Allison	
<b>6</b>	Stuart Whatling	Madigangill
<b>7</b>	Thomas Corbet	Maguire Roofing Ltd
<b>8</b>	Joseph Hurley	Elsie Hurley
<b>9</b>	Ricki Gould	Alchemy Horse Racing Systems
<b>10</b>	Matthew Needham	Kelly Communication
<b>11</b>	Mitchell Bennett	Comex 2000
<b>12</b>	Tom Ashton	The Spencers (UK) Limited
<b>13</b>	Ben Johnson	
<b>14</b>	Matthew Stewart ( <i>Captain</i> )	M&C Enterprises
<b>15</b>	Mark Billings	Alan Peacock
	<i>Substitutes</i>	
<b>16</b>	Ricky Wiseman	Kelly Communication
<b>17</b>	Samuel Fombo	John Drinkwater
<b>18</b>	Samuel Edwards	Associated Foreign Exchange

For the latest club news visit our website:

**[WWW.ROCHFORDRUGBY.COM](http://WWW.ROCHFORDRUGBY.COM)**

# AWAY TEAM SQUAD

## OLD COOPERIANS

RUGBY FOOTBALL CLUB

No.	Name
1	Not Supplied
2	Not Supplied
3	Not Supplied
4	Not Supplied
5	Not Supplied
6	Not Supplied
7	Not Supplied
8	Not Supplied
9	Not Supplied
10	Not Supplied
11	Not Supplied
12	Not Supplied
13	Not Supplied
14	Not Supplied
15	Not Supplied
<i>Substitutes</i>	
16	Not Supplied
17	Not Supplied
18	Not Supplied

*Referee*

Joe Binfield (*Gloucester Society*)

## Rochford Hundred Upcoming Events

Friday 16th March

## FAMILY GAMES AND RACE NIGHT

FREE Entry

Doors open 7pm with first races  
at 8pm. So if you like a little  
flutter then come along.

For up to the minute fixtures please visit our website:

**[WWW.ROCHFORDRUGBY.COM](http://WWW.ROCHFORDRUGBY.COM)**



**INSTALCOM**



O'CONNOR UTILITIES LTD  
incorporating  
INSTALCOM LTD

- TELECOMS**
- ELECTRIC**
- GAS**
- WATER**
- DIRECTIONAL DRILLING**
- RAILWAYS**
- MULTI UTILITY**

**Instalcom Limited**

Instalcom House, Borehamwood Industrial Park  
Rowley Lane, Borehamwood, Herts WD6 5PZ  
Tel: 0208 731 4600 Fax: 0202 731 4601  
www.instalcom.co.uk info@instalcom.co.uk

**MANCHESTER OFFICE**

Unit 10, Sanfold Lane, Levenshulme, Manchester M19 3BJ  
Tel: 0161 248 9922 Fax: 0161 248 9933

**O'CONNOR UTILITIES LTD**

# Rochford Hundred Squad 2017/18

## FORWARDS *(sponsors under each name)*



**Stuart Whatling**  
Madigangill



**Alex Harbrow**  
C&D Carpentry & Building



**Jake Knowles**  
Stanmore



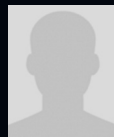
**David Rufai**  
Mike Drinkwater



**Andrew Bevan**  
JKS Group



**Louis Warner**  
Richard Warner



**Daniel Allison**  
No Sponsor



**James Kellard**  
A&R Elite Scaffolding



**Joseph Hurley**  
Elsie Hurley



**Gregory Whight**  
Grassed Up



**Matthew Stewart - Capt.**  
M&C Enterprises



**Steven Jay**  
Peter Jay



**Ricki Gould**  
Alchemy Horse Racing Systems



**Tom Taylor**  
No Sponsor

## BACKS *(sponsors under each name)*



**Jack Doherty**  
Connaughts Site Investigations



**Tom Ashton**  
The Spencers (UK) Limited



**Jonathon Fitzpatrick**  
Madigangill



**Louie Marshall**  
Dantel Construction



**James Clark**  
No Sponsor



**Mitchell Bennett**  
Comex 2000



**Andy Baker**  
No Sponsor



**Matthew White**  
Roof Aid



**Matthew Needham**  
Kelly Communication



**Josh Levy**  
Connaughts Site Investigations



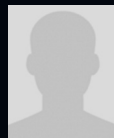
**Dan Dieu-De-Bellefontaine**  
A-Class Asbestos



**Simon Ashton**  
No Sponsor



**Ty Ngaluaf**  
Comex 2000



**Ben Johnson**  
No Sponsor



**Marcus Spremulli**  
No Sponsor



**Danny Cleare**  
Pest Cleare



**Tom Pickering**  
Connaughts Site Investigations



**Lee Wiseman**  
No Sponsor



**Mark Billings**  
Alan Peacock



**Sam Edwards**  
Associated Foreign Exchange

Rochford Hundred Rugby Club – Telephone 01702 544021 – Website [www.rochfordrugby.com](http://www.rochfordrugby.com)

# Rochford Hundred Rugby Club

COURTS OF RAYLEIGH



FLOWERS OF DISTINCTION

*Bouquets – Weddings – Funerals – Corporate  
Plants – Chocolates – Balloons – Gifts*

54 EASTWOOD ROAD, RAYLEIGH, SS6 7PJ  
TELEPHONE: 01268 777983



**COURTSOFRAYLEIGH.CO.UK**



# R & A Mechanical Services

Tel: **01702 524465**

22 Belgrave Road,  
Leigh-on-Sea,  
Essex SS9 5HE

**Rochford Hundred Rugby Club – Telephone 01702 544021 – Website [www.rochfordrugby.com](http://www.rochfordrugby.com)**



# PLAYER PROFILE

## SAM EDWARDS

**NAME** – Sam Edwards

**D.O.B** – 6/11/85

**POSITION** – Wing/Fullback/Front row

**NICKNAME** – Jonah Slomu

**WEIGHT** – 93kg

**HEIGHT** – 175cm

**FAVOURITE FOOD** – Pancakes

**FAVOURITE DRINK** – Guinness

**BEST RUGBY MEMORY** – Scoring a hat trick in Berkshire cup final

**WORST RUGBY MEMORY** – being chased around a changing room by my entire forward pack in an attempt to put an ice cube where I really didn't want it to go. (Please note - no successful attempts were made)

**IF YOU HAD TO CHOOSE 3 PEOPLE TO GET STUCK IN A LIFT WITH. WHO ? WHY ?**

- 1 – Ricky Gould - he would bore me to sleep in no time
- 2 – Kev Anderson - he always has either jelly beans or biltong with him
- 3 – Steve Jay - He would provide no practical benefits but would be upset if I didn't mention him

**FUNNIEST IN THE TEAM** – Me

**WORST DRESSED** – Not me

**LONGEST IN THE SHOWER** – Sam Fombo  
- there's a lot to wash



# Statistics & League Table

## MOST APPEARANCES



1. **L Court-Rind** 20  
Second Row
2. **S Whatling** 20  
Openside Flanker
3. **M Billings** 20  
Full Back

## MOST POINTS



1. **T Ashton** 193  
Fly Half
2. **M Billings** 155  
Full Back
3. **M Stewart** 105  
Outside Centre

## MOST TRIES



1. **M Billings** 31  
Full Back
2. **M Bennett** 20  
Left Wing
3. **S Whatling** 13  
Openside Flanker

## London 2 North East League

#	Team	Pl	HW	HD	HL	AW	AD	AL	W	D	L	F	A	Diff	Pts	Adj
1.	Rochford Hundred	17	8	0	0	9	0	0	17	0	0	998	143	855	85	17
2.	Sudbury	17	8	0	1	6	0	2	14	0	3	806	266	540	73	17
3.	Wanstead	17	7	0	2	5	1	2	12	1	4	544	372	172	64	14
4.	Norwich	17	7	0	2	4	0	4	11	0	6	548	280	268	57	12
5.	Harlow	17	6	0	2	2	1	6	8	1	8	453	539	-86	44	10
6.	Romford & Gidea Park	17	6	1	2	1	0	7	7	1	9	352	620	-268	36	6
7.	Ipswich	17	5	0	4	2	0	6	7	0	10	315	565	-250	34	6
8.	Epping Upper Clapton	17	5	0	3	1	0	8	6	0	11	352	540	-188	32	8
9.	Cantabrigian	17	3	0	5	2	0	7	5	0	12	307	605	-298	27	7
10.	Chelmsford	17	3	0	5	2	0	7	5	0	12	297	649	-352	27	7
11.	Woodford	17	2	0	6	2	0	7	4	0	13	369	653	-284	23	7
12.	Old Cooperians	17	2	1	6	2	0	6	4	1	12	328	437	-109	22	4

# Rochford Hundred Rugby Club



## *CONNAUGHTS SITE INVESTIGATION LIMITED*

35 GREEN LANE, LEIGH-ON-SEA, ESSEX SS9 5AP  
TELEPHONE: 01702 528098  
E-MAIL: CONNAUGHTS@AOL.COM

Rochford Hundred Rugby Club - Telephone 01702 544021 - Website [www.rochfordrugby.com](http://www.rochfordrugby.com)



# MadiganGill

At **MadiganGill** we specialise in the supply of high quality labour and trades, site management staff, construction logistics and subcontract packages to the construction industry.

120 Moorgate  
London  
EC2M 6UR

0207 256 6222

Crawley Business Centre  
Stephenson Way, Threebridges  
West Sussex, RH10 1TN

0203 435 6923

[enquiries@madigangill.co.uk](mailto:enquiries@madigangill.co.uk)  
[www.madigangill.co.uk](http://www.madigangill.co.uk)

# Rochford Hundred Rugby Club

**Free  
Quote**

Just telephone or email  
your requirements

**pl@n**  
GRAPHIC DESIGN

**20%  
OFF**

Any design work for  
first time customers

For All Your Graphic Design Needs

Telephone: **01702 469035**

Email: [plangd@live.com](mailto:plangd@live.com) Web: [www.plangraphicdesign.co.uk](http://www.plangraphicdesign.co.uk)

27 Eros Avenue, Southend-on-Sea, Essex SS2 4GN

**THE CLUB SHOP IS  
NOW AVAILABLE ONLINE**

PLEASE VISIT

**[www.fentonsportsonline.com](http://www.fentonsportsonline.com)  
[/rugby/562-rochford-hundred-rfc](http://www.fentonsportsonline.com/rugby/562-rochford-hundred-rfc)**

TO PLACE YOUR ORDER

*A stock of Shorts, Socks, Gum Shields, Studs and Club Ties  
are available from the club.*

**Rochford Hundred Rugby Club - Telephone 01702 544021 - Website [www.rochfordrugby.com](http://www.rochfordrugby.com)**

# Acknowledgments



**COMEX2000**  
Network & Communication

Unit 3 Stadium Business Court, Millennium Way,  
Pride Park, Derby DE24 8HP

Telephone **+44(0)1332 34 74 74**

Fax **+44(0)1332 34 47 88**

*Belvedere*

*Windows - Doors - Conservatories*

Rochford Hundred Rugby Football Club members wish to thank all of our friends who have supported us through the years and this coming season.

We are grateful for the many donations made by various friends and business associates.

**SEABRO**  
IT Services



**Stanmore Contractors Limited** is one of the UK's leading interior and exterior fit-out subcontractors. With a £123M annual turnover 2017-18, Stanmore has worked with the majority of the largest Developers and Main Contractors in the South East of England.

Stanmore is therefore able to combine 50 years' experience in construction methods with acquired expertise to become one of the most recognised brand names in today's market. As a result, Stanmore is not only able to offer a range of drywall partitions, wall lining, screed and ceilings but also lightweight steel frames, insulated external render systems, through colour render, cladding systems, windows, doors, curtain walling structural steelwork, architectural metalwork and coping fascias.

Experience has seen Stanmore work on a diversity of construction projects, from residential houses and flats to complex schools, hospitals, community buildings, industrial warehousing and high-rise commercial / residential units.



**STANMORE  
CONTRACTORS**

OVER

**50**

YEARS SERVICE  
IN CONSTRUCTION



**Stanmore Contractors Limited** Stanmore House, Gyproc Business Park, Church Manonway, Erith, Kent DA8 1DE

T 01322 446446 F 01322 448448 E mail@stanmoreltd.co.uk www.stanmoreltd.co.uk

Registered office as above Registered in England no. 02754550 VAT no. 625560641



A Nationwide Telecommunications, Rail & Utility Service Provider

are delighted to support

## Rochford Hundred Rugby Club 2017/2018



Kelly Group

Kelly House, Fourth Way, Wembley, Middlesex HA9 0LH

Tel: + 44 20 8424 0909 Fax: +44 203 770 4212

[www.kelly.co.uk](http://www.kelly.co.uk)