



Rochford Hundred Rugby Football Club

London
Division 2
NORTH EAST

Versus

Norwich RFC

Programme

£1

Donation



Wooden Spoon

The children's charity of rugby

Charity Supported at Today's Lunch

Saturday 25th March 2017 - Kick Off 3pm

Referee - Niamh Hennessy (London Society) *Mascots* - U7's *Ball Boys* - U14's

WWW.ROCHFORDRUGBY.COM

Main 1st XV Sponsors



Kelly Group



ICAP

GRASSED UP

To sponsor the club email:

COMMERCIAL@ROCHFORDRUGBY.COM

To hire the club email:

FUNCTIONS@ROCHFORDRUGBY.COM

To play for the club email:

COACHING@ROCHFORDRUGBY.COM

For up to date information join our Website at:

WWW.ROCHFORDRUGBY.COM

THE RUGBY PARK - MAGNOLIA ROAD - HAWKWELL - ESSEX SS4 3AD



/RochfordRugby

TELEPHONE

01702 544021



@RochfordRugby

Training nights

Seniors - Tuesdays and Thursday 7pm

Girls - Wednesdays 7pm

Youth (U19-U18) - Tuesdays 7pm

Ladies - Wednesdays 7pm

Youth (U17-U13) - Wednesdays 7pm

Mini (U12-U6) - Saturdays 10am

Little Scrummers (Age 2-6) - Saturdays 10am

Rochford Hundred Rugby Club

Welcome to Rochford Hundred Rugby Club

Our Club History

Rochford Hundred was the brainchild of John Roden and Ernie Mills and was first discussed in November 1961 when the two met at the White Hart in Hawkwell. John had played at Ilford Wanderers and Ernie was an Old Tottonian so both were keen to play on their own doorstep. The inaugural meeting was held on the 4th January 1962 at the Bull Inn and was attended by a small group. The club now needed a ground and the assistance of County Councilor, later Alderman, Bill Wright was sought. He was appointed Chairman and very quickly secured the use of Rocheway School which had been closed due to its proximity to Southend airport.

This of course gave the club changing rooms and rugby pitches immediately. To get players an advert was placed in the Southend Pictorial and no less than 45 replies were received. Old Westcliffians had seen the advert and invited the new committee to a beer and cheese evening at the Gables. From this Rochford secured a fixture and an introduction to the London fixture Exchange. The first fixture was in fact against Billericay and not Old Westcliffians however. The name of the club had been suggested by John Roden after he saw a poster by Rochford Hundred Licensed Victuallers Association in the White Hart. Rochford Hundred was after all the name of the district.

The club also managed to secure a clubhouse in the car park of the Horse & Groom thanks to Mrs Innell, the licensee, and quickly set to work to make it ready for use for season 1962/63, although it was in use from March 1962.

It is worth noting that the first games were played in March and April 1962 and that Bob Light was captain.

In Season 1962/63 the club fielded 2 senior teams and a Colts team which is remarkable for a first full season. It is recorded that over 70 fixtures were arranged for this first season. Tony Davies was the 1st XV captain in this season. The Colts team was made up of a number of players from Rayleigh Secondary Modern School (now Fitzwimarc) and Sweyne School. Indeed David Allen (then a 16 year old) remembers being at one of the formation meetings at the Bull when he was still at school.

The first few years were not particularly successful but things changed when the likes of Mike Treasure came onto the scene. He was captain in 1965/66 and 1966/67 and was our first full Essex cap. His team went unbeaten for 18 months and were one of the highest scoring teams in the country. He was fortunate in having players of the calibre of Peter Coster, who was a great centre. Regrettably, Peter died recently in America, where he had been living for many years.

With playing success there came a desire to move to our own ground and in 1968 Jim Sowter, who used to write a column in the local press, printed a story that the club wished to purchase a field in the Rochford district big enough for pitches and a clubhouse. He received a letter from the lady secretary of Southend Manor Football club stating that they had an option on 10 acres of land in Magnolia Road. They were unable to raise the money to proceed and suggested that we might like to take over the option. Jim arranged a meeting between her and Ernie Mills and Ernie liked what he saw and took up the option. The land cost £3,200 and the purchase was completed in March 1969. The Rugby Football Union provided a loan of £2,100 towards the purchase.

The lengthy process of obtaining finance, building the clubhouse and preparing the pitches could now be started. In September 1970 a grant of £5,592 was offered by the Ministry of Housing and local Government and this was supplemented by grants and loans from the Essex Playing Fields Association and the National Playing Fields Association. In July, 1971 the Club gave the go-ahead to Muggleton's to start building based on an estimated cost of £11,320 of which we had raised only £8,000. The clubhouse was officially opened by Dickie Jeeps in April, 1974 when the 1st XV played against a strong Eastern Counties XV.

In 1971/72, when Malcolm Fleming was captain, there were two memorable games both in the Essex Senior Cup. The first game was against Old Bancroftians when Dickie Kent, who played scrum half for England, and Howard Waller, who was a renowned sevens player for Richmond, were in the Bancroft side. Rochford won 21-6 in a tremendous match and demonstrated that they had joined the top echelons of Essex rugby. The next round was against Barking Park Modern Old Boys at Rocheway and a pulsating match was finally won by Barking 14-12. To those who were present these were two of the finest matches played by Rochford.

The pitches in those early days at Magnolia Road were frankly dreadful but over the years there has been considerable work on them and they are now adequate for the task, if not perfect. In the late 1980's and early 1990's the clubhouse was expanded substantially with new changing rooms a gym and a new clubroom and kitchen. Floodlights were also installed.

Our youth section has gone from strength to strength and provides players for our 1st XV and other club teams. In fact our current 1st XV is almost entirely made up of former youth players. We have a ladies and girls section which is unusual among Essex Clubs. The Club is currently playing in London 2 (North East) and we can look back on 50 years of activity with considerable satisfaction.

Rochford Hundred Rugby Club



COMEX2000
Network & Communication

Unit 3 Stadium Business Court, Millennium Way,
Pride Park, Derby DE24 8HP

Telephone +44(0)1332 34 74 74

Fax +44(0)1332 34 47 88

A SPECIAL THANK YOU

The 1st XV players and staff would like to thank everyone who has supported us this season. Your attendance at lunches, sponsorship, donations, travel to away games and membership of the club is really appreciated and we hope to see you all again next season.

If you wish to sponsor the club please email
commercial@rochfordrugby.com



We'll see you stay on top of your game

Visit Vision Express
Rayleigh for:

- Sports eyewear including Oakley
- Specialist sports lenses
- Free contact lens trial when you present this advert in-store*



*Terms and conditions apply, see in-store for details.
Brands may vary between stores and are subject to availability.

Book your eye test today
High Street,
Rayleigh.
01268 771148

vision **express**
We'll see you right



TRY!

The **Wi-Fi**
Guy

**600% more facebook likes
and check-ins for your business.**

**Increase your reach, drive
customers to your door.**

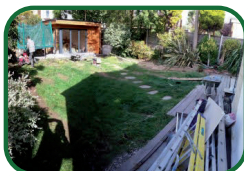
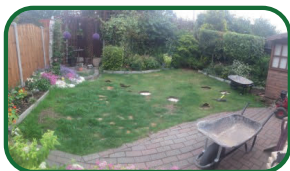
web - www.wifiguy.co.uk


email - hello@wifiguy.co.uk

GRASSED UP .co.uk

“The Ultimate **Artificial Grass**”

- ✓ No Mowing
- ✓ No Watering
- ✓ No Mud
- ✓ Lowest Price
- ✓ Highest Quality



 : 07401 447905 / 01702 543781

 : sales@grassedup.co.uk



Proud Sponsors of Rochford Hundred Rugby Club

Rochford Hundred Squad 2016/17

STAFF & COACHES



Michael Guess
Director of Rugby



Aaron Dunn
Strength & Conditioning



John Branch
Physiotherapist



Graham Pratt
Manager



Adam Faherty
Commercial Manager



Kevin Anderson
Touch Judge

FORWARDS *(sponsors under each name)*



Tom Corbet - Vice Capt.
ICAP



Luke Irvine
The Rams



Michael Mark
Kelly Communication



Liam Bass
Stanmore



Nik Grier
Spires Painting Contractors



Matthew Bevan
Kelan Solutions



Bradley Hughes
Connaughts Site Investigations Ltd



Reece Levy
No Sponsor



Ricky Wiseman
Colin Wiseman



Josh Illingworth
Comex 2000



Sam Tape
No Sponsor



Richard Mott
No Sponsor



Matt Basham
Larchwood Care



Robbie Duboux
C&G Gas and Heating Limited



Max Bacon
Kelan Solutions



Scott Turner
Comex 2000



Alex Harbow
C&D Carpentry and Building



Jake Knowles
Stanmore



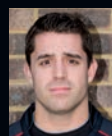
Andrew Bevan
Grassed Up



Louis Warner
Richard Warner



Scott Horsburgh
Grassed Up



Greg Whight
Graham Pratt

Chairman's Message

Good afternoon Ladies and Gentlemen,
welcome to Rochford Hundred Rugby Club,
I hope you enjoy your day with us.

Today we welcome Norwich to Magnolia road,
for our last home game of the season.

This also sees my first year as Chairman coming
to an end so I would like to thanks all the players
for their efforts this year. I would also like to
thank all the regulars who attended the lunches
and those who helped every week to clean the
club house changing rooms.

We have also been able to have food available
on training nights again this year thanks to Vicky
and Gail who volunteered to do this for all the
players.

On to today's game, I am expecting a tough
well contested game today after the close battle
earlier in the season. Our match day sponsor
today Nick Hyde so if you need independent
financial advice be sure to call Nick. Today's
Mascots are our under 7's and our under 14s
are ball boys. A big thanks to all the coaches,
managers and parents for their continued
support of these players and allowing them to
be part of today and hopefully the future of the
club.

To finish the club relies on Members paying
membership every year which comes with many
perks like free club house hire and reduced
prices on alcohol. Why not book your teams
BBQ at the club through the summer great way
to keep everyone together having fun in the off

season. Bouncy castle available for even more
fun speak to Mini section.

We are always looking for sponsors to help us
keep this great club moving forward. Should
you know anyone that would be willing
to sponsor our club, please pass any details
to Adam Faherty or email **commercial@
rochfordrugby.com**. All packages can be
tailored to suit.

Peter Van Den Broeck

Rochford Hundred Rugby Club - Chairman



HOME TEAM SQUAD

Rochford Hundred RFC

Director of Rugby - Michael Guess Physiotherapist - John Branch

<i>No.</i>	<i>Name</i>	<i>Sponsor</i>
1	Matthew Bevan	Kelan Solutions
2	Nik Grier	Spires Painting Contractors
3	Ricky Wiseman	Colin Wiseman
4	Greg Whight	Graham Pratt
5	Alex Harbrow	C&D Carpentry and Building
6	Tom Corbet	ICAP
7	David Rufai	
8	Louis Warner	Richard Warner
9	Jack Doherty	Connaughts Site Investigations Ltd
10	Steven Jay	Peter Jay
11	Matthew White	Baker Events
12	Matthew Stewart (<i>Captain</i>)	Seabro
13	Dan Dieu-De-Bellefontaine	A-Class Asbestos
14	Sam Edwards	Associated Foreign Exchange
15	Mark Billings	Alan Peacock
	<i>Substitutes</i>	
16	Reece Levy	
17	Ryan Stephenson	
18	Louie Marshall	John Drinkwater

Today's Lunch Sponsors

NICK HYDE

AWAY TEAM SQUAD

Norwich RFC

Coach - Jonny O'Brien

No.	Name
1	Pip Scott (<i>Captain</i>)
2	Phil Buckley
3	Ryan Bigland
4	Si Darby
5	Tom Lloyd
6	Josh Wilson
7	Simon Richards
8	Laurence Austin
9	Jonny Payne
10	Theo Elliott
11	Rob Micklethwaite
12	Robbie Bridgstock
13	Nick Austin
14	Richie Rhodes
15	Chris Parrott
	<i>Substitutes</i>
16	Stuart Seppings
17	Jake Wharton
18	Jonny O'Brien

Referee

Niamh Hennessy (*London Society*)

Rochford Hundred Upcoming Event

End of Season Awards Dinner

Friday 28th April. More details to follow.

London 2 North East League

Pos	Team	P	W	D	L	PF	PA	+/-	TB	LB	Pts
1	Diss	19	17	1	1	782	298	484	16	0	86
2	South Woodham Ferrers	19	16	0	3	597	278	319	14	3	81
3	Cantabrigian	19	11	1	7	492	355	137	12	2	60
4	Rochford & Glidea Park	19	11	0	8	474	474	0	10	2	56
5	Old Cooperians	19	11	1	7	492	428	64	8	0	54
6	Norwich	19	10	0	9	429	358	71	8	3	51
7	Epping Upper Clipton	19	9	2	8	412	461	-49	9	2	51
8	Rochford Hundred	19	8	0	11	470	463	7	10	4	46
9	Woodford	19	9	0	10	356	499	-143	4	3	43
10	Ipswich	19	6	1	12	403	482	-79	5	6	32
11	Holt	19	3	0	16	274	536	-262	1	7	20
12	Campton	19	0	0	19	256	805	-549	1	2	-2

Today's Match Ball Sponsor





INSTALCOM



O'CONNOR UTILITIES LTD
incorporating
INSTALCOM LTD

**TELECOMS
ELECTRIC
GAS
WATER
DIRECTIONAL DRILLING
RAILWAYS
MULTI UTILITY**

Instalcom Limited

Instalcom House, Borehamwood Industrial Park
Rowley Lane, Borehamwood, Herts WD6 5PZ
Tel: 0208 731 4600 Fax: 0202 731 4601
www.instalcom.co.uk info@instalcom.co.uk

MANCHESTER OFFICE

Unit 10, Sanfold Lane, Levenshulme, Manchester M19 3BJ
Tel: 0161 248 9922 Fax: 0161 248 9933

O'CONNOR UTILITIES LTD

Rochford Hundred Squad 2016/17

BACKS *(sponsors under each name)*



Matthew Stewart - Capt.
Seabro



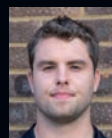
Steven Jay
Peter Jay



Harry Chipper
R D Carpentry Limited



Jack Doherty
Connaughts Site Investigations Ltd



Robert Prior
Kelly Communication



Louie Marshall
John Drinkwater



Jon Baker
Baker Events



Matthew White
Baker Events



Andy Baker
ICAP



Marcus Spremulli
Mike Drinkwater



Michael Stemp
Graham Pratt



Simon Ashton
Biochem Pest Control



Dan Dieu-De-Bellefontaine
A-Class Asbestos



Tom Pickering
Connaughts Site Investigations Ltd



Lee Wiseman
Colin Wiseman



Mark Billings
Alan Peacock



Samuel Edwards
Associated Foreign Exchange



Jonathon Fitzpatrick
No Sponsor

**Free
Quote**

Just telephone or email
your requirements

pl@n

GRAPHIC DESIGN

**20%
OFF**

Any design work for
first time customers

For All Your Graphic Design Needs

Telephone: **01702 469035**

Email: plangd@live.com Web: www.plangraphicdesign.co.uk
27 Eros Avenue, Southend-on-Sea, Essex SS2 4GN

Rochford Hundred Rugby Club

Networking • Structured Cabling • Access Control Specialists
KELAN Solutions Ltd
www.kelansolutions.co.uk

Telephone: 07973 694679 Email: kelan@f2s.com

Rochford Hundred Supporters Group

If Club Members wish to be part
of the official group that attends
the lunches at away matches
please contact John Drinkwater

01702 204237

Club Social Events 2016-2017

This season we are arranging more social events for the whole club, we welcome all member's and there guest's, from all age groups, to come along and support the club together.

INITIAL EVENTS

24th September 2016 **Live Music Session**

14th October 2016 **Race Night**

4th November 2016 **Fireworks Night**

17th December 2016

Club Xmas Lunch - Live Music Session

31st December 2016 **New Years Eve Party**

27th May 2017 **May Ball**

Add these dates to your diary, more information will follow. For more information please email

events@rochfordrugby.com



Andrew Murphy
CHARTERED ACCOUNTANTS

***For all of your accountancy
& taxation needs***

Free initial consultation

*Professional, efficient,
approachable and affordable -
we have the right balance*

Call 01702 542424

- 'out of hours' meetings always available

Andrew Murphy **FCA**
Sovereign House, 82 West Street,
Rochford, Essex SS4 1AS
(opposite Rochford Railway Station)

Email: enquiries@apmca.co.uk

Website: www.apmca.co.uk

Registered Auditors



Rochford Hundred Rugby Club

zoo-sport

Teamwear available at

www.fentonrugby.com

6 High Street, Brentwood, Essex CM14 4AB

01277 219438

**THE CLUB SHOP
WILL BE MOVING
ONLINE SOON**

MORE DETAILS TO FOLLOW

Acknowledgments



COMEX2000
Network & Communication

Unit 3 Stadium Business Court, Millennium Way,
Pride Park, Derby DE24 8HP

Telephone +44(0)1332 34 74 74

Fax +44(0)1332 34 47 88

Networking • Structured Cabling • Access Control Specialists
KELAN Solutions Ltd
www.kelansolutions.co.uk

Telephone: 07973 694679 Email: kelan@f2s.com

Rochford Hundred Rugby Football Club members wish to thank all of our friends who have supported us through the years and this coming season.

We are grateful for the many donations made by various friends and business associates.





Stanmore Contractors Limited is one of the UK's leading interior and exterior fit-out subcontractors. With a £119M annual turnover 2015-16, Stanmore has worked with the majority of the largest Developers and Main Contractors in the South East of England. Stanmore is therefore able to combine 50 years' experience in construction methods with acquired expertise to become one of the most recognised brand names in today's market.

As a result, Stanmore is not only able to offer a range of drywall partitions, wall lining, screed and ceilings but also lightweight steel frames, insulated external render systems, through colour render, cladding systems, windows, doors, curtain walling structural steelwork, architectural metalwork and coping fascias. Experience has seen Stanmore work on a diversity of construction projects, from residential houses and flats to complex schools, hospitals, community buildings, industrial warehousing and high-rise commercial / residential units.



STANMORE



Stanmore Contractors Limited Stanmore House, Gyproc Business Park, Church Manorway, Erith, Kent, DA8 1DE

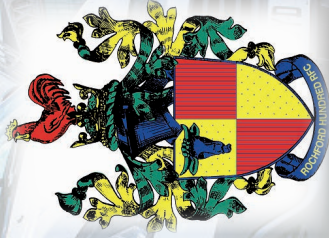
T 01322 446446 F 01322 448448 E mail@stanmoreltd.co.uk www.stanmoreltd.co.uk Registered office as above Registered in England no. 02754550 VAT no. 625560641



A Nationwide Telecommunications and Utility Service Provider

are delighted to support

Rochford Hundred Rugby Club 2016/2017



Kelly Group

Kelly House, Fourth Way, Wembley, Middlesex HA9 0LH

Tel: + 44 20 8424 0909 Fax: +44 203 770 4212

www.kelly.co.uk