



London
Division 2
NORTH EAST



Rochford Hundred Rugby Football Club

Versus

Romford & Gidea Park RC



Saturday 29th October 2016 - Kick Off 3pm

Referee - Simon Waite (London Society) *Mascots* - Under 9's

WWW.ROCHFORDRUGBY.COM

Main 1st XV Sponsors



GRASSED UP

To sponsor the club email:

COMMERCIAL@ROCHFORDRUGBY.COM

To hire the club email:

FUNCTIONS@ROCHFORDRUGBY.COM

To play for the club email:

COACHING@ROCHFORDRUGBY.COM

For up to date information join our Website at:

WWW.ROCHFORDRUGBY.COM

THE RUGBY PARK - MAGNOLIA ROAD - HAWKWELL - ESSEX SS4 3AD



/RochfordRugby

TELEPHONE

01702 544021



@RochfordRugby

Training nights

Seniors - Tuesdays and Thursday 7pm

Girls - Wednesdays 7pm

Youth (U19-U18) - Tuesdays 7pm

Ladies - Wednesdays 7pm

Youth (U17-U13) - Wednesdays 7pm

Mini (U12-U6) - Saturdays 10am

Little Scrummers (Age 2-6) - Saturdays 10am

Rochford Hundred Rugby Club - Telephone 01702 544021 - Website www.rochfordrugby.com

Rochford Hundred Rugby Club

Welcome to Rochford Hundred Rugby Club

Our Club History

Rochford Hundred was the brainchild of John Roden and Ernie Mills and was first discussed in November 1961 when the two met at the White Hart in Hawkwell. John had played at Ilford Wanderers and Ernie was an Old Tottonian so both were keen to play on their own doorstep. The inaugural meeting was held on the 4th January 1962 at the Bull Inn and was attended by a small group. The club now needed a ground and the assistance of County Councillor, later Alderman, Bill Wright was sought. He was appointed Chairman and very quickly secured the use of Rocheway School which had been closed due to its proximity to Southend airport.

This of course gave the club changing rooms and rugby pitches immediately. To get players an advert was placed in the Southend Pictorial and no less than 45 replies were received. Old Westcliffians had seen the advert and invited the new committee to a beer and cheese evening at the Gables. From this Rochford secured a fixture and an introduction to the London fixture Exchange. The first fixture was in fact against Billericay and not Old Westcliffians however. The name of the club had been suggested by John Roden after he saw a poster by Rochford Hundred Licensed Victuallers Association in the White Hart. Rochford Hundred was after all the name of the district.

The club also managed to secure a clubhouse in the car park of the Horse & Groom thanks to Mrs Innell, the licensee, and quickly set to work to make it ready for use for season 1962/63, although it was in use from March 1962.

It is worth noting that the first games were played in March and April 1962 and that Bob Light was captain.

In Season 1962/63 the club fielded 2 senior teams and a Colts team which is remarkable for a first full season. It is recorded that over 70 fixtures were arranged for this first season. Tony Davies was the 1st XV captain in this season. The Colts team was made up of a number of players from Rayleigh Secondary Modern School (now Fitzwimarc) and Swayne School. Indeed David Allen (then a 16 year old) remembers being at one of the formation meetings at the Bull when he was still at school.

The first few years were not particularly successful but things changed when the likes of Mike Treasure came onto the scene. He was captain in 1965/66 and 1966/67 and was our first full Essex cap. His team went unbeaten for 18 months and were one of the highest scoring teams in the country. He was fortunate in having players of the calibre of Peter Coster, who was a great centre. Regrettably, Peter died recently in America, where he had been living for many years.

With playing success there came a desire to move to our own ground and in 1968 Jim Sowter, who used to write a column in the local press, printed a story that the club wished to purchase a field in the Rochford district big enough for pitches and a clubhouse. He received a letter from the lady secretary of Southend Manor Football club stating that they had an option on 10 acres of land in Magnolia Road. They were unable to raise the money to proceed and suggested that we might like to take over the option. Jim arranged a meeting between her and Ernie Mills and Ernie liked what he saw and took up the option. The land cost £3,200 and the purchase was completed in March 1969. The Rugby Football Union provided a loan of £2,100 towards the purchase.

The lengthy process of obtaining finance, building the clubhouse and preparing the pitches could now be started. In September 1970 a grant of £5,592 was offered by the Ministry of Housing and local Government and this was supplemented by grants and loans from the Essex Playing Fields Association and the National Playing Fields Association. In July, 1971 the Club gave the go-ahead to Muggleton's to start building based on an estimated cost of £11,320 of which we had raised only £8,000. The clubhouse was officially opened by Dickie Jeeps in April, 1974 when the 1st XV played against a strong Eastern Counties XV.

In 1971/72, when Malcolm Fleming was captain, there were two memorable games both in the Essex Senior Cup. The first game was against Old Bancroftians when Dickie Kent, who played scrum half for England, and Howard Waller, who was a renowned sevens player for Richmond, were in the Bancroft side. Rochford won 21-6 in a tremendous match and demonstrated that they had joined the top echelons of Essex rugby. The next round was against Barking Park Modern Old Boys at Rocheway and a pulsating match was finally won by Barking 14-12. To those who were present these were two of the finest matches played by Rochford.

The pitches in those early days at Magnolia Road were frankly dreadful but over the years there has been considerable work on them and they are now adequate for the task, if not perfect. In the late 1980's and early 1990's the clubhouse was expanded substantially with new changing rooms a gym and a new clubroom and kitchen. Floodlights were also installed.

Our youth section has gone from strength to strength and provides players for our 1st XV and other club teams. In fact our current 1st XV is almost entirely made up of former youth players. We have a ladies and girls section which is unusual among Essex Clubs. The Club is currently playing in London 2 (North East) and we can look back on 50 years of activity with considerable satisfaction.

Rochford Hundred Rugby Club - Telephone 01702 544021 - Website www.rochfordrugby.com

Rochford Hundred Rugby Club



COMEX2000
Network & Communication

Unit 3 Stadium Business Court, Millennium Way,
Pride Park, Derby DE24 8HP

Telephone +44(0)1332 34 74 74
Fax +44(0)1332 34 47 88

LEAGUE LUNCHES

29th October 2016 v **Romford & Gidea Park**

19th November 2016 v **Old Cooperians**

10th December 2016 v **Epping Upper Clapton**

17th December 2016 v **South Woodham Ferrers**

14th January 2017 v **Cantabrigians**

11th February 2017 v **Woodford**

4th March 2017 v **Campion**

25th March 2017 v **Norwich**

All members and friends are invited to attend any of the sponsored lunches at a cost of **£20.00** per head (£18 for members). Book your seats through **John Drinkwater** on **01702 204237** or directly at the club. If you wish to be a match sponsor please email

commercial@rochfordrugby.com



Rochford Hundred Rugby Club - Telephone 01702 544021 - Website www.rochfordrugby.com

We'll see you stay on top of your game

Visit Vision Express
Rayleigh for:

- Sports eyewear including Oakley
- Specialist sports lenses
- Free contact lens trial when you present this advert in-store*



*Terms and conditions apply, see in-store for details.
Brands may vary between stores and are subject to availability.

Book your eye test today
High Street,
Rayleigh.
01268 771148

vision express
We'll see you right



TRY!

The Wi-Fi Guy

**600% more facebook likes
and check-ins for your business.**

**Increase your reach, drive
customers to your door.**

web - www.wifiguy.co.uk

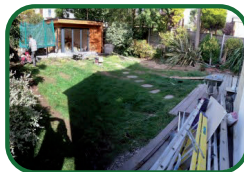
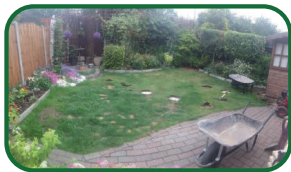
email - hello@wifiguy.co.uk




GRASSED UP .co.uk

“The Ultimate **Artificial** Grass”

- ✔ No Mowing
- ✔ No Watering
- ✔ No Mud
- ✔ Lowest Price
- ✔ Highest Quality



 : 07401 447905 / 01702 543781

 : sales@grassedup.co.uk



Proud Sponsors of Rochford Hundred Rugby Club

Rochford Hundred Squad 2016/17

STAFF & COACHES



Michael Guess
Director of Rugby



Aaron Dunn
Strength & Conditioning



John Branch
Physiotherapist



Graham Pratt
Manager



Adam Faherty
Commercial Manager



Kevin Anderson
Touch Judge

FORWARDS *(sponsors under each name)*



Tom Corbet - Vice Capt.
ICAP



Luke Irvine
The Rams



Michael Mark
Kelly Communication



Liam Bass
Stanmore



Nik Grier
Spires Painting Contractors



Matthew Bevan
Kelan Solutions



Bradley Hughes
Connaughts Site Investigations Ltd



Scott Chivers
ICAP



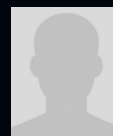
Ricky Wiseman
Colin Wiseman



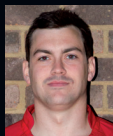
Josh Illingworth
Comex 2000



Sam Tape
No Sponsor



Scott Wheeler
Grassed Up



Richard Mott
No Sponsor



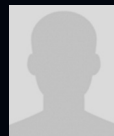
Matt Basham
Larchwood Care



Robbie Duboux
C&G Gas and Heating Limited



Max Bacon
Kelan Solutions



Scott Turner
Comex 2000



Darren Spencer
No Sponsor



Alex Harbrow
C&D Carpentry and Building



Jake Knowles
Stanmore



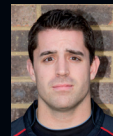
Andrew Bevan
No Sponsor



Louis Warner
Richard Warner



Scott Horsburgh
Grassed Up



Greg Whight
Graham Pratt

Chairman's Message

Good afternoon Ladies and Gentlemen,
welcome to Rochford Hundred Rugby Club,
I hope you enjoy your day with us.

I would like to start with thanking everyone here today for your continued support at our pre-match lunches. There are a couple of birthdays to celebrate this week, congratulations Colin and Gloria, hope you have a lovely day with us. This week, we have had an update on the road and our local MP has again challenged the council pushing for a clear update of when the road will be repaired. I have pinned the letter on the notice board.

Now on too today's game, which sees us welcome Dai and the Romford team to Magnolia Road.

I am fully expecting a tough, well contested game as they have always been that way in the past. Unfortunately we have struggled this year with many injuries, so have not had the best of starts to our season. What I have seen though, is a squad that have been fully committed to playing their very best each week.

So today please cheer on the lads from both teams and remember they work hard for you all to enjoy our game so respect them all at all times.

Today's mascots are the under 9's, I would like to thank the coaches and helpers from the team for all their time given to allow our children to play and enjoy this great game.

We also have our 3rd team playing at home

today they have had a real challenge this year with teams crying off on them. I would like to say thanks to Mike and Paddy for the continued drive and enthusiasm they have shown.

I would also like to take this opportunity to let all know we are always looking for more sponsors. Packages can be tailored to suit your budget again please contact myself or Adam Faherty if you would like to more information.

Peter Van Den Broeck

Rochford Hundred Rugby Club - Chairman



HOME TEAM SQUAD

Rochford Hundred RFC

Director of Rugby - Michael Guess Physiotherapist - John Branch

<i>No.</i>	<i>Name</i>	<i>Sponsor</i>
1	Michael Mark	Kelly Communication
2	Tom Corbet	ICAP
3	Ricky Wiseman	Colin Wiseman
4	Scott Wheeler	Grassed Up
5	Alex Harbrow	C&D Carpentry and Building
6	Scott Turner	Comex 2000
7	Nik Grier	Spires Painting Contractors
8	Greg Whight	Graham Pratt
9	Jack Doherty	Connaughts Site Investigations Ltd
10	Matthew Stewart (<i>Captain</i>)	Seabro
11	Sam Edwards	Associated Foreign Exchange
12	Dan Dieu-De-Bellefontaine	A-Class Asbestos
13	Marcus Spremulli	Mike Drinkwater
14	Tom Pickering	Connaughts Site Investigations Ltd
15	Mark Billings	Alan Peacock
<i>Substitutes</i>		
16	Michael Guess	
17	Matthew Bevan	Kelan Solutions
18	Steven Jay	Peter Jay

Ball Boys



Under 13's

AWAY TEAM SQUAD

Romford & Gidea Park RC

Coaches - Gary Cook, Dave Catchpole & Dave Gilmore Physiotherapist - Adam Whiteman

No. Name

- 1 Luke Izzat
- 2 Micky James (*Captain*)
- 3 Karl Prestoe
- 4 Peter O'Brien
- 5 Mathew Catchpole
- 6 Ian Semain
- 7 Charlie Wilkinson
- 8 Paul Bradley
- 9 Barney Saville
- 10 Tom Cameron
- 11 Jamie Harbour
- 12 Mitch Smith
- 13 Reece Parr
- 14 Keanen Titus
- 15 Jakey Jones
- Substitutes*
- 16 Max Irwin
- 17 Dave Gilmore
- 18 Steve Barfoot

Referee

Simon Waite (*London Society*)

Rochford Hundred Upcoming Events

FIREWORK NIGHT

Friday 4th November - Club opens from 6.30pm
fireworks start at 7.30pm

Entry is ONE LARGE FIREWORK - please no boxes of small fireworks. Includes: barbecue, cake stall, sweet stall, glow sticks, face painting and a big raffle!!

Pre Match Lunch vs Old Cooperians

Saturday 19th November - £20 per person
(£18 members) book your place via John Drinkwater on 01702 204237.

London 2 North East League

#	Team	Pt	HW	HD	HL	AW	AD	AL	W	D	L	F	A	Diff	Pts	Adj
1.	Diss	6	2	0	0	3	0	1	5	0	1	181	116	65	25	5
2.	Old Cooperians	6	3	0	0	2	0	1	5	0	1	172	87	85	22	2
3.	South Woodham Ferrers	4	2	0	0	2	0	0	4	0	0	147	57	90	17	1
4.	Cantabrigian	6	2	0	2	1	0	1	3	0	3	172	114	58	14	2
5.	Norwich	6	2	0	1	1	0	2	3	0	3	140	130	10	14	2
6.	Romford & Gidea Park	6	3	0	0	0	0	3	3	0	3	127	158	-31	14	2
7.	Epping Upper Clapton	5	2	0	1	1	0	1	3	0	2	139	123	16	13	1
8.	Woodford	5	3	0	1	0	0	1	3	0	2	94	113	-19	13	1
9.	Ipswich	5	1	0	1	1	0	2	2	0	3	144	124	20	10	2
10.	Rochford Hundred	6	1	0	2	0	0	3	1	0	5	141	197	-56	6	2
11.	Holt	5	0	0	1	1	0	3	1	0	4	76	145	-69	6	2
12.	Campion	6	0	0	3	0	0	3	0	0	6	78	247	-169	-5	-5

For up to the minute fixtures please visit our website:

WWW.ROCHFORDRUGBY.COM



INSTALCOM



O'CONNOR UTILITIES LTD
incorporating
INSTALCOM LTD

**TELECOMS
ELECTRIC
GAS
WATER
DIRECTIONAL DRILLING
RAILWAYS
MULTI UTILITY**

Instalcom Limited

Instalcom House, Borehamwood Industrial Park
Rowley Lane, Borehamwood, Herts WD6 5PZ
Tel: 0208 731 4600 Fax: 0202 731 4601
www.instalcom.co.uk info@instalcom.co.uk

MANCHESTER OFFICE

Unit 10, Sanfold Lane, Levenshulme, Manchester M19 3BJ
Tel: 0161 248 9922 Fax: 0161 248 9933

O'CONNOR UTILITIES LTD

Rochford Hundred Squad 2016/17

BACKS *(sponsors under each name)*



Matthew Stewart - *Capt.*
Seabro



Steven Jay
Peter Jay



Harry Chipper
R D Carpentry Limited



Jack Doherty
Connaughts Site Investigations Ltd



Robert Prior
Kelly Communication



Louie Marshall
John Drinkwater



Jon Baker
Baker Events



Matthew White
Baker Events



Andy Baker
No Sponsor



Marcus Spemulli
Mike Drinkwater



Michael Stemp
Graham Pratt



Simon Ashton
Biochem Pest Control



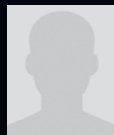
Dan Dieu-De-Bellefontaine
A-Class Asbestos



Tom Pickering
Connaughts Site Investigations Ltd



Lee Wiseman
Colin Wiseman



Mark Billings
Alan Peacock



Samuel Edwards
Associated Foreign Exchange



Jonathon Fitzpatrick
No Sponsor

**Free
Quote**

Just telephone or email
your requirements

pl@n

GRAPHIC DESIGN

**20%
OFF**

Any design work for
first time customers

For All Your Graphic Design Needs

Telephone: **01702 469035**

Email: plangd@live.com Web: www.plangraphicdesign.co.uk

27 Eros Avenue, Southend-on-Sea, Essex SS2 4GN

Rochford Hundred Rugby Club - Telephone 01702 544021 - Website www.rochfordrugby.com

Rochford Hundred Rugby Club

Networking • Structured Cabling • Access Control Specialists
KELAN Solutions Ltd
www.kelansolutions.co.uk

Telephone: 07973 694679 Email: kelan@f2s.com

Rochford Hundred Supporters Group

If Club Members wish to be part
of the official group that attends
the lunches at away matches
please contact John Drinkwater

01702 204237

Rochford Hundred Rugby Club - Telephone 01702 544021 - Website www.rochfordrugby.com

Club Social Events 2016-2017

This season we are arranging more social events for the whole club, we welcome all member's and there guest's, from all age groups, to come along and support the club together.

INITIAL EVENTS

24th September 2016 **Live Music Session**

14th October 2016 **Race Night**

4th November 2016 **Fireworks Night**

17th December 2016

Club Xmas Lunch - Live Music Session

31st December 2016 **New Years Eve Party**

27th May 2017 **May Ball**

Add these dates to your diary, more information will follow. For more information please email

events@rochfordrugby.com



Andrew Murphy

CHARTERED ACCOUNTANTS

***For all of your accountancy
& taxation needs***

Free initial consultation

*Professional, efficient,
approachable and affordable -
we have the right balance*

Call 01702 542424

- 'out of hours' meetings always available

Andrew Murphy **FCA**
Sovereign House, 82 West Street,
Rochford, Essex SS4 1AS
(opposite Rochford Railway Station)

Email: enquiries@apmca.co.uk

Website: www.apmca.co.uk

Registered Auditors



Rochford Hundred Rugby Club

zoo-sport

Teamwear available at
www.fentonrugby.com
6 High Street, Brentwood, Essex CM14 4AB
01277 219438

**THE CLUB SHOP
WILL BE MOVING
ONLINE SOON**

MORE DETAILS TO FOLLOW

Rochford Hundred Rugby Club - Telephone 01702 544021 - Website www.rochfordrugby.com

Acknowledgments



COMEX2000
Network & Communication

Unit 3 Stadium Business Court, Millennium Way,
Pride Park, Derby DE24 8HP

Telephone +44(0)1332 34 74 74

Fax +44(0)1332 34 47 88

Networking • Structured Cabling • Access Control Specialists
KELAN Solutions Ltd
www.kelansolutions.co.uk

Telephone: 07973 694679 Email: kelan@f2s.com

Rochford Hundred Rugby Football Club members wish to thank all of our friends who have supported us through the years and this coming season.

We are grateful for the many donations made by various friends and business associates.



Rochford Hundred Rugby Club - Telephone 01702 544021 - Website www.rochfordrugby.com



Stanmore Contractors Limited is one of the UK's leading interior and exterior fit-out subcontractors. With a £119M annual turnover 2015-16, Stanmore has worked with the majority of the largest Developers and Main Contractors in the South East of England. Stanmore is therefore able to combine 50 years' experience in construction methods with acquired expertise to become one of the most recognised brand names in today's market.

As a result, Stanmore is not only able to offer a range of drywall partitions, wall lining, screed and ceilings but also lightweight steel frames, insulated external render systems, through colour render, cladding systems, windows, doors, curtain walling structural steelwork, architectural metalwork and coping fascias. Experience has seen Stanmore work on a diversity of construction projects, from residential houses and flats to complex schools, hospitals, community buildings, industrial warehousing and high-rise commercial / residential units.



STANMORE



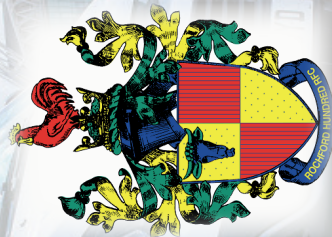
Stanmore Contractors Limited Stanmore House, Gyproc Business Park, Church Manorway, Erith, Kent DA8 1DE

T 01322 446446 F 01322 448448 E mail@stanmoreltd.co.uk www.stanmoreltd.co.uk Registered office as above Registered in England no. 02754550 VAT no. 625560641



A Nationwide Telecommunications and Utility Service Provider

are delighted to support
Rochford Hundred Rugby Club 2016/2017



Kelly Group
Kelly House, Fourth Way, Wembley, Middlesex HA9 0LH
Tel: + 44 20 8424 0909 Fax: +44 203 770 4212
www.kelly.co.uk