



NATIONAL  
LEAGUE  
South

Programme

£2

# Rochford Hundred Rugby Football Club

*Versus*

# Henley Hawks RFC



**Saturday 20<sup>th</sup> November 2021 Kick Off 3.00pm**



SARACENS  
PARTNER CLUB

*Referee* - To Be Confirmed

*Assistant Referees* - Phil Russell & Steve Milligan

*4th Official* - Simon Watkins *Ball Persons* - Under 14's

Main 1st XV Sponsors

**Seetec**  
SKILLS



Fairfield  

 **SWIFTCLEAN**  
Duct Cleaning & Legionella Risk Experts

 **LooseHeadz**

To sponsor the club email:

**COMMERCIAL@ROCHFORDRUGBY.COM**

To hire the club email:

**FUNCTIONS@ROCHFORDRUGBY.COM**

To play for the club email:

**COACHING@ROCHFORDRUGBY.COM**

For up to date information join our Website at:

**WWW.ROCHFORDRUGBY.COM**

THE RUGBY PARK - MAGNOLIA ROAD - HAWKWELL - ESSEX - SS4 3AD



/RochfordRugby



@RochfordRugby



rochfordrugby

TELEPHONE

**01702 544021**

## Training nights

Senior Men - Tuesdays & Thursdays 7pm

Senior Ladies - Thursdays 7pm

Academy - Tuesdays & Thursdays 7pm

Youth (Boys and Girls) - Wednesdays 7pm

Minis (U6-U12) - Saturdays 9am

Little Scrummers (2-6) - Saturdays 8.30am

**Rochford Hundred Rugby Club - Telephone 01702 544021 - Website [www.rochfordrugby.com](http://www.rochfordrugby.com)**

# Chairmans Welcome

## Today we welcome Henley Hawks to Magnolia Road, and very welcome they are to.

We are all aware of the tragic incident that that the Club has endured recently, and it is good to see them getting back in the groove, although I suspect the healing process will take some time. Everyone attached to Rochford Hundred send their condolences to your Club and the players family.

This is the first time our two clubs have met, and the recent results of Henley tell us we are in for one hell of a game today, but I also know our team are up for it and will give everything they have to try and get the win, just as they do week in and week out. Although we have lost the last three games, all of them are games we could and possibly should have won, so we know we are not far away of where we want to be.

I hope you all find our welcome off the pitch will be as warm as the intensity we hope to bring to each and every game we play. For some Clubs, this season in National 2 South does not really matter as there is no relegation, but it does matter to us at Rochford Hundred RFC. We are learning every week just how tough this league is as we all experience it or the very first time in our history.

We want to become a side that can beat anyone in this league on our day and we want to be a team that no one wants to play at Rochford. We are making great strides towards achieving that so that next season we know what we need to do to stay in this league, which I am extremely confident we will do.

I can't be with you today as I am at Twickenham but I know our Club President Mike Drinkwater will look affairs just as well as I can, if not better. Good luck to both sides today and may rugby be the winner, and may the game be played in the true spirit of rugby we all hold dear to our hearts.

Have a brilliant day today.

*Ray Stephenson*

ROCHFORD HUNDRED RUGBY CLUB  
- Chairman



# Rochford Hundred Rugby Club

## LEAGUE LUNCHEES

20th November 2021 v **HENLEY**

4th December 2021 v **REDRUTH**

18th December 2021 v **WESTCLIFF**

15th January 2022 v **BURY ST EDMUNDS**

29th January 2022 v **WORTHING**

12th February 2022 v **OLD ALBANIAN**

26th February 2022 v **BARNSTABLE**

12th March 2022 v **BARNES**

2nd April 2022 v **HINCKLEY**

16th April 2022 v **CLIFTON**

30th April 2022 v **ESHER**

All members and friends are invited to attend any of the sponsored lunches at a cost of **£25.00** per head. Book your seats through **John Drinkwater** on **01702 204237, 07940 217899** or directly at the club. If you wish to be a match sponsor please email:

**[commercial@rochfordrugby.com](mailto:commercial@rochfordrugby.com)**



- Telecommunications & Broadband
- Rail & Metro
- Fleet Services
- Utilities
- Civils
- Traffic Management
- Energy

40+ Operational Centres



Kelly Group, a nationwide Telecommunications, Rail & Utility Service Provider are proud to support

## Rochford Hundred Rugby Club 2021

Successfully trading for over 35 years Kelly Group has grown into one of the UK's leading telecommunications and rail infrastructure services and contracting companies

For more information please call 0208 424 0909  
visit [www.kelly.co.uk](http://www.kelly.co.uk) or e-mail [info@kelly.co.uk](mailto:info@kelly.co.uk)

Kelly House, Fourth Way,  
Wembley, Middlesex, HA9 0LH



# PLAYER PROFILE

## RED NEWBERRY

**NAME** – Red Newberry

**AGE** – 37

**HEIGHT** – 6ft 2

**WEIGHT** – 108kg

**POSITION** – Lock/Back row

### PREVIOUS CLUBS

– Woodford, Easten Provenice,  
Barking, Cambridge, Shelford  
and Hertford

### WHAT'S YOUR PRE MATCH MEAL?

– Oats, bagels and lots of coffee

**FAVOURITE DRINK?** – Coffee

**BEST RUGBY MEMORY?** – Playing at Twickenham

**WORST RUGBY MEMORY?** – Getting injured too  
many times

**MOST ANNOYING TEAMMATE?** – James Kellard well  
knowing him over 20 years anyone would start to annoy you

**ANY SUPERSTITIONS?** – Always tape my head just  
before I got out to play





# THE BMW iX3.

AVAILABLE FOR TEST DRIVE  
AT FAIRFIELD BMW.



Thanks to the standard-feature M Sport package in its new design, the new BMW iX3 M Sport looks sportier than ever. Aerodynamic elements and blue accents bring out the electric nature of the vehicle to its full effect. Whether for short or longer journeys – with a range of up to 285 miles\* and electricity consumption from 3.3 mi/kWh\*, the new BMW iX3 M Sport is ideally suited to every route.



**Scan the QR code to book a test drive today.**



**Fairfield BMW**

Arterial Road  
Leigh-on-Sea  
SS9 4XX  
01702 429471

Mpg (l/100km): Not applicable. CO<sub>2</sub> emissions: 0 g/km. Electric energy consumption (combined): 3.3mi/kWh. WLTP combines electric range in miles: 284 - 285.\*

† Test Drive subject to availability and applicant status. \*Measured according to the WLTP test cycle. Figures shown are for comparability purposes; only compare fuel consumption and CO<sub>2</sub> figures with other cars tested to the same technical procedures. These figures may not reflect real-life driving results, which will depend upon a number of factors including the accessories fitted (post registration), variations in weather, driving styles and vehicle load.



# GRASSED UP

## The Ultimate Artificial Grass

No Mud



No Watering



No Mowing



Best Quality



Supplied & Fitted



Lowest Price



Gardens / Sports and Leisure / Schools / Commercial



0800 699 0075



sales@grassedup.co.uk



www.grassedup.co.uk



Proud Sponsors of Rochford Hundred Rugby Club



ROCHFORD HUNDRED  
RUGBY CLUB

non-contact rugby  
for 1½ - 7yr olds

**BUILD CONFIDENCE**  
**ENJOY SPORT**  
**HAVE FUN!**

Come along and have a **TRY!**



**BOOK YOUR  
FREE TRIAL  
ONLINE TODAY**



book your **FREE TRIAL** at

**[www.littlescrummers.com](http://www.littlescrummers.com)**



**CONTACT US**  
MAIL@LITTLESCUMMERS.COM  
0330 088 1172  
FACEBOOK | INSTAGRAM | TWITTER



**ROCHFORD HUNDRED RUGBY CLUB**  
THE RUGBY PARK, MAGNOLIA RD  
ROCHFORD  
SS4 3AD



**CLASS TIMES**  
SATURDAYS  
ROCHFORD HUNDRED RUGBY CLUB  
8:30am - 11:15am

**ESSEX | HERTFORDSHIRE | CAMBRIDGESHIRE | EAST MIDLANDS**

# Rochford Hundred Squad 2021/22

## STAFF & COACHES



**Danny Cleare**  
Head Coach



**James Kellard**  
Forwards Coach



**Alex Brown**  
Scrum Coach



**James Tirrell**  
Specialist/Skills Coach



**Luke Brewster**  
Head of Strength & Conditioning



**Jon Branch**  
1st XV Physiotherapist



**Paul Head**  
Head Of Rugby



**Adam Faherty**  
1st XV Manager



**Graham Pratt**  
1st XV Registrar



**George Phelps-Knight**  
1st XV Videographer



**Redmond Newbury**  
Harts Head Coach



**Simon Watkins**  
4th Official

## FORWARDS *(sponsors under each name)*



**Aston Bevans-Royston**  
Vice Captain  
Delux Breeding Service



**Todd Bailey**  
Vice Captain  
Nick Jay



**Lewis Brunger**  
The Sheads and Betchleys



**Josh Ridgeway**  
No Sponsor



**Rob Gardner**  
Vince Brown



**Anthony Parish**  
Securitem Group



**Jordan Dyer**  
No Sponsor



**Ryan Wilkins**  
No Sponsor



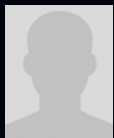
**Harry Phelps-Knight**  
No Sponsor



**Samuel Fombo**  
John Drinkwater & Big Fish Group



**Redmond Newbury**  
No Sponsor



**Najee Mundicha**  
No Sponsor



**Calum Brackett**  
No Sponsor



**Chris Shields**  
Matthew Shields



**Dan Peasnell**  
No Sponsor



**Harry Hudson**  
Simon Wakefield



**Craig Strachan**  
Dick Jones



**David Rufai**  
No Sponsor



**James Kellard**  
No Sponsor



**Mac Duaibe**  
Vince Brown



**Taylor Randall**  
Ambucar Marine Medical Services Ltd

Rochford Hundred Rugby Club – Telephone 01702 544021 – Website [www.rochfordrugby.com](http://www.rochfordrugby.com)



# Coaches Corner

Welcome Henley to Magnolia Road I hope you enjoy our hospitality, and I am sure a hard competitive game of rugby.

I would firstly like to send our condolences to you as a rugby club for the loss of Dave Hyde earlier in the season, such tragic news hits the rugby community hard let alone the club itself that has been affected. I know George Griffiths as an ex-teammate of Dave was particularly affected so here's hoping to a fantastic game in his memory.

After the first few weeks in this league, we have felt we have finally adapted to this level and have been competitive in every game since then and certainly should have won more games than we have. We have prided ourselves on being hardworking and hard to break down and our defensive stats will show that we are very much up there with the best in the league. Last Saturday however we wasn't at that level and it is something we have definitely addressed this week and something we are looking to put right today. We have made a few changes this week to freshen things up a bit and bring some energy from some of the younger players in the squad, so good luck to them lads and I am looking forward to seeing them play against one of the more established National League teams in the division.

We have a National League debut for Will Ferrier today so congratulations to him, Will has been training really well recently and has been scoring try's for fun in the 2's so has fully earned this debut today.

Our home form and performances have been really strong since Guernsey and the crowd have been a massive reason behind that. So please get behind the boys today and let's get that W to get us back on track.

Enjoy the Game.

*Danny Cleare*

ROCHFORD HUNDRED RUGBY CLUB  
- Head Coach



# HOME TEAM SQUAD

## ROCHFORD HUNDRED

### RUGBY FOOTBALL CLUB

No.	Name	Sponsor
<b>1</b>	Todd Bailey ( <i>Vice Captain</i> )	Nick Jay
<b>2</b>	Rob Gardner	Vince Brown
<b>3</b>	Aston Bevans-Royston ( <i>Captain</i> )	Delux Breeding Service
<b>4</b>	Dan Peasnell	No Sponsor
<b>5</b>	Redmond Newbury	No Sponsor
<b>6</b>	Taylor Randall	Ambucar Mariner Medical Services Ltd
<b>7</b>	David Rufai	No Sponsor
<b>8</b>	Mac Duaibe	Vince Brown
<b>9</b>	Jack Daly	Peter Jay
<b>10</b>	George Elliott	Ian Brown
<b>11</b>	George Griffiths	Zing Mortgages
<b>12</b>	Matthew Needham	No Sponsor
<b>13</b>	Damien Brambley	Mike Head
<b>14</b>	Jake Spivey	FRONT - architecture
<b>15</b>	Mark Billings	Alan Peacock
<i>Substitutes</i>		
<b>16</b>	Josh Ridgway	No Sponsor
<b>17</b>	Jordan Dyer	No Sponsor
<b>18</b>	Craig Strachan	Dick Jones
<b>19</b>	Sam Cappaert	Burman Recruitment
<b>20</b>	Will Ferrier	No Sponsor

To sponsor a lunch email:

**[commercial@rochfordrugby.com](mailto:commercial@rochfordrugby.com)**

# AWAY TEAM SQUAD

## HENLEY HAWKS

RUGBY FOOTBALL CLUB

No.	Name
1	Brad Cook
2	Tom Emery ( <i>Pack Leader</i> )
3	Rory Mason
4	Jake Albon
21	Ben Harrison
6	Sam Lunnon
7	Tom Hall
8	Alex Bradley
9	Toby Gilbey
10	Joe Butler
11	George Wood
12	Guy Rawsthorn
13	George Amphlett
14	Reuben Norvill
15	Cail Cookland
	<i>Substitutes</i>
16	Charlie Hughes
17	Ollie Frostick
18	Will Bordill
19	Marcus Lowe
20	Monty Bradbury

## Rochford Hundred Upcoming Events

### Christmas Jumper Day

Saturday

18<sup>th</sup> December

### New Years Eve Party

Friday

31<sup>st</sup> December

For the latest club news visit our website:

**[WWW.ROCHFORDRUGBY.COM](http://WWW.ROCHFORDRUGBY.COM)**



^  
NOW OPEN  
v

> NEW

BAR  
HOTEL  
RESTAURANT  
TERRACE



lacedemontriond.com



@lac.de.montriond



# Rochford Hundred Squad 2021/22

## BACKS *(sponsors under each name)*



**Sonny Gay** captain  
Mike Drinkwater



**Ricki Gould**  
Matt Stewart



**Jack Daly**  
Peter Jay



**Steven Jay**  
No Sponsor



**Jack Doherty**  
No Sponsor



**Jake Spivey**  
FRONT - architecture



**Dominic McDonald**  
No Sponsor



**George Elliott**  
Ian Brown



**Sam Cappaert**  
Burman Recruitment



**George Griffiths**  
Zing Mortgages



**Will Ferrier**  
No Sponsor



**Louie Marshall**  
No Sponsor



**Brayden Flannery**  
No Sponsor



**Matthew Needham**  
No Sponsor



**Wouter Roters**  
No Sponsor



**Danny Cleare**  
No Sponsor



**Tom Pickering**  
No Sponsor



**Damien Brambley**  
Mike Head



**Mark Billings**  
Alan Peacock



**Chris Dudman**  
Jim Bentley

Providing high quality video analysis at an affordable rate to all clubs

  
**ProSportsAnalysis**

Mobile: 07825 185633

Email: [info@prosportsanalysis.com](mailto:info@prosportsanalysis.com)





# TEST DRIVE THE MINI ELECTRIC.†



If you're looking for a car that's all torque, as well as action, then let us introduce the latest MINI Electric. It feels better than ever, with immediate oomph thanks to instant torque. And it looks better than ever too. With a sharper, sleeker update to its legendary MINI look and, of course, that MINI Electric feeling.

Scan the QR code to book a test drive



**Fairfield MINI**  
Arterial Road  
Leigh-on-Sea  
SS9 4XX  
01702 429472



\*Mpg (l/100km): Not applicable. CO<sub>2</sub> emissions: 0 g/km. Electric energy consumption (weighted): 3.9 – 4.1 Miles/kwh (15.9 – 15.2 kwh/100 km).  
Electric range: 3.9-4.1 miles/kwh (15.9-15.2 kwh/100km)

† Test Drive subject to availability and applicant status. \*Measured according to the WLTP test cycle. Figures shown are for comparability purposes; only compare fuel consumption and CO<sub>2</sub> figures with other cars tested to the same technical procedures. These figures may not reflect real-life driving results, which will depend upon a number of factors including the accessories fitted (post registration), variations in weather, driving styles and vehicle load. All figures relate to vehicles with 6-speed manual transmission.



> NEW

BAR  
HOTEL  
RESTAURANT  
TERRACE

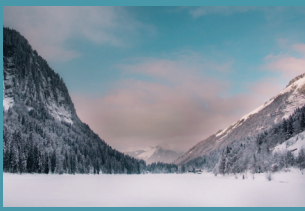
^  
NOW  
OPEN  
v



lacedemontriond.com



@lac.de.montriond





 zing mortgages

# WHEN YOU NEED A SAFE PAIR OF HANDS...

**Matt Barber is a loyal member of RHRFC and ex 1<sup>st</sup> team player providing quality advice on the following:**

**MORTGAGES • REMORTGAGES • BUY TO LETS • INCOME PROTECTION  
FIRST TIME BUYERS • LIFE PROTECTION • CRITICAL ILLNESS COVER**



**07967 105 360**

**zing-mortgages.co.uk**

**matt.barber@zing-mortgages.co.uk**



# Compliance through teamwork



## Air

Ventilation cleaning & testing to TR19® & BS EN 15780; fire damper testing & IAQ monitoring



## Water

L8 Legionella control (ACOP) & water tank cleaning



## Fire

Kitchen extract cleaning to TR19® Grease & grease trap cleaning



# SWIFTCLEAN

Duct Cleaning & Legionella Risk Experts

You need a good team around you to achieve good results. We work with building managers and FM companies helping them to gain legal compliance.

Call now for a FREE quote & technical advice - NATIONWIDE

# 0800 243 471

[www.swiftclean.co.uk](http://www.swiftclean.co.uk)





# **LooseHeadz**

## **#TackleTheStigma**



### ***The Rugby Brand That Gives Back***

***Help us to put a mental health lead in every rugby club.***

***We are here to #TackleTheStigma around mental health. Together, we can start the conversation that inspires a movement towards better mental wellbeing. 100% of the profit from every purchase of LooseHeadz rugby clothing and apparel helps to fund the LooseHeadz Foundation (charity number #1193051) and our campaign to put a mental health lead in every club.***

***Join the movement @ [LooseHeadz.co.uk/RUOK](https://www.looseheadz.co.uk/ruok)***





# Rochford Hundred Rugby Club

Welcome to Rochford Hundred Rugby Club

## Our Club History

Rochford Hundred was the brainchild of John Roden and Ernie Mills and was first discussed in November 1961 when the two met at the White Hart in Hawkwell. John had played at Ilford Wanderers and Ernie was an Old Tottonian so both were keen to play on their own doorstep. The inaugural meeting was held on the 4th January 1962 at the Bull Inn and was attended by a small group. The club now needed a ground and the assistance of County Councillor, later Alderman, Bill Wright was sought. He was appointed Chairman and very quickly secured the use of Rocheway School which had been closed due to its proximity to Southend airport.

This of course gave the club changing rooms and rugby pitches immediately. To get players an advert was placed in the Southend Pictorial and no less than 45 replies were received. Old Westcliffians had seen the advert and invited the new committee to a beer and cheese evening at the Gables. From this Rochford secured a fixture and an introduction to the London fixture Exchange. The first fixture was in fact against Billericay and not Old Westcliffians however. The name of the club had been suggested by John Roden after he saw a poster by Rochford Hundred Licensed Victuallers Association in the White Hart. Rochford Hundred was after all the name of the district.

The club also managed to secure a clubhouse in the car park of the Horse & Groom thanks to Mrs Innell, the licensee, and quickly set to work to make it ready for use for season 1962/63, although it was in use from March 1962.

It is worth noting that the first games were played in March and April 1962 and that Bob Light was captain.

In Season 1962/63 the club fielded 2 senior teams and a Colts team which is remarkable for a first full season. It is recorded that over 70 fixtures were arranged for this first season. Tony Davies was the 1st XV captain in this season. The Colts team was made up of a number of players from Rayleigh Secondary Modern School (now Fitzwimarc) and Sweyne School. Indeed David Allen (then a 16 year old) remembers being at one of the formation meetings at the Bull when he was still at school.

The first few years were not particularly successful but things changed when the likes of Mike Treasure came onto the scene. He was captain in 1965/66 and 1966/67 and was our first full Essex cap. His team went unbeaten for 18 months and were one of the highest scoring teams in the country. He was fortunate in having players of the calibre of Peter Coster, who was a great centre. Regrettably, Peter died recently in America, where he had been living for many years.

With playing success there came a desire to move to our own ground and in 1968 Jim Sowter, who used to write a column in the local press, printed a story that the club wished to purchase a field in the Rochford district big enough for pitches and a clubhouse. He received a letter from the lady secretary of Southend Manor Football club stating that they had an option on 10 acres of land in Magnolia Road. They were unable to raise the money to proceed and suggested that we might like to take over the option. Jim arranged a meeting between her and Ernie Mills and Ernie liked what he saw and took up the option. The land cost £3,200 and the purchase was completed in March 1969. The Rugby Football Union provided a loan of £2,100 towards the purchase.

The lengthy process of obtaining finance, building the clubhouse and preparing the pitches could now be started. In September 1970 a grant of £5,592 was offered by the Ministry of Housing and local Government and this was supplemented by grants and loans from the Essex Playing Fields Association and the National Playing Fields Association. In July, 1971 the Club gave the go-ahead to Muggleton's to start building based on an estimated cost of £11,320 of which we had raised only £8,000. The clubhouse was officially opened by Dickie Jeeps in April, 1974 when the 1st XV played against a strong Eastern Counties XV.

In 1971/72, when Malcolm Fleming was captain, there were two memorable games both in the Essex Senior Cup. The first game was against Old Bancroftians when Dickie Kent, who played scrum half for England, and Howard Waller, who was a renowned sevens player for Richmond, were in the Bancroft side. Rochford won 21-6 in a tremendous match and demonstrated that they had joined the top echelons of Essex rugby. The next round was against Barking Park Modern Old Boys at Rocheway and a pulsating match was finally won by Barking 14-12. To those who were present these were two of the finest matches played by Rochford.

The pitches in those early days at Magnolia Road were frankly dreadful but over the years there has been considerable work on them and they are now adequate for the task, if not perfect. In the late 1980's and early 1990's the clubhouse was expanded substantially with new changing rooms a gym and a new clubroom and kitchen. Floodlights were also installed.

Our youth section has gone from strength to strength and provides players for our 1st XV and other club teams. In fact our current 1st XV is almost entirely made up of former youth players. We have a ladies and girls section which is unusual among Essex Clubs. The club is currently playing in National League 2 South and we can look back on 60 years of activity with considerable satisfaction.

Rochford Hundred Rugby Club – Telephone 01702 544021 – Website [www.rochfordrugby.com](http://www.rochfordrugby.com)

# Acknowledgments

Rochford Hundred Rugby Football Club members wish to thank all of our friends who have supported us through the years and this coming season.

We are grateful for the many donations made by various friends and business associates.



**REFLEXIONS COMPLEMENTARY  
THERAPIES & BEAUTY**

**Pampering, Relaxation, Tranquility**

**Based near Hockley Train Station, offering;**

- Massage \* Pregnancy Massage \*
- Reflexology \* Indian Head Massage\* Facials \*
- Dermaplane Facials \* Microdermabrasion \*
- Mesotherapy \* Microneedling \* Chemical Peel \*
- LED Light Therapy \* Manicure \* Pedicure \*
- Gel Polish \* Gel Extensions \*Waxing \* Tinting \*
- Lash Lift & Tint \* Semi Permanent Eyebrows \*
- Skin Tag Removal \* Plasma Pen Skin Tightening \*
- Brow Lamination \* Ladies 'at Home' Pamper Party \*
- Special Occasion Hair Up \*

Tel; 07931112086  
E-Mail; nikki-reflexions@hotmail.com



Rochford Hundred Rugby Club - Telephone 01702 544021 - Website [www.rochfordrugby.com](http://www.rochfordrugby.com)



# design 4 print & signage

## Print Signage Workwear

banners • posters • leaflets • vinyl • brochures • tickets • pull-up banners • programmes  
newsletters • snap frames • a boards • chalk boards • signage • exhibition stands  
correx boards • tent cards • business cards • menus • stationery • artwork & design  
foamex boards • folders • letterheads • invoice pads • vehicle wrapping • shop fascias  
booklets • compliment slips • ncr books • pur brochures • embroidery & printed uniforms

✉ [sales@design4print.org](mailto:sales@design4print.org)

🌐 [www.design4print.org](http://www.design4print.org)

👍 Design 4 Print & Signage

Vikings Way, Thames Industrial Estate,  
Canvey Island, Essex SS8 0PB

☎ **01268 510555**

## pl@n GRAPHIC DESIGN For All Your Graphic Design Needs

**Free  
Quote**

Just Telephone or Email  
Your Requirements

Logos  
Magazines  
Adverts  
Stationery  
Leaflets  
Brochures  
Posters

**Call  
Today**

Fast Response  
& Fast Turnaround

Telephone: **01702 469035**

Email: [plangd@live.com](mailto:plangd@live.com) Web: [www.plangraphicdesign.co.uk](http://www.plangraphicdesign.co.uk)

27 Eros Avenue ■ Southend-on-Sea ■ Essex ■ SS2 4GN  Find us on facebook

**Rochford Hundred Rugby Club - Telephone 01702 544021 - Website [www.rochfordrugby.com](http://www.rochfordrugby.com)**

**Seetec**  
SKILLS

**Start your career the smart way**  
with an apprenticeship



- Earn a wage
- Get on-the-job training
- Gain industry skills

**seetec.co.uk**



Education & Skills  
Funding Agency