



# Rochford Hundred Rugby Football Club

London  
Division 2  
NORTH EAST

*Versus*

## Holt Rugby Club

Programme

**£1**

Donation



**Saturday 8th October 2016 - Kick Off 3pm**

*Referee* - Adam Hughes (Midlands Society) *Mascots* - Under 12's

**[WWW.ROCHFORDRUGBY.COM](http://WWW.ROCHFORDRUGBY.COM)**

Main 1st XV Sponsors



Kelly Group



ICAP

**GRASSED UP**

To sponsor the club email:

**COMMERCIAL@ROCHFORDRUGBY.COM**

To hire the club email:

**FUNCTIONS@ROCHFORDRUGBY.COM**

To play for the club email:

**COACHING@ROCHFORDRUGBY.COM**

For up to date information join our Website at:

**WWW.ROCHFORDRUGBY.COM**

THE RUGBY PARK - MAGNOLIA ROAD - HAWKWELL - ESSEX SS4 3AD



/RochfordRugby

TELEPHONE

**01702 544021**



@RochfordRugby

## **Training nights**

Seniors - Tuesdays and Thursday 7pm

Girls - Wednesdays 7pm

Youth (U19-U18) - Tuesdays 7pm

Ladies - Wednesdays 7pm

Youth (U17-U13) - Wednesdays 7pm

Mini (U12-U6) - Saturdays 10am

Little Scrummers (Age 2-6) - Saturdays 10am

# Rochford Hundred Rugby Club

Welcome to Rochford Hundred Rugby Club

## Our Club History

Rochford Hundred was the brainchild of John Roden and Ernie Mills and was first discussed in November 1961 when the two met at the White Hart in Hawkwell. John had played at Ilford Wanderers and Ernie was an Old Tottonian so both were keen to play on their own doorstep. The inaugural meeting was held on the 4th January 1962 at the Bull Inn and was attended by a small group. The club now needed a ground and the assistance of County Councilor, later Alderman, Bill Wright was sought. He was appointed Chairman and very quickly secured the use of Rocheway School which had been closed due to its proximity to Southend airport.

This of course gave the club changing rooms and rugby pitches immediately. To get players an advert was placed in the Southend Pictorial and no less than 45 replies were received. Old Westcliffians had seen the advert and invited the new committee to a beer and cheese evening at the Gables. From this Rochford secured a fixture and an introduction to the London fixture Exchange. The first fixture was in fact against Billericay and not Old Westcliffians however. The name of the club had been suggested by John Roden after he saw a poster by Rochford Hundred Licensed Victuallers Association in the White Hart. Rochford Hundred was after all the name of the district.

The club also managed to secure a clubhouse in the car park of the Horse & Groom thanks to Mrs Innell, the licensee, and quickly set to work to make it ready for use for season 1962/63, although it was in use from March 1962.

It is worth noting that the first games were played in March and April 1962 and that Bob Light was captain.

In Season 1962/63 the club fielded 2 senior teams and a Colts team which is remarkable for a first full season. It is recorded that over 70 fixtures were arranged for this first season. Tony Davies was the 1st XV captain in this season. The Colts team was made up of a number of players from Rayleigh Secondary Modern School (now Fitzwimarc) and Sweyne School. Indeed David Allen (then a 16 year old) remembers being at one of the formation meetings at the Bull when he was still at school.

The first few years were not particularly successful but things changed when the likes of Mike Treasure came onto the scene. He was captain in 1965/66 and 1966/67 and was our first full Essex cap. His team went unbeaten for 18 months and were one of the highest scoring teams in the country. He was fortunate in having players of the calibre of Peter Coster, who was a great centre. Regrettably, Peter died recently in America, where he had been living for many years.

With playing success there came a desire to move to our own ground and in 1968 Jim Sowter, who used to write a column in the local press, printed a story that the club wished to purchase a field in the Rochford district big enough for pitches and a clubhouse. He received a letter from the lady secretary of Southend Manor Football club stating that they had an option on 10 acres of land in Magnolia Road. They were unable to raise the money to proceed and suggested that we might like to take over the option. Jim arranged a meeting between her and Ernie Mills and Ernie liked what he saw and took up the option. The land cost £3,200 and the purchase was completed in March 1969. The Rugby Football Union provided a loan of £2,100 towards the purchase.

The lengthy process of obtaining finance, building the clubhouse and preparing the pitches could now be started. In September 1970 a grant of £5,592 was offered by the Ministry of Housing and local Government and this was supplemented by grants and loans from the Essex Playing Fields Association and the National Playing Fields Association. In July, 1971 the Club gave the go-ahead to Muggleton's to start building based on an estimated cost of £11,320 of which we had raised only £8,000. The clubhouse was officially opened by Dickie Jeeps in April, 1974 when the 1st XV played against a strong Eastern Counties XV.

In 1971/72, when Malcolm Fleming was captain, there were two memorable games both in the Essex Senior Cup. The first game was against Old Bancroftians when Dickie Kent, who played scrum half for England, and Howard Waller, who was a renowned sevens player for Richmond, were in the Bancroft side. Rochford won 21-6 in a tremendous match and demonstrated that they had joined the top echelons of Essex rugby. The next round was against Barking Park Modern Old Boys at Rocheway and a pulsating match was finally won by Barking 14-12. To those who were present these were two of the finest matches played by Rochford.

The pitches in those early days at Magnolia Road were frankly dreadful but over the years there has been considerable work on them and they are now adequate for the task, if not perfect. In the late 1980's and early 1990's the clubhouse was expanded substantially with new changing rooms a gym and a new clubroom and kitchen. Floodlights were also installed.

Our youth section has gone from strength to strength and provides players for our 1st XV and other club teams. In fact our current 1st XV is almost entirely made up of former youth players. We have a ladies and girls section which is unusual among Essex Clubs. The Club is currently playing in London 2 (North East) and we can look back on 50 years of activity with considerable satisfaction.

# Rochford Hundred Rugby Club



Unit 3 Stadium Business Court, Millennium Way,  
Pride Park, Derby DE24 8HP

Telephone +44(0)1332 34 74 74

Fax +44(0)1332 34 47 88

## LEAGUE LUNCHES

8th October 2016 v **Holt**

29th October 2016 v **Romford & Gidea Park**

19th November 2016 v **Old Cooperians**

10th December 2016 v **Epping Upper Clapton**

17th December 2016 v **South Woodham Ferrers**

14th January 2017 v **Cantabrigians**

11th February 2017 v **Woodford**

4th March 2017 v **Campion**

25th March 2017 v **Norwich**

All members and friends are invited to attend any of the sponsored lunches at a cost of **£20.00** per head (£18 for members). Book your seats through **John Drinkwater** on **01702 204237** or directly at the club. If you wish to be a match sponsor please email

**[commercial@rochfordrugby.com](mailto:commercial@rochfordrugby.com)**



# We'll see you stay on top of your game

Visit Vision Express  
Rayleigh for:

- Sports eyewear including Oakley
- Specialist sports lenses
- Free contact lens trial when you present this advert in-store\*



\*Terms and conditions apply, see in-store for details.  
Brands may vary between stores and are subject to availability.

Book your eye test today  
High Street,  
Rayleigh.  
01268 771148

vision **express**  
We'll see you right



# TRY!

The **Wi-Fi**  
Guy

**600% more facebook likes  
and check-ins for your business.**

**Increase your reach, drive  
customers to your door.**

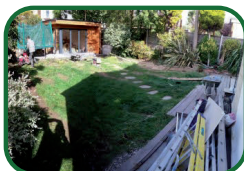
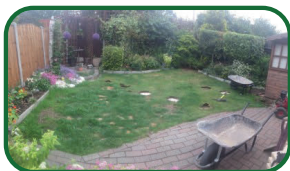
**web - [www.wifiguy.co.uk](http://www.wifiguy.co.uk)**


**email - [hello@wifiguy.co.uk](mailto:hello@wifiguy.co.uk)**

# GRASSED UP .co.uk

“The Ultimate **Artificial Grass**”

- ✓ No Mowing
- ✓ No Watering
- ✓ No Mud
- ✓ Lowest Price
- ✓ Highest Quality



 : 07401 447905 / 01702 543781

 : [sales@grassedup.co.uk](mailto:sales@grassedup.co.uk)



**Proud Sponsors of Rochford Hundred Rugby Club**

# Rochford Hundred Squad 2016/17

## STAFF & COACHES



**Michael Guess**  
Director of Rugby



**Aaron Dunn**  
Strength & Conditioning



**John Branch**  
Physiotherapist



**Graham Pratt**  
Manager



**Adam Faherty**  
Commercial Manager



**Kevin Anderson**  
Touch Judge

## FORWARDS *(sponsors under each name)*



**Tom Corbet - Vice Capt.**  
ICAP



**Luke Irvine**  
The Rams



**Michael Mark**  
Kelly Communication



**Liam Bass**  
Stanmore



**Nik Grier**  
Spires Painting Contractors



**Matthew Bevan**  
Kelan Solutions



**Bradley Hughes**  
Connaughts Site Investigations Ltd



**Scott Chivers**  
ICAP



**Ricky Wiseman**  
Colin Wiseman



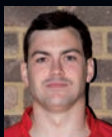
**Josh Illingworth**  
Comex 2000



**Sam Tape**  
No Sponsor



**Scott Wheeler**  
Grassed Up



**Richard Mott**  
No Sponsor



**Matt Basham**  
Larchwood Care



**Robbie Duboux**  
C&G Gas and Heating Limited



**Max Bacon**  
Kelan Solutions



**Scott Turner**  
Comex 2000



**Darren Spencer**  
No Sponsor



**Alex Harbrow**  
C&D Carpentry and Building



**Jake Knowles**  
Stanmore



**Andrew Bevan**  
No Sponsor



**Louis Warner**  
Richard Warner



**Scott Horsburgh**  
Grassed Up



**Greg Whight**  
Graham Pratt



# Chairman's Message

Good afternoon Ladies and Gentlemen,  
welcome to Rochford Hundred Rugby Club,  
I hope you enjoy your day with us.

Today we welcome Holt to Magnolia Road for what I hope will be another great game between the two teams.

The 1st XV squad have been training really hard since the beginning of preseason back in July but a number of injuries continues to dog our selection every week and we are certainly making full use of our squad.

I would also like to pass on our condolences to the Holt rugby family and John Ross family. John was a larger than life character in the rugby world who sadly passed during the closed season.

This week we have mascots from the under 12's and ball boys from the under 15's. Thank you to all the parents, coaches, managers and any other helpers from these teams for bringing the children along to support the first team.

We are hosting a club race night on the 14th October and our fireworks night is Friday 4th November, all friends and family of all members are welcome. Please see our website [www.rochfordrugby.com](http://www.rochfordrugby.com) for more information on these events and any future ones we are hosting.

If anyone is interested in sponsoring or advertising at the club please talk to Adam Faherty – [commercial@rochfordrugby.com](mailto:commercial@rochfordrugby.com)

Please remember the lads on the pitch are playing for our enjoyment so lots of cheering and no jeering, as without them to watch you would be shopping.

Enjoy your day.

*Peter Van Den Broeck*

Rochford Hundred Rugby Club - Chairman



# HOME TEAM SQUAD

## Rochford Hundred RFC

*Director of Rugby - Michael Guess Physiotherapist - John Branch*

<i>No.</i>	<i>Name</i>	<i>Sponsor</i>
<b>1</b>	Michael Mark	Kelly Communication
<b>2</b>	Michael Guess	
<b>3</b>	Ricky Wiseman	Colin Wiseman
<b>4</b>	Alex Harbrow	C&D Carpentry and Building
<b>5</b>	Scott Horsburgh	Grassed Up
<b>6</b>	Scott Turner	Comex 2000
<b>7</b>	Nik Grier	Spires Painting Contractors
<b>8</b>	Scott Goodliffe	
<b>9</b>	Jack Doherty	Connaughts Site Investigations Ltd
<b>10</b>	Matthew Stewart ( <i>Captain</i> )	Seabro
<b>11</b>	Sam Edwards	Associated Foreign Exchange
<b>12</b>	Dan Dieu-De-Bellefontaine	A-Class Asbestos
<b>13</b>	Robert Prior	Kelly Communication
<b>14</b>	Tom Pickering	Connaughts Site Investigations Ltd
<b>15</b>	Mark Billings	Alan Peacock
	<i>Substitutes</i>	
<b>16</b>	Bradley Hughes	Connaughts Site Investigations Ltd
<b>17</b>	Michael Stemp	Graham Pratt
<b>18</b>	Jonathan Fitzpatrick	

*Ball Boys*



## Under 15's

# AWAY TEAM SQUAD

## Holt Rugby Club

Coaches - Ed Steed and David Bailey Physiotherapist - Andy Siddall

No. Name

- 1 Aaron Cole
  - 2 Jake Powell
  - 3 Phil Davies
  - 4 Jim Seaman
  - 5 Rob Gray
  - 6 Joe Harrison
  - 7 Henry Harrison
  - 8 Ashley Woods
  - 9 Bruce van Poortvliet
  - 10 Ben Harvey
  - 11 Murray Tindal
  - 12 Graham Ilsley
  - 13 Hal Riley
  - 14 Jim Riley (*Captain*)
  - 15 Geoff Flather
- Substitutes*
- 16 Sandy Shanklin
  - 17 Jack Whitesides
  - 18 Tom Harrison

Referee

Adam Hughes (*Midlands Society*)

### Rochford Hundred Upcoming Events

#### Pre Match Lunch vs Romford & Gidea Park

Saturday 29th October - £20 per person  
(£18 members) book your place via John Drinkwater  
on 01702 204237.

#### Race Night

Friday 14th November - 7pm start at the club.

#### Pre Match Lunch vs Old Cooperians

Saturday 19th November - £20 per person  
(£18 members) book your place via John Drinkwater  
on 01702 204237.

### London 2 North East League

#	Team	Pl	HW	HD	HL	AW	AD	AL	W	D	L	F	A	Diff	Pts	Adj
1.	Old Cooperians	4	2	0	0	2	0	0	4	0	0	134	37	97	18	2
2.	Dis	4	1	0	0	2	0	1	3	0	1	120	71	49	15	3
3.	Norwich	4	2	0	0	1	0	1	3	0	1	106	62	44	14	2
4.	Romford & Gidea Park	4	2	0	0	0	0	2	2	0	2	76	98	-22	10	2
5.	South Woodham Ferrers	2	1	0	0	1	0	0	2	0	0	65	42	23	9	1
6.	Woodford	3	2	0	0	0	0	1	2	0	1	46	68	-22	9	1
7.	Ipswich	3	0	0	1	1	0	1	1	0	2	81	86	-5	6	2
8.	Cantabrigian	4	1	0	2	0	0	1	1	0	3	81	97	-16	6	2
9.	Holt	3	0	0	1	1	0	1	1	0	2	37	77	-40	6	2
10.	Epping Upper Clapton	2	1	0	0	0	0	1	1	0	1	43	45	-2	5	1
11.	Rochford Hundred	4	0	0	2	0	0	2	0	0	4	90	144	-54	2	2
12.	Campion	3	0	0	2	0	0	1	0	0	3	50	102	-52	-5	-5

For up to the minute fixtures please visit our website:

**WWW.ROCHFORDRUGBY.COM**



**INSTALCOM**



O'CONNOR UTILITIES LTD  
incorporating  
INSTALCOM LTD

**TELECOMS  
ELECTRIC  
GAS  
WATER  
DIRECTIONAL DRILLING  
RAILWAYS  
MULTI UTILITY**

**Instalcom Limited**

Instalcom House, Borehamwood Industrial Park  
Rowley Lane, Borehamwood, Herts WD6 5PZ  
Tel: 0208 731 4600 Fax: 0202 731 4601  
[www.instalcom.co.uk](http://www.instalcom.co.uk) [info@instalcom.co.uk](mailto:info@instalcom.co.uk)

**MANCHESTER OFFICE**

Unit 10, Sanfold Lane, Levenshulme, Manchester M19 3BJ  
Tel: 0161 248 9922 Fax: 0161 248 9933

**O'CONNOR UTILITIES LTD**

# Rochford Hundred Squad 2016/17

## BACKS *(sponsors under each name)*



**Matthew Stewart - Capt.**  
Seabro



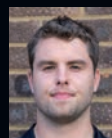
**Steven Jay**  
Peter Jay



**Harry Chipper**  
R D Carpentry Limited



**Jack Doherty**  
Connaughts Site Investigations Ltd



**Robert Prior**  
Kelly Communication



**Louie Marshall**  
John Drinkwater



**Jon Baker**  
Baker Events



**Matthew White**  
Baker Events



**Andy Baker**  
No Sponsor



**Marcus Spremulli**  
Mike Drinkwater



**Michael Stemp**  
Graham Pratt



**Simon Ashton**  
Biochem Pest Control



**Dan Dieu-De-Bellefontaine**  
A-Class Asbestos



**Tom Pickering**  
Connaughts Site Investigations Ltd



**Lee Wiseman**  
Colin Wiseman



**Mark Billings**  
Alan Peacock



**Samuel Edwards**  
Associated Foreign Exchange



**Jonathon Fitzpatrick**  
No Sponsor

**Free  
Quote**

Just telephone or email  
your requirements

# pl@n

GRAPHIC DESIGN

**20%  
OFF**

Any design work for  
first time customers

## For All Your Graphic Design Needs

Telephone: **01702 469035**

Email: [plangd@live.com](mailto:plangd@live.com) Web: [www.plangraphicdesign.co.uk](http://www.plangraphicdesign.co.uk)

27 Eros Avenue, Southend-on-Sea, Essex SS2 4GN

# Rochford Hundred Rugby Club

Networking • Structured Cabling • Access Control Specialists  
**KELAN** Solutions Ltd  
[www.kelansolutions.co.uk](http://www.kelansolutions.co.uk)

Telephone: 07973 694679 Email: [kelan@f2s.com](mailto:kelan@f2s.com)

---

## Rochford Hundred Supporters Group

---

If Club Members wish to be part  
of the official group that attends  
the lunches at away matches  
please contact John Drinkwater

**01702 204237**

# Club Social Events 2016-2017

This season we are arranging more social events for the whole club, we welcome all member's and there guest's, from all age groups, to come along and support the club together.

## INITIAL EVENTS

24th September 2016 **Live Music Session**

14th October 2016 **Race Night**

4th November 2016 **Fireworks Night**

17th December 2016

**Club Xmas Lunch - Live Music Session**

31st December 2016 **New Years Eve Party**

27th May 2017 **May Ball**

Add these dates to your diary, more information will follow. For more information please email

**[events@rochfordrugby.com](mailto:events@rochfordrugby.com)**



**Andrew Murphy**  
CHARTERED ACCOUNTANTS

***For all of your accountancy  
& taxation needs***

***Free initial consultation***

*Professional, efficient,  
approachable and affordable -  
we have the right balance*

***Call 01702 542424***

*- 'out of hours' meetings always available*

Andrew Murphy **FCA**  
Sovereign House, 82 West Street,  
Rochford, Essex SS4 1AS  
(opposite Rochford Railway Station)

**Email:** [enquiries@apmca.co.uk](mailto:enquiries@apmca.co.uk)

**Website:** [www.apmca.co.uk](http://www.apmca.co.uk)

**Registered Auditors**





# Rochford Hundred Rugby Club

**zoo-sport**

Teamwear available at

**[www.fentonrugby.com](http://www.fentonrugby.com)**

6 High Street, Brentwood, Essex CM14 4AB

**01277 219438**

**THE CLUB SHOP  
WILL BE MOVING  
ONLINE SOON**

**MORE DETAILS TO FOLLOW**

# Acknowledgments



**COMEX2000**  
Network & Communication

Unit 3 Stadium Business Court, Millennium Way,  
Pride Park, Derby DE24 8HP

Telephone +44(0)1332 34 74 74

Fax +44(0)1332 34 47 88

Networking • Structured Cabling • Access Control Specialists  
**KELAN Solutions Ltd**  
[www.kelansolutions.co.uk](http://www.kelansolutions.co.uk)

Telephone: 07973 694679 Email: [kelan@f2s.com](mailto:kelan@f2s.com)

Rochford Hundred Rugby Football Club members wish to thank all of our friends who have supported us through the years and this coming season.

We are grateful for the many donations made by various friends and business associates.





**Stanmore Contractors Limited** is one of the UK's leading interior and exterior fit-out subcontractors. With a £119M annual turnover 2015-16, Stanmore has worked with the majority of the largest Developers and Main Contractors in the South East of England.

Stanmore is therefore able to combine 50 years' experience in construction methods with acquired expertise to become one of the most recognised brand names in today's market.

As a result, Stanmore is not only able to offer a range of drywall partitions, wall lining, screed and ceilings but also lightweight steel frames, insulated external render systems, through colour render, cladding systems, windows, doors, curtain walling structural steelwork, architectural metalwork and coping fascias.

Experience has seen Stanmore work on a diversity of construction projects, from residential houses and flats to complex schools, hospitals, community buildings, industrial warehousing and high-rise commercial / residential units.



**STANMORE**



**Stanmore Contractors Limited** Stanmore House, Gyproc Business Park, Church Manorway, Erith, Kent, DA8 1DE

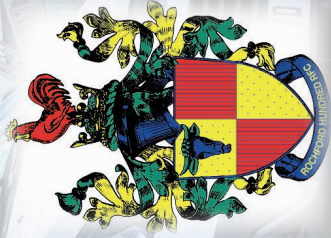
T 01322 446446 F 01322 448448 E mail@stanmoreltd.co.uk www.stanmoreltd.co.uk Registered office as above Registered in England no. 02754550 VAT no. 625560641



A Nationwide Telecommunications and Utility Service Provider

are delighted to support

Rochford Hundred Rugby Club 2016/2017



Kelly Group

Kelly House, Fourth Way, Wembley, Middlesex HA9 0LH

Tel: + 44 20 8424 0909 Fax: +44 203 770 4212

[www.kelly.co.uk](http://www.kelly.co.uk)