



London
Division 1
NORTH EAST



Rochford Hundred Rugby Football Club

Versus

Amersham & Chiltern RFC



Saturday 1st September 2018 Kick Off 3.00pm



SARACENS
PARTNER CLUB

Referee - Benjie Ainsworth-Taylor (London Society)

Ball Boys - Under 13's

WWW.ROCHFORDRUGBY.COM • Main 1st XV Sponsors



Kelly Group



Seetec
SKILLS

To sponsor the club email:

COMMERCIAL@ROCHFORDRUGBY.COM

To hire the club email:

FUNCTIONS@ROCHFORDRUGBY.COM

To play for the club email:

COACHING@ROCHFORDRUGBY.COM

For up to date information join our Website at:

WWW.ROCHFORDRUGBY.COM

THE RUGBY PARK - MAGNOLIA ROAD - HAWKWELL - ESSEX - SS4 3AD



/RochfordRugby



@RochfordRugby



rochfordrugby

TELEPHONE

01702 544021

Training nights

Seniors - Tuesdays and Thursdays 7pm Mini (U12-U6) - Saturdays 10am

Youth (U16-U13) - Wednesdays 7pm Ladies and Girls - Wednesdays 7pm

Academy - Tuesdays and Wednesdays 6.30pm

Little Scrummers (Age 2-6) - Saturdays 10am

Rochford Hundred Rugby Club - Telephone 01702 544021 - Website www.rochfordrugby.com

Rochford Hundred Rugby Club

Welcome to Rochford Hundred Rugby Club

Our Club History

Rochford Hundred was the brainchild of John Roden and Ernie Mills and was first discussed in November 1961 when the two met at the White Hart in Hawkwell. John had played at Ilford Wanderers and Ernie was an Old Tottonian so both were keen to play on their own doorstep. The inaugural meeting was held on the 4th January 1962 at the Bull Inn and was attended by a small group. The club now needed a ground and the assistance of County Councilor, later Alderman, Bill Wright was sought. He was appointed Chairman and very quickly secured the use of Rocheway School which had been closed due to its proximity to Southend airport.

This of course gave the club changing rooms and rugby pitches immediately. To get players an advert was placed in the Southend Pictorial and no less than 45 replies were received. Old Westcliffians had seen the advert and invited the new committee to a beer and cheese evening at the Gables. From this Rochford secured a fixture and an introduction to the London fixture Exchange. The first fixture was in fact against Billericay and not Old Westcliffians however. The name of the club had been suggested by John Roden after he saw a poster by Rochford Hundred Licensed Victuallers Association in the White Hart. Rochford Hundred was after all the name of the district.

The club also managed to secure a clubhouse in the car park of the Horse & Groom thanks to Mrs Innell, the licensee, and quickly set to work to make it ready for use for season 1962/63, although it was in use from March 1962.

It is worth noting that the first games were played in March and April 1962 and that Bob Light was captain.

In Season 1962/63 the club fielded 2 senior teams and a Colts team which is remarkable for a first full season. It is recorded that over 70 fixtures were arranged for this first season. Tony Davies was the 1st XV captain in this season. The Colts team was made up of a number of players from Rayleigh Secondary Modern School (now Fitzwimarc) and Sweyne School. Indeed David Allen (then a 16 year old) remembers being at one of the formation meetings at the Bull when he was still at school.

The first few years were not particularly successful but things changed when the likes of Mike Treasure came onto the scene. He was captain in 1965/66 and 1966/67 and was our first full Essex cap. His team went unbeaten for 18 months and were one of the highest scoring teams in the country. He was fortunate in having players of the calibre of Peter Coster, who was a great centre. Regrettably, Peter died recently in America, where he had been living for many years.

With playing success there came a desire to move to our own ground and in 1968 Jim Sowter, who used to write a column in the local press, printed a story that the club wished to purchase a field in the Rochford district big enough for pitches and a clubhouse. He received a letter from the lady secretary of Southend Manor Football club stating that they had an option on 10 acres of land in Magnolia Road. They were unable to raise the money to proceed and suggested that we might like to take over the option. Jim arranged a meeting between her and Ernie Mills and Ernie liked what he saw and took up the option. The land cost £3,200 and the purchase was completed in March 1969. The Rugby Football Union provided a loan of £2,100 towards the purchase.

The lengthy process of obtaining finance, building the clubhouse and preparing the pitches could now be started. In September 1970 a grant of £5,592 was offered by the Ministry of Housing and local Government and this was supplemented by grants and loans from the Essex Playing Fields Association and the National Playing Fields Association. In July, 1971 the Club gave the go-ahead to Muggleton's to start building based on an estimated cost of £11,320 of which we had raised only £8,000. The clubhouse was officially opened by Dickie Jeeps in April, 1974 when the 1st XV played against a strong Eastern Counties XV.

In 1971/72, when Malcolm Fleming was captain, there were two memorable games both in the Essex Senior Cup. The first game was against Old Bancroftians when Dickie Kent, who played scrum half for England, and Howard Waller, who was a renowned sevens player for Richmond, were in the Bancroft side. Rochford won 21-6 in a tremendous match and demonstrated that they had joined the top echelons of Essex rugby. The next round was against Barking Park Modern Old Boys at Rocheway and a pulsating match was finally won by Barking 14-12. To those who were present these were two of the finest matches played by Rochford.

The pitches in those early days at Magnolia Road were frankly dreadful but over the years there has been considerable work on them and they are now adequate for the task, if not perfect. In the late 1980's and early 1990's the clubhouse was expanded substantially with new changing rooms a gym and a new clubroom and kitchen. Floodlights were also installed.

Our youth section has gone from strength to strength and provides players for our 1st XV and other club teams. In fact our current 1st XV is almost entirely made up of former youth players. We have a ladies and girls section which is unusual among Essex Clubs. The Club is currently playing in London 1 (North East) and we can look back on 50 years of activity with considerable satisfaction.

Rochford Hundred Rugby Club - Telephone 01702 544021 - Website www.rochfordrugby.com

Rochford Hundred Rugby Club



COMEX2000
Network & Communication

Unit 3 Stadium Business Court, Millennium Way,
Pride Park, Derby DE24 8HP

Telephone **+44(0)1332 34 74 74**
Fax **+44(0)1332 34 47 88**

LEAGUE LUNCHES

1st September 2018 v **AMERSHAM & CHILTERN**

15th September 2018 v **HAC**

29th September 2018 v **DISS**

20th October 2018 v **RUISLIP**

3rd November 2018 v **NORTH WALSHAM**

24th November 2018 v **ETON MANOR**

1st December 2018 v **OLD PRIORIANS**

15th December 2018 v **SOUTHEND**

12th January 2019 v **FULLERIANIS**

26th January 2019 v **SUDBURY**

16th February 2019 v **COLCHESTER**

9th March 2019 v **LUTON**

6th April 2019 v **OLD HABERDASHERS**

All members and friends are invited to attend any of the sponsored lunches at a cost of **£20.00** per head. Book your seats through **John Drinkwater** on **01702 204237**, **07940 217899** or directly at the club. If you wish to be a match sponsor please email:

commercial@rochfordrugby.com



07970 254222
01708 453922
info@roofaid.co.uk



Rochford Hundred Rugby Club - Telephone 01702 544021 - Website www.rochfordrugby.com



Help your vision last a lifetime.

Book your Eye Test with an in-store expert.

Find us on High Street, Rayleigh.

Call 01268 771148 or book online at visionexpress.com

vision ~~ex~~press

VISION.TAKEN SERIOUSLY.

Ask in-store for details.

PLAYER PROFILE

HARRY HUDSON

NAME – Harry Hudson

D.O.B – 23/10/92

POSITION – Any when I'm
at the bottom

NICKNAME – The Hud

WEIGHT – 102kg

HEIGHT – 6'2 and 7/8's

FAVOURITE FOOD – Stew

FAVOURITE DRINK – GT

BEST RUGBY MEMORY – Not being tall enough for the 2 row

WORST RUGBY MEMORY – Starting as a 2 row

**IF YOU HAD TO CHOOSE 3 PEOPLE TO GET STUCK
IN A LIFT WITH. WHO ? WHY ?**

- 1 – Michael Scott, The Office
- 2 – Frank the tank, Old school
- 3 – Alan, The Hangover

FUNNIEST IN THE TEAM – I laugh at Luke a lot

WORST DRESSED – Beero

LONGEST IN THE SHOWER – I drive Fombo home and he is
always the last one out, kid is long



Rugby Coaching Report

Welcome to the Director of Rugby report.

Welcome to the first game of what we hope will be a successful and exciting season. We have a tough start against a well-respected team and we welcome Amersham and their supporters.

April seems a long time ago now and the celebrations following a unblemished season in London Two, we must look back on it fondly and those memories but been honest that is just a very small part of what we hope to achieve in the future. We mustn't be satisfied with that and must look to move forward once again this year across the whole club.

We welcome Harry Hudson as captain who joins us from Roslyn Park. Harry is the most driven young player I have worked with and will set a standard others must adhere too. Matt Stewart did a fantastic job last season and we look forward hopefully to welcoming him back to the playing ranks soon.

Mike Guess widens his role with the academy alongside Mark Williams and new strength and conditioning coach Luke Brewster. Both Mark and Luke are working with the Academy and 1st team as well as Guessy and shows our intent to develop the whole club not just the 1st team. With that in mind Rochford stalwart Dick Gibbons takes over a very important role as second team coach working very closely with myself and the other staff. Numbers here have been fantastic and we look forward to a much improved second team season.

The club must move forward with the pace of the playing staff and is no safer hands than Peter and Wayne on this.

Enjoy the game and will hopefully see you all next week at Southend also which will see the return of that local derby. We value what is a great support, and it's vital we show everyone the very best of our club today and the big support we take over to Warner's bridge next week. Enjoy the season let's make it one to remember.

Chris Green

Rochford Hundred Rugby Club
- Director of Rugby





TRY!

The Wi-Fi Guy

**600% more facebook likes
and check-ins for your business.**

**Increase your reach, drive
customers to your door.**

web - www.wifiguy.co.uk

email - hello@wifiguy.co.uk




GRASSED UP .co.uk

“The Ultimate **Artificial** Grass”

- ✔ No Mowing
- ✔ No Watering
- ✔ No Mud
- ✔ Lowest Price
- ✔ Highest Quality



 : 07401 447905 / 01702 543781

 : sales@grassedup.co.uk



Proud Sponsors of Rochford Hundred Rugby Club

Rochford Hundred Squad 2018/19

STAFF & COACHES



Chris Green
Director of Rugby



Michael Guess
Forwards Coach



Chris Garstin
Backs Coach



James Kellard
Defence Coach



Danny Cleare
Attack Coach



Adam Faherty
Commercial Manager



Graham Pratt
Manager



John Branch
Physiotherapist



Mark Williams
Head of Strength & Conditioning



Luke Brewster
Strength & Conditioning



David Dixon
Nutritionist



Dick Gibbons
Harts Head Coach



Kevin Anderson
Touch Judge



TBA
Cameraman

FORWARDS *(sponsors under each name)*



Harry Hudson - Capt.
The Backbenchers



Craig Strachan
Roof Aid



Lewis Brunger
Grassed Up



Josh Ridgeway
Tower Demolition



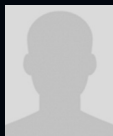
Liam Bass
ARC (UK) Systems



Adam Ferrier
Fit Performance



Tom Corbet
Maguire Roofing Ltd



Daniel House
Andrew House



Jody Allen
Roof Aid



Kole Awosika
No Sponsor



Joe Moran
No Sponsor



Samuel Fombo
John Drinkwater



Daniel Sowler
Dancework Studio



Luke Court-Rind
Stanmore



Calum Brackett
Kidz Camp Essex



Alan Barker
Ian Brown



Jamie Douglas
Kelly Communication



Joseph Hurley
SEETEC



Stuart Whatling
MadiganGill



Mitchell Webb
Middleham Park Racing



James Kellard
A&R Elite Scaffolding

Chairman's Message

Good afternoon Ladies and Gentlemen,
welcome to Rochford Hundred Rugby Club,
I hope you enjoy your day with us.

Well today is my third season as Chairman, and I thought it would be easy being the Chairman. Well far from it, every day has a challenge. Today is the start of a new season, one of which all the squad and management are looking forward too. The lads have hardly had time off during the summer, training hard and travelling to find tough opposition to be ready for the tough challenge ahead.

Talking of tough we start today with Amersham and Chiltern which I see as a great challenge to kick us off. A warm welcome to Magnolia Road to everyone that has made the trip here today.

We also host the annual Royal Anglian Fund raiser with over 100 of the regiment here today.

All money collected from today's food sales, raffle is going towards the benevolent fund for all those fallen and in need. So please give generously to the raffle. There is also the Corp of drums who will play the Last post and demonstrate some great drum and flute music.

The Backbenchers are our lunch sponsors and I would like to thank them for their support, season after season. I would also like to thank both Matt Stewart and Tom Corbet for their leadership on the pitch last season. We see a new captain of the club this season in Harry Hudson, who I am sure you will all get to meet and talk to throughout the season.

Other things of note that have happened during the summer:

A. Our changing rooms have had a lick of paint thanks to the following John Archer, Kevin Anderson, Colin Wiseman, Simon Watkins, Mike O'Connor, Gary Barber, Danny Ryan and Matt Bridger with the Tesco Crew. I am not sure who had more paint on, us or the walls.

B. The club gym has had a long overdue revamp with new equipment and is now a great warm up and recovery facility for our players. Thanks to Michael Guess and Craig Strachan.

C. The First Aid room was also completed with thanks to our sponsor Seetec for funding this project for us and to Ray Stephenson and Pete Wallace for you work on it.

D. The Friday & Monday crew have also been working hard completing drainage, erecting gates and all the normal off-season work that goes into the clubhouse.

E. We have also seen planning permission for the flood lights progress, we now need to find the money through fundraising, sponsorship, grants etc. This will allow us to have more much needed lighting with so many now training.

F. We have also seen a new club kit supplier come on board, which unfortunately had to be done late in the summer but will ensure we have value for money in the long run, so again thanks to all for your patience.

Lastly the club relies on Members paying membership every year so if you have not done so yet please ensure you make your donation or sign up today for direct debit forms behind the bar. Being a member has benefits reduced prices on alcohol. We are also always looking for Sponsors looking to advertise their business through our web site and pitch side hoardings etc. Please email commercial@rochfordrugby.com for all sponsorship opportunities.

Always remember that our beautiful game is built on **RESPECT** so jeering or bad language is not acceptable at any time.

Peter Van Den Broeck

Rochford Hundred Rugby Club - Chairman



HOME TEAM SQUAD

ROCHFORD HUNDRED

RUGBY FOOTBALL CLUB

No.	Name	Sponsor
1	Craig Strachan	Roof Aid
2	Lewis Brunger	Grassed Up
3	Michael Guess	No Sponsor
4	Luke Court-Rind	No Sponsor
5	Samuel Fombo	John Drinkwater
6	Stuart Whatling	MadiganGill
7	Harry Hudson (<i>Captain</i>)	The Backbenchers
8	James Kellard	A&R Elite Scaffolding
9	Ricki Gould	Matt Norris
10	Cameron Greenhall	Mike Drinkwater
11	Norbertas Radzevicius	Cripps & Son Ltd
12	Sonny Gay (<i>Vice Captain</i>)	Snappy Photo Booths
13	Mark Ikhifa	Stanmore
14	Danny Cleare	Pest Cleare
15	Mark Billings	Alan Peacock
<i>Substitutes</i>		
16	Liam Bass	ARC (UK) Systems
17	Jamie Douglas	Kelly Communication
18	Steven Jay	Peter Jay

Today's Lunch Sponsors



THE
BACKBENCHERS

AWAY TEAM SQUAD

AMERSHAM & CHILTERN

RUGBY FOOTBALL CLUB

No. Name

- 1 Not Supplied
- 2 Not Supplied
- 3 Not Supplied
- 4 Not Supplied
- 5 Not Supplied
- 6 Not Supplied
- 7 Not Supplied
- 8 Not Supplied
- 9 Not Supplied
- 10 Not Supplied
- 11 Not Supplied
- 12 Not Supplied
- 13 Not Supplied
- 14 Not Supplied
- 15 Not Supplied

Substitutes

- 16 Not Supplied
- 17 Not Supplied
- 18 Not Supplied

Referee

Benjie Ainsworth-Taylor (*London Society*)

Rochford Hundred Upcoming Events

ESSEX CUP SEMI FINAL

**Rochford Hundred
v Westcliff**

Saturday
13th October
at Magnolia Road

Kick Off TBC

To sponsor the club email:

commercial@rochfordrugby.com

Seetec

SKILLS



- ✓ Apprenticeships
- ✓ Traineeships
- ✓ Skills development

Rochford Hundred Squad 2018/19

FORWARDS *(sponsors under each name)*



Chris Shields
A Sporting View

BACKS *(sponsors under each name)*



Sonny Gay - Vice Capt.
Snappy Photo Booths



Steven Jay
Peter Jay



Ricki Gould
Matt Norris



Jack Doherty
Connaughts Site Investigations



Jake Harman
Comex 2000



Tom Ashton
Grassed Up



Thomas Cubitt
No Sponsor



Jonathon Fitzpatrick
No Sponsor



Cameron Greenhall
Mike Drinkwater



Louie Marshall
Dantel Construction



Will Ferrier
MadiganGill



Mitchell Bennett
Comex 2000



Norbertas Radzevicius
Cripps & Son Ltd



David Semu
No Sponsor



Alfie Justice
Panel Supplies Ltd



Matt Stewart
No Sponsor



Ben Johnson
Kelly Communication



Danny Cleare
Pest Cleare



Mark Ikhifa
Stanmore



Tom Pickering
Connaughts Site Investigations



Mark Billings
Alan Peacock



Iain Meads
SEETEC



Sam Edwards
Associated Foreign Exchange

Rochford Hundred Rugby Club

COURTS OF RAYLEIGH



FLOWERS OF DISTINCTION

*Bouquets – Weddings – Funerals – Corporate
Plants – Chocolates – Balloons – Gifts*

54 EASTWOOD ROAD, RAYLEIGH, SS6 7PJ
TELEPHONE: 01268 777983



COURTSOFRAYLEIGH.CO.UK



R & A Mechanical Services

Tel: **01702 524465**

22 Belgrave Road,
Leigh-on-Sea,
Essex SS9 5HE

Rochford Hundred Rugby Club – Telephone 01702 544021 – Website www.rochfordrugby.com

PLAYER PROFILE

CAMERON GREENHALL

NAME – Cameron Greenhall

D.O.B – 28/05/98

POSITION – Fly Half

NICKNAME – Cam

WEIGHT – 84kg

HEIGHT – 192cm

FAVOURITE FOOD – Nandos

FAVOURITE DRINK – Water or WKD

BEST RUGBY MEMORY – Finishing 80 minutes without getting hit late

WORST RUGBY MEMORY – Getting hit late

IF YOU HAD TO CHOOSE 3 PEOPLE TO GET STUCK IN A LIFT WITH. WHO ? WHY ?

- 1 – Jonny Wilkinson - My hero
- 2 – Margot Robbie - My Celebrity crush
- 3 – Bear Grylls - To get us out of there!

FUNNIEST IN THE TEAM – Sam Fombo

WORST DRESSED – William Ferrier or Sonny Gay

LONGEST IN THE SHOWER – Chris Green



**When YOU need a reliable,
safe pair of hands...**



MORTGAGE ADVICE

YOU CAN DEPEND ON

**MORTGAGES FOR FIRST TIME BUYERS,
PURCHASES, RESIDENTIAL REMORTGAGES,
BUY TO LET BORROWING**

Matt Barber Zing Mortgages
07967 105360 matt.barber@zing-mortgages.co.uk

Rochford Hundred Rugby Club



CONNAUGHTS SITE INVESTIGATION LIMITED

35 GREEN LANE, LEIGH-ON-SEA, ESSEX SS9 5AP
TELEPHONE: 01702 528098
E-MAIL: CONNAUGHTS@AOL.COM

Rochford Hundred Rugby Club - Telephone 01702 544021 - Website www.rochfordrugby.com



MadiganGill

At **MadiganGill** we specialise in the supply of high quality labour and trades, site management staff, construction logistics and subcontract packages to the construction industry.

120 Moorgate
London
EC2M 6UR

0207 256 6222

Crawley Business Centre
Stephenson Way, Threebridges
West Sussex, RH10 1TN

0203 435 6923

enquiries@madigangill.co.uk
www.madigangill.co.uk

Rochford Hundred Rugby Club

**Free
Quote**

Just telephone or email
your requirements

pl@n
GRAPHIC DESIGN

**20%
OFF**

Any design work for
first time customers

For All Your Graphic Design Needs

Telephone: **01702 469035**

Email: plangd@live.com Web: www.plangraphicdesign.co.uk

27 Eros Avenue, Southend-on-Sea, Essex SS2 4GN

**NEW CLUB SHOP
IS NOW OPEN**

Full brochure is available on our website:

www.rochfordrugby.com

Email:

shop@rochfordrugby.com

TO PLACE YOUR ORDER

Rochford Hundred Rugby Club - Telephone 01702 544021 - Website www.rochfordrugby.com

Acknowledgments



COMEX2000
Network & Communication

Unit 3 Stadium Business Court, Millennium Way,
Pride Park, Derby DE24 8HP

Telephone **+44(0)1332 34 74 74**

Fax **+44(0)1332 34 47 88**

Belvedere

Windows - Doors - Conservatories

Rochford Hundred Rugby Football Club members wish to thank all of our friends who have supported us through the years and this coming season.

We are grateful for the many donations made by various friends and business associates.

SEABRO
IT Services




1000
 COMPANIES TO INSPIRE
 BRITAIN 2017

THE SUNDAY TIMES
TOP TRACK
250
 2016

Grant Thornton
 An indicator for growth

Stanmore Contractors Limited is one of the UK's leading interior and exterior fit-out subcontractors. With a £123M annual turnover 2017-18, Stanmore has worked with the majority of the largest Developers and Main Contractors in the South East of England.

Stanmore is therefore able to combine 50 years' experience in construction methods with acquired expertise to become one of the most recognised brand names in today's market. As a result, Stanmore is not only able to offer a range of drywall partitions, wall lining, screed and ceilings; but also lightweight steel frames, insulated external render systems, through colour render, cladding systems, windows, doors, curtain walling structural steelwork, architectural metalwork and coping fascias.

Experience has seen Stanmore work on a diversity of construction projects, from residential houses and flats to complex schools, hospitals, community buildings, industrial warehousing and high-rise commercial / residential units.



Stanmore Contractors Limited Stanmore House, Gyproc Business Park, Church Manonway, Erith, Kent DA8 1DE

T 01322 446446 F 01322 448448 E mail@stanmoreltd.co.uk www.stanmoreltd.co.uk

Registered office as above Registered in England no. 02754550 VAT no. 625560641



A Nationwide Telecommunications, Rail & Utility Service Provider

are delighted to support

Rochford Hundred Rugby Club 2018/2019



Kelly Group

Kelly House, Fourth Way, Wembley, Middlesex HA9 0LH

Tel: + 44 20 8424 0909 Fax: +44 203 770 4212

www.kelly.co.uk