



London
Division 2
NORTH EAST



Rochford Hundred Rugby Football Club

Versus

Epping Upper Clapton



Saturday 25th November 2017 Kick Off 2.30pm



SARACENS
PARTNER CLUB

Referee - Gavin Scott (London Society)

Ball Boys - Under 13's

WWW.ROCHFORDRUGBY.COM • Main 1st XV Sponsors



To sponsor the club email:

COMMERCIAL@ROCHFORDRUGBY.COM

To hire the club email:

FUNCTIONS@ROCHFORDRUGBY.COM

To play for the club email:

COACHING@ROCHFORDRUGBY.COM

For up to date information join our Website at:

WWW.ROCHFORDRUGBY.COM

THE RUGBY PARK - MAGNOLIA ROAD - HAWKWELL - ESSEX - SS4 3AD



/RochfordRugby



@RochfordRugby



rochfordrugby

TELEPHONE

01702 544021

Training nights

Seniors - Tuesdays and Thursdays 7pm

Academy - Thursdays 7pm

Youth (U19-U18) - Tuesdays 7pm

Ladies - Wednesdays 7pm

Youth (U16-U13) - Wednesdays 7pm

Girls - Wednesdays 7pm

Little Scrummers (Age 2-6) - Saturdays 10am

Mini (U12-U6) - Saturdays 10am

Rochford Hundred Rugby Club - Telephone 01702 544021 - Website www.rochfordrugby.com

Rochford Hundred Rugby Club

Welcome to Rochford Hundred Rugby Club

Our Club History

Rochford Hundred was the brainchild of John Roden and Ernie Mills and was first discussed in November 1961 when the two met at the White Hart in Hawkwell. John had played at Ilford Wanderers and Ernie was an Old Tottonian so both were keen to play on their own doorstep. The inaugural meeting was held on the 4th January 1962 at the Bull Inn and was attended by a small group. The club now needed a ground and the assistance of County Councilor, later Alderman, Bill Wright was sought. He was appointed Chairman and very quickly secured the use of Rocheway School which had been closed due to its proximity to Southend airport.

This of course gave the club changing rooms and rugby pitches immediately. To get players an advert was placed in the Southend Pictorial and no less than 45 replies were received. Old Westcliffians had seen the advert and invited the new committee to a beer and cheese evening at the Gables. From this Rochford secured a fixture and an introduction to the London fixture Exchange. The first fixture was in fact against Billericay and not Old Westcliffians however. The name of the club had been suggested by John Roden after he saw a poster by Rochford Hundred Licensed Victuallers Association in the White Hart. Rochford Hundred was after all the name of the district.

The club also managed to secure a clubhouse in the car park of the Horse & Groom thanks to Mrs Innell, the licensee, and quickly set to work to make it ready for use for season 1962/63, although it was in use from March 1962.

It is worth noting that the first games were played in March and April 1962 and that Bob Light was captain.

In Season 1962/63 the club fielded 2 senior teams and a Colts team which is remarkable for a first full season. It is recorded that over 70 fixtures were arranged for this first season. Tony Davies was the 1st XV captain in this season. The Colts team was made up of a number of players from Rayleigh Secondary Modern School (now Fitzwimarc) and Sweyne School. Indeed David Allen (then a 16 year old) remembers being at one of the formation meetings at the Bull when he was still at school.

The first few years were not particularly successful but things changed when the likes of Mike Treasure came onto the scene. He was captain in 1965/66 and 1966/67 and was our first full Essex cap. His team went unbeaten for 18 months and were one of the highest scoring teams in the country. He was fortunate in having players of the calibre of Peter Coster, who was a great centre. Regrettably, Peter died recently in America, where he had been living for many years.

With playing success there came a desire to move to our own ground and in 1968 Jim Sowter, who used to write a column in the local press, printed a story that the club wished to purchase a field in the Rochford district big enough for pitches and a clubhouse. He received a letter from the lady secretary of Southend Manor Football club stating that they had an option on 10 acres of land in Magnolia Road. They were unable to raise the money to proceed and suggested that we might like to take over the option. Jim arranged a meeting between her and Ernie Mills and Ernie liked what he saw and took up the option. The land cost £3,200 and the purchase was completed in March 1969. The Rugby Football Union provided a loan of £2,100 towards the purchase.

The lengthy process of obtaining finance, building the clubhouse and preparing the pitches could now be started. In September 1970 a grant of £5,592 was offered by the Ministry of Housing and local Government and this was supplemented by grants and loans from the Essex Playing Fields Association and the National Playing Fields Association. In July, 1971 the Club gave the go-ahead to Muggleton's to start building based on an estimated cost of £11,320 of which we had raised only £8,000. The clubhouse was officially opened by Dickie Jeeps in April, 1974 when the 1st XV played against a strong Eastern Counties XV.

In 1971/72, when Malcolm Fleming was captain, there were two memorable games both in the Essex Senior Cup. The first game was against Old Bancroftians when Dickie Kent, who played scrum half for England, and Howard Waller, who was a renowned sevens player for Richmond, were in the Bancroft side. Rochford won 21-6 in a tremendous match and demonstrated that they had joined the top echelons of Essex rugby. The next round was against Barking Park Modern Old Boys at Rocheway and a pulsating match was finally won by Barking 14-12. To those who were present these were two of the finest matches played by Rochford.

The pitches in those early days at Magnolia Road were frankly dreadful but over the years there has been considerable work on them and they are now adequate for the task, if not perfect. In the late 1980's and early 1990's the clubhouse was expanded substantially with new changing rooms a gym and a new clubroom and kitchen. Floodlights were also installed.

Our youth section has gone from strength to strength and provides players for our 1st XV and other club teams. In fact our current 1st XV is almost entirely made up of former youth players. We have a ladies and girls section which is unusual among Essex Clubs. The Club is currently playing in London 2 (North East) and we can look back on 50 years of activity with considerable satisfaction.

Rochford Hundred Rugby Club - Telephone 01702 544021 - Website www.rochfordrugby.com

Rochford Hundred Rugby Club



COMEX2000
Network & Communication

Unit 3 Stadium Business Court, Millennium Way,
Pride Park, Derby DE24 8HP

Telephone +44(0)1332 34 74 74
Fax +44(0)1332 34 47 88

LEAGUE LUNCHES

25th November 2017 v **Epping Upper Clapton**

6th January 2018 v **Ipswich**

27th January 2018 v **Wanstead**

17th February 2018 v **Romford & Gidea Park**

10th March 2018 v **Old Cooperians**

7th April 2018 v **Norwich**

14th April 2018 v **Sudbury**

All members and friends are invited to attend any of the sponsored lunches at a cost of **£20.00** per head. Book your seats through **John Drinkwater** on **01702 204237, 07940 217899** or directly at the club. If you wish to be a match sponsor please email:

commercial@rochfordrugby.com



07970 254222
01708 453922
info@roofaid.co.uk



Rochford Hundred Rugby Club - Telephone 01702 544021 - Website www.rochfordrugby.com



Help your vision last a lifetime.

Book your Eye Test with an in-store expert.

Find us on High Street, Rayleigh.

Call 01268 771148 or book online at visionexpress.com

vision ~~ex~~press

VISION.TAKEN SERIOUSLY.

Ask in-store for details.



TRY!

The Wi-Fi Guy

**600% more facebook likes
and check-ins for your business.**

**Increase your reach, drive
customers to your door.**

web - www.wifiguy.co.uk

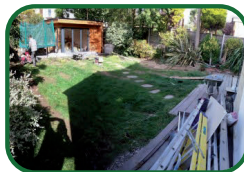
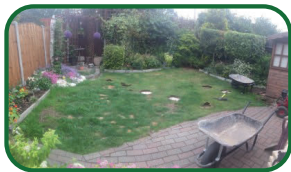
email - hello@wifiguy.co.uk




GRASSED UP .co.uk

“The Ultimate **Artificial** Grass”

- ✔ No Mowing
- ✔ No Watering
- ✔ No Mud
- ✔ Lowest Price
- ✔ Highest Quality



 : 07401 447905 / 01702 543781

 : sales@grassedup.co.uk



Proud Sponsors of Rochford Hundred Rugby Club

Rochford Hundred Squad 2017/18

STAFF & COACHES



Chris Green
Director of Rugby



Michael Guess
Head Coach



Chris Garstin
Backs Coach



James Kellard
Defence Coach



Ryan Stephenson
Defence Coach



Danny Cleare
Attack Coach



Jamie Douglas
Strength & Conditioning



John Branch
Physiotherapist



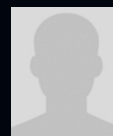
Graham Pratt
Manager



Adam Faherty
Commercial Manager



Kevin Anderson
Touch Judge



Billy Smith
Cameraman

FORWARDS *(sponsors under each name)*



Tom Corbet - Vice Capt.
Maguire Roofing Ltd



Luke Irvine
No Sponsor



Craig Strachan
Roof Aid



Michael Mark
No Sponsor



Liam Bass
Stanmore



Matthew Bevan
No Sponsor



Adam Ferrier
Fit Performance



Bradley Hughes
No Sponsor



Ricky Wiseman
Kelly Communication



Stefan King
Connaughts Site Investigations



Reece Levy
Seabro Scaffolding Ltd



Samuel Fombo
John Drinkwater



Luke Court-Rind
John Drinkwater



Max Bacon
Stoneview Construction



Scott Horsburgh
Grassed Up



Calum Brackett
Ajay Builders



Alan Barker
Mike Drinkwater



Darren Spencer
The Spencers (UK) Limited



Daniel Sowter
Dancework Studio



Stuart Whatling
Madigangill



Alex Harbrow
C&D Carpentry & Building

Chairman's Message

Good afternoon Ladies and Gentlemen,
welcome to Rochford Hundred Rugby Club,
I hope you enjoy your day with us.

Today we welcome Epping Upper Clapton to Magnolia Road and again I am expecting a tough well contested game which, going on last years matches, will show off some great skills by both teams.

Our match day sponsors are Swiftclean, Gary Nicholls has supported the club now for many years with sponsorship and the continuation of this is greatly appreciated.

We also have past 1st XV Captain Matt Norris hosting a reunion here today with a lot of our past players in attendance. Gents welcome and let us hope the rugby is as good as it was in your day. Always remember you can still get a run out with the social sides.

Our ball boys today are our under 13s who are also attending the lunch today. I would also like thank to all the mums, dads, helpers and coaches for the all time and effort you put in every week.

Work has started on the new mini playing area this week thanks to Craig North. I would also like to thank Sarah and Darren Guiver for their very generous support in making this project possible without them we would not have the land to use. Aviva community fund in which we entered closed this week so we now wait to see if we have managed to secure any funding to complete this project results are announced on the 28th of this month.

More and more people are seeing us at Rochford Hundred as a club looking to move forward and play a bigger part in the community. Our facilities are available to hire day or night so please keep us in mind for that special event you plan to host.

We have seen the repair of our lighting to the rear of the clubhouse to give us more training areas, but we have many other things that need to be done. So, if your workplace is looking to do some charity or work in the community please remember we can always use your assistance at the club.

Sponsors and donations to help us keep this great club moving forward are always needed. Our next big project of

installing new floodlights on the main pitch is currently being planned with initial costings looking to be around £30,000. This will allow us to play all our games at 3pm kick off as well as floodlit games at night.

Sponsorship has real benefits which include advertising your company in the club handbook, pitch side boarding's or on our social media sites which regularly see over 4k hits a week now. If you or anyone you know wants to be involved please talk to Adam Faherty who will be willing to build a package to suit your company needs and budget his telephone number **07981 965669**.

Lastly we have some RFU draw tickets available people will be selling these throughout the day and every ticket sold generates 90p for the club so please dig deep there are some great prizes up for grabs.

Always remember that our beautiful game is built on **RESPECT** so jeering or bad language is not acceptable at any time.

Peter Van Den Broeck

Rochford Hundred Rugby Club - Chairman



HOME TEAM SQUAD

ROCHFORD HUNDRED

RUGBY FOOTBALL CLUB

No.	Name	Sponsor
1	Craig Strachan	Roof Aid
2	Thomas Corbet	Maguire Roofing Ltd
3	Reece Levy	Seabro Scaffolding Ltd
4	Luke Court-Rind	John Drinkwater
5	Samuel Fombo	John Drinkwater
6	Stuart Whatling	Madigangill
7	Adam Ferrier	Fit Performance
8	James Kellard	A&R Elite Scaffolding
9	Steven Jay	Peter Jay
10	Matthew Needham	Kelly Communication
11	Mitchell Bennett	Comex 2000
12	Matthew Stewart (<i>Captain</i>)	M&C Enterprises
13	Thomas Pickering	Connaughts Site Investigations Ltd
14	Marcus Spremulli	
15	Mark Billings	Alan Peacock
<i>Substitutes</i>		
16	Ricky Wiseman	Kelly Communication
17	Daniel Sowter	Dancework Studio
18	Samuel Edwards	Associated Foreign Exchange

Today's Lunch Sponsors



AWAY TEAM SQUAD

EPPING UPPER CLAPTON

RUGBY FOOTBALL CLUB

No.	Name
1	Not Supplied
2	Not Supplied
3	Not Supplied
4	Not Supplied
5	Not Supplied
6	Not Supplied
7	Not Supplied
8	Not Supplied
9	Not Supplied
10	Not Supplied
11	Not Supplied
12	Not Supplied
13	Not Supplied
14	Not Supplied
15	Not Supplied
<i>Substitutes</i>	
16	Not Supplied
17	Not Supplied
18	Not Supplied

Referee

Gavin Scott (*London Society*)

Rochford Hundred Upcoming Events

NEW YEARS EVE PARTY

- Sunday 3 1st December
7pm til Late

- Tickets £5 per person
- £15 per Family of Four
- Children Under 5 Go Free
- Tickets on sale at the bar

London 2 North East League

Pos	Team	P	W	D	L	PF	PA	+/-	TB	LB	Pts
1	Rochford Hundred	9	9	0	0	558	77	481	9	0	45
2	Wanstead	9	8	0	1	309	185	126	8	0	40
3	Sudbury	9	7	0	2	447	144	303	8	1	37
4	Norwich	9	6	0	3	310	149	161	7	2	33
5	Harlow	9	6	1	2	319	286	33	6	0	32
6	Ipswich	9	4	0	5	165	334	-169	3	1	20
7	Epping Upper Clapton	9	4	0	5	184	229	-45	3	0	19
8	Romford & Glidea Park	9	4	0	5	177	342	-165	2	0	18
9	Old Cooperians	9	2	1	6	204	286	-82	2	3	15
10	Camtbrigian	9	2	0	7	160	338	-178	2	1	11
11	Woodford	9	1	0	8	206	351	-145	3	1	8
12	Chelmsford	9	0	0	9	110	430	-320	1	1	2

For the latest club news visit our website:

WWW.ROCHFORDRUGBY.COM

Rochford Hundred Rugby Club - Telephone 01702 544021 - Website www.rochfordrugby.com



INSTALCOM



O'CONNOR UTILITIES LTD
incorporating
INSTALCOM LTD

- TELECOMS
- ELECTRIC
- GAS
- WATER
- DIRECTIONAL DRILLING
- RAILWAYS
- MULTI UTILITY

Instalcom Limited

Instalcom House, Borehamwood Industrial Park
Rowley Lane, Borehamwood, Herts WD6 5PZ
Tel: 0208 731 4600 Fax: 0202 731 4601
www.instalcom.co.uk info@instalcom.co.uk

MANCHESTER OFFICE

Unit 10, Sanfold Lane, Levenshulme, Manchester M19 3BJ
Tel: 0161 248 9922 Fax: 0161 248 9933

O'CONNOR UTILITIES LTD

Rochford Hundred Squad 2017/18

FORWARDS *(sponsors under each name)*



Jake Knowles
Stanmore



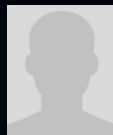
David Rufai
Mike Drinkwater



Andrew Bevan
JKS Group



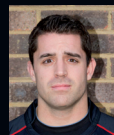
Louis Warner
Richard Warner



James Kellard
A&R Elite Scaffolding



Joseph Hurley
Elsie Hurley



Gregory Whight
Grassed Up

BACKS *(sponsors under each name)*



Matthew Stewart - Capt.
M&C Enterprises



Steven Jay
Peter Jay



Ricki Gould
Alchemy Horse Racing Systems



Tom Taylor
No Sponsor



Jack Doherty
Connaughts Site Investigations



Tom Ashton
The Spencers (UK) Limited



Jonathon Fitzpatrick
Madigangill



Louie Marshall
Dantel Construction



James Clark
No Sponsor



Mitchell Bennett
Comex 2000



Andy Baker
No Sponsor



Matthew White
Roof Aid



Matthew Needham
Kelly Communication



Josh Levy
Connaughts Site Investigations



Dan Dieu-De-Bellefontaine
A-Class Asbestos



Simon Ashton
No Sponsor



Ty Ngaluaf
Comex 2000



Danny Cleare
Pest Cleare



Tom Pickering
Connaughts Site Investigations



Lee Wiseman
No Sponsor



Mark Billings
Alan Peacock



Sam Edwards
Associated Foreign Exchange

Rochford Hundred Rugby Club

COURTS OF RAYLEIGH



FLOWERS OF DISTINCTION

*Bouquets – Weddings – Funerals – Corporate
Plants – Chocolates – Balloons – Gifts*

54 EASTWOOD ROAD, RAYLEIGH, SS6 7PJ
TELEPHONE: 01268 777983



COURTSOFRAYLEIGH.CO.UK



R & A Mechanical Services

Tel: **01702 524465**

22 Belgrave Road,
Leigh-on-Sea,
Essex SS9 5HE

Rochford Hundred Rugby Club – Telephone 01702 544021 – Website www.rochfordrugby.com

Rochford Hundred Rugby Club



CONNAUGHTS SITE INVESTIGATION LIMITED

35 GREEN LANE, LEIGH-ON-SEA, ESSEX SS9 5AP
TELEPHONE: 01702 528098
E-MAIL: CONNAUGHTS@AOL.COM

Rochford Hundred Rugby Club - Telephone 01702 544021 - Website www.rochfordrugby.com



MadiganGill

At **MadiganGill** we specialise in the supply of high quality labour and trades, site management staff, construction logistics and subcontract packages to the construction industry.

120 Moorgate
London
EC2M 6UR

0207 256 6222

Crawley Business Centre
Stephenson Way, Threebridges
West Sussex, RH10 1TN

0203 435 6923

enquiries@madigangill.co.uk
www.madigangill.co.uk

Rochford Hundred Rugby Club

**Free
Quote**

Just telephone or email
your requirements

pl@n
GRAPHIC DESIGN

**20%
OFF**

Any design work for
first time customers

For All Your Graphic Design Needs

Telephone: **01702 469035**

Email: plangd@live.com Web: www.plangraphicdesign.co.uk

27 Eros Avenue, Southend-on-Sea, Essex SS2 4GN

**THE CLUB SHOP IS
NOW AVAILABLE ONLINE**

PLEASE VISIT

**www.fentonsportsonline.com
[/rugby/562-rochford-hundred-rfc](http://www.fentonsportsonline.com/rugby/562-rochford-hundred-rfc)**

TO PLACE YOUR ORDER

*A stock of Shorts, Socks, Gum Shields, Studs and Club Ties
are available from the club.*

Rochford Hundred Rugby Club - Telephone 01702 544021 - Website www.rochfordrugby.com

Acknowledgments



COMEX2000
Network & Communication

Unit 3 Stadium Business Court, Millennium Way,
Pride Park, Derby DE24 8HP

Telephone **+44(0)1332 34 74 74**

Fax **+44(0)1332 34 47 88**

Belvedere

Windows - Doors - Conservatories

Rochford Hundred Rugby Football Club members wish to thank all of our friends who have supported us through the years and this coming season.

We are grateful for the many donations made by various friends and business associates.

SEABRO

IT Services

Rochford Hundred Rugby Club - Telephone 01702 544021 - Website www.rochfordrugby.com



Stanmore Contractors Limited is one of the UK's leading interior and exterior fit-out subcontractors. With a £123M annual turnover 2017-18, Stanmore has worked with the majority of the largest Developers and Main Contractors in the South East of England.

Stanmore is therefore able to combine 50 years' experience in construction methods with acquired expertise to become one of the most recognised brand names in today's market. As a result, Stanmore is not only able to offer a range of drywall partitions, wall lining, screed and ceilings but also lightweight steel frames, insulated external render systems, through colour render, cladding systems, windows, doors, curtain walling structural steelwork, architectural metalwork and coping fascias.

Experience has seen Stanmore work on a diversity of construction projects, from residential houses and flats to complex schools, hospitals, community buildings, industrial warehousing and high-rise commercial / residential units.



**STANMORE
CONTRACTORS**

OVER

50

YEARS SERVICE
IN CONSTRUCTION



Stanmore Contractors Limited Stanmore House, Gyproc Business Park, Church Manonway, Erith, Kent DA8 1DE

T 01322 446446 F 01322 448448 E mail@stanmoreltd.co.uk www.stanmoreltd.co.uk

Registered office as above Registered in England no. 02754550 VAT no. 625560641



A Nationwide Telecommunications, Rail & Utility Service Provider

are delighted to support

Rochford Hundred Rugby Club 2017/2018



Kelly Group

Kelly House, Fourth Way, Wembley, Middlesex HA9 0LH

Tel: + 44 20 8424 0909 Fax: +44 203 770 4212

www.kelly.co.uk