

STOURVIEW

STOURBRIDGE RUGBY OFFICIAL MATCHDAY PROGRAMME 2022-23



MATCH SPONSOR



STOURBRIDGE
v EXETER UNIVERSITY

14th January 2023 • Kick-off 3.00pm • National League 2 West



Exclusive Homes, Outstanding Locations

NEW HOMES IN

Worcestershire | Warwickshire | Staffordshire

PROUD SPONSORS OF **STOURBRIDGE RFC**



Tel: +44 (0)1384 446 200
www.kendrickhomes.co.uk



Contents

Welcome to Stourton Park, the home of Stourbridge Rugby Club. We hope that you enjoy your time here with us and look forward to seeing you again in the future.

Notes from the President	4
Director's Cut	7
Player Q&A	8
A Warm Welcome to...	11-12
Team Sheet & Forthcoming Events	14-15
Stourbridge in Action	16
Squad and Sponsorship Info	18-19
Around the Leagues	21
Stour Stats and Player Stats	24-25

Welcome to Stourton Park

STOURBRIDGE RFC,
STOURTON PARK,
BRIDGNORTH ROAD,
STOURTON,
STOURBRIDGE DY7 6QZ

01384 395000

rugby@stourbridgerugby.com
www.stourbridgerugby.com

Officers

PRESIDENT: **RICHARD BARON**
CHAIRMAN: **MILES EDGE**
HON. SEC: **PAUL DAVIDSON**
TREASURER: **NIGEL PRICE**

Staff

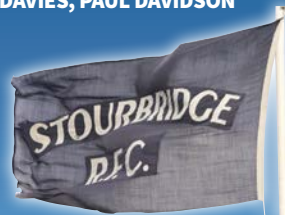
DIRECTOR OF RUGBY: **NEIL MITCHELL**
CLUB ADMIN MANAGER: **LOUISE PRICE**

Over 20 Years of League Rugby

STOURVIEW

PROGRAMME EDITOR: **MILES EDGE**
Photographs: **CERI DAVIES, PAUL DAVIDSON**
and **ANDY COOK**

Design and print:
Bloomfield Ltd.
01789 490528
See our advert
on page 19



Notes from The President

After another tough weekend last time out for our sides, today the first fifteen entertain Exeter University.

The Lions had a tough away day last week at Stafford, and here at home, the first's ran second in the League Clifton close with the match cut short due to a serious leg break for the Clifton scrum half Danny Openshaw. We all wish him a speedy recovery.

Some exciting additions to the squad and the evergreen Robbie Hurrell giving us real hope for a much better second half of the season. Watch this space and let us keep up the great support that we saw last weekend.

We welcome Mid-table Exeter today and let us hope that we can give them a good run and start to improve our position.

Off the field, we had a successful New Year's Eve party, and I thank again all of those who were instrumental in organising this.

Over Christmas, the Committee and a few volunteers took to the areas of the ground that have needed a bit of TLC for many years, weeding the pitch, cleaning the stands, and moving tons of leaves.

I thank the volunteers, and would give special Mention to Cody Cheshire and Jackson Wall, two youngsters from our Junior sections who gave up their holiday and Christmas time to come and help us in the rain. Both boys are invited to meet the players and run out with the team as a thank you.

Cody joined us last week and Jackson today. Future Club Captains I would think.

As a committee we meet every week and discuss many things. Fundraising for the club and events for our members are important to us.

We have a great Idea for May which I think will be brilliant for all members and their children. I will just keep my powder dry on this one for a week or two, but we are really excited about how we can use the Marquee in May on the Saturday after the Corporate lunch. Watch this space.



Regarding the Corporate Lunch, our esteemed Chairman has once again pulled out the stops and secured Mike Gatting and Matt Dawson to speak at the event. Invitations will be going out in February, and if you have any questions, please give Miles a call.

If you have any Ideas for other events, I would be really pleased to have a chat. Should we have a Greek Night, a Curry Night, a comedy night? I would love to hear your ideas. My mobile number is – 07523961690.

Good luck to all our teams today, thank you to our coaches and volunteers as always and hope to see you in the club for a beer after the game.

Rich

HIGGS^{LLP}

PROUD TO BE SUPPORTING
STOURBRIDGE
RUGBY FOOTBALL CLUB
IN 2022/23

3 Waterfront Business Park
Brierley Hill
West Midlands
DY5 1LX

Email: law@higgslp.co.uk
Call us: **0345 111 5050**

higgslp.co.uk





Revelan

UK Limited

Wishing Stourbridge Rugby Club
every success for this season

As Asset Managers for Revelan Group Plc
we continue to look for Property Investment
and Development Opportunities.

Contact Nick Schwartz

on 0121 561 6050

F: 0121 561 6051 E: nick.schwartz@revelan-uk.co.uk

Revelan UK Limited

Crown House, 82-85 Malt Mill Lane,
Halesowen, West Midlands B62 8JJ

T: 0121 561 6050 **F:** 0121 561 6051

Director's Cut

Welcome to Stourton Park...

We are fortunate to have a second game of the season at home following our defeat to Clifton last weekend. The game was competitive despite the huge gap in league positions and had it not been for a poor kicking decision in the last minute of the first half and two missed tackles in the first minute of the second half we would have very much been in the contest. The game was halted with 14 minutes to go due to a very serious injury to the Clifton scrum half Danny Openshaw and our best wishes go to him from all the players, staff and supporters at Stourbridge RFC.

Clifton deserve their position in the league and were strong, clinical and worthy of their second top spot. Although we have recruited some strong additions to the back line over Christmas, we still lack a recognised fly-half, with both Matt Moseley and Michael Heaney covering the key position for the last two outings. However, at level four our frailties are easily found out and the importance of the orchestration of that command position cannot be underestimated. At the time of writing this dilemma will hopefully have been addressed by today and hopefully we can put round pegs in round holes.

On the injury front both our recognised fly-halves Mike Penn and Chris Scott are still recovering from their respective broken legs. Ben O'Sullivan is awaiting surgery on his leg. Arthur Morgan shoulder injury has flared up again and Will Roach and Jacob Dennison are struggling with a groin and concussion issues respectively. Matt Perks, Alex Maxwell and Mike Worthington all have long term work commitments, but we are getting there on numbers and should see Will and Chris back in the

mix by the end of the month.

Our opponents today Exeter University have fared well this season, as have all the University sides who can draw on huge player pools and resources. This is good for the game as when these talented players leave University, they populate the National Leagues in their respective hometowns. We played well at Exeter earlier in the season but during the last 15 minutes we let the result run away from us. We view this game this afternoon as a vital encounter to re-boot our season and want to build on the many positives from last week, so please get behind the boys this afternoon. We will need every voice behind us over the next eleven games.

Enjoy the day...

Mitch

**Neil Mitchell,
Director of
Rugby**

Supported by


www.thecrownoldswinford.co.uk



Player Q&A with...

Arron Hackett

DATE OF BIRTH: 1st July 2004

POSITION: Tight Head prop

HEIGHT: 6' 11" **WEIGHT:** 110kg

NICKNAME: Hacks

PREVIOUS CLUBS:

Stourbridge since Under 12's

WHAT/WHO MADE YOU PLAY AT

STOURBRIDGE: Spencer Bailey

TOUGHEST OPPONENT:

Beechen Cliff School in ACE semi-finals

BEST SPORTING ACHIEVEMENT:

Playing Rugby Sevens at Rosslyn Park

FAVOURITE SPORT: Rugby

FAVOURITE FOOD: Steak

FAVOURITE FILM: Brave Heart

FAVOURITE TV PROGRAMME:

Only Fools and Horses

MOST EMBARRASSING MOMENT:

Standing naked in a pub when someone stole my clothes

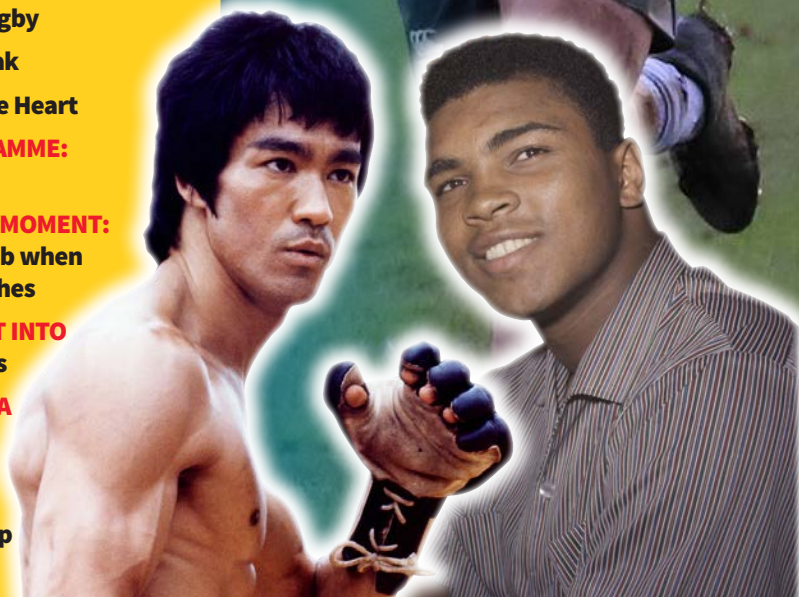
WHAT WOULD YOU PUT INTO

ROOM 101: Footballers

IDEAL FIVE GUESTS AT A

DINNER PARTY:

Tyson Fury,
Muhammad Ali,
Bruce Lee, Stefan Thorp
and my Dad





DELIVERING CONCRETE SOLUTIONS

THROUGHOUT THE WEST MIDLANDS
AND BEYOND

Tel: 01384 660 650
www.accumixcontracting.co.uk



STOP



PAUSE



REWIND

Don't bin it, sell it.



fieldings
AUCTIONEERS LTD

FIELDINGS AUCTIONEERS, WE MAKE THE ORDINARY EXTRAORDINARY

Specialists in the sale of:

Vinyl records | memorabilia | toys and diecast | records players | instruments and equipment | first edition books | movie posters | cameras



01384 444140 | info@fieldingsauctioneers.co.uk

fieldingsauctioneers.co.uk

Mill Race Lane, Stourbridge, DY8 1JN

BUTCHER WOODS

Corporate Recovery

For independent specialist insolvency and
corporate recovery advice contact
Rod Butcher or Richard Goodwin

79 Caroline Street, Birmingham B3 1UP

Tel: **0121 236 6001** Fax: **0121 236 5702**

Email: rod.butcher@butcher-woods.co.uk
richard.goodwin@butcher-woods.co.uk

www.butcher-woods.co.uk

We welcome today's opponents...

Exeter University RFC

Contributed by **Dave Garratt**

We extend a very warm welcome to the players, officials and supporters of Exeter University Rugby Club. They are yet another club making their first ever visit to Stourton Park. This season's restructuring of the leagues has certainly seen some new faces visiting Stourton Park. Including today we have played eight home games so far this season and six of them have been against opponents we have never met before in a league fixture.

Topsham

Exeter play their home games at the University of Exeter Topsham Sport Ground, four miles south east of Exeter city centre. Topsham (population 5,500) is a village-sized town in Devon in the district of Exeter, sitting on the east side of the River Exe, between Exeter and Exmouth. Topsham's position, offering a sheltered harbour to seagoing trade, enabled it to thrive as a port and a centre for both fishing and shipbuilding. There are many Dutch-style houses dating from its time as a cotton port. Many of these houses are built using Dutch bricks, brought over as ballast from the Netherlands as wool was exported to the Netherlands. After a period of decline over the first half of the 20th century, Topsham has increasingly become a desirable and high-value residential location. In addition to its architecture the town is of interest for its proximity to nature reserves for wading and migrating birds, such as RSPB Bowling Green Marsh on the Exe Estuary, the whole of which is a Site of Special Scientific Interest (SSSI).

History of Exeter University Rugby Club

The origins of the Exeter University Rugby Football Club can be traced back to the old teams of St Luke's College, founded in 1839. The first rugby match took place in 1860 against Exeter Grammar School. By 1872, Exeter Rugby Football Club had been formed and the club's inaugural match was against St Luke's College. By the 1950s college rugby in the United Kingdom had become a major influence upon the game as a whole.

In 1957, Devon won the County Championship with St. Luke's providing six members of the team. The 1960s and 1970s witnessed regular fixtures between St Luke's College and clubs such as Bristol, Gloucester, Rosslyn Park and Wasps.

Annual matches, home and away, against Loughborough College were established in 1969. These games ensured that both sides would be remembered as two of the most powerful student rugby clubs. In 1978 St Luke's College amalgamated with the University of Exeter. Much of their success and anticipated success can be attributed to the University's Sports Scholarship recruitment drive and the close links that have been forged with the premiership team, Exeter Chiefs RFC.

Exeter University

Exeter University has four campuses: Streatham and St Luke's (both in Exeter); and Truro and Penryn (both in Cornwall). The University ranks in the top 20 in many UK rankings and is one of the UK's elite Russell Group of research-intensive universities. Exeter University Athletic Union is the organization responsible for administering all aspects of sporting activity at the university. Activities range from recreational sport to competitive fixtures at local, national, and international level. The AU runs 50 Sports Clubs which facilitates, amongst other sports, rugby union, association football, American football, hockey, lacrosse, cricket, netball, golf, rowing and sailing.

...continued over

Exeter University RFC

A Warm Welcome (continued)

Exeter University and the Leagues

The university entered the league pyramid a fair way down the tiered system.

Successive championship winning seasons: Devon 2 in 2011-12, and Devon 1 in 2012-13 brought them upwards to play at level 7, in Western Counties West. Two further successive promotion campaigns in 2016-17 and 2017-18 elevated them to level 5 rugby in the South West Premier league.

Last season they completed their remarkable rise through six levels of the league structure to achieve National league status by winning the South West Premier and tier 4 rugby. The restructuring of the leagues at level 4 in readiness for this season saw them placed in National Two West where we meet today.

Main Honours:-

South West Premier Champions: 2021-22

South West 1 Promotion Play-off winner: 2017-18

Western Counties West Champions: 2016-17

Cornwall/Devon Champions: 2013-14

Devon 1 Champions: 2012-13

Devon 2 Champions: 2011-12

Earlier This Season

Stourbridge travelled to Topsham in September to face Exeter University for the inaugural league game between the teams. Exeter had started the season with three straight wins whilst Stour had suffered three straight defeats. Exeter quickly changed those records to four wins and four defeats as they out scored Stour by seven tries to four in a 45-24 victory. Two late tries secured the win that made Exeter the early league leaders while leaving Stour in the bottom spot.

Today's Game

We continue our start to the New Year with a second successive home game against a team having a much more successful season than ourselves. Our new league visitors to Stourton Park will present us with a serious challenge. Whilst we wish the best of luck to our visitors we need Stourbridge to extract pay back

for our earlier defeat at Topsham, and deliver us the much needed points a win would bring.

Exeter University RFC and Exeter Chiefs RFC

During Exeter Chiefs recent rise to the Premiership and ultimately the Premiership title, the success of the university teams have not gone unnoticed. The Chiefs have stuck to their roots in producing top-class players from their own academies, with Exeter University RFC sitting high in their pecking order.

Tony Rowe OBE, Chairman and Chief Executive of Exeter Rugby Club has been a driving force in the development of the working relationship between the Chiefs and the University of Exeter. Rob Baxter, Director of Rugby at Exeter Chiefs and former Head Coach of the University's rugby club, has recognised and praised the University's contribution to the professional programme.

In order to maintain continuity and a clear pathway between the two clubs, Chiefs provide player coaches to each of the University's 10 BUCS sides, with former player Haydn Thomas heading both the University's 1st XV and Exeter Braves. He gained 211 caps for Exeter Chiefs as they rose through to the Premiership. Some of the University players make it to the Chiefs' Premiership side include internationals such as: - Henry Slade (England) Sam Skinner (Scotland), Jack Maunder (England), Christ Tshiunza (Wales) Sam Maunder and Richard Capstick (both England U20).

Today's Fixtures

Stourbridge v Exeter University

Loughborough Students v Hornets

Redruth v Hinckley

Barnstaple v Newport

Leicester Lions v Luctonians

Bournville v Dings Crusaders

Clifton v O Redcliffians



www.adamhewitt.com

Proud to provide
continued support to
Stourbridge Rugby
Football Club
as a main sponsor



www.adamhewitt.com

Weekly Online Auctions of
Agricultural and HGV Salvage
10.00am every Tuesday

www.adamhewitt.com

Tel: 01562 773222

Email: info@adamhewitt.com

Match Sponsor



GEORGE GREEN LLP

George Green is delighted to act as Match Day sponsor at this afternoon's game. It is always a great pleasure to support local endeavour, especially where it involves commitment, passion and a love of what you do which I expect to see in abundance on the field of play today. George Green is proud to support Stourbridge Rugby Club and looks forward to continuing their association with the club for many years to come.

David Stevenson,
Chief Executive, George Green LLP

Match Officials

Referee: Mr. James Dowds

Assistant Referees: Mr. Mark Summerhayes and Mr. Adrian Holmes

We welcome James to his second visit to Stourton Park having overseen our 25-54 loss to Loughborough Students on September 10th. 28 year old James is a Project Manager who played No. 8 for Beaconsfield RFC. He took up the whistle back in 2008. Yet to join the National Panel he is on the National League Match Official Team (NLMOT). His career highlight was to represent the Buckinghamshire Society on exchange to Minnesota.

Friday May 12th 2023 OUR ANNUAL CORPORATE LUNCH IN THE MARQUEE

This year's lead speakers will be MATT DAWSON, BBC Sports columnist, Strictly Come Dancing star, Question of Sport Captain, England and British and Irish Lions scrum-half and in the year of The Ashes victorious Ashes captain MIKE GATTING.



Lunches are held before every home game. Guests are welcome. Prior reservations are advised. For further information on any of our events contact the Club on 01384 395000 or see the events section of our website at www.stourbridgerugby.com

**Our Next
Home Match...**

Team S

Stourbridge

MATT MOSELEY

WILL GILDERSON

ARTHUR MORGAN

ASHLEY BECK

DAN RUNDLE

JACOB FEWTRELL

MICHAEL HEANEY

MARK GEORGE

JACK LEA

CHAD THORNE

ROBBIE HURRELL

GARIN STANDING

JASPER SMITH

LOUIS MIFSUD

NIGEL MUKARATI

BENCH FROM...

TOM RIMAN

STEF THORP

BEN MEAKING

JOSH OLVER

TOM LUCAS

OLI CLARE

ADAM STURDY

HAYDEN LINK

Team personnel may be subject to change

Stourbridge

Saturday 28th January

Sheets

Exeter University

BEN HAMMERSLEY

BENJY JOSELAND

ARCHIE HILL

ZACK WIMBUSH

HUGO HUGHES

SAM WALKER

NIALL ARMSTONG

JACOB MORRIS

OLIVER WEBB

TOM GULLEY

JOE BAILEY

MILO HALLAM

WILLIAM DE BOEHLER

SAM HIGGINSON

JOSH THORNE

BENCH FROM...

ELLIOT YOUNG

JARED WILLIAMS

RONAN KELLY

JAGO BAILEY

TOBY FERGUSON

change after printing of programme

e v Hinckley

2023 - Kick off 3.00pm

Forthcoming Events...

Saturday January 21st

Join us on a trip to the seaside...

we are off to sunny Weston-Super-Mare to see the First XV play Hornets. Put your name on the notice board or email Rich Baron: richardbaron806@yahoo.com



Your local award winning station.
Great music, the latest local news, sports, travel,
interviews and much, much more.
Everything you need to know about the
Black Country in one place.

**BROADCASTING ACROSS THE
BLACK COUNTRY
102.5 FM • ONLINE**

@wearebcr

blackcountryradio.co.uk
Never miss a show - listen again via our website



BARBERRY

PROPERTY DEVELOPMENT & INVESTMENT

PROUD SUPPORTERS OF
STOURBRIDGE RUGBY
CLUB

Actively seeking further land, development and investment opportunities

www.barberry.co.uk

01562 731 300



Local Manufacturing, Global Supply

RECRUITING NOW

ACROSS PRODUCTION,
ENGINEERING & TECHNICAL,
AND HEAD OFFICE FUNCTIONS.

Hadley Group is a world leader in
advanced cold rolled steel technology,
with manufacturing facilities around
the world.

Enquire about our vacancies today

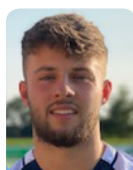
recruitment@hadleygroup.com

The Pla



FINN BRIDGEWATER

Sponsored by:



OLLY CLARE

Sponsored by:
ORTHO SOLUTIONS GROUP



CALLUM CLARK

Sponsored by:
THE CORNISH PASTY BOX



MARK GEORGE

Sponsored by:
EMPIRE FITNESS



OLLY GITTOES

Sponsored by:



MICHAEL HEANEY

Sponsored by:



JACK LEA

Sponsored by:
GRACE & GEORGE



HAYDEN LINK

Sponsored by:
PAUL DAVIDSON



THOMAS LUCAS

Sponsored by:



ALEX MAXWELL

Sponsored by:



CLARKSON McLEOD

Sponsored by:
THE CORNISH PASTY BOX



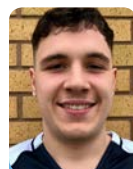
BEN MEAKIN

Sponsored by:



LOUIS MIFSUD

Sponsored by:
SECOND CITY RAVE INFLATABLES



ARTHUR MORGAN

Sponsored by:
GRIFF COMMUNICATIONS



DMITRI MORRISON

Sponsored by:



MATT MOSELEY

Sponsored by:



NIGEL MUKARATI

Sponsored by:
RSM



BEN O'SULLIVAN

Sponsored by:
MDSL



ASHER OPUKO-FORDJOUR

Sponsored by:



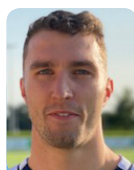
DALLAS ORORO

Sponsored by:



MIKE PENN

Sponsored by:
MARK PENN



MATT PERKS

Sponsored by:



JACOB PIGGOTT DENISON

Sponsored by:



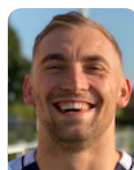
RHYS PRITCHARD

Sponsored by:
ISAE GROUP



WILL ROACH

Sponsored by:



DAN RUNDLE

Sponsored by:
PETER THOMPSON



CHRIS SCOTT

Sponsored by:
MDSL



GARIN STANDING

Sponsored by:

We are always on the lookout for further player sponsors so if you would be interested in sponsoring one of the players please contact Miles Edge or Richard Stanley for further information

ayers...

**ADAM STURDY**

Sponsored by:

**CHAD THORNE**

Sponsored by:

**STEFAN THORP**Sponsored by:
**THE BEARDED
CHEF, SHROPSHIRE****SAM WILSON**

Sponsored by:

**MIKE WORTHINGTON**

Sponsored by:

and Staff...

**NEIL MITCHELL**

Sponsored by:

**ALEX DAVIDSON**

Sponsored by:

**RICHARD STANLEY**

Sponsored by:

**STEVE MANN**

Sponsored by:

**JIM WILLIAMS**

Sponsored by:

**FRANCIS
TRINHAM**

Sponsored by:

**Director of
Rugby****1st Team
Manager****Hon Medical
Officer**

- LITHO & DIGITAL COLOUR PRINTING
- IN-HOUSE GRAPHIC DESIGN
- MARKETING BROCHURES, LEAFLETS & BOOKLETS
- NEWSLETTERS & MAGAZINES
- BUSINESS STATIONERY, ENVELOPES & NCR FORMS
- WEDDING STATIONERY, CHRISTMAS CARDS, CALENDARS ETC.

bloomfield

PRINT & DESIGN

 UNIT 7B
 WATERLOO INDUSTRIAL ESTATE,
 WATERLOO ROAD, BIDFORD-ON-AVON,
 WARWICKSHIRE B50 4JH

enquiries@bloomfieldprinters.co.uk
01789 490528
www.bloomfieldprinters.co.uk



The Bhandal Group of
Dental Practices are located
throughout the Midlands



We offer a full range of dental treatments
in all our modern practices with patient
care being our upmost concern and to
help the most nervous of patients being
made to feel at ease by our well trained
staff.



*If your in need of dental treatment
Please call us now to make your
appointment*



To find your local practice or for further
information, please visit our website at
www.bhandaldentalpractices.co.uk

or alternatively call us on

0121 561 3526

Practices In Your Area

Cradley Heath

Dudley

Blackheath

Stourbridge

Brierley Hill

Bromsgrove

Bilston

Stoke-On-Trent

Edgbaston

Northfield

Coventry



Around the Leagues

Contributed by **Ian Cole**

Last week's loss against a strong Clifton side means that we are now 11 points adrift of Bournville and Barnstaple with only 11 games remaining. This is partly courtesy of a five point deduction for failing to fulfil our away fixture against Leicester Lions. There are a glut of teams above us around the 20 point mark so, if we can string together some wins over the next few weeks all is not yet totally lost. Hopefully our significant injury problems will improve and help give us some relief.

At the top of the table Leicester Lions now hold an 11 point lead ahead of Clifton with Hinckley and Redruth a further 4 points behind.

Top Scorers

Matt Moseley is our top try scorer with 11 followed by Jack Lea on 9 and Arthur Morgan on 6. Mike Heaney has now been able to resume kicking duties so hopefully our conversion percentages will now return to normal.

Other Midland Teams

In the Championship, Coventry had a fine win at Nottingham on Boxing Day and are now comfortably in third place. Ealing's lead at the top has been cut to only two points over Jersey. Ealing lost for the first time this season last week at Caldy - never

an easy place to visit.

In National One, Moseley lost at an improving Esher last week but are comfortably in ninth place - well clear of a relegation spot. This league is led by Sale who are four points ahead of Rams but have played one game more. Three teams will be relegated from this league due to the fact that there are now three feeder leagues from National Two. The bottom three are currently Hull, Leeds and Taunton.

In the other two National Two leagues the current pacesetters are Sedgley Park, closely followed by Fylde in the North and Blackheath who are well clear of Old Albanian in the East.

In the Midlands leagues, DK are six points ahead of Bridgnorth

at the top of Regional One Midlands. The leaders in Regional One South West (the other feeder league to ours) are Cambourne. Stourbridge Lions lost at Stafford last week and are four points behind Uttoxeter at the bottom of their table and have played two games more.

Today's Fixtures

Apart from our game against Exeter today, leaders Leicester Lions entertain Luctonians whilst of the other teams at the bottom end of the table, Bournville are at home against Dings and Barnstaple are at home against Newport.

LEAGUE TABLE - SSE National League 2 West

Team	Pld	W	D	L	F	A	PD	TBP	LBP	Points	Adj
LEICESTER LIONS	14	13	0	1	449	258	191	13	1	66	0
CLIFTON	14	11	0	3	533	266	267	11	0	55	0
HINCKLEY	13	10	1	2	378	299	79	9	0	51	0
REDRUTH	14	10	0	4	512	325	187	10	1	51	0
DINGS	13	10	0	3	409	336	73	9	1	50	0
LUCTONIANS	14	9	0	5	442	229	213	9	3	48	0
EXETER UNIVERSITY	13	9	0	4	403	359	44	8	1	45	0
LOUGHBOROUGH STU	15	5	2	8	484	471	13	12	6	42	0
OLD REDCLIFFIANS	12	5	0	7	319	375	-56	7	2	29	0
HORNETS	14	3	0	11	354	488	-134	7	4	23	0
NEWPORT	14	3	0	11	278	556	-278	7	3	22	0
BARNSTAPLE	14	4	0	10	233	412	-179	3	2	21	0
BOURNVILLE	15	2	1	12	324	529	-205	6	5	21	0
STOURBRIDGE	15	1	0	14	329	544	-215	7	2	8	-5



ADVANCED ENGINEERING & TECHNOLOGY RECRUITMENT

Evolving with the engineering and technical industries for over four decades, we are uniquely equipped to source professionals in:



ELECTRIC, CONNECTED
& AUTONOMOUS
VEHICLES (CAV)



ADVANCED
MATERIALS



RESEARCH &
DEVELOPMENT



ELECTRONICS
& SOFTWARE



CYBER
SECURITY

Our specialist team of technical and industry professionals offer a consultative approach bringing an in-depth understanding of the skills, experience and personal attributes required for roles from entry-level to board level appointments.

#FutureSkills #AdvancedEngineering #JonLeeLife

jonlee.co.uk

SOLUTIONS THROUGH
UNDERSTANDING



linkedin.com/company/jonathan-lee-recruitment



clientenquiries@jonlee.co.uk



@jonlee_recruit



@jonlee_recruit

ENVILLE

BREWERY



Proud to Sponsor
Stourbridge Rugby Club

				F	A
3rd September	REDRUTH (3.00pm)	Away	Lost	8	43
10th September	LOUGHBOROUGH STUDENTS (3.00pm)	Home	Lost	25	54
17th September	CLIFTON (2.30pm)	Away	Lost	19	59
24th September	EXETER UNIVERSITY (2.00pm)	Away	Lost	24	45
1st October	HORNETS (3.00pm)	Home	Won	55	25
15th October	HINCKLEY (3.00pm)	Away	Lost	24	40
22nd October	NEWPORT (SALOP) (3.00pm)	Home	Lost	27	37
29th October	LUCTONIANS (3.00pm)	Away	Lost	19	36
5th November	DINGS CRUSADERS (3.00pm)	Home	Lost	24	29
12th November	OLD REDCLIFFIANS (2.00pm)	Away	Lost	27	50
26th November	BOURNVILLE (3.00pm)	Home	Lost	29	34
3rd December	LEICESTER LIONS (2.00pm)	Away	Cancelled		
10th December	BARNSTAPLE (3.00pm)	Home	Lost	15	31
17th December	LOUGHBOROUGH STUDENTS (2.00pm)	Away	Lost	21	35
7th January	CLIFTON (3.00pm)	Home	Lost	12	27
14th January	EXETER UNIVERSITY (3.00pm)	Home			
21st January	HORNETS (2.30pm)	Away			
28th January	HINCKLEY (3.00pm)	Home			
18th February	NEWPORT (SALOP) (2.15pm)	Away			
25th February	LUCTONIANS (3.00pm)	Home			
4th March	DINGS CRUSADERS (3.00pm)	Away			
11th March	OLD REDCLIFFIANS (3.00pm)	Home			
25th March	BOURNVILLE (2.30pm)	Away			
1st April	LEICESTER LIONS (3.00pm)	Home			
15th April	BARNSTAPLE (3.00pm)	Away			
22nd April	REDRUTH (3.00pm)	Home			

Player Stats 2022-23

	App	Rep	Tries	Cons	Pens	Drops	Pts
ASHLEY-BECK, Mark	1						0
BITIRIM, Timothy	4		4	6			32
BRIDGWATER, Findlay	6	4					0
CLARE, Oliver	1	1					0
CLARK, Callum	3	2					0
GEORGE, Mark	13		2				10
GILDERSON, William	1						0
GITTOES, Ollie	9	2	1				5
HACKETT, Arron	4	4					0
HEANEY, Michael	12	1	1	7			19
HEARD, Archie	1		1	2			9
HURRELL, Robbie	4						0
KUCERA, Billy	2						0
LEA, Jack	13		9				45
LINK, Hayden	6	1					0
LUCAS, Thomas	9	2	2				10
MAXWELL, Alex	5	5					0
MCLEOD, Clarkson	8	7					0
MEAKIN, Ben	7	1					0
MIFSUD, Louis	10	1					0
MOORE, Ciaran	1						0
MORGAN, Arthur	9		6				30
MORRISON, Dmitri	1	1					0
MOSELEY, Matt	13		11	5	1		68
MUKARATI, Nigel	10		3				15
OLVER, Josh	3	2	1				5
OPUKO-FORDJOUR, Asher	3	2	1				5
ORORO, Dallas	7	1	3				15
O'SULLIVAN, Ben	11	6					0
PENN, Michael	5			6	2		18
PERKS, Matt	2						0
PIGGOTT-DENISON, Jacob	8	6					0
PRITCHARD, Rhys	3						0
RIMAN, Thomas	1	1					0
ROACH, William	7		1				5
RUNDLE, Dan	6		1				5
SCOTT, Chris	1				1		3
SMITH, Jasper	4		2				10
STANDING, Garin	6						0
STURDY, Adam	4	3					0
THORNE, Chad	11	1					0
THORP, Stefan	12	2	3				15
WALKER, Joey	7		1				5
WILSON, Sam	11		1				5
TOTALS			54	26	4	0	334



PROUD SPONSORS OF
STOURBRIDGE RUGBY CLUB

DEFINED BY BEER

THE UK'S LEADING ALE BREWER WITH AN UNRIVALLED
PORTFOLIO OF GLOBAL BEER BRANDS

FROM RIGHT HERE IN THE UK...



... AND FROM AROUND THE WORLD



6 BREWERIES • 25 BRAND FAMILIES • 3.6 PINTS SOLD EVERY SECOND
4.8 BOTTLES SOLD EVERY SECOND • NO.1 UK BEER EXPORTER
BREWING 1.1 MILLION BARRELS EVERY YEAR • 8 MASTER BREWERS



metalwork safe in our hands

- Precision Engineering & Quality Assured Presswork
- Tool Making
- Product Design & Development
- Laser Profile Cutting
- Welding & Fabrication
- Powder Coating



DUDLEY TOOL
PRESSWORK

Dudley Tool Presswork Engineering Ltd
Tel: 01384 571181
Email: brackets@dudley-tool.co.uk

www.dudley-tool.co.uk

Corporate | Employment | Litigation | Commercial Property



Family Law | Residential Conveyancing | Private Client

"Making a difference and helping clients succeed"

Located in Cradley Heath and Wolverhampton, George Green LLP is one of the Midlands' leading law firms serving both businesses and individuals.

Responsive, quick, professional, pragmatic – we are all this and more. Advice that is tailored to you, your needs, your goals. Your success is our success!

We are proud to support Stourbridge Rugby Club



CRADLEY HEATH OFFICE:

195 High Street, Cradley Heath B64 5HW

Tel: 01384 410 410

David Stevenson • 01384 340 522
[dstevenson@georgegreen.co.uk](mailto:d Stevenson@georgegreen.co.uk)

WOLVERHAMPTON OFFICE:

19 Waterloo Rd, Wolverhampton WV1 4DY

Tel: 01902 424 927

Mark Vandaele • 01902 796 930
[mvandaele@georgegreen.co.uk](mailto:m vandaele@georgegreen.co.uk)

www.georgegreen.co.uk