

Members Handbook 2016-17



www.worcesterhockey.co.uk



Paul Sharratt

info@cathedral-kitchens.com
www.cathedral-kitchens.com

01684 567888

• Local • Reliable • Affordable

Welcome

to the new Season 2016-2017

As we welcome in a new season, I hope we have all been greatly inspired by the efforts of the Womens GB team at the Rio Olympics and their Gold Medal winning performance. On behalf of everyone at Worcester Hockey Club, I offer our congratulations, and in doing so, I hope each of us takes some of that inspiration with us into the new season. They have given us a platform on which to build, and an opportunity we must not waste. Let's take that opportunity with both hands and make this a memorable season.

Our Mens 1st XI have a challenging season ahead in the Premier League and they will need all our support. Get down and watch them when you can. Do the same for our Womens 1st XI who face challenges in their league, and if you want to support the future stars, take in some Badger Hockey. Let's inspire all our teams to deliver.

I want to use this opportunity to ask you to give as much support to Paul Simons in his demanding role as Head of Club Coaching. We need to develop our coaches from within and Paul has developed a coaching career pathway which I'd encourage anyone interested in doing some coaching to learn more about.

We welcome many new faces to the club, some returning, some completely new. We hope you enjoy your season with us. We again welcome visiting teams and umpires, and ever, we are indebted to McDonald's for their sponsorship.

Good luck to you all in the coming season.



Pete Pedrick, Chairman



CONTENTS

Club History.....	p4
The Club Today.....	p5
Senior Team Results	p6
Junior Section Report	p7
Who to contact	p9
Mens Fixtures.....	p10/11
Womens Fixtures.....	p12
Badgers Fixtures.....	p13
Pitches & Training.....	p14
Disciplinary Code	p14
Meet the Teams	p16
Meet the Captains.....	p18
Meet the Coaches.....	p20
Clubman/Clubwoman.....	p21
Thank you's	p22
WHC Committee	p23
Noticeboard	p24
Safeguarding.....	p29/31
Code of conduct for all players.....	p33
Code of conduct for parents / carers and spectators.....	p34
Policy on Anti-Bullying.....	p34

Design by IndigoMoon Design

t: 01905 354315 e: info@indigomoondesign.co.uk

Photo Credits: A Shipley; S Flisher; A Shepherd; Worcester Evening News

www.worcesterhockey.co.uk



With many thanks to Ron Lane (former President & Secretary) who collated the early Club history.

The Early Days

The inspiration to form a hockey club in Worcester came initially from the officers stationed at Norton Barracks. They had a team but no one to play against regularly so they approached W.E.Wyatt of Worcester who picked up this suggestion with enthusiasm and WHC came into being. These very early days were not without considerable difficulties due mainly to a paucity of members and a scarcity of teams to play. However slowly but surely other new clubs were formed at Pershore, Leominster, Bridgnorth and Kidderminster so something approaching a proper fixture list was established. Finding a suitable home ground also proved problematic until 1902 when WHC became established at the old county ground at Boughton – an excellent venue. Here the Club prospered and soon a second and third team came into being.

Post 1914-1918 War

Following a state of suspended animation during the war, the Club was restarted in September 1919. Whilst the membership held up once the ground at Boughton was no longer available a period of unsatisfactory ground arrangements ensued with the Club at one point being in danger of folding. Happily survival was achieved by securing the use of a pitch at Perdiswell.

Post 1939-1945 War

After a war-time lapse the Club was again reformed though finding a secure, suitable home ground proved as difficult as ever and it was not until 1962-63 that agreement was reached with the Old Elizabethans' Association to use their cricket ground at Perdiswell on a regular basis. This brought a period of welcome stability. By the time I joined the Club in 1968 there were four men's sides. Two years later we had grown to six teams. In 1979 the Worcester Ladies Hockey Club joined with us. 1983 saw a major development for the Club when we joined forces with a cricket club and a shooting club to become Worcester Norton Sports Club with pitches and a clubhouse located – would you believe at Norton Barracks. A return home indeed! The Club continued to thrive there for the next 20 years but the advent of artificial grass surfaces meant that a change of venue was necessary so we had to sever our connection with WNSC and with the support of Worcester City Council we established ourselves at the Nunnery Wood Sports Complex for the next seven years. This period of stability came to an end when the decision was taken to close the bar - which was primarily our after match tea facility- but we continue to use the pitches here alongside our use of the facilities at the University with whom we now have very welcome close links.



Self-evidently the outstanding achievement of 2015-2016 is the success of the Men's 1st X1 in gaining promotion to the Midlands Premier Division. Whilst the whole squad deserves our heartiest congratulations special recognition must be extended to our coach, Jon Sprague, (See p21) and to the Player of the Year for the 1st X1 Tom Schubert - who scored 43 goals a fantastic achievement. As our chairman said at our recent AGM these are examples of members 'stepping up to the plate' when such efforts are needed and of course a number of members continue to do so in the many roles needed to keep the club functioning but more members do need to come forward. This summer a number have heeded this call so we welcome Nick and Julie Fielden who between them will take on the task of Fixtures Secretary; Georgie Ballard who takes over as Club Secretary from Paul Simons who has been appointed as Head of Club Coaching. Terry Duffy and Gerry Ogle are to look after coaching for the Women's section. Matt Sharratt has agreed to be our Fundraising manager so a big 'Thank you' to all of you. But we still need more support for our large and vital Junior section particularly in the area of coaching; we still do not have a Communications officer or a Membership Secretary thus to quote Pete Pedrick again:-

- **Can you step up and give that extra 10% more ?**
- **Will you step forward and offer to help maybe for just an hour or even 30 minutes a week ?**
- **Will you think about what you can do; don't wait to be asked, step forward and offer !**

For the record we did achieve other important objectives that we set ourselves last season. So our application to EHB to renew our ClubFirst status was successful; discipline on the field of play did improve and must continue to do so; the Club Rules were revised , updated and subsequently agreed at the AGM as the new Club Constitution. The latter was designed principally to ensure that all the important day to day decisions relating to playing matters were made by players or their representatives forming the formally constituted Section Sub-Committees.

Looking to next season and beyond clearly we will want to consolidate and improve upon our current playing position. To help to achieve this as a major objective we must be more effective in establishing a comprehensive coaching policy in accordance with the recently produced EHB Guiding Principles. It has to be acknowledged that WHC has been too slow to recognise the importance of such a policy and practice of player development. There are encouraging developments in the success of expanding elite training in the Men's section and there are plans to continue to strengthen the range and quality of coaching in the Junior section. To this end Paul Simons is to establish coaching training within the club to both increase the number of coaches we so urgently need and to give opportunities to our present coaches to further develop their expertise.

Finally as ever, Thank You's. A big one to you for all for the privilege of being elected as your President for another year, it is indeed an honour. A smaller but no less sincere one to Andrew Shepherd and Stewart Flisher who at the last minute provided additional photos for this edition.

Robin Brighton, President

Team Results

Team	League	Played	Won	Drawn	Lost	Goals for	Goals Against	Points	League Position
Men's 1st X1	Midlands 1	22	18	1	3	95	47	55	1st Promoted
Men's 2nd X1	West Midlands Prem.	20	15	2	3	77	24	53	2nd
Men's 3rd X1	Midlands 1	22	8	1	13	48	54	25	9th
Men's 4th X1	Central League West Midlands Prem.	20	12	3	5	62	35	39	2nd
Men's 5th X1	Central League West Midlands Prem.	20	8	5	7	38	39	29	4th
Men's 6th X1	Central League South West 1	20	8	5	7	46	35	29	5th
Severnians	Central League South West 1	20	8	4	8	40	40	28	7th
Men's 8th X1	Central League South West 2	18	5	1	12	31	64	16	9th
Ladies's 1st X1	Midlands League Division 2	18	5	5	8	24	31	20	7th
Ladies's 2nd X1	Midlands League Feeder West	18	1	3	14	21	80	6	10th
Ladies's 3rd X1 Division 2	Worcestershire	17	8	2	7	41	46	26	8th
Ladies's 4th X1 Division 2	Worcestershire	18	0	0	18	13	132	0	10th
Badgers Pippins	Conference South	18	17	1	0	92	7		
Badgers Potters	Conference South	17	2	0	15	15	58		
Badgers Pumas	Conference North	18	12	5	1	47	19		

Junior Section

Report from Mary Travers 2015-2016 season

We have had a very good season, with the u10 girls finishing on an exciting high note by taking the runners-up place at the Midlands Finals. Our young u12 girls' team was unlucky to draw Beeston twice in the Midlands Finals day but they performed creditably as did the boys u12s and u14s and the girls u14s, all of whom played in regional finals. From u8s to u18s we have entered teams in local tournaments and/or national competitions and have given opportunities to more young people than ever before to enjoy playing hockey.

Unfortunately our England u16s player, Lucy Walton, had to move to another club; even so, we have more talent in the making, as evidenced by the number of boys and girls represented in the JRPC in 2015. Cerys Preston joined Wales u16s squad and Sam Langston played for the British Colleges. Congratulations to them and all our young players who made it to representative levels during the year.

Our three mixed Badgers' teams did well with the Pippins notching up an astonishing loss-free season (17 wins and 1 draw). The Pumas had an outstanding record too, and some of their players were only 11 or 12 years of age and in their first season of 11-a-side hockey. While the Potters had few wins, most of this team was also new to 11-a-side hockey and despite the results the young players made great progress during the season.

The commitment and enthusiasm of our amazing band of coaches, umpires, administrators and other volunteers has made all of this possible. Very special thanks goes to Claire Lane (Junior Administrator & Manager for various junior teams, Simon Lane and James Morgan for their dedication to coaching u10s and u12 girls and Pumas, as well as coaching on every available Sunday at Nunnery Wood. James Gerrish as our Junior Head Coach, and Paul Merrell,

Andy Hadley, Terry Duffy and Tom Dalton also deserve special thanks for their leading roles this year. So do Jane Ralph, Nick Fielden, Pete Hood (Pippins), Colin Rhead (Potters), Rob Bonham, Paul Simons, Sarah Waddington, Sarah Pepperall, Ben Kent, Andy Dorman (especially for his work with the u10s & u12s boys), Brock Miller, Richard Head, Jane White, Jean & Barrie Roberts, Sarah Lloyd (Potters), Catherine Hurley, Dean Ferrier (fixtures) and all the other parents, coaches, umpires and managers who have helped out during the season. I would also particularly like to thank our young volunteers who have made a huge contribution on the coaching (and umpiring!) front: Chris & Matt Woods, Megan Stigant, Jess Ferrier, Henry Durie, Alastair Borwell-Fox, Charlotte Hurley, Abby Deller, Charlotte Berlett, Ellie Hollis, Cerys Preston, Lucy Stratton, Adam Boulton, Stuart Boocock, Katie Barnes and everyone who has helped regularly in one way or another.

My thanks to Julie Deller who gave invaluable support with the Clubs First Club accreditation process; Also to Jane White for her help in organising the Junior Presentation Evening held on 1 July.

Very many thanks again to everyone who has supported junior hockey in any way this season.

Mary Travers, Junior Section Co-ordinator



U14 Boys



IAPS U11 NATIONAL HOCKEY CHAMPIONS



© 2015 DE Photo

Open Days in
October, January
and May

01905 613391
www.rgsw.org.uk

Independent Day School
Boys and Girls aged 2 - 18 years

Worcester Hockey Club - Contacts

President:	Robin Brighton	Tel: (H) 01886 830021	(M) 07977 542768
Chairman:	Peter Pedrick	Tel: (H) 01905 352017	(M) 07876 761962
Vice Chairman:	Andrew Waters	Tel: (H) 01905 381440	(M) 07730 577969
Club Treasurer:	Andrew Howie	Tel: (H) 01684 576308	(M) 07968 820269
Asst. Club Treasurer:	John Ranscombe	Tel: (H) 01905 764168	(M) 07899 711572
Club Secretary:	Georgie Ballard	Tel: (M) 07875 209921	
Co-ordinator - Juniors:	Mary Travers	Tel: (H) 01905 820752	(M) 07825 537790
Co-ordinator - Men:	Matt Hooper	Tel: (M) 07921 639502	
Co-ordinator - Women:	Catherine Hurley	Tel: (H) 01905 753666	(M) 07974 024344
Fixtures Secretary:	Julie & Nick Fielden	Tel: (H) 01905 619722 (M) 07974 833743	(M) 07588 051515
Head of Club Coaching:	Paul Simons	Tel: (H) 01905 21484	(M) 07720 403935
Umpires Co-ordinator:	Garth Davis	Tel: (H) 01684 567164	
Fundraising Officer:	Matt Sharratt	Tel: (H) 01684 573233	(M) 07912 262798
Club Welfare Officers:	Robin Brighton & Becca Bramhall (M) 07810 002010		
Captain Men 1st X1:	Rob Ridell	Tel: (M) 07834 412843	
Manager Men 1st X1:	Andy Hadley	Tel: (H) 01905 360501	(M) 07851 287044
Captain Men 2nd X1:	Chris Watling	Tel: (M) 07595 932033	
Captain Men 3rd X1:	Alex Kloda	Tel: (H) 01527 271270	(M) 07843 005281
Captain Men 4th X1:	Elliot Lamond	Tel: (M) 07875 842618	
Captain Men 5th X1:	Paul Simons	Tel: (H) 01905 21484	(M) 07720 403935
Captain Men 6th X1:	Steve Neal	Tel: (H) 01386 793594	
Captain Men 7th X1:	Tom Waters	Tel: (M) 07803 715174	
Captain Men 8th X1:	George Chakko-George	Tel: (M) 07977 071542	
Captain Women 1st X1:	Jo Walker	Tel: (M) 07766 227725	
Captain Women 2nd X1:	Lucy Chick	Tel: (M) 07814 876050	
Captain Women 3rd X1:	Georgie Ballard	Tel: (M) 07875 209921	
Contact Women 4th X1:	Kate Manton	Tel: (M) 07927 670232	
Captain Veterans Men:	Reg Sharratt	Tel: (H) 01684 562218	(M) 07796 850864

WHC MENS FIXTURES 2016-17

WHC MENS FIXTURES 2016-17

Team League Division	Mens 1st XI 1st Team League Midlands 1	Mens 2nd XI 2nd Team League West Midlands Premier	Mens 3rd XI 3rd Team League Midlands 1	Mens 4th XI Central League West Midlands Premier	Mens 5th XI Central League West Midlands Premier	Mens 6th XI Central League South West 1	Severnians Central League South West 1	Mens 8th XI Central League South West 2
17-9-16	Stourport (A)	Lansdown 1 (A) (F)	Lansdown 2 (H) (F)	Bridgenorth 4 (H) (F)	Lansdown 3 (A) (F)	Lichfield 6 (H) (F)	Lichfield 7 (A) (F)	Ludlow 3 (H) (F)
24-9-16	West Bridgford (H)	Lichfield 2 (H) (F)	Lichfield 3 (A) (F)	Lichfield 4 (H) (F)	Lichfield 5 (A) (F)	Edgbaston 6 (A) (F)	Edgbaston 7 (H) (F)	Edgbaston 8 (H) (F)
1-Oct-16	North Stafford (H)	North Stafford (A)	Shrewsbury (H)	Olton & West Warwick (H)	Bridgnorth 4 (A)	Stourport 5 (H)	Olton & West Warwick 5 (A)	Khalsa 4 (A)
8-Oct-16	Khalsa (A)	Hampton-in-Arden (H)	Northampton (A)	Worcester 5 (A)	Worcester 4 (H)	Worcester 7 (A)	Worcester 6 (H)	Stratford 5 (H)
15-Oct-16	Harborne (H)	Harborne (A)	Burton (H)	Edgbaston 4 (A)	Stourport 4 (H)	Old Hales 4 (A)	Stratford 4 (H)	Hampton-in-Arden 4 (A)
22-Oct-16	Bournville (A)	Bournville (H)	Barford Tigers (A)	()	Edgbaston 4 (A)	Sutton Coldfield 6 (H)	Old Hales 4 (A)	Sutton Coldfield 9 (H)
29-Oct-16	Barford Tigers (H)	Barford Tigers (A)	Boots (H)	Barford Tigers (A)	Sutton Coldfield 5 (H)	Bromsgrove 4 (A)	Bournville 4 (H)	Olton & West Warwick 6 (A)
5-Nov-16	Belper (A)	Bridgnorth (H)	Sutton Coldfield (A)	Harborne 5 (H)	()	Edgbaston 5 (H)	Sutton Coldfield 6 (A)	Redditch 4 (H)
12-Nov-16	Loughborough Town (H)	Telford (A)	Loughborough (H)	Bridgnorth 4 (A)	Warwick 4 (H)	Olton & West Warwick 5 (A)	()	Edgbaston 8 (A)
19-Nov-16	Lichfield (A)	Edgbaston (H)	Stourport (A)	Stourport 4 (H)	Barford Tigers 4 (A)	Stratford 4 (H)	Bromsgrove 4 (A)	Old Hales 5 (H)
26-Nov-16	Notts University (H)	()	Bournville (H)	Sutton Coldfield 5 (A)	Harborne 4 (H)	Bournville 4 (A)	Edgbaston 7 (H)	Bromsgrove 5 (A)
3-Dec-16	**	Warwick (H)	Warwick (A)	Warwick 4 (H)	Harborne 5 (A)	Ludlow 2 (H) (F)	Edgbaston 5 (A)	Kidderminster (H) (F)
10-Dec-16	**	Stratford (A)	Warwick University (H)	Harborne 4 (A)	Olton & West Warwick 4 (H)	Edgbaston 7 (A)	Stourport 5 (H)	Old Silhillians 4 (A)
14-Jan-17	North Stafford (A)	North Stafford (H)	Shrewsbury (A)	Olton & West Warwick (A)	Bridgnorth 4 (H)	Stourport 5 (A)	Olton & West Warwick 5 (H)	Khalsa 4 (H)
21-Jan-17	Khalsa (H)	Hampton-in-Arden (A)	Northampton (H)	Worcester 5 (H)	Worcester 4 (A)	Worcester 7 (H)	Worcester 6 (A)	Stratford 5 (A)
28-Jan-17	Harborne (A)	Harborne (H)	Burton (A)	Edgbaston 4 (H)	Stourport 4 (A)	Old Hales 4 (H)	Stratford 4 (A)	Hampton-in-Arden 4 (H)
4-Feb-17	Bournville (H)	Bournville (A)	Barford Tigers (H)	()	Edgbaston 4 (H)	Sutton Coldfield 6 (A)	Old Hales 4 (H)	Sutton Coldfield 9 (A)
11-Feb-17	Barford Tigers (A)	Barford Tigers (H)	Boots (A)	Barford Tigers 4 (H)	Sutton Coldfield 5 (A)	Bromsgrove 4 (H)	Bournville 4 (A)	Olton & West Warwick 6 (H)
18-Feb-17	Belper (H)	Bridgnorth (A)	Sutton Coldfield (H)	Harborne 5 (A)	()	Edgbaston 5 (A)	Sutton Coldfield 6 (H)	Redditch 4 (A)
25-Feb-17	Loughborough Town (A)	Telford (H)	Loughborough (A)	Bridgnorth 4 (H)	Warwick 4 (A)	Olton & West Warwick 5 (H)	()	Edgbaston 8 (H)
4-Mar-17	Lichfield (H)	Edgbaston (A)	Stourport (H)	Stourport 4 (A)	Barford Tigers 4 (H)	Stratford 4 (A)	Bromsgrove 4 (H)	Old Hales 5 (A)
11-Mar-17	Notts University (A)	()	Bournville (A)	Sutton Coldfield 5 (H)	Harborne 4 (A)	Bournville 4 (H)	Edgbaston 7 (A)	Bromsgrove 5 (H)
18-Mar-17	Stourport (H)	Warwick (A)	Warwick (H)	Warwick 4 (A)	Harborne 5 (H)	()	Edgbaston 5 (H)	Kidderminster (A) (F)
25-Mar-17	West Bridgford (A)	Stratford (H)		Harborne 4 (H)	Olton & West Warwick 4 (A)	Edgbaston 7 (H)	Stourport 5 (A)	Old Silhillians 4 (H)

** Mens 1st XI fixtures for 03 Dec & 10 Dec will be played 17 Sept & 24 Sept

F=Friendly

www.worcesterhockey.co.uk



WHC WOMENS FIXTURES 2016-17

Team League Division	Womens 1st XI Midland League Division 2	Womens 2nd XI Midland League Feeder West	Womens 3rd XI Worcestershire League Division 2	Womens 4th XI Worcestershire League Division 2
17-Sep-16	Oxford Hawks (A) (F)	Lichfield 3 (H) (F)	Old Hales (H) (F)	
24-Sep-16	Kettering 1 (H)	Bournville 1 (H)	Stourport 4 (A)	Redditch 2 (A) (F)
1-Oct-16	Stone 1 (A)	Harborne 3 (A)	Old Hales (H)	()
8-Oct-16	Notts University 1 (A)	Bromsgrove 2 (H)	Harborne 4 (A)	Stourport 5 (A)
15-Oct-16	North Stafford 1 (H)	Stourport 3 (H)	Bromsgrove 3 (H)	Droitwich 2 (A)
22-Oct-16	Belper 2 (A)	Pershore (A)	Kidderminster (H)	Lichfield 5 (A) (F)
29-Oct-16	()	Bromsgrove 1 (A) (F)	Lichfield 4 (H)	Stourport 6 (H) (F)
5-Nov-16	Solihull Blossomf'd 1 (H)	Tenbury 1 (H)	Kings Heath 1 (A)	Kings Heath 2 (H)
12-Nov-16	Boots 2 (A)	Redditch (A)	Droitwich 1 (A)	Bromsgrove 4 (H)
19-Nov-16	Tamworth 1 (H)	Bournville 1 (A)	Stourport 4 (H)	Harborne 5 (A)
26-Nov-16	Warwick 1 (A)	Harborne 3 (H)	Old Hales (A)	Tenbury 2 (H)
3-Dec-16	()	Bromsgrove 2 (A)	Harborne 4 (H)	Bournville 2 (A)
10-Dec-17			Droitwich (A) (F)	
7-Jan-17	Cheltenham 2 (A) (F)	Cheltenham 3 (H) (F)	()	()
14-Jan-17	()	()	()	()
21-Jan-17	Stourport 2 (A) (F)	Stourport 3 (A)	Bromsgrove 3 (A)	Redditch 2 (H) (F)
28-Jan-17	Nuneaton 1 (H) (F)	Pershore (H)	Kidderminster (H)	Stourport 5 (H)
4-Feb-17	Kettering 1 (A)	Tenbury 1 (A)	Kings Heath 1 (H)	Droitwich 2 (H)
11-Feb-17	Stone 1 (H)	Redditch (H)	Droitwich 1 (H)	()
18-Feb-17	Notts University 1 (H)	Bournville 1 (H)	Stourport 4 (A)	Stourport 5 (H) (F)
25-Feb-17	North Stafford 1 (A)	Harborne 3 (A)	Old Hales (H)	Kings Heath 2 (A)
4-Mar-17	Belper 2 (H)	Bromsgrove 2 (H)	Harborne 4 (A)	Bromsgrove 4 (A)
11-Mar-17	Solihull Blossomf'd 1 (A)	Stourport 3 (H)	Bromsgrove 3 (H)	Harborne 5 (H)
18-Mar-17	Boots 2 (H)	Pershore (A)	Kidderminster (H)	Tenbury 2 (A)
25-Mar-17	Tamworth 1 (A)	Tenbury 1 (H)	Kings Heath 1 (A)	Bournville 2 (H)
1-Apr-17	Warwick 1 (H)	Redditch 1 (A)	Droitwich 1 (A)	

WHC BADGERS FIXTURES 2016-17

Badgers Pippins Badgers Conference South	Badgers Potters Badgers Conference South	
		17-Sept-16
Bromsgrove (A) (F)		24-Sep-16
Stourport (A)	Redditch (H)	1-Oct-16
Worcester Potters (H)	Worcester Pippins (A)	8-Oct-16
Bromsgrove Green (H)	Bromsgrove Red (A)	15-Oct-16
()	()	22-Oct-16
Lichfield (A) (F)	()	29-Oct-16
Old Halesonians (A)	Stourport (H)	5-Nov-16
Droitwich (H)	Bromsgrove Green (A)	12-Nov-16
()	Evesham (H)	19-Nov-16
Redditch (H)	Droitwich Spa (A)	26-Nov-16
Bromsgrove Red (A)	Old Halesonians (H)	3-Dec-16
Evesham (H)	West Bromwich (A) (F)	10-Dec-16
Stourport (H)	Redditch (A)	14-Jan-17
Worcester Potters (A)	Worcester Pippins (H)	21-Jan-17
Bromsgrove Green (A)	Bromsgrove Red (H)	28-Jan-17
Bromsgrove Red (H)	Old Halesonians (A)	4-Feb-17
Evesham (A)	West Bromwich (H) (F)	11-Feb-17
Lichfield (H) (F)		18-Feb-17
()	()	25-Feb-17
()	Evesham (A)	4-Mar-17
Redditch (A)	Droitwich Spa (H)	11-Mar-17
Old Halesonians (H)	Stourport (A)	18-Mar-17
Droitwich Spa (A)	Bromsgrove Green (H)	25-Mar-17



F=Friendly

Pitches & Training

Pitch No1. University of Worcester

St John's Campus, Henwick Grove, Worcester WR2 6AJ

Directions: Leave M5 at Junction 7. Follow signs to Worcester West/Malvern (left, down hill). Continue over next four roundabouts towards Hereford/Bromyard (following University signs). At last roundabout take 3rd exit into Worcester, continue over all traffic lights until in St Johns centre. Take left turn after Co-op (Henwick Rd). Go over railway level crossing, continue to end of road (1.25 mile). Campus on left as road bends. Main car park on right. Pitch next to car park.



Pitch No2. Nunnery Wood Sports Complex

Spetchley Road, Worcester WR5 2NL Tel 01905 357842

Directions: Leave M5 at Junction 7, take A44 towards Worcester approx 1 mile at end of dual carriageway fork sharp right at Oak Apple Pub. N.W.S.C. is 200 yards on left.

Pitch No. 3: Worcester Royal Grammar School

Grange Lane, Claines, Worcester WR3 7RR

Directions: Take A38 North out of Worcester towards Droitwich. Approximately two miles from City Centre at entrance to Fernhill Heath turn left into Grange Lane.

Training: at University of Worcester

Junior Boys 10+ and badgers: Thurs Evening 6.30-8.00pm

Goal Keeper Training Mixed: Tues Evening 6.30-8.00pm

Club Session Men: Thurs Evening 6.30-8.00pm Women: Tues Evening 6.30-8.00pm

Elite Session Men: Thurs Evening 8.30-9.30pm Women: Tues Evening 6.30-8.00pm

(by Invitation)

N.B. Training times at the University can be subject to change throughout the season. Please ensure you check training times via WHC website or with your team captain.

Training: at Nunnery Wood Sports Complex

Mixed junior U10's (as at 1/9/14 Y1-Y5) 9.15-10.45am U13-10 (as at 1/9/14 Y6-Y9) 10.30-12.00

Sunday mornings - commencing 18 September 2016

All members of the club are expected to be familiar with the Code of Conduct for all Junior and Senior Players. In addition the disciplinary code which came into effect last season.

Disciplinary Code

- Punishment for red cards would be as per the league rules.
- Yellow cards. If a player receives 3 yellow cards in a season she/he faces a 2 match ban. This applies only to league games.
- This can be appealed through the disciplinary sub-committee comprising of Peter Pedrick, Paul Simons and Nicola Gerrett.



Celebrate Your Success
On and Off the Pitch!

Enjoy the Finest Vintage &
Non Vintage Champagnes

Specialist Artisan
Champagne Suppliers

Gifts for all Occasions



www.champagnecollection.co.uk

enquiries@champagnecollection.co.uk

T: 01905 764946

SILVERFX
Custom Made Teamwear,
Leisurewear, Workwear & Schoolwear
Proud to
Support &
Supply
**WORCESTER
HOCKEY CLUB**
All Kit Now Available to Order Online
Just Visit The Clubs Page on Our Website
f www.SilverFx.info t
Tel: 01432 355231
SilverFxHereford SilverFx_Sports

for all things Hockey ...



19 Broad Street, Worcester TEL: 01905 22683

www.knowlesofworcester.co.uk

est 1884

Meet the Teams !

... another winning season !



Mens 1st



Mens 2nd



Womens 1st



Womens 2nd



Mens 3rd



Mens 4th



Womens 3rd



Womens 4th



Mens 5th



Mens 6th



Pippins



Potters



Mens 7th



Mens 8th



Pumas



Meet the Captains !



Jo Walker

Captain Women 1st X1
and Manager



Georgie Ballard

Captain Women 3rd X1



Lucy Chick

Captain Women 2nd X1



Kate Manton

Captain Women 4th X1

Hockey Timeline at WHC

Stage 1 - 'in2hockey' 7-a-side half pitch play
Age: Under 8, Under 10 & under 12. Mixed boys/girls

Stage 2 - Badgers 11-a-side full pitch play
Age: Senior School 11-16. Mixed boys/girls - with up to 2 adults allowed to play (but not score) to help/coach during the game
Grouped into 2 'squads' : Pippins • Potters

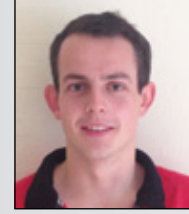
Stage 3 - Senior
Progress to Senior Men's & Women's sides from the age of 13

Stage 4 - Veterans : Over 40's and over 50's Mens



Rob Ridell

Captain Men 1st X1



Chris Watling

Captain Men 2nd X1



Alex Kloda

Captain Men 3rd X1



Elliot Lamond

Captain Men 4th X1



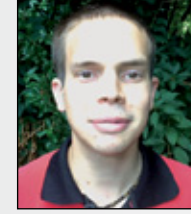
Paul Simons

Captain Men 5th X1



Steve Neal

Captain Men 6th X1



Tom Waters

Captain Men 7th X1



George Chako-George

Captain Men 8th X1



Andy Hadley

Manager Men 1st X1



Reg Sharratt

Manager Veterans



Meet the Coaches !



Paul Simons
Head of Club Coaching



Jon Sprague
Head Coach - Mens X1



James Gerrish
Head Coach - Juniors



Paul Merrell
Player Development Coach



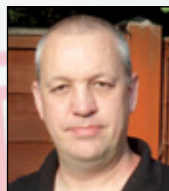
Gerry Ogle
Coach - Womens



Terry Duffy
Coach - Womens



Mary Travers
Club Coach



Andy Hadley
Club Coach



Honorary Life Members & Vice-Presidents

Honorary Life Members

Robin Brighton, Andrew Howie, John Phillips, Barrie Roberts, Mike Roberts

Vice-Presidents

Rob. Bell, Chris Chapman, Trevor Clarke, Brian Cowley, Derek Flynn, Jane Game, Pat. Hooley, Paul Merrell, Ron. Lane, Gerry Ogle, Jean Roberts, Pat. Sharratt, Janet Taylor, Tom Travers, Andy Waters, John Webb, Hazel Winter

Welcome New Coach

Head of Club Coaching



Paul Simons

Congratulations to Paul who has been appointed to this important and demanding role. Paul has been a committed club member for many years – serving as Club Secretary for the past 10 years and captaining the 5th X1 in his own energetic and vociferous way for almost as long! Paul is a very committed and experienced coach well versed and respected with the EHB Single System. In a club the size of WHC the task of bedding down an effective coaching policy and practice together with the other club coaches is a major goal identified within our overall strategy so our very best wishes are extended to you.

Congratulations Clubman & Clubwoman

Clubman of the year



Jon Sprague

Last year we welcomed Spraggy as our new Head coach for the Men's 1st X1. This year we salute him again with all members of the 1st X1 squad for gaining promotion to the Midlands Premier League. This achievement has come about through much hard work, no little skill and a degree of courage as it is not easy to move from being a player within the squad to being the coach and thus in charge of the same squad. Well done Spraggy for leading this squad and very good wish for the coming season.

Clubwoman of the year



Amy Lister

Amy has been a central figure within the Women's section for many years looking after the group of mainly young girls who comprise the 4th and 5th X1's. She has worked tirelessly as the captain and as a player offering constant encouragement and support to such an inexperienced group in often very difficult circumstances. Selflessly she has also filled in for other teams when needed - on one occasion playing in goal for the first X1 last season! She is much respected by all her colleagues and by the parents of the girls for whom she has been responsible so this recognition is richly deserved.



Thank you

... to all our many volunteers

The qualified coaches design and lead the coaching programme for the whole club but this programme could not be implemented without the commitment and enthusiasm of a whole range of other people who act as assistant coaches; parent helpers; age group team managers and administrators. We are enormously grateful to all those listed below for their tireless efforts on behalf of the Club.

Rob. Bonham	Simon Lane	Jane Ralph	Andy Dorman
Terry Duffy	James Morgan	Sarah Pepperall	Richard Head
Max Braddick	Peter Hood	Sarah Waddington	Jane White
Henrie Durie	Brock Miller	Adrian Shipley	Sarah Lloyd
Claire Lane	Colin Rhead	Ben Kent	Barrie & Jean Roberts

... and Umpires

(without you there would be no games!)



Garth Davis

Co-ordinator of Umpires

WHC Umpires

Catherine Hurley
Alex Kloda
Sian Lampitt
Guy Lewis
Alastair Marsh

Steve Matthews
Mike Megginson
Paul Merrell
Angie Parker
John Ranscombe
Mark Richardson
David Richmond
Barrie Roberts
Charles Robinson

John Senior
York Senior
Paul Sharratt
Reg Sharratt
Adrian Shipley

Paul Simons
Vince Smith
Jon Sprague
Andrew Howie
Chris Watling
Sarah Baggs
Helen Barnes
Inge Bevers
Rob Bonham
Jeremy Butterfield
Chris Chapman
Terry Duffy
Nick Fielden
Dave Gardner

Nat Garfield
James Gerrish
Ben Glass
Dan Granger
Andy Hadley
Andy Hares
Peter Hood
Matt Hooper
Andy Howie
Nigel Haddock
Andy Taylor
Andy Waters
Tom Waters



Worcester Hockey Club Committee



Robin Brighton

President



Matt Hooper

Co-ordinator - Men's



Peter Pedrick

Chairman



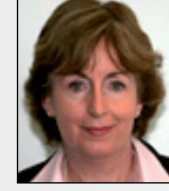
Catherine Hurley

Co-ordinator - Women's



Andy Waters

Vice Chairman



Mary Travers

Co-ordinator - Junior



Georgie Ballard

Secretary



Paul Simons

Head of Club Coaching



Andrew Howie

Treasurer



Nick Fielden

Fixtures Secretary



Julie Fielden

Fixtures Secretary



Don't Forget:

Senior Club Day - 4 Sept 2016
Junior Club Day - 11 Sept 2016

Annual End of Season Dinner
- March 2017

AGM - May 2017 (TBC)

Junior Presentation Evening
- May 2017 (TBC)

Please attend & support your Club!

NOTE: Worcester Hockey Club insurance does not cover personal accident. We advise players to take out their own each season.

You can find an
APPLICATION FORM
to join Worcester Hockey Club
on our website or contact either
of the club secretaries listed.

To order **CLUB KIT** visit
the SHOP on our club website
www.worcesterhockey.co.uk



Annual Junior
Presentation
Evening &
Ten Pin Bowling
Well done to all!



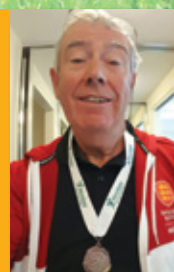
Well Done to Joe Sullivan -
Outstanding Junior Player
of the Year 2015-16

CONGRATULATIONS
to all teams and players
2015-16 Season



Well done
Tom Schubert,
43 goals in
20 games!
Voted player
of the year by
X1 team.

Congratulations to Barrie Roberts &
Vince Smith who both played for England
Over 70's in Australia this
summer. Vince in the England
Masters World Cup; Barrie in
'The Tournament' with LX Club
60. Both men won silver
medals, fantastic !



Pippins archery fun day



Austin Shipley at JRPC GK selection at Burton with 66 GKS! U16 Midlands

Subscriptions 2016:

Seniors.....	£120
Over 18's (as at 01 Sept) in FT Education or Unwaged.....	£70
Worcester Uni Students.....	£25
Non-Playing Members.....	£10
Juniors: 7-18yrs (as at 01 Sept).....	£70
Under 7	£65



Bensheim 2016



D C Gardner

Building Services of Hanbury

Established 1986

- HOME MAINTENANCE
- KITCHEN & BATHROOM SPECIALIST
- TILING
- HIGH CLASS PAINTING & DECORATING
- PURPOSE MADE TO MEASURE JOINERY
- LANDLORD INSPECTION & REPAIRS/REFURBISHMENTS
- SOFFITS, FASCIAS & GUTTERING
- QUALITY WORK FROM ESTABLISHED & EXPERIENCED TRADESMAN



References & Portfolio Available

Telephone: **01527 822659** or **07970 744770**

email: **davidgardner1709@gmail.com**

www.dcgardner-buildingservices.co.uk

FREE Estimates

**Member of Multiple
Trade Associations**

**Fully Insured Service
with Public Liability
£2m**



C.M. Ogle Ltd

Dispensing Chemist

Collection and delivery service

Health and travel advice

Hair and Beauty Clinic

Perfumery and Skincare specialists

Ogles Spa - for the ultimate spa treatments

1 High Street, Pershore, Worcestershire. WR10 1AB
Telephone: 01386 552890 or Pharmacy: 01386 554688
email: gogle@btinternet.com



**Proud
to support**



Worcester Hockey Club

17 The Foregate, Worcester WR1 3QF

**Monday to Wednesday 6am to 4am
Thursday to Saturday 6am to 11pm
Sunday 6am thru til 11pm**

Tybridge Retail Park, Hylton Road, Worcester WR2 5JS

Monday to Sunday 6am to 11pm

Elgar Retail Park, Blackpole Road, Worcester WR3 8HP

24 Hours 7 days a week

Safeguarding and Protection – Children and Young People

1. Recently England Hockey has published a new document entitled **–Safe D Safeguarding the Hockey family**. This publication (which is very readable) covers in five chapters:- Safeguarding Policy; Recognising Poor Practice and Abuse; Reporting Procedures; Useful contacts and a list of Good Practice Guidance Resources and templates available on line www.englishockey.co.uk/safe

Worcester Hockey Club is committed to and has signed up to this new guidance – see over page. Copies of SafeD have been made available to our senior coaches and officers within the Club, but all team captains, players, umpires in fact everyone with an involvement with Worcester Hockey Club is encouraged, indeed expected, to familiarise themselves with the content of this important document.

2. In keeping with the spirit of SafeD Worcester Hockey Club also expects everyone involved within the club to be aware of and to abide by the Code of Conduct for all Junior and Senior Players; (see page 29) the Code of Conduct for Parents/Carers and Spectators (see page 30) and The policy on Anti-bullying.
3. The Club Welfare officers will continue to ensure that everyone involved in coaching for the Club plus team captains will have a valid CRB/DBS clearance certificate and will have attended a Safeguarding and Protection of Children course once every three years. Qualified coaches are also required to have some First Aid training and we shall ensure that this is in place throughout 2015-2016.

Code of Equity and Behaviour

Worcester Hockey Club has formally adopted this code formulated by England Hockey. Thus all members are expected to respect the rights, dignity and worth of every person and to treat everyone equally within the context of their sport regardless of age, ability, gender, religious belief, sexuality or social/economic status. Members are encouraged to read the full version of this on the England Hockey website.



Photo Courtesy of Worcester News



Photo Courtesy of Worcester News

Hockey Club/Association Safeguarding and Protecting Young People Commitment



WORCESTER HOCKEY CLUB adopts England Hockey's Safeguarding and Protecting Young People in Hockey Policy, Procedures and Guidance to ensure all those in the hockey family have a safe and positive experience.

DEFINITIONS:

HOCKEY FAMILY - The hockey family includes all individuals, clubs, associations and other organisations involved in any capacity in the game of hockey, whether members of England Hockey or not. For the avoidance of doubt, this includes all players and anyone working within hockey (in a paid or voluntary capacity, and whether as an employee or on a self-employed or other work basis) including all coaches, umpires, referees and other officials.

YOUNG PEOPLE - Anyone under the age of 18.

CLUB - includes both hockey club and association.

WE WILL DO THIS BY:

- Recognising all young people participating in hockey (regardless of age, gender, race, religion, sexual orientation, ability or disability) have the right to play in an environment free from poor practice, abuse and harm.
- Ensuring all people who work in hockey at, or for, our club (including staff, officials, volunteers, team managers, coaches) have a responsibility for safeguarding young people and understand how the safeguarding policy and guidance applies to them.
- Ensuring all individuals working at, or for, the club are recruited in accordance with England Hockey's recruitment guidance.
- Ensuring all individuals working within hockey at, or for, the club are provided with support, through education and training, so they are aware of and adhere to England Hockey's Code of Ethics and Behaviour.
- Always approaching safeguarding with a young person perspective, ensuring the individual's wellbeing is the prime focus.
- Ensuring that the responsibility of determining whether or not abuse has taken place, lies with child protection experts, however it is everyone in hockey's responsibility to report concerns.

ROLES AND RESPONSIBILITIES

Worcester Hockey Club will ensure the name and contact details of the Welfare Officer are available:

- As the first point of contact for parents, young people and volunteers/staff within the club.
- As the main point of contact within the club for the England Hockey Safeguarding team as well as relevant external agencies in connection with safeguarding young people.
- As a local source of procedural advice for the club, its committee and members.

By signing this document, **Worcester Hockey Club** commits to the above.

Signed:

Print Name: **PETER PEDRICK**

Role: **CHAIRMAN**

Date: **04/07/2015**

HOCKEY CLUB/ASSOCIATION SAFEGUARDING AND PROTECTING YOUNG PEOPLE COMMITMENT



Code of Conduct for all Junior and Senior Players

As a playing member of Worcester Hockey Club, the Club expects that you will:

- learn the rules of hockey and play within them;
- remember that the safety and welfare of all players, officials and supporters is of paramount importance;
- support the Club's efforts to develop an open, caring and safe environment in which all adults and young people can enjoy hockey and make friends;
- abide by the Club Rules, Equity Statement and other policies/codes of practice as required;
- discourage unfair play and arguing with officials;
- set a good example by recognising fair play and applauding the good performances of all, including the opposition;
- publicly accept officials' judgements;
- keep to agreed timings for training and matches and inform the team manager / captain / coach as appropriate if you are unable to attend on time;
- pay the appropriate membership and match fees on time;
- wear suitable kit for training and match sessions as agreed with the team manager / captain / coach and ensure that gum shields (juniors) shin guards and suitable footwear are worn at all training and match sessions;
- use correct and proper language at all times;
- set a good example in post-match hospitality;
- help to ensure that Junior members do not consume alcohol or drugs of any kind or smoke cigarettes whilst on club premises or representing the club at competitions;
- never punish or belittle other players for losing or for making mistakes, and
- never force anyone to take part in sport.



Code of Conduct for Parents/Carers and Spectators

As a parent or carer of a Junior Member of WHC, the Club requests that you:

- encourage your child to learn the rules of hockey and play within them;
- support your child's involvement and help him/her to enjoy the game;
- support the Club's efforts to develop an open, caring and safe environment in which all children can enjoy hockey and make friends;
- discourage unfair play and arguing with officials;
- help your child to recognise good performance, not just results;
- set a good example by recognising fair play and applauding the good performances of all, including the opposition;
- publicly accept officials' judgements;
- use correct and proper language at all times;
- never punish or belittle a child for losing or for making mistakes, and
- never force your child to take part in sport.

The Club requests that all spectators at junior coaching sessions or matches / tournaments should abide by the above Code of Conduct.

Policy on Anti-Bullying

Worcester Hockey Club adopts England Hockey's Anti-Bullying Policy and is committed to creating and maintaining an environment in which all young people involved in hockey are free from bullying. Bullying is anything that is done with the intention of hurting or intimidating, frightening or upsetting another person. Bullying can take many forms:-

Emotional	persistently being unfriendly, excluding, tormenting, threatening gestures.
Physical	pushing, kicking, hitting, punching or any use of violence.
Racist	racial taunts or language, graffiti, gestures.
Sexual	unwanted physical contact or sexually abusive comments.
Homophobic	because of, or focusing on the issue of sexuality.
Verbal	name-calling, sarcasm, spreading rumours, teasing.
Cyber	All areas of the internet (including social networking sites), email and text messaging, misuse of technology i.e. manipulation of digital images

It should be noted that bullying may not only occur through face to face contact. Some bullying may be illegal and necessitate a report to police/children's social care.

The Club wishes to promote a **TELLING** culture and anyone who knows, or suspects that bullying is happening must take the matter seriously and report his/her concerns to an officer of the Club.

A FANTASTIC RANGE OF GIFTS FOR MEN

featuring favourite sports & past times whilst not forgetting "Number One Dads" Perfect gifts for men who love their sports and hobbies.



Visit our website to view our other ranges.
www.arora-design.co.uk
 Contact sales@arora-design.co.uk
 or call us on 01386 861666

ARORA
 — DESIGN —

BRINGING IDEAS TO LIFE



www.worcesterhockey.co.uk