



Welcome to the November Newsletter

This month we have news and video about the aerial rule, some thanks for you forbearance about the GMS outage from the Adult Leagues, upcoming dates from the Junior leagues team and last but far from least, a Finance update.

Finance Update

Finance for South Central Hockey is in the calm before the storm of the season billing. A few updates/requests.

- It is good practice for your Club TREASURER contact to be a generic email address - so that when your treasurer changes it is easy to handover the history
 - e.g. hockeyclub_treasurer@gmail.com or your own @domain if you have one
- Please make sure your Club treasurer's email address and telephone and name are all recorded correctly on the England Hockey Club Portal
- Dates for treasurer diaries: Annual membership and league fees will be issued in November.
 - H1 Appointed Umpire Invoice be issued at end of December. H2 Appointed Umpire Invoice be issued at end of April.

- Umpire expenses, if you have not sent your bank details to the SCH Finance team your expenses, will can't be paid finance@southcentral.hockey

Club treasurers, please pay invoices by return or if you have any queries please contact

finance@southcentral.hockey



Junior Section

The Junior Committee have managed to get 2 more volunteers to help with junior leagues. This is great news as last season was very difficult without this additional help .

Boys and girls u14 Tier1 leagues

there will be playoffs for the top 2 of each league north and south on 27th November details will be out soon.

Boys and girls u16 Tier1 leagues

There will also need to be play offs for u16 T1 but we are still trying to find a date.

Please make sure clubs update results as matches happen and please let us know if they have been rearranged.

Girls u18/Boys u18 & Girls u16/Boys u16

Matches will all be on 11th December .

Entries to Howard please by email:

Adultindoorcoordinator@southcentral.hockey



Key Junior contacts this season

Allan Donaldson – League results and questions -	sc.juniorleagues@southcentral.hockey
Judith Barton – Thames Valley Minis -	judith.barton@readinghockeyclub.org.uk
Oxfordshire Minis –	bicesterfoxcubs@aol.com
Hampshire Minis – Heather Windust -	secretary@hampshireha.co.uk
Howard— Gu18/Bu18 & GU16/BU16	Adultindoorcordinator@southcentral.hockey

Adult Leagues Update

The Adult League Management Committee would like to thank all the teams for bearing with the issues of the GMS. It now seems that most reports are now running as they should.

Teams are requested to ensure they update the GMS with the result, then the team sheet and then the match sheet within the stipulated timelines. The match sheet MUST contain the scorers, red/yellow cards, timing of goals is not imperative but possibly useful for your own records. Please remember to SAVE the sheets as this transfers the data onto a master database for the Divisional Secretaries to monitor. Like yourselves we are volunteers and the less time we have to chase teams the better. Please remember that if you are struggling to put a team out let your divisional secretary know AND if you have appointed umpires they need to know as soon as possible so that they can be reallocated if you decide to withdraw from a fixture; however, withdrawing from a fixture does have consequences and we would much prefer to have teams playing hockey.



Key Adult League contacts this season

chair.adultleagues@southcentral.hockey	Richard Wood
Menspremier.adultleagues@southcentral.hockey	Dave Hughes
Womenspremier.adultleagues@southcentral.hockey	Caroline Hitchcock
Mensnorth.adultleagues@southcentral.hockey	Mike Robson
Menssouth.adultleagues@southcentral.hockey	Ian Southgate
Womensnorth.adultleagues@southcentral.hockey	Emma Oneill
Womenssouth.adultleagues@southcentral.hockey	Nicki Smith
Menscherwell.adultleagues@southcentral.hockey	Mike Robson
Womenscherwell.adultleagues@southcentral.hockey	Jo Copsey
Mensthames.adultleagues@southcentral.hockey	Mike Robson
Womensthames.adultleagues@southcentral.hockey	Jo Copsey
Menssolent.adultleagues@southcentral.hockey	Ian Southgate
Womenssolent.adultleagues@southcentral.hockey	Nicki Smith
Mensforest.adultleagues@southcentral.hockey	Ian Southgate
Womensforest.adultleagues@southcentral.hockey	Nicki Smith

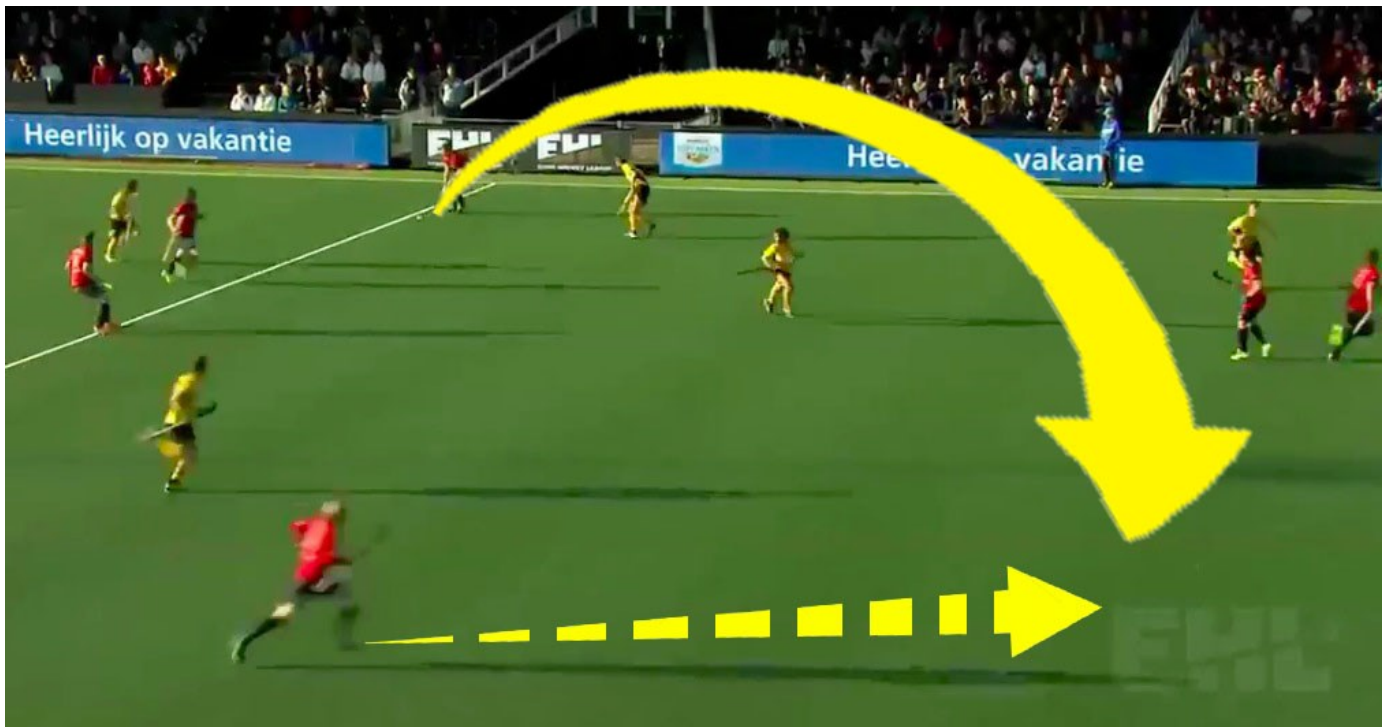


Operations Update

Aerial rule

Following updates by over the summer to guidance on the interpretation of aerals, and given numerous queries regarding this rule from coaches, players and spectators, this video has been put together by the Irish Umpire Association to help your understanding of the rules regarding the aerial ball. England Hockey are responsible for managing umpiring in competitions, and South Central Officiators ensure these rule are fairly delivered. The first step on the ladder of understanding is completing the England Hockey Online Rules Test: <https://hockeyhub.englishhockey.co.uk/> You would have to have to logon to get the best results.

This it the video link on YouTube <https://www.youtube.com/watch?v=VS68CClbZ3U>



Watch out for more news in the coming months and do please keep and eye on our website by bookmarking it for updates, documents and of course results each week and tables. All available at www.southcentral.hockey