

LICHFIELD

vs WALSALL

3PM | 30.09.2023



LICHFIELD RUFC



@LichfieldRugby



LRUFC
MAIN CLUB
SPONSOR

Downes
&
Daughters
ESTD 1880



WELCOME FROM THE PRESIDENT

A warm welcome to all officials, players and supporters from the teams playing at Cooke Fields today. Enjoy the competition and camaraderie which is special to Rugby Football, both on and off the field. This season we play some teams whom we haven't played against for a while or might even be new opponents – it's always good to renew or extend friendships in the 'Rugby Family'.

Probably the most important person in a game of Rugby is the referee, so whether you/we/I think they may be wrong on occasions – they aren't. They are always right and you cannot change the decision. Please encourage the players, but do not abuse the referee in any 'shape or form'!

In a World Cup season in particular I hope more people get their boots on and enjoy a game or two. We really need more adult men participating. However, the Ladies partnership with Leicester Tigers has to date been pretty successful in boosting their playing numbers – long may this continue. And, if only 'rugby for all' in schools could become a development strategy to ensure others, who don't access our brilliant Mini-Junior section, try the skills and game of Rugby Football (which is now 200 years old)!

Thank you to those who will travel around the Midlands to support any of our teams, and to those who frequent the pre-match meals and create a real 'buzz' in the clubhouse. Thank you to all members of our Executive Committee and volunteers for the hours and hours spent on Lichfield Rugby Club matters/issues – without you a club cannot function successfully.

And finally, we proudly head towards commemorating our 150th year in 2024. On the field we hope for success in a big season. Off the field, I hope locals and those who have played or volunteered for the club at any time in our past will attend (with other friends), either the Sporting Luncheon on June 15th and/or The Summer Ball on June 29th in 2024. We have much to celebrate over the years with so many great times to share/cherish.

C'mon Lich.

See you in the Bar.

Barry Broad – President @ LRUFC 2023/24

KEY CONTACTS

President – Barry Broad: president@lichfieldrugby.co.uk, 07866 482 539

Chairman – Paul Massey: chairman@lichfieldrugby.co.uk, 07764 157 889

Director of Rugby – Dan Hemingway: dor@lichfieldrugby.co.uk, 07894 866 548

Commercial & Sponsorship – Dorian Tranter: commercial@lichfieldrugby.co.uk, 07701 308 661

Facilities – Dan Bourne: bookings@lichfieldrugby.co.uk, 07967 076 797

Media & Communications: Stuart Perry: media@lichfieldrugby.co.uk

Mini Rugby Chairman – Luke Trueman: miniuru@lichfieldrugby.co.uk, 07841 126 834

Junior Rugby Chairman – Dave Clark: juniorrugby@lichfieldrugby.co.uk, 07810 206 207

Women's Rugby – Molly Sanghera: womenandgirlsrugby@lichfieldrugby.co.uk, 07709 411 455

Hon. Treasurer – Iain Eadie: treasurer@lichfieldrugby.co.uk, 07916 139 803

Catering: Nineteen: nineteen@lichfieldrugby.co.uk

A FEW WORDS FROM THE CHAIRMAN



Welcome to Cooke Fields – the home of Lichfield Rugby. I really hope you enjoy the game and get to see some exciting and entertaining rugby.

As we start another season, with all the different excitement and expectations about what's in store across our many and various playing sections, I'd also like to share a few thoughts about what makes the club tick off the pitch too.

On the playing side the Men's First XV find themselves in a league containing many different teams as compared to the past few years. So even more difficult than usual to confidently predict outcomes, but either way, lots of new experiences to enjoy. Mens 2s and 3s will really be hoping for more regular and consistent rugby – although the problem with dwindling playing numbers seems to be everywhere. The Ladies will be hoping to bounce back from the disappointment of both sides missing out on promotion so narrowly (and even unfairly) and to further build on the partnership with Leicester Tigers to get us moving upwards again. Our MJ sections continue to go from strength to strength and provide a brilliant pipeline of talent for the senior teams.

Off the field, a very brief summary is that the Club is in a pretty good place. There's been a lot happening during the summer and I really hope that you can see the fruits of the many and various labours that our volunteers have put in – to make the clubhouse and grounds even more enjoyable places to be. Whilst we obviously strive to provide the best experience for our players – through our coaching resources and playing facilities, we also continuously strive to improve the social environment for players, members and visitors alike. The role for myself and the others involved in the management of the club is to provide these facilities and an environment to both attract and support the players and coaches, but also provide an asset to the local community that many other people can enjoy. We are fiercely proud to be an amateur club that is here for the whole community, so differentiating ourselves purely by the playing and social facilities we can offer is the only way to go.

Whilst much of the work to maintain and enhance the place is planned and executed by volunteers, we do still have to pay skilled contractors for the time and materials required to carry out a lot of the improvement work. The costs for this together with the general upkeep and running of the club are all growing significantly. So, how do we fund all this?

Our revenue comes from three distinct (but roughly equal) sources – membership fees, sponsorship and bar takings. The membership fees cover only about one third of the money we need to operate and flourish, and whilst we're forever thankful to our sponsors who support us so generously, anything you, our members, can also do to support social events, spend money at the bar or in the café (or help to find new sponsors), is not only very gratefully received, but essential for us to survive, let alone flourish.

So, in conclusion, many thanks to those of you who already help us to do all this, but there's always room for more. See you at the bar!

Paul Massey – Club Chairman 2023-24

REGIONAL 2

SEPTEMBER | 23

- Saturday 2 | Matlock v Lichfield (A)
- Saturday 9 | Sutton Coldfield v Lichfield (A)
- Saturday 16 | Lichfield v Tamworth (H)
- Saturday 23 | Mellish v Lichfield (A)
- Saturday 30 | Lichfield v Walsall (H)

OCTOBER | 23

- Saturday 14 | Wolverhampton v Lichfield (A)
- Saturday 21 | Lichfield v Newark (H)

NOVEMBER | 23

- Saturday 4 | Long Eaton v Lichfield (A)
- Saturday 11 | Lichfield v Melbourne (H)
- Saturday 18 | Paviers v Lichfield (A)

DECEMBER | 23

- Saturday 2 | Lichfield v West Bridgford (H)
- Saturday 9 | Lichfield v Sutton Coldfield (H)
- Saturday 16 | Tamworth v Lichfield (A)

MIDLANDS (NORTH)

JANUARY | 24

Saturday 6	Lichfield v Mellish (H)
Saturday 13	Walsall v Lichfield (A)
Saturday 27	Lichfield v Wolverhampton (H)

LRUFC
LRUFC
LRUFC
LRUFC
LRUFC

FEBRUARY | 24

Saturday 3	Newark v Lichfield (A)
Saturday 17	Lichfield v Long Eaton (H)

MARCH | 24

Saturday 2	Melbourne v Lichfield (A)
Saturday 16	Lichfield v Paviers (H)
Saturday 23	West Bridgford v Lichfield (A)

APRIL | 24

Saturday 6	Lichfield v Matlock (H)
------------	-------------------------

Correct as of 10th September 2023



Lloyd Morgan Group
Transport Compliance Solutions

Brickability



OUR RUGBY
OUR CLUB
OUR WAY



Cooke Fields, Lichfield, Staffordshire WS14 9JE



MATCH PREVIEW

As one member highlighted recently, we play nearly a quarter of our league games in the opening month, so the need to start the season well is obviously important. To date, as the table indicates, we have started with four straight victories, missing out on one try bonus point in week 1, and our opponents, Walsall, have collected four, but lost 31-26 at Melbourne in round 1, having played a lot of the game with 14. So far so good for both camps then. Today smells like a very competitive game, especially as it is doubling up as a Staffordshire cup opening round match with the winners going into the semi final with Stoke/Tamworth, Burton (bye) and Leek (bye).

After the incredibly successful Ladies' day event 2 weeks ago, it's the turn of the Vice Presidents to take centre stage today – it probably will be a touch quieter with less alcohol consumed. It's also an opportunity to welcome Walsall back to Cooke Fields after a noticeable time gap for league fixtures.

There are posters in the club house regarding the changes to the tackle height in community rugby, as well as in this programme, so please study this as it will give everyone an idea of what is acceptable to referees and also note that the World cup games/players are playing to less stringent laws. For the first couple of weeks, there were few penalties, but the number has increased in the past fortnight. Is this the players, or the referees changing stance ?

Reviewing the last two games, Tamworth gave a gutsy display despite conceding 50 plus points, as we started to show some of the collective skills we would expect from this 1st XV group. However, last week's game was a disappointment, even scoring seven tries and a total of 45 points, with the match becoming a scrappy affair in the second period, in particular. As it was against Tamworth, today's game is 2nd versus 3rd and it is likely that both sides will draw out the best from one another. There is no league game next week and we restart at Wolverhampton in a fortnight. Our next HOME game is on 21 October against Newark, both at 3pm.

The men's 2 XV are at Dudley Kingswinford for a league game after a thumping against Bournville last week and we are hoping to get the 3s back on the road with a league match against Tamworth. In an effort to keep this league viable, the majority of the sides are very close to home. Let's see how it pans out.

Last Sunday, the colts won their 1st round national colts cup game 18-14 at Stafford, the next round is on 8 October and they face the same opponents

tomorrow in a league game – home at 2pm.

The women’s sides are benefiting from the coaching of Fraser Goatcher and Kai Lucas-Dumolo, both of whom played men’s 1st XV rugby last season for us. Both senior sides have won their opening two league games comfortably, playing at national tier 3 and 5, and last week neither side conceded a point. Tomorrow, they host Chester Devas in the national cup competition (2:30) and next week the Red team (1s) are at home to Shelford at 2.15pm, whilst the Green team visit Lutterworth. The junior girls teams are also playing games, which is positive news on the development side, and the boys’ U13s through to U16s are also playing regularly.

The club remains busy socially and here’s some advance notice of Bonfire Night on 3 November, Past Players’ Day on 11 November and the Christmas lunch on 9 December. In 2024, we are celebrating our 150th anniversary and the Sporting Luncheon, which will be very special, is set for 15 June. Our new catering partners, NINETEEN, will be much in evidence at all these events as well as every Saturday and Sunday in particular. Their food is good and different.

#	Team	P	W	D	L	PF	PA	+/-	TB	LB	Pts	Adj
1	Long Eaton	4	4	0	0	153	62	91	3	0	20	
2	Lichfield	4	4	0	0	159	66	93	3	0	19	
3	Walsall	4	3	0	1	134	87	47	3	1	16	
4	Tamworth	4	3	0	1	117	126	-9	2	0	14	
5	Newark	4	2	0	2	149	99	50	3	2	13	
6	West Bridgford	4	2	0	2	124	117	7	3	1	12	
7	Melbourne	3	2	0	1	82	99	-17	2	0	10	
8	Paviors	4	2	0	2	114	134	-20	2	0	10	
9	Matlock	4	1	0	3	90	122	-32	2	1	7	
10	Wolverhampton	3	0	0	3	81	147	-66	1	2	3	
11	Mellish	4	0	0	4	86	153	-67	1	2	3	
12	Sutton Coldfield	4	0	0	4	57	134	-77	1	1	-3	-5



COACH'S CORNER

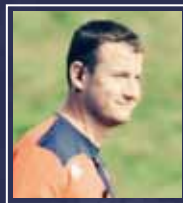
DAN HEMINGWAY



**DAN
HEMINGWAY**



**HUW
MARSDEN**



**DAVE
LOTE**

Welcome all to Cooke Fields for our second home game of the season. With five consecutive games to start the season, and three on the road, this opening block has been a challenging start to the season for the boys. Whilst on the league table we have equipped ourselves well, and have notched up 4 wins and 3 bonus points, it is fair to say that we haven't yet hit our straps. The positive here is that we have shown some grit and toughness, with a will to 'win ugly', and have enough about us to show quality moments to get the job done. There is also a real hunger in the group to keep improving, to get better each week and push ourselves to the level of rugby we know we are capable of playing.

This will need to be the case today, with a tough challenge against a good Walsall side. For the second consecutive home game, it is 2nd v 3rd in the league, with the added incentive of a Staffs Cup double header.

Across the last couple of weeks there have been a few notable milestones. Josh Butler and Harvey Moss both made their 1st team debuts last weekend away at Mellish, both products of the Lichfield M&J section, and Dylan Whittington started his first game for the club last week as well, having joined the club in the summer. Well done to those boys.

Finally, welcome to the team, coaches and supporters from Walsall RFC. It promises to be a great contest today.

Thank you all for your support.

Hemo

REGIONAL 2 MIDLANDS NORTH

SATURDAY 30TH SEPTEMBER | 3PM

LICHFIELD	V	WALSALL
Jack Hurst	1	Tarik Tin
Danny Griffin	2	Neil Holden
Rory Davis	3	Simon Weaver
Cal Turner	4	Isaac Marlow
Matt Cowley	5	Callum Hoy
Kieran Reynolds	6	Corbon Clarke-Selby
Charlie Milner	7	James Tamilio
Rich Burton	8	George Perkins
Sam Benson	9	Dean Ainger
Josh Butler	10	Mitch Carless
David Mott	11	Dan Carpenter
Adam Spinner	12	Robert Angell
Kieran Higgins	13	Quade Boal
Kai Lucas-Dumolo	14	Hansen Christoffersen
Tom Day	15	Toby Smith
Harvey Moss	16	Ben Cooper
Aled John	17	Matt James
Paul Maxwell-Keys	18	Adam Tamilio

The referee today is Leigh French, from the Staffordshire Refereeing Society.
We wish him an enjoyable time at Lichfield RUFC.

TRY THE PLOUGH

—AT SHENSTONE—

PROUD TO SPONSOR LRFC 'MAN OF THE MATCH'

Follow us on



www.theploughatshenstone.co.uk Tel: 01543 481800



DISCIPLINE IN RUGBY

On and off the pitch

TEAMWORK
RESPECT
ENJOYMENT
DISCIPLINE
SPORTSMANSHIP

POLITE NOTICE

One of the greatest things about our wonderful game, is the respect given by Players throughout a match to the Referees and Touch Judges. These core values, engrained in us as a player from a young age are what separates us widely from many other Team Sports.

However, the responsibility for that discipline and respect does not lie solely with the players. Everyone on the touchline – including All supporters, parents, coaching staff and replacements, are equally responsible for maintaining these core values in the modern game.

Lichfield Rugby Union Football Club has always had a great reputation and an exemplary disciplinary record within the local (and wider) Rugby community. We should be (and are) enormously proud of that, but standards can slip so easily.

Verbal abuse and disrespect aimed towards officials and/or the visiting team and their supporters will never be deemed acceptable behaviour at our Club and there will be a zero tolerance approach adopted for the 2023–24 season – with formal measures implemented against persons found not to observe and respect these principles.

This equally applies when we as a Club, travel to other clubs. We must apply the same respect both Home and Away – wherever and whenever we represent Lichfield Rugby Club.

We trust all players, coaching staff and supporters who visit our club will also agree, adopt, and abide by these core principles.

RESPECT THE REFEREE

The Executive Committee of Lichfield Rugby Union Football Club respectfully remind all players, club officials, parents and supporters to please show their respect to the Referee and Officials at all times.

Respect for the Rugby Referee is the uppermost traditional value, embodying the spirit of our wonderful game. It is all the more important, that it is this proud tradition, that separates us from many other team sports, is adhered to at Senior and Junior grass roots level both on and off the pitch.

Since our Referees have to make all their decisions on the spot without the aid of TMO replays or other technology, we politely ask for your patience.

In particular for this season, we expect that the new law changes around the tackle height, will be very likely to cause a certain amount of confusion, ambiguity and ultimately frustration both on the pitch and on the sidelines. Any abuse aimed at the match officials is totally unacceptable.

Rule 1. The Referee is always right.

Rule 2. The Referee's decision is final.

Rule 3. The Referee is a volunteer.

Rule 4. The Referee is human.

Rule 5. This is not Twickenham (or Soccer).

Rule 6. If you believe the Referee's decision to be wrong refer to Rule 1 and or 2.

We trust you will join us in embracing the highly valued principles of respect and fairplay. We rely on unconditionally on Referees who, like players, turn up week in week out and without them we don't play - please don't be the reason why a Referee doesn't show.

Thank you and enjoy the Game
LRUFC Exec Committee

TEAMWORK, RESPECT, ENJOYMENT, DISCIPLINE, SPORTSMANSHIP



SAVE THE DATE

The Lichfield Rugby Club Summer Ball is back,
bigger and better than ever before!



CELEBRATING 150 YEARS OF LRUFC

JUNE | 29 | 2024



Sign up to hear more, and for the chance to
WIN 2 FREE TICKETS

M 1XV

Oct FIXTURES

SAT. 14TH OCTOBER | KO 3:00 PM
W'hampton v Lichfield (A)

SAT. 21ST OCTOBER | KO 3:00 PM
Lichfield v Newark (H)

M 2XV

Oct FIXTURES

SAT. 28TH OCTOBER | KO 3:00 PM
Stafford 2 v Lichfield 2 (A)

M 3XV

Oct FIXTURES

SAT. 14TH OCTOBER | KO 3:00 PM
Lichfield 3 v Barton 2 (H)

SAT. 21ST OCTOBER | KO 3:00 PM
Lichfield 3 v Walsall 3 (H)

SAT. 28TH OCTOBER | KO 3:00 PM
Rugeley 2 v Lichfield 3 (A)

L 1XV

Oct FIXTURES

SUN. 1ST OCTOBER | KO 2:30 PM
Lichfield v Chester (H) CUP

SUN. 8TH OCTOBER | KO 2:30 PM
Lichfield v Shelford (H)

L 2XV

Oct FIXTURES

SUN. 8TH OCTOBER | KO 2:30 PM
Lutterworth v Lichfield (A)

SUN. 22ND OCTOBER | KO 2:30 PM
Lichfield v Silhillians (H)

SENIOR FIXTURES | OCTOBER 2023

 Lichfield Rugby Union

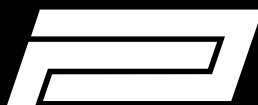
 Brickability

 Downes & Daughters

 OUR RUGBY
OUR CLUB
OUR WAY

   @lichfieldrugby

Lichfield Rugby Union Football Club, Cooke Fields, Lichfield, Staffordshire WS14 9JE



PRINTABLE PROMOTIONS
TEAMWEAR | WORKWEAR | MERCHANDISE

PROUD TO SUPPORT LICHFIELD RUFC



Established in 1993, Printable Promotions are one of the UK's leading suppliers of Teamwear, Workwear & Merchandise. Working with a number of well-loved brands, we are able to tailor the perfect solution for your club, company or event.



Visit the
LRUFC
online
shop



@ppteamwear

sales@printablepromotions.co.uk





LICHFIELD RUGBY CLUB

SPONSORSHIP PACKAGES 23-24

Lichfield Rugby Union Football Club – providing the facilities and opportunities for competitive and entertaining rugby to the local community since 1874.

Lichfield Rugby Club would like to give local businesses and individuals the opportunity to share in the experience and exposure of a thriving local club, which currently fields the following teams:

Men's:

- 1st Team – Regional 2 Midlands
- 2nd Team – Midlands Reserve League 1
- 3rd Team – Staffordshire Merit League 1

Ladies:

- 1st Team (Red Team) – Ladies Championship Div 2
- 2nd Team (Green Team) – NC2 Midlands West

Mini – Juniors:

- Under 18's (Colts)
- All Boys and Girls age groups from Under 7's to Under 16's
- We also have an Under 6's section called 'Rugger Rats'

**FOR MORE INFO, PLEASE
SCAN THE QR CODE OR
CONTACT:**

Dorian Tranter
commercial@
lichfieldrugby.co.uk



Across these different sections we have up to 20 teams taking to the field to represent Lichfield Rugby Club each weekend throughout the season.

We are a 'Community Amateur Sports Club' which means that all revenue raised via memberships, donations and sponsorship is invested back into the club to fund the playing costs of all teams and our facilities. None of the players are paid to play at Lichfield, and our playing costs are covered by membership fees – so all sponsorship received helps directly to maintain and improve our facilities.

We believe Lichfield Rugby Club presents a number of very good opportunities for you to promote and expand your business via our players, our members and the spectators who attend our games and/or read our numerous forms of regular communication.

Please scan the QR code to see the sponsorship packages that are available for the 2023-24 season.

We really hope that you can find something to match your needs.

Paul Massey (Chairman)

Dorian Tranter (Commercial Director)



Southall Harries
Commercial Insurance Brokers

Your insurance in our safe hands

If you are looking for an innovative insurance broker that better understands the risks and complexities that confront your business and can add real value, get in touch today:

0121 446 2990

info@southallharries.co.uk

www.southallharries.co.uk

1ST XV OPPOSITION ADDRESSES

LONG EATON RUGBY CLUB

WEST PARK CLUBHOUSE
WEST PARK
WILSTHORPE ROAD
LONG EATON
UNITED KINGDOM
DERBYSHIRE
NG10 4AA
TEL: 07855015416

MELBOURNE RFC

COCKSHUT LANE
MELBOURNE
DERBYSHIRE
DE73 8DG
TEL 07850 028211

MELLISH RFC

WAR MEMORIAL GROUND
MAPPERLEY PLAINS NOTTINGHAM
NOTTINGHAMSHIRE
NG3 5RX
TEL: 0115 9266653

NEWARK RUFC

THE RUGBY GROUND, KELHAM ROAD
NEWARK-ON-TRENT, NOTTS NG24 1WN
TEL: 01636 702355

PAVIOURS RFC

THE RON ROSSIN GROUND
BURNTSTUMP HILL
BURNTSTUMP HILL
ARNOLD
UNITED KINGDOM
NOTTINGHAMSHIRE
NG5 8PQ
TEL: 07496 962584

SUTTON COLDFIELD RFC

ROGER SMOLDON GROUND
160 WALMLEY ROAD
SUTTON COLDFIELD
WEST MIDLANDS
B76 2QA
TEL: 01213515323

TAMWORTH RFC

WIGGINTON LODGE
WIGGINTON PARK
TAMWORTH
STAFFORDSHIRE
B79 8ED
TEL: 0182768794

WALSALL RFC

DELVES ROAD
WALSALL
ENGLAND
WEST MIDLANDS
WS1 3JY
TEL: 01922 626618

WEST BRIDGFORD RFC

THE MEMORIAL GROUND
STAMFORD ROAD
WEST BRIDGFORD
NOTTINGHAM
NG2 6GF
TEL: 07740291312

WOLVERHAMPTON RUFC

CASTLECROFT
CASTLECROFT ROAD
WOLVERHAMPTON
ENGLAND
WEST MIDLANDS
WV3 8NA
TEL: 01902 763900



LICHFIELD

U7s – U12s

FIXTURES: 2023–2024



SEP 03 TRAINING RESUMES

OCT 01 BURTON – A

OCT 22 SUTTON COLDFIELD – TRI FIXTURE – A

NOV 5 BROMSGROVE (7s/9s/11s – A, 8s/10s/12s – H)

DEC 10 BERKSWELL & BALSALL (7s/9s/11s – A, 8s/10s/12s – H)

DEC 17 CHRISTMAS PARTY

JAN 21 CAMP HILL (7s/9s/11s – A, 8s/10s/12s – H)

FEB 11 BOURNVILLE – A

MAR 03 MINIÕS FESTIVAL(7s–9s)

MAR 17 BARKERS BUTTS – A

APR 07 MINIÕS FESTIVAL(10s–12s)

APR 21 OLD LEAMS – A

**APR 28 SUTTON
COLDFIELD
FESTIVAL**



TonksBrothers
Tree Services

BORSHCH
Appliances & Kitchen Superstore



SHOPPER

Lloyd Morgan Group

Branded Uniforms, Workwear, PPE & Transport Products



Price Match Promise



Express Shipping



No Minimum Order

To Discuss Your Bespoke Workplace Needs,
Please Contact Us On:

T - 01543 897505

E - workwear@lloydmorgangroup.co.uk

www.lmgshopper.co.uk



Brickability

GROUP PLC

LICHFIELD

WINDOWS LTD





get FASTER
Fitness, Assessment, Sports Therapy
& Exercise Rehabilitation

Ian Turner Dip MSI, IIST, REP's, JSRI
Tel : 07753 571287
Email : get_faster1@sky.com

Sports Injury Therapy Including:

Injury Assessment
Acute and Chronic Injuries Treated
Sports Massage
Manipulation
Bio-Mechanical Analysis
Pre and Post Operative Exercise Rehabilitation
GP Referral
Personal Training
Sport Specific Exercise Prescription
Weight Management
Nutritional Guidance



Ian Turner is a Health and Fitness Professional with over 25 years experience as an Army Physical Training Corps Instructor and Rehabilitation Specialist. A Sports Therapist with Lichfield RUFC and the England Women's Rugby team. Ian has also worked with other sports men and women in Athletics, Running, Cycling, Hockey, Football, Cricket, Water Skiing and the Britains Strongest Man Circuit

For an assessment, treatment, exercise programme or even a chat about your fitness
Call Ian on 07753 571287

SPORTS INJURY THERAPIST AND PERSONAL TRAINER



Register
of
Exercise
Professionals



**ECOLIFE
FURNITURE**

**REPLACE YOUR
MATTRESS &
RECOVER LIKE A
CHAMPION**

**100% RECYCLABLE MATTRESS MADE FROM
RECYCLED MATERIAL**



30% OFF
CODE: **LICH30**

WWW.ECOLIFEFURNITURE.CO.UK



REQUEST YOUR APPOINTMENT AT WWW.COTONHOUSEFARM.COM



Exclusive use Wedding Barn venue
BASED IN THE BEAUTIFUL LICHFIELD COUNTRYSIDE

Tel: 01543 432429 / 07402 712143 / Email: events@cotonhousefarm.com

www.cotonhousefarm.com

Coton House Farm, Vicarage Lane, Whittington, Lichfield, Staffordshire, WS14 9LQ



Coton House Farm Wedding Venue

BORSHCH

APPLIANCE & KITCHEN SUPERSTORE

Established in 1982, Borshch is a family run business with 3 stores located in Birmingham, Erdington and Dudley.

In 2019 we opened our 'flagship' store in Erdington bringing our 40 years appliance expertise to kitchen design. With our own 'in house' kitchen designer we offer our customers a wide variety of choice and styles, to cater for all budgets and tastes.

Through our 40 years we have served over 1.5 million customers, sometimes selling to second and third generations of families. Our customers are at the heart of everything we do, we aim to give the best impartial advice to ensure our customers get the appliances that meet all their requirements. We have a 4.9 star rating on Trustpilot from over 500 reviews, this is a testament to our commitment to deliver exceptional customer service.

So why not browse our website or pop into one of our stores to see our fantastic range of appliances and experience the Borshch service for yourselves.



Washing Machines

from £180



Tumble Dryers

from £170



Dishwashers

from £150



Gas & Electric Cookers

from £150



American Style Fridge Freezers

from £495



Fridge Freezers

from £150



Fridges & Freezers

from £65



Range Cookers

from £450

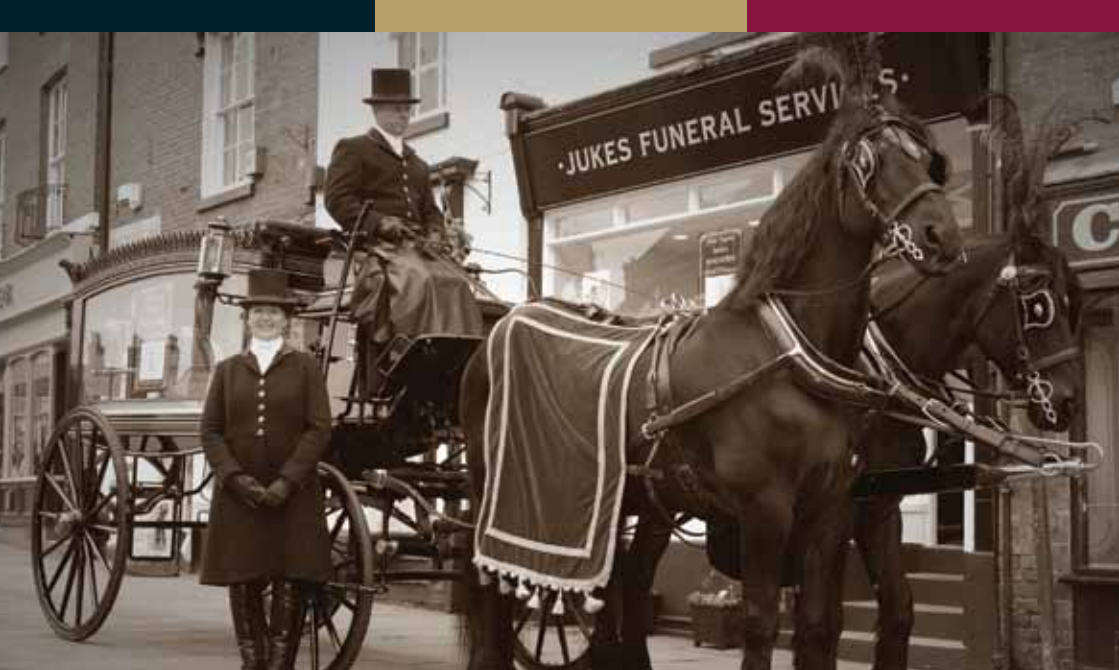
1000'S OF APPLIANCES IN STOCK - AMAZING DEALS FROM TOP NAME BRANDS



visit
borshch.co.uk

euronics





OUR FAMILY, CARING FOR YOUR FAMILY

**AN INDEPENDENT
FAMILY COMPANY**

- WITH YOU EVERYSTEP OF THE WAY
- TRUSTED TO CARE, HERE TO HELP
- A TRULY PERSONAL SERVICE
- BURIAL & CREMATION SERVICES
- HORSE DRAWN FUNERALS
- PRE PAID FUNERAL PLANS
- ALTERNATIVE & TRADITIONAL FUNERAL SERVICES
- FLORISTRY
- CHAPELS OF REST
- 24 HOUR SERVICE
- RELIGIOUS & NON RELIGIOUS SERVICES



Tel: 01543 522300

117-119 High Street
Brownhills WS8 6HL

www.jukesandastonfuneralservices.com



Tel: 01543 415050

26 Tamworth Street
Lichfield WS13 6JJ

www.jukesfuneralservices.com



Tel: 01827 58590

231b Glascote Road
Tamworth B77 2AZ

www.jukesdobsonfuneralservices.com

Downes & Daughters

ESTATE AGENCY



The Downes family have been building and selling homes throughout Staffordshire for generations. Having grown up in the area and now living and raising our own young family in Whittington, our local knowledge is based on real, firsthand experience.

We are a family business with family values and strive to deliver an unrivalled level of customer service. We aim to treat you how we would like to be treated ourselves.

Our shop is attached to the family home and we pride ourselves on its warm, welcoming feel. We wanted to create a place where vendors and buyers alike can relax in an unhurried environment to properly discuss their property requirements. We believe in conducting business in a friendly manner and will always approach even the most difficult of transactions with a sense of humour and understanding you simply would not receive from a national chain.

We are totally independent and offer clear, concise and honest advice on all aspects of property sales.

Please feel free to call in or get in touch to find out more.

t: 01543 432099 w: www.downesanddaughters.co.uk



5 Main Street, Whittington, Staffs WS14 9JU