

**FAW SAFER RETURN TO PLAY PROTOCOLS  
PHASE 3  
STAGES 1 - 4 (EFFECTIVE FROM 5/10/20)**

**SENIOR, YOUTH, JUNIOR & SMALL-SIDED  
FOOTBALL, HUDDLE, FUN FOOTBALL AND OTHER  
FORMATS**



# GLOSSARY OF TERMS

- Phase 3 = Our next phase of return to football
- Senior = Tier 2 of the Mens and Womens pyramid and below
- Intra-club training matches = training matches that can take place with players participating from within the same club
- Inter-club matches = matches that can take place between 2 different clubs
- COVID-19 Compliance Officer = Role appointed at each club to lead on COVID-19 compliance across the club
- COVID-19 Operational Lead = Role that clubs can create to devolve responsibility of certain COVID-19 responsibilities i.e. collecting registers across a club's network of teams



# INTRODUCTION

- The primary aim of this protocol is to support clubs affiliated to the FAW and/or an Area Association of the FAW to protect the health & safety of their players, coaches, all essential personnel and volunteers in a safer return to training and match-play, at the appropriate age groups
- This protocol will be subject to the latest Public Health Wales and Welsh Government policy and guidelines related to COVID-19 – given the changing nature of the guidance, clubs should keep up to date with COVID-19 updates issued by Welsh Government which is available [here](#)
- This protocol will follow all Welsh Government updates on '[Sport, recreation and leisure: guidance for a phased return](#)' and '[Guidance for a Phased Return of Outdoor Organised Activity](#)'
- This protocol will be utilised in line with all other FAW policy documents including Safeguarding
- The FAW, following WG guidance, identified the return to training date for all clubs to be from Monday 13<sup>th</sup> July 2020
- We are now in a position to provide you with information on football returning at phase 3 which will be a staged return under the current 30-person limit with progress through the different stages' dependent on a number of internal and external factors
- Clubs will need to adhere to specific protocols and complete necessary documentation in order to continue to train and return to match-play under phase 3 revised protocols from the 21<sup>st</sup> September 2020



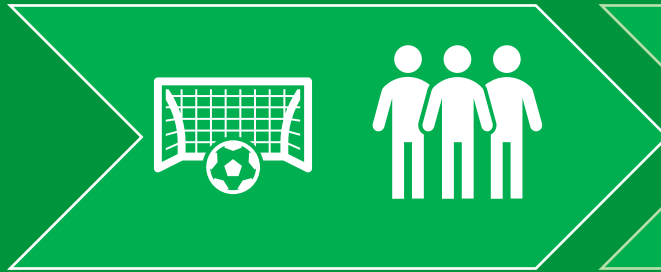
# CONTENT

|   |         |
|---|---------|
| • Phased Return to Football                           | Page 5  |
| • Summary   | Page 7  |
| • Influencing factors to progress at phase 3          | Page 8  |
| • Club Responsibilities                               | Page 9  |
| • Club COVID-19 Officers                              | Page 10 |
| • Club COVID-19 Checklist                             | Page 11 |
| • COVID-19 Risk Assessment                            | Page 12 |
| • Preparing training venues, facilities and equipment | Page 13 |
| • Before you Train or Play                            | Page 14 |
| • Training groups   Numbers                           | Page 16 |
| • Training and playing area                           | Page 17 |
| • Training sessions and matches                       | Page 19 |
| • Intra-club training matches                         | Page 20 |
| • Inter-club friendly matches                         | Page 23 |
| • Coach responsibilities                              | Page 30 |
| • Player & Parent responsibilities                    | Page 31 |
| • Mini & junior football                              | Page 32 |
| • Next steps  | Page 34 |



# PHASED RETURN TO FOOTBALL

## PHASE 1

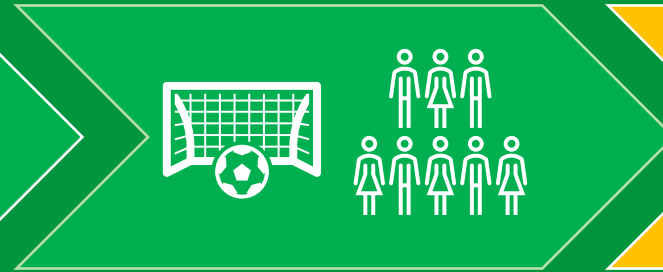


**SMALL GROUP TRAINING  
(GROUPS OF 6)**

**FOCUS ON IMPROVING FITNESS  
AND SKILLS**

**CLUBS NEED TO PREPARE AND  
COMPLETE NECESSARY  
DOCUMENTATION**

## PHASE 2

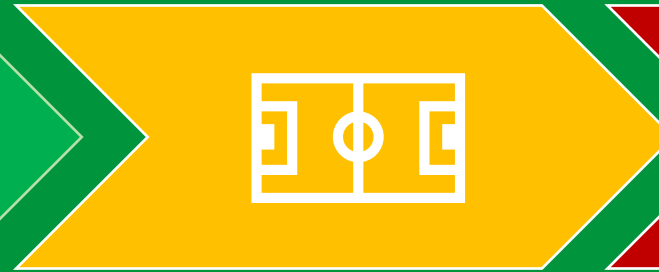


**LARGER GROUP TRAINING  
(GROUPS TBC)**

**CONTACT TRAINING TO BE  
INTRODUCED**

**CLUBS TO UPDATE MEMBERS  
AND REVIEW AMENDED  
DOCUMENTATION**

## PHASE 3

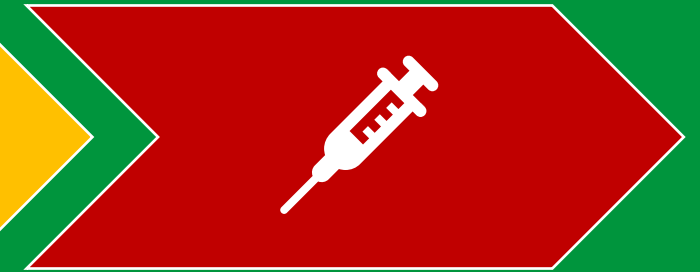


**STAGED RE-INTRODUCTION  
OF MATCHPLAY ACROSS AGE  
GROUPS**

**CONDITIONED INTRA-CLUB  
AND INTER-CLUB MATCHES  
AND COMPETITION RETURNS**

**LIKELY TO BE IN PHASE 3  
FOR SOME TIME**

## PHASE 4



**UNRESTRICTED FOOTBALL  
PROVISION**



## STAGED RETURN OF FOOTBALL AT PHASE 3 – OPERATING WITHIN 30 PERSON LIMIT

|   | STAGE 1  | STAGE 2   | STAGE 3  | STAGE 4  | STAGE 5   | STAGE 6  |
|---|--|---|--|--|---|--|
| <b>FORMATS</b>  | W/C 21/9/20  | W/C 28/9/20   | W/C 5/10/20  | W/C 12/10/20 <i>subject to change</i>  | W/C 19/10/20 <i>subject to change</i>   | TBC  |
| <b>YOUTH, SENIOR, VETERANS &amp; WALKING FOOTBALL</b> | Outdoor contact training for up to 2 groups of 15 players and coaches (total 30) |   | Intra-club training matches permitted within 30 person limit |  | <b>Friendly matches permitted against other teams</b> <ul style="list-style-type: none"> <li>Games can take place against fellow league or within their LA teams only</li> <li>No spectators, max. 1 coach and 1<sup>st</sup> aider per team</li> <li>Limited number of substitutes and game length</li> <li><b>3 WEEK PERIOD OF FRIENDLY MATCHES</b></li> <li>Local lockdown restrictions may impact who clubs are able to play</li> </ul> | <b>League and FAW Academy competitions could resume</b> <ul style="list-style-type: none"> <li>Season structure will need to be flexible</li> <li>Amended formats for u13 – u16 age groups (11v11)</li> <li>No spectators, max. 1 coach and 1<sup>st</sup> aider per team</li> </ul> |
| <b>U12 – U16 AGE GROUPS INC. FAW ACADEMIES</b>        |  |   | Intra-club training matches permitted within 30 person limit | <b>Friendly matches permitted against other teams</b> <ul style="list-style-type: none"> <li>Games can take place against fellow league teams or within their LA only</li> <li>No spectators, max. 1 coach and 1<sup>st</sup> aider per team</li> <li>Amended formats, limited number of substitutes and game length</li> <li><b>3 WEEK PERIOD OF FRIENDLY MATCHES</b></li> <li>Local lockdown restrictions may impact who clubs are able to play</li> </ul> |   |  |
| <b>U6 – U11 AGE GROUPS INC. FAW ACADEMIES</b>         | Intra-club training matches permitted with 30 players and coaches                | <b>Friendly matches permitted against other teams</b> <ul style="list-style-type: none"> <li>Games can take place against fellow league teams or within their LA only</li> <li>No spectators, max. 1 coach and 1<sup>st</sup> aider per team</li> <li><b>3 WEEK PERIOD OF FRIENDLY MATCHES</b></li> <li>Local lockdown restrictions may impact who clubs are able to play</li> <li>Use of central venues for multiple fixtures should be limited</li> </ul> |  |  | <b>League and FAW Academy competitions could resume</b> <ul style="list-style-type: none"> <li>Season structure will need to be flexible No spectators, max. 1 coach and 1<sup>st</sup> aider per team</li> <li>Small-sided football formats to be implemented</li> </ul>   |  |

# SUMMARY

Please see below a summary of what activity is permitted at Stages 3 & 4 from Monday 5<sup>th</sup> October

| ACTIVITY   | U6 – U11 AGE GROUPS | U12 – U16 AGE GROUPS | YOUTH, SENIOR, VETERANS & WALKING FOOTBALL | HUDDLE & FUN FOOTBALL | PAN-DISABILITY AND IMPAIRMENT SPECIFIC FOOTBALL |
|--|---------------------|----------------------|--|-----------------------|---|
| OUTDOOR CONTACT TRAINING FOR UP TO 2 GROUPS OF 15 PLAYERS & COACHES (TOTAL 30)               | ✓                   | ✓                    | ✓  | ✓                     | ✓   |
| OUTDOOR TRAINING UP TO 30 PLAYERS & COACHES IN 1 GROUP INCLUDING INTRA-CLUB TRAINING MATCHES | ✓                   | ✓                    | ✓  | ✓                     | ✗   |
| OUTDOOR INTER-CLUB FRIENDLY MATCHES (CLUB A VS CLUB B)                                       | ✓                   | ✓*                   | ✗  | N/A                   | ✗   |
| LEAGUE COMPETITIONS  | ✗                   | ✗                    | ✗  | N/A                   | ✗   |
| FESTIVALS & TOURNAMENTS  | ✗                   | ✗                    | ✗  | ✗                     | ✗   |

\* From Monday 12<sup>th</sup> October



# INFLUENCING FACTORS TO PROGRESS AT PHASE 3

## **An increase in the number of people that can gather for outdoor activity**

A further increase in the 30-person limit would be required for us to continue to progress at stage 3. This number is particularly limiting for 11v11 matches and competitions to return. There would need to be an amendment to match-day officials being included within the 30-person limit. Currently, they are included meaning an 11v11 match with 3 substitutes each team, 1 referee and a coach and first aider for each team would exceed the 30-person limit.

## **FAW protocols continue to be followed**

We require a commitment from all players, coaches, officials and parents across our football family to continue to follow our guidelines and limit the spread of the virus. The majority of clubs continue to follow our guidelines; however we are aware of some clubs who aren't. These clubs and teams significantly impact the return of football at all levels.

## **Local lockdowns and further restrictions**

Local lockdowns and further restrictions imposed on specific activities, settings and gatherings may impact the return of football in certain geographical areas or for certain groups. We ask all clubs to stay up to date with the latest Government guidelines available [here](#) and act in accordance with them for your local area.

## **League preparation and education**

Leagues require appropriate time to prepare how their competitions will return under COVID-19 protocols.





# CLUB RESPONSIBILITIES

- Club management committees should meet to review the FAW Safer Return to Play protocol ahead of any training or match-play under phase 3 protocols
- All clubs must have at least ONE Covid-19 Officer in place to train or play under phase 3 protocols
- Clubs must continue to have COVID-19 Officers and Operational Leads in place – clubs who are able to play inter-club matches will need to submit a new FAW club checklist before this can take place
- Clubs must ensure, through their COVID-19 Officers and Operational Leads, that all coaches, parents and players are fully aware of their responsibilities and updated return to play protocols
- Clubs should complete a NEW COVID-19 Risk Assessment ahead of training and match-play under phase 3 protocols – this does not need to be shared with, or approved by FAW
- Clubs should keep a register for all attendees at training sessions and what groups they were participating in to support NHS Wales Test, Trace and Protect Service (TTPS)
  - ONLY names and a contact number should be collected as part of register
- Clubs may be asked to provide this information to TTPS – this information is exempt from GDPR
- Clubs should ensure players and coaches are registered on COMET
- Clubs should familiarise themselves with supporting resources provided by Bluefin Insurance

**IF CLUBS DO NOT ADHERE TO FAW PROTOCOLS THEN THEY RISK INVALIDATING THEIR PUBLIC LIABILITY INSURANCE AS AN AFFILIATED CLUB**



# CLUB COVID-19 COMPLIANCE OFFICERS

The main functions of the Club COVID-19 Officer will be to –

- Operate as the single point of contact for the club in relation to communication with and from the FAW, and for opposition clubs before, during and after matches are played
- Implement and manage Phase 3 training or match-play protocols across the club
- Develop a network of COVID-19 Operational Leads for teams or sections of the club i.e. seniors, minis, juniors, girls and disability etc. who would support in implementing FAW Phase 3 protocols
- Communicate and liaise with COVID-19 Operational Leads, club officials and coaches on Phase 3 protocols and procedures that need to be adopted
- Disseminate relevant COVID-19 related information to players and parents within the club
- Coordinate the recording of attendees at all training sessions and matches, for appropriate age groups, for contact tracing purposes
- Update COVID-19 Officers from relevant opposition clubs with details of any positive COVID-19 tests from within the club to relevant opposition clubs over the past 14 days

**A Club COVID-19 Compliance Officer who is appointed to clubs with mini and junior players is required to have a valid DBS certificate.**



# COVID-19 CLUB CHECKLIST

- Clubs will need to complete a NEW COVID-19 club checklist prior to returning to playing inter-club matches
- The checklist should be completed by the club's COVID-19 Compliance Officer and will confirm your club has
  - Received and reviewed the FAWs Phase 3 protocols
  - Completed a COVID-19 Risk Assessment related to Phase 3 protocols
  - Shared FAW Phase 3 protocols with players, parents, coaches and facility providers
- A NEW club checklist is available to be completed [here](#)



# COVID-19 RISK ASSESSMENT

- A NEW COVID-19 risk assessment must be carried out by all clubs in advance of any resumption of training, match-play and/or facility reopening under phase 3 protocols
- If clubs are accessing private facilities this risk assessment must be shared with facility providers and considered alongside providers own risk assessment
- A risk assessment should be completed by the club at each training and fixtures venue its club teams uses
- The risk assessment must be reviewed regularly and kept up to date at all time
- The risk assessment must be in line with Welsh Government's 'Sport, recreation and leisure: guidance for a phased return'
- The FAW has developed a risk assessment guide and template for clubs and is available here

A club risk assessment does not need to be shared with, or approved by FAW



# TRAINING OR PLAYING VENUES, FACILITIES & EQUIPMENT

- If you own or manage your facility, read through and follow Welsh Government's '[Sport, recreation and leisure: guidance for a phased return](#)' and other relevant guidelines
- Clubs and participants should be aware that the easing of restrictions does not mean that all facilities will open immediately - owners and operators will require time to consider all the implications of opening facilities, so please be patient.
- If you are hiring a facility, ensure you are aware of and follow all procedures that the owner / operator has put in place to ensure user safety.
- If you are using a public space: contact your local authority, please follow all guidelines and be respectful to other users.
- No changing rooms should be used – players should arrive in training or playing kit. Exeptions may be made where safety and safeguarding measures require their use.
- No shower facilities should be used
- Toilet facilities should be accessible for players and coaches
- Toilet facilities should be thoroughly cleaned before the first and after the last training session at the venue
- Toilets capacity should be managed via entry and exit and to allow for the 2m physical distancing to be maintained.
- Hand sanitiser and cleaning products should be available in toilet facilities for use during training sessions
- All training equipment – including goalposts – must be sanitised before and after every training session or fixture
- Clubs should follow [guidelines on cleaning in a non-healthcare setting here](#)
- While players & coaches will be advised to bring their own hand sanitisers, clubs will need to have hand sanitisers in place and observe strict hand hygiene measures



# BEFORE YOU TRAIN OR PLAY

You must stay at home if:

- you have symptoms of COVID-19 (new persistent dry cough, fever, loss of taste or smell)
- you have had a positive test for COVID-19 or onset of symptoms of COVID-19 in the last 10 days. (Individuals who have completed their period of isolation (10 days) and have no remaining symptoms (other than a dry cough or loss of taste or smell which can last for some time) may return to normal activities)
- a member of my household has had symptoms of COVID-19 or has tested positive for COVID-19 in the last 14 days
- you have been contacted by a contact tracer from the Test, Trace and Protect Programme and told to isolate in the last 14 days as a contact of someone with confirmed COVID-19
- you have returned from a country outside of the UK currently on the exempt list - more information on self-isolation is available [here](#)

Prior to training and playing you should:

- Complete a COVID-19 self-assessment questionnaire (COACHES, VOLUNTEERS, OFFICIALS AND PLAYERS AT YOUTH and SENIOR LEVEL ONLY)
- Be temperature tested by your club (ALL PLAYERS, COACHES, VOLUNTEERS AND OFFICIALS)

You must:

- Familiarise yourself with COVID-19 safety protocols at your club
- Ensure your club has up-to-date contact details for you
- If you have additional concerns due to underlying medical conditions – or living with people with underlying



# SELF-ASSESSMENT FOR COVID-19 SYMPTOMS CHECK

1. Have you been tested for COVID-19? Yes / No
2. Have you been or are you currently a contact of a COVID-19 case or a suspected case? Yes / No
3. Have you completed or are you in the process of completing a 14-day period of self-isolation? Yes / No
4. Have you returned from a country abroad on the 'quarantine list' within the past 14 days? Yes / No
5. How are you feeling today? Good / Poorly
6. Do you have a fever or body temperature higher than 37.5 degrees? Yes / No
7. Do you have a cough, throat pain, muscle pain, unusual weakness, short of breath, chest pain, any palpitations (abnormal heart rate), diarrhea or conjunctivitis? Yes / No
8. Do you have a loss of sense of smell or taste? Yes / No
9. Any relevant signs or symptoms of COVID-19 that you think we should be aware of? Yes / No

Please refer to HSE guidelines (<https://www.hse.gov.uk/coronavirus/index.htm>) on how you should proceed if you answer YES or Poorly to the above questions.

This self-assessment should be completed by all coaches, players (YOUTH and SENIOR ONLY), officials and volunteers involved in a training session or fixture. It does not have to be completed as a physical questionnaire with key personnel being asked to self-assess against the above questions.

If you are in any doubt DO NOT attend the training session or fixture without clearance from the club.



# TRAINING GROUPS | NUMBERS

As of Monday 5<sup>th</sup> October 2020 the training numbers are as follows for all age groups and formats:

- 1 group of 30 (ratio of 1 qualified coach : 14 players should be maintained throughout, additional adult coaches/team helpers are required to maintain adult:player ratio )
- Maximum of 30 players and coaches on 1 training or playing area\*
- Clubs must adhere to FAW Safeguarding policies and other associated policies, at all times
- Only essential personnel are permitted access onto the training pitch/area

Essential personnel = Players, Coaches / Team Helper, First aid qualified person, Club COVID-19 Compliance Officer/Operational Lead

\*Training or playing area has been amended for u6 – u16 teams (more information is available on page 17)

- FAW have produced coaching activity resources to support coaches deliver activities that adhere with our guidelines - coaches should follow these coaching guidelines at all times
- Coaching resources are available [here](#) – coaches will need their FAW Courses log in details, once signed in they should click on 'Jump to Coach Cymru'





# TRAINING AND PLAYING AREA

- For u6 – u16 players, the minimum size of the training or playing area must be 45x45m (half a full-size football pitch) if working with 30 players and coaches
- For youth and senior players, the minimum size of the training or playing area must be 90x45m (full-size football pitch) if working with 30 players and coaches. The size of the training or playing area can be amended according to the number of participants e.g. if working with a total of 15 players and coaches – a half pitch training area would be appropriate
- Training or playing areas can be shared with another club at the same time, however the total number of players on a designated training or playing area cannot exceed 30 players and coaches
- For players u12 and above social distancing should be maintained before and after training or playing and during ALL breaks
- All activity must take place on the training or playing area and follow FAW guidelines, players & coaches must adhere to guidelines on hand hygiene at all times
- Contact in training sessions should be kept to a minimum:
  - No handling of the ball (apart from GKs wearing gloves)
  - No throw-ins (pass-ins should replace these for matches)
  - No hand contact (handshakes, first bumps etc)
  - No spitting is allowed



# TRAINING AND PLAYING AREA – INDOOR FACILITIES

- Clubs should seek guidance from the facility provider on the number of people permitted to train at an indoor venue
- The numbers of players and coaches permitted to train will be dependent on the nature of the indoor facility:
  - We would advise that clubs should not have more than 15 players (U12s and above) and coaches training at an indoor (4 court) sports hall. 30 players (U6 – U11) and coaches can train at this type of venue.
  - However, an indoor full-size 3G pitch would be suitable for up to 30 players (U12s and above) to train given the space available. 30 players (U6 – U11) and coaches can train on half-a-pitch at this type of venue.
- All activity must take place on the training or area and follow FAW guidelines, players & coaches must adhere to guidelines on hand hygiene at all times
- In line with latest government advice, coaches, first aiders and team helpers should wear face coverings in indoor facilities
- At this stage, matches are not permitted to take place using indoor facilities for u12 – u16, youth and senior players
- Further guidance on use of indoor sports facilities is available [here](#)
- Contact in training sessions should be kept to a minimum:
  - Maintain 2m social distance where possible at all times
  - Limit the amount of contact between players
  - No handling of the ball (apart from GKs wearing gloves)
  - No hand contact (handshakes, first bumps etc)
  - No spitting is allowed



# TRAINING SESSIONS AND MATCHES

Clubs should plan their activity to ensure that there is the following in place:

- A Club COVID-19 Compliance Officer or Operational Lead present to ensure that groups enter and exit the pitch correctly and register attendees.
- For players aged 12 and above, an agreed meeting area for each individual groups to meet before entering the training area
- For players aged 12 and above, all groups must exit the training area on an individual group basis before the next groups can enter.
- Access to and from the training or playing area must be coordinated and subject to social distancing guidelines.
- Clubs must timetable the arrival of all groups and ensure that car parking areas are marked out accordingly - individual groups must know their arrival time and should wait at agreed meeting point before entering the pitch.
- All groups must clear the pitch 10 minutes before the next training group enters.
- Incoming training groups must remain in their cars or at specified waiting areas until the pitch is clear.

**Example Timetable**

| <b>Training Time</b> | <b>Arrival Time</b> | <b>Finish Time</b> | <b>Maximum group on full pitch (or half-pitch for u6 –u11 teams)</b> |
|----------------------|---------------------|--------------------|--|
| 6pm                  | 5.50pm              | 6:40pm             | 30   |
| 7pm                  | 6:50pm              | 7:40pm             | 30   |

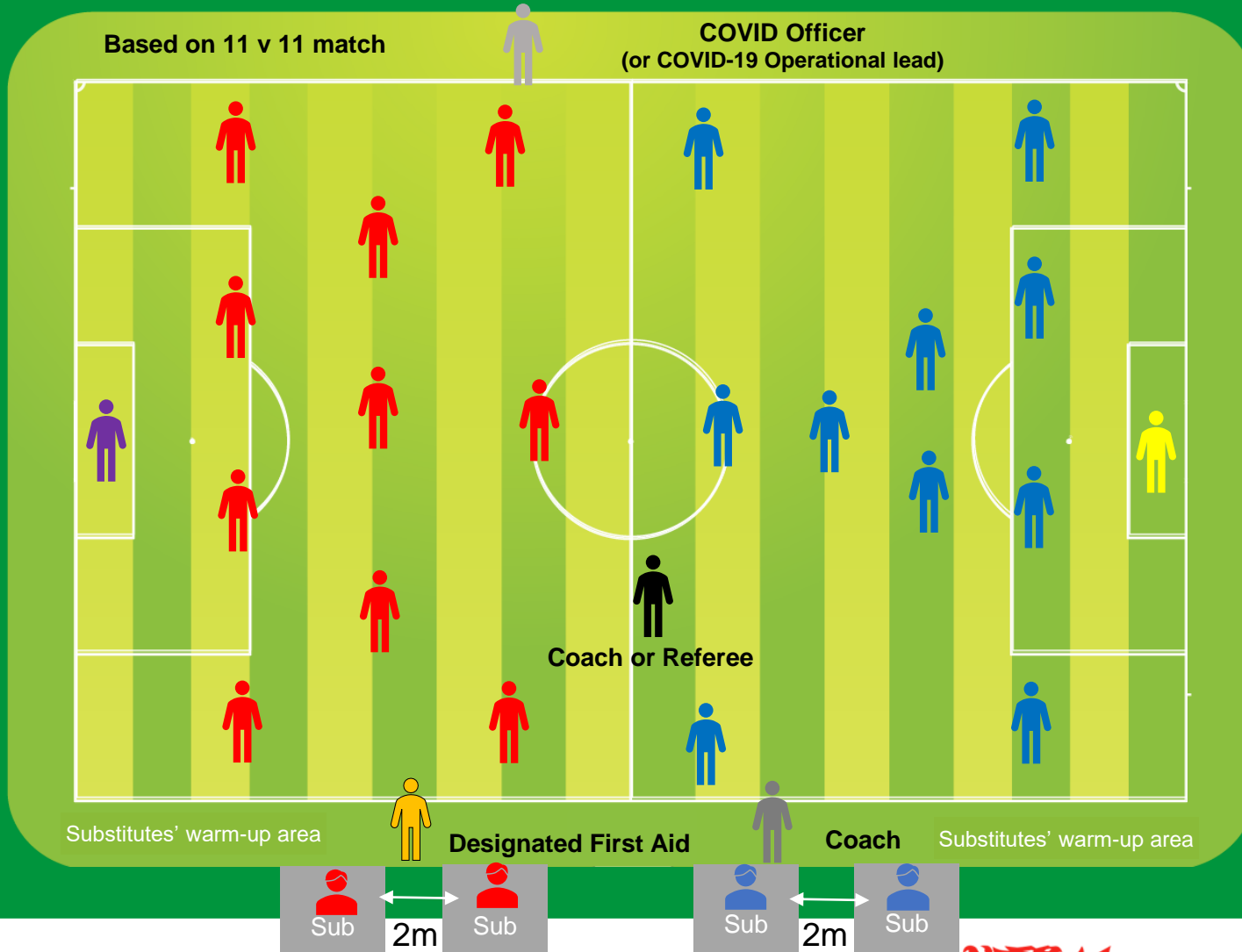


# INTRA-CLUB TRAINING MATCHES

- Intra-club training matches are now permitted at all levels of football
- If playing intra-club training matches, U6 – U16 teams can play against teams 1 age group older or younger within their own club ONLY. If doing so, any in-house match should be played under the format of the youngest age group team i.e. if an u10 team plays against an u9 team the match should reflect an u9 playing format
- Small-sided football regulations are applicable to teams at u6 – u13 age groups – for information on the recommended playing formats for these age groups click [here](#)
- Intra-club training match formats should be as flexible as possible with use of 7v7 and 9v9 formats encouraged given that player availability may be impacted by local lockdown and self-isolation



# INTRA-CLUB TRAINING MATCHES



- ❖ The activity consists of no more than 30 persons.
- ❖ Players, coaches or volunteers residing in local lockdown areas cannot travel outside of their Local Authority to train or play matches.\*
- ❖ Use of changing and shower facilities is not allowed.
- ❖ The 2 metre physical distancing rules can only be breached in the narrow circumstances required during competitive play.
- ❖ Mandatory roles – COVID Officer / Operational Lead, Coach, First Aid. (N.B. An individual may carry out more than one role if feasible and, in this case, an additional person, for example 5<sup>th</sup> sub, can be included, up to the maximum of 30 people.)

\* Professional or elite status players excluded from this.



# INTRA-CLUB TRAINING MATCH PROTOCOLS

1. All persons involved should be temperature tested prior to being allowed entry into the stadium footprint.
2. The host club must ensure, upon arrival, that all persons involved have completed a self-assessment for COVID-19 symptoms check (See page 15). Entry should be refused to anyone who is unable to provide assurance that they have done so and that to the best of their knowledge it is safe for them to take part. Anyone refused entry on this basis must be instructed to immediately self-isolate.
3. All participants must remain socially distanced during breaks in play with spaced areas for equipment and refreshment storage for each individual including officials and substitutes. Coaching staff and substitutes, must, for example, spread out and avoid sharing a dug out or bench if social distancing cannot be observed.
4. Clubs should strictly limit the time spent congregating at a venue before activity begins. Social and physical distancing measures must be applied at such times. Meet-up times should reflect this. This includes arriving changed and ready to begin the warm up, if possible, to minimise time spent waiting.
5. Only people from one household can travel together in a vehicle.
6. No-one should leave home to participate in the match if they, or someone they live with, is symptomatic - or suspects they may have been exposed to the virus.
7. The club must support Test, Trace, Protect by collecting information on all participants at both training and matches, as well as the associated GDPR implications of retaining and making available people's personal information as needed.
8. The match must be played 'behind closed doors' and spectators are not permitted.
9. Water bottles or other refreshment containers, should in no circumstances be shared. Participants will need to bring their own, in a named container.
10. The coach / COVID-Officer is responsible for disinfecting each ball when it goes out of play.
11. Toilets will need to be opened for pre-match, match and for 30 minutes following. Toilets should be cleaned regularly in line with Welsh Government guidance for sports, clubs and facilities. Toilets capacity should be managed via entry and exit and to allow for the 2m physical distancing to be maintained.



# INTER-CLUB FRIENDLY MATCHES

- At this stage, friendly matches against other clubs are permitted for U6 – U16 age group teams ONLY
- Matches should only take place against teams within the same league or local authority, which ever would result in the least distance travelled and conforms with local restrictions that may be in place in your club's area
- Clubs should gain approval from their respective league before friendly matches can be arranged
- There will be a set 3-week period of friendly matches before leagues are able to return – this is set out on page 6
- Clubs will need to act in accordance with local restrictions and self-isolation guidance when arranging and participating in matches
- If an individual who has participated in a match (either a player, coach, first aider, team helper or COVID-19 Officer) subsequently tests positive for COVID-19, the club concerned has a duty to inform the opposing clubs (from within the last 14 days) regarding the positive case
- The point of contact for opposition teams should be the club's COVID-19 Compliance Officer
- Following a positive test, the Test, Trace and Protect services will be responsible for contacting individuals who may need to self-isolate
- Coaches, first aiders and team helpers can only be involved with 1 match per day as government guidelines only permit having contact with 1 'bubble' of 30 per day to limit contact



# INTER-CLUB FRIENDLY MATCH PROTOCOLS

- Clubs should complete a NEW Club Checklist before they return to play matches – available [here](#)
- All players, coaches and first aiders (inc. opposition) must be registered with the home team's COVID-19 Compliance Officer or Operational Lead prior to the start of play
- No spectators (including parents) are permitted to watch matches pitch-side unless there is a health or safeguarding reason for them to be present (further guidance is available on our FAQs document)
- Parents / Guardians will need to drop off and pick up players from a designated area
- An age group team is only able to play against 1 other age group team on a match-day – multi-team festivals and tournaments are not permitted
- More than 1 match for the same home team club can take place on half a full-size pitch providing the total number across both matches does not exceed 30 persons and access to and from pitches is coordinated to limit contact between groups of players
- In this instance, we would suggest staggered kick off times are adopted to limit contact between groups of players
- Matches should be managed by a game leader that could be a home or away team coach or team helper





# INTER-CLUB FRIENDLY MATCH-DAY PROTOCOLS

1. All persons involved should be temperature tested prior to being allowed entry into the stadium footprint.
2. The host club must ensure, upon arrival, that all persons involved have completed a self-assessment for COVID-19 symptoms check (See page 15). Entry should be refused to anyone who is unable to provide assurance that they have done so and that to the best of their knowledge it is safe for them to take part. Anyone refused entry on this basis must be instructed to immediately self-isolate.
3. All participants must remain socially distanced during breaks in play with spaced areas for equipment and refreshment storage for each individual including officials and substitutes. Coaching staff and substitutes, must, for example, spread out and avoid sharing a dug out or bench if social distancing cannot be observed.
4. Clubs should strictly limit the time spent congregating at a venue before activity begins. Social and physical distancing measures must be applied at such times. Meet-up times should reflect this. This includes arriving changed and ready to begin the warm-up, if possible, to minimise time spent waiting.
5. Only people from one household can travel together in a vehicle.
6. No-one should leave home to participate in the match if they, or someone they live with, is symptomatic - or suspects they may have been exposed to the virus.
7. The match must be played 'behind closed doors' and spectators are not permitted.
8. 2 designated areas should be marked pitch-side at least 2m away – these should be used to house home and away team players, coaches and first-aiders during match-play
9. Water bottles or other refreshment containers, should in no circumstances be shared. Participants will need to bring their own, in a named container.
10. The coach / COVID-Officer is responsible for disinfecting each ball when it goes out of play. We would encourage 'pass-ins' to replace 'throw-ins' where possible.
11. Toilets will need to be opened for pre-match, match and for 30 minutes following. Toilets should be cleaned regularly in line with Welsh Government guidance for sports, clubs and facilities. Toilets capacity should be managed via entry and exit and to allow for the 2m physical distancing to be maintained.



# INTER-CLUB MATCHES (U6 – U11)

Match formats and numbers of people permitted to be involved

## Under 6 & 7 – 4v4

8 players per squad = 16 players across both teams

Up to 2 coaches/first aiders/team helpers per team = 4 coaches/first aiders across both teams

1 COVID-19 Compliance Officer / Operational Lead per club = 2 COVID-19 Officers/leads across both teams

**TOTAL = Maximum 22 persons involved in the match**

## Under 8 & 9 – 5v5

10 players per squad = 20 players across both teams

Up to 2 coaches/first aiders/team helpers per team = 4 coaches/first aiders across both teams

1 COVID-19 Compliance Officer / Operational Lead per club = 2 COVID-19 Officers/leads across both teams

**TOTAL = Maximum 26 persons involved in the match**

## Under 10 & 11 – 28-30 persons

12 players per squad = 24 players across both teams

Up to 2 coaches/first aiders/team helpers per team = 4 coaches/first aiders across both teams

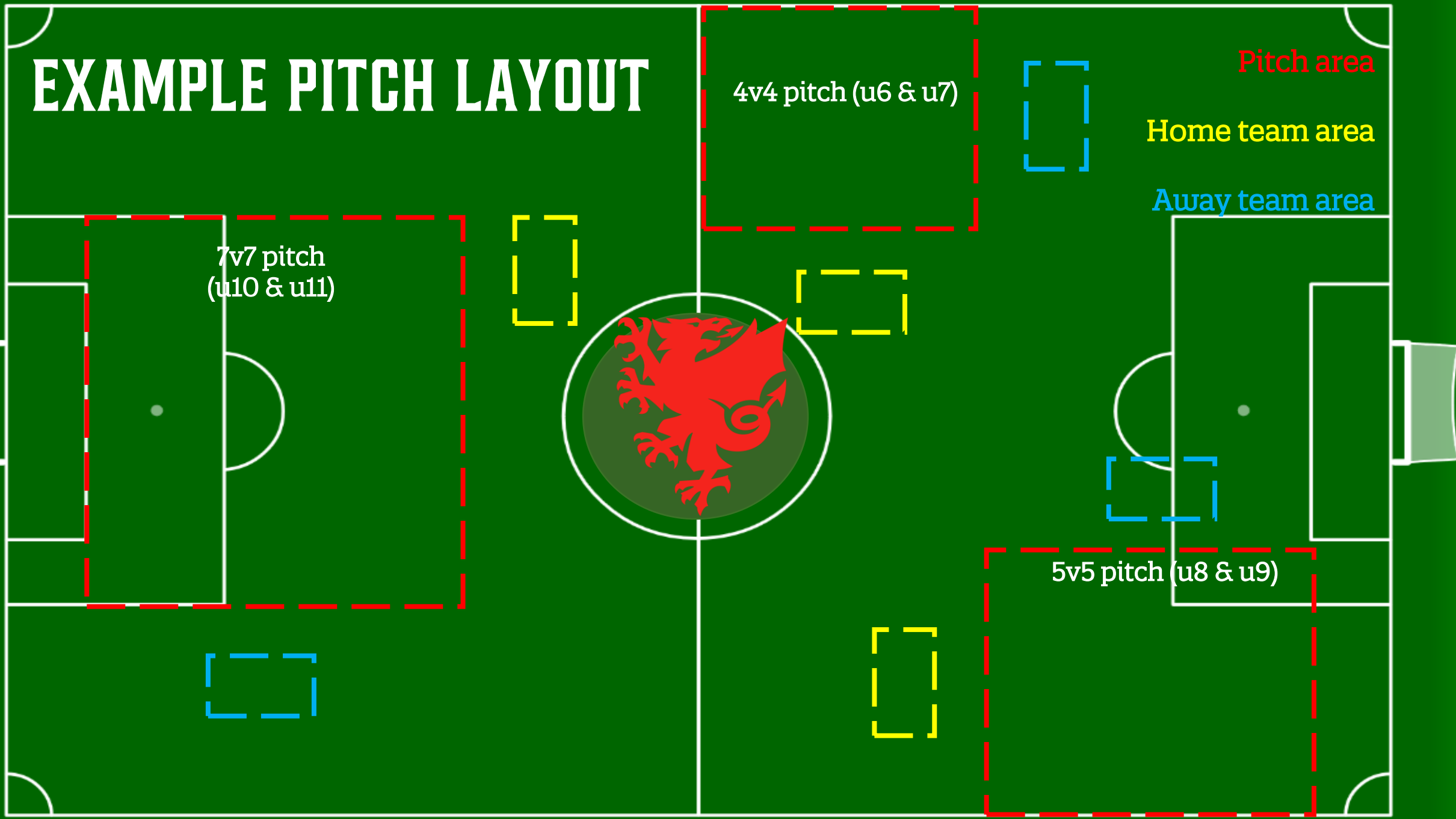
1 COVID-19 Compliance Officer / Operational Lead per club = 2 COVID-19 Officers/leads across both teams

**TOTAL = Maximum 30 persons involved in the match**

All matches should follow age group match regulations available [here](#)



# EXAMPLE PITCH LAYOUT



# INTER-CLUB MATCHES (U12 – U16)

## Suggested match formats and numbers of people permitted to be involved

Use of different formats are encouraged to ensure inter-club matches can be played under as much flexibility as possible, particularly given that player availability may be impacted by local lockdown and self-isolation.

### 7v7 – 28-30 persons

12 players per squad = 24 players across both teams

Up to 2 coaches/first aiders/team helpers per team = 4 coaches/first aiders across both teams\*

1 COVID-19 Compliance Officer / Operational Lead per club = 2 COVID-19 Officers/leads across both teams\*

**TOTAL = Maximum 30 persons involved in the match**

### 9v9 – 28-30 persons

12 players per squad = 24 players across both teams

Up to 2 coaches/first aiders/team helpers per team = 4 coaches/first aiders across both teams\*

1 COVID-19 Compliance Officer / Operational Lead per club = 2 COVID-19 Officers/leads across both teams\*

**TOTAL = Maximum 30 persons involved in the match**

### 11v11 – 28-30 persons

12 players per squad = 24 players across both teams

Up to 2 coaches/first aiders/team helpers per team = 4 coaches/first aiders across both teams\*

1 COVID-19 Compliance Officer / Operational Lead per club = 2 COVID-19 Officers/leads across both teams\*

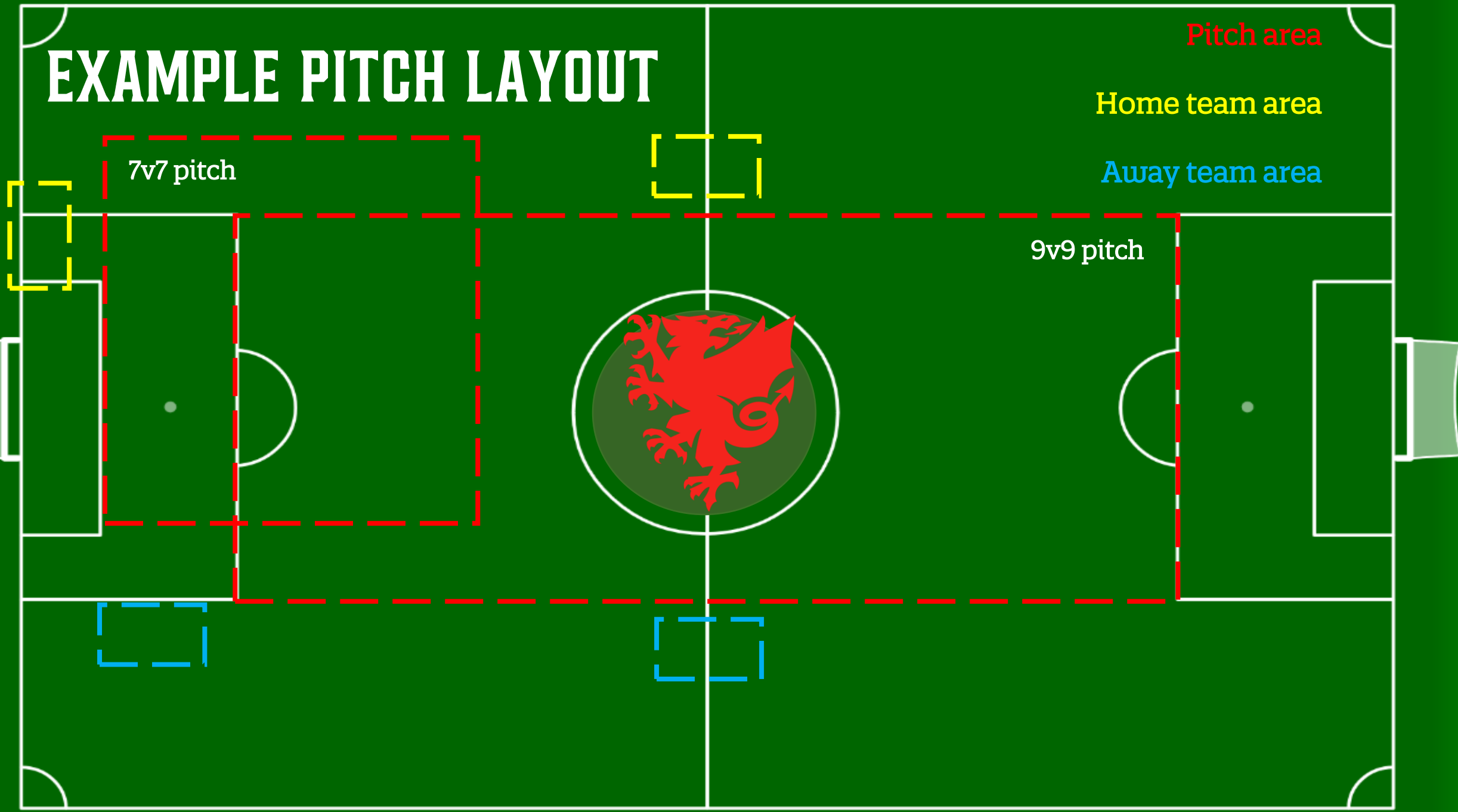
**TOTAL = Maximum 30 persons involved in the match**

\*If a team coach doubles up as a first aider and/or COVID-19 Officer or Operational Lead then additional substitutes would be permitted for that team

Further information on 7v7 and 9v9 formats including pitch and goal sizes are available [here](#)



# EXAMPLE PITCH LAYOUT



7v7 pitch

9v9 pitch

Pitch area

Home team area

Away team area

# COACH RESPONSIBILITIES

- All coaches must be familiar with the updated FAW Safer Return to Play protocol
- All coaches, in partnership with Club COVID-19 Compliance Officer and Operational Leads, must ensure that all participants are briefed on the FAW Safer Return to Play protocol
- Coaches must arrive to training or match in their training kit
- All coaches, in partnership with Club COVID-19 Compliance Officer and Operational Leads, must adhere to FAW Safer Return to Play protocols throughout the full duration of the training session
- All coaches should follow training and playing guidance set out by FAW
- Coaches should be registered on FAW COMET system prior to the club returning to training
- Coaches must provide a register of attendees at all training sessions to the Club COVID-19 officer or Operational Leads for contact tracing purposes
- Coaches should bring their own hand sanitiser
- Coaches must ensure that the training and playing area is clear of all equipment before leaving the facility



# PLAYER & PARENT RESPONSIBILITIES

- All players & parents / guardians of underage players must be familiar with the FAW Safer Return to Play protocol
- Clubs must ensure that all players & parents/guardians of underage players are briefed on the protocol before returning to training
- Players and parents/guardians are advised to keep up to date with the latest COVID-19 advice and information via <https://gov.wales/coronavirus>
- Adult players must arrive to the training venue alone or can be dropped off by a member of the same or extended household – *this is subject to changes in local restrictions*
- Underage players must be dropped off by a member of the same or extended household or can arrive to training venue alone (if appropriate age) – *this is subject to change in local restrictions*
- Parents should not remain at the training or playing venue unless there is a safeguarding or health reason for them to be present
- Any parents who need to remain with their children for safeguarding or health reasons do not need to be incorporated within the maximum of 30-person limit
- Players must arrive in their training or playing kit and with their own equipment including water (labelled with their name) and shin pads
- Goalkeepers, or any player acting as a goalkeeper, must wear their own gloves
- Players should bring their own hand sanitiser
- Personal items must be labelled with the player's name and not shared
- Players must bring all personal items home with them



# MINI & JUNIOR FOOTBALL

## CLUB ACCREDITATION

- Coaches should be registered on COMET
- Clubs will need to have completed their club accreditation to play league fixtures when they return – the deadline for the submission of club accreditation applications is 18<sup>th</sup> September 2020.

## COACHING QUALIFICATIONS

- In line with coach:player ratios – at least 2 qualified coaches should be present on each training area
- Qualified coaches should lead all training sessions and matches

## FIRST AID

- For each club training area (i.e. per group of 30 people), a minimum of 1 FAW qualified first aider (or approved equivalent) that has a valid DBS will need to be present
- This is an amendment to existing club accreditation regulations related to clubs providing a first aid qualified person per age group team/squad
- Therefore, if clubs have multiple age groups training or playing at the same time on the same training or playing area – only 1 qualified first aider is required to be present
- If clubs are using multiple training areas, a qualified first aider is required for each training area and match venue





# MINI & JUNIOR FOOTBALL

## SAFEGUARDING

- Ensure all club safeguarding officers are registered on the COMET system and contact details are made available to those involved in the club.
- Ensure COVID-19 officers has a valid DBS check and their contact details are made available for all involved with the club.
- Ensure all parents contact details are available to enable the club to contact them during training. If a player falls unwell during the session or becomes injured, the parent can be contacted and asked to collect their child as soon as possible.
- Ensure that FAW safeguarding standards and practices are maintained and postpone all activity until it can be provided safely, both in terms of COVID measures and safeguarding.
- FAW code of conducts for parents, coaches and players are available on our website and this will provide further support and guidance. [www.faw.cymru](http://www.faw.cymru)
- If there are any concerns about a child, please report your concern to your club safeguarding officer. Other useful contacts are the FAW Safeguarding Team: 02920 435830/ [safeguarding@faw.co.uk](mailto:safeguarding@faw.co.uk) or the The NSPCC 24-Hour Helpline: 0808 800 5000

**Please remember that child welfare is paramount at all times.**



# NEXT STEPS

- Have AT LEAST one Club COVID-19 Compliance Officer appointed
- Club Management meeting to discuss FAW Safer Return to Play Phase 3 protocols
- Club COVID-19 Compliance Officers to share FAW Safer Return to Training phase 3 protocols with
  - Players
  - Parents
  - Coaches
  - Facility provider (if applicable)
- Complete a NEW COVID-19 risk assessment - this does not need to be shared with FAW for approval
- **If clubs are returning to play matches, a NEW club checklist should be completed for phase 3**

Clubs should meet regularly to review implementation, risk assessment and latest guidelines

All clubs should hold regular de-briefing sessions with coaches, club management and Club COVID-19 Compliance Officers and Operational Leads

