



## **Southampton Spitfires RLFC**

### **DIRECTIONS & PARKING.**

**Southampton Spitfires First Team play their home games at Station Road.**

**GETTING THERE** (Car/Train/Plane/Walking).

Station Road Recreation Ground is located within 5 miles of Junction 8 of the M27. Netley is also easily accessible from the A27 and the A3024

#### **The Tankerville Pavilion**

Station Road Recreation Ground  
Station Road  
Netley  
Southampton  
SO31 5EA

#### **Pre-season Training Ground**

Victoria Road Recreation Ground  
Victoria Road  
Netley  
Southampton  
SO31 5FA

#### **From London:**

Take the M3 to the end, then turn left on to the M27 following signs for Portsmouth. Leave the M27 at Junction 8, turning right at the first roundabout (Tesco), then taking the second exit (sign posted for Hamble). Follow this road (Hamble Lane) straight, across 2 mini roundabouts, for approx 3 miles, ignore the first sign to Netley, until you reach a third roundabout with a right-turn for Netley. This will put you on Hound Road, stay on this road, until you go over a humped railway bridge, just after the bridge turn right into Sellwood Road. Follow Sellwood Road across Hunt Avenue and The Crescent, until you reach a T-junction. Turn left into Queens View, go to the end, turn left again. Station Road Recreation Ground is in front of you at the end of the parade of shops (entrance pictured).



#### **From East or West:**

Join M27, leave at Junction 8, and follow above directions.

From the North: M1 South, A43, M40, A34, M3, M27 then as above.

**No Map?** Put SO31 5EA into your Sat-Nav and it will (hopefully!) guide you to 'Floral Fantasy' Florists on Queens View, 50 yards from the ground and the entrance picture above.

Once you've found the ground please make arrangements to park sensibly, preferably around the corner at the car park in The Crescent. A parking guide is included further down this guide.

## BY TRAIN

Netley Station is on the coastal line between Southampton and Portsmouth. Please note that only the hourly "slow" service stops at Netley. An off peak day return from Southampton is around £4.

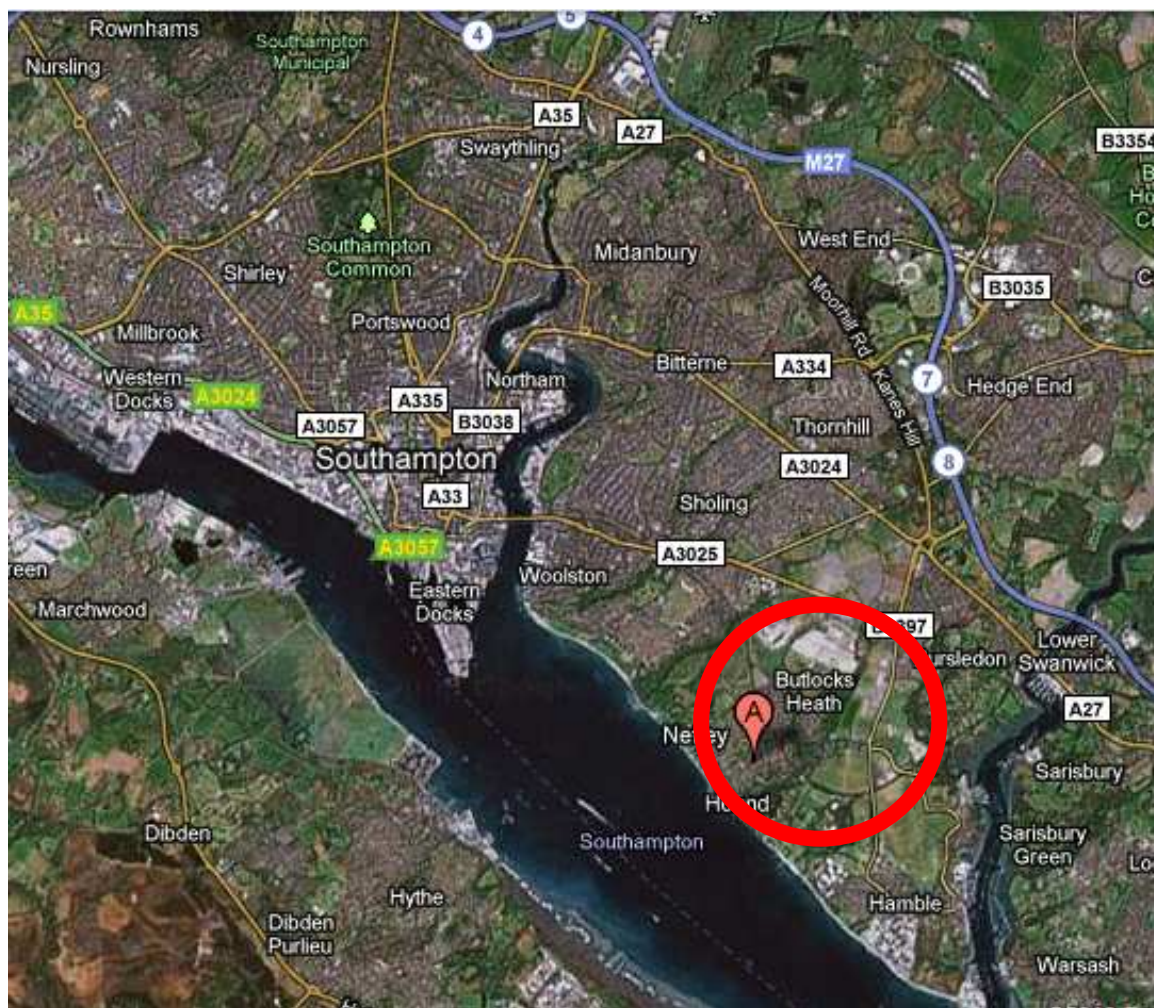
The ground is a 4 minute walk along Station Road (left out of the station car park). Walk past the British Legion on your left. There is a Victorian style gated park entrance to the recreation ground opposite the small annunciation church. If you pass the Netley Central Sports Social Club on your left, you've gone 200 yards too far!

## BY PLANE

Southampton Airport is situated next to the M27 (see route details above) and has its own train station, note you will need to change at Southampton Central for the Portsmouth/Netley train.

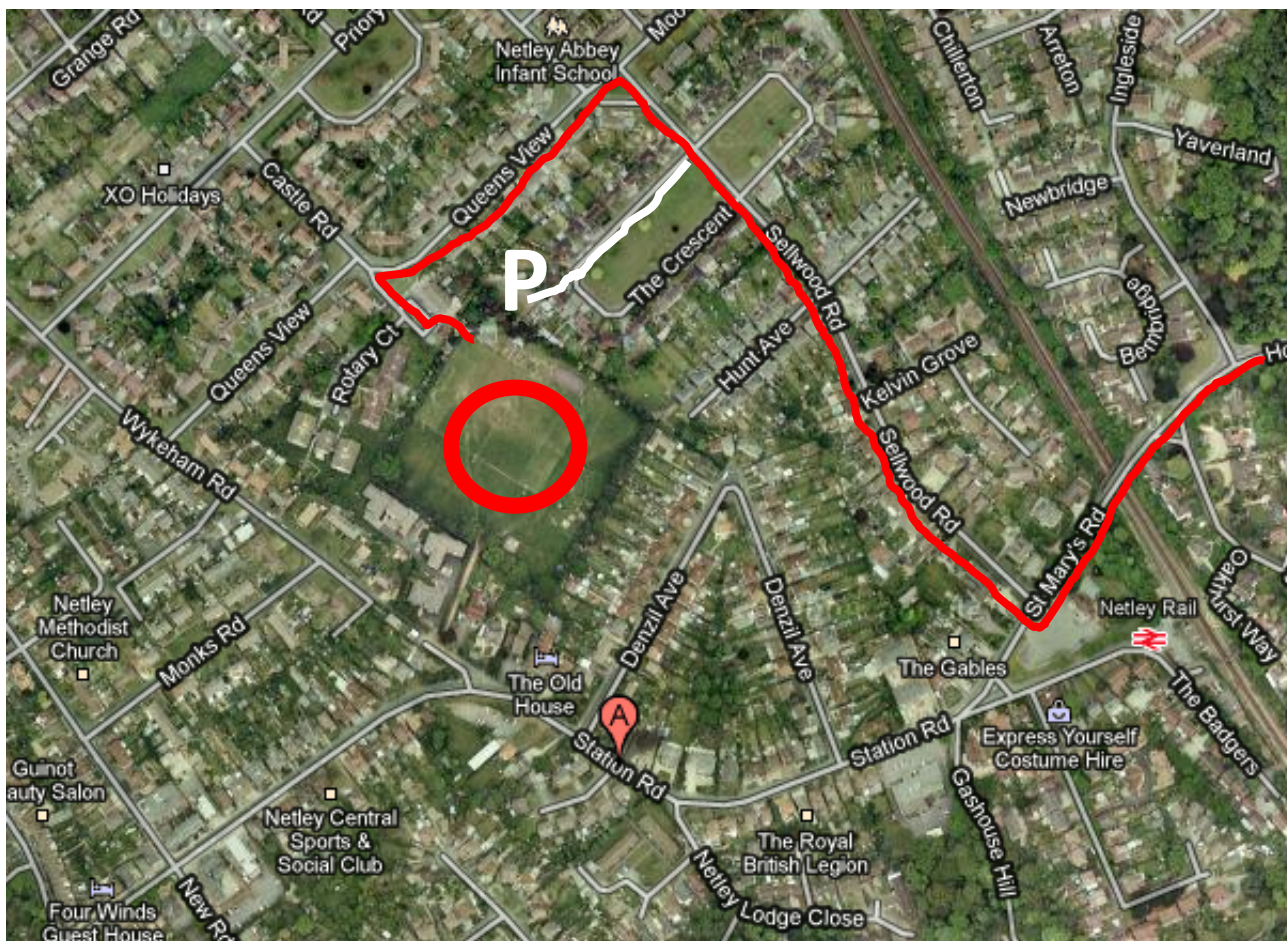
## WALKING

Station Road recreation ground is accessible on foot from Station Road, The Crescent, Queens View and Denzil Avenue.





## PARKING



Parking is a sensitive issue in the area due to the lack of a dedicated car park for the site. Some parking is available in Queens View although we recommend drivers park a street or two away from the ground to minimise congestion as much as possible.

There is a parking site in the corner of The Crescent 20 yards from the Pavilion, with space for around 20 cars. There is also a car park on New Road 5 minutes walk from the ground (left at the end of Station Road).

In all cases we ask that you park carefully and with consideration for local residents, parking on verges, paths, yellow lines or reserved spaces will more than likely result in a fine from the areas very active traffic wardens.



## FACILITIES

Station Road has a newly built pavilion with facilities for home and away teams, referee's room, spectator's toilets, a kitchen with serving hatch opening out to the pitch and great children's facilities including an enclosed children's play area and separate basketball court. The pitch is a well drained full size adult pitch, surrounded by a spectator rope and has six pylon floodlights.

