



Wonersh Cricket Club



Proposal to replace
the cricket net

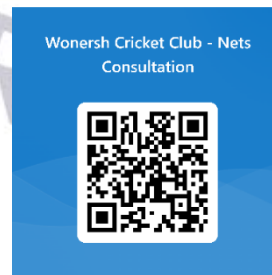
Proposal to build a replacement cricket net facility at Wonersh Cricket Club

We are proposing to build a two-bay practice lane, which will be fully enclosed by nets to ensure the safety of all users of the Common, but which will not be locked, so that the cricket net will also be available for use by anyone in the village.

In advance of the Cricket Club putting together a formal plan, we are inviting local residents to provide feedback on the proposal, either via an online form (click the hyperlink or scan the QR code) or by email:

Online Feedback Form:

<https://forms.office.com/e/TZszBXLDW1>



Email: nets@wonershcc.co.uk

Feedback is welcome up until Sunday 14th May 2023

We will make the facility open and available to everyone, regardless of whether they are a member of Wonersh Cricket Club, so that it can be enjoyed by the whole community.

This is a long-term project, with planning permission and fund raising all needing to be undertaken and the new cricket net is unlikely to be installed before summer 2024 at the earliest. Following its conclusion, the results of this consultation will be shared with Wonersh Parish Council so that they can consider the proposal.

Why do we need a new Cricket Net?

Ever fewer people are playing cricket in England¹. At Wonersh, we are proud to have bucked that trend in recent years, but for the Club to continue to thrive, we need to offer good cricket facilities.

The current cricket net was constructed in the 1970s and is no longer safe to use. It is too short, has significantly reduced light from the Pavilion (built in 2000) and from overhanging trees, and is not an all-weather surface.

Furthermore, there is a general lack of leisure facilities for people in Wonersh village – particularly girls and boys. We now have a very successful junior cricket scheme, run jointly with Shamley Green Cricket Club, with over 200 children taking part each summer; and we would like to establish a women's cricket team. Young players are unable to practice

¹ <https://www.statista.com/statistics/899199/cricket-participation-uk/>

independently outside of organised cricket and we are at a disadvantage in attracting and retaining cricketers who can access better facilities at Shalford, Bramley and Blackheath (to name only a few). Having a good quality cricket net is important to the ongoing viability of cricket in Wonersh.

Where will it go?



The recommended location is on the south-west corner of the Common.

Safety considerations dictate (due to the location of the setting sun), and in order to secure exterior funding, the net must run in a north/south direction. At Wonersh this is in line with the wickets on the square.

We believe the south-west corner would not obstruct other users of the common or existing facilities; and provides sufficient space for the correct alignment of the nets.

The visual impact of this location is reduced by the trees which are growing along Wonersh Common road and along the path crossing the Common.



View from the proposed location towards the Pavilion.

What will it look like?



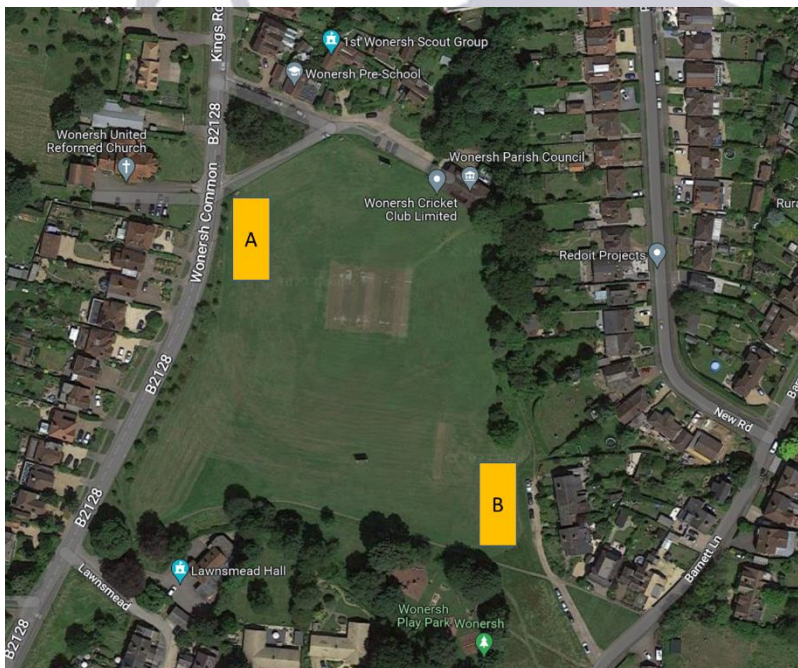
We are proposing a standard two-bay practice net, which will be installed by ECB approved contractors, based on a typical cricket net construction.

The cricket nets will be black or green in colour, to minimise the visual impact on the common.

The photo to the right is an example of a typical cricket net.

What alternative locations have been considered?

There are 2 other potential locations on the common.



Alternative A – the cricket pitch extends up to the bunds near Wonersh Common road and it is not possible to locate a cricket net here as it overlaps with the cricket ground.

Alternative B – this location overlaps with the junior cricket pitch and would be very close in proximity to the properties which are located on the south east corner of the Common.

What facilities do other cricket clubs have?

Blackheath – 3 lane net



Cranleigh – 3 lane net



Albury – 3 lane net



Shalford – 1 lane net



Bramley – 1 lane net



END