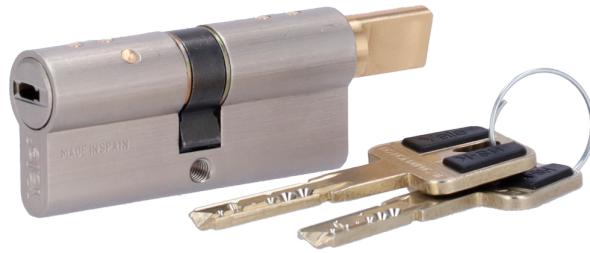


Access Controls / Locks / Smart Locks

YALE-CYLINDER-HSK-3535

YALE



Features

- Yale
- High security double clutch cylinder
- Suitable for YALE-LINUS-L2
- Anti-bumping, anti-picking, anti-drilling and anti-snapping
- System of 7 active pins and 2 sensors
- Dimensions of 35 (inside) x 35 (outside) mm
- Includes ownership card for key copying
- Include 2 physical keys

Specifications

| | |
|---------------|--|
| Brand | Yale |
| Model | HS-K Linus 35x35 |
| Cylinder type | High security cylinder Double clutch |
| Security | Anti-bumping, anti-picking, anti-drilling and anti-snapping System of 7 active pins and 2 sensors |
| Compatibility | Smart lock YALE-LINUS-L2 |
| Dimensions | 35 (inside) x 35 (outside) mm |
| Weight | 150 g |