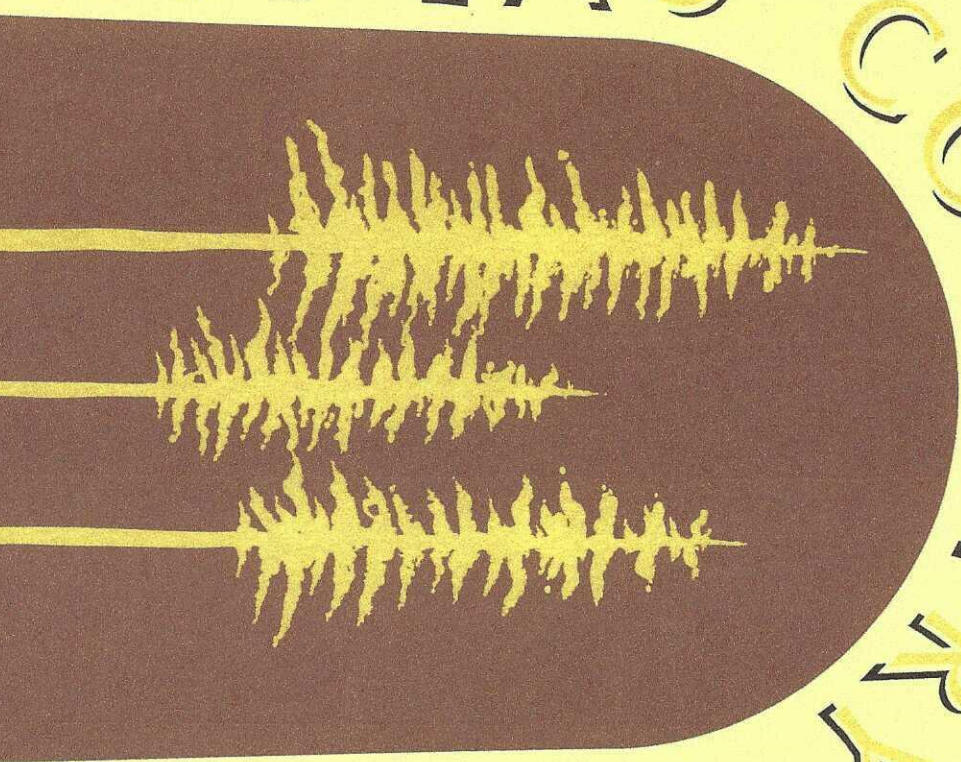


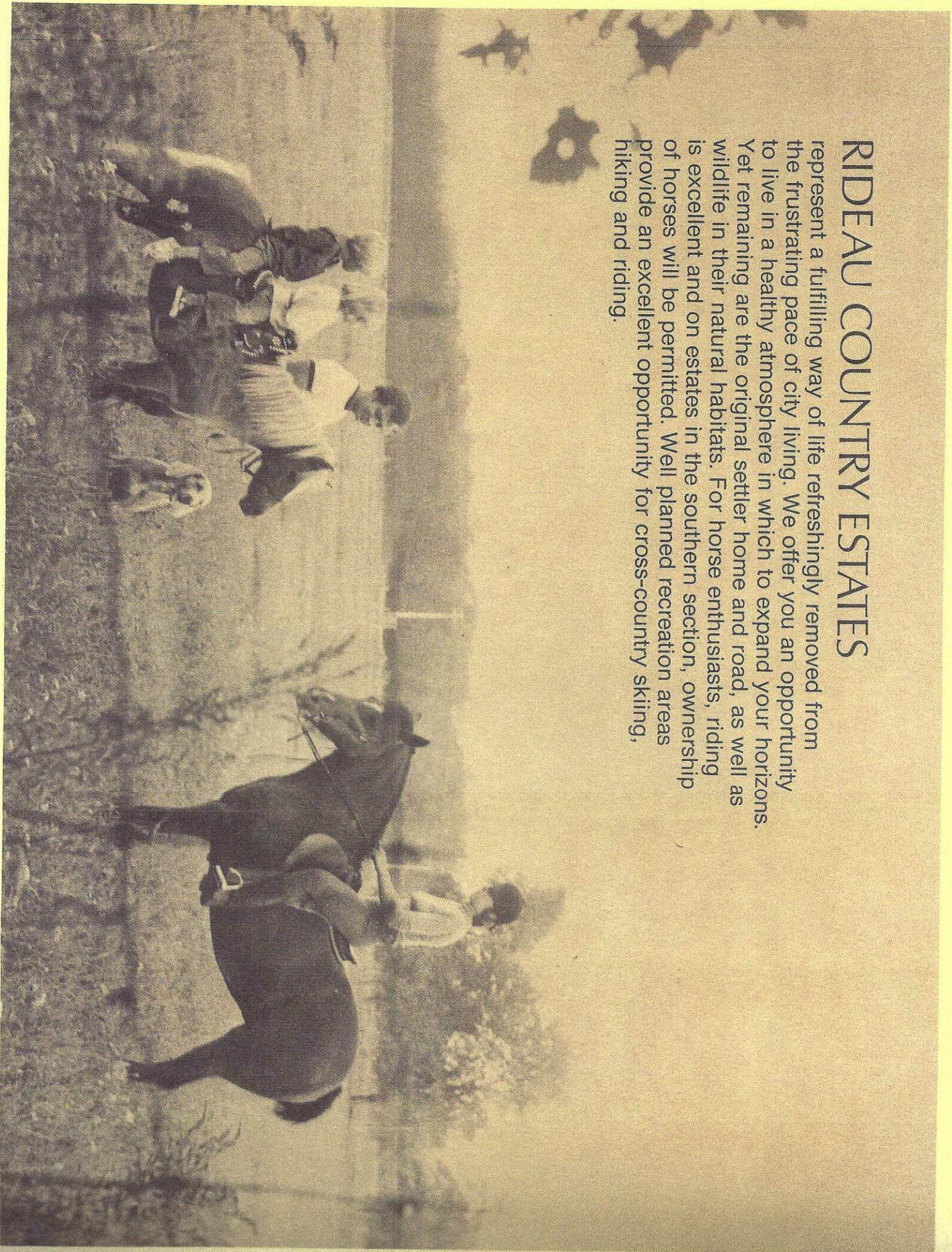
RIDEAU COUNTRY ESTATES

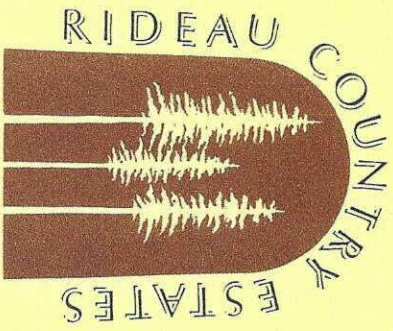


If you want your dream home
situated on a large wooded lot
in the midst of a peaceful
rolling countryside . . .
then we invite you to visit us!

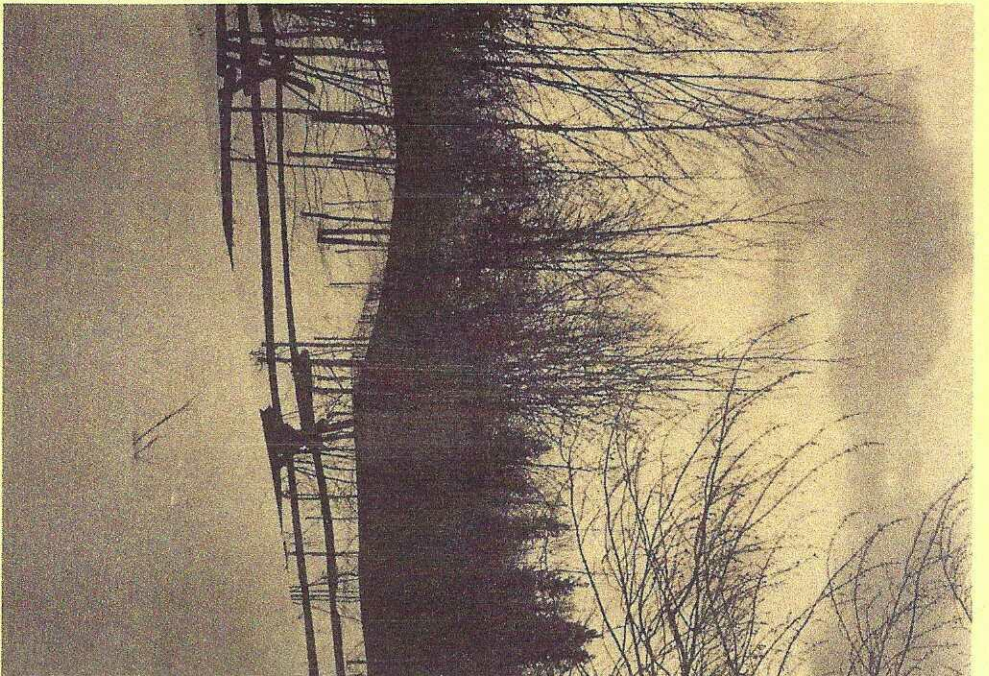
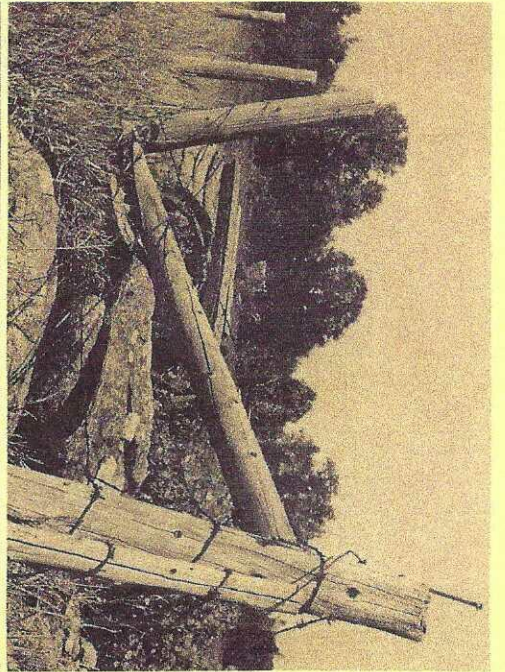
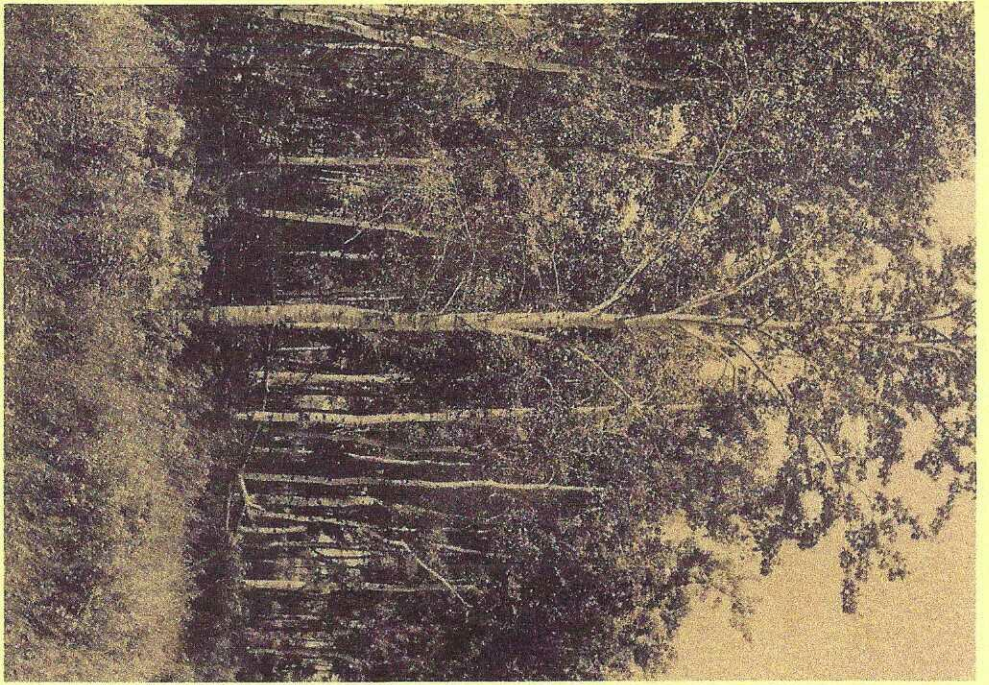
RIDEAU COUNTRY ESTATES

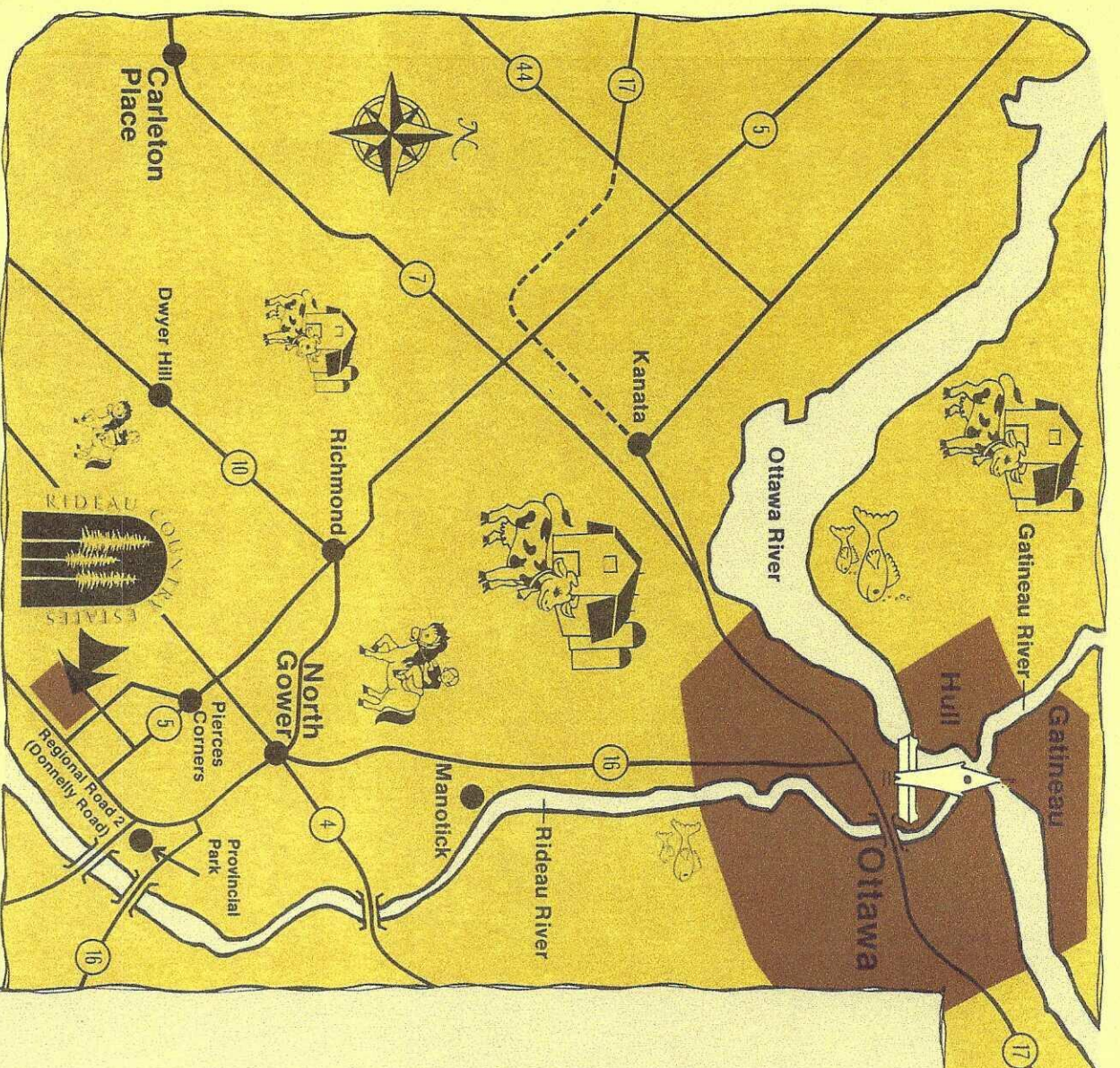
represent a fulfilling way of life refreshingly removed from the frustrating pace of city living. We offer you an opportunity to live in a healthy atmosphere in which to expand your horizons. Yet remaining are the original settler home and road, as well as wildlife in their natural habitats. For horse enthusiasts, riding is excellent and on estates in the southern section, ownership of horses will be permitted. Well planned recreation areas provide an excellent opportunity for cross-country skiing, hiking and riding.





We invite you to call or visit us at Rideau Country Estates
where man lives in harmony with nature.





For more information —

RIDEAU COUNTRY ESTATES

Facilities and Amenities

- Located in Rideau Township in the Regional Municipality of Ottawa-Carleton.
- Easy Commuting — Twenty-five miles from the city limits or Queensway.
- Large wooded lots — 2 to 12 acres.
- Adjacent to proposed Regional Conservation area.
- Bridle paths and abundance of recreational land for — riding, hiking and skiing.
- School buses at the door to excellent Primary and High Schools.
- Sport facilities available at the New Township Arena.
- Two Public Golf Courses close by.
- Public access to the Rideau River within 1½ miles (*Swimming at the Provincial Park*)
- Shopping and Churches within easy driving distance.