

A MAJESTIC TRANSFORMATION

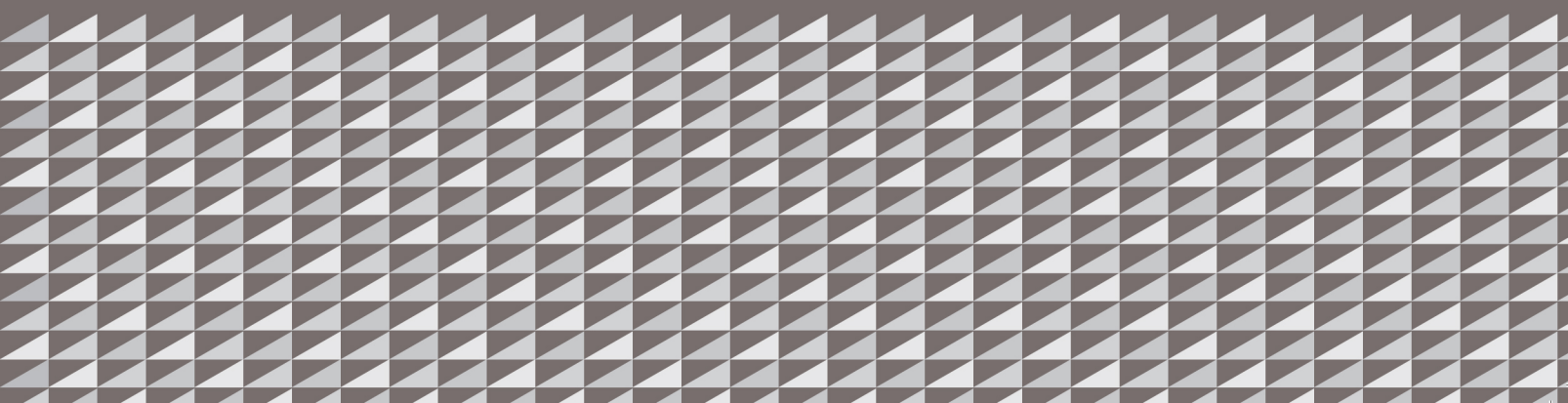


ROYAL APOLLONIA

BEACH HOTEL



LIMASSOL - CYPRUS






ROYAL APOLLONIA
BEACH HOTEL
★★★★★

GRAND RE-OPENING MAY 2013

THE FULLY TRANSFORMED AND RENAMED ROYAL APOLLONIA BEACH HOTEL WAS CONCEIVED TO OFFER ITS GUESTS AN INSPIRING UPSCALE RETREAT IN THE HEART OF COSMOPOLITAN LIMASSOL. ONLY A FEW STEPS SEPARATE THE WARMTH AND WONDERS OF THIS SEAFRONT RESORT HOTEL FROM THE BUZZING ACTIVITY OF CONTEMPORARY URBAN LIFE.

THE NEW LOOK IS CLASSY, THE FACILITIES ARE ENTICING... BUT ABOVE ALL, EVERY VISIT REFLECTS THE HOTEL'S ESTABLISHED REPUTATION AS A FAVOURITE AMONG WORLD TRAVELLERS.



NEW MODERN COMFORTABLE LOBBY

A CULINARY MOSAIC

Contrasting flavours complement each other in local and ethnic restaurants that offer guests a culinary tour around the world. Authenticity meets quality in an expanded variety of indoor and outdoor dining options, each in a distinctive yet equally charming setting.



DIONYSOS RESTAURANT



THALASSAKI RESTAURANT



APHRODITE LOBBY BAR



AKAKIKO JAPANESE RESTAURANT



COSALTRO ITALIAN RESTAURANT



THE ROYAL SPA

The Royal Apollonia Spa promotes overall wellbeing, from the inside out. With 7 brand new treatment rooms, this tranquil escape offers beauty and other specialized treatments and packages, sauna, steam bath, gym room, a large indoor pool and a relaxation area.

ROOMS & SUITES CREATED FOR COMFORT

A menu of room categories guarantees the perfect accommodation for every purpose and occasion. Families and couples, honeymooners and business travellers – all can look forward to undisturbed privacy and the sweetest dreams in fully remodelled guest rooms and suites with comfortable marbled bathrooms.



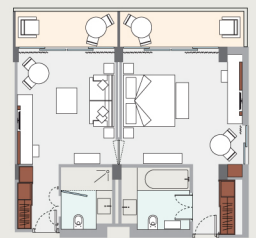
SUPERIOR ROOM
Twin or double bed
26m²



DELUXE SPA ROOM
WITH OUTDOOR JACUZZI
Twin or double bed
26m²



FAMILY ROOM
Double bed + 2 sofa beds
32m²



EXECUTIVE SUITE
Double bed + sofa, separate
seating area, bathroom/shower
and separate kitchenette
56m²

ROYAL APOLLONIA FACT SHEET



LOCATION

Seafront location in the centre of the tourist entertainment area of Limassol. Only 5km to the town centre with public transport outside the hotel, 77km to Larnaka Airport, 65km to Pafos Airport. Ideal for guests who want to enjoy the cosmopolitan fun and entertainment of Limassol, or are visiting Cyprus for business purposes and sightseeing.

RESTAURANTS & BARS

Dionysos Restaurant

international menu/buffet
for all day dining
breakfast 07:00 - 10:30
lunch 12:00 - 15:00
dinner 19:00 - 22:00

Akakiko Japanese Restaurant

open for dinner,
daily 19:00 - 23:00

Cosaltro Italian Restaurant

serves a la carte dinner
daily, 19:00 - 22:30

Thalassaki open-air Restaurant

serves lunch buffet 12:00 - 15:00
summer only

Aphrodite Lobby Bar

open 08:00 - 01:00

Ocean Blue Bar

pool area, open 10:00 - 19:00
summer only

GUEST SERVICES

Reception services:

- Currency exchange, taxi service, car/bicycle rental, doctor (on call)
- Porter service
- Hair salon
- Minimarket
- Internet corner
- Wi-fi in all public areas (free of charge)
- Laundry service (at a charge)
- Parking free of charge

ENTERTAINMENT

- Different Theme Night every evening, including Cyprus, Greek, International, Asian, Gourmet, and Carvery Night
- Live music at the bar three times a week
- Cyprus & Greek nights with live music and dancing

SPORTS & LEISURE

- Sandy beach with sunbeds and umbrellas free of charge
- Swimming pools: 1 island-shaped outdoor pool 523m², 1 children's pool with water features, 1 indoor pool (heated winter only)
- Royal Spa featuring 7 treatment rooms offering beauty and other specialized treatments
- Tennis court
- Aerobics and aqua aerobics
- Gym, relaxation area, sauna, steam bath

CHILDREN'S FACILITIES

- Outdoor kids pool with water features
- Santelino Kids Club (mid-June to mid-September)

CONFERENCE FACILITIES

- One conference room for up to 200 delegates theatre style and 2 syndicate rooms
- Full audiovisual and secretarial support upon request

WEDDINGS

Attractive wedding packages with the support of wedding coordinator for all related services, like flowers, music, photographer, transportation etc.

ACCOMMODATION

The six-storey building with 3 elevators houses 204 guest rooms and suites with ramps for access to all public areas excluding the spa centre and the beach.

Standard amenities in all rooms and suites:

- Ensuite bathroom with shower and WC
- Air-conditioning and heating
- Private balcony or terrace
- Direct dial telephone
- Satellite TV with pay TV
- Radio • Minibar • Hair dryer
- Safety deposit box (nominal charge)
- Wi-Fi (at a charge)
- 24-hr room service
- Tea & coffee making facilities
- Bathrobes and slippers

Room Categories

Superior rooms	(157) with inland or sea view 26m ² / max 3 persons	Honeymoon Suite	(1) with sea view, romantic décor with king-sized bed and jacuzzi bath 47m ² / 2 persons
Deluxe spa rooms	(9) with sea view and private outdoor jacuzzi and sunbathing area 24m ² / max 3 persons	Executive Suites	(5) with sea view, stylish interiors, bedroom connected with sea view lounge with separate shower and separate kitchenette 56m ² / max 4 persons
Family rooms	(27) with inland or sea view 32m ² / max 4 persons	Deluxe Suites	(2) with sea view, modern interior with separate bedroom and lounge 62m ² / max 4 persons
Junior Suites	(3) with inland view, open-plan bedroom and lounge area 36m ² / max 4 persons		