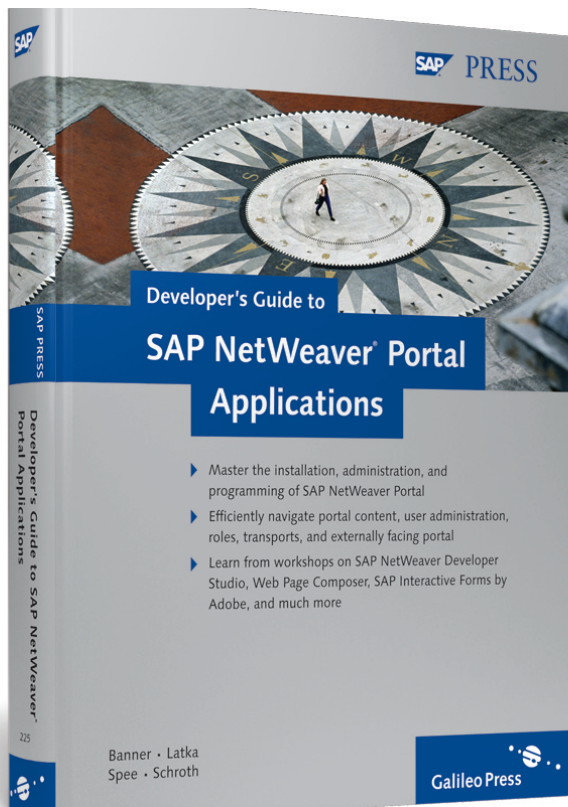


Marcus Banner, Berthold Latka,  
Michael Spee, Roland Schroth

## Developer's Guide to SAP NetWeaver® Portal Applications



 Galileo Press®

Bonn · Boston

# Contents at a Glance

1	Introduction .....	15
2	Installation and Basic Setup .....	23
<b>PART I Fundamentals of Programming and Administration</b>		
3	Portal Content .....	57
4	User Administration .....	125
5	Single Sign-On .....	143
6	External Facing Portal .....	167
7	Web Page Composer .....	187
8	System Administration .....	225
9	Transport .....	237
<b>PART II Extending Functionality</b>		
10	Developing and Customizing Design Components .....	251
11	Developing and Implementing Application Components .....	347
	The Authors .....	413

# Contents

Foreword .....	13
----------------	----

## **1 Introduction ..... 15**

1.1 Structure of the Book .....	19
1.2 Target Audience and Aim of the Book .....	21

## **2 Installation and Basic Setup ..... 23**

2.1 Preparation .....	23
2.2 Installation .....	26
2.3 Basic Maintenance Functions .....	31
2.3.1 SAP NetWeaver Administrator .....	31
2.3.2 Visual Administrator .....	39
2.4 Setting Up the SAP NetWeaver Developer Studio .....	42
2.5 Deployment Tools for the Portal .....	44
2.5.1 Remote GUI of Software Deployment Manager ..	45
2.5.2 Deploy Tool .....	47
2.5.3 Deploy Service in Visual Administrator .....	50
2.6 SAP Communities and Online Help .....	52

## **PART I Fundamentals of Programming and Administration**

## **3 Portal Content ..... 57**

3.1 Basic Structure of the Supplier Portal .....	58
3.2 Content Elements .....	61
3.2.1 Creating Content Elements .....	63
3.2.2 Roles .....	67
3.2.3 Worksets .....	71
3.2.4 Pages .....	73
3.3 iViews .....	76
3.3.1 PAR Files (iViews) .....	79
3.3.2 URL iView .....	81

3.3.3	Property Categories – Role, Workset, Page, and iView Parameters .....	82
3.3.4	BSP iView .....	89
3.3.5	SAP BEx Web Application iView .....	94
3.3.6	SAP Transaction (SAP GUI) .....	97
3.3.7	Web Dynpro .....	101
3.3.8	Generic iView .....	103
3.3.9	Special Function: Change Password .....	104
3.4	Permissions .....	104
3.4.1	Basic Principles .....	105
3.4.2	Anonymous Users .....	107
3.5	Translations .....	109
3.6	Linked Menu Trees .....	113
3.7	Systems .....	117
3.7.1	Alias and Permission .....	123

## **4 User Administration ..... 125**

4.1	Users .....	127
4.2	Roles .....	130
4.3	Groups .....	132
4.3.1	Groups in the Company Concept .....	134
4.3.2	LDAP Groups .....	135
4.4	Users (Import and Export) .....	135
4.4.1	Export .....	135
4.4.2	Import .....	136
4.5	Companies .....	139
4.5.1	UME Definitions .....	140
4.5.2	Delegated User Administrator .....	141

## **5 Single Sign-On ..... 143**

5.1	User Mapping .....	144
5.2	SAP Logon Ticket (MYSAPSSO2 Cookie) .....	147
5.2.1	Cross-Domain Cookie for a Second Portal with Another Domain .....	148
5.2.2	Tip: Web Developer for Firefox .....	150

5.2.3	Error Message: Session Management Will Not Work .....	150
5.3	SAP Certificate .....	153
5.4	SAP ECC Target System .....	154
5.4.1	Error Messages .....	156
5.4.2	Portal Settings .....	158
5.5	Portal-to-Portal Connection .....	158
5.5.1	Transferring a Certificate .....	159
5.5.2	Trust Configuration .....	160
5.5.3	Remote Content Provider (Additional Variant) ....	163
5.6	Third-Party Systems .....	163
5.6.1	Key Tool .....	165
5.6.2	SapGenPse .....	165
5.6.3	Non-SAP Systems and Applications .....	166
<b>6</b>	<b>External Facing Portal .....</b>	<b>167</b>
6.1	Themes .....	168
6.2	Framework .....	174
6.2.1	Standard Framework .....	175
6.2.2	Light Framework .....	178
6.3	Desktop .....	180
6.4	Main Rule .....	181
6.5	Short URLs and Quick Links .....	184
<b>7</b>	<b>Web Page Composer .....</b>	<b>187</b>
7.1	Role Assignment .....	188
7.2	Web Content .....	190
7.2.1	Creating a Site .....	190
7.2.2	Site Content .....	192
7.2.3	Article & Co. ....	193
7.3	Permissions and Details .....	195
7.4	Web Page .....	199
7.5	WPC Navigation .....	204
7.5.1	Publishing the navigation .....	207
7.5.2	Linking Navigation to a Portal Role .....	208

7.6	Integrating a Web Page into Portal Navigation .....	214
7.6.1	Creating a Web Page iView .....	214
7.6.2	Linking a Web Page .....	216
7.7	WPC Permissions (Security Zones/UME Actions) .....	219

## **8 System Administration ..... 225**

8.1	User Management Engine .....	225
8.1.1	Security Settings .....	226
8.1.2	E-mail .....	227
8.1.3	Additional UME Parameters .....	229
8.2	LDAP Connection and SAP User Administration .....	232
8.3	URL Encoding .....	234

## **9 Transport ..... 237**

9.1	Content .....	238
9.1.1	Export .....	238
9.1.2	Import .....	242
9.2	Main Rule, System Alias, and Quick Link .....	243
9.2.1	Main Rule .....	243
9.2.2	System Alias .....	244
9.2.3	Quick Link .....	244
9.3	Themes .....	244
9.4	Users, Groups, and Roles .....	245

## **PART II Extending Functionality**

### **10 Developing and Customizing Design Components ..... 251**

10.1	Overview .....	251
10.1.1	Prerequisites .....	252
10.1.2	Customizing or New Development .....	253
10.1.3	Customizing Within the Context of our Practical Example .....	255
10.2	Basics .....	256
10.2.1	What Is a Portal Application? .....	256
10.2.2	SAP NetWeaver Developer Studio .....	257

10.2.3	JavaServer Pages in the Portal .....	257
10.2.4	Tag Libraries .....	259
10.2.5	Multilingual Capability .....	259
10.3	Customizing the Login Page .....	260
10.3.1	PAR Files of the Portal Components .....	261
10.3.2	Importing the File into SAP NetWeaver Developer Studio .....	263
10.3.3	Changing the Title of the Login Page .....	270
10.3.4	Deployment to the Portal .....	273
10.3.5	Customizing the File authschemes.xml .....	275
10.3.6	New Login Page .....	280
10.3.7	General Structure of a Portal Component .....	281
10.3.8	Parts of the Login Component .....	283
10.3.9	Adding the Terms of Use .....	285
10.4	Creating a Site Map .....	293
10.4.1	Creating a New Project .....	294
10.4.2	Defining the JSP Page as a Component .....	296
10.4.3	Structure of portalapp.xml .....	297
10.4.4	Explanation of Entries .....	299
10.4.5	Integrating the Tag Library .....	300
10.4.6	Implementing the Site Map .....	304
10.4.7	Site Map Layout .....	314
10.5	Creating the Light Framework .....	317
10.6	Customizing the Header Area .....	320
10.6.1	Downloading and Importing the Masthead Component .....	321
10.6.2	portalapp.xml – New Configuration Parameter ...	323
10.6.3	Implementation – Reading the Parameters .....	329
10.6.4	Initial Deployment and Integration into the Framework .....	330
10.6.5	Implementing the Link Display .....	332
10.6.6	Linking the Site Map .....	337
10.6.7	Integration into the Framework .....	338
10.6.8	Setting the Access Permissions for the iView ...	340
10.7	Summary .....	342
10.7.1	Supplementary Notes .....	343
10.7.2	PAR Files of Important Design Components .....	345

<b>11 Developing and Implementing Application Components .....</b>	<b>347</b>
11.1 Building Applications Within SAP NetWeaver .....	348
11.1.1 Remote Function Call and Remote Procedure Call .....	348
11.1.2 Three-Tier Architecture .....	349
11.1.3 Web Services .....	351
11.1.4 Developing with SAP NetWeaver .....	352
11.2 Creating a Sample Model .....	353
11.2.1 Creating the Sample Model as a Web Service ...	355
11.2.2 Creating an EJB Module Project .....	355
11.2.3 Creating a Package .....	357
11.2.4 Creating a Data Transfer Object .....	357
11.2.5 Creating an Enterprise JavaBean .....	360
11.2.6 Adding Functions to an Enterprise JavaBean .....	362
11.2.7 Deploying a Web Service .....	369
11.2.8 Testing the Web Service .....	373
11.2.9 Integrating Web Services .....	374
11.3 Developing a Web Dynpro Application .....	379
11.3.1 Creating a Web Dynpro Project .....	380
11.3.2 Adding Model Proxies to a Web Dynpro Application .....	384
11.3.3 Context of Web Dynpro Applications .....	385
11.3.4 Maintaining View Context .....	389
11.3.5 Creating Views .....	390
11.3.6 Activating Applications .....	396
11.4 Using SAP Interactive Forms by Adobe .....	397
11.4.1 Creating a New Application .....	398
11.4.2 Creating Context .....	398
11.4.3 Adding an Interactive Form to a View .....	400
11.4.4 Creating an Adobe Interactive Form .....	401
11.4.5 Processing an Event .....	404
11.4.6 Sending the PDF Document .....	406
Authors .....	413
Index .....	415



*In this chapter, we provide you with an installation guide for setting up a local portal instance to help you understand the examples.*

## 2 Installation and Basic Setup

To enable you to reproduce in practice the examples that we want to help you understand in this practical handbook, we will explain how to install a local portal environment in the next sections. We have chosen a version that also works on slightly weaker hardware and can be accessed by every reader free of charge from the SAP Developer Network (SDN).

Local portal  
environment

### 2.1 Preparation

To be able to install the SAP NetWeaver Portal, you need at least the following hardware and software equipment:

- ▶ Windows 2000 (Service Pack 3); Windows XP Professional (Service Pack 1) or Windows Server 2003.
- ▶ NTFS file system.
- ▶ Internet Explorer 5.5 (or higher) or Firefox 1.0 (or higher).
- ▶ At least one gigabyte working memory, but we recommend two gigabytes.
- ▶ At least Intel Pentium III/1.1 GHz (or something comparable to this).
- ▶ 14 GB of free hard disk space (8.6 GB for the installed software and 4.9 GB for the installer software).
- ▶ Screen resolution of 1.024 × 768 pixels or more, 256 colors.
- ▶ Sun Microsystems J2SE SDK Version 1.4.2\_08 or 1.4.2\_09. Note that Version 1.4.2\_10 may cause installation problems.

- ▶ If a J2EE Engine is already installed, ensure that none already has the name J2E.

As soon as you have the hardware and software equipment described above, you can begin obtaining the necessary SAP software.

1. Call the *http://sdn.sap.com* URL. You will see a login window on the upper left of the screen, as shown in Figure 2.1.



**Figure 2.1** Login to SAP Developer Network

Logging on to the  
SAP Developer  
Network

2. If you have SAP access, you can log on here directly with your user ID and password. If you do not yet have access, you can use the NOT A MEMBER? link to obtain access to the system free of charge.
3. After you have successfully logged on to SDN, you can search for the appropriate software for the installation. Select the DOWNLOADS function, as displayed in Figure 2.1, from the menu bar. This takes you to the menu area displayed in Figure 2.2.

4. Select the SAP NETWEAVER MAIN RELEASES link displayed in Figure 2.2. This takes you to a download selection. Search for SAP NETWEAVER 7.0 JAVA TRIAL VERSION and download the installation files to your local host.

Downloading the  
software

5. To use the download function, you must be logged on to the SDN system. The following SAP components are contained in the software package:

- ▶ SAP NetWeaver Development Infrastructure
- ▶ SAP NetWeaver Developer Studio
- ▶ SAP NetWeaver Portal with PDK
- ▶ Web Dynpro
- ▶ Visual Composer
- ▶ Content Management and Collaboration
- ▶ TREX
- ▶ SAP NetWeaver Business Intelligence Java SDK
- ▶ SAP Interactive Forms by Adobe
- ▶ Composite Application Framework
- ▶ SAP NetWeaver Knowledge Management

**Downloads - Microsoft Internet Explorer**

Address: <https://www.sdn.sap.com/irj/sdn/downloads>

**SAP COMMUNITY NETWORK**  
Welcome Marcus Banner

SDN Community | BPX Community | Forums | Wiki | Blogs | Articles | **Downloads** | eLearning | Events | Subscriptions

**Search**


All

Advanced Search

- + Software Downloads
  - Application Server Tools
  - Business Intelligence Tools
  - Mobile Tools
  - Portal Tools
  - More Developer Tools
  - Duet Tools
  - SAP Business One Tools
  - Manufacturing Tools
  - Business Process Expert Tools
  - Widget Gallery

**Downloads**

**CE Download Version Available: Get SP3!**

 Develop, model, and design Java and composite applications with the powerful, Eclipse 3.3-based SAP NetWeaver CE applications on a solid and scalable Java EE 5 infrastructure. [More details](#) in SAP NetWeaver Product Manager Jan 6

**Free Download Catalog**

- Software**

  - [SAP NetWeaver Main Releases](#)
  - [SAP NetWeaver Composition Environment](#)
  - [SAP MaxDB - Community Edition](#)
- Widgets**

  - [Widget Gallery](#)
  - [Tools and SAP Foundation for Widgets](#)
- Templates, Plug-ins, and Samples**

  - [for Duet](#)
  - [for SAP Business One](#)
  - [for Manufacturing](#)
  - [for Business Process Experts](#)

**Tools**

- [for Application Server](#)
- [for Mobile](#)
- [for Portal](#)
- [for Business Intelligence](#)
- [More Tools for Developers](#)

[Contact Us](#) | [About Us](#) | [Marketing Opportunities](#) | [Privacy](#) | [Impressum](#)

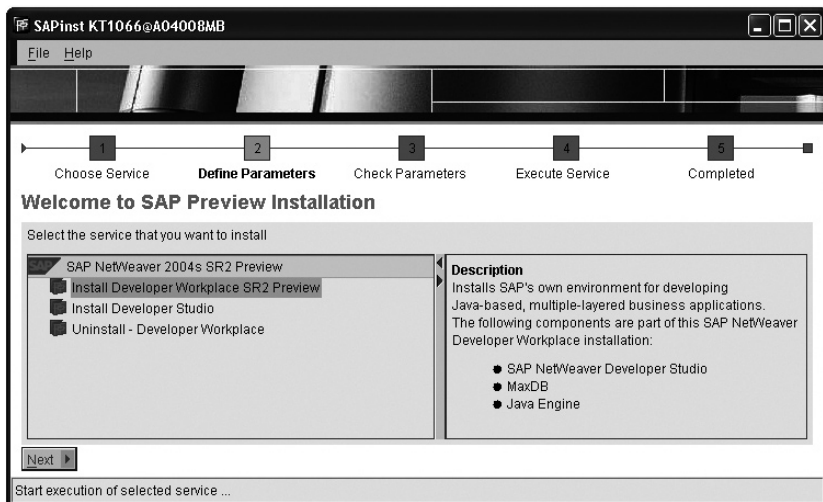
Figure 2.2 Software Download

## 2.2 Installation

After you have downloaded the software (approximately 2.6 GB), unpack the files into a standard folder on your local drive and assign the folder a name of your choice. Then proceed as follows:

Starting the installation

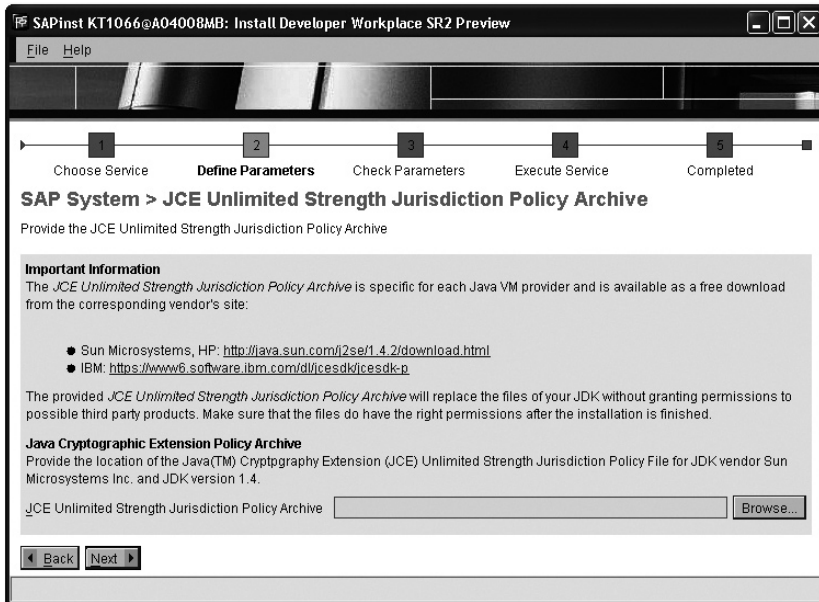
1. Start the *setup.bat* installation file in this folder.
2. The SAP Installer starts and, if you have met the previously described general criteria, a view like the one in Figure 2.3 appears on your screen.



**Figure 2.3** SAP Installer – First Install Screen

3. Choose the first selection in the installer, as shown in Figure 2.3 and click the NEXT button.
4. A dialog screen with the license terms opens. Read this thoroughly and, after you have selected the I HAVE READ AND AGREE TO THIS LICENSE checkbox at the end of the license agreement, click NEXT.
5. The next dialog box is interesting (see Figure 2.4): Before you can install the software further, you must arrange for a Java Cryptograph-

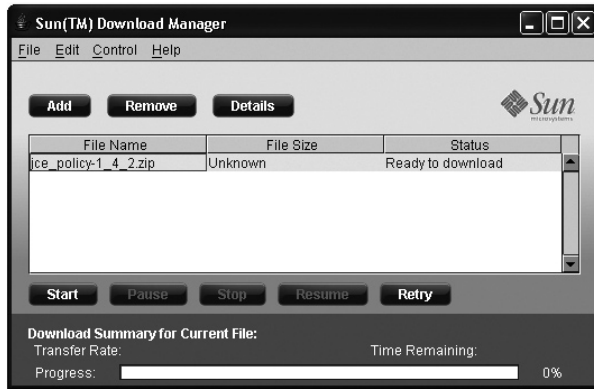
ic Extension policy using a different download. You need this package for the encryption routines in the SAP NetWeaver Portal. Use the links in the dialog box to switch to the corresponding locally installed virtual machine of your manufacturer to download this virtual machine. We have chosen the Sun Microsystems option for this example. Depending on your hardware, you can use other Java VMs (for example, the 64-bit version from IBM).



**Figure 2.4** JCE Unlimited Strength Jurisdiction Policy Archive

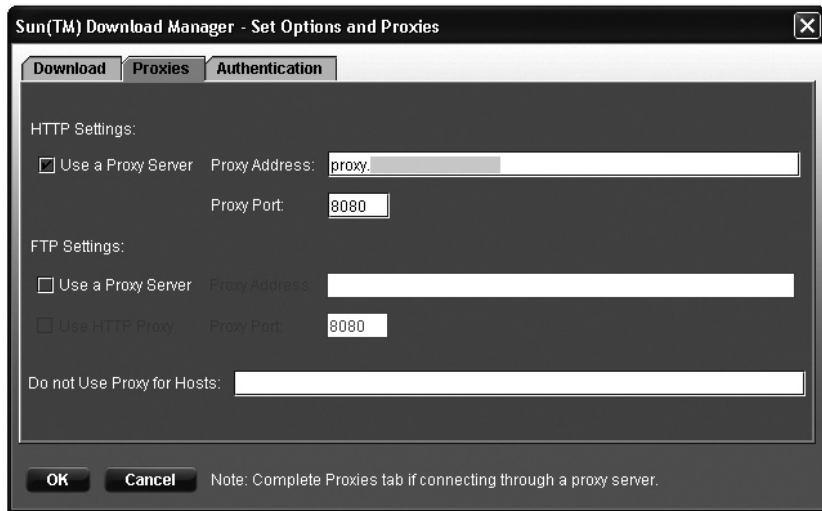
6. There is a small special feature to consider when downloading from the Sun Microsystems homepage. You use your own `SUN_DOWNLOAD_MANAGER` here. If you want to download the software from your company network and find yourself behind a firewall or proxy, you must implement a corresponding configuration in the Download Manager, as shown in Figure 2.5 and Figure 2.6. Select the `CONTROL` menu function (see Figure 2.5). You go from here to the configuration or the proxy and FTP settings.

Installing the JCE  
from Sun  
Microsystems



**Figure 2.5** Sun Download Manager

7. Enter your specific proxy here (see Figure 2.6), and continue the download. A general example is “proxy.sap.de” with the port “8080.” Now download the ZIP file from the Sun Microsystems server.



**Figure 2.6** Proxy and FTP Settings of Sun Download Manager

8. Do not unpack this file; instead, simply specify the path to the zipped file in the SAP installer and then click the NEXT button. The parameters you will use for the installation will then be displayed, as shown in Figure 2.7.

Be absolutely sure to check whether you have set all parameters correctly here. If you are uncertain or if you notice an error, you can change the parameter by selecting the checkbox next to the parameter and clicking **START**. You can change this parameter in the subsequent dialog box. You then go to the summary from the window in Figure 2.7 again.

9. After you have set all parameters correctly, you click the **START** button, which takes you to the actual installation process. The individual installation phases are run and displayed graphically. If an error occurs during the installation, this is also displayed and explained in the installer.

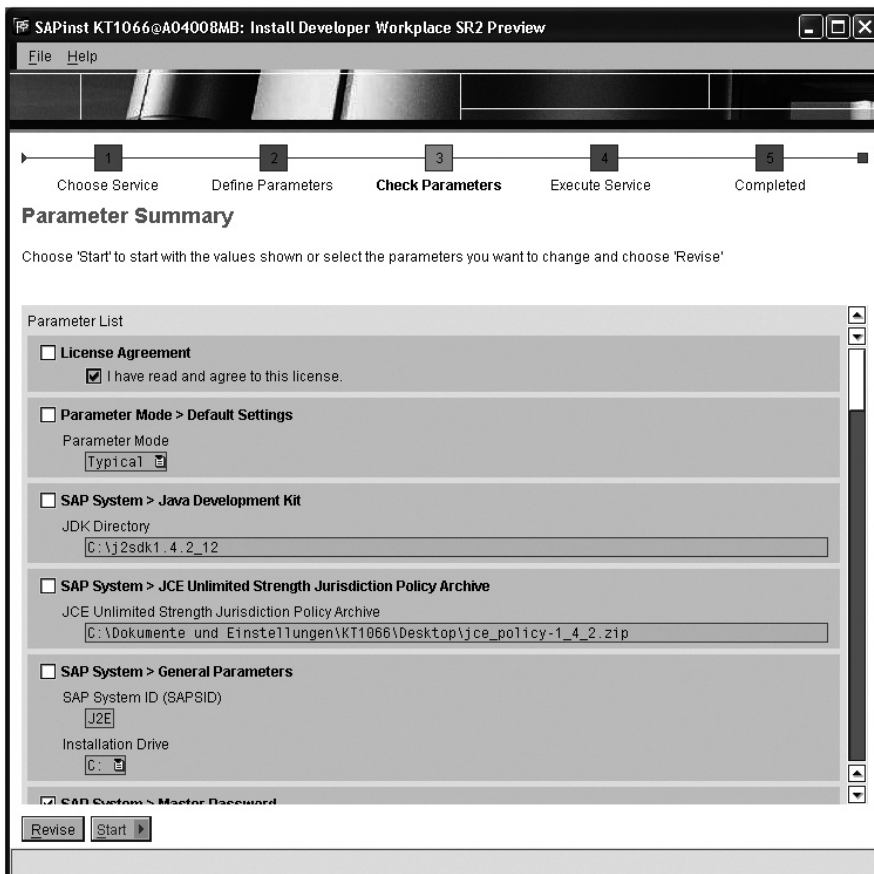


Figure 2.7 Parameter Summary

### Installing the SAP NetWeaver Developer Studio

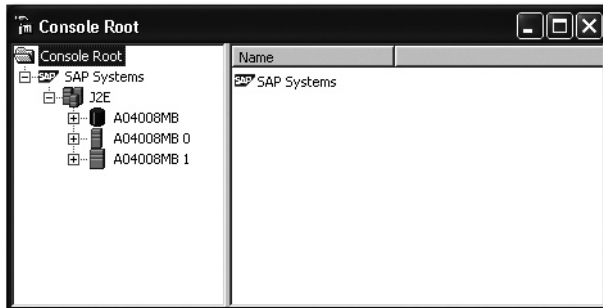
10. The installation package selected in our example also contains the local development environment, which we will explain in detail in the next chapters. If you have already installed this development environment, we recommend that you save your local workspaces, because a new installation of the SAP NetWeaver Developer Studio will be performed automatically.

11. After you have installed the SAP NetWeaver Developer Studio successfully, you should restart your host to enable you to complete the installation.

### SAP Management Console of SAP NetWeaver Portal

12. After you restart your host, you will find a new entry called SAP MANAGEMENT CONSOLE in your Start menu. Start this tool. The dialog box shown in Figure 2.8 will now appear. You can use this tool to start and stop your local portal and identify problems during operation. You can also access the web administration interface of your local MaxDB portal database from here.

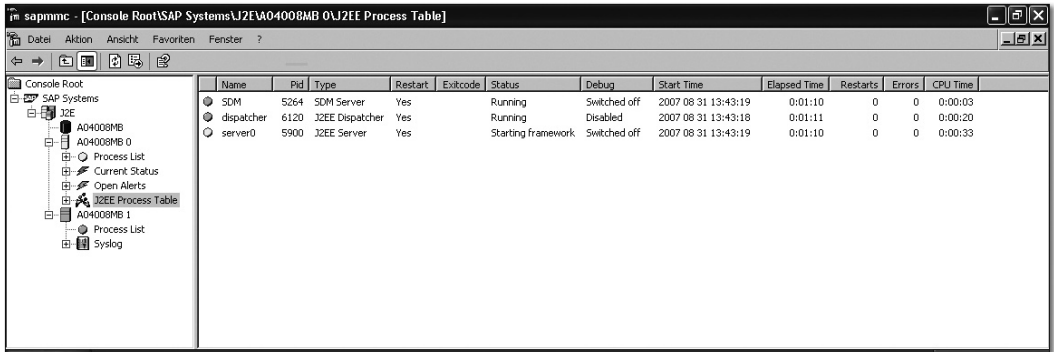
In Figure 2.8, you see (similar to your dialog box) your portal instance called J2E, your dispatcher, your server nodes and, highlighted in blue, your database. To start the portal, select the J2E node and click the START button.



**Figure 2.8** SAP Management Console

13. This starts the portal. This process may take several minutes, depending on the hardware you use. You will see the availability of your local portal when the color of all text displayed in gray changes to green (see Figure 2.9); they appear in yellow while the portal is being started.





**Figure 2.9** Starting the Portal

14. You access your local portal by using the host name of your local host (not the IP address) and the */irj* extension and portal 50000, for example, *http://yourhost:50000/irj*.
15. You then go directly to the home page of the portal. If you only use the URL with the port and without the *irj* addition, you will go to the home page of the J2EE Engine, where you will find tools that include user administration and the SAP NetWeaver Administrator (NWA).

## 2.3 Basic Maintenance Functions

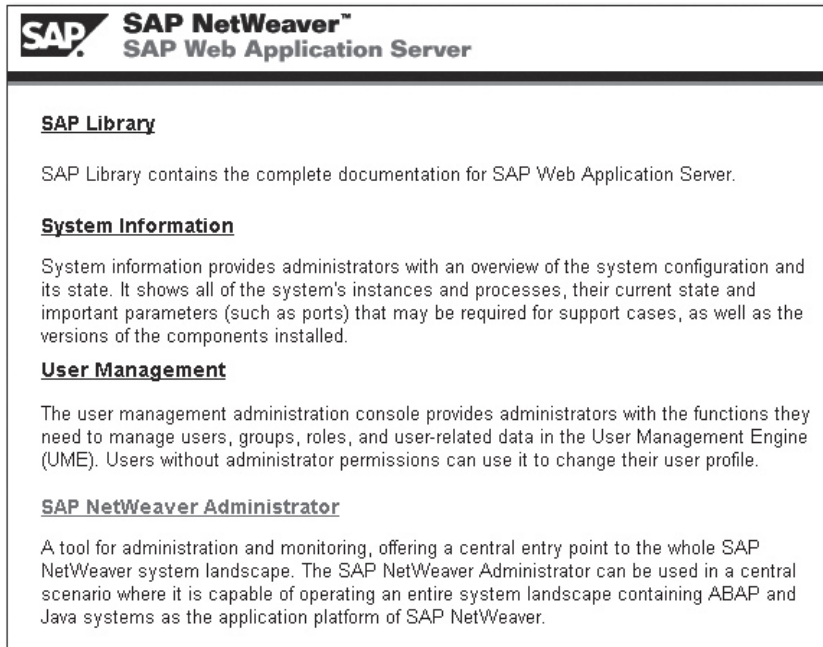
To be able to maintain the SAP NetWeaver Portal yourself, we want to briefly familiarize you with some of the most important tools and functions. These are the SAP NetWeaver Administrator and Visual Administrator tools.

### 2.3.1 SAP NetWeaver Administrator

As soon as you have successfully started your portal, you can essentially control it using the web-based SAP NetWeaver Administrator.

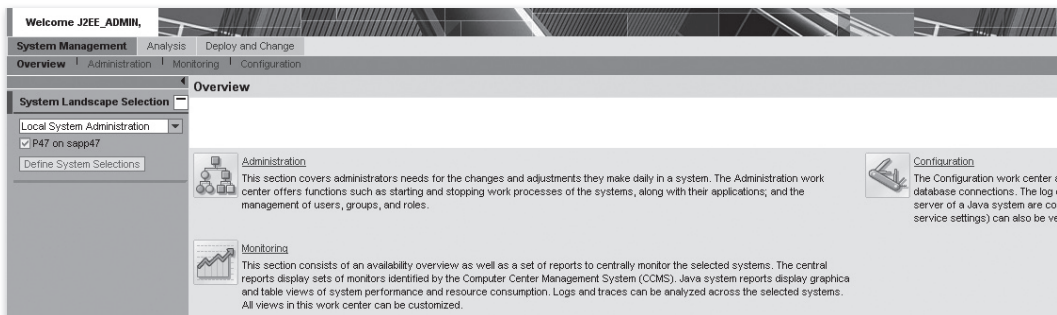
1. To start this tool, go to *http://yourhost:50000* and select the SAP NETWEAVER ADMINISTRATOR function (see Figure 2.10).

Calling the SAP NetWeaver Administrator



**Figure 2.10** SAP NetWeaver Administrator of J2EE Engine

2. After you click the link, you are prompted to log on to the system, after which you go to a menu overview (see Figure 2.11).



**Figure 2.11** Administration Menu of SAP NetWeaver Administrator

3. You will see three segments on the main screen in Figure 2.11.

► **Monitoring**

The *MONITORING* segment consists of an availability overview and a number of reports for monitoring the selected systems centrally. The central reports display monitors that were identified by the Computer Center Management System (CCMS). Java system reports display graphic and table views of the system performance and resource consumption. You can analyze logs and traces over all selected systems. You can also customize all views accordingly in this work center.

► **Administration**

The *ADMINISTRATION* segment covers the requirements of administrators regarding necessary changes and customizations that they make daily in a system. The Administration work center contains functions such as starting and stopping the work processes of systems together with their applications and managing users, groups, and roles.

► **Configuration**

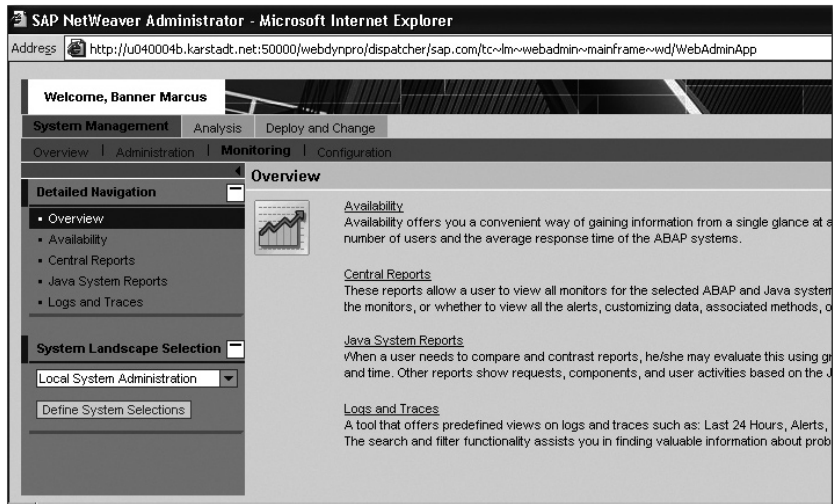
You can use the *CONFIGURATION* segment to configure Java applications and resources used by the applications, for example, database connections. You use the log configuration tool to customize log and trace settings. Tasks for configuring the web server of a Java system are also covered. The user can also check all system properties of a selected system (for example, VM parameters and service settings).

## Monitoring Functions

After you have called the *MONITORING* segment by clicking its link, you go to a dialog screen (see Figure 2.12) where you can call the following functions:

► **Availability**

The *AVAILABILITY* function enables you to find out about all selected systems conveniently at a glance. The function includes status icons and progress bars for the availability level of contained instances. The detail view gives you additional information about the current number of users and the average response time of ABAP systems.



**Figure 2.12** Monitoring Functions in SAP NetWeaver Administrator

### ► Central Reports

CENTRAL REPORTS enable users to display all monitors for the selected ABAP and Java systems and their applications. They are sorted according to monitor sets (view sets) and monitor groups (views) that can be selected. Users can also specify whether they want to display the current data for the monitors or all alerts, Customizing data, associated methods or defined threshold values. All views contain details such as configuration data, history, and the Alert Browser, where the alert history and complete alerts are reported.

### ► Java System Reports

If users have to compare or contrast reports, they can do this using graphical charts or tables that display capacity planning, resource consumption, and error statistics. The reporting times can be customized by selecting a predefined period or setting a personal date or time. Other JAVA SYSTEM REPORTS show requests, components, and user activities based on the Java Application Response Time Measurement (JARM). A local monitor browser and a table of requests that are being processed at the time are also available. This function enables you to see the current memory consumption of your portal applications at a glance (see Figure 2.13).

### ► Guided Procedures

Under GUIDED PROCEDURES, you can display the current status of guided procedures components. Export and import requests are displayed together with transferred content for a certain period. All activated templates can be checked for flow, parameter types and parameter mappings, Object Linking and Embedding (OLE), attachments, and so on. You can search for process instances and check their status and parameter values as well as the document status and background queues.

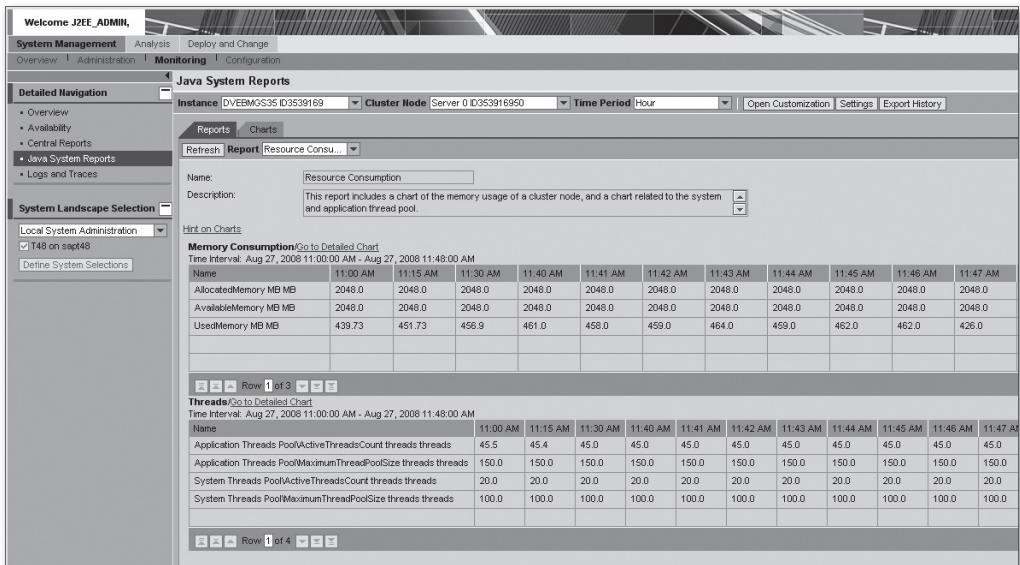


Figure 2.13 Java System Reports – Memory Analysis

### ► Logs and Traces

LOGS AND TRACES contains a tool that provides predefined views for logs and traces, such as the last 24 hours, alerts, and SAP logs. You can conveniently use this tool to display different log files, which you can call by clicking them. If you select a user-defined view, you can create a personalized view. Search and filter functions support you when you are searching for valuable information about problems and alerts. If necessary, you can customize the table in such a way that only the required information is displayed, and unnecessary details are not. In this function, you can go to troubleshooting in the system environment and specifically search for errors in the log (see Figure 2.14).

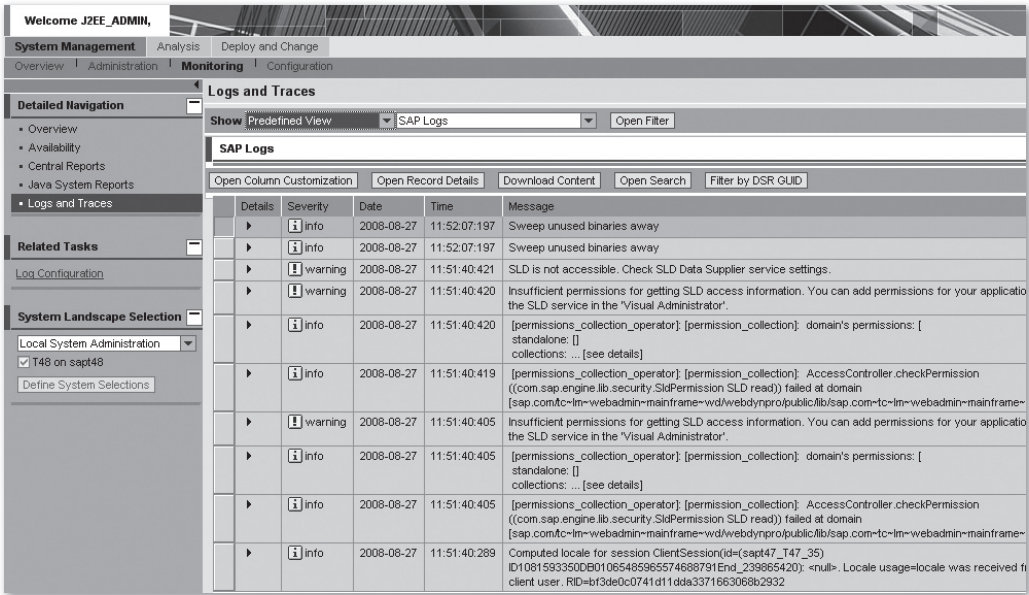


Figure 2.14 Error Log Analysis

### Administrative Functions

You can call the following functions (see Figure 2.15) in the Administration area.

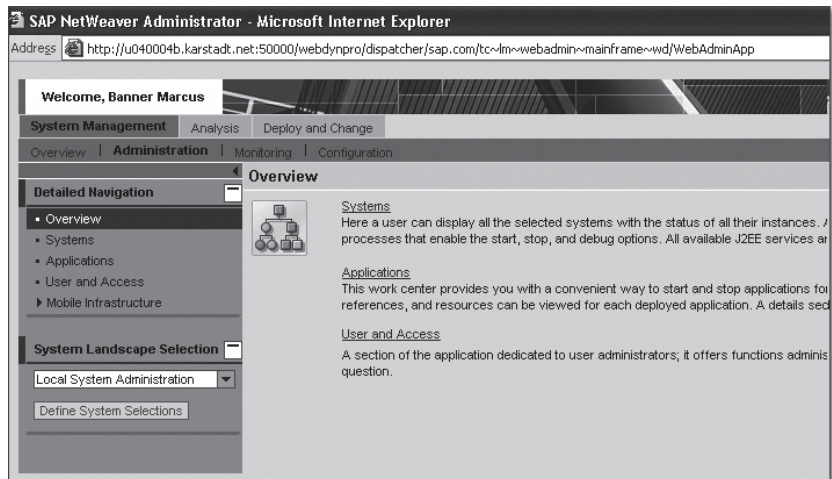


Figure 2.15 Administrative Functions of SAP NetWeaver Administrator

► **Systems**

Under SYSTEMS, you as the user can display all selected systems together with the status of all corresponding instances. You can also obtain specific information about the systems, such as instances, host names, and versions. When you select an instance, a DETAILS frame displays the J2EE processes with start, stop, and debugging options. All available J2EE services are listed, which you can activate or deactivate from this frame.

► **Applications**

The APPLICATIONS work center enables you to start and stop applications conveniently for all selected systems. An advanced search function enables you to find the relevant applications quickly and easily. You can display statuses, modules, references, and resources for each deployed application. DETAILS contains additional data such as the deployment time and duration, archive size, and failover settings. Here, you can specifically stop and start your own web applications that you deployed on the portal (see Figure 2.16).

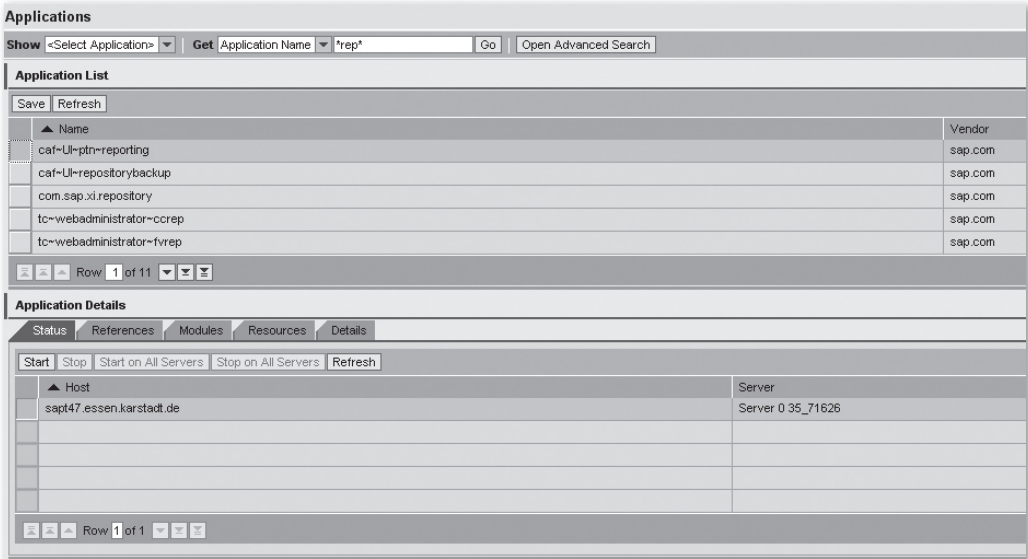


Figure 2.16 Starting and Stopping Applications

► **Identity Management**

The USER AND ACCESS part of the application is tailored for user administrators. It provides required functions for managing users, groups,

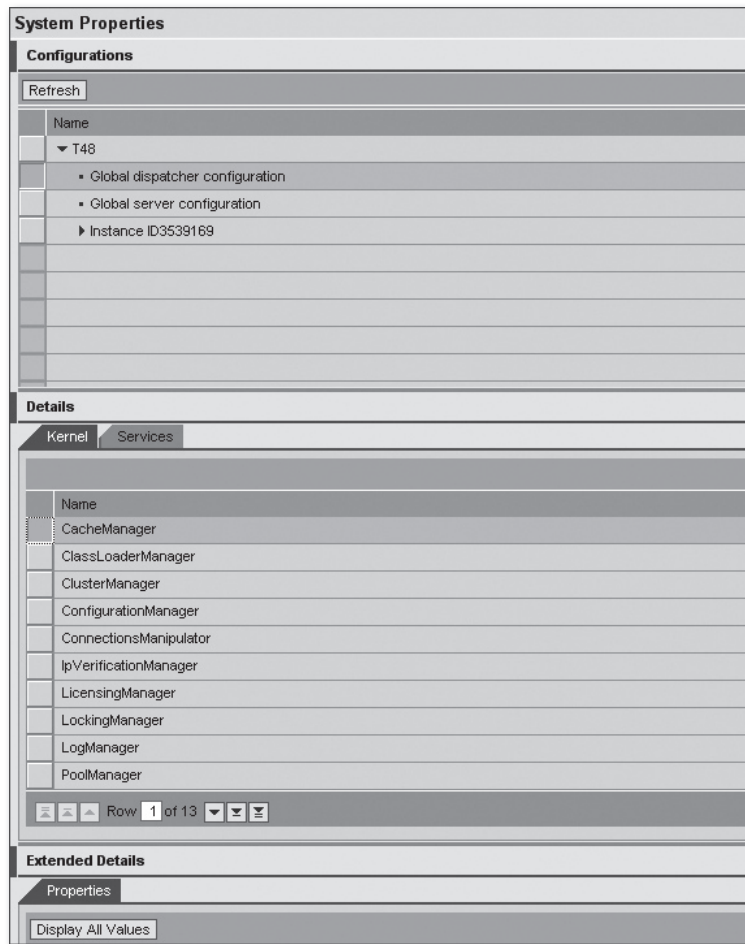
User management in the portal



roles, and user-specific data for J2EE systems in the User Management Engine (UME). In terms of ABAP systems, you use Transaction SU01 of the relevant system. We will describe this function in more detail in Chapter 4 User Administration.

## Configuration Functions

As soon as you click CONFIGURATION, you go directly to the configuration dialog box, as shown in Figure 2.17. You can display the individual parameters of your portal here. This is often useful if you have to check SAP notes to analyze error situations in the J2EE environment.



**Figure 2.17** Configuration Dialog Box of SAP NetWeaver Administrator



### 2.3.2 Visual Administrator

Another important tool for the administration of your portal is the Java-based Visual Administrator. The Visual Administrator is a GUI-based version of the SAP NetWeaver Administrator but has considerably more functions than the web-based SAP NetWeaver Administrator. The Visual Administrator is therefore a very powerful tool. You will find this tool on the installation drive via the <drive>:\usr\sap\J2E\JCO0\j2ee\admin path.

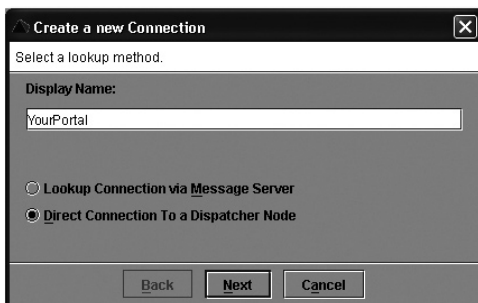
Using the Visual Administrator

1. This folder contains a file called *Go.bat*. Start this file locally on your host. The local Visual Administrator with the connection dialog box shown in Figure 2.18 now starts.



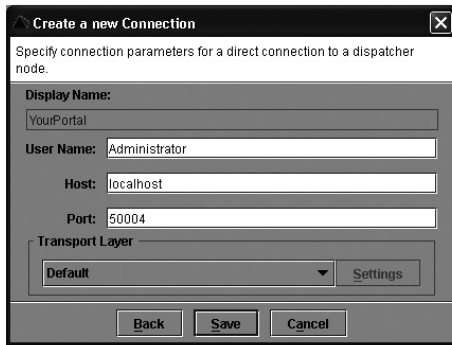
**Figure 2.18** Connection Dialog Box of Visual Administrator

2. To establish a connection to the portal, you must first set up a new connection. Click **NEW**. You now go to the dialog box displayed in Figure 2.19.



**Figure 2.19** Setting Up the J2EE Connection for the Visual Administrator

3. Choose the DIRECT CONNECTION TO A DISPATCHER NODE function and enter a name for the connection. This creates a direct connection to your locally installed J2EE Engine. Click NEXT.
4. In the next window (see Figure 2.20), enter the user name that you want to use to connect to your portal. In this example, use the “Administrator” build-in account. Also enter the host name of the target system and the port. The port is always the standard J2EE port selected by you plus 4, therefore, port 50000 + 4 in our example.



**Figure 2.20** Connection Parameters of J2EE Connection

5. Click SAVE to save the connection in the connection overview and to enable you to select it.
6. Select your entry, as shown in Figure 2.18, and click the CONNECT button. A login screen appears containing the user you set. Enter your password here and connect to the J2EE stack of your portal. An overview of the Visual Administrator similar to the one shown in Figure 2.21 should now be displayed.
7. On the left, you will see a tree structure under the J2E node. Your local DISPATCHER and SERVER 0 of your local portal appear here accordingly. We are particularly interested in the SERVICES function of SERVER 0; simply expand this tree as shown in Figure 2.22.

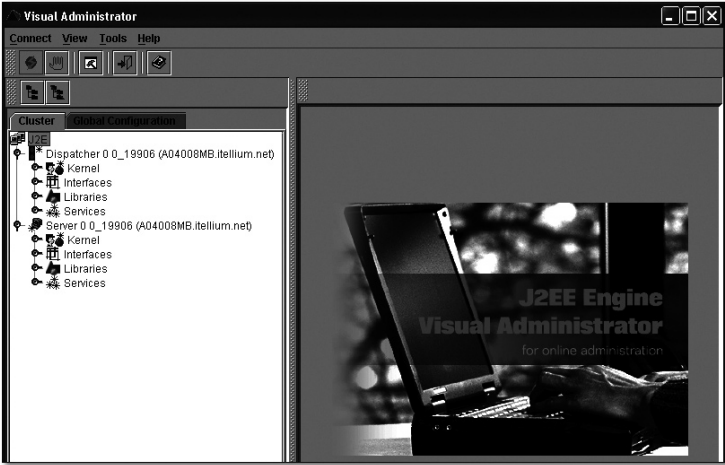


Figure 2.21 User Logged On to Visual Administrator – J2EE Stack

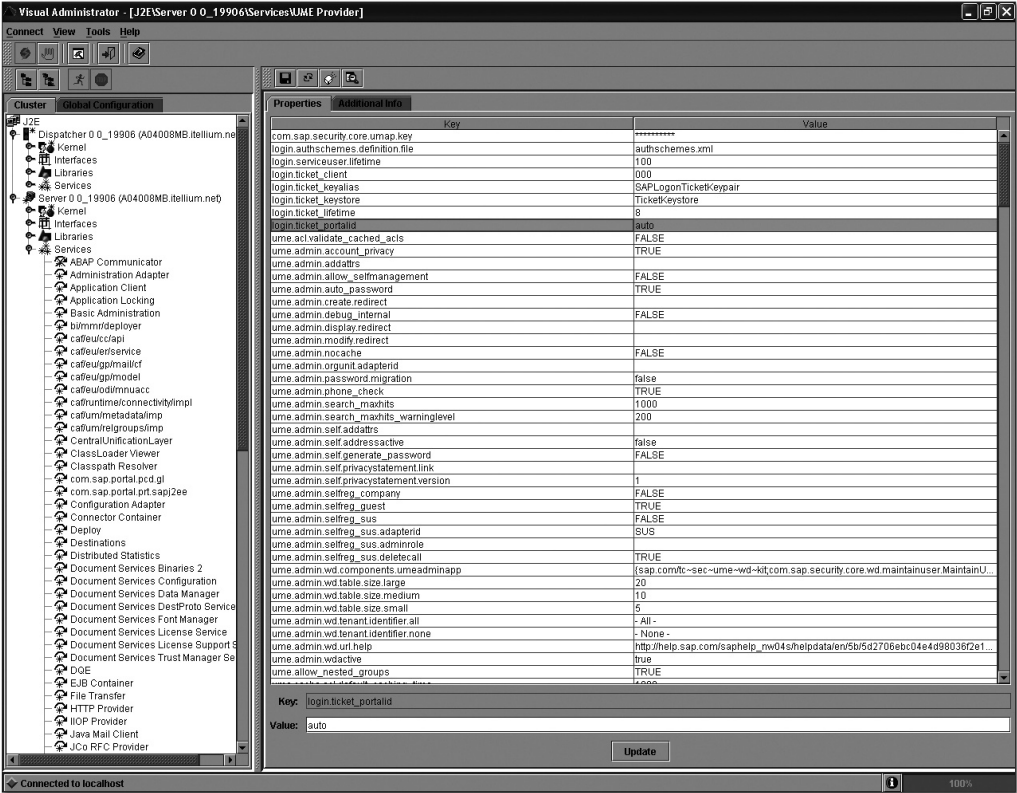


Figure 2.22 Services of Server 0 – Parameter Changes

8. You can view and select the individual services of your portal that are running on this server node to perform configuration options or parameter changes (see Figure 2.22). Remember that some parameter changes will only become effective after you restart the server.

Because this is a very powerful tool for the target group of system administrators, we will only discuss the relevant deploy service for our practical example in detail here. We recommend that you use this tool as little as possible when using your portal locally and do not change any unknown services, because these could have a quick and lasting effect on the availability of your local portal.

## 2.4 Setting Up the SAP NetWeaver Developer Studio

After you have installed the SAP NetWeaver Portal successfully, you should now set up the local development environment to add your own source code to the portal environment. The installer should have automatically created a link to the SAP NETWEAVER DEVELOPER STUDIO on your desktop.

### Starting the SAP NetWeaver Developer Studio

1. Start the SAP NetWeaver Developer Studio by double-clicking the desktop symbol. The first loading may take a few seconds. After you start the Developer Studio successfully, it should appear on your screen.
2. To configure the Developer Studio for use in the portal, select the WINDOW • PREFERENCES menu function, as shown in Figure 2.23. You go to the configuration dialog box shown in Figure 2.24.
3. Select SAP J2EE ENGINE from the left tree structure, followed by the SAP J2EE ENGINE IS INSTALLED ON REMOTE HOST radio button, and enter your host name in the MESSAGE SERVER HOST field and port "3601" in the MESSAGE SERVER PORT field. This port is set during the standard installation (instance number 00). Click the OK button, and return to the main dialog box of the Developer Studio.

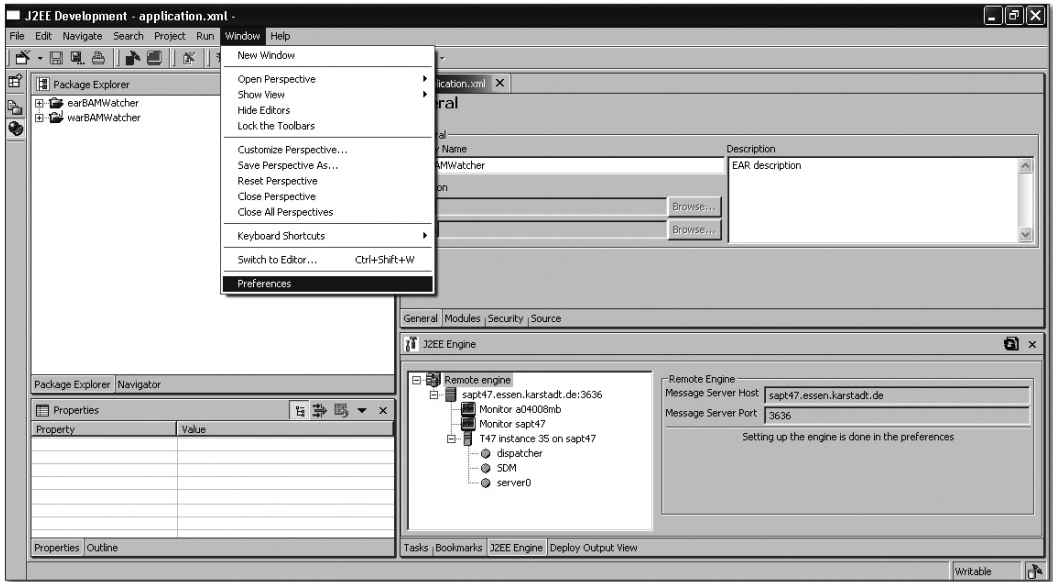


Figure 2.23 SAP NetWeaver Developer Studio

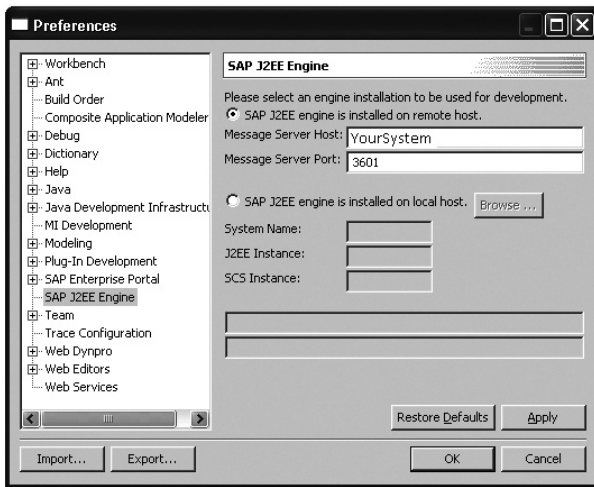
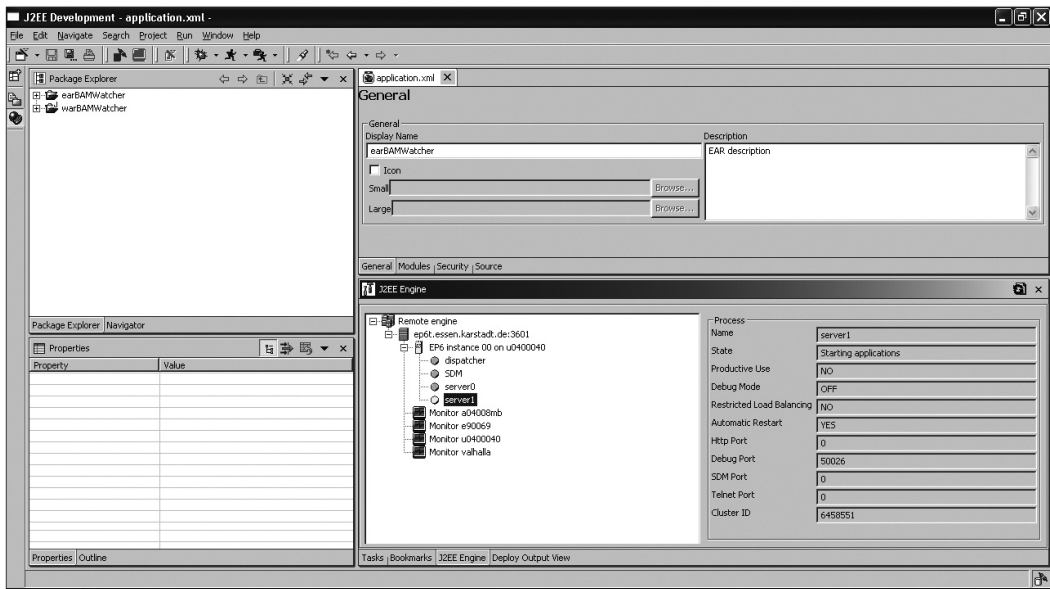


Figure 2.24 Configuring the SAP NetWeaver Developer Studio Environment

4. To test that the Developer Studio has connected successfully to your portal, select the J2EE ENGINE tab. If your dispatcher node and server

node now appear in the overview, as shown in Figure 2.25, you have created a successful connection to your portal.



**Figure 2.25** Connecting the SAP NetWeaver Developer Studio to the Portal

5. You can right-click to restart your portal components at any time from the connection overview shown in Figure 2.25. In the following section, we describe in detail how you can use the Developer Studio to develop your own portal components and transfer them to the portal.

## 2.5 Deployment Tools for the Portal

You can use different options to transfer your own component (for example, iViews) to the J2EE stack of your portal. One option is to deploy components normally using the SAP NetWeaver Developer Studio. Other options include the remote GUI of the Software Deployment Manager (SDM), the Service DEPLOY of the Visual Administrator, and the Deploy tool. In this section, we want to deal in particular with the last three tools mentioned.

## 2.5.1 Remote GUI of Software Deployment Manager

The SDM (Software Deployment Manager) server is a server component for managing and installing software components. It is primarily used for importing SCA and SDA files from SAP and represents an interface of the Developer Studio for the deployment process. You can use remote GUI to establish a tool-based connection to the Software Deployment Manager to perform manual deployments.

SDM server and remote GUI for deployments

The remote GUI of the SDM is located in the *installation drive:\usr\sap\J2E\JCO0\SDM\program* directory on your installation drive. This folder contains the *remoteGui.bat* file.

1. Start this file on your host. Like in the Visual Administrator, a local Java frontend starts.
2. A login screen appears with input parameters for the connection (see Figure 2.26). As you can see, you must enter the password you were assigned during the installation. You can leave the USER DESCRIPTION field empty.



**Figure 2.26** Connection Parameters of SDM Server or Client

3. Enter the server name of the portal in the HOSTNAME field, enter "50018" as the port (default port during the installation with instance

number 00) in the PORT field, and click the LOGIN button. Note that only one administrator at a time can log in to the SDM. Three incorrect password attempts will cause the SDM server to shut down automatically.

4. After a successful login, you go to the initial screen of the SDM client (see Figure 2.27).
5. On the SDM REPOSITORY tab, you will be able to see the components already installed on your portal server and can display detailed information by selecting a component in the tree structure on the left.
6. On the DEPLOYMENT tab, you can transfer different components directly to your system using the Software Deployment Manager. The UNDEPLOYMENT tab enables you to release components again that you no longer need. A LOG VIEWER for the SDM server rounds off the service offer of this small tool. Because this tool is mainly used by system administrators, we will not discuss it in any further detail here.

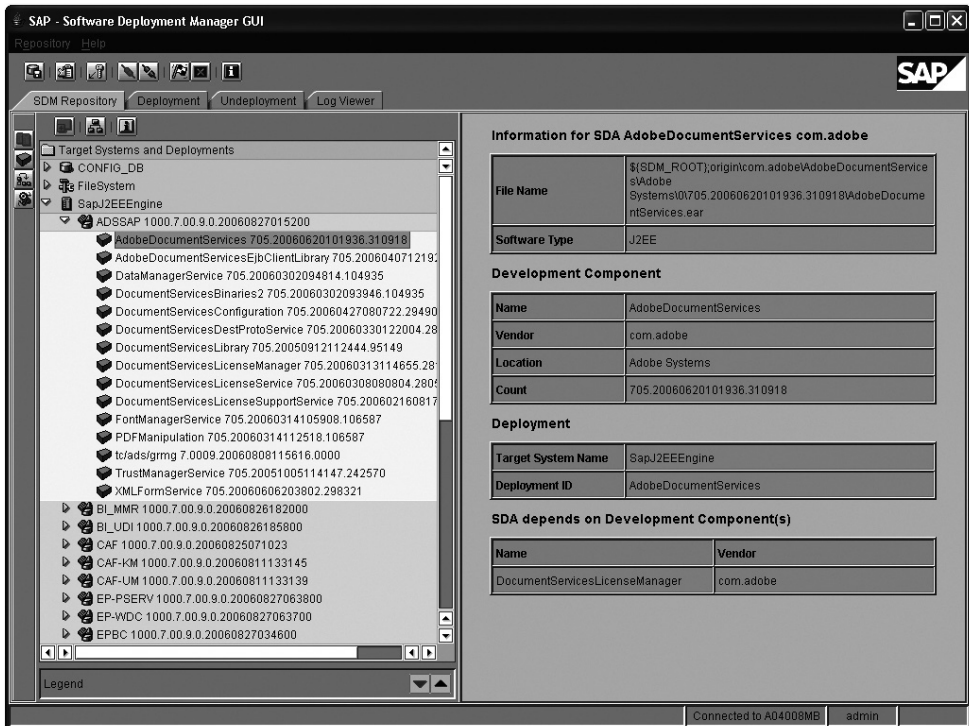


Figure 2.27 Initial Screen of the SDM Client



## 2.5.2 Deploy Tool

The Deploy tool is another direct deployment interface for the portal. You will probably rarely use this tool; because it is a somewhat inconvenient option for deploying your own components, we will only describe it briefly. You will find this tool on the installation drive via the *installation drive:\usr\sap\J2E\JC00\j2ee\deploying* path. This folder contains the *Deploytool.bat* file.

Deploy tool

1. Start this file. A Java-based client starts on your local host again. A dialog box like the one shown in Figure 2.28 appears.

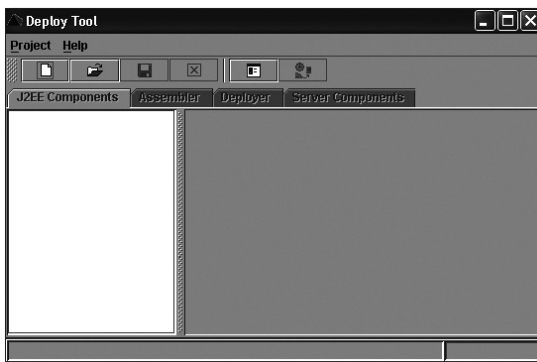


Figure 2.28 Start Menu of Deploy Tool

2. Select the NEW PROJECT function from the menu bar and select a corresponding project name. You go to a new menu system (see Figure 2.29).

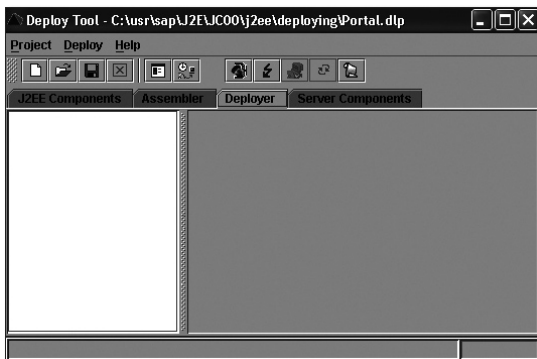
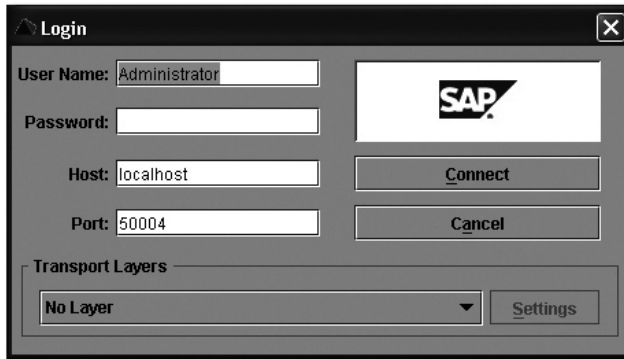


Figure 2.29 Deploy Selection in Deploy Tool

3. To deploy an existing local software component (for example, an EAR file), select the `DEPLOYER` function from the main navigation bar. A lightning icon called `CONNECT` appears in the icon bar.
4. Click this lightning icon to establish a connection to your J2EE stack. A familiar login screen appears (see Figure 2.30).



**Figure 2.30** Login to J2EE Stack

5. Enter "Administrator" as the `USER NAME`, enter the host name of your portal in the `HOST` field, enter "50004" as the port, and then click the `CONNECT` button.
6. After you have connected to your portal server, select the icon beside the lightning icon to upload an EAR file.
7. After you have chosen an EAR file, you can upload it to your portal server by selecting the EAR file, right-clicking, and choosing the `DEPLOYMENT • DEPLOY EAR` function from the context menu, as shown in Figure 2.31.

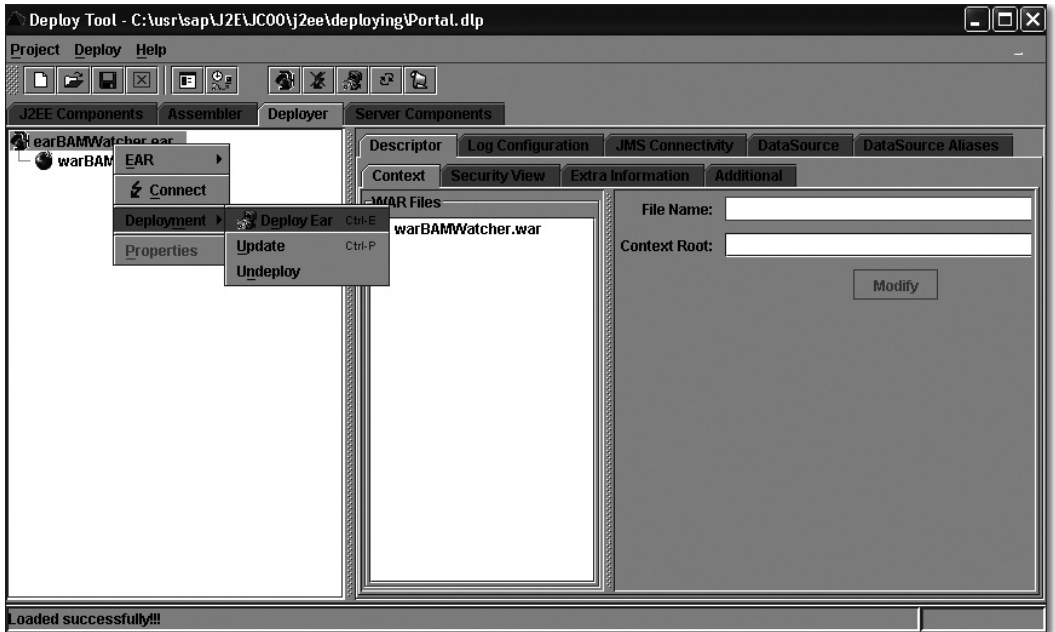


Figure 2.31 Deploying an EAR File Using the Deploy Tool

8. After you have successfully uploaded the EAR file, the Deploy tool will prompt you to verify whether you also want to start the uploaded software component on your portal (see Figure 2.32). Select YES here if you want to test the components.

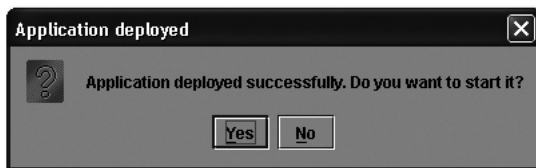


Figure 2.32 Starting the Portal Component

The Deploy tool provides a very powerful selection of deployment options. We have only shown a small sample of the functions here. This tool is used mostly by system administrators and is not part of the daily tools you use for deploying your own software components.

### 2.5.3 Deploy Service in Visual Administrator

Another option is to deploy software components directly in the Visual Administrator.

#### Deployment using the Visual Administrator and Deploy Service

1. As already explained, start the Visual Administrator on the local host and log on to the J2EE stack of the SAP NetWeaver Portal with the Visual Administrator.
2. Then expand the tree structure under SERVER 0 called SERVICES and click the DEPLOY service name. Corresponding function options like the ones shown in Figure 2.33 are displayed:

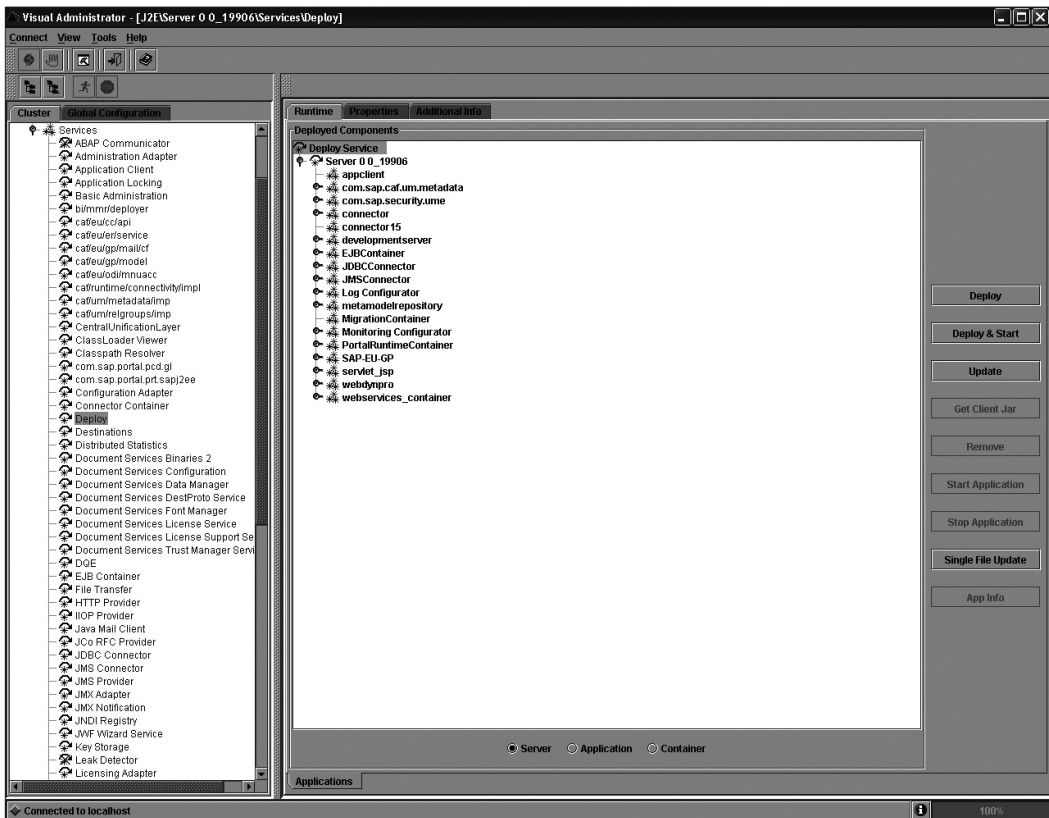


Figure 2.33 Deploy Service of Visual Administrator

► **Deploy**

You use the `DEPLOY` function to install a new component similar to the Deploy tool if you don't want to start this component automatically.

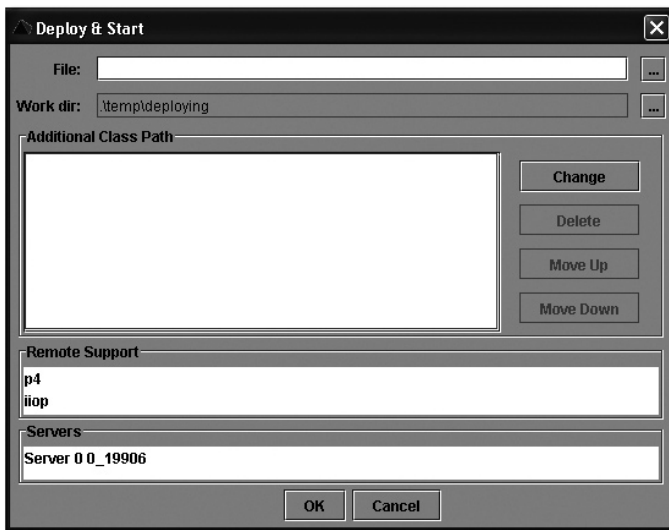
► **Deploy & Start**

Select the `DEPLOY & START` function if you want to install and immediately set the component to "running."

► **Update**

The `UPDATE` function is provided to update a component that already exists.

3. Similar to the Deploy tool example, you will now use a small example to transfer an EAR file to the system; click `DEPLOY & START` for this purpose.
4. As shown in Figure 2.34, a search template appears, where you select the component to be installed. Select an EAR file on the local host here.



**Figure 2.34** Selecting an EAR File – Visual Administrator Deployment

5. After you have selected the EAR file, click the OK button to load the EAR file into the portal and start it there.

6. A final confirmation prompt appears. Note the small APPLICATION OVERWRITING CHECK checkbox in this dialog box (see Figure 2.35). This checkbox checks whether the components are already in the system, and, if so, another confirmation prompt is issued beforehand. We recommend that you always activate this checkbox by default.

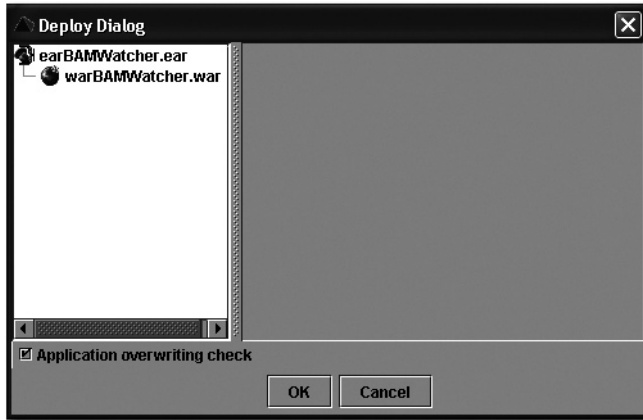


Figure 2.35 Confirming the Deployment

7. After you click the OK button, the EAR file is installed on the portal server.

## 2.6 SAP Communities and Online Help

If this brief introduction into the topic of system tools has not been sufficiently detailed, you will find additional help and documentation in the SDN.

### Brief overview

By now, the SAP Developer Network (SDN) has a million members from over 200 countries. Through the SAP Developer Network, all members of the SAP ecosystem—customers and partners, such as independent software vendors (ISVs), system integrators, developers, and consultants—can cooperate and exchange information or download software. You access the SAP Developer Network using the <http://sdn.sap.com> URL. After you call the URL, you go to the SDN home page, which displays a structure similar to the one shown in Figure 2.36.

The screenshot shows the SAP Developer Network (SDN) website. At the top, there's a navigation bar with links for 'Register - it's free', 'How to Contribute', 'Site Index', and 'Languages'. A search bar is positioned on the right. Below the navigation bar, there's a 'Member Login' section with fields for 'User ID or Email' and 'Password', and a 'Remember me' checkbox. To the left of the main content is a sidebar with a tree structure of categories: 'Getting Started', 'Enterprise SOA', 'SAP NetWeaver Capabilities' (with sub-items like User Productivity, Information Management, Business Process Management, etc.), 'SAP NetWeaver Product' (with sub-items like Main Releases, SAP NetWeaver Composition Environment, etc.), and 'Partners and IDIs'. The main content area is titled 'Inside SDN' and features several articles with images and titles: 'Enterprise SOA glossary (PDF 72 KB)', 'SAP NetWeaver 7.0 Java and ABAP Trial Version on Linux - VMware Edition', and 'Running Open Source Frameworks on SAP NetWeaver Composition Environment (PDF 358 KB)'. There's also a 'Recent Features' section and a 'What's New' section. On the right side, there are promotional banners for 'SAP TechEd 2008' and 'SAP Developer Challenge'. The bottom of the page includes contact information and a 'Powered by SAP NetWeaver' notice.

Figure 2.36 Setting Up the SAP Developer Network

There is a login area to this community on the upper left of the page. You can log on here with your SAP user ID or create a corresponding new user; you will already be familiar with this step from downloading the portal installation files.

A tree structure underneath the login frame shows the areas of primary interest for the SAP NetWeaver Portal. You will find these areas under SAP NETWEAVER CAPABILITIES • USER PRODUCTIVITY • PORTAL AND COLLABORATION. All current topics, presentations, blogs, and so on for the SAP NetWeaver Portal are contained in this segment. A forum for exchanging information about problems and so on rounds off the SDN offer; you can also download source code samples here. In this area, you will also

find a description and download option of individual content packages for the portal (see Figure 2.37).

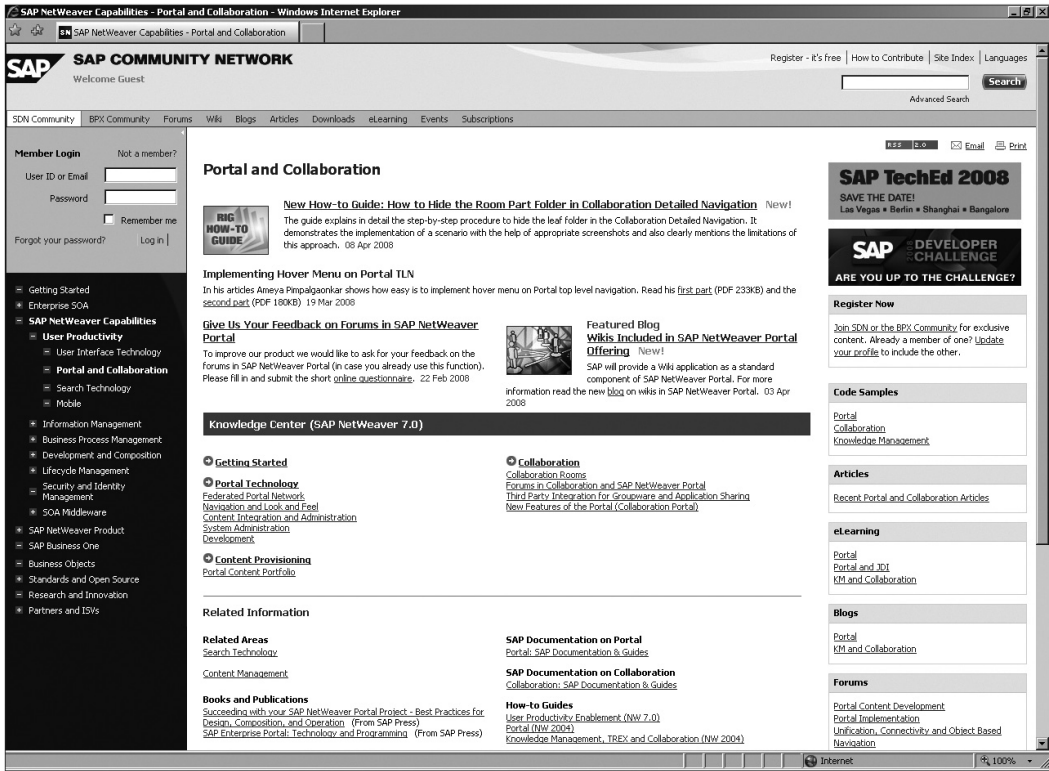


Figure 2.37 SAP Portal Content Portfolio

After the installation and a brief overview of the system tools available for administering the portal, the following chapters will deal with the content of the portal.



# Index

&VARIABLE\_SCREEN=X;VARIABLE\_SCREEN, 97

## A

---

ABAP, 374, 377, 379  
Access denied, 70, 124  
Access permission, 66, 340  
ACL (Access Control List), 147, 155  
Active Directory, 125, 135, 232  
Administration, 33  
Administrator, 132  
    *role, 132*  
Alias, 123, 345  
Anonymous user, 107  
    *group, 108*  
API, 362, 363  
Application, 354, 370, 372, 380, 382, 385, 396, 397, 398  
    *name, 102*  
    *namespace, 92, 94*  
    *parameter, 92, 94, 95*  
Approach  
    *descriptive, 353*  
    *visually generic, 353*  
Architecture, 352  
ASCII, 82, 272  
Attribute, 399, 400, 403  
Auction, 59, 60  
Authenticated Users, 106  
Authentication, 143, 147  
Authorization, 70  
Authorization check, 70  
Automation, 351, 352, 365

## B

---

Bandwidth  
    *low, 178*  
BAPI (Business Application

Programming Interface), 352, 379  
Basic maintenance, 31  
Bean creation wizard, 360  
BEx Analyzer, 97  
BEx query string , 95  
BigVendor, 374, 378  
Binding, 386  
Branch, 71  
Branding  
    *image, 260, 284*  
    *text, 260*  
Browser  
    *error icon, 147*  
    *title, 173*  
BSP (Business Server Page), 89  
    *alias, 90*  
    *alias iView, 92*  
    *iView, 89, 91*  
Business layer, 350  
Business logic, 361, 365, 368, 374  
Business process, 349, 352  
Button, 391  
Buyer, 347, 349, 350  
Buying, 59, 60, 71, 118  
Buying portal, 15  
Buying process, 16

## C

---

Call, 378  
Cardinality, 388, 399  
Cause of error, 361, 362  
Certificate, 147, 153, 159  
    *certificate store, 147, 153, 155, 159, 165*  
    *expiry, 156*  
    *transfer, 159*  
    *trusted, 159*  
    *verify.der, 147, 154, 155, 159, 165, 166*  
Character map, 272

- Character set, 286
  - Checkbox, 285
    - check*, 289
  - Class, 358, 361, 363, 368
    - AbstractPortalComponent*, 256, 258, 294
  - Client Proxy, 376
  - Collection
    - master rule*, 181
  - Color conversion, 172
  - Color scheme, 95, 168, 169
  - Column number, 73
  - Company, 132
    - boundary*, 351
    - company concept*, 107, 134, 139
    - logo*, 59, 171, 192
    - STPD\_*, 134, 139
    - centering*, 173
  - Component, 256, 297, 299, 323, 398
    - masthead*, 321
  - com.sap.portal.appintegrator.sap, 103
  - Condition
    - complex*, 184
  - Config tool, 140, 229, 231, 260, 275
  - Configuration, 354
    - parameter*, 283
    - setting*, 297, 299
  - Connection
    - trusted*, 155
  - Connector, 99, 119
    - external*, 188
  - Content
    - export*, 238
  - Content administration, 57, 61
  - Content area, 59
  - Content element, 61
    - create*, 63
  - Context, 379, 394
    - element*, 387
    - node*, 400, 403
    - variable*, 393
  - Context menu, 368, 388, 401, 402
  - Controller, 383, 398, 399
  - Cookie, 348
    - cross-domain cookie*, 148, 150
    - MYSAPSSO2*, 147
  - Copy, 65, 68
  - Create new, 79
  - Creation, 380
  - CSS (cascading stylesheets), 252, 287, 314, 320
    - file*, 170
    - knowledge*, 173
  - Customer development, 255, 352
  - Customer namespace, 92, 94
  - Customizing, 252, 260, 277
  - Cut, 65
- ## D
- 
- Database, 350
  - Data binding, 403
  - Data retention, 350
  - DataSource, 400, 403, 407, 410
    - configuration*, 234
  - Data transport, 385
  - Default Setting, 328
  - delegated\_user\_admin, 106, 107
  - Delete, 65
  - Delta link, 67, 72
  - Deploy, 369, 396
    - Service*, 50
    - tool*, 47
  - Deployment, 273, 335
    - option*, 273
  - Design, 62, 181
  - Desktop, 62, 168, 180, 183
    - inner area*, 175
    - innerpage*, 175
  - Detailed navigation, 59, 60, 72, 73, 176, 188, 199, 204
  - Determining factors, 18
  - Developer tool, 150
  - Development, 348, 352
    - environment*, 352, 375
    - mode*, 258
    - package*, 374
    - scenario*, 348
  - Directive, 284, 288
  - Directory, 354
  - Directory service, 351
  - Display Rule, 180
  - Domain, 148

Download, 238, 261, 262, 346  
 Download Manager, 27  
 DTO (Data Transfer Object), 357, 361  
 Dummy load, 138

## E

---

Eclipse, 257  
 Edit mode, 276  
 EJB (Enterprise JavaBean), 355, 356, 360, 361, 368, 369  
   *wizard*, 361  
 E-mail, 130, 227, 347, 394  
   *notification e-mail*, 227  
 End-user, 67  
   *guest*, 107  
 Enterprise Application Project, 364, 369  
 Enterprise Portal Perspective, 257  
 Enterprise Service Proxy, 375  
 Entity bean, 360  
 Entry point, 83  
 EPA file, 238  
 Error message, 280  
   *missing permission to execute* , 107  
 EvaluateTicketLoginModule, 161  
 Event, 404  
 Exercise  
   *practical*, 69  
 Export, 135  
 Export dialog box, 273  
 Export file, 135, 137  
 External facing portal, 20, 66, 167  
 Extranet, 16

## F

---

Field  
   *end user*, 106  
   *End User*, 142  
   *role assigner*, 107  
   *Role Assigner*, 142  
 File  
   *authschemes\_custom.xml*, 278  
   *authschemes.xml*, 275  
   *com.sap.portal.navigation.lightdetailednavigationtree.pa*, 346  
   *com.sap.portal.navigation.lighttoptoplevel.par*, 345  
   *com.sap.portal.navigation.masthead.par*, 321, 345  
   *com.sap.portal.navigation.pagetoolbar.par*, 346  
   *com.sap.portal.navigation.toolarea.par*, 345  
   *com.sap.portal.runtime.logon.par*, 345  
   *com.sap.portal.support.browse.default*, 262  
   *logonLabels\_de.properties*, 271  
   *logon\_proxy.txt*, 288  
   *portalapp.xml*, 254, 282, 283, 296, 297, 323, 325, 329  
   *sapcrypto.dll*, 166  
   *umLogonPage.jsp*, 288  
   *verify.pse*, 165, 166  
   *web.xml*, 182  
 File system, 258, 261, 267  
 Filter, 266  
 Folder, 57, 62, 285  
   *classes*, 282  
   *dist*, 282  
   *ID*, 65  
   *jsp*, 259  
   *lib*, 266, 267, 282  
   *name*, 64  
   *pagelet*, 258  
   *PORTAL-INF*, 264, 282  
   *private/classes*, 282  
   *private/lib*, 269, 282  
   *src.api*, 281  
   *src.core*, 281  
   *structure*, 281  
   *themes*, 170  
   *virtual*, 66  
 Form, 349, 397, 401  
 Form check, 290  
 Form value, 348  
 Framework, 62, 168, 174, 180, 181, 338  
   *default*, 174  
 Full\_Page, 75, 84  
 Functions, 362, 365

**G**

---

Generator, 352, 353, 355, 360, 368, 375  
 Get parameter, 82  
 Groups, 125, 127, 132, 134, 141, 168, 182  
   *Guest\_User\_Company*, 140  
 Guest, 89, 108  
 Guided Procedures, 35

**H**

---

Header area, 59  
 Help, 363  
 Help link, 176  
 Hierarchy, 308  
 How-to guide, 163, 182  
 HTML (Hypertext Markup Language), 252, 332, 348  
 HTTP (Hypertext Transfer Protocol)  
   *authentication*, 145  
   *destination*, 376

**I**

---

ID  
   *change*, 65  
 IDE (Integrated Development Environment), 352  
 Identity management, 37  
 iFrame, 59, 175  
 Import, 60, 136, 242, 263, 322  
   *dialog box*, 267  
 Import area, 59  
 Import structure  
   *group*, 138  
   *role*, 138  
   *user*, 138  
 Inheritance, 67, 69, 105, 161  
 InputField, 390  
 Installation, 26  
 Interactive form, 403  
 Interface, 373, 388  
   *parameter*, 351  
   *SAI\_TOOLS*, 375

Internet Explorer, 262, 292  
 IP address, 348  
 IPortalComponentRequest, 314  
 IPortalComponentResponse, 314  
 ITS (Internet Transaction Server), 99, 121  
   *direct call*, 100  
   *Web GUI*, 99  
 IUser, 363, 365, 393  
 iView, 57, 62, 67, 76, 283, 320, 340  
   *create*, 306  
   *generic*, 103  
   *language*, 89  
   *layout*, 75  
   *masthead*, 176  
   *navigation iView*, 293  
   *new*, 331  
   *SAP transaction*, 97  
   *template*, 77, 79

**J**

---

J2EE  
   *Engine*, 31  
   *process*, 37  
   *wizard*, 360  
 JARM (Java Application Response Time Measurement), 34  
 Java, 252, 353, 358  
   *library*, 266  
   *servlet*, 76  
 java.dialogbox, 84  
 JavaScript, 252  
   *activate*, 292  
   *deactivate*, 291, 292  
 JSP (JavaServer Page), 252, 257  
   *import*, 315  
   *page*, 283, 293, 333

**K**

---

Key tool, 165

**L**

---

Language, 89  
 Language setting, 270  
 Layout, 73, 168, 175, 287, 314  
 LDAP (Lightweight Directory Access Protocol), 125, 225, 232, 354  
   *connection*, 232  
   *group*, 135  
 Library, 282, 322, 344, 364, 406  
   *com.sap.portal.runtime.logon\_api.jar*, 268  
   *missing*, 266  
   *SapSecuLib*, 164, 165  
   *umelogonbase.jar*, 268, 270  
 Light framework, 73, 178, 255, 317  
 Link text, 333  
 Login  
   *accept\_sso2\_ticket*, 155  
   *create\_sso2\_ticket*, 155  
   *method*, 123, 158  
   *page*, 260  
   *password\_change\_for\_SSO*, 155  
   *structure*, 284  
 Logo, 167, 229, 230

**M**

---

Mail server, 348  
 Main rule, 65, 168, 180, 181, 243, 317, 319  
   *IF expression*, 181  
   *THEN expression*, 183  
 Management, 59  
 Mapped password, 82  
 Mapped user, 82  
 Mapping, 385  
 Master Page, 402  
 Menu structure, 67, 68, 130  
 Menu tree, 70, 199  
   *joint*, 113  
   *merge ID*, 113  
 Merge, 84  
   *ID*, 113

*parameter*, 113  
   *priority*, 114  
 Message-driven bean, 360  
 Meta model, 379  
 Method  
   *onActionsSubmitPDF*, 404  
   *wdDoInit*, 396  
 Model, 381  
   *class*, 382  
   *context*, 385, 386, 387, 388  
   *data*, 398  
   *import*, 381, 382  
   *proxy*, 381, 384  
 Module, 355  
 Monitoring, 33  
 Mozilla Firefox, 150, 263, 292  
   *web developer*, 150  
 Multilingual capability, 259, 272  
 MVC (Model-View-Controller), 258  
 MyCompany, 397, 398, 409

**N**

---

Name, 84  
 Namespace, 147  
 Navigation, 130, 176  
   *hierarchical*, 60  
   *invisible*, 84  
   *node*, 308  
   *role-based*, 57  
   *setup*, 58  
   *structure*, 58  
   *tree*, 293, 308  
 New  
   *system*, 118  
 Node, 388, 399, 400

**O**

---

Object, 357, 408  
 Order confirmation, 349  
 Original component, 252

## P

---

- Package, 357, 383
  - create*, 357
  - Explorer*, 264
  - interface*, 375
- Page, 57, 62, 67, 73, 84
  - layout*, 339
  - page geometry*, 73
- Palette, 402, 403
- Parameter, 29, 290, 313, 320, 348
  - category*, 325
  - post*, 145
  - read*, 329
- PAR file, 79, 242, 254, 261, 264, 267, 281, 299, 345
  - com.sap.nw.wpc.runtime*, 214
  - com.sap.portal.runtime.logon.par*, 262
  - import*, 80
  - list*, 345
- Password rules, 226
- Paste, 65
- PCD (Portal Content Directory), 337, 340
- PDF (Portable Document Format), 397, 398, 399, 400
- Permission, 104, 123, 195, 244
  - concept*, 19
  - dialog box*, 105
  - iView*, 108
  - to execute*, 124
- Persistence, 360
- Persistence layer, 350, 352
- Personalization, 73, 88, 146, 181, 298
  - user password*, 104
- Plausibility check, 333
- Port, 99, 100, 102, 230, 376, 377
- Portal
  - application*, 256, 294, 343
  - archive*, 254
  - basic configuration*, 59
  - certificate*, 155
  - component*, 79, 281, 343
  - content*, 57, 61
  - define*, 296
  - desktop*, 317
  - favorite*, 176
  - header*, 255, 317, 320, 335, 338
  - masthead*, 175
  - navigation*, 19
  - role*, 67
  - server*, 371
  - service*, 344
  - structure*, 320
- Post method, 82
- Post parameter, 82
- Prefix, 376
- Preview, 285, 287, 308, 338
- Priority, 84
- Programming, 364
- Project, 369
  - folder*, 66, 78
  - new*, 294
  - property*, 271
- Property, 409
- Property category, 82
  - advanced*, 87
  - availability*, 87
  - connector*, 119
  - display n size*, 75
  - display - size*, 84
  - Drag&Relate*, 86, 96
  - help*, 88
  - information*, 84
  - Internet Transaction Server*, 100, 121
  - load (cache)*, 87
  - monitoring*, 88
  - navigation*, 83
  - tray*, 85
  - Web Application Server*, 91, 95, 120
  - Web Dynpro*, 102
  - web page area*, 89
  - Web Page Composer*, 216
- Protocol, 351
- Proxy, 375, 376, 381, 382, 384
  - class*, 376
- PSE file, 166
- Public key technology, 154

## Q

---

- Quick link, 184, 185, 244, 338
  - anonymous*, 108

## R

---

Recursion, 309, 313  
 Reference, 363, 364, 370, 371  
 Registering, 351  
 Registry, 298  
 Relaxing, 149  
 Remote GUI, 45  
 Remote portal, 159  
 Report, 377, 378  
 Resource, 259, 295  
 Response e-mail address, 229  
 RFC (remote function call), 355, 375, 388  
 Right, 106  
 Role, 57, 62, 66, 67, 125, 127, 130, 168, 181, 187, 204, 208  
     *delegated\_user\_admin*, 132, 134  
     *end user role*, 132  
     *eu\_role*, 132  
     *portal role*, 125, 130  
     *role assigner*, 141  
     *SAP R/3*, 130  
     *super\_admin\_role*, 132  
     *user\_admin\_role*, 132  
 RPC (remote procedure call), 348  
 Rule set, 62  
 Runtime error, 147

## S

---

Sample call, 377, 379  
     *code*, 392, 408  
     *model*, 353, 355  
 sapbw, 118  
 SAP certificate, 153  
 SAP ERP, 352  
 SapGenPse, 165  
 SAP GUI, 97, 99, 118, 350  
     *for Windows*, 99  
 SAP Help Portal, 154, 166, 234  
 SAP Interactive Forms by Adobe, 397  
 SAP logon cookie, 144  
 SAP logon ticket, 123, 147, 148, 158, 164  
 SAP NetWeaver, 352  
 SAP NetWeaver Administrator, 31  
 SAP NetWeaver Developer Studio, 30, 257, 352, 353, 355, 363, 368, 369, 371, 400, 406  
 SAP NetWeaver Portal, 353, 354  
     *configuration*, 33  
     *page reproductions*, 174  
 sapr3, 118  
 SAP R/3, 377  
 SAP Service Marketplace, 163  
 SAP system, 117  
     *SAP\_R3\_Dedicated*, 118  
     *SAP target system*, 154  
 SAP User Administration, 232  
 Screen field, 393  
 SDM (Software Deployment Manager), 45  
 SDN (SAP Developer Network), 52, 149, 182  
 Search result  
     *number*, 140  
 Security  
     *settings*, 226  
     *store*, 161  
     *zone*, 219  
 Self-registration, 139, 140, 229  
 Self-service, 16  
 Separator, 334  
 Serializable, 358  
 Server  
     *environment*, 348  
     *program*, 348  
     *software*, 349  
 Service, 256, 298, 361, 369  
 Session, 408, 409  
 SessionBean, 363  
 Session management alert, 152  
 Setting, 382  
 SharingReference, 300  
 Single sign-on, 17, 94, 118, 143, 150, 155, 158, 164  
     *error message*, 157  
 Sitemap, 17, 255, 293, 299  
     *header*, 305  
     *link*, 320, 337  
 Size restriction, 376  
 Smallvendor, 397

SMTP (Simple Mail Transfer Protocol)  
*server*, 227

SOAP, 351

SOA (Service-oriented architecture), 352

Software development, 348

Software project, 351

Sort priority, 84

Source code, 299, 361, 364  
*view*, 285

Source of error, 266

Special characters, 272

Stateful session bean, 360

String, 82

Subprogram, 348

*super\_admin\_role*, 106

Supplier, 59, 60

System, 62, 92, 94, 95, 117  
*administration*, 225  
*alias*, 118, 123, 244  
*ID*, 147  
*landscape*, 117, 144

## T

---

Tab navigation, 59, 187

Tag, 259  
*meta*, 286  
*navigation tag library*, 304  
*property*, 298

Tag library, 259, 300  
*descriptor*, 300, 302  
*integrate*, 304  
*navigation*, 293, 304

Target directory, 264, 294

Target server, 274

Target system, 70, 143, 147  
*changing the password*, 147

Technology platform, 348

Terms of use, 255, 285

TextView, 390

Theme, 168, 180, 181  
*Editor*, 168, 251  
*template*, 62

Third-party application, 144, 166

Third-party system, 163

Three-tier architecture, 349, 350, 352

Title, 270

Top-level navigation, 175

Transaction, 70, 99, 100, 375  
*LPCONFIG*, 376  
*RZ11*, 155  
*SE80*, 375  
*SICF*, 100  
*STRUST*, 158  
*STRUSTSSO2*, 155  
*SU01*, 233

Translation, 109  
*translation package*, 109  
*translation worklist*, 109  
*worklist translation*, 110

Transport, 124, 237  
*mechanism*, 20  
*package*, 238

Travel planning, 59, 60, 71

Trust configuration, 160

Trusted system, 143, 159  
*trusteddn1*, 161  
*trustediss1*, 161  
*trustedsys1*, 161

## U

---

UDDI (Universal Description, Discovery, and Integration), 351

UME (User Management Engine), 225, 363, 364, 374, 375, 376, 379, 381, 393, 394, 395  
*definition*, 140  
*library*, 371  
*parameter*, 229, 260  
*UME API*, 363, 370  
*ume.tpd.companies*, 139

Unable to lookup System, 123

Unicode, 82, 272

Unpack, 267, 270

URL (uniform resource locator)  
*alias*, 148  
*destination*, 376  
*domain*, 164  
*encoding*, 234



- iView*, 76, 79, 81, 100, 145
  - parameter*, 81
  - short*, 184, 308
- Use access, 375
- Useful, 365
- User, 127, 168
  - administration*, 19, 125, 232
  - common*, 70
  - DTO*, 361, 365
  - ID*, 147
  - management*, 122, 353
  - uniqueness*, 233
- User mapping, 82, 144
- User request, 397, 398, 405, 406, 408
- UTF-8, 286

## V

---

- Variable
  - web path*, 288
- Vendor, 349, 362, 365, 366, 374, 378, 380, 397
- View, 385
- View mode, 276
- Visibility, 282
- Visual Administrator, 39, 160, 229

## W

---

- Web administration interface, 30
- Web application, 350
- Web browser
  - form field*, 349
- Web component, 350
- Web content, 16, 190
- Web Dynpro, 101, 352, 392, 393, 397
  - Java application*, 80

- Web filter, 164
- Web project, 369
- Web server, 348, 349
- Web service, 351, 352, 355, 360, 368, 369, 371, 373, 374, 375, 376, 378, 379, 381, 393, 394
  - proxy*, 375, 376, 377
- Welcome page, 184
- Wizard, 362, 369, 402
- Workset, 57, 62, 67, 68, 71, 187
  - assignment*, 72
- Workspace, 30
- WPC (Web Page Composer), 17, 187
  - article*, 193
  - cross-site content*, 190, 192
  - external connector*, 212
  - integrate web page*, 214
  - layout*, 201
  - link navigation*, 208
  - navigation*, 204
  - navigation.wpc*, 208
  - permission*, 195, 219
  - publish*, 203
  - publish navigation*, 207
  - role assignment*, 188
  - site content*, 192
  - sites*, 190
  - UME actions*, 219
  - web page*, 199
  - wpc\_editor\_role*, 188, 189
- WSDL (Web Services Description Language), 351, 374, 375, 376, 381

## X

---

- XML (Extensible Markup Language), 252, 362