

Reading Sample

Get to know SAP! Explore its operational and business features and then dig into what makes SAP so distinct from other software vendors and systems you've encountered, from the integration of SAP applications to the lifecycle of an SAP system.



"What is SAP?"



Contents



Index



The Authors

Michael Doane

The SAP Blue Book

190 Pages, 2012, \$29.95

ISBN 978-1-59229-412-1



www.sap-press.com/3014

2 What Is SAP?

As any good SAP-watcher knows, no moss grows under those munchkin feet in Walldorf, Germany, and Palo Alto, California, where SAP research and development takes place. Even as I type this paragraph at 120 words per minute, ABAP code is coursing through SAP pipelines and wrapping itself into beta releases and *SAP.com* announcements. No printed resource could possibly keep up with a thousand bit-byte ABAP zombies, and this book will not try. Even as this book goes to print, new SAP releases will render any description of the product somewhat outdated.

This first section of this chapter covers some of the basics of SAP, the company, and its array of products. If you already are familiar with the basics, skip to the next section.

2.1 Reading with the SAP Alphabet

Within the world of SAP, there are many variations on the meaning of the letters S-A-P.

To a concerned project manager, "Say A Prayer." To a disgruntled customer, "Shut Up And Pay." To the competition, "Sulk And Pout." To an SAP consultant, "Suitcase And Passport."

Ess Ay Pee is how it is pronounced, not "sap," as in "rap," "cap," or "slap." Your computer hardware wasn't made by "ibem," but IBM. Eds are not casual Edwards when you are talking about Electronic Data Systems (EDS). Anyway, what SAP really stands for is Systems, Applications, and Products (loose translation).

SAP AG, headquartered in Walldorf, Germany, is the supplier. The core ERP product we will be referring to through the remainder of this book is collective (SAP ERP, SAP Business Suite, SAP

NetWeaver). If you are at a point at which those distinctions matter, you may want to pass by some parts of this book.

Just to be clear, the world at large still refers to both the company and the product as SAP, as in “We decided to implement SAP because of its integrated database.”

Beyond these distinctions, there is a vast world of initial-speak in the world of SAP, beginning with the applications. Financials (FI) are referred to as Eff Eye, Sales and Distribution (SD) as Ess Dee, and Materials Management (MM) as Em Em.

Consider some of the SAP components that are routinely abbreviated in Table 2.1. You’ll notice that not all short names are the exact initials of the components.

Short Name	SAP Component
FI	Financial Accounting
SD	Sales and Distribution
MM	Materials Management
PP	Production Planning
HCM	Human Capital Management
CO	Controlling

Table 2.1 SAP Abbreviations

As will be seen (to the point of distraction), the applications are tightly integrated, so initials are often glued together to better define terms. Someone working in the Process Industry version of Production Planning will be referred to as a PP-PI. If you see SD-MM, you will understand that it refers the elements of Materials Management that are integrated with Sales and Distribution.

If you are an apprentice to SAP, there is no need to learn all of the initial-speak. Through the remainder of this publication, I will make every effort to spell things out where possible.

2.2 Features of SAP

The allure of SAP software is not found in its business components alone, but in its overall features. Functional comparisons of SAP to its smaller competitors often lead to misconceptions because an apples-to-apples comparison of applications fails to take into account the enterprise-wide nature of SAP. Indeed, it is often said that competitors' packages for individual applications stack up nicely against SAP but, as discussed in Chapter 1, individual applications are less and less cogent to business as we know it.

In this section, we explore the operational and business features of SAP that have contributed to its phenomenal success and its status as the least understood business product of its generation.

Consider the following features:

- ▶ Complete suite of integrated applications
- ▶ Open systems architecture
- ▶ Global business architecture
- ▶ Transparency between SAP and PC applications
- ▶ Audit trail and data integrity controls

Let's explore each one now.

2.2.1 Complete Suite of Integrated Applications

This is by far the most alluring and powerful feature of SAP software and hinges on two operative elements: complete and integrated.

Numerous competitors offer integrated applications, but none compare to the vastness of SAP's list of business applications. Beyond core business functions (Financial Accounting, Sales and Distribution, Materials Management, etc.), SAP includes Plant Maintenance, Quality Management, Project System, Human Capital Management, Production Planning, and much, much more. Further, there are industry-specific solutions for oil and gas, chemicals, retail, and a host of other industries. SAP tries very

hard to be all things to all companies, and although it fails to supply everything under the sun, there is a continual flow of new applications, upgrades, and industry-specific bolt-ons.

What is fairly magical, however, is that all of these applications still work with a single, integrated database. The significance of this feature cannot be understated.

- ▶ Ensured data integrity
- ▶ Simplified data handling and maintenance
- ▶ No interface requirement between applications
- ▶ Transactions are updated across the board on an immediate basis. Thus, management information is up to the minute, not as of the last batch run.

SAP is not alone in providing real-time data updates, but it does stand alone in providing real-time updating in an integrated fashion throughout a complete applications suite.

When a wing nut drops on a production line, SAP hears a ping in accounting, materials management, and possibly one or two other applications.

2.2.2 Open Systems Architecture

Since the beginning of cyber time, applications have been written according to the house rules as laid down by the platform on which the software will run. Each hardware vendor used to offer a different operating system that worked with different programming languages. A company with IBM hardware that wanted to purchase software that only ran on Hewlett Packard platforms was out of luck. Other software firms have closed the gap in this regard, but SAP was the first to provide truly open systems architecture, and this fact alone fueled sales in the mid-1990s.

Large firms that have distributed their processing across disparate sites have by and large developed heterogeneous computer parks, mixing IBM with Hewlett Packard or Dell with NEC Global.

SAP's use of an open systems architecture eliminates the platform question because it functions on several different platforms. These include Hewlett Packard, IBM, and various other platforms. Further, clients have a choice of database and operating systems.

The immediate phenomenal success of SAP R/3 would have been seriously compromised if the software had not been built with such open systems architecture. Acquiring and implementing SAP software is costly enough; if clients are also required to change over entire computer parks, the pill may be too large to swallow.

The "portability" of SAP software will also have an effect on the lifecycle of your system. As your company expands or contracts, the hardware base will expand or contract, but you will be able to jiggle SAP into any size environment without having to give it a makeover. In similar fashion, if your company expands through acquisition, and the acquired firm has different hardware, SAP can probably fold it into your organization without major new hardware expense.

2.2.3 Global Business Architecture

Facture, factura, rechnung, invoice. These are all the same to SAP. Though made in Germany, the software is now fully global and is the only applications suite on the market that can make this claim.

Its global features are numerous and include the following:

▶ Screens and language

The language appearing on screens, online help, and online documentation can appear in whatever language the user's logon dictates. Obviously, not all languages in the universe are available. You can read documentation in English, French, German, and Swedish, but not yet Urdu. You can have Japanese, Italian, Spanish, Arabic, Dutch, Greek, and Texan. You

cannot have Latin, but you can see Roman numerals on occasion. As of this writing, SAP software is said to be available in more than 30 languages.

The fact that language is user-driven means that users in various countries can all be logged on at the same time, each working in their local language, using whatever parts of the system they want. This means that an order can be entered in German in Hamburg, the materials can be ordered from Paris in French for delivery in Dutch to Brussels for manufacturing, and invoiced in English to the customer in Des Moines.

► **Multiple currencies**

Beyond language, SAP takes into account country-specific considerations. Multiple currencies can be handled in a variety of ways (fixed rates, rates updated via an external database, average periodic rates, etc.). Further, tax considerations by jurisdiction (country, province, state, NAFTA, GATT, EC) are addressed as table-driven system controls.

2.2.4 Transparency Between SAP and PC Applications

Microsoft and SAP have long been engaged in a fairly serious partnership and, as the Windows standard for graphical user interfaces has come to dominate the world, SAP offers exceptional integration between Microsoft applications and its own applications. With the flexibility afforded by multitier client service, Microsoft (or other PC-based) applications can be run separately or within the context of SAP.

For example, data can be extracted with standard SAP tools and manipulated with Microsoft Word, Excel, Access, or whatever. If your firm has a Microsoft background and users are already familiar with Windows navigation and standards, SAP software will not look all that foreign to them.

This Microsoft/SAP transparency was upgraded with the 2007 announcement of Duet, which provides great synchronization between Outlook, Microsoft Exchange, and SAP processes.

2.2.5 Audit Trail and Data Integrity Controls

SAP software is an auditor's dream. Every transaction is logged and "fingerprinted," which creates a record of who made the transaction (user ID), when it was made, and what it was. Further, there is no way to simply void or delete errors. Mistaken input has to be backed out of the system; error checking can include the matching of transactions that lead to an error and its subsequent resolution.

The system disciplines are rigid, which often leads people to complain about how inflexible the system can be. Sometimes this argument comes from the same people who seldom follow an agenda during meetings, push on doors marked "pull," and never order what's on the menu.

2.3 Core Business Applications of SAP

We will first zoom in on the hardy perennials, the absolute core of the applications suite, and then some of the other key applications (referred to herein as SAP Business Workflow applications) and focus solely on the characteristics and features important to management.

The core business applications offered by SAP are the same as those offered (individually, in most cases) by traditional package software vendors: Financial Accounting, Controlling, Sales and Distribution, Materials Management, Production Planning, and Human Capital Management. SAP ERP Financials has a solid reputation of being at the top of the charts in the world of software, and is most often cited as the equal of any stand-alone financials package you can find. The Sales and Distribution component was criticized by some in years past as "heavy" and difficult to master. This is because SAP is one product intended to serve diverse masters. Sales and distribution processes vary widely between retail, build-to-order, manufacturing, health, banking, and other industries. Such diversity has its natural consequences to Materials

Management (MM) and Production Planning (PP), since industry-specific considerations require SAP to dance with several feet at once. When you seek implementation, there is at first a tangle of sorts that SAP unravels, with increasing success, through its industry-specific templates and aids.

Few companies implement much more than these core applications at first. Most begin with FI and then carry on. Others implement all of these core applications in one go. Still other companies implement some of these core applications and interface them to legacy systems; this does not always make good sense but adds a mountain of consulting hours and keeps people busy.

2.4 Work Flow Applications

Plant Maintenance, Project Systems, SAP Workflow, and Quality Management represent a second tier of SAP components. Whereas Plant Maintenance is more of a functional application, the others relate directly to the flow of work throughout an enterprise. Plant Maintenance and Quality Management are just that—plant and quality maintenance. Each has industry-specific wrinkles and is tightly integrated with Production Planning and, to some degree, with Materials Management.

The SAP Workflow component allows for an automation of business processes, combining human and computer “events” or activities that trigger one another to the conclusion of a process. After basic business process reengineering (that box-arrow-box exercise), the system can be configured to address horizontal business flow. However, SAP Workflow, shown in Figure 2.1, takes this a step further by automating the process. Each event or activity is assigned to a person or the system, its duration is fixed, and work that is relative to a defined process is routed throughout an organization.

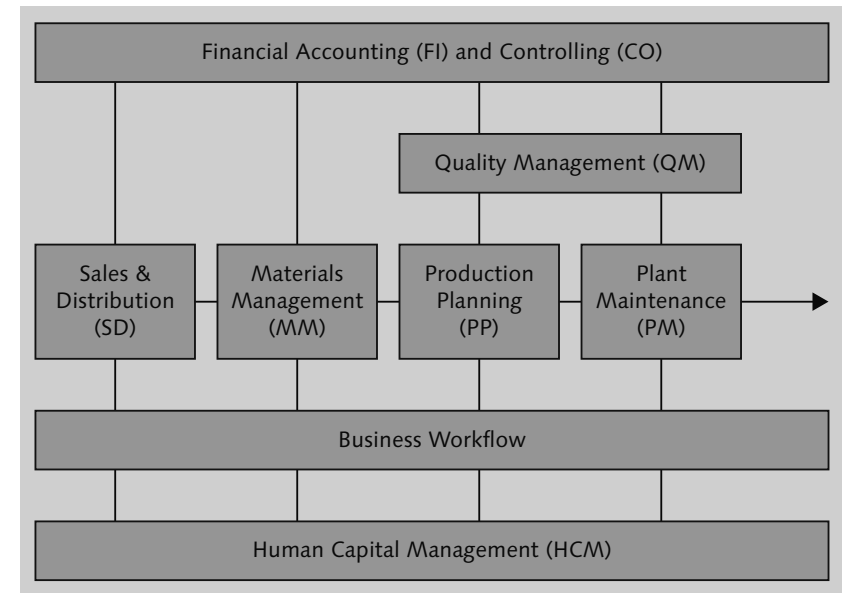


Figure 2.1 Automating Workflow

In the preceding sections, we have described primarily SAP ERP components, but SAP's offering spans much wider than ERP. SAP rolls out next technology quite frequently, so for the full menu, you should reference www.sap.com.

2.5 Accelerated Solutions with SAP NetWeaver

Since 2003, SAP has invested heavily in the development of SAP NetWeaver, which is the foundation for service-oriented architecture, or SOA. This architecture offers increased levels of adaptability, flexibility, and openness. *Openness* means that SAP applications can work with non-SAP applications. Such openness is one of the key distinctions between SAP and the various components of the Oracle offering. While Oracle wants its clients to

have nothing but Oracle software under the hood, SAP recognizes that most organizations will necessarily have other applications software and therefore need an architecture that will enable complete integration in terms of application processing, business intelligence, and data integrity and harmonization.

Some of the key components of SAP NetWeaver are as follows:

- ▶ SAP NetWeaver Portal provides a complete portal infrastructure along with knowledge management and collaboration software. An enterprise portal gives end users access to multiple types of information and applications through a standard interface.
- ▶ SAP BusinessObjects Business Intelligence makes information actionable by helping companies identify, integrate, and analyze disparate business data from both SAP and non-SAP sources.
- ▶ SAP NetWeaver Process Integration provides open integration technologies that support process-centric collaboration among SAP and non-SAP components both within and beyond enterprise boundaries.
- ▶ SAP NetWeaver Application Server is a development and deployment platform that supports web services, business applications, and standards-based development based on key technologies such as J2EE and ABAP.

Figure 2.2 shows these SAP NetWeaver offerings and how they interact with each other.

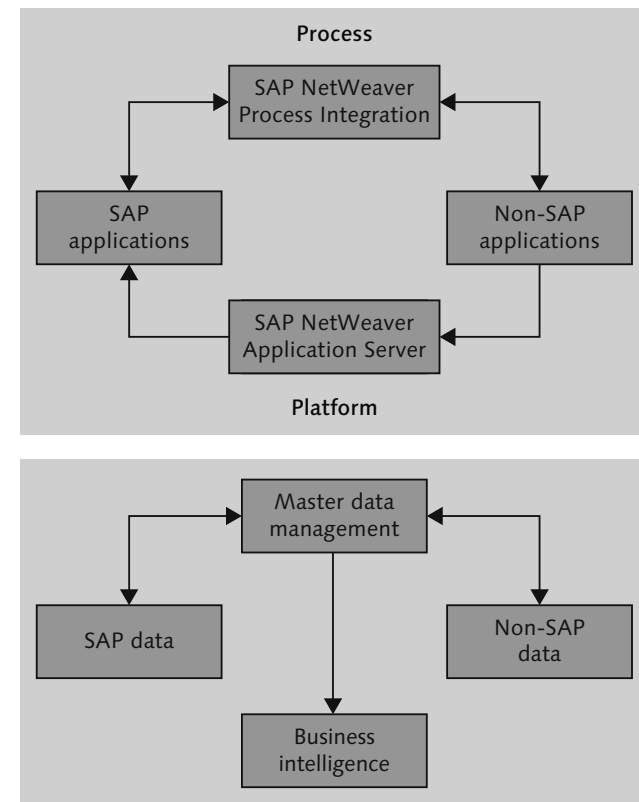


Figure 2.2 SAP NetWeaver Offerings

2.6 And All the Rest

Despite having offered a cursory overview of the company and the features and applications of SAP, we cannot state that we have told you what SAP is. In both breadth of scope and depth of functionality, the software is seemingly boundless, and SAP itself offers fat 9-inch-by-12-inch color-coded volumes for each of the applications.

We have not yet mentioned Assets Management, Inventory Management, Warehouse Management, or Service Management. Beyond these subjects, there are report and query aids, SAP-Script, Data Warehousing, and more. But this is a concise business guide, not an exhaustive technical text, so let's simply carry on in that vein, confident that the SAP pool is far deeper than this chapter cares to dive.

Further, SAP has extended its product well beyond the realm of pure ERP (as described thus far). There is a robust SAP Customer Relationship Management (SAP CRM) suite as well as SAP Advanced Planning and Optimization (SAP APO), advanced portals capability that allows for the comingling of various software on a single user's screen, advanced web middleware, and much more. This book is not intended to cover the entire SAP product galaxy and should remain only a point of entry into the subject. For more details on the full gamut of SAP products, browse with confidence through www.sap.com.

2.7 Critical Distinctions Between SAP and What You Know

When in the field, consultants tend to repeat certain phrases over and over. Often, these repetitions include sighs of exasperation, but the phrases must be repeated time and again because of the distinctions between SAP and what you have known in the past.

These are some of those phrases:

- ▶ "SAP is a business project, not an IT project."
- ▶ "We're not programming here, we're configuring."
- ▶ "It is integrated software, so what you do in [fill in department name] will immediately affect [fill in department name]."

Often, the difficulty in getting key messages across lies in the experience of the audience. Nearly everyone involved in an SAP

implementation has already participated in at least one traditional IT project and will probably rely on that experience as instructive. It may well be, but only partially so.

Do not entrench yourself into a Maginot Line of past experience and recite how you won the last war ad nauseam. To accelerate a conversion to SAP thinking, you should absorb and retain the lessons of this chapter, which will take a great strain off both yourself and your consultants.

2.7.1 Critical Distinction #1: SAP is a Business Endeavor, Not a Computer Endeavor

As elaborated in the first chapter, business folks are no longer the hostages of computer technology. In this light, there are multiple distinctions between SAP and what you know.

The first is that business people, not information technology people, directly determine what the systems should do. Further, business people also bend existing software to their wills. This is done by configuring SAP software according to established rules and methods.

The distinction between programming and configuring is of huge import. Programming requires technical knowledge, whereas configuring requires business knowledge.

Configuring is the setting of business tables that determine the format, the nature, the location, and the destination of information. Figure 2.3 shows an example of a configuration table in the Payroll component, in which the user is providing information about a new wage type to be created.

In contrast with configuring, programming is the creation of codes that manipulate the format, the nature, the location, and the destination of information.

Figure 2.3 Payroll Configuration Example

In essence, SAP software is comprised of hundreds of screens like this one, all of which drive data according to the rules laid down by business people.

This leads to a subdistinction, which is the disappearance of the traditional negotiation between business and IT groups for new information services or changes to existing services. In sum, SAP provides business software for business people, created by business people, and maintained by business people as business evolves.

2.7.2 Critical Distinction #2: Integration = Enterprise-wide = Horizontal Processes

Your project will not succeed if you plan to separately build individual applications as you have in the past. Decisions that you make about SAP Materials Management will certainly have repercussions on SAP Sales and Distribution and SAP Financial Accounting, and possibly on SAP Production Planning.

Further, your core implementation will take you longer than would the implementation of a new accounting package or a customized sales order processing module. Remember, you are not simply installing software; you are reinventing the manner in which your company functions. Thus, your implementation team will be comprised of representatives from throughout the company, and each will be tempted to defend the turf of his or her current domain. Turf protection is harmful to enterprise-wide thinking.

Another factor of an enterprise-wide undertaking is the heightening of risk. The stakes are higher, the potential benefits more dramatic, and the costs more visible than for a traditional systems undertaking. A lot of nervous activity occurs in such an environment. Emotions get jangled and tempers are tested. This is why change management is a subset of SAP projects. (More on this to come.)

2.7.3 Critical Distinction #3: Integration Places an Added Burden on Direct Users

One of the prime sources of resistance to an SAP implementation is the direct (or end) user group. This resistance is often related to a simple fear of change or a loathing to learn another system. This much can be overcome with good project leadership, but another cause for resistance to SAP is the added burden that it places on such users. This burden takes two forms:

1. Time

Compared to most legacy systems, SAP software requires more input and more complex input for the majority of its functions. Users will rightfully complain that for SAP software they are forced to use three screens to fulfill a function that required only a single screen for legacy systems.

2. Authority/responsibility

Work flow eliminates a major portion of supervisory tasks, and the integrated nature of SAP software puts power into the hands of the users. The entry of data is no longer simply a chore of reporting to the system but is now an instigator of action. Someone entering even supplementary data to an existing sales order is virtually working for accounting (cash flow), materials management (requisition), and production planning (for manufacturing and delivery dates) all at the same time.

Sniff the air and it smells of empowerment. Not that Dilbertville bogus empowerment, but the real thing.

2.7.4 Critical Distinction #4: The System Lifecycle Is Vastly Extended

No longer will you have to envision replacing your software wholesale or in large segments every five years or so. As configurable software, your SAP software should be modified according to changes in business climate and your firm's ambitions. Since these changes should not require reprogramming—or, worse, maintenance of interfaces—system degradation should not occur.

Further, you should be anticipating a new post-implementation organization in which your SAP-savvy staff remains a team that can drive continual business improvement, while your IT group takes on a technical support role.

The beauty and power of SAP are not found in its various parts but in how it can be used to drive better business results. The

power of the software exceeds that of whatever legacy firms you have lived with to date, so you need to be prepared in ways you never did in the past. In the next chapter, we will explore how to assure that preparation across your entire organization.

Contents

Preface	11
---------------	----

1 How SAP Discovered the New World 15

1.1 A Quarter Century of Partial Victories	15
1.2 The Accelerating Failure of Traditional Information Systems	16
1.3 Computerize This	20
1.4 Discovering the New World	21
1.5 SAP's Rise to the Top	24
1.6 Keeping Technology in Context	25

2 What Is SAP? 27

2.1 Reading with the SAP Alphabet	27
2.2 Features of SAP	29
2.2.1 Complete Suite of Integrated Applications	29
2.2.2 Open Systems Architecture	30
2.2.3 Global Business Architecture	31
2.2.4 Transparency Between SAP and PC Applications	32
2.2.5 Audit Trail and Data Integrity Controls ...	33
2.3 Core Business Applications of SAP	33
2.4 Work Flow Applications	34
2.5 Accelerated Solutions with SAP NetWeaver	35
2.6 And All the Rest	37
2.7 Critical Distinctions Between SAP and What You Know	38

2.7.1	Critical Distinction #1: SAP is a Business Endeavor, Not a Computer Endeavor	39
2.7.2	Critical Distinction #2: Integration = Enterprise-wide = Horizontal Processes	41
2.7.3	Critical Distinction #3: Integration Places an Added Burden on Direct Users	41
2.7.4	Critical Distinction #4: The System Lifecycle Is Vastly Extended	42

3 Are You Ready for SAP? 45

3.1	Red Light, Green Light	46
3.2	Assessing Your SAP Readiness	48
3.2.1	Level 1: Strategy	50
3.2.2	Level 2: Organization	50
3.2.3	Level 3: Goals and Measurements	51
3.2.4	Level 4: Consulting and Education	52
3.2.5	Level 5: Awareness and Commitment ...	52

4 SAP in a Microwave 55

4.1	A New System Lifecycle	55
4.2	SAP in a Microwave	58
4.2.1	The Planning Stage	59
4.2.2	The Development Stage	67
4.3	Post-Implementation: The Windfall	78
4.4	Accelerated SAP Implementations	80

5 There's No Such Thing as Having SAP 85

5.1	The SAP Long Haul	86
5.2	Post-Implementation Excellence	90

5.3	Center of Excellence Maturity	94
5.4	Application Outsourcing	99

6 Seizing Business Benefits with SAP 103

6.1	Show Me the Money!	103
6.2	"We Have Met the Enemy and He Is Us"	107
6.3	The Intangibles	109
6.4	Better, Faster, Cheaper	113
6.5	Postscript: Business-IT Alignment Is the Hero	114

7 Gain Sharing: A 21st Century Way to Partner 117

7.1	Negotiation Points for Gain Sharing	118
7.2	Key Performance Indicators	120
7.3	Advantages and Cautions	121

8 Selecting and Managing SAP Consultants 125

8.1	The Frenzy Is Over	125
8.2	Global Delivery Models	126
8.3	What SAP Consultants Do	130
8.4	Consulting Billing Methods	131
8.5	Choosing Your SAP Consultants Wisely	133
8.6	Successful Partnerships with SAP Consultants	138

9 Curves Ahead: SAP Education for All 141

9.1	Executives Are Not Trained—They Are Informed	142
9.2	Education for Middle Management	144
9.3	Project Team Training	145
9.3.1	Phase 1: Take It from the Top	145

Contents

9.3.2	Phase 2: The Horizontal View	146
9.3.3	Phase 3: The Vertical View	147
9.3.4	Phase 4: Field Guidance	147
9.3.5	Phase 5: Field Testing the Project Team	148
9.4	End-User Training	148
9.5	Racing to the Expert Plane	154

10 Making the Most of Change Management 159

10.1	Change Management Element #1: Program Governance	162
10.2	Change Management Element #2: Risk/Readiness Assessment	164
10.3	Change Management Element #3: A Leadership Program	168
10.4	Change Management Element #4: A Communications Program	170
10.5	Change Management Element #5: A Job Alignment Approach	174
10.6	Change Management Element #6: A Super-User Program	176
10.7	Change Management Element #7: A Knowledge Transfer Process	180
10.8	Change Management Element #8: Role-Based Training	182

The Authors	185
Index	187

Index

A

Accelerated implementation 83
Application maintenance 99
Application management 99
Application transparency 32
ASAP Focus 80, 82
As-is phase 13, 68
Asset management 103
Audit trail 33

B

Benefits case fiction 108
Benefits case loathing 108
Best practices 13, 82
Billing model
 Fixed fee 117, 132
 Mixed fee 117, 132
 Time and expenses 117, 132
 Value-based 117, 132
Business Blueprint 81
Business case 60, 108
 Factors to address 60
Business development stage 130
Business drivers 105
Business goals 105
Business group 17
Business people 39
Business process 24
 Best practices 69
 Design 57, 67, 81, 122
 Reengineering 13, 67
Business strategy 105
Business/IT alignment 26, 94

C

Change management 48, 49, 152, 157, 159, 161
Communications program 170
Job alignment approach 174
Knowledge transfer process 180
Leadership activities 162
Leadership program 168
Obstacles 159
Program governance 162
Risk/readiness assessment 162, 164, 167
Role-based training 182
Super-user program 162, 176
Client ownership 138
Client/server technology 22
Component testing 75
Computerization 21
Configuration 70, 81, 127
 Horizontal view 146
 Remote 129
 Vertical view 147
Consulting 130
 Best practices 134
 Billing methods 117
 Culture 138
 Expertise 13
 External 64
 Internal 64
 Selection criteria 134
 Short-listing candidates 134
Continuous business improvement 79, 92
Continuous staff training 49
Core implementation 41, 73, 79, 96
Cost savings 18
Customization 70, 74, 81
Cut-over 81

D

Data center dispersal 18
 Data entry dispersion 19
 Data handling 30
 Data integrity 30
 Controls 33
 Data maintenance 30
 Data migration 77, 81
 Data redundancy 18
 David Chapman 73
 Delivery team 64
 Democratization of information 18
 Distributive processing 19

E

End users 94
 End-user competency 152
 End-user training 77, 81, 141
 Enterprise application integration 94
 Enterprise modeling 81
 Environment 48, 73, 152
 Expert plane 154, 156
 Expertise 48, 152

F

Final Preparation 81
 Finance organization 103
 Formal request for proposal (RFP) 134
 Framers 64
 Functional requirements 56
 Functional testing 129
 Functionality 56

G

Gain sharing 117
 Benefits share 118
 Measurements 123
 Partnership 119
 Rate reduction 119
 Share duration 118

Gap analysis 72
 Global business architecture 31
 Global delivery 126, 127
 Cost containment 128
 Time compression 128
 Go-live 78, 81, 86, 89, 99

H

Horizontal processes 41

I

Implementation 58, 108, 141
 Benefits 108
 Development stage 67
 Duration 64
 Evolution 141
 Functionality 108
 Obstacle 66
 Planning stage 59
 Information requirements 56
 Information stalemate 20
 Information system
 Failure of traditional systems 16
 Lifecycle 16, 55, 63
 Maintenance 16
 Infrastructure 94
 Integration 41
 Applications 23, 29
 Requirements 56
 Integration testing 75
 Horizontal 129
 Interface requirement 30
 Inventory 103
 IT burden 56
 IT group 17
 IT people 39

J

Jack Childs 89
 James Champy 24
 John Leffler 87, 98

K

Key performance indicator (KPI) 49,
 92, 97, 105, 120
 Operational 106
 Program 107
 Knowledge transfer 129, 180

L

Lag time 56
 Languages 23, 31
 Learning curve 155
 Legacy system 74, 109

M

Management preparation 77
 Mark Dendinger 78
 Mass customization 133
 Master data conversion 76
 Michael Connor 51, 103, 159
 Michael Hammer 24, 113
 Microcomputing 23
 Migration 73
 Multiple currencies 32

N

Nancy Bancroft 73

O

Openness 35
 Operating systems 23
 Ownership and drivers 48, 152

P

Patti Walsh 77
 Personal computer 18
 Mainframe connections 19

Planning stage 130
 Planning templates 63
 Platforms 23
 Portability 31
 Post-implementation 79, 80, 89, 139
 Power curve 155
 Project charter 62
 Project management 64
 Project preparation 81
 Pull marketing 171
 Purchasing 103
 Push marketing 170

R

Readiness Quotient (RQ) 165
 Realization 81
 Reengineering 113
 Reengineering revolution 114
 Remote services 127
 Reporting 74
 RICEF 75
 Risk management 48
 Risk measurement 49
 Runway 155

S

SAP 27
 Evolution 23
 Features 29
 Marketing 24
 Origin 23
 SAP Advanced Planning and
 Optimization 38
 SAP BusinessObjects Business
 Intelligence 36
 SAP Center of Excellence 85, 88, 89,
 91, 94, 163
 Maturity assessment 100
 SAP Competency Centers 88
 SAP Customer Relationship
 Management 38, 123
 SAP education 54, 130, 141
 Business blueprinting 144

Index

SAP education 54, 130, 141 (Cont.)
 Business context 143, 153
 Business intelligence 144
 Change management 143
 Configuration time 145
 Continuous reengineering 144
 Continuous training 150
 Customization 145
 End user 148
 Executive 142
 Middle management 144
 Project team 145
 Staff retention 145
 Team mentality 145
 Work flow 143
SAP ERP roadmap 86
SAP implementation
 Benefits 103, 110, 112, 113
 Obstacles 47, 51
 Readiness assessment 45, 53
 Readiness levels 48
SAP installation 151
 Life expectancy 86
SAP maturing process 126
SAP NetWeaver 25, 28, 35
SAP NetWeaver Application Server 36
SAP NetWeaver Portal 36
SAP NetWeaver Process Integration 36
SAP R/3 24, 25, 27, 73, 80, 125
SAP Then vs. SAP Now 13
SAP Workflow 34
Scalability 22
Stakeholders 64
Stress testing 75
Subject matter expert (SME) 177

Super user 76, 148, 176
 Sponsorship 179
System lifecycle 42
System testing 75
Systems architecture 30
Systems integration 134
 Best practices 138

T

Technical development stage 130
The 48-hour rule 71
The Doane Curve 151
The rule of three 71
The SAP Green Book 87, 99
Thomas H. Davenport 92
Transactional connectivity 22

U

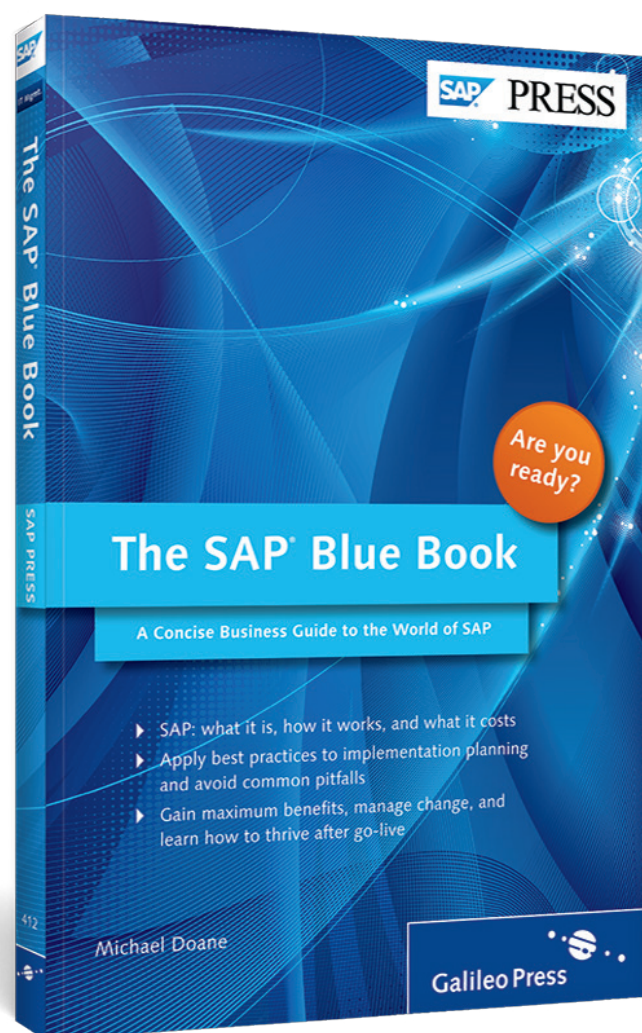
User acceptance testing 75

V

Value engineering 13, 60
Vertical and horizontal
 communication 49

Y

Y2K 13, 22



Michael Doane

The SAP Blue Book

190 Pages, 2012, \$29.95

ISBN 978-1-59229-412-1

 www.sap-press.com/3014



Michael Doane is an executive consultant at CGI. He has more than 35 years of business and information systems experience, including enterprise applications consulting and as an industry analyst.

In addition to prior roles as an SAP practice lead at Grant Thornton and The Consulting Alliance, Michael has directed several major consulting engagements for large systems integrators—most notably in financials and logistics—in North America, Europe, and Asia. Before entering the world of consulting, he was the European IS director for the Plessey Company Ltd. and for Ferry Peter, a division of Wiggins Teape.

He has been publishing information about SAP since 1996. In addition to writing this book, he is the author of *The SAP Green Book: A Business Guide for Effectively Managing the SAP Lifecycle* and co-author, with Jon Reed, of *The SAP Consultant Handbook*.

Since 2001, he has been advising clients on IT strategies, implementation and integration strategies, service provider selection and management, and best practices and methods for deriving value from enterprise applications investments.

We hope you have enjoyed this reading sample. You may recommend or pass it on to others, but only in its entirety, including all pages. This reading sample and all its parts are protected by copyright law. All usage and exploitation rights are reserved by the author and the publisher.