

Installation of the SAP Mini Basis with Microsoft SQL Server 2000

| | | |
|----|--|----|
| 1. | Installation of the Microsoft SQL Server 2000 Personal Edition | 2 |
| 2. | Important Steps before the installation of the Mini R/3 Basis System | 8 |
| 3. | Installation of the Mini R/3 Basis System | 8 |
| 4. | Start of the Mini R/3 system | 11 |
| 5. | Configuration of the Mini R/3 system | 12 |

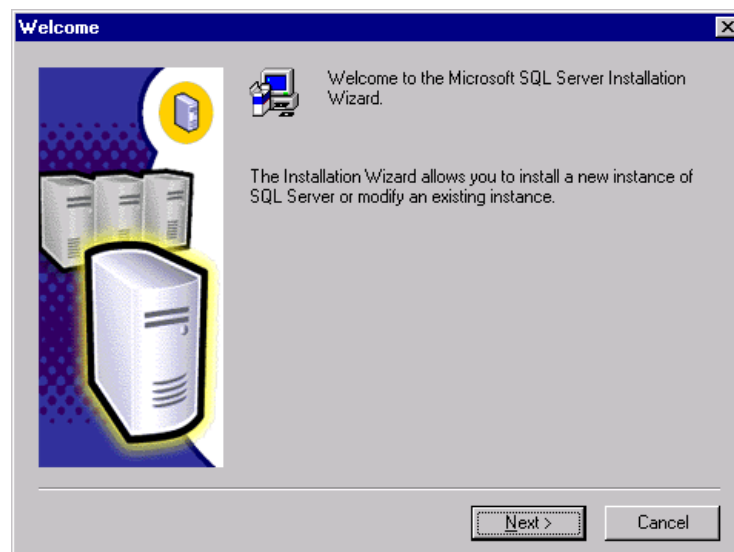
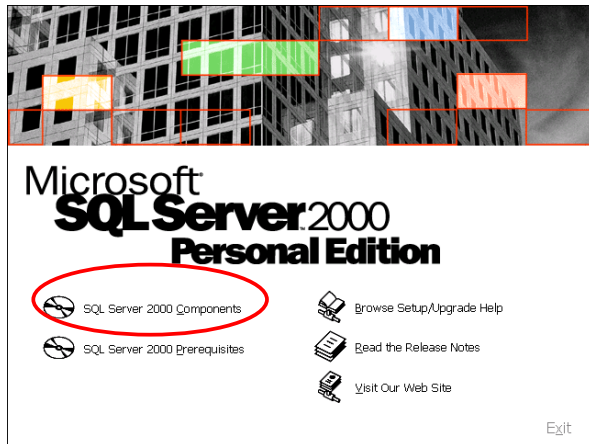
Caution:

This is no official SAP documentation!

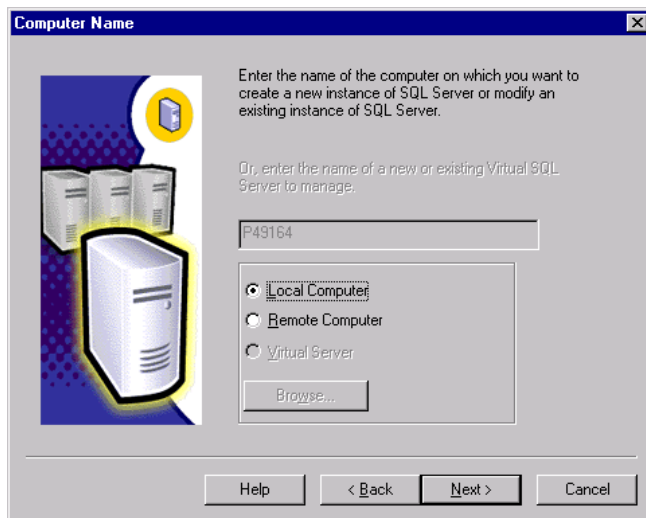
No warranty!

1. Installation of the Microsoft SQL Server 2000 Personal Edition

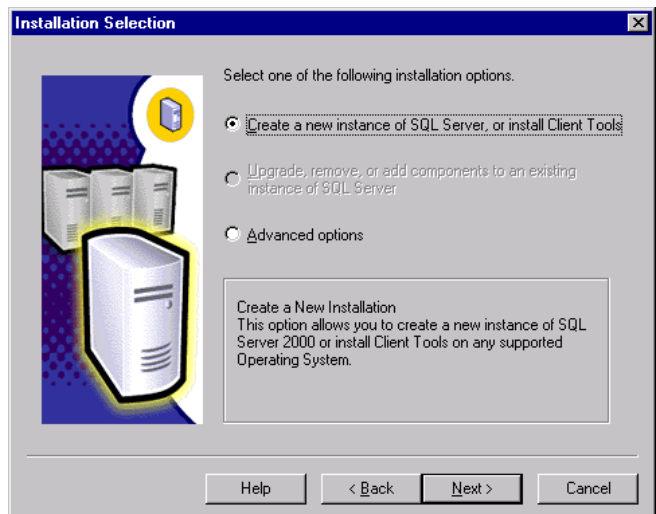
- Insert the MS SQL 2000 CD in the CD-Rom – Drive
- The installation process starts automatically
- Just follow the steps as described below



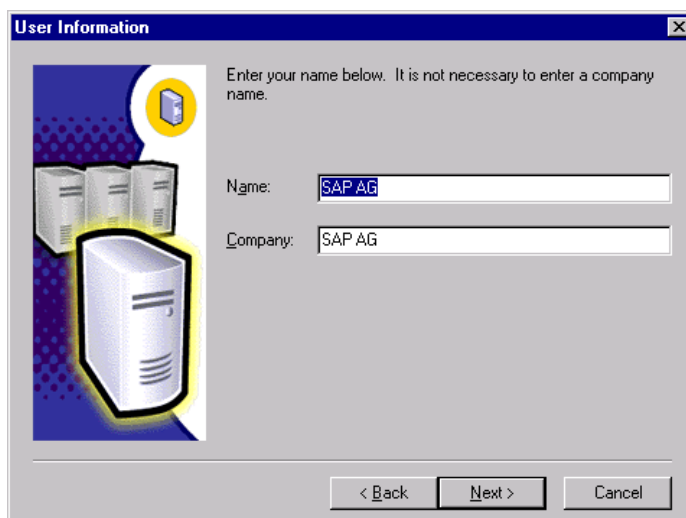
Confirm with *Next*



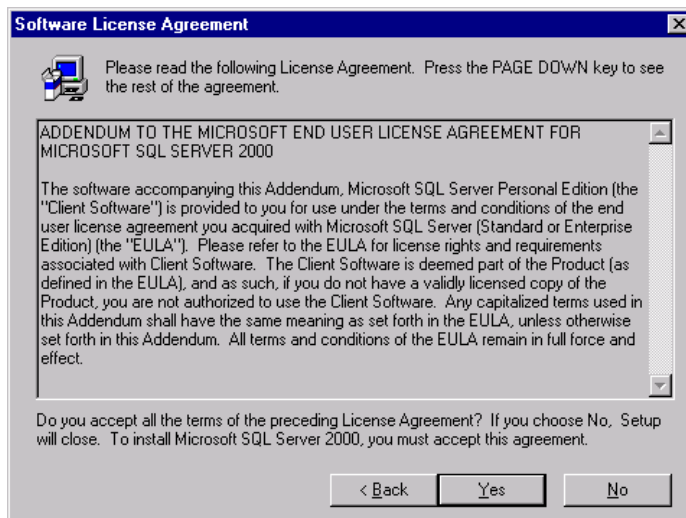
Confirm with *Next*



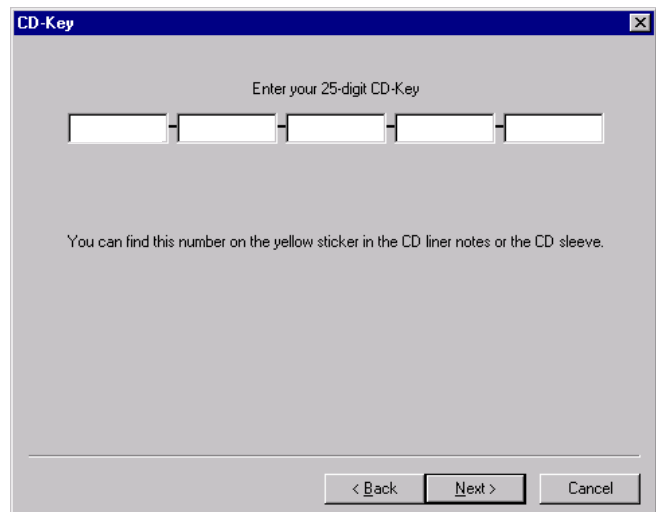
Confirm with *Next*



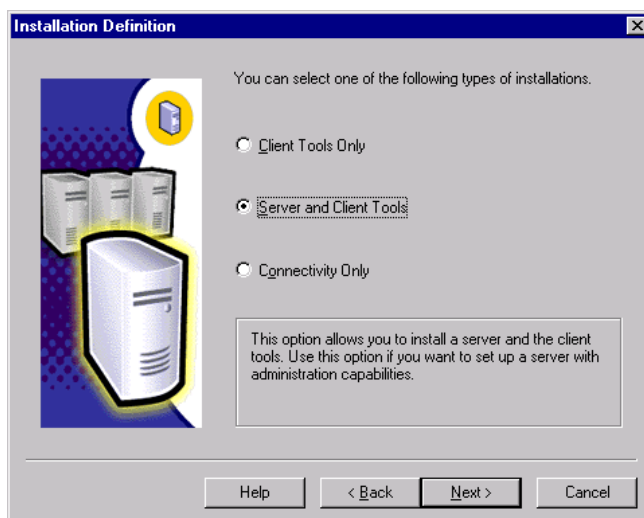
Confirm with *Next*



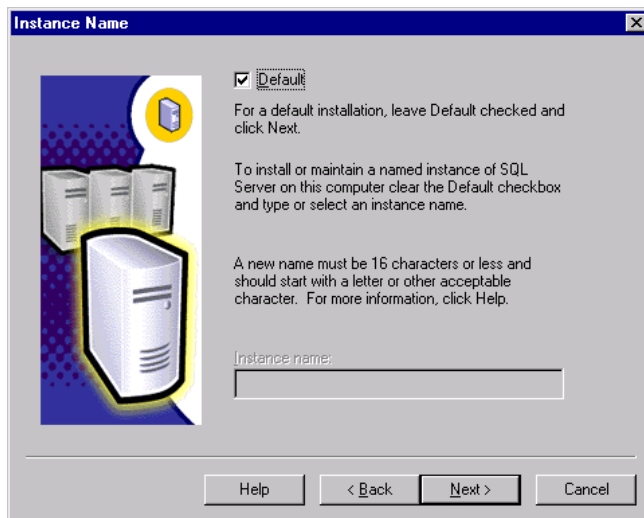
Confirm with **Yes**



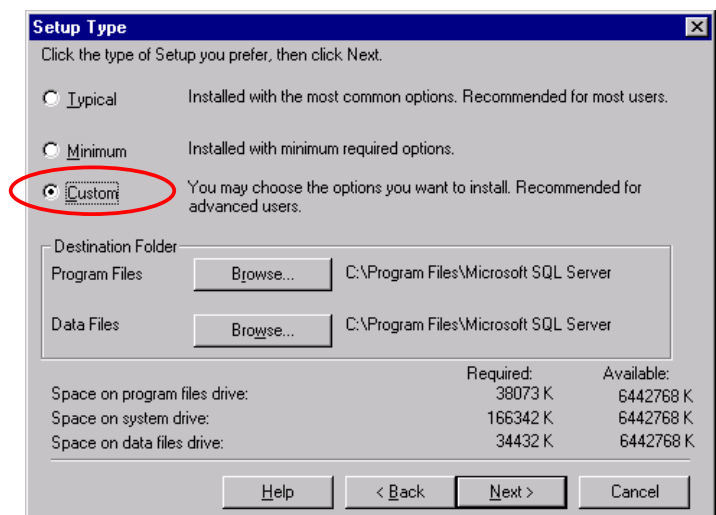
Enter the **CD-Key** and confirm with **Next**



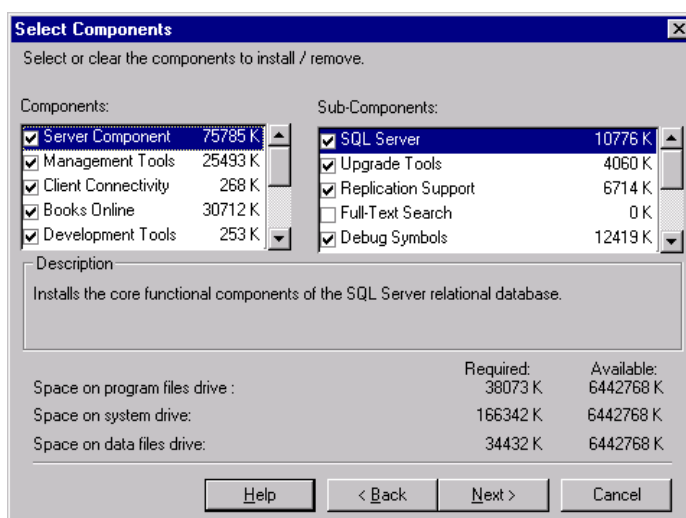
Confirm with **Next**



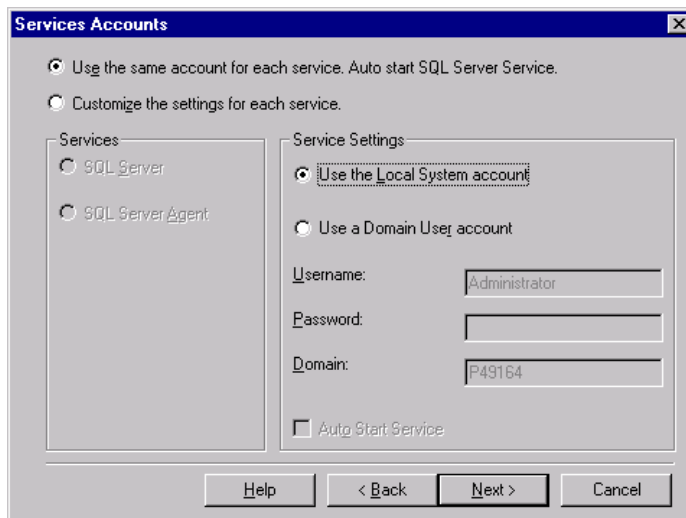
Confirm with *Next*



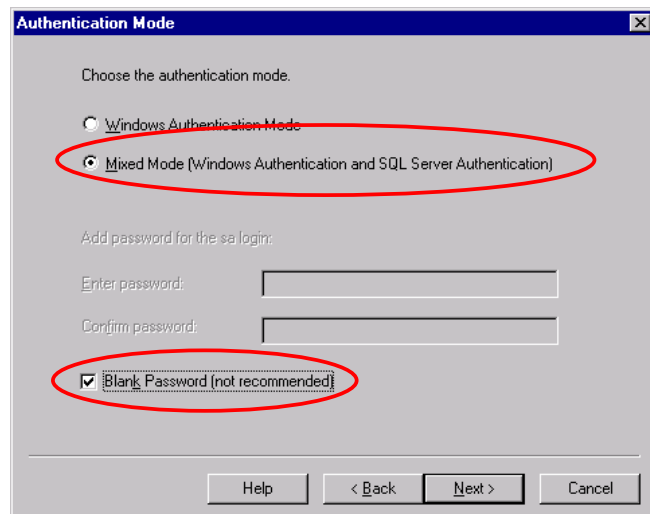
Select “Custom” and confirm with *Next*



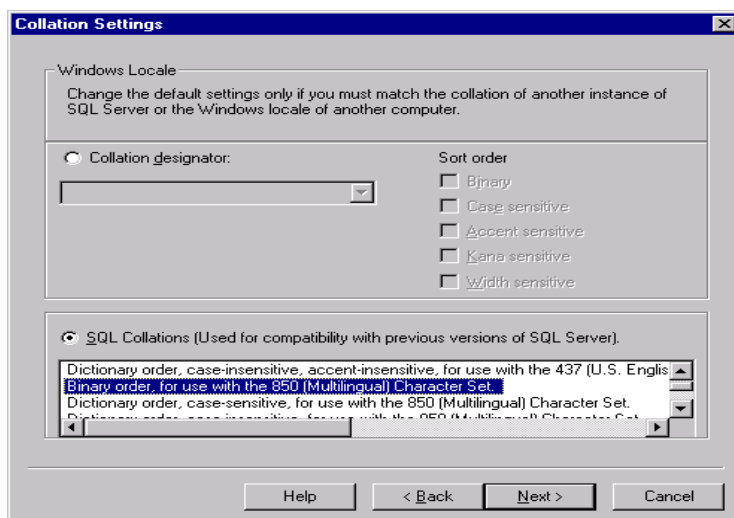
Confirm with *Next*



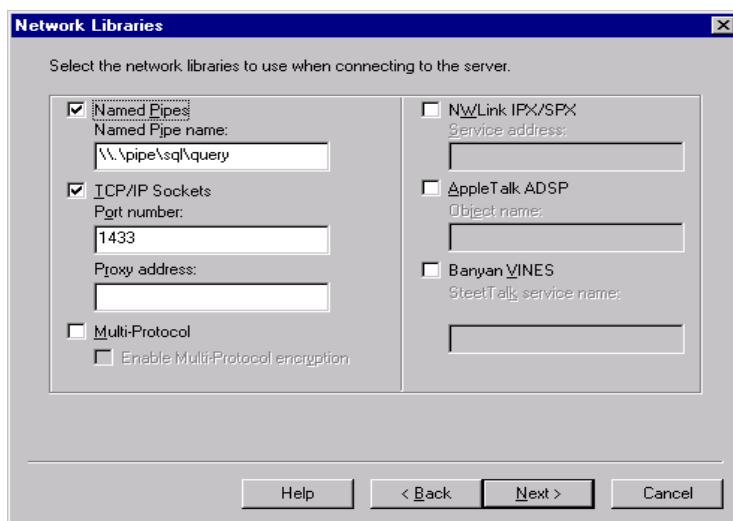
Confirm with *Next*



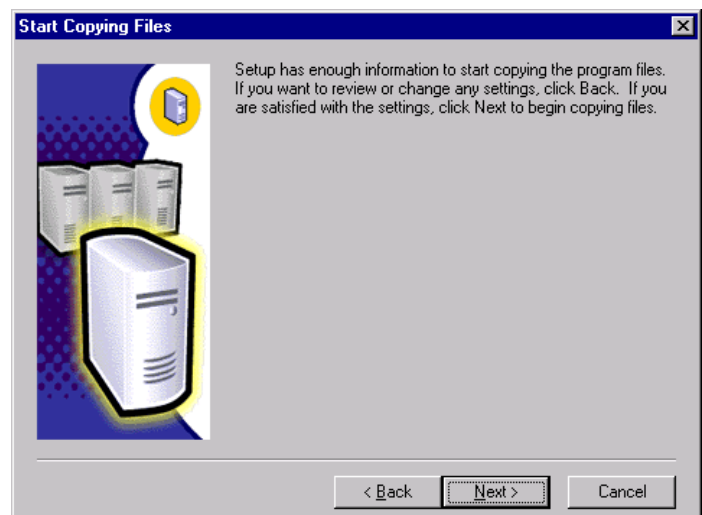
Select “Mixed Mode” and “Blank Password” and confirm with *Next*



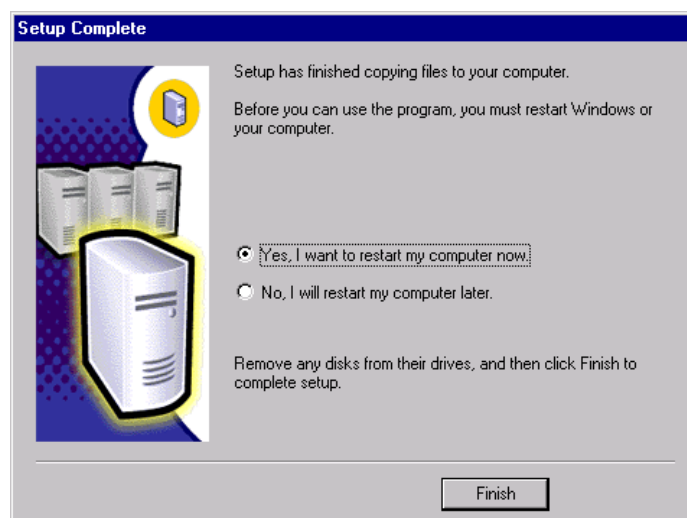
Select “SQL Collations”, choose “Binary order, for use with the 850 (Multilingual) Character Set” and confirm with *Next*



Confirm with **Next**



Confirm with **Next**



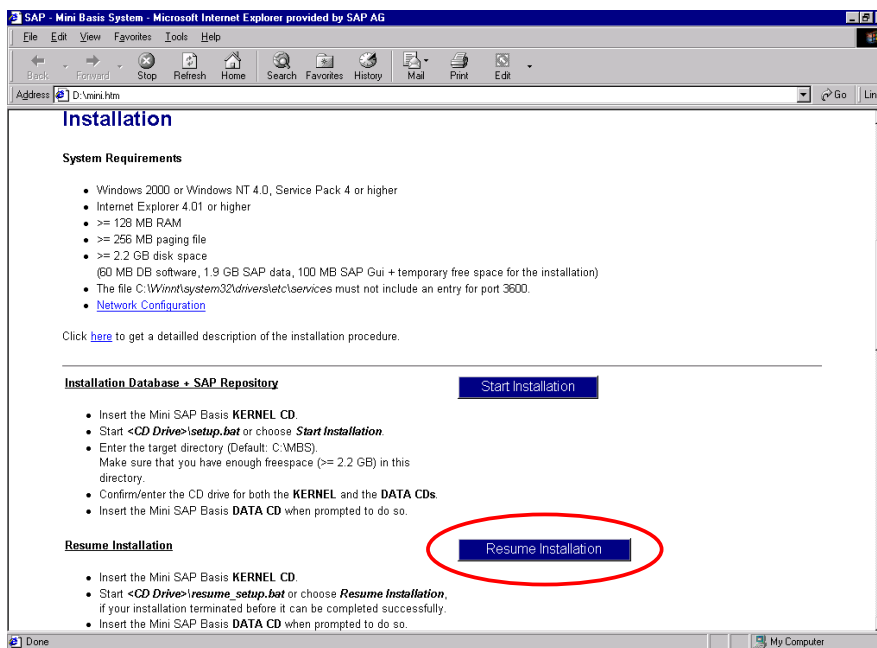
Complete the installation with **Finish**

2. Important Steps before the installation of the Mini R/3 Basis System

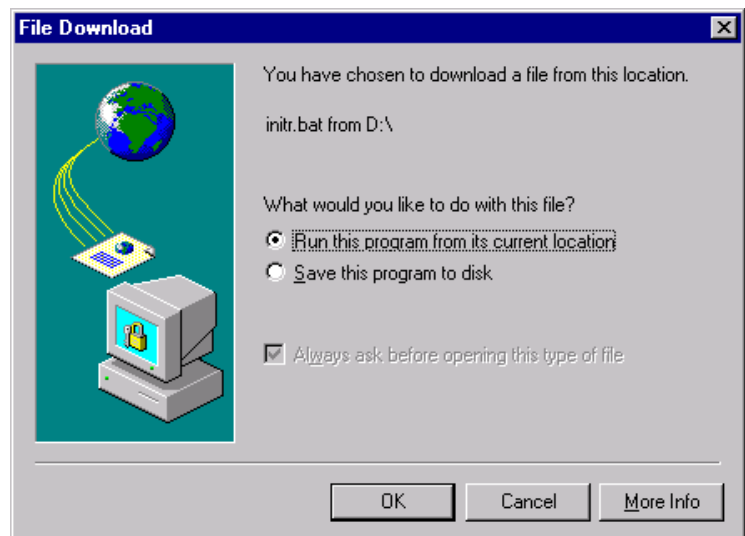
- Open the file *services* in folder *C:\WINNT\system32\drivers\etc* with an editor e. g. NOTEPAD
- **Delete line with port 3600/tcp**
- Save and exit the editor

3. Installation of the Mini R/3 Basis System

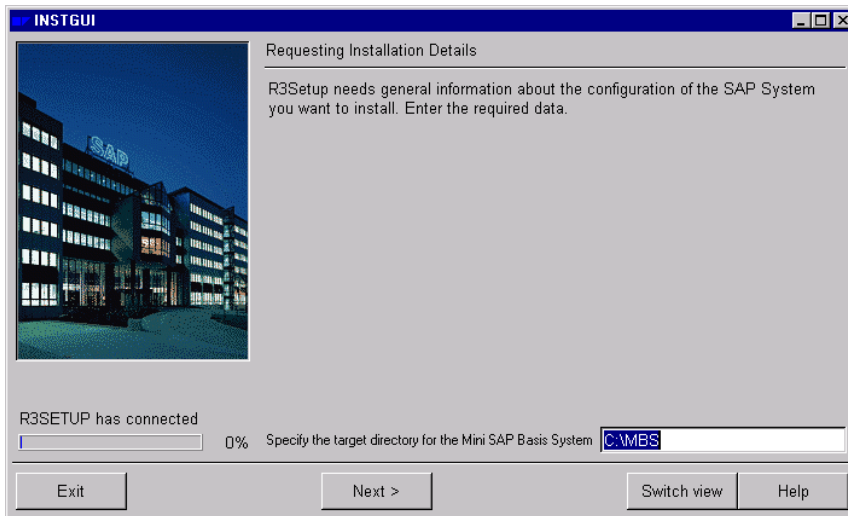
- Insert CD 1 “KERNEL” in CD-ROM – Drive
- The “Welcome Screen” starts automatically
- Press **Resume Installation** to adjust the installation of the Mini R/3 to the existing version of MS SQL Server installation
- Just follow the steps as described below



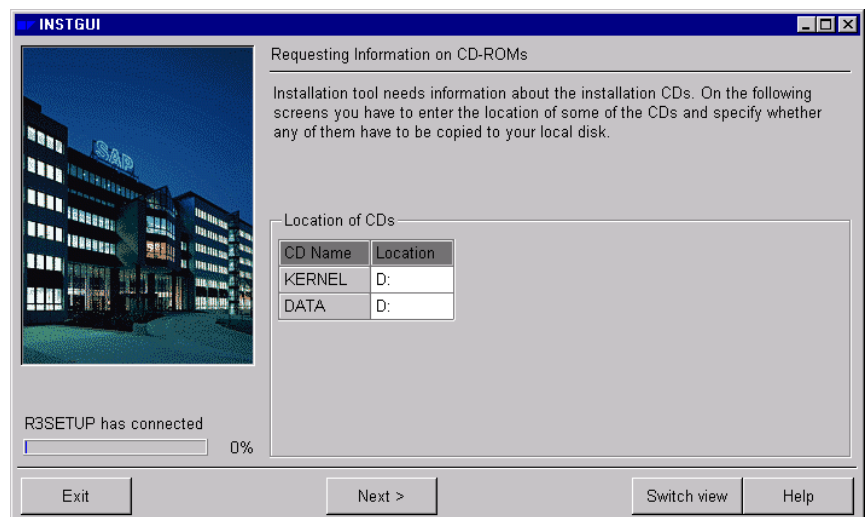
Press ***Resume Installation***



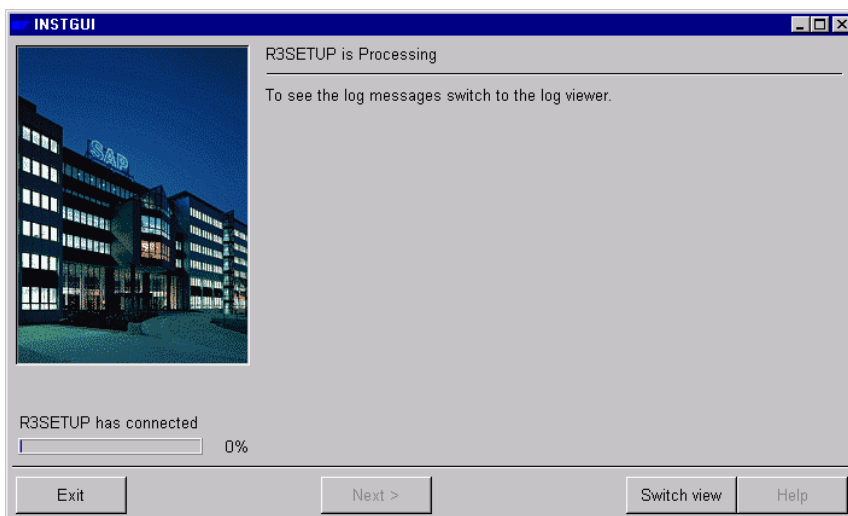
Choose “Run this program from its current location”



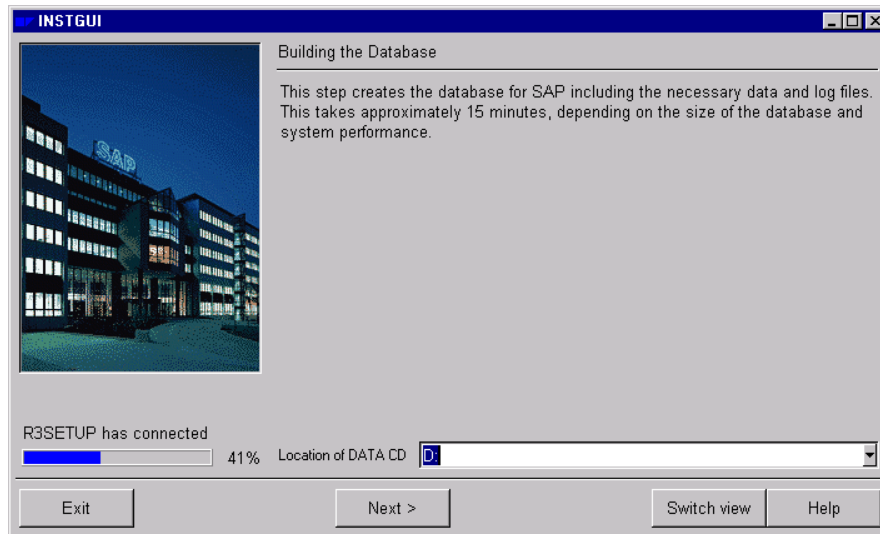
Choose the installation directory **C:\MBS**. Confirm with *next*



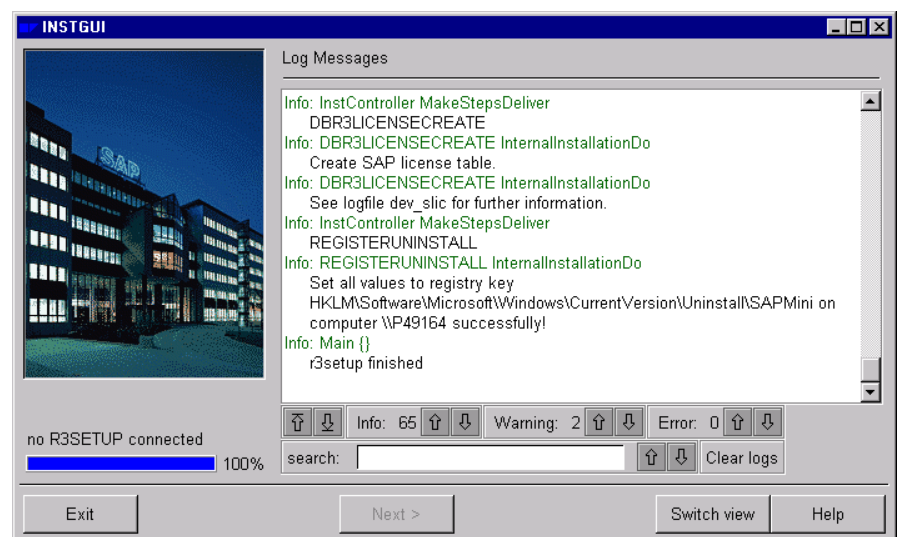
Confirm the Path for the CD-ROM drive with *Next*



With **Switch view** you can show the Log Messages. The warnings during the installation can be ignored



Insert CD 2 “**DATA**” in CD-ROM – Drive and press **Next**



When the status bar has reached 100 % you can quit the installation routine with **Exit**

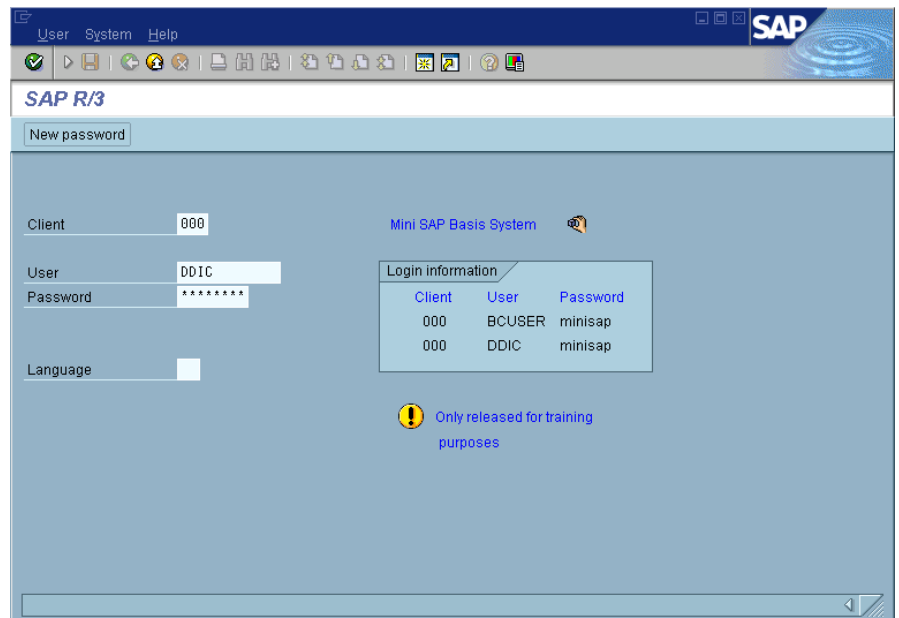
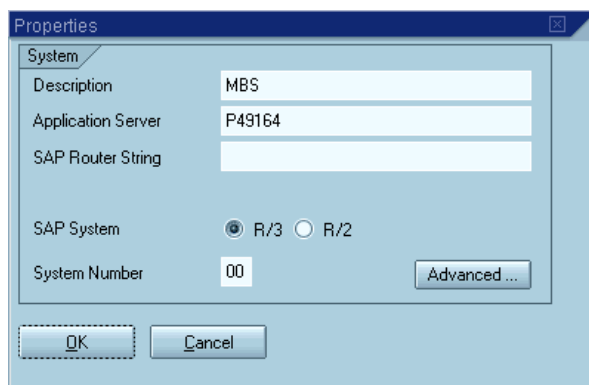
4. Start of the Mini R/3 system

- To start the Mini R/3 system double click on the icon *Start R3 MBS*
- Before you can logon to the system you have to create a new entry in the SAPLogon:

Select *New*

Make the following entries:

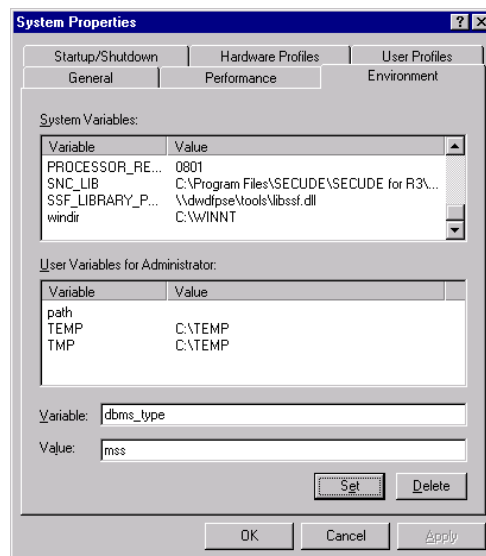
- Description: *MBS*
- Application Server: *[Computer name]*
- SAP Router String: *[EMPTY]*
- SAP System: *R/3*
- System Number: *00*



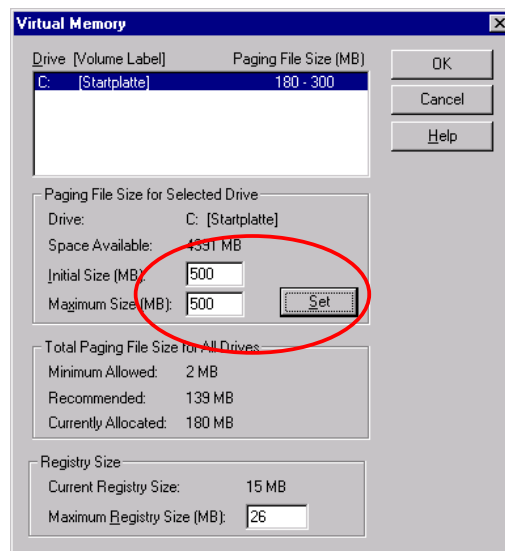
Logon to the system with user **DDIC** and password **minisap**

5. Configuration of the Mini R/3 system

1. Open the control panel, double click on “System”, select “Environment” and go to “System Variables”
 - Set the following “System Variables”:
 - dbms_type = mss
 - MSSQL_DBNAME = MBS
 - MSSQL_PASSWD = sapr3
 - MSSQL_SERVER = localhost
 - MSSQL_USER = sapr3
 - Add the following value to the “Path” variable: C:\MBS

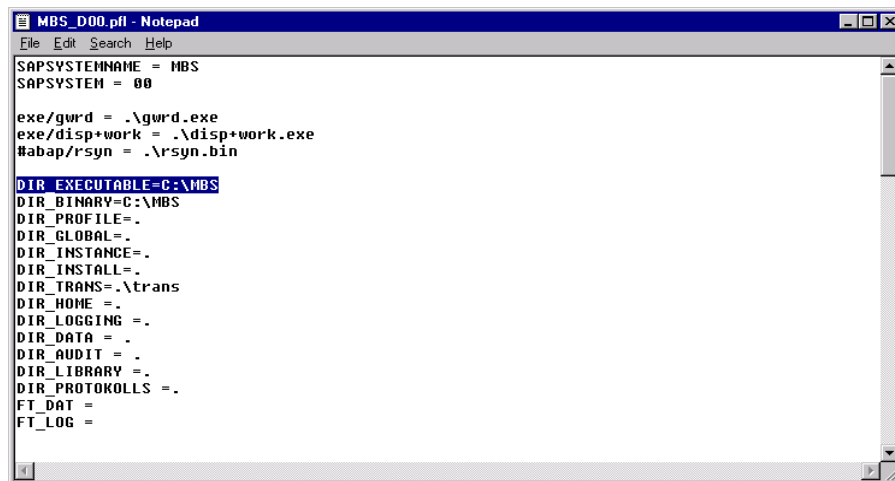


2. Select “Performance” in the “System Properties”, and press the “Change” button
 - Change the values for the “Initial Size” and the “Maximum Size” to 500 and press the “Set” button
 - Confirm with **OK** (2 x)
 - Restart your computer



3. Open file **C:\MBS\MBS_D00.pfl** and set the following parameters:

- DIR_EXECUTABLE = C:\MBS
- DIR_BINARY = C:\MBS
- rdisp/wp_no_btc = 1
- PHYS_MEMSIZE = 128
- abap/buffersize = 60000
- rsdb/ntab/entrycount = 1500
- sap/bufdir_entries = 300
- zcsa/presentation_buffer_area = 500000
- ztta/dynpro_area = 400000
- rdisp/max_wprun_time = 2000



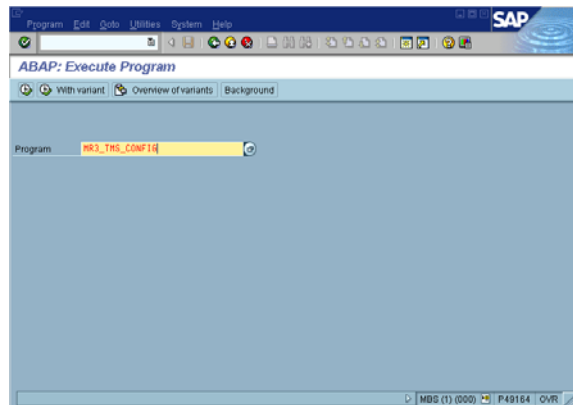
```
SAPSYSTEMNAME = MBS
SAPSYSTEM = 00

exe/gwrd = .\gwrd.exe
exe/disp+work = .\disp+work.exe
#abap/rsyn = .\rsyn.bin

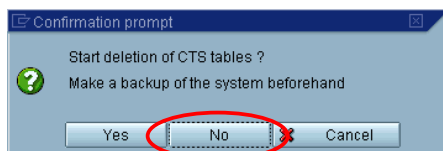
DIR_EXECUTABLE=C:\MBS
DIR_BINARY=C:\MBS
DIR_PROFILE=.
DIR_GLOBAL=.
DIR_INSTANCE=.
DIR_INSTALL=.
DIR_TRANS=.trans
DIR_HOME =.
DIR_LOGGING =.
DIR_DATA =.
DIR_AUDIT =.
DIR_LIBRARY =.
DIR_PROTOKOLLS =.
FT_DAT =
FT_LOG =
```

4. Start the Mini R/3, logon to MBS and call transaction **sa38**

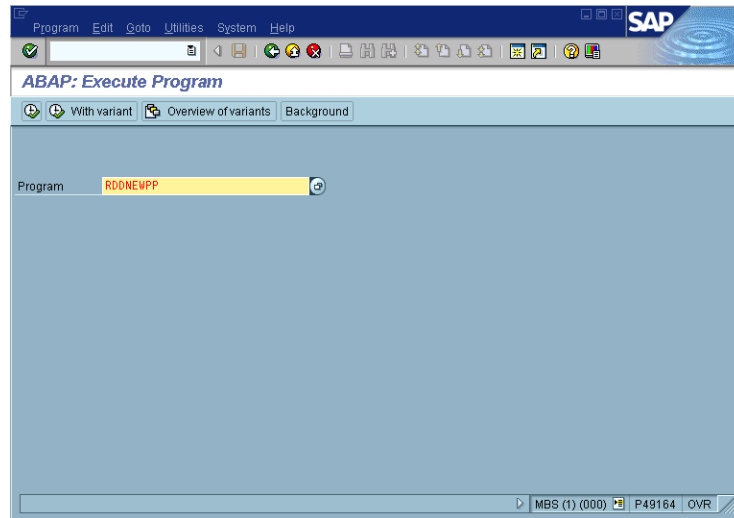
- Run program **MR3_TMS_CONFIG**



- Confirm the following dialog with **No**

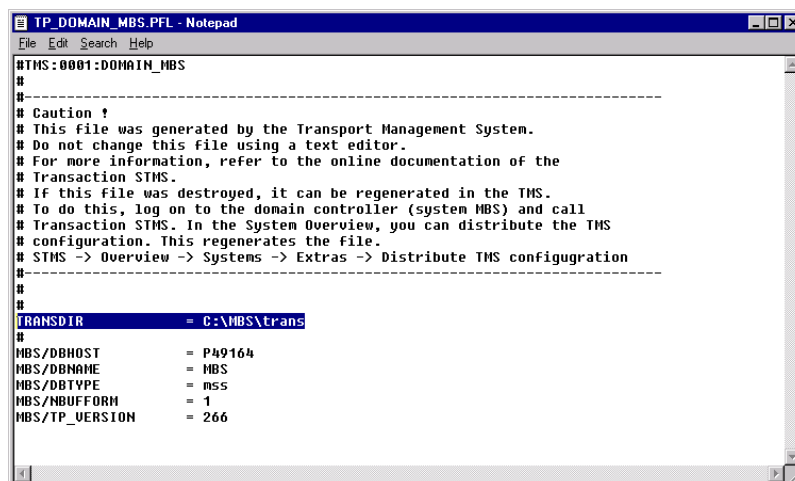


- Run program **RDDNEWPP**



5. Open file **C:\MBS\trans\bin\TP_DOMAIN_MBS.pfl** and set the following parameter:

- **TRANSDIR = C:\MBS\trans**



- **Restart the Mini-R/3**