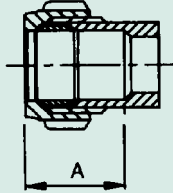


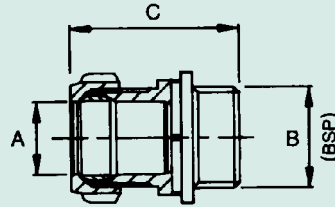
Installation Dimensions (capnuts hand tight)

COMPRESSION END TUBE STOP DIMENSION Standard for all Components



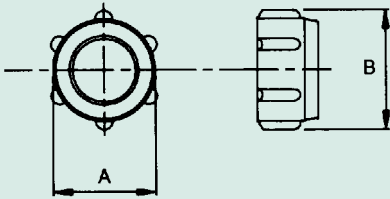
Size	A (mm)
15	21.8
22	25.4
28	26.0
35	30.0

302 or S302 STRAIGHT COUPLER Conex x Male Thread (Parallel)



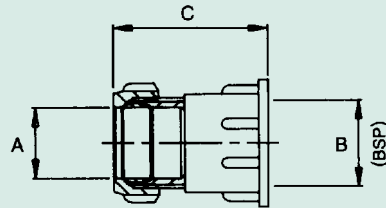
Size	A (mm)	B (BSP)	C (mm)
15 x 1/2	15	1/2	37.5
22 x 3/4	22	3/4	42.5
22 x 1	22	1	41.5
28 x 1	28	1	45.0

63 CAPNUT



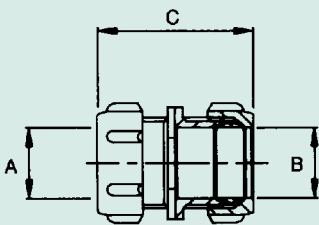
Size	A (mm)		B (mm)
	Maximum	Minimum	
15	24.55	24.33	27.3
22	32.74	32.53	36.5
28	39.16	38.94	45.2
35	46.85	46.35	50.0

303 or S303 STRAIGHT COUPLER Conex x Female Thread (Parallel)



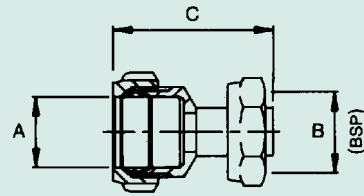
Size	A (mm)	B (BSP)	C (mm)
15 x 1/2	15	1/2	39.5
22 x 3/4	22	3/4	43.5
22 x 1	22	1	49.0
28 x 1	28	1	48.0

301 or S301 STRAIGHT COUPLER Conex x Conex



Size	A (mm)	B (mm)	C (mm)
15 x 15	15	15	44.3
22 x 15	22	15	50.5
22 x 22	22	22	52.0
28 x 28	28	28	53.5

303SF or S303SF STRAIGHT COUPLER Conex x Swivel Female Thread



Size	A (mm)	B (BSP)	C (mm)
15 x 1/2	15	1/2	44.0
15 x 3/4	15	3/4	44.5
22 x 3/4	22	3/4	48.0
28 x 1	28	1	49.0

N.B. Conex capnuts greater than 28mm will have octagonal external form.
For other dimensional data, please contact our Technical Department.