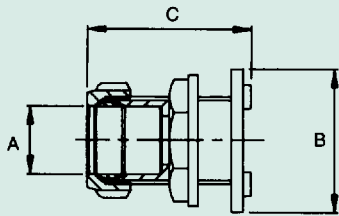
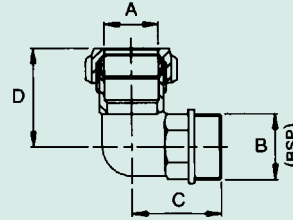


321 or S321 TANK CONNECTOR
Conex



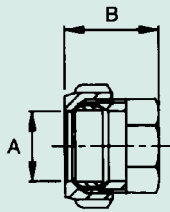
Size	A (mm)	B (mm)	C (mm)
15	15	35.0	49.0
22	22	43.0	46.0
28	28	49.0	48.0
35	35	56.5	45.5

402 or S402 ELBOW
Conex x Male Thread (Parallel)



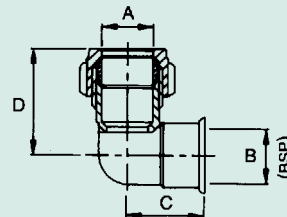
Size	A (mm)	B (BSP)	C (mm)	D (mm)
15 x 1/2	15	1/2	25.7	34.0
22 x 3/4	22	3/4	32.0	37.5
22 x 1	22	1	34.5	42.7
28 x 1	28	1	38.5	43.2

323 or S323 STOP END
Conex



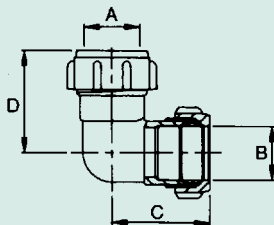
Size	A (mm)	B (mm)
15	15	26.0
22	22	27.0
28	28	31.0
35	35	34.7

403 or S403 ELBOW
Conex x Female Thread (Parallel)



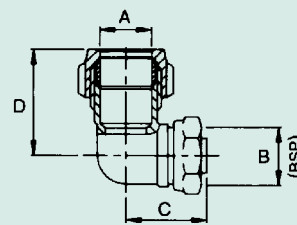
Size	A (mm)	B (BSP)	C (mm)	D (mm)
15 x 1/2	15	1/2	15.3	34.3
22 x 3/4	22	3/4	28.5	39.4
22 x 1	22	1	30.5	42.6
28 x 1	28	1	35.1	43.9

401 or S401 ELBOW
Conex x Conex



Size	A (mm)	B (mm)	C (mm)	D (mm)
15 x 15	15	15	31.5	31.5
22 x 22	22	22	36.9	36.9
28 x 28	28	28	41.9	41.9
35 x 35	35	35	48.2	48.2

403SF or S403SF ELBOW
Conex x Swivel Female Thread



Size	A (mm)	B (BSP)	C (mm)	D (mm)
15 x 1/2	15	1/2	27.4	31.4
15 x 3/4	15	3/4	33.5	29.5
22 x 3/4	22	3/4	32.0	36.5
28 x 1	28	1	44.0	41.0

N.B. Conex capnuts greater than 28mm will have octagonal external form.
For other dimensional data, please contact our Technical Department.