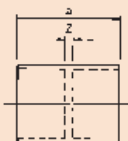


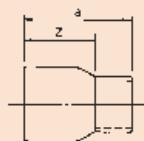
Installation Dimensions

DC601
STRAIGHT COUPLING
Copper x Copper



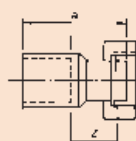
Size	a (mm)	Z (mm)
6	16	2
8	17	2
10	17	2
12	19	2
15	23	2
22	33	2
28	39	2
35	48	2
42	56	2
54	68	2

DC601-2
FITTING REDUCER
Male Copper x Copper



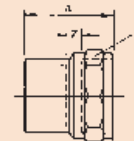
Size	a (mm)	Z (mm)
8 x 6	17	11
10 x 6	17.5	11.5
10 x 8	16.5	9.5
12 x 8	21	14
15 x 8	25	18
15 x 10	25	17
15 x 12	24	15
22 x 15	33	22
28 x 15	40	29
28 x 22	40	24
35 x 15	50	39
35 x 22	52	36
35 x 28	49	30
42 x 15	64	51
42 x 22	60	44
42 x 28	58	39
42 x 35	59	36
54 x 15	66	55
54 x 22	67	51
54 x 28	70	51
54 x 35	72	49
54 x 42	73	46

DC601-TC
STRAIGHT TAP CONNECTOR
Copper x Swivel Female Thread



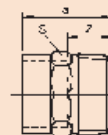
Size	a (mm)	Z (mm)
15 x 1/2	28	12
15 x 3/4	35	24
22 x 3/4	40	24

DC603
FEMALE STRAIGHT CONNECTOR
Copper x Female Thread (Parallel)



Size	a (mm)	S (mm)	Z (mm)
15 x 1/2	32	25	9
15 x 3/4	35	30	7
22 x 1/2	30	25	3
22 x 3/4	36	31	6
28 x 1	43	38	8

DC604
MALE STRAIGHT CONNECTOR
Copper x Male Thread (Taper)



Size	a (mm)	S (mm)	Z (mm)
15 x 1/2	28	22	17
15 x 3/4	42	28	31
22 x 1/2	29	25	13
22 x 3/4	36	28	20
28 x 1	40	34	21

DC606
OBTUSE ELBOW 45°
Copper x Copper



Size	a (mm)	Z (mm)
15	17	6
22	25	9
28	29	10
35	37	14
42	42	15
54	52	20