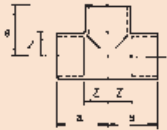
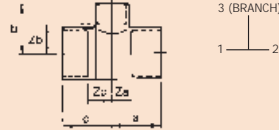


**DC611  
TEE-EQUAL  
Copper All Ends**



Size	a	Z
	(mm)	(mm)
6	11	5
8	12	5
10	15	7
12	16	7
15	19	8
22	28	12
28	34	15
35	44	21
42	52	24
54	62	30

**DC611-RB  
TEE-REDUCED BRANCH  
Copper All Ends**



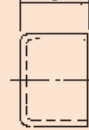
Size	a	b	c	Za	Zb	Zc
	(mm)	(mm)	(mm)	(mm)	(mm)	(mm)
15 x 15 x 8	19	18	19	8	9	8
15 x 15 x 10	19	18	19	8	9	8
15 x 15 x 12	18	18	18	7	9	7
22 x 22 x 10	24	22	24	7	13	7
22 x 22 x 12	23	21	23	7	12	7
22 x 22 x 15	28	28	25	12	12	14
28 x 28 x 15	36	34	34	17	15	23
28 x 28 x 22	35	35	35	16	16	19
35 x 35 x 15	36	31	31	13	20	13
35 x 35 x 22	37	37	37	13	21	13
35 x 35 x 28	40	41	40	17	22	17
42 x 42 x 15	37	33	37	10	22	10
42 x 42 x 22	43	45	43	16	29	16
42 x 42 x 28	48	49	48	20	30	20
42 x 42 x 35	48	49	48	21	26	21
54 x 54 x 15	49	44	49	17	33	17
54 x 54 x 22	50	48	50	18	32	18
54 x 54 x 28	52	51	52	20	32	20
54 x 54 x 35	53	53	53	21	30	21
54 x 54 x 42	63	62	63	31	35	31

**DC611-RE  
TEE-REDUCED END  
Copper All Ends**



Size	a	b	c	Za	Zb	Zc
	(mm)	(mm)	(mm)	(mm)	(mm)	(mm)
22 x 15 x 22	28	28	25	12	12	14
28 x 15 x 28	36	34	34	17	15	23
28 x 22 x 28	35	35	35	16	16	19
35 x 28 x 35	45	43	47	22	19	28
42 x 28 x 42	55	55	55	27	27	36

**DC617  
STOP END  
Copper**



Size	a
	(mm)
8	Upon request
10	8
12	9
15	11
22	16
28	19
35	25
42	33
54	39