

Bronze Gate Valve

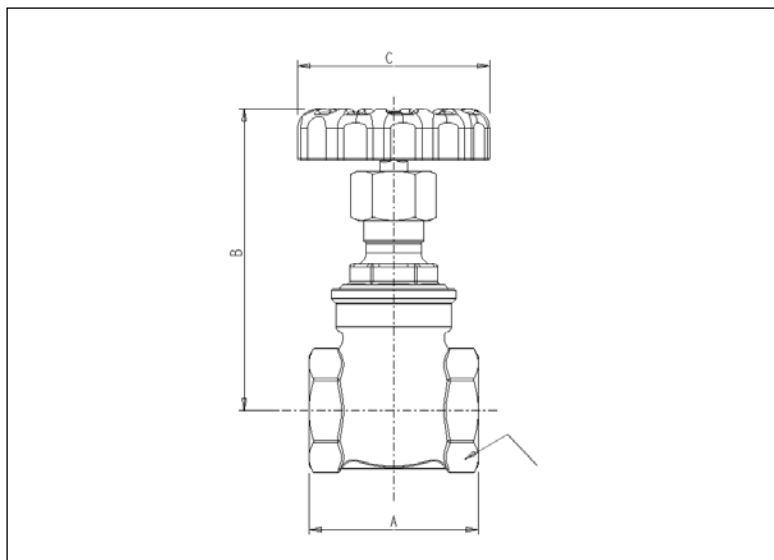
Crane gate valves offer the ultimate in dependable service wherever minimum pressure drop is important. The D151 carries the British Standards Institution kitemark - your assurance of exacting quality standards. In addition the D151 is WRAS approved.

Materials

Part	Material	Sizes
Body	Bronze BSEN1982 CC491K	All
Bonnet	Bronze BSEN1982 CC491K	All
Stem	DZR Brass BSEN12164 CW602N	1/4 - 3
Stem	Manganese Bronze	4
Disc	Bronze BSEN1982 CC491K	All
Stem Retainer	DZR Brass BSEN12164 CW602N	1/2 - 2
Stuffing Box	DZR Brass BSEN12164 CW602N	1/4, 3/8, 2.1/2 & 3
Stuffing Box	Bronze BSEN1982 CC491K	4
Packing	Asbestos Free	All
Packing Gland	Brass BSEN12164 CW614N	1/4, 3/8, 1 - 3
Packing Gland Nut	Brass BSEN12164 CW614N	1/2 & 3/4
Packing Gland	Bronze BSEN1982 CC491K	4
Packing Nut	Brass BSEN12164 CW614N	1/4 - 3
Packing Nut	Bronze BSEN1982 CC491K	4
Handwheel	Aluminium	1/4 - 3
Handwheel	Malleable Iron BSEN1562 GJMB-300-6	4
ID. Plate	Aluminium	All
Handwheel Nut	Brass BSEN12164 CW614N	All
Gaske		



Dimensional Drawing



Dimensions and Weights

Size	Weight (kg)	A (mm)	B (mm)	C (mm)
1/4"	0.27	46	75	45
3/8"	0.26	46	75	45
1/2"	0.269	50	73	52.5
3/4"	0.384	54	84	60
1"	0.593	62	104	65
1.1/4"	0.844	71	113	70
1.1/2"	1.266	77.5	130	78
2"	1.881	87.5	153	92
2.1/2"	4.37	96	219	103
3"	6.4	105	259	121
4"	19.7	162	366	203

Pressure Rating: PN20

UK End Connection: BSEN10226 formerly BS21 Taper

US End Connection: ANSI B1.20.1

Operator: Handwheel.

Gate valves are best for services that require infrequent valve operation, and where the disk is kept either fully opened or fully closed. They are not practical for throttling.

Specification:

Solid wedge disk, non-rising stem, screwed in bonnet.

Valves are manufactured in accordance with BSEN12288 PN20 series B and are BSI Kitemark approved.

Valves having ANSI threads generally conform to MSS SP-80.

This valve is not suitable for use on group 1 gasses or unstable fluids, as defined by the Pressure Equipment Directive 97/23/EC.

Temperature operating range: -10 to 180°C.

Available Options:

P150 locking device.