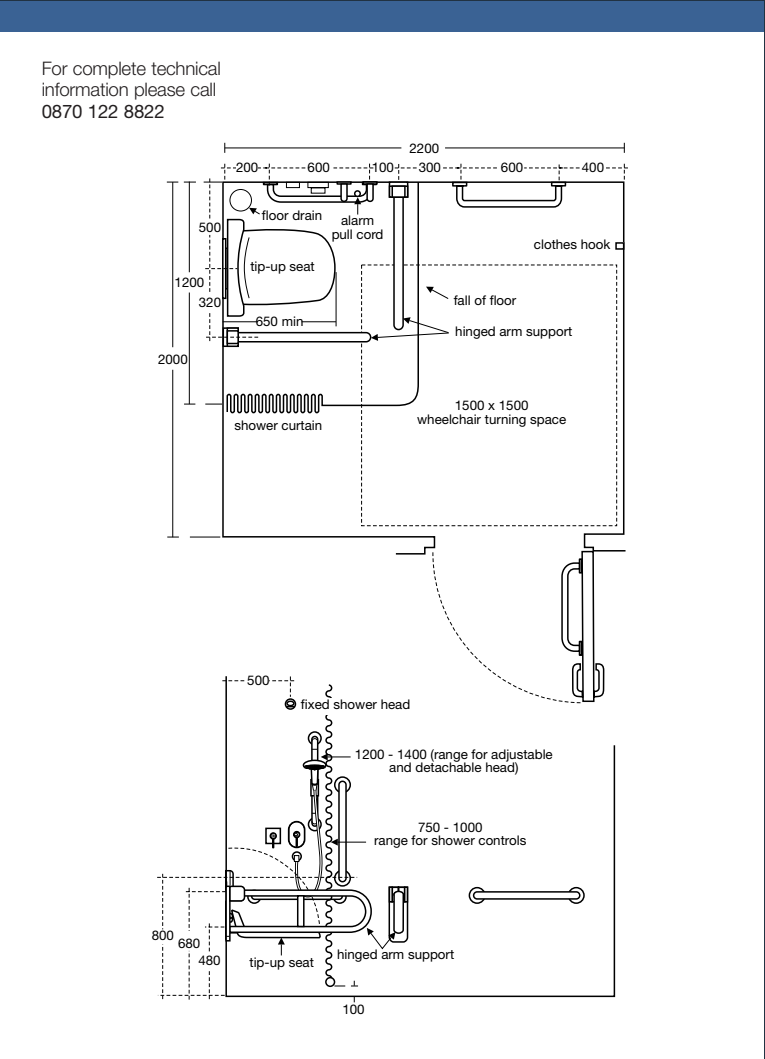


contour 21 doc m shower pack

A wheelchair accessible shower facility that has the flexibility and functionality to meet the needs of a wide range of users; fixed shower head, moveable shower head; grab rails and a seat, all combine in one practical facility.

Contour 21 Doc M shower pack - product codes	
■ S6960AC	White with white rails.
■ S6960LI	White with blue rails.
■ S6960MY	White with stainless steel rails.



- Accessible shower and changing area for wheelchair and care assisted use.
- Easily adjusted diverter for fixed or moveable shower head.
- Friction hand set for easy up and down movement on rail.
- Lever operated thermostatic valve to deliver safe, stable hot water at a set temperature.
- Hinged seat and back support.
- Concealed fixing grab rails tested to 200kg.
- Hinged support arm tested to 200kg.
- Available with white, blue or stainless steel rails.
- OPTION
Also available with corner WC and basin, see Blue Book for further details.

